

Bench Scale Cart Assembly Guide

Inspection

Your bench scale cart will be packaged as shown in Figure 1. When you unpack your bench scale cart you should see the parts shown in Figure 2. Inspect the parts and let your Weigh-Tronix distributor know immediately of any damaged or missing parts.



Figure 1
Packaged parts

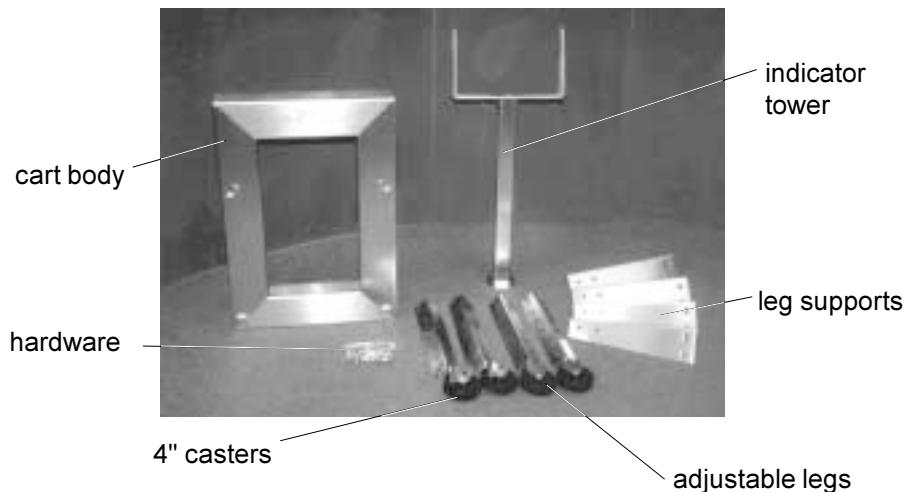


Figure 2
Cart parts

You should have the following:

- 4 adjustable height castered legs
- four leg supports
- one cart body
- one bag of hardware containing two sizes of bolts and lock washers, one size of nuts, and two rubber washers.
- an indicator tower may be packaged with this material or may be shipped in a separate box

Assembly

1. Attach one adjustable leg to one of the leg supports with three of the large bolts, lock washers and nuts. Place the adjustable leg inside the leg support as shown in Figure 3. This keeps corners and edges that can snag out of sight.



Figure 3
Adjustable leg attached
to leg supports



Figure 4
Leg support attached
to cart body

2. Repeat step one for all the adjustable legs and leg supports.
3. Place the body of the cart upside down. Using four 3/8" bolts, lock washers, and nuts, attach a leg assembly to a corner of the cart body. Place the leg assembly inside the corner of the cart to hide the corners of the leg assembly as shown in Figure 4. Also be sure to place the locking caster legs on the end of the cart away from the tower attachment. These two casters swivel and must be on the same end of the cart.
4. Finish placing all the leg assemblies in the proper positions and tighten all the nuts and bolts.
5. On the two legs with non-swiveling casters there is a 1/2" locknut between the leg and caster. See Figure 5. Loosen this nut and point the wheel parallel to the cart's long axis, then tighten the locknut.

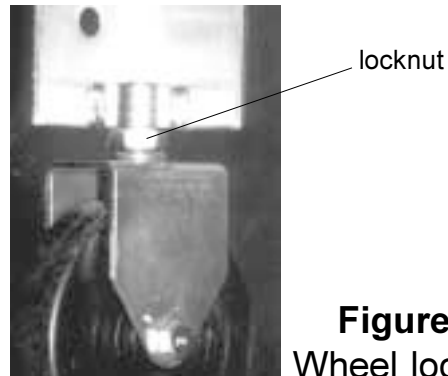


Figure 5
Wheel locknut

6. Place the tower (with the top tilted toward the front of the cart) over the tower mounting holes (Figure 6) and using the $\frac{1}{4}$ " bolts and lock washers, attach the tower to the cart body. Tighten the bolts. See Figure 7.

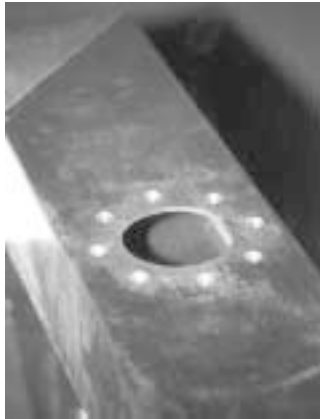


Figure 6
Tower support holes



Figure 7
Tower attachment

7. Your bench scale cart is now ready for installation of the bench scale and indicator. Place a supplied rubber washer between each side of the indicator and the tower. Power cords and weight sensor cords can be run through the hollow tower.

How the cart will look when complete.



Bench Scale Cart Parts List		
Quantity	Description	Part Number
1	Cart Body 14"x14"	21419-0019
1	Cart Body 18"x18"	21419-0027
1	Cart Body 18"x24"	21419-0050
1	Cart Body 20"x20"	21419-0035
1	Cart Body 24"x24"	21419-0043
1	Indicator Tower WI-110/120 sst	19615-0015
1	Indicator Tower WI-125sst, m3275, QC3265	49701-0025
1	Indicator Tower WI-125 Lexan case	19615-0023
1	Indicator Tower WI-127	46735-0062
1	Indicator Tower WI-130	19615-0049
1	Indicator Tower WI-150, WI-152	19615-0031
4	Leg Supports	21418-0018
4	Adjustable Legs	19598-0016
4	Jam nuts, ½" Hex HD sst UNC	14497-0241
2	4" Castors, Rigid ½" threaded stem	17812-0028
2	4" Castors, Swivel ½" threaded stem with lock	17812-0010
28	Nuts, 3/8" UNC sst	14471-0225
28	Washers, Lock 3/8" sst	14474-0214
28	Bolts, 3/8" x ¾" –16 Hex HD sst	14527-0294
4	Washers, ¼" lock sst	14474-0198
4	Bolts, ¼" x ¾" –20 Hex HD sst	14527-0039
2	Rubber Washers for Indicator mounting	19563-0025

Weigh-Tronix

1000 Armstrong Dr.
Fairmont, MN 56031 USA
Telephone: 507-238-4461
Facsimile: 507-238-4195
e-mail: industrial@weigh-tronix.com
www.wtxweb.com

Weigh-Tronix Canada, ULC

217 Brunswick Blvd.
Pointe Claire, QC H9R 4R7 Canada
Telephone: 514-695-0380
Facsimile: 514-695-6820

WEIGH-TRONIX

Weighing Products & Systems