

Orthotropic Concrete Weighbridge

Quality, Dependability, and Value



High Accuracy

POWERCELL® GDD load cells use digital signal processing to provide highly accurate vehicle weighing. Each load cell is equipped with a digital-compensation system that maintains accuracy despite changing environmental conditions. Built-in diagnostics simplify troubleshooting.



Orthotropic Design

Model VTC100 easily handles the forces generated by normal truck traffic, distributing concentrated loads more effectively than standard I-beam deck structures. The robust orthotropic design is similar to those used on the Golden Gate Bridge and many other heavily travelled highway bridges around the world.



Proven Performance

Using the "Module Masher" accelerated-life-cycle test stand, actual scale modules are tested for 1 million cycles with a minimum 60,000-lb dual-tandem-axle live load tire pattern. This is one way we go beyond the competition to ensure that you get the most reliable scale in the industry.



Lightning Protection

The specially designed StrikeShield™ protection system helps prevent costly downtime with multiple levels of protection to safeguard your entire scale system: from the load cells to the terminal. In the unlikely event of a failure due to lightning these components are fully covered for Parts, Labor, Travel and Mileage for 5 years. It is the only system that has been tested by third-party laboratories to withstand multiple strikes.



VTC100 Truck Scale

Model VTC100 is a concrete-deck truck scale that delivers proven performance at an affordable price. It combines a concrete driving surface with a robust orthotropic understructure. The composite design draws upon the strengths of both concrete and steel to produce an exceptionally durable structure. It eliminates a common cause of premature deck failure: voids in the deck that occur when pouring concrete around I-beam flanges and sharp corners. As a result, you get a weighbridge capable of handling legal over-the-road traffic throughout a long service life.

THIS RUGGED AND HIGHLY RELIABLE TRUCK SCALE IS BACKED BY THE INDUSTRY'S FINEST SERVICE NETWORK AND MOST POWERFUL

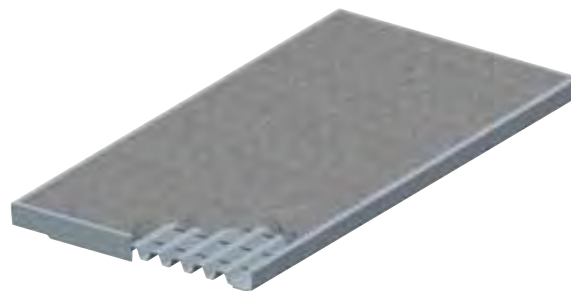
5 YEAR WARRANTY

METTLER TOLEDO

VTC100 Truck Scale**Modular Concrete Deck Weighbridge**

Specifications	
Concrete Thickness	10 in (254 mm)
Scale Widths	9 ft-10 in, 11 ft, 12 ft (3, 3.3, 3.7 m)
Scale Lengths	10 to 140 ft (3 to 42.7 m)
Profile	20 in (508 mm)
Module Lengths	10 ft, 15 ft, 17 ft-6 in, 20 ft, 23 ft-4 in (3, 4.6, 5.3, 6.1, 7.1 m)
Steel Type	ASTM A-36
Capacity*	120,000 lb (scale lengths ≤ 23 ft-4 in) 200,000 lb (scale lengths > 23 ft-4 in)
Foundation Types	Variable Footer, Beam Slab, or Deep Pit
eMin	20 lb (10 kg)
nMax	10,000 divisions
Concentrated Load Capacity	80,000 lb (36,287 kg)
NTEP Certificate	10-029

*Note: 200,000 lb is the maximum gross capacity that any truck scale can have and still maintain 20-lb increments in legal-for-trade applications.



Each scale module is ready to fill with concrete when it arrives at the site. This reduces installation time and the expense of installing rebar or performing other deck preparation on site.

Applications

For weighing over-the-road vehicles in a wide variety of above-ground and deep-pit applications, including:

- Solid Waste
- Ports
- Forest Products
- Bulk Foods
- Agriculture
- Aggregates
- Scrap Metals
- Utilities
- Chemicals
- Dairy

Features	Benefits
Orthotropic Structure	Exceptionally strong weighbridge meets highest performance requirements.
International Intergard® Finish	Protects steel against corrosion even in the harshest environments.
30t POWERCELL® GDD Load Cells	Digital technology provides accurate vehicle weighing.
Concrete Deck	Provides good traction when wet and improved resistance to certain corrosives.

Options:

- High-Clearance Risers
- Manholes
- Side Rails
- Dolly Landing Pads/Deck Runners
- Blowdown Plates
- DataBridge™ Vehicle Scale Software
- Unattended Driver Terminals
- Remote Displays



Side Rails



Risers

Software



Remote Displays



Produced in a
facility that is

**Mettler-Toledo, LLC**

1900 Polaris Parkway
Columbus, Ohio 43240
Tel. (800) 786-0038
(614) 438-4511
Fax (614) 438-4900

Subject to technical changes.
© 2015 Mettler-Toledo, LLC
09/2015
TR03513.1E

www.mt.com/vehicle

For more information