

# **G795**

## **5 lb. Scale**

### **Operating Guide**



 **Pitney Bowes**

**FCC Compliance**

This equipment has been tested and found to comply with the limits for a class B digital device, pursuant to Part 15 of the FCC Rules. These limits are designed to provide reasonable protection against harmful interference in a residential installation. This equipment generates, uses and can radiate radio frequency energy and, if not installed and used in accordance with the instructions, may cause harmful interference to radio communications. However, there is no guarantee that interference will not occur in a particular installation. If this equipment causes harmful interference to radio or television reception, which can be determined by turning the equipment off and on, the user is encouraged to try to correct the interference by one or more of the following measures:

- Reorient or relocate the receiving antenna.
- Increase the separation between the equipment and receiver.
- Connect the equipment to an outlet on a circuit different from that to which the receiver is connected.
- Consult the dealer or an experienced radio/TV technician for help.

Second Edition December 2000

(Previously published as model G790, SV60410 Rev. C)

All rights reserved. This book may not be reproduced in whole or in part in any fashion or stored in a retrieval system of any type or transmitted by any means, electronically or mechanically, without the express, written permission of Pitney Bowes.

We have made every reasonable effort to ensure the accuracy and usefulness of this manual; however, we cannot assume responsibility for errors or omissions or liability for the misuse or misapplication of our products.

Due to our continuing program of product improvement, equipment and material specifications as well as performance, features are subject to change without notice.

SV60575 Rev. B 12/00

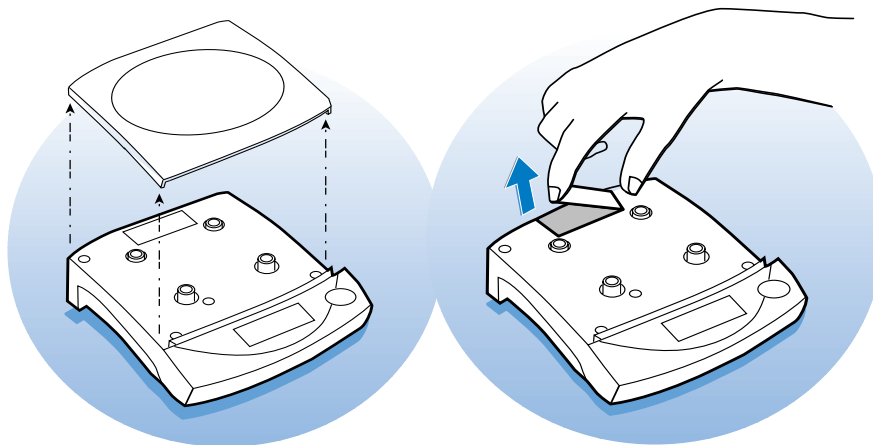
## ***Safety Notes***



- ☐ Follow the normal safety precautions for all office equipment when using this scale.
- ☐ Use only the AC adapter power supply intended for this scale.
- ☐ To protect against electric shock, plug the AC adapter into a properly grounded wall outlet only.
- ☐ Use an easily accessible wall outlet near the scale.
- ☐ Do not route the AC adapter cable over sharp edges or trap it between furniture.
- ☐ Do not remove covers. If the scale has been dropped or has otherwise had the enclosure stressed in any way, call Pitney Bowes.
- ☐ Do not place lighted candles, cigarettes, cigars, etc. on the scale.
- ☐ Read all instructions before operating the scale.
- ☐ Use the equipment only for its intended purpose.

## Installing the Battery for the First Time

---



1. Remove the platter.
2. Remove the battery cover.
3. Install the 9-volt alkaline battery included with your scale.
4. Reinstall the battery cover and platter.

*Note: Replace battery when **LO** appears on the scale display. If you wish, you may purchase an optional AC power supply, Order No. 693-0, by calling Pitney Bowes at 1-800-468-8454.*

## Locating the Rate Chart

1. Pull the rate chart into view from under the scale.



## Calculating Postage

1. Press the **On/Zero** key. The scale displays **00.0**.
2. Place a mailpiece on the scale. An indicator (▶) appears in the bottom right-hand corner of the display when the weight is stable.



3. Pull the rate chart into view from under the scale. On the chart, find the weight of your mailpiece. If your weight is between two weight limits on the chart, use the postage for the higher weight.

For example, if your item weighs 2.1 oz., apply postage for 3.0 oz.

*Note: The scale turns itself off automatically after a few minutes of inactivity.*

This device complies with Part 15 of the FCC Rules. Operation is subject to the following two conditions: (1) this device may not cause harmful interference, and (2) this device must accept any interference received, including interference that may cause undesired operation.

**Pitney Bowes**  
Reorder part number PN00000000  
To reorder visit our supply line at [www.pitneybowes.com](http://www.pitneybowes.com)

| Weight | 1st Class Single Piece | 1st Class Priority | Expedited Priority Mail® | Media Mail® | Post Cards |
|--------|------------------------|--------------------|--------------------------|-------------|------------|
| 5 lbs  | 7.60                   | 7.60               | 24.50                    | 3.10        |            |
| 4 lbs  | 6.35                   | 6.35               | 21.70                    | 2.58        |            |
| 3 lbs  | 5.10                   | 5.10               | 18.85                    | 2.11        |            |
| 2 lbs  | 3.85                   | 3.85               |                          | 1.68        |            |
| 1 lb   | 3.45                   |                    |                          |             |            |
| 13 oz  | 3.10                   |                    |                          |             |            |
| 12 oz  | 2.97                   |                    |                          |             |            |
| 11 oz  | 2.84                   |                    | 16.05                    |             |            |
| 10 oz  | 2.41                   |                    |                          |             |            |
| 9 oz   | 2.18                   |                    |                          |             |            |
| 8 oz   | 1.95                   | 3.45               |                          | 1.21        |            |
| 7 oz   | 1.72                   |                    |                          |             |            |
| 6 oz   | 1.49                   |                    |                          |             |            |
| 5 oz   | 1.26                   |                    | 12.30                    |             |            |
| 4 oz   | 1.03                   |                    |                          |             |            |
| 3 oz   | .80                    |                    |                          |             |            |
| 2 oz   | .57                    |                    |                          |             |            |
| 1 oz   | .34                    |                    |                          |             | 5.21       |

Effective January 1, XXXX

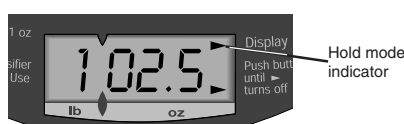
Rate Chart

## Retaining the Weight Reading

Sometimes it's necessary to remove a large envelope from the scale to see the weight reading. To briefly retain the weight reading after removing an item, you may place the scale in *hold* mode before weighing an item.

### To use hold mode:

1. Press and hold the On/Zero key for three seconds. An indicator (►) appears in the upper right-hand corner of the display verifying the scale is in hold mode.
2. Place an envelope on the scale and wait two seconds for the scale to capture the weight.



### To clear the display:

Press **On/Zero** once.

### To cancel hold mode:

Press and hold **On/Zero** for three seconds.

*Note: Each time the scale enters sleep mode, the hold mode clears.*

## ***Clearing Overweight and Underweight Conditions***

- Weighing any item of more than five pounds causes the scale to display **E** (error), indicating the weight of the item exceeds the scale's weighing capacity. Remove the overweight item and continue with the next mailpiece.
- If a negative weight displays at any time, remove all items from the scale and press the **On/Zero** key to reset the scale.

*Note: Pressing the On/Zero key with weight on the scale causes the scale to set to zero and display a negative weight when you remove the item. Press the On/Zero key again to reset.*

## ***Customer Service***

If the scale does not operate properly, call Pitney Bowes for service at  
**1-800-468-8454.**



Printed on recycled paper.



**Pitney Bowes**



\*SV60575REV.B\*

One Elmcroft Road Stamford, Connecticut 06926-0700

---

SV60575 Rev. B 12/00 ©2000 Pitney Bowes All Rights Reserved Printed in USA