
MSI-7200/7200 RF Dyna-Link

Tension Dynamometers

Confidential Replacement Parts Price List
Measurement Systems International
Authorized Distributor Use Only

Effective 5/06

Table of Contents

Replacement Parts Price List - Effective 5/06

Measurement Systems International

Page

Discount, Terms, Conditions and Warranty	3
MSI Exchange Parts for MSI-7200 / MSI-7200 RF	4
MSI-7200 Dyna-Link Standard Assembly	5
MSI-7200 Dyna-Link Remote 1 Assembly	7
MSI-7200 Dyna-Link Remote 1 Enclosure Assembly	9
MSI-7200 Dyna-Link Remote 2 Assembly	11
MSI-7200 Dyna-Link Remote 2 Enclosure Assembly	13
MSI-7200 RFL Dyna-Link	15
MSI-7200 RFH Dyna-Link RF Remote Control	17
Shackle Dimensions	19

Discount, Terms, Conditions and Warranty

Replacement Parts/Price List - Effective 5/06

Measurement Systems International

Distributor Discount

The standard distributor discount for MSI replacement parts is 25% and applies to all published prices effective May 2006. All orders are subject to final acceptance by MSI. Orders will be accepted from authorized MSI distributors only. A \$35 USD minimum per purchase order applies for all orders placed by authorized distributors with MSI. Prices listed are F.O.B. factory.

Terms and Conditions (Domestic Sales)

Each authorized distributor/dealer shall have submitted an original credit application signed and dated with an authorized officer/owner signature prior to receiving credit privileges with MSI. Credit applications will remain on file and periodically be updated.

New credit applications will be evaluated by the Credit Department and credit limits established based on the applicants credit history.

MSI's standard credit terms are Net 30 Days. A 1.5% interest penalty is applied on any outstanding balance over 60 days late. Accounts 30 days past due are automatically subject to prepayment or C.O.D. terms. Any work in process is put on credit hold until payment and any applicable penalty charges are received. Accounts 60 days past due will result in permanent prepayment or C.O.D. terms.

Domestic Shipments: Unless otherwise specified by dealer/distributor, all domestic shipments up to 150 pounds will be shipped prepaid via UPS and applicable charges will be added to the order invoice. MSI may prepay and add freight charges from other carriers when specified by dealer/distributor. Otherwise, shipments using carriers other than UPS may be shipped *freight collect*.

Returned equipment: Permission must be obtained from MSI before any equipment is returned and shipment must bear the Return Material Authorization (RMA) Number for identification. New equipment returned for credit should be received in resalable condition and is subject to a 15% service charge. MSI reserves the right to deduct for any sustained damage in transit. No deduction for returned equipment is accountable from a remittance until a credit memorandum has been issued by MSI.

Unless otherwise authorized by MSI, all returned equipment will only be accepted when freight has been prepaid.

Order cancellation: MSI will cancel orders for standard equipment at no service charge prior to shipment. A service charge of 15% plus transportation charges will be assessed to orders cancelled after shipment. A service charge for cancellation of custom equipment will be determined on an individual basis.

Exceptions to the above MSI credit policy require written authorization from a Corporate Director and/or Credit Department.

Terms and Conditions (Export Sales)

Export payment terms are by irrevocable Letter of Credit, credit card, prepayment, or documentary collection depending upon the customer and the residing country. All payments are required in U.S. Dollars.

Export accounts that wish to seek credit terms must submit at least three credit references (preferably in U.S.A.) and a banking reference. Credit issuance will be determined by existing credit standing, level of business with MSI along with the political and economic conditions of the importing country.

Credit Card Payments

Payment with Visa/MasterCard is also accepted.



Letter of Credit (L/C)

Orders must be covered by an irrevocable commercial Letter of Credit issued by a major bank, payable at sight, incorporating the following terms and conditions:

Issued in favor of : Measurement Systems International, Inc.
14240 Interurban Avenue South STE 200
Seattle, Washington 98168-4661 U.S.A.

In an amount not to exceed (amount of L/C) U.S. Dollars, Ex-Works: Factory, Seattle, Washington.

Advised through: Bank of America
International Trade Operations
800 Fifth Avenue, Floor 31
Seattle, Washington, 98104 USA
SWIFT: BOFAUS3N

Bank of America must be designated as the negotiating bank and must be authorized to reimburse itself for drawings by:

- Debiting the opening bank's account with Bank of America, San Francisco, California.
- Claiming telegraphically on a United States bank.

The L/C is to be payable against the presentation of the following documents:

- Draft drawn on Bank of America "at sight".
- Commercial Invoice.
- Packing List.
- Airway Bill evidencing shipment of the merchandise from Seattle to destination.
- Insurance to be effected by buyer.
- Transshipment and partial shipments allowed. Documents to be presented a minimum of 10 days from Airway Bill date.
- All banking charges other than those of Bank of America are for the buyers account.

The Letter of Credit must be acceptable to MSI before our obligation to the order is considered final.

Export Administrative Fees

Apply with L/C and Documentary Collection terms, minimum charge of \$350 USD.

Freight Forwarder

Orders will be shipped whenever possible by a customer specified freight forwarder. When one is not specified, MSI will attempt to ship by the least expensive freight forwarder. By following the above procedures, orders will be processed faster and at less expense. If any other method of shipping and payment is used, the cost of additional export documentation, insurance, freight, etc. will be added to the net selling prices.

Limited Warranty

Warranty Terms are detailed in each operating manual. In general, there is a one year warranty against factory defects on all MSI equipment. Batteries and cables are warranted for 90 days. Warranty repair is to be conducted at the plant unless specifically authorized in writing by MSI. When authorized warranty repair is conducted by the Distributor, the rates paid by MSI are \$35.00 per hour for labor.

MSI Exchange Parts

Replacement Parts/Price List - Effective 5/06

Measurement Systems International

Summarized below are the components eligible for the MSI Exchange Parts program. MSI will invoice the full price of the exchanged part at the time of sale. When the exchange core is received, upon evaluation and acceptance, the core's value will be credited to the Authorized Distributor's account. The serial number of the equipment / scale and a purchase order are required when exchanged parts are ordered. Prices *do not* include shipping charges.

Evaluation Criteria:

The parts returned to MSI for exchange must be received within 30 days, be identical to those shipped and be repairable. If the returned parts are not identical, not repairable or not returned within 30 days, the Authorized Distributor's account will not be credited for the core's value.

Product	List Price	Exchange Price
MSI-7200 / MSI-7200 RF Dyna Link:		
Display PCB	\$475.00	\$400.00
Remote 1 PCB	\$575.00	\$400.00
Remote 2 PCB	\$500.00	\$400.00
Amplifier PCB	\$200.00	Contact Factory
Trans/Receive PCB set	\$790.00	\$500.00
RF Handheld	\$1095.00	Contact Factory

MSI warrants all exchange parts against defects in workmanship and materials for a period of 90 days from date of purchase. Pending stock status, exchange parts can be ordered and shipped the same day, if ordered prior to 12:00 PM, Pacific Time.

Technical specifications subject to change without notice.
Prices suggested list F.O.B. MSI plant, Seattle, WA are subject to change without notice.

MSI-7200 Dyna-Link Standard Assembly

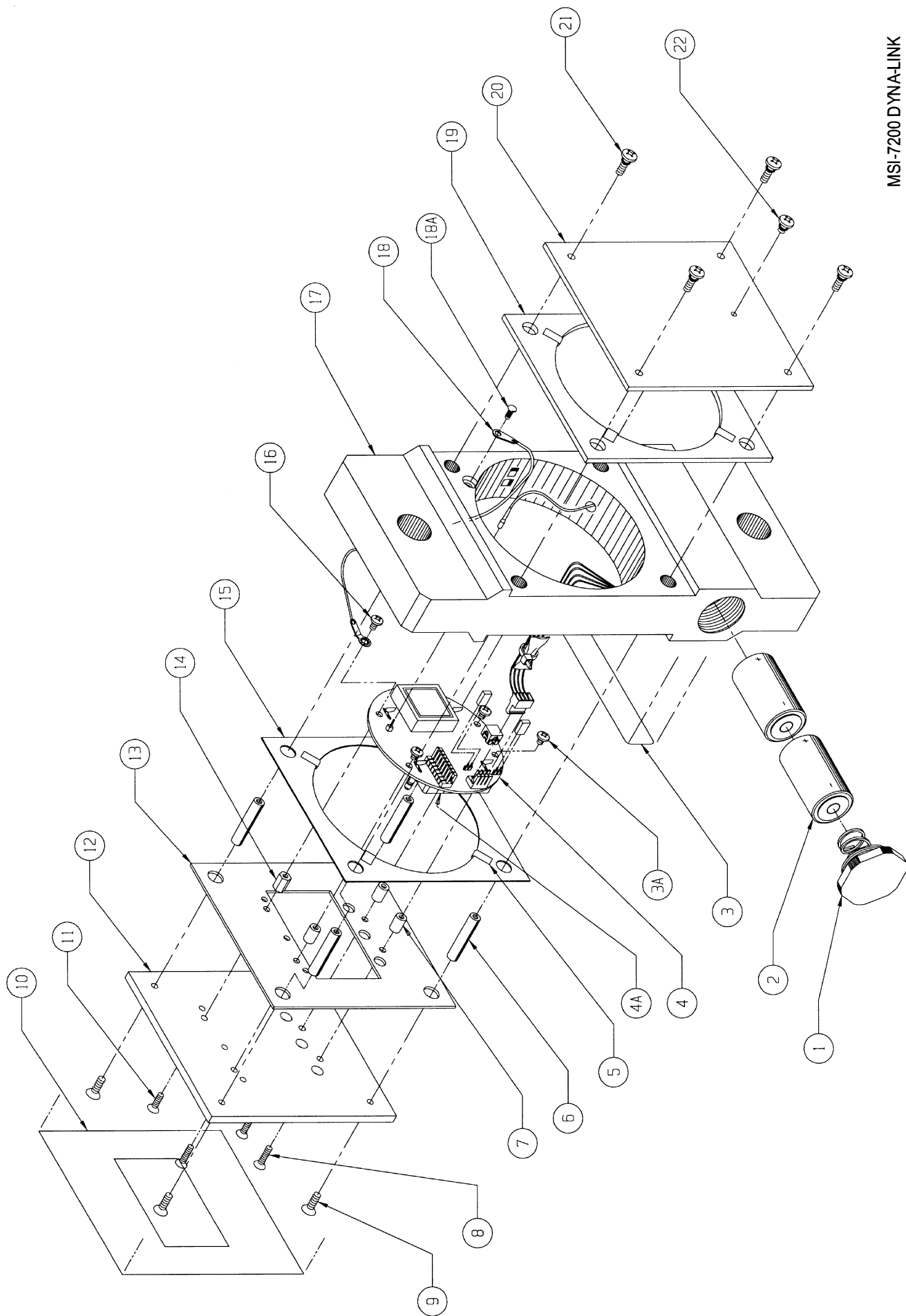
Replacement Parts Price List - Effective 5/06

Measurement Systems International

Item Number	Part Number	Description	List Price
1	500255-0001	Battery cap assembly	30.00
2	10298	Battery, alkaline, C cell	2.50
3	500194-0100	Label, capacity, 1,000 lb /500 kg	15.00
3	500194-0200	Label, capacity, 2,000 lb/1,000 kg	15.00
3	500194-0300	Label, capacity, 5,000 lb/2,500 kg	15.00
3	500194-0400	Label, capacity, 10,000 lb/5,000 kg	15.00
3	500194-0500	Label, capacity, 25,000 lb/12,500 kg	15.00
3	500194-0600	Label, capacity, 50,000 lb/25,000 kg	15.00
3	500194-0700	Label, capacity, 100,000 lb/50,000 kg	15.00
3	500194-0800	Label, capacity, 500 lb/250 kg	15.00
3	500194-0900	Label, capacity, 160,000 lb/80,000 kg	15.00
3	500194-1000	Label, capacity, 220,000 lb/110,000 kg	15.00
3A	10761	Screw, PH, 6-32 x 3/16, Phil, SS	1.00
4	500575-0001	Display assembly	475.00
4A	10271	Switch	4.00
5	10300	Foil, aluminum .004th x .250w	1.00
6	10595	Spacer, 1/4 round, 8-32 x 1.28 (500 lb thru 2K&10K)	7.00
6	10596	Spacer, 1/4 round, 8-32 x 1.58 (5K)	10.00
6	10597	Spacer, 1/4 round, 8-32 x 1.86 (25K)	12.00
6	10598	Spacer, 1/4 round, 8-32 x 2.43 (50K)	13.00
6	10599	Spacer, 1/4 round, 8-32 x 2.78 (100K)	17.00
7	11429	Spacer, # 6, .375, w/locking PCB mounts	1.00
8	10307	Screw, PH, 6-32 x 7/16, Phil, SS	1.00
9	10878	Screw, PH, 8-32 x 3/8, Phil, SS	1.00
10	500193-0100	Label	35.00
11	10306	Screw, PH, 6-32 x 3/8, Phil, SS	1.00
12	500195-0200	Panel	25.00
13	500199-0100	Shield, EMI	3.00
14	10296	Stand off, hex, 6-32 x 3/8, aluminum	1.00
15	500198-0200	Gasket	3.50
16	30028-0225	Screw, PH, 6-32 x 3/16, Phil, SS	.50
17	500560-0001	Load cell assembly, 500 lb	865.00
17	500260-0001	Load cell assembly, 1,000/2,000 lb	865.00
17	500261-0001	Load cell assembly, 5,000 lb	950.00
17	500230-0001	Load cell assembly, 10,000 lb	1125.00
17	500264-0001	Load cell assembly, 25,000 lb	1700.00
17	500347-0001	Load cell assembly, 50,000 lb	1800.00
17	500349-0001	Load cell assembly, 100,000 lb	2775.00
18	500620-0001	Ground strap	10.00
18A	10669	Screw, 6 x 1/4, SS	.50
19	500200-0200	Gasket	3.50
20	500197-0100	Panel	25.00
21	20825-0047	Screw, seal, PH, 8-32 x 1/2, Phil, SS	7.00
22	20825-0041	Screw, seal, PH, 8-32 x 1/8, Phil, SS	3.00

Technical specifications subject to change without notice.

Prices suggested list F.O.B. MSI plant, Seattle, WA are subject to change without notice.



MSI-7200 DYNA-LINK
STANDARD ASSEMBLY
Measurement Systems International
14240 Interurban Avenue South STE200
Seattle, Washington 98168-4661 U.S.A.

MSI-7200 Dyna-Link Remote 1 Assembly

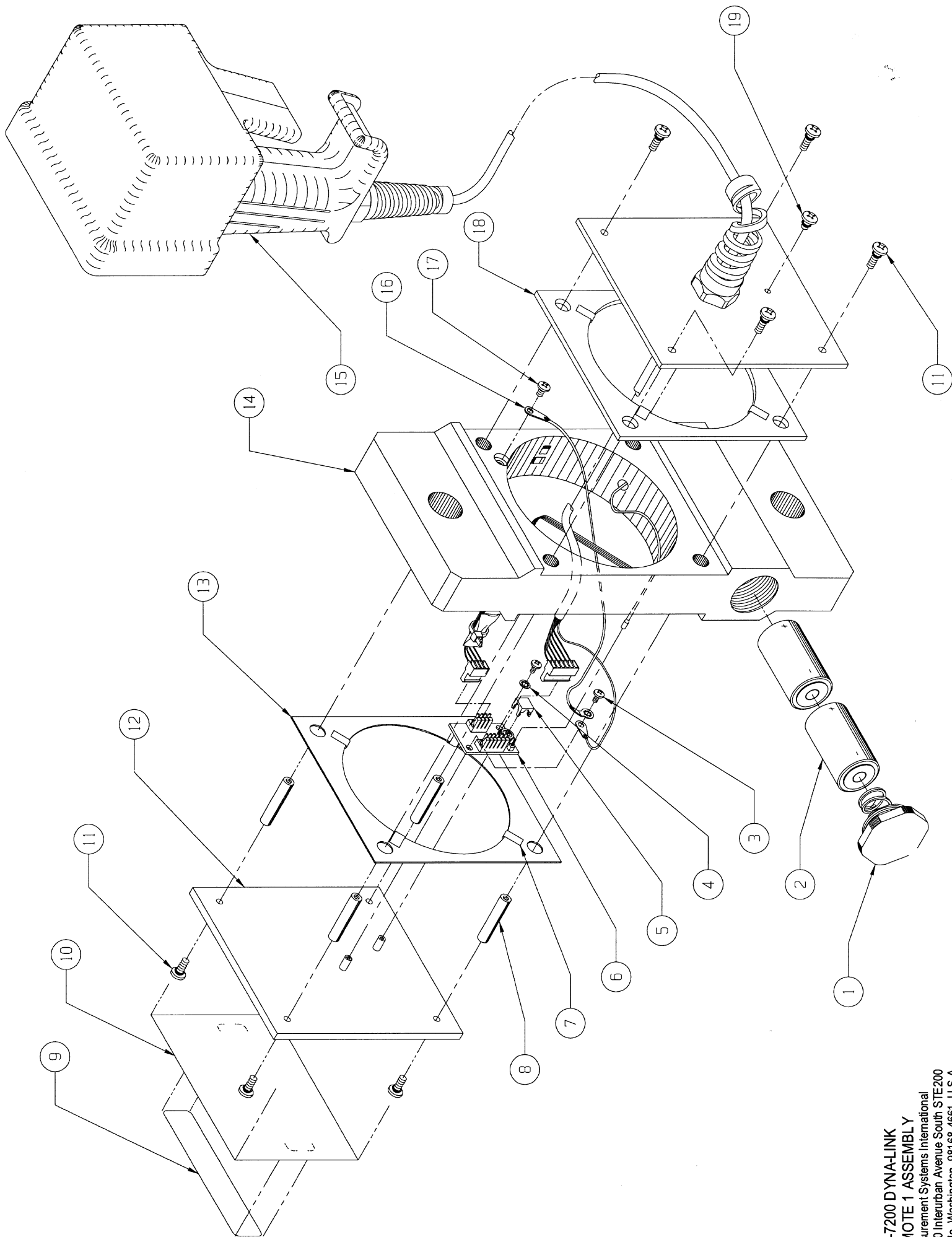
Replacement Parts Price List - Effective 5/06

Measurement Systems International

Item Number	Part Number	Description	List Price
1	500255-0001	Battery cap assembly	30.00
2	10298	Battery, alkaline, C cell	2.50
3	30028-0212	Screw, PH, 4-40 x 1/4, phil, SS	.50
4	20701-0003	Washer, # 4, internal tooth, SS	.50
5	10466	Switch, cap key, micro-cosmos	1.00
6	500571-0001	PCB, amplifier, load cell	200.00
7	10300	Foil, aluminum .004th X .250w	1.00
8	10595	Spacer, 1/4 round, 8-32 x 1.28 (500#-2K, 10K)	7.00
8	10596	Spacer, 1/4 round, 8-32 x 1.58 (5K)	10.00
8	10597	Spacer, 1/4 round, 8-32 x 1.86 (25K)	12.00
8	10598	Spacer, 1/4 round, 8-32 x 2.43 (50K)	13.00
8	10599	Spacer, 1/4 round, 8-32 x 2.78 (100K)	17.00
9	500194-0100	Label, capacity, 1,000 lb/500 kg	15.00
9	500194-0200	Label, capacity, 2,000 lb/1,000 kg	15.00
9	500194-0300	Label, capacity, 5,000 lb/2,500 kg	15.00
9	500194-0400	Label, capacity, 10,000 lb/5,000 kg	15.00
9	500194-0500	Label, capacity, 25,000 lb/12,500 kg	15.00
9	500194-0600	Label, capacity, 50,000 lb/25,000 kg	15.00
9	500194-0700	Label, capacity, 100,000 lb/50,000 kg	15.00
9	500194-0800	Label, capacity, 500 lb/250 kg	15.00
9	500194-0900	Label, capacity, 160,000 lb/80,000 kg	15.00
9	500194-1000	Label, capacity, 220,000 lb/110,000 kg	15.00
10	500268-0100	Label	40.00
11	20825-0047	Screw, seal, PH, 8-32 x 1/2, phil, SS	7.00
12	500196-0100	Panel	40.00
13	500198-0200	Gasket	3.50
14	500560-0001	Load cell assembly, 500 lb	865.00
14	500260-0001	Load cell assembly, 1,000/2,000 lb	865.00
14	500261-0001	Load cell assembly, 5,000 lb	950.00
14	500230-0001	Load cell assembly, 10,000 lb	1125.00
14	500264-0001	Load cell assembly, 25,000 lb	1700.00
14	500347-0001	Load cell assembly, 50,000 lb	1800.00
14	500349-0001	Load cell assembly, 100,000 lb	2775.00
15	500597-0001	Enclosure assembly, remote 1	1000.00
16	500620-0001	Ground strap	10.00
17	30028-0212	Screw, PH, 4-40 x 1/4, Phil, SS	.50
18	500200-0200	Gasket	3.50
19	20825-0041	Screw, seal, PH, 8-32 x 1/8, Phil, SS	3.00

Technical specifications subject to change without notice.

Prices suggested list F.O.B. MSI plant, Seattle, WA are subject to change without notice.



MSI-7200 DYNA-LINK
 REMOTE 1 ASSEMBLY
 Measurement Systems International
 14240 Interurban Avenue South STE200
 Seattle, Washington 98168-4661 U.S.A.

MSI-7200 Dyna-Link Remote 1 Enclosure Assembly

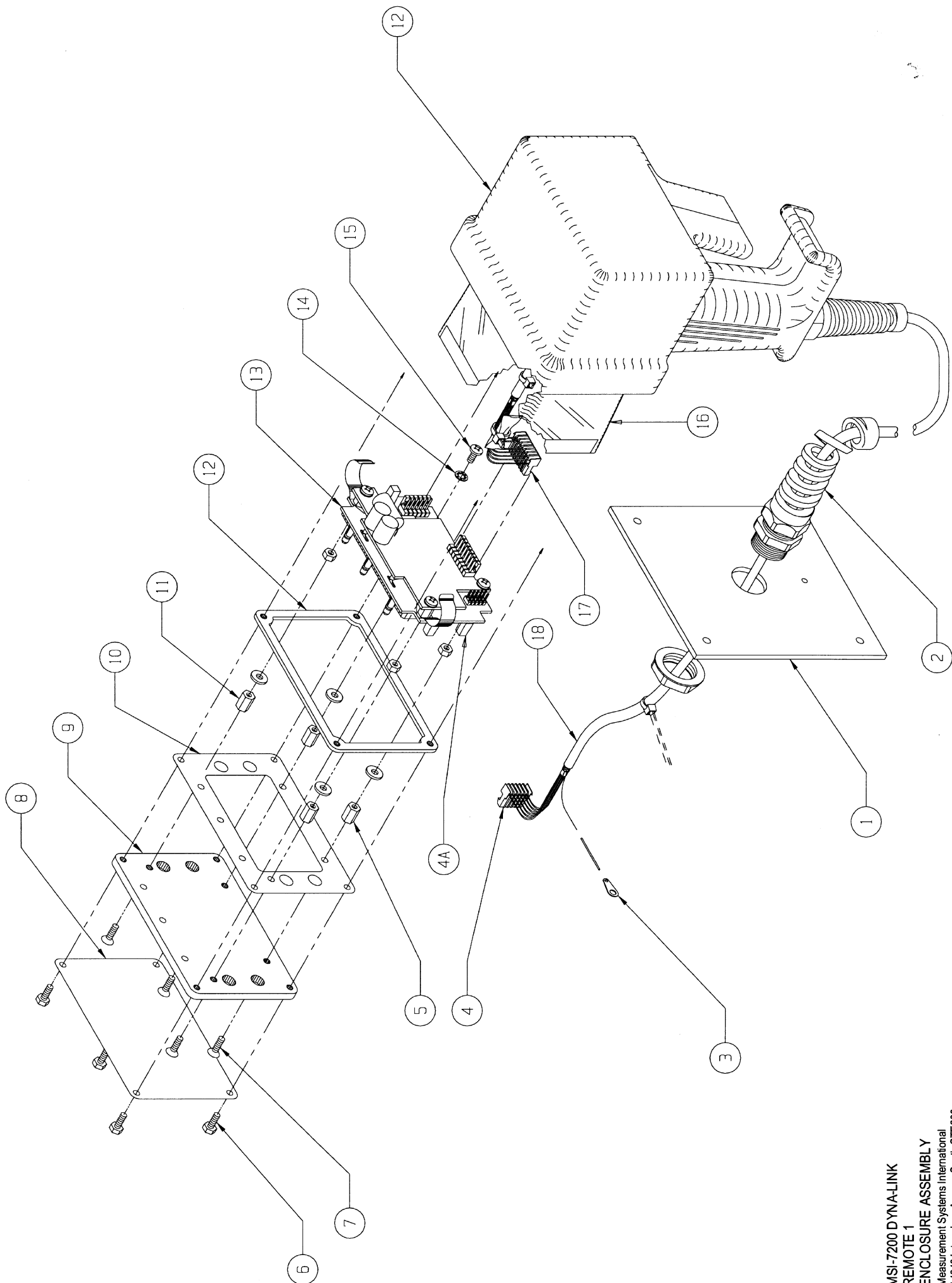
Replacement Parts Price List - Effective 5/06

Measurement Systems International

Item Number	Part Number	Description	List Price
1	500240-0100	Panel	75.00
2	10447	Strain relief, liquid tight, flexible, w/nut	10.00
3	10161	Lug(solder),#6	1.00
4	38610-0622	Connector, #6 , Amp	2.00
4A	10271	Switch	4.00
5	10296	Stand off, hex, 6-32 x 3/8, alum	1.00
6	10353	Screw, HH, M4 x .7 x 10mm, nylon	1.00
7	10306	Screw, PH, 6-32 x 3/8, Phil, SS	1.00
8	500258-0100	Label	58.00
9	500269-0200	Panel	75.00
10	500273-0100	Shield, EMI	3.00
11	10441	Washer, flat, # 6, SS	1.00
12	10305	Enclosure	165.00
13	500595-0001	Display assembly, remote 1	575.00
14	20701-0004	Washer, # 6, internal tooth, SS	.50
15	30028-0226	Screw, PH, 6-32 x 1/4, Phil, SS	.50
16	500336-0100	Shield, EMI	25.00
17	38610-0822	Connector, # 8, Amp	2.00
18	500296-0100	Cable, 22 awg, 3 pair, double shielded 25 ft	50.00

Technical specifications subject to change without notice.

Prices suggested list F.O.B. MSI plant, Seattle, WA are subject to change without notice.



MSI-7200 DYNA-LINK
 REMOTE 1
 ENCLOSURE ASSEMBLY
 Measurement Systems International
 14240 Interurban Avenue South STE200
 Seattle, Washington 98168-4661 U.S.A.

MSI-7200 Dyna-Link Remote 2 Assembly

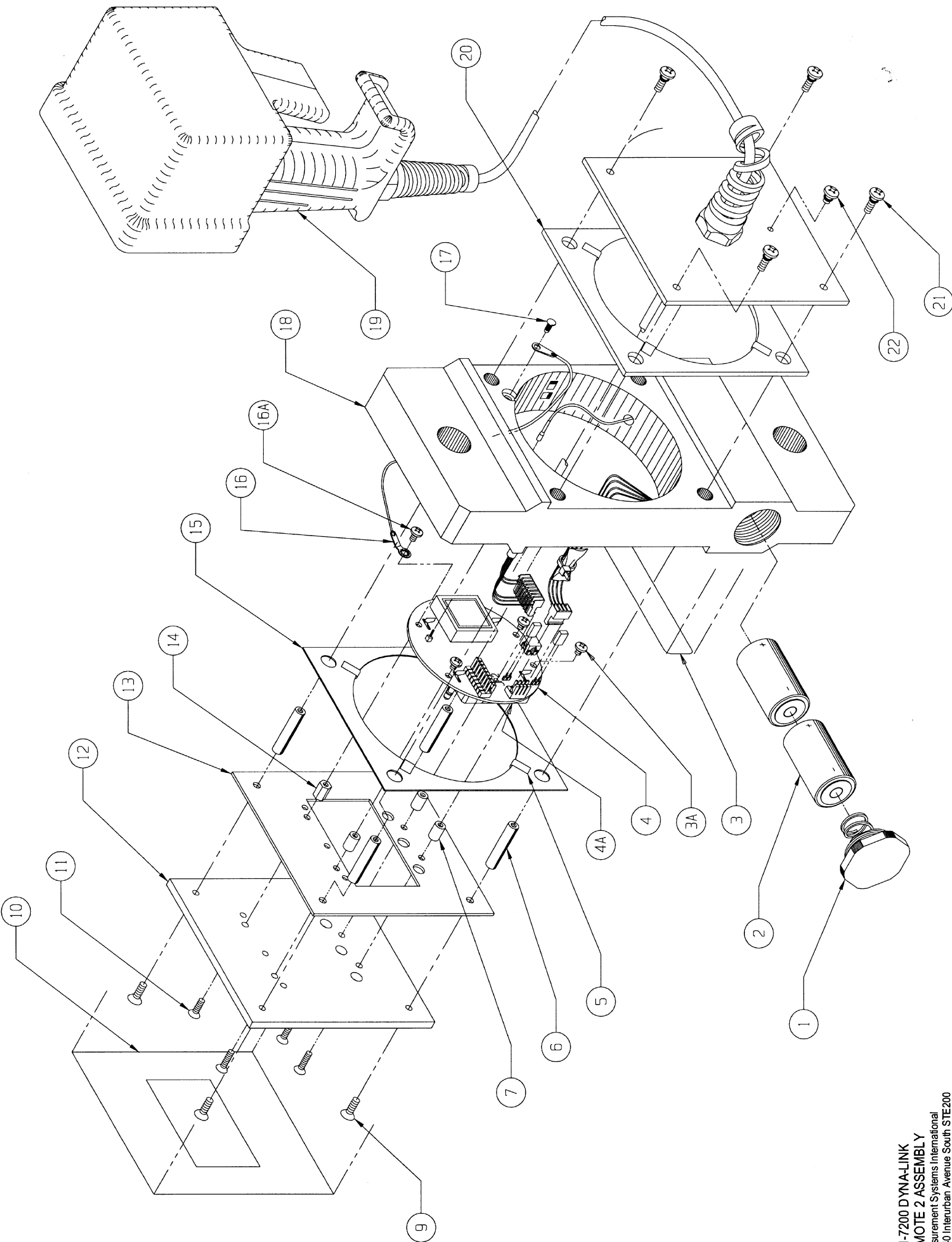
Replacement Parts Price List - Effective 5/06

Measurement Systems International

Item Number	Part Number	Description	List Price
1	500255-0001	Battery cap assembly	30.00
2	10298	Battery, alkaline, C cell	2.50
3	500194-0100	Label, capacity 1,000 lb/500 kg	15.00
3	500194-0200	Label, capacity 2,000 lb/1,000 kg	15.00
3	500194-0300	Label, capacity 5,000 lb/2,500 kg	15.00
3	500194-0400	Label, capacity 10,000 lb/5,000 kg	15.00
3	500194-0500	Label, capacity 25,000 lb/12,500 kg	15.00
3	500194-0600	Label, capacity 50,000 lb/25,000 kg	15.00
3	500194-0700	Label, capacity 100,000 lb/50,000 kg	15.00
3	500194-0800	Label, capacity 500 lb/250 kg	15.00
3	500194-0900	Label, capacity 160,000 lb/80,000 kg	15.00
3	500194-1000	Label, capacity 220,000 lb/110,000 kg	15.00
3A	10761	Screw, PH, 6-32 x 3/16, Phil, SS	1.00
4	500575-0001	Display assembly	475.00
4A	10271	Switch	4.00
5	10300	Foil, aluminum .004th X .250w	1.00
6	10595	Spacer, 1/4 round, 8-32 X1.28 (500#-2K, 10K)	7.00
6	10596	Spacer, 1/4 round, 8-32 X1.58 (5K)	10.00
6	10597	Spacer, 1/4 round, 8-32 X1.86 (25K)	12.00
6	10598	Spacer, 1/4 round, 8-32 X2.43 (50K)	13.00
6	10599	Spacer, 1/4 round, 8-32 X2.78 (100K)	17.00
7	11429	Spacer	1.00
9	10308	Screw, PH, 8-32 x 3/8, Phil, SS	1.00
10	500193-0100	Label	35.00
11	10306	Screw, PH, 6-32 x 3/8, Phil, SS	1.00
12	500195-0200	Panel	25.00
13	500199-0100	Shield, EMI	3.00
14	10296	Stand off, hex, 6-32 x 3/8, alum	1.00
15	500198-0200	Gasket	3.50
16	500620-0001	Ground strap	10.00
16A	30028-0225	Screw, PH, 6-32 x 3/16, Phil, SS	.50
17	10669	Screw, PH, 6-32 x 1/4, Phil, SS	.50
18	500560-0001	Label, capacity 500 lb	865.00
18	500260-0001	Load cell assembly, 1,000/2,000 Lb.	865.00
18	500261-0001	Load cell assembly, 5,000 lb	950.00
18	500230-0001	Load cell assembly, 10,000 lb	1125.00
18	500264-0001	Load cell assembly, 25,000 lb	1700.00
18	500347-0001	Load cell assembly, 50,000 lb	1800.00
18	500349-0001	Load cell assembly, 100,000 lb	2775.00
19	500598-0001	Enclosure assembly, remote 2	(contact factory for quote)
20	500200-0200	Gasket	3.50
21	20825-0047	Screw, seal, PH, 8-32 x 1/2, phil, SS	7.00
22	20825-0041	Screw, seal, PH, 8-32 x 1/8, phil, SS	3.00

Technical specifications subject to change without notice.

Prices suggested list F.O.B. MSI plant, Seattle, WA are subject to change without notice.



MSI-7200 Dyna-Link Remote 2 Enclosure Assembly

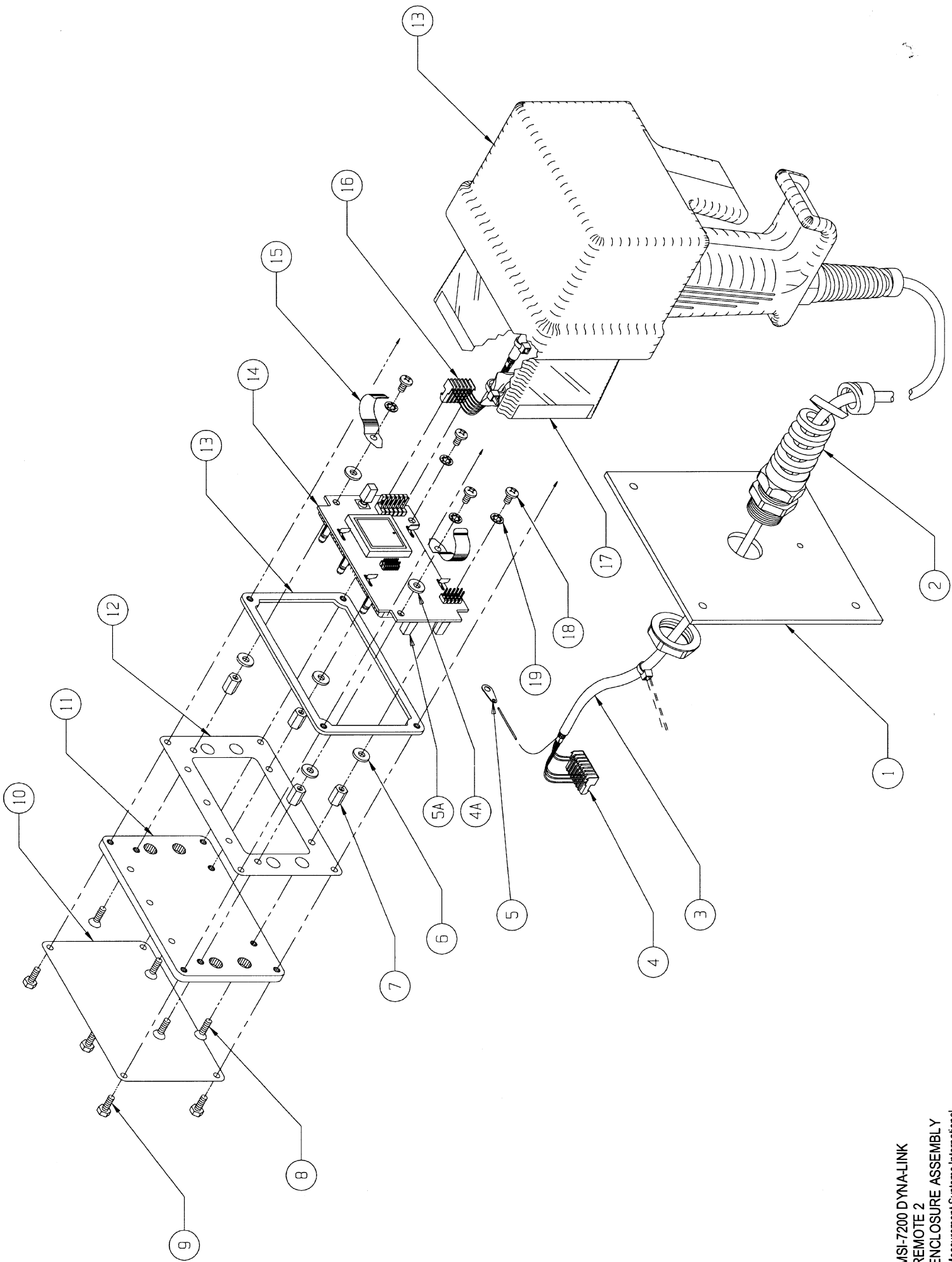
Replacement Parts Price List - Effective 5/06

Measurement Systems International

Item Number	Part Number	Description	List Price
1	500240-0100	Panel	75.00
2	10447	Strain relief, liquid tight, flexible w/nut	10.00
3	500296-0100	Cable, 22 awg, 3 pair, double shielded 25 ft	50.00
4	38610-0822	Connector, # 8, Amp	2.00
4A	10136	Washer, nylon #6	1.00
5	10161	Lug (solder), #6	1.00
5A	10271	Switch	4.00
6	10441	Washer, flat, # 6, SS	1.00
7	10296	Stand off, hex, 6-32 x 3/8, alum	1.00
8	10306	Screw, PH, 6-32 x 3/8, Phil, SS	1.00
9	10353	Screw, HH, M4 x .7 x 10mm, nylon	1.00
10	500258-0100	Label	58.00
11	500269-0200	Panel	75.00
12	500273-0100	Shield, EMI	3.00
13	10305	Enclosure	165.00
14	500596-0001	Display assembly	500.00
15	500274-0100	Spring, contact, EMI	15.00
16	38610-0622	Connector, # 6, Amp	2.00
17	500336-0100	Shield, EMI	25.00
18	30028-0226	Screw, PH, 6-32 x 1/4, Phil, SS	.50
19	20701-0004	Washer, # 6, internal tooth, SS	.50

Technical specifications subject to change without notice.

Prices suggested list F.O.B. MSI plant, Seattle, WA are subject to change without notice.



MSI-7200 DYNA-LINK
 REMOTE 2
 ENCLOSURE ASSEMBLY
 Measurement Systems International
 14240 Interurban Avenue South STE 200
 Seattle, Washington 98168-4661 U.S.A.

MSI-7200 RFL Dyna-Link

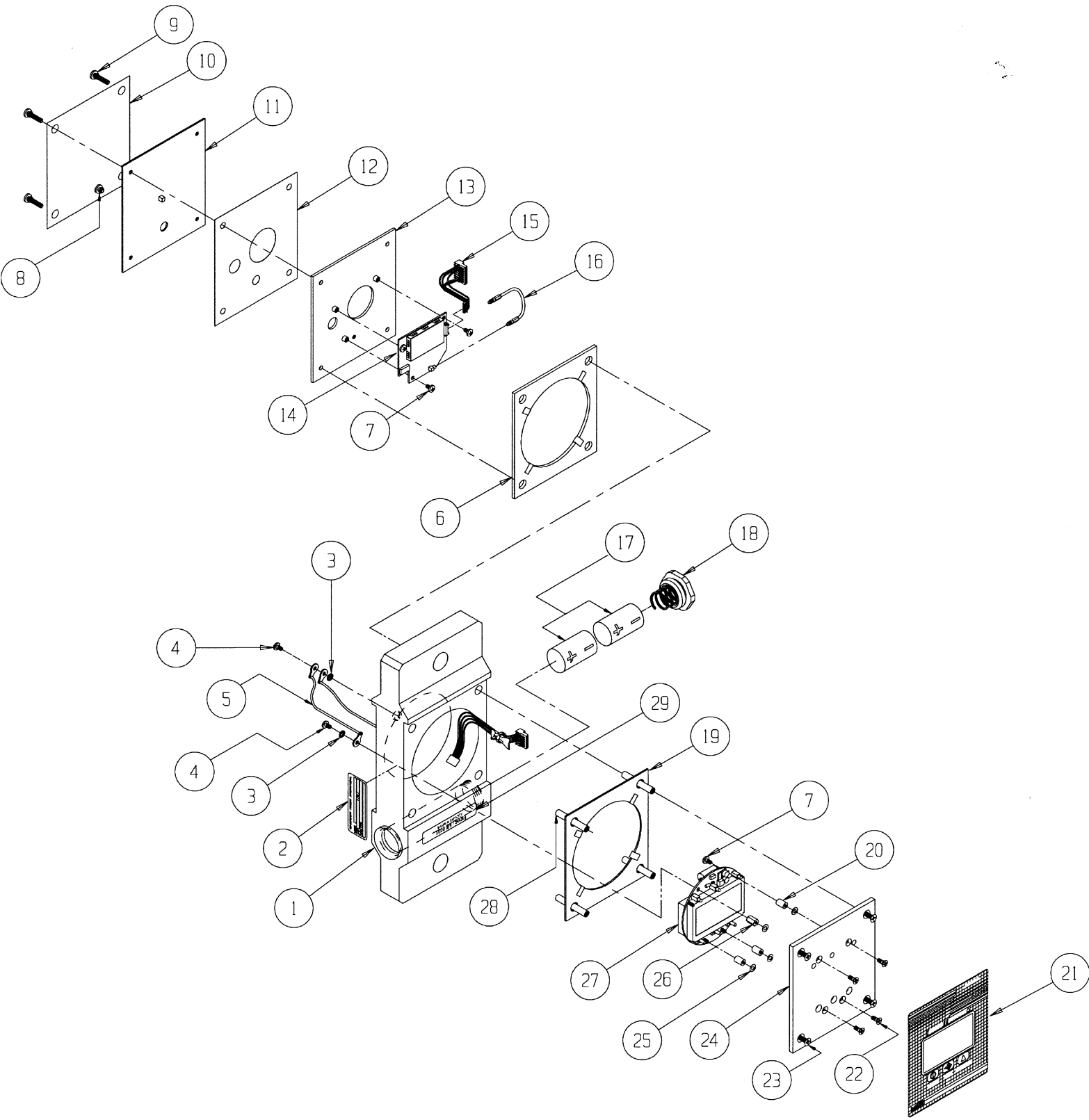
Replacement Parts Price List - Effective 5/06

Measurement Systems International

Item Number	Part Number	Description	List Price
1	500560-0002	Load cell assembly, 500 lb	865.00
1	500260-0002	Load cell assembly, 1,000/2,000 lb	865.00
1	500261-0001	Load cell assembly, 5,000 lb	950.00
1	500230-0002	Load cell assembly, 10,000 lb	1125.00
1	500264-0001	Load cell assembly, 25,000 lb	1700.00
1	500347-0001	Load cell assembly, 50,000 lb	1800.00
1	500349-0001	Load cell assembly, 100,000 lb	2775.00
2	501735-0100	Serial number tag	1.50
3	20701-0004	Washer, #6, internal tooth, SS	.50
4	30028-0226	Screw, PH, 6-32 x 1/4, Phil, SS	.50
5	500620-0001	Ground strap	10.00
6	500200-0200	Gasket	3.50
7	10761	Screw, PH, 6-32 x 3/16, Phil, SS	1.00
8	20825-0041	Screw, seal, PH, 8-32 x 1/8, Phil, SS	3.00
9	12365	Screw, seal, PH, 8-32 x 3/8, Phil, SS	2.50
10	501977-0100	Label, warning, FCC/Canada	25.00
11	501946-0001	Antenna, PCA slot	70.00
12	501940-0100	Gasket, double sided	6.00
13	501935-0100	Plate, back	35.00
14	501892-0001	Transceiver, PCARF	395.00
15	501938-0001	Cable assembly, data	15.00
16	501937-0001	Cable assembly, antenna	85.00
17	10298	Battery, alkaline, C cell	2.50
18	500255-0001	Battery cap assembly	30.00
19	500198-0200	Gasket, front	3.50
20	10296	Standoff, hex, 6-32 x 3/8, aluminum	1.00
21	500193-0100	Label, descriptive	35.00
22	10306	Screw, PH, 6-32 x 3/8, Phil, SS	1.00
23	10878	Screw, PH, 8-32 x 3/8, Phil, SS	1.00
24	500195-0200	Panel, front EMI	25.00
25	10441	Washer, flat #6	1.00
26	11429	Spacer, # 6, .375, w/locking PCB mounts	1.00
27	500575-0001	Display assembly	475.00
28	10596	Spacer, 1/4 round, 8-32 x 1.58 (500 lb thru 10K)	10.00
28	10597	Spacer, 1/4 round, 8-32 x 1.86 (25K)	12.00
28	10598	Spacer, 1/4 round, 8-32 x 2.43 (50K)	13.00
28	10599	Spacer, 1/4 round, 8-32 x 2.78 (100K)	17.00
29	500194-0100	Label, capacity, 1,000 lb /500 kg	15.00
29	500194-0200	Label, capacity, 2,000 lb/1,000 kg	15.00
29	500194-0300	Label, capacity, 5,000 lb/2,500 kg	15.00
29	500194-0400	Label, capacity, 10,000 lb/5,000 kg	15.00
29	500194-0500	Label, capacity, 25,000 lb/12,500 kg	15.00
29	500194-0600	Label, capacity, 50,000 lb/25,000 kg	15.00
29	500194-0700	Label, capacity, 100,000 lb/50,000 kg	15.00
29	500194-0800	Label, capacity, 500 lb/250 kg	15.00
29	500194-0900	Label, capacity, 160,000 lb/80,000 kg	15.00
29	500194-1000	Label, capacity, 220,000 lb/110,000 kg	15.00

Technical specifications subject to change without notice.

Prices suggested list F.O.B. MSI plant, Seattle, WA are subject to change without notice.



MSI-7200 RFH Dyna-Link RF Remote Control

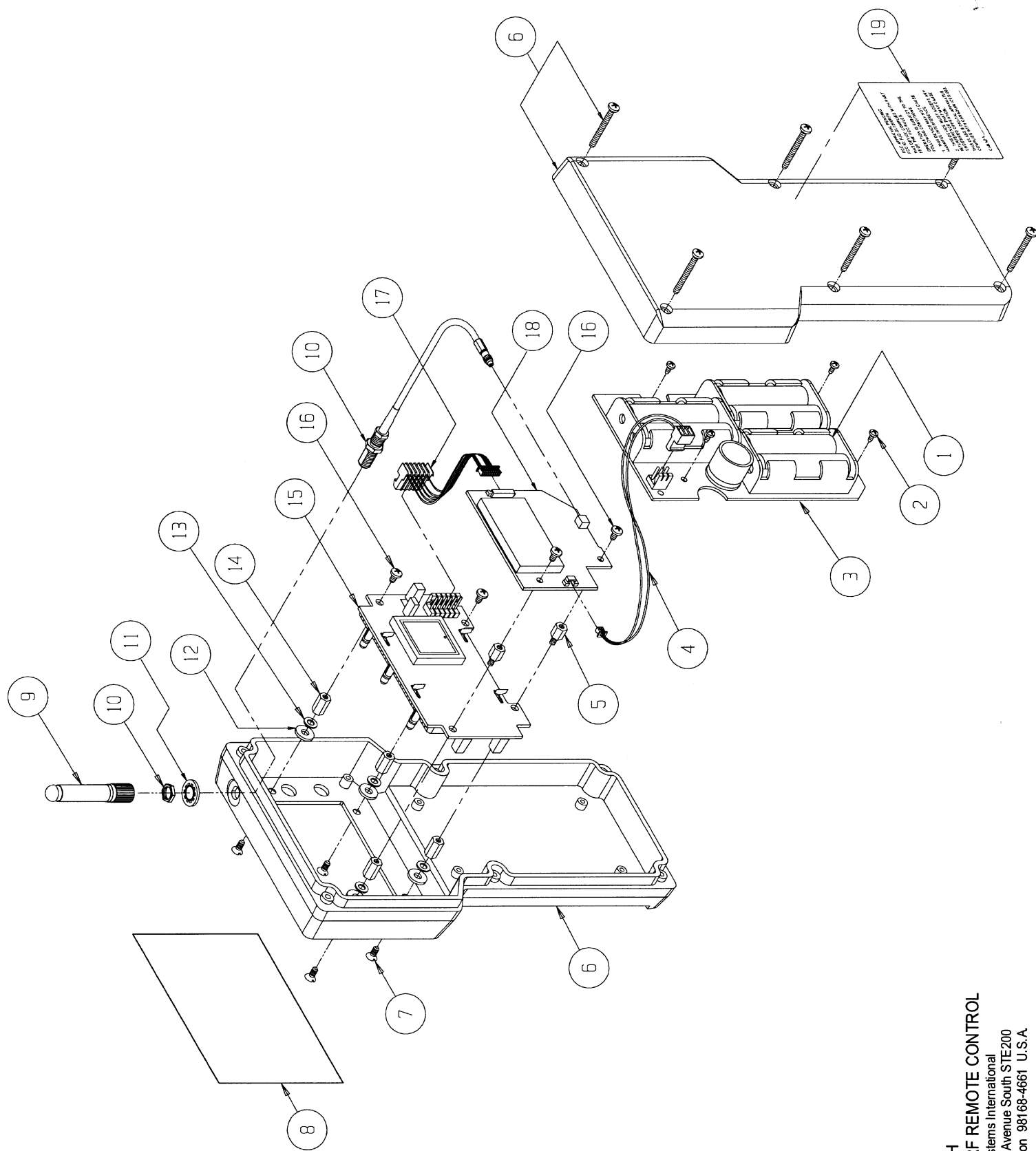
Replacement Parts Price List - Effective 5/06

Measurement Systems International

Item Number	Part Number	Description	List Price
1	11116	Battery, alkaline, AA cell	3.00
2	20975-0012	Screw, PH, 4-40 x 3/16, Phil, SS	1.00
3	501906-0001	Battery, PCA	75.00
4	501914-0001	Cable assembly, antenna	16.00
5	10727	Standoff, hex, 1/4 Lg, 6-32 x 1/4, aluminum	1.00
6	501911-0100	Enclosure, front	85.00
7	10306	Screw, PH, 6-32 x 3/8, Phil, SS	1.00
8	501912-0100	Label, descriptive	65.00
9	12407	Antenna, 916 MHz	25.00
10	501698-0002	Cable assembly, antenna, coax	75.00
11	11067	Washer seal, 1/4 stat-o-seal	2.00
12	30013-0040	Washer, flat #6, SS	.50
13	10441	Washer, flat #6	1.00
14	10296	Standoff, hex, 6-32 x 3/8, aluminum	1.00
15	500596-0001	Display assembly	500.00
16	30028-0225	Screw, PH, 6-32 x 3/16, Phil, SS	.50
17	501915-0001	Cable assembly, interboard	15.00
18	501892-0002	Transceiver, PCA, 916 MHz	395.00
19	501976-0100	Label, FCC / Canada	25.00

Technical specifications subject to change without notice.

Prices suggested list F.O.B. MSI plant, Seattle, WA are subject to change without notice.



MSI-7200 RFH
 DYNALINK RF REMOTE CONTROL
 Measurement Systems International
 14240 Interurban Avenue South STE200
 Seattle, Washington 98168-4661 U.S.A

Shackle Dimensions

Replacement Parts Price List - Effective 5/06

Measurement Systems International

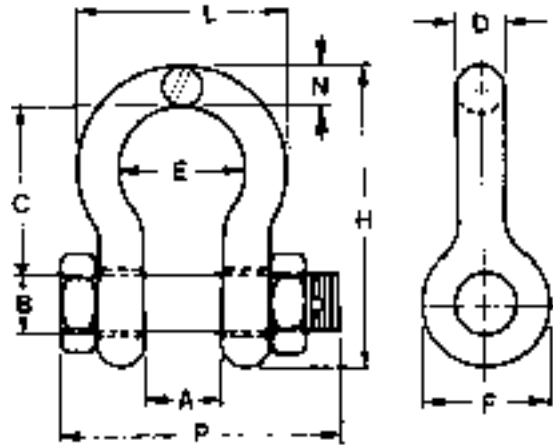
Part Number	W.L.L. Tons	Size	A	B	C	D	E	F	H	L	N	P	Weight (lbs)
10541	3 1/4	.63	1.06	.75	2.38	.63	1.69	1.56	4.22	2.94	.69	.63	1.58
10538	6 1/2	.88	1.44	1.00	3.31	.88	2.28	2.13	5.75	4.03	.97	5.00	3.95
10539	17	1.50	2.38	1.63	5.75	1.50	3.88	3.63	9.88	6.88	1.62	8.25	19.50
10540	25	1.75	2.88	2.00	7.00	1.75	5.00	4.32	11.88	8.50	2.12	9.59	31.30
23650-0030	30	1.50	2.38	1.63	5.75	1.50	3.88	3.63	9.88	6.88	1.62	8.25	20.80
23650-0040	40	1.75	2.88	2.00	7.00	1.75	5.00	4.32	11.88	8.50	2.12	9.59	33.91
23650-0050	55	2.00	3.25	2.25	7.75	2.00	5.75	5.00	13.38	9.75	2.00	11.00	51.75
23650-0110	110	3.00	5.00	3.25	13.00	3.00	7.88	6.50	21.50	14.50	3.63	16.50	178.00
23650-0175	175	4.00	5.50	4.25	14.50	4.00	10.00	9.00	25.69	18.38	4.56	19.75	338.00

Oversized Shackles

501386-0100	40	1.75	2.88	2.00	10.00	1.75	6.00	4.32	15.00	9.50	1.75	9.00	45.00
501082-0100	40	2.25	2.88	2.00	13.50	2.25	8.00	4.32	17.85	12.50	2.25	10.00	90.00
501083-0100	50	2.00	3.25	2.25	12.25	2.00	8.00	5.00	17.00	12.00	2.00	11.00	72.00

Shims

30013-0112 (For use with 50K/70K ton shackles)





"We Weigh Quality First"



Measurement Systems International

14240 Interurban Avenue South STE 200
Seattle, Washington 98168-4661 U.S.A.
Phone: 206-433-0199 • Fax: 206-244-8470
Web: www.msiscscales.com • Email: info@msiscscales.com