
MSI-600 Check-Weigh

Over/Under - Bench Scales

Confidential Replacement Parts Price List
Measurement Systems International
Authorized Distributor Use Only

Effective 7/03

Table of Contents
Replacement Parts Price List - Effective 7/03
Measurement Systems International

Page

Discount, Terms, Conditions and Warranty	3
MSI Exchange Parts	4
MSI-600 Series Check-Weigh Head Assembly	5
MSI-600 Series Check-Weigh Head Assembly (4-90 & on)	7
MSI-600 Series Check-Weigh Base Assembly 5 & 10 lb	9
MSI-600 Series Check-Weigh Base Assembly 30 thru 200 lb .	11
MSI-600 Series Check-Weigh Power Supply Assembly	13

Discount, Terms, Conditions and Warranty

Replacement Parts Price List - Effective 5/01

Measurement Systems International

Distributor Discount

The standard distributor discount for MSI replacement parts is 25% and applies to all published prices effective July 2003. All orders are subject to final acceptance by MSI. Orders will be accepted from authorized MSI distributors only. A \$35 USD minimum per purchase order applies for all orders placed by authorized distributors with MSI. Prices listed are F.O.B. factory.

Terms and Conditions (Domestic Sales)

Each authorized distributor/dealer shall have submitted an original credit application signed and dated with an authorized officer/owner signature prior to receiving credit privileges with MSI. Credit applications will remain on file and periodically be updated.

New credit applications will be evaluated by the Credit Department and credit limits established based on the applicants credit history.

MSI's standard credit terms are Net 30 Days. A 1.5% interest penalty is applied on any outstanding balance over 60 days late. Accounts 30 days past due are automatically subject to prepayment or C.O.D. terms. Any work in process is put on credit hold until payment and any applicable penalty charges are received. Accounts 60 days past due will result in permanent prepayment or C.O.D. terms.

Domestic Shipments: Unless otherwise specified by dealer/distributor, all domestic shipments up to 150 pounds will be shipped prepaid via UPS and applicable charges will be added to the order invoice. MSI may prepay and add freight charges from other carriers when specified by dealer/distributor. Otherwise, shipments using carriers other than UPS may be shipped freight collect.

Returned equipment: Permission must be obtained from MSI before any equipment is returned and shipment must bear the Return Material Authorization (RMA) Number for identification. New equipment returned for credit should be received in resalable condition and is subject to a 15% service charge. MSI reserves the right to deduct for any sustained damage in transit. No deduction for returned equipment is accountable from a remittance until a credit memorandum has been issued by MSI.

Unless otherwise authorized by MSI, all returned equipment will only be accepted when freight has been prepaid.

Order cancellation: MSI will cancel orders for standard equipment at no service charge prior to shipment. A service charge of 15% plus transportation charges will be assessed to orders cancelled after shipment. A service charge for cancellation of custom equipment will be determined on an individual basis.

Exceptions to the above MSI credit policy require written authorization from a Corporate Director and/or Credit Department.

Terms and Conditions (Export Sales)

Export payment terms are by irrevocable Letter of Credit, prepayment or documentary collection depending upon the customer and the residing country. All payments are required in U.S. Dollars.

Export accounts that wish to seek credit terms must submit at least three credit references (preferably in U.S.A.) and a banking reference. Credit issuance will be determined by existing credit standing, level of business with MSI along with the political and economic conditions of the importing country.

Letter of Credit (L/C)

Orders must be covered by an irrevocable commercial Letter of Credit issued by a major bank, payable at sight, incorporating the following

terms and conditions:

Issued in favor of : Measurement Systems International, Inc.
14240 Interurban Avenue South STE 200
Seattle, Washington 98168-4661 U.S.A.

In an amount not to exceed (amount of L/C) U.S. Dollars, FOB Plant, Seattle, Washington.

Advised through: Bank of America
International Trade Operations
800 Fifth Avenue, Floor 31
Seattle, Washington, 98104 USA
SWIFT: BOFAUS6SSEA

Bank of America must be designated as the negotiating bank and must be authorized to reimburse itself for drawings by:

- Debiting the opening bank's account with Bank of America, San Francisco, California.
- Claiming telegraphically on a United States bank.

The L/C is to be payable against the presentation of the following documents:

- Draft drawn on Bank of America "at sight".
- Commercial Invoice.
- Packing List.
- Airway Bill evidencing shipment of the merchandise from Seattle to destination.
- Import permit number, if applicable, noted on the L/C.
- Insurance to be effected by buyer.
- Transshipment and partial shipments allowed. Documents to be presented a minimum of 10 days from Airway Bill date.
- All banking charges other than those of Bank of America are for the buyers account.

The Letter of Credit must be acceptable to MSI before our obligation to the order is considered final.

Payment with Visa/MasterCard is also accepted.

Export Administrative Fees

(Apply with L/C and Documentary Collection term of \$325 USD)



Freight Forwarder

Orders will be shipped whenever possible by a customer specified freight forwarder. When one is not specified, MSI will attempt to ship by the least expensive freight forwarder. By following the above procedures, orders will be processed faster and at less expense. If any other method of shipping and payment is used, the cost of additional export documentation, insurance, freight, etc. will be added to the net selling prices.

Limited Warranty

Warranty Terms are detailed in each operating manual. In general, there is a one year warranty against factory defects on all MSI equipment. Batteries and cables are warranted for 90 days. Warranty repair is to be conducted at the plant unless specifically authorized in writing by MSI. When authorized warranty repair is conducted by the Distributor, the rates paid by MSI are \$35.00 per hour for labor.

MSI Exchange Parts

Replacement Parts/Price List - Effective 7/03

Measurement Systems International

The following are prices for exchange parts. The parts returned to MSI must be identical to those shipped for exchange. If the parts returned are not identical, not repairable, or are not returned within 30 days, the dealer will be invoiced for the full

amount of replacement cost. Serial number of the scale and purchase order are required when exchange parts are ordered. Prices listed do not include shipping charges.

Product	Price	Product	Price
MSI 600 Check Weigh		MSI 6260 Trans Weigh	
Computer PCB	\$425.00	Indicator Controller PCB	\$500.00
Display PCB	\$425.00	Transmitter/Receiver Set Tuned	\$450.00
Load Cell	\$500.00	Load Cell (2K to 30K only)	\$600.00
		Adapter PCB	\$150.00
MSI 6000 Check Weigh		Crane Controller PCB	\$375.00
Main/Display PCB	\$425.00		
Load Cell	\$500.00	MSI 3700 Magnum Plus	
Option PCB	\$253.00	3600 Load Cell	\$500.00
		3700 Load Cell	\$500.00
MSI 7200 Dyna Link		Retrofit Kit	\$600.00
All PCB (except Amp PCB)	\$325.00		
Amp PCB	\$135.00	MSI 3650/3750 Digital Indicator	
Load Cell (1K to 10K only)	\$600.00	Main/Display PCB	\$425.00
Transmitter/Receiver PCB set	\$350.00	DC/DC PCB	\$130.00
RF Handheld	\$500.00	Option PCB	\$160.00
		Indicator Assy	\$695.00
MSI 3260 Challenger			
Load Cell (all capacities)	\$600.00	MSI 3550 Digital Indicator	
		Computer PCB	\$325.00
MSI 3360 Challenger II		Display PCB	\$270.00
Computer PCB	\$325.00	Interface PCB	\$105.00
Display PCB	\$270.00	Indicator Assy	\$530.00
Load Cell (all capacities)	\$500.00		
IR Remote	\$95.00	MSI CellScale	
		Modem	\$600.00
MSI 4260 Port A Weigh			
Computer/Display PCB	\$750.00	3750CS Front Panel Assy	\$575.00
Remote Receiver PCB	\$150.00		
Load Cell (2K to 30K only)	\$600.00	6260CS Front Casting Assy	\$750.00
Front Casting Assy	\$600.00		
		9260 Front Plate Assy	\$1,195.00
MSI 4300 Port A Weigh Plus			
Main/Display Assy	\$600.00	9300 Front Casting Assy	\$1,145.00
Load Cell (500# to 30K only)	\$600.00		
Battery Tube Assy	\$42.00		
Front Casting Assy (9300 No Modem)	\$950.00		

MSI warrants all exchange parts against defects in workmanship and materials for a period of 90 days from date of purchase. Pending stock status, exchange parts can be ordered and shipped the same day, if ordered prior to 12:00 PM, Pacific Time.

Technical specifications subject to change without notice.
Prices suggested list F.O.B. MSI plant, Seattle, WA are subject to change without notice.

MSI-600 Series Check-Weigh Head Assembly

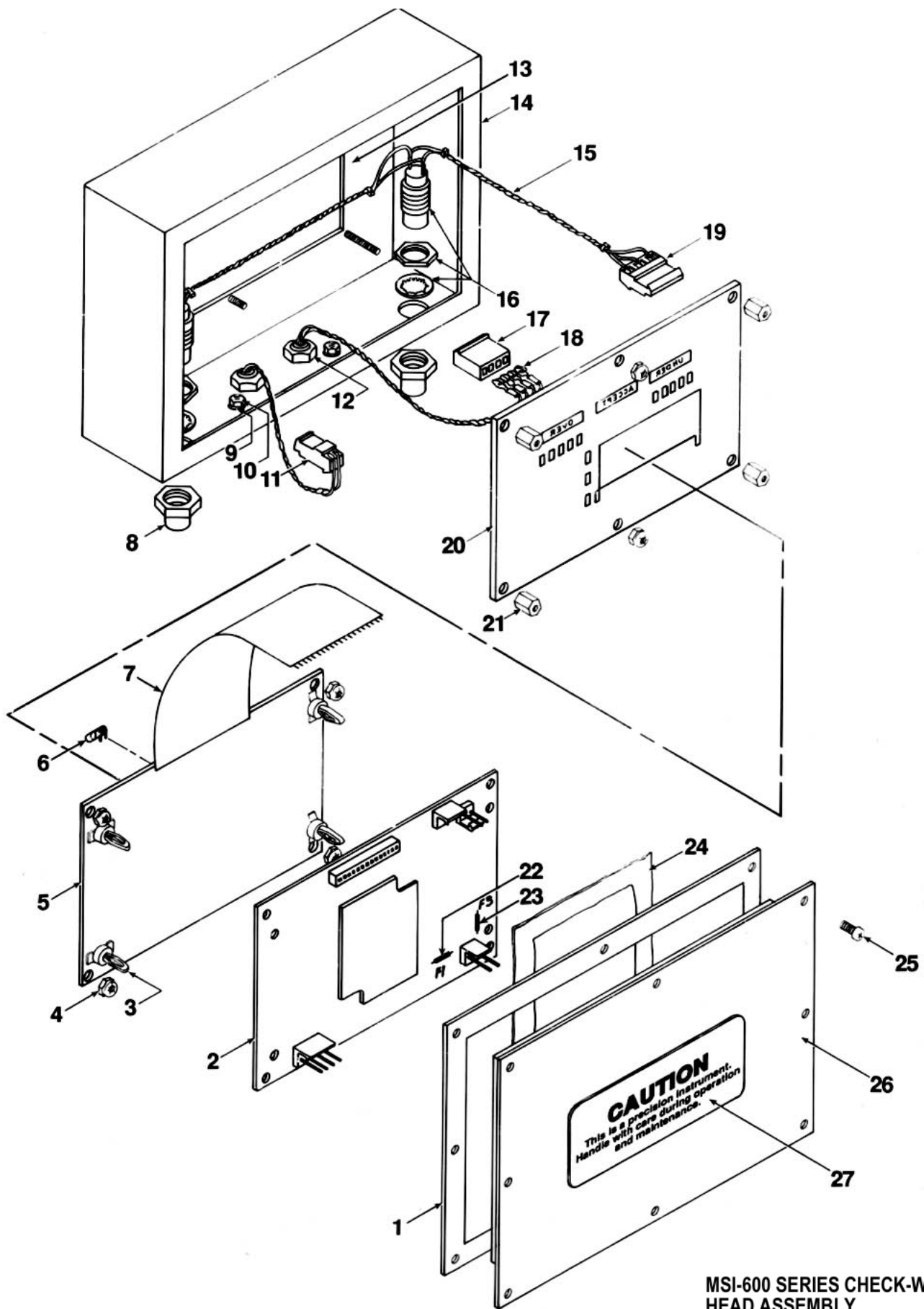
Replacement Parts Price List - Effective 5/01

Measurement Systems International

Item Number	Part Number	Description	List Price	Discount
1	C00472-0002	Gasket		15.00
2	D00590-0003	PCB, computer		600.00
3	20210-0001	Post, support, nylon		.50
4	30035-0008	Nut, hex, 4-40, nyloc, SS		1.00
5	D00591-0001	PCB, display		500.00
6	37300-0001	Lamp		4.00
7	38780-0314	Jumper, flex		5.00
8	21650-3030	Boot, switch		5.00
9	21901-0006	Washer, seal, 6-32, SS		3.00
10	30017-0015	Nut, hex, 6-32, SS		.50
11	38604-0222	Connector, Panduit		1.00
12	30055-0004	Nut, hex, 5/16-24, SS		.50
13	B00540-0100	Window, clear (must order w/adhesive)		22.00
13	500043-0100	Adhesive, window (for B00540-0100)		13.00
14	500086-0100	Head		110.00
15	B00436-0003	Switch assembly		60.00
16	36150-0001	Switch		20.00
17	38605-0004	Connector, Molex		1.00
18	38156-0022	Pin, crimp		1.00
19	38604-0326	Connector, Panduit		1.00
20	C00479-0001	Label, capacity, 5 lb		60.00
20	C00479-0002	Label, capacity, 10 lb		60.00
20	C00479-0007	Label, capacity, 30 lb		60.00
20	C00479-0004	Label, capacity, 50 lb		obsolete
20	C00479-0005	Label, capacity, 100 lb		obsolete
20	C00479-0006	Label, capacity, 200 lb		obsolete
21	30042-0004	Spacer, 4-40 x 5/16, hex, alum		1.00
22	30575-0003	Fuse, 1/4 amp, 125V, axial, subminiature (F1)		4.00
23	30575-0005	Fuse, 1/2 amp, 125V, axial, subminiature (F3)		3.50
24	25925-0002	Desiccant		1.00
25	20825-0027	Screw, seal, PH, 6-32 x 1/4, Phil, SS		1.00
26	D00805-0100	Panel		50.00
27	B00480-0001	Label		obsolete

Technical specifications subject to change without notice.

Prices suggested list F.O.B. MSI plant, Seattle, WA are subject to change without notice.



MSI-600 SERIES CHECK-WEIGH HEAD ASSEMBLY

Measurement Systems International
 14240 Interurban Avenue South STE 200
 Seattle, Washington 98168-4661 U.S.A.

MSI-600 Series Check-Weigh Head Assembly (4-90 & on)

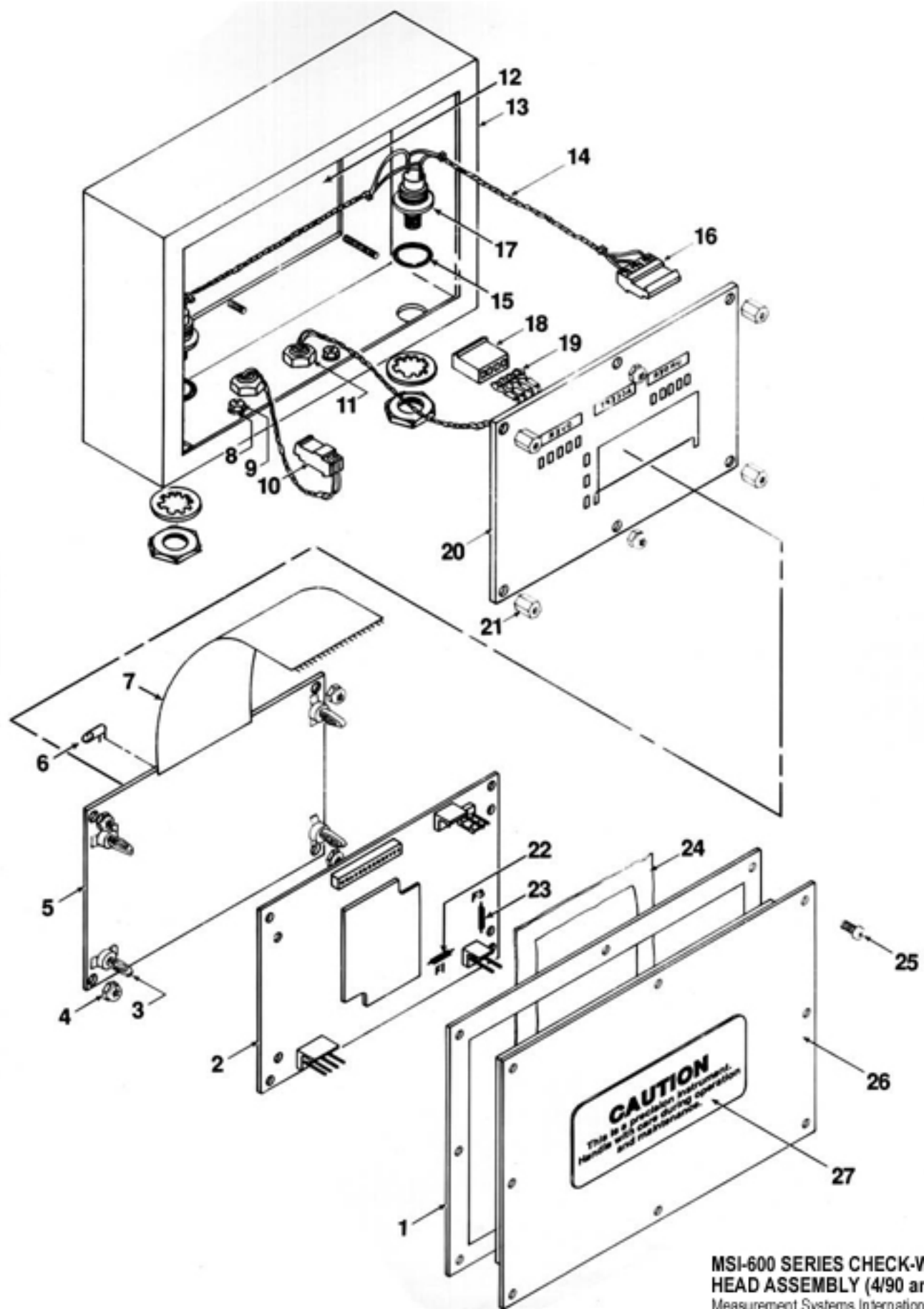
Replacement Parts Price List - Effective 5/01

Measurement Systems International

Item Number	Part Number	Description	List Price	Discount
1	C00472-0002	Gasket		15.00
2	D00590-0003	PCB, computer		600.00
3	20210-0001	Post, support, nylon		.50
4	30035-0008	Nut, hex, 4-40, nyloc, SS		.50
5	D00591-0001	PCB, display		500.00
6	37300-0001	Lamp		4.00
7	38780-0314	Jumper, flex		5.00
8	21901-0008	Washer, seal, 8-32, SS		3.00
9	30017-0016	Nut, hex, 8-32, SS		.50
10	38604-0222	Connector, Panduit		1.00
11	30055-0004	Nut, hex, 5/16-24, SS		.50
12	B00540-0100	Window, clear (must order w/adhesive)		22.00
12	500043-0100	Adhesive, window (for B00540-0100)		13.00
13	500086-0100	Head		110.00
14	500088-0001	Switch assembly		60.00
15	22000-2016	O-Ring		.50
16	38604-0326	Connector, Panduit		1.00
17	36151-0005	Switch		23.00
18	38605-0004	Connector, Molex		1.00
19	38156-0022	Pin, crimp		1.00
20	C00479-0001	Label, capacity, 5 lb		60.00
20	C00479-0002	Label, capacity, 10 lb		60.00
20	C00479-0007	Label, capacity, 30 lb		60.00
20	C00479-0004	Label, capacity, 50 lb		obsolete
20	C00479-0005	Label, capacity, 100 lb		obsolete
20	C00479-0006	Label, capacity, 200 lb		obsolete
21	30042-0004	Spacer, 4-40 x 5/16, hex, alum		1.00
22	30575-0003	Fuse, 1/4 amp, 125V, axial, subminiature (F1)		4.00
23	30575-0005	Fuse, 1/2 amp, 125V, axial, subminiature (F3)		3.50
24	25925-0002	Desiccant		1.00
25	20825-0027	Screw, seal, PH, 6-32 x 1/4, Phil, SS		1.00
26	D00805-0100	Panel		50.00
27	B00480-0001	Label		obsolete

Technical specifications subject to change without notice.

Prices suggested list F.O.B. MSI plant, Seattle, WA are subject to change without notice.



**MSI-600 SERIES CHECK-WEIGH
HEAD ASSEMBLY (4/90 and on)**

Measurement Systems International
14240 Interurban Avenue South STE 200
Seattle, Washington 98168-4661 U.S.A.

MSI-600 Series Check-Weigh Base Assembly 5 & 10 lb

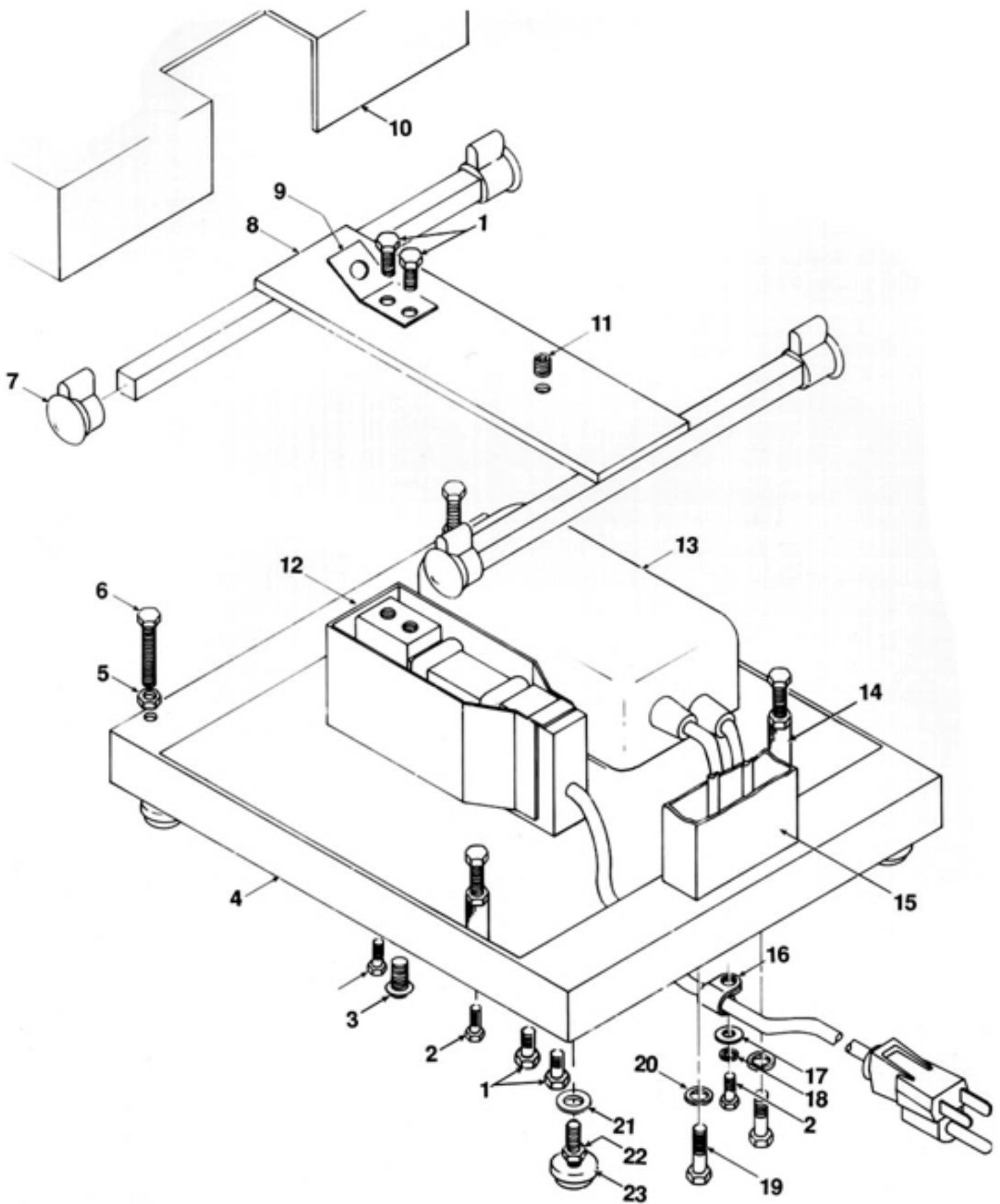
Replacement Parts Price List - Effective 5/01

Measurement Systems International

Item Number	Part Number	Description	List Price	Discount
1	20850-0066	Bolt, HH, 10-32 x 1/2, SS		1.00
2	20850-0045	Bolt, HH, 8-32 x 3/8, SS		.50
3	20800-0066	Screw, BH, 10-32 x 1/2, socket, SS		.50
4	500339-0001	Base		obsolete
5	30017-0016	Nut, hex, 8-32, SS		.50
6	20850-0051	Bolt, HH, 8-32 x 1, SS		1.00
7	B00549-0100	Bumper		4.00
8	D00621-0002	Spider		obsolete
9	B00477-0001	Ground strap		15.00
10	D00621-0003	Platter		obsolete
11	20952-0043	Screw, set, 8-32 x 1/4, allen, SS		obsolete
12	D00634-0003	Load cell assembly, 5 lb		625.00
12	D00634-0005	Load cell assembly, 5 lb remote		625.00
12	D00634-0004	Load cell assembly, 10 lb		625.00
12	D00634-0006	Load cell assembly, 10 lb remote		625.00
13	D00632-0015	Power supply assembly, 115VAC		400.00
14	10349	Stand off, 8-32 x 1, 1/4 hex, SS		5.00
15	D00815-0100	Neck		125.00
16	22722-0001	Clamp, cable, SS		obsolete
17	30013-0040	Washer, flat, #6, SS		.50
18	30016-0034	Washer, lock, split, #6, SS		.50
19	20850-0127	Bolt, HH, 1/4-20 x 1-3/4, SS		1.00
20	30016-0038	Washer, lock, split, 1/4, SS		.50
21	30013-0046	Washer, flat, 1/4, SS		.50
22	30017-0020	Nut, hex, 1/4-20, SS		.50
23	23500-0003	Foot, 1/4-20 x 1, SS		10.00

Technical specifications subject to change without notice.

Prices suggested list F.O.B. MSI plant, Seattle, WA are subject to change without notice.



**MSI-600 SERIES CHECK-WEIGH
BASE ASSEMBLY, 5 and 10 LB**
Measurement Systems International
14240 Interurban Avenue South STE 200
Seattle, Washington 98168-4661 U.S.A.

MSI-600 Series Check-Weigh Base Assembly 30 thru 200 lb

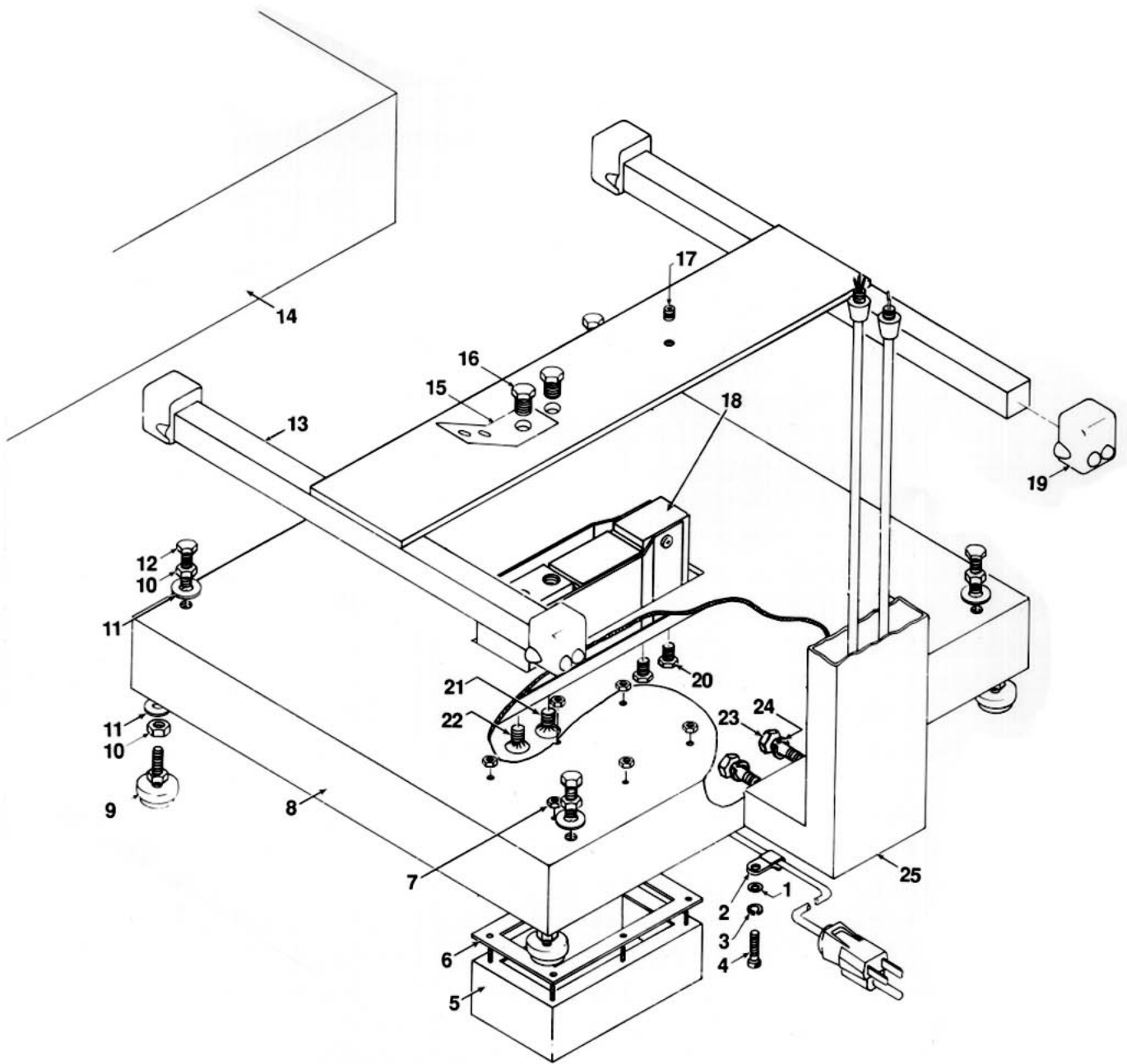
Replacement Parts Price List - Effective 5/01

Measurement Systems International

Item Number	Part Number	Description	List Price	Discount
1	30013-0040	Washer, flat, #6, SS		1.00
2	22722-0001	Clamp, cable, SS		obsolete
3	30016-0034	Washer, lock, split, #6, SS		1.00
4	30028-0228	Screw, PH, 6-32 x 3/8, Phil, SS		1.00
5	D00632-0015	Power supply assembly, 115VAC		400.00
6	B00478-0003	Gasket		7.00
7	30035-0015	Nut, hex, 6-32, nyloc, SS		.50
8	500150-0100	Base		obsolete
9	23500-0003	Foot		10.00
10	30017-0020	Nut, hex, 1/4-20, SS		.50
11	30013-0046	Washer, flat, 1/4, SS		.50
12	20850-0123	Bolt, HH, 1/4-20 x 1, SS		1.00
13	500742-0100	Spider		350.00
14	500153-0100	Platter		obsolete
15	B00477-0001	Ground strap		15.00
16	A00043-0001	Screw, machined, 5/16-24 x 1/2, hex, SS		obsolete
17	20952-0006	Screw, set, 10-32 x 1/2, allen, SS		obsolete
18	D00576-0011	Load cell assembly, 30/50 lb		650.00
18	D00576-0013	Load cell assembly, 30/50 lb remote		650.00
18	D00576-0012	Load cell assembly, 100/200 lb		650.00
18	D00576-0014	Load cell assembly, 100/200 lb remote		650.00
19	500741-0100	Bumper		6.00
20	20850-0135	Bolt, HH, 5/16-24 x 1/2, SS		1.00
21	20800-0066	Screw, BH, 10-32 x 1/2, socket, SS		.50
22	20850-0066	Bolt, HH, 10-32 x 1/2, SS		1.00
23	20850-0127	Bolt, 1/4-20 x 1-3/4, hex, SS		1.00
24	30016-0038	Washer, lock, split, 1/4, SS		.50
25	500152-0100	Neck		obsolete

Technical specifications subject to change without notice.

Prices suggested list F.O.B. MSI plant, Seattle, WA are subject to change without notice.



**MSI-600 SERIES CHECK-WEIGH
BASE ASSEMBLY, 30 through 200 LB**

Measurement Systems International
14240 Interurban Avenue South STE 200
Seattle, Washington 98168-4661 U.S.A.

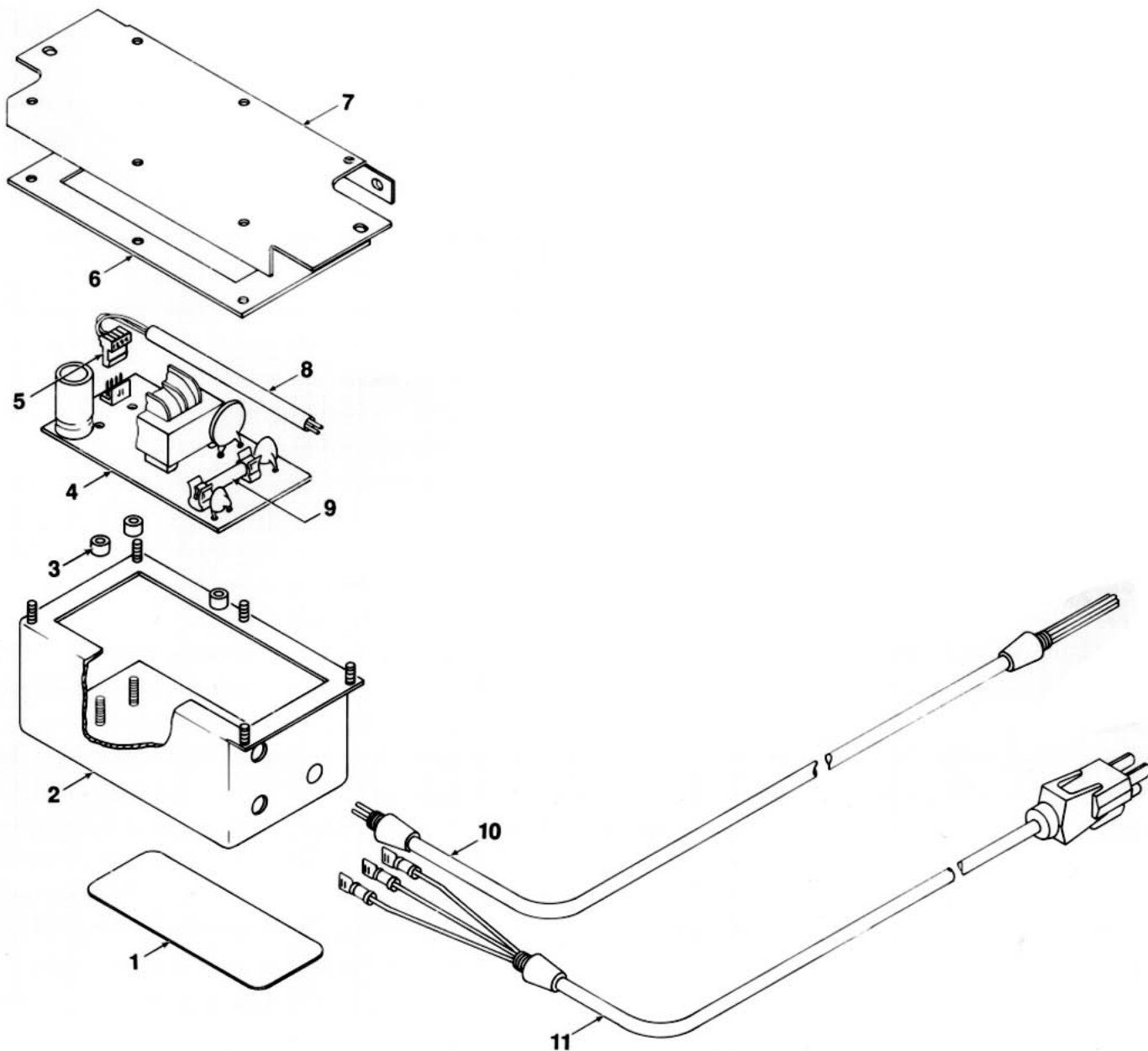
MSI-600 Series Check-Weigh Power Supply Assembly

Replacement Parts Price List - Effective 5/01

Measurement Systems International

Item Number	Part Number	Description	List Price	Discount
1	C00480-0001	Label		20.00
2	D00740-0200	Enclosure		160.00
3	30003-0002	Spacer, #4 x 3/16, fiber		1.00
4	D00630-0001	PCB, power supply, 115 VAC		140.00
4	D00630-0003	PCB, power supply, 115 VAC w/RS232		150.00
5	38610-0422	Connector, Amp		1.00
6	B00478-0003	Gasket		7.00
7	D00741-0200*	Plate, mounting		35.00
8	25350-0006	Tubing, fiberglass		1.00
9	30577-0006	Fuse, 1/8 Amp, 250V, time-delay		5.00
10	B00524-0038	Cable, power, DC		60.00
11	B00525-0001	Cable, power, AC		40.00

* Item not used on all models.



**MSI-600 SERIES CHECK-WEIGH
POWER SUPPLY ASSEMBLY**
Measurement Systems International
14240 Interurban Avenue South STE 200
Seattle, Washington 98168-4661 U.S.A.



"We Weigh Quality First"

 **Measurement Systems International**

14240 Interurban Avenue South STE 200
Seattle, Washington 98168-4661 U.S.A.
Phone: 206-433-0199 • Fax: 206-244-8470
Web: www.MSIscales.com • Email: info@MSIscales.com