

---

# **MSI-5300 Load Ranger**

## **Portable Vehicle Scales**

Confidential Replacement Parts Price List  
Measurement Systems International  
Authorized Distributor Use Only

Effective 7/03

---

---

# Table of Contents

Replacement Parts Price List - Effective 7/03

## Measurement Systems International

---

Page

Discount, Terms, Conditions and Warranty .....	3
MSI-5300 Load Ranger Pad Assembly .....	4

---

# Discount, Terms, Conditions and Warranty

Replacement Parts Price List - Effective 7/03

## Measurement Systems International

---

### Distributor Discount

The standard distributor discount for MSI replacement parts is 25% and applies to all published prices effective July 2003. All orders are subject to final acceptance by MSI. Orders will be accepted from authorized MSI distributors only. A \$35 USD minimum per purchase order applies for all orders placed by authorized distributors with MSI. Prices listed are F.O.B. factory.

### Terms and Conditions (Domestic Sales)

Each authorized distributor/dealer shall have submitted an original credit application signed and dated with an authorized officer/owner signature prior to receiving credit privileges with MSI. Credit applications will remain on file and periodically be updated.

New credit applications will be evaluated by the Credit Department and credit limits established based on the applicants credit history.

MSI's standard credit terms are Net 30 Days. A 1.5% interest penalty is applied on any outstanding balance over 60 days late. Accounts 30 days past due are automatically subject to prepayment or C.O.D. terms. Any work in process is put on credit hold until payment and any applicable penalty charges are received. Accounts 60 days past due will result in permanent prepayment or C.O.D. terms.

**Domestic Shipments:** Unless otherwise specified by dealer/distributor, all domestic shipments up to 150 pounds will be shipped prepaid via UPS and applicable charges will be added to the order invoice. MSI may prepay and add freight charges from other carriers when specified by dealer/distributor. Otherwise, shipments using carriers other than UPS may be shipped freight collect.

**Returned equipment:** Permission must be obtained from MSI before any equipment is returned and shipment must bear the Return Material Authorization (RMA) Number for identification. New equipment returned for credit should be received in resalable condition and is subject to a 15% service charge. MSI reserves the right to deduct for any sustained damage in transit. No deduction for returned equipment is accountable from a remittance until a credit memorandum has been issued by MSI.

Unless otherwise authorized by MSI, all returned equipment will only be accepted when freight has been prepaid.

**Order cancellation:** MSI will cancel orders for standard equipment at no service charge prior to shipment. A service charge of 15% plus transportation charges will be assessed to orders cancelled after shipment. A service charge for cancellation of custom equipment will be determined on an individual basis.

Exceptions to the above MSI credit policy require written authorization from a Corporate Director and/or Credit Department.

### Terms and Conditions (Export Sales)

Export payment terms are by irrevocable Letter of Credit, prepayment or documentary collection depending upon the customer and the residing country. All payments are required in U.S. Dollars.

Export accounts that wish to seek credit terms must submit at least three credit references (preferably in U.S.A.) and a banking reference. Credit issuance will be determined by existing credit standing, level of business with MSI along with the political and economic conditions of the importing country.

### Letter of Credit (L/C)

Orders must be covered by an irrevocable commercial Letter of Credit issued by a major bank, payable at sight, incorporating the following

terms and conditions:

Issued in favor of : Measurement Systems International, Inc.  
14240 Interurban Avenue South STE 200  
Seattle, Washington 98168-4661 U.S.A.

In an amount not to exceed (amount of L/C) U.S. Dollars, FOB Plant, Seattle, Washington.

Advised through: Bank of America  
International Trade Operations  
800 Fifth Avenue, Floor 31  
Seattle, Washington, 98104 USA  
SWIFT: BOFAUS6SSEA

Bank of America must be designated as the negotiating bank and must be authorized to reimburse itself for drawings by:

- Debiting the opening bank's account with Bank of America, San Francisco, California.
- Claiming telegraphically on a United States bank.

The L/C is to be payable against the presentation of the following documents:

- Draft drawn on Bank of America "at sight".
- Commercial Invoice.
- Packing List.
- Airway Bill evidencing shipment of the merchandise from Seattle to destination.
- Import permit number, if applicable, noted on the L/C.
- Insurance to be effected by buyer.
- Transshipment and partial shipments allowed. Documents to be presented a minimum of 10 days from Airway Bill date.
- All banking charges other than those of Bank of America are for the buyers account.

The Letter of Credit must be acceptable to MSI before our obligation to the order is considered final.

Payment with Visa/MasterCard is also accepted.

### Export Administrative Fees

(Apply with L/C and Documentary Collection term of \$325 USD)



### Freight Forwarder

Orders will be shipped whenever possible by a customer specified freight forwarder. When one is not specified, MSI will attempt to ship by the least expensive freight forwarder. By following the above procedures, orders will be processed faster and at less expense. If any other method of shipping and payment is used, the cost of additional export documentation, insurance, freight, etc. will be added to the net selling prices.

### Limited Warranty

Warranty Terms are detailed in each operating manual. In general, there is a one year warranty against factory defects on all MSI equipment. Batteries and cables are warranted for 90 days. Warranty repair is to be conducted at the plant unless specifically authorized in writing by MSI. When authorized warranty repair is conducted by the Distributor, the rates paid by MSI are \$35.00 per hour for labor.

---

# MSI-5300 Load Ranger Pad Assembly

Replacement Parts Price List - Effective 7/03

## Measurement Systems International

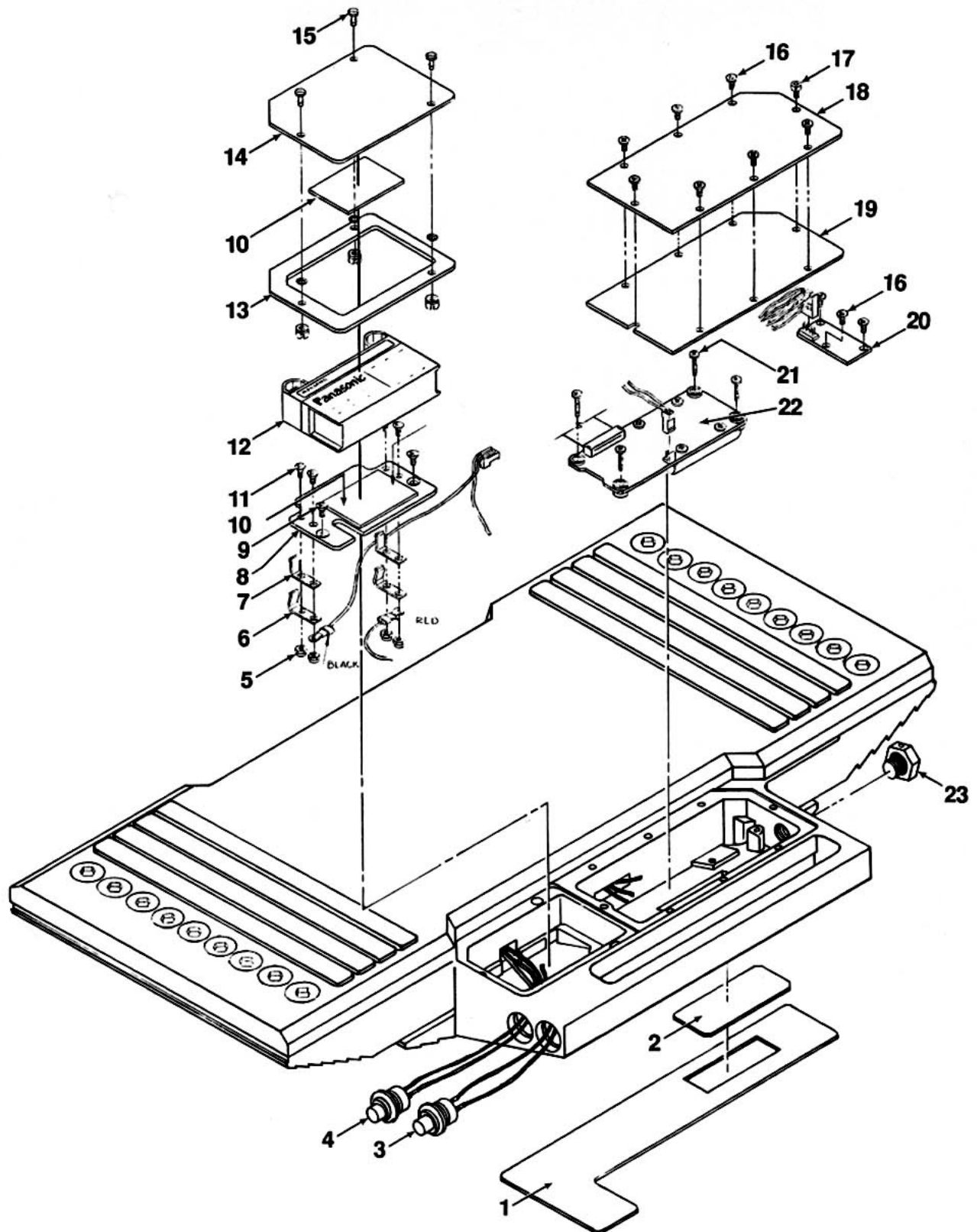
---

Item Number	Part Number	Description	List Price
1	D00742-0100	Label with window, capacity, 20,000 x 20 lb	45.00
1A	D00742-0200	Label, capacity, 10,000 x 10 kg	10.00
1A	D00742-0300	Label, capacity, 20,000 x 50 lb	10.00
1A	D00742-0400	Label, capacity, 10,000 x 20 kg	10.00
2	C00613-0100	Window	20.00
3	36151-0003	Switch	45.00
4	36151-0007	Switch	35.00
5	30036-0005	Nut, hex, 4-40, nyloc, SS, low profile	1.00
6	C00657-0200	Clip, battery	10.00
7	C00657-0100	Clip, battery	12.00
8	C00659-0100	Plate, mounting	40.00
9	30026-0228	Screw, FH, 6-32 X 3/8, Phil, SS	.50
10	C00655-0100	Pad, shock mount, battery	2.00
11	30026-0213	Screw, FH, 4-40 x 5/16, Phil, SS	.50
12	C00654-0001	Battery assembly	50.00
13	C00660-0100	Gasket	3.50
14	C00608-0100	Cover	45.00
15	20006-0005	Fastener, 1/4 turn	3.00
16	30028-0227	Screw, PH, 6-32 X 5/16, Phil, SS	.50
17	10212	Screw, cap, SH, 6-32 X 3/8, SS, w/hole	4.00
18	C00607-0100	Cover	35.00
19	C00661-0100	Gasket	2.50
20	D00783-0002	PCB, calibration	40.00
21	30028-0217	Screw, PH, 4-40 x 5/8, Phil, SS	.50
22	D00732-0001	PCB, display	400.00
23	A00093-0100	Plug, access	15.00

---

Technical specifications subject to change without notice.

Prices suggested list F.O.B. MSI plant, Seattle, WA are subject to change without notice.



# **MSI-5300 LOAD RANGER PAD ASSEMBLY**

Measurement Systems International  
14240 Interurban Avenue South STE 200  
Seattle, Washington 98168-4661 U.S.A.



*"We Weigh Quality First"*



**Measurement Systems International**

14240 Interurban Avenue South STE 200  
Seattle, Washington 98168-4661 U.S.A.  
Phone: 206-433-0199 • Fax: 206-244-8470  
Web: [www.msiscales.com](http://www.msiscales.com) • Email: [info@msiscales.com](mailto:info@msiscales.com)