
MSI-4300 Porta-Weigh Plus

Overhead Crane Scales

Confidential Replacement Parts Price List
Measurement Systems International
Authorized Distributor Use Only

Effective 7/03

Table of Contents

Replacement Parts Price List - Effective 7/03

Measurement Systems International

Page

Discount, Terms, Conditions and Warranty	3
MSI Exchange Parts	4
MSI-4300 Porta-Weigh Plus Front Casting Assembly	5
MSI-4300 Porta-Weigh Plus Mid-Section Assy 500 thru 10,000 lb	7
MSI-4300 Porta-Weigh Plus Mid-Section Assembly 20 & 30,000 lb	9
MSI-4300 Porta-Weigh Plus Mid-Section Assembly 50 & 70,000 lb ...	11
MSI-4300 Porta-Weigh Plus Battery Casting Assembly	13
MSI-4300 Porta-Weigh Plus Bulkhead Assembly	15
Shackle Dimensions	17

Discount, Terms, Conditions and Warranty

Replacement Parts Price List - Effective 7/03

Measurement Systems International

Distributor Discount

The standard distributor discount for MSI replacement parts is 25% and applies to all published prices effective July 2003. All orders are subject to final acceptance by MSI. Orders will be accepted from authorized MSI distributors only. A \$35 USD minimum per purchase order applies for all orders placed by authorized distributors with MSI. Prices listed are F.O.B. factory.

Terms and Conditions (Domestic Sales)

Each authorized distributor/dealer shall have submitted an original credit application signed and dated with an authorized officer/owner signature prior to receiving credit privileges with MSI. Credit applications will remain on file and periodically be updated.

New credit applications will be evaluated by the Credit Department and credit limits established based on the applicants credit history.

MSI's standard credit terms are Net 30 Days. A 1.5% interest penalty is applied on any outstanding balance over 60 days late. Accounts 30 days past due are automatically subject to prepayment or C.O.D. terms. Any work in process is put on credit hold until payment and any applicable penalty charges are received. Accounts 60 days past due will result in permanent prepayment or C.O.D. terms.

Domestic Shipments: Unless otherwise specified by dealer/distributor, all domestic shipments up to 150 pounds will be shipped prepaid via UPS and applicable charges will be added to the order invoice. MSI may prepay and add freight charges from other carriers when specified by dealer/distributor. Otherwise, shipments using carriers other than UPS may be shipped freight collect.

Returned equipment: Permission must be obtained from MSI before any equipment is returned and shipment must bear the Return Material Authorization (RMA) Number for identification. New equipment returned for credit should be received in resalable condition and is subject to a 15% service charge. MSI reserves the right to deduct for any sustained damage in transit. No deduction for returned equipment is accountable from a remittance until a credit memorandum has been issued by MSI.

Unless otherwise authorized by MSI, all returned equipment will only be accepted when freight has been prepaid.

Order cancellation: MSI will cancel orders for standard equipment at no service charge prior to shipment. A service charge of 15% plus transportation charges will be assessed to orders cancelled after shipment. A service charge for cancellation of custom equipment will be determined on an individual basis.

Exceptions to the above MSI credit policy require written authorization from a Corporate Director and/or Credit Department.

Terms and Conditions (Export Sales)

Export payment terms are by irrevocable Letter of Credit, prepayment or documentary collection depending upon the customer and the residing country. All payments are required in U.S. Dollars.

Export accounts that wish to seek credit terms must submit at least three credit references (preferably in U.S.A.) and a banking reference. Credit issuance will be determined by existing credit standing, level of business with MSI along with the political and economic conditions of the importing country.

Letter of Credit (L/C)

Orders must be covered by an irrevocable commercial Letter of Credit issued by a major bank, payable at sight, incorporating the following

terms and conditions:

Issued in favor of : Measurement Systems International, Inc.
14240 Interurban Avenue South STE 200
Seattle, Washington 98168-4661 U.S.A.

In an amount not to exceed (amount of L/C) U.S. Dollars, FOB Plant, Seattle, Washington.

Advised through: Bank of America
International Trade Operations
800 Fifth Avenue, Floor 31
Seattle, Washington, 98104 USA
SWIFT: BOFAUS6SSEA

Bank of America must be designated as the negotiating bank and must be authorized to reimburse itself for drawings by:

- Debiting the opening bank's account with Bank of America, San Francisco, California.
- Claiming telegraphically on a United States bank.

The L/C is to be payable against the presentation of the following documents:

- Draft drawn on Bank of America "at sight".
- Commercial Invoice.
- Packing List.
- Airway Bill evidencing shipment of the merchandise from Seattle to destination.
- Import permit number, if applicable, noted on the L/C.
- Insurance to be effected by buyer.
- Transshipment and partial shipments allowed. Documents to be presented a minimum of 10 days from Airway Bill date.
- All banking charges other than those of Bank of America are for the buyers account.

The Letter of Credit must be acceptable to MSI before our obligation to the order is considered final.

Payment with Visa/MasterCard is also accepted.

Export Administrative Fees

(Apply with L/C and Documentary Collection term of \$325 USD)



Freight Forwarder

Orders will be shipped whenever possible by a customer specified freight forwarder. When one is not specified, MSI will attempt to ship by the least expensive freight forwarder. By following the above procedures, orders will be processed faster and at less expense. If any other method of shipping and payment is used, the cost of additional export documentation, insurance, freight, etc. will be added to the net selling prices.

Limited Warranty

Warranty Terms are detailed in each operating manual. In general, there is a one year warranty against factory defects on all MSI equipment. Batteries and cables are warranted for 90 days. Warranty repair is to be conducted at the plant unless specifically authorized in writing by MSI. When authorized warranty repair is conducted by the Distributor, the rates paid by MSI are \$35.00 per hour for labor.

MSI Exchange Parts

Replacement Parts/Price List - Effective 7/03

Measurement Systems International

The following are prices for exchange parts. The parts returned to MSI must be identical to those shipped for exchange. If the parts returned are not identical, not repairable, or are not returned within 30 days, the dealer will be invoiced for the full

amount of replacement cost. Serial number of the scale and purchase order are required when exchange parts are ordered. Prices listed do not include shipping charges.

Product	Price	Product	Price
MSI 600 Check Weigh		MSI 6260 Trans Weigh	
Computer PCB	\$425.00	Indicator Controller PCB	\$500.00
Display PCB	\$425.00	Transmitter/Receiver Set Tuned	\$450.00
Load Cell	\$500.00	Load Cell (2K to 30K only)	\$600.00
		Adapter PCB	\$150.00
MSI 6000 Check Weigh		Crane Controller PCB	\$375.00
Main/Display PCB	\$425.00		
Load Cell	\$500.00	MSI 3700 Magnum Plus	
Option PCB	\$253.00	3600 Load Cell	\$500.00
		3700 Load Cell	\$500.00
MSI 7200 Dyna Link		Retrofit Kit	\$600.00
All PCB (except Amp PCB)	\$325.00		
Amp PCB	\$135.00	MSI 3650/3750 Digital Indicator	
Load Cell (1K to 10K only)	\$600.00	Main/Display PCB	\$425.00
Transmitter/Receiver PCB set	\$350.00	DC/DC PCB	\$130.00
RF Handheld	\$500.00	Option PCB	\$160.00
		Indicator Assy	\$695.00
MSI 3260 Challenger			
Load Cell (all capacities)	\$600.00	MSI 3550 Digital Indicator	
		Computer PCB	\$325.00
MSI 3360 Challenger II		Display PCB	\$270.00
Computer PCB	\$325.00	Interface PCB	\$105.00
Display PCB	\$270.00	Indicator Assy	\$530.00
Load Cell (all capacities)	\$500.00		
IR Remote	\$95.00	MSI CellScale	
		Modem	\$600.00
MSI 4260 Port A Weigh			
Computer/Display PCB	\$750.00	3750CS Front Panel Assy	\$575.00
Remote Receiver PCB	\$150.00		
Load Cell (2K to 30K only)	\$600.00	6260CS Front Casting Assy	\$750.00
Front Casting Assy	\$600.00		
		9260 Front Plate Assy	\$1,195.00
MSI 4300 Port A Weigh Plus			
Main/Display Assy	\$600.00	9300 Front Casting Assy	\$1,145.00
Load Cell (500# to 30K only)	\$600.00		
Battery Tube Assy	\$42.00		
Front Casting Assy (9300 No Modem)	\$950.00		

MSI warrants all exchange parts against defects in workmanship and materials for a period of 90 days from date of purchase. Pending stock status, exchange parts can be ordered and shipped the same day, if ordered prior to 12:00 PM, Pacific Time.

Technical specifications subject to change without notice.
Prices suggested list F.O.B. MSI plant, Seattle, WA are subject to change without notice.

MSI-4300 Porta-Weigh Plus Front Casting Assembly

Replacement Parts Price List - Effective 7/03

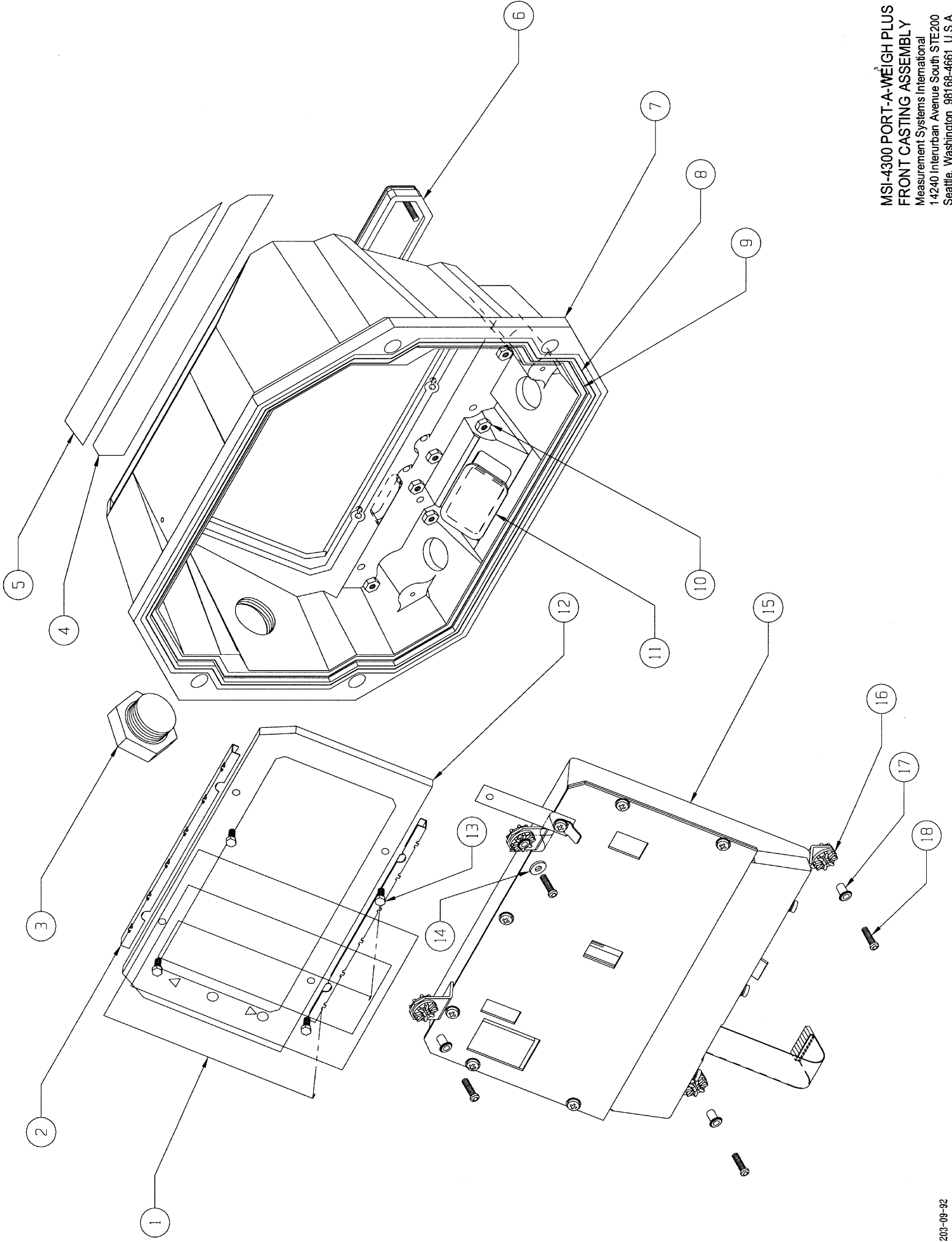
Measurement Systems International

Item Number	Part Number	Description	List Price
1	10243	Wire, acid washed	1.00
2	500121-0100	Bracket, wire mount	25.00
3	B00430-0002	Plug, access	40.00
4	500032-0100	Label, capacity, 250 lb	15.00
4	500032-0200	Label, capacity, 125 kg	15.00
4	500032-0300	Label, capacity, 500 lb	15.00
4	500032-0400	Label, capacity, 250 kg	15.00
4	500032-0500	Label, capacity, 1,000 lb	15.00
4	500032-0600	Label, capacity, 500 kg	15.00
4	500032-0700	Label, capacity, 2,000 lb	15.00
4	500032-0800	Label, capacity, 1,000 kg	15.00
4	500032-0900	Label, capacity, 5,000 lb	15.00
4	500032-1000	Label, capacity, 2,500 kg	15.00
4	500032-1100	Label, capacity, 10,000 lb	15.00
4	500032-1200	Label, capacity, 5,000 kg	15.00
4	500032-1300	Label, capacity, 20,000 lb	15.00
4	500032-1400	Label, capacity, 10,000 kg	15.00
4	500032-1500	Label, capacity, 30,000 lb	15.00
4	500032-1600	Label, capacity, 15,000 kg	15.00
4	500032-1700	Label, capacity, 50,000 lb	15.00
4	500032-1800	Label, capacity, 25,000 kg	15.00
4	500032-1900	Label, capacity, 70,000 lb	15.00
4	500032-2000	Label, capacity, 35,000 kg	15.00
5	500033-0100	Label	23.00
6	501409-0001	Switch assembly 5 position	175.00
6	501409-0002	Switch assembly 7 position	225.00
7	500004-0100	Casting	275.00
8	500156-0100	O-Ring	15.00
9	500156-0200	O-Ring	15.00
10	30017-0015	Nut, hex, 6-32, SS	.50
11	500054-0100	Window, infrared	65.00
12	500031-0100	Window, LCD	60.00
13	30028-0228	Screw, PH, 6-32 x 3/8, Phil, SS	.50
14	30013-0040	Washer, flat, #6, SS	.50
15	500167-xxxx	LCD/EMI shield assembly	1425.00
16	10127	Mount, shock	1.00
17	10175	Spacer, eyelet, .183 OD X .310 ID	1.00
18	30028-0230	Screw, PH, 6-32 x 1/2, Phil, SS	.50

xxxx contact factory

Technical specifications subject to change without notice.

Prices suggested list F.O.B. MSI plant, Seattle, WA are subject to change without notice.



MSI-4300 PORT-A-WEIGH PLUS
 FRONT CASTING ASSEMBLY
 Measurement Systems International
 14240 Interurban Avenue South STE200
 Seattle, Washington 98168-4661 U.S.A.

MSI-4300 Porta-Weigh Plus Mid-Section Assembly 500 thru 10,000 lb

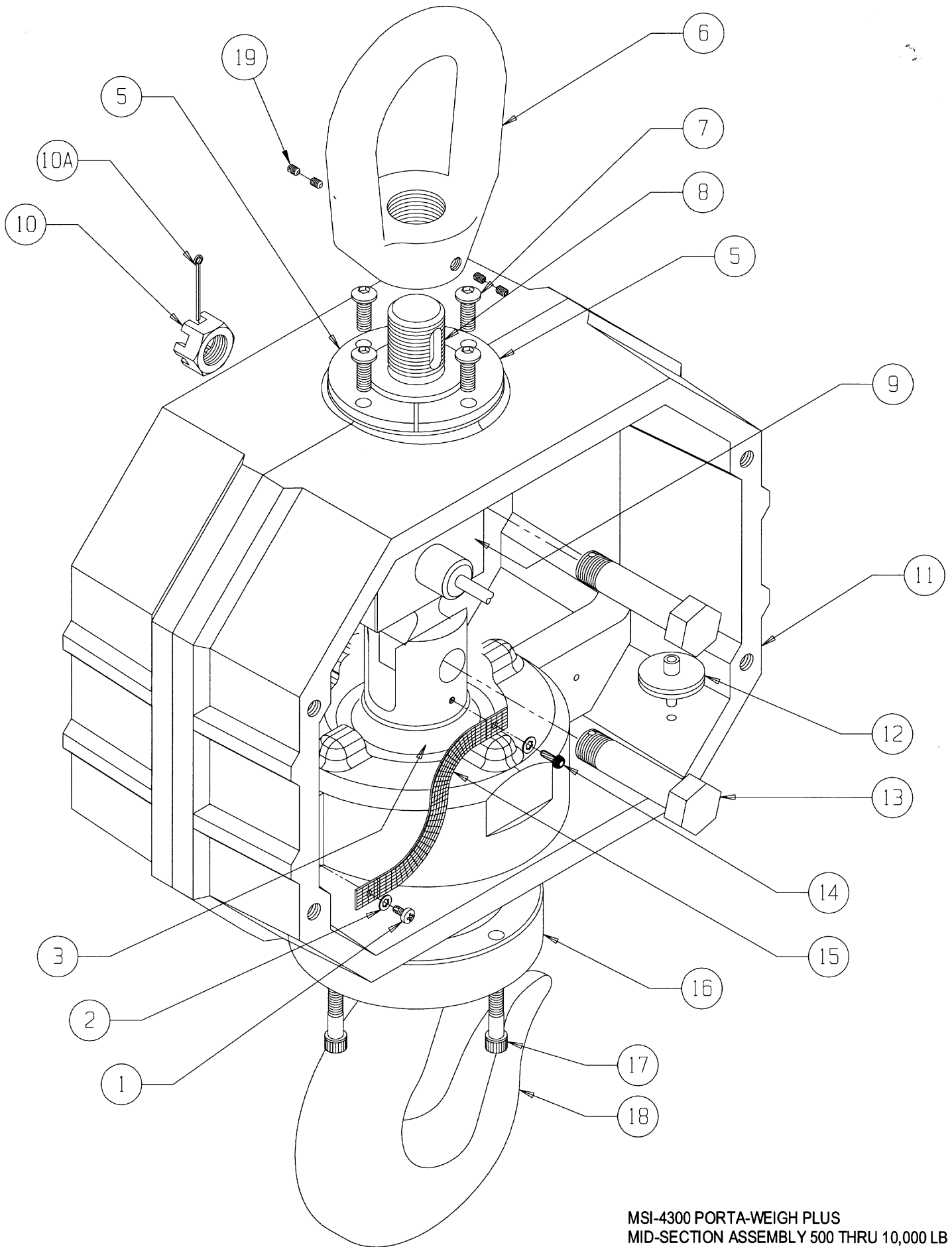
Replacement Parts Price List - Effective 7/03

Measurement Systems International

Item Number	Part Number	Description	List Price
1	20975-0027	Screw, PH, 6-32 x 1/4, Phil, SS	.50
2	20701-0004	Washer, internal tooth, #6, SS	.50
3	B00410-0003	Seal	35.00
5	500786-0100	Collar, top (2 pcs.)	20.00/ea
6	B00413-0002	Eye, lifting 500/2,000 lb	125.00
6	500716-0100	Eye, lifting 5,000/10,000 lb	125.00
7	20800-0120	Screw, BH, 1/4-20 x 5/8, SS	1.00
8	500783-0100	Link, upper	175.00
9	500176-0001	Load cell assembly, 500 lb	factory quote
9	500176-0002	Load cell assembly, 2,000 lb	800.00
9	500176-0003	Load cell assembly, 5,000 lb	800.00
9	500176-0004	Load cell assembly, 10,000 lb	1175.00
10	11458	Nut	1.00
10A	11460	Cotter pin	1.00
11	500010-0100	Casting	300.00
12	23600-0001	Filter	5.00
13	501290-0100	Bolt	15.00
14	10669	Screw, drive, #6 x .25, SS	.50
15	B00514-0001	Ground strap	10.00
16	500760-0100	Collar	35.00
17	20810-0120	Screw, SH, 1/4-20 x 5/8, SS	1.00
18	500787-0001	Hook assembly, swivel, 500/2,000 lb	725.00
	11906	Latch, safety (fits 500787-0001 hook w/hole)	25.00
	10767	Latch, safety (fits 500787-0001 hook)	20.00
18	500297-0001	Hook assembly, swivel, 5,000/10,000 lb	750.00
	11902	Latch, safety (fits 500297-0001 hook w/hole)	30.00
	22680-0002	Latch, safety (fits 500297-0001 hook)	25.00
19	20950-0117	Screw set, 1/4-20 x 3/8, SS	.50

Technical specifications subject to change without notice.

Prices suggested list F.O.B. MSI plant, Seattle, WA are subject to change without notice.



MSI-4300 PORTA-WEIGH PLUS
MID-SECTION ASSEMBLY 500 THRU 10,000 LB
 Measurement Systems International
 14240 Interurban Avenue South STE200
 Seattle, Washington 98168-4661 U.S.A

MSI-4300 Porta-Weigh Plus Mid-Section Assembly 20 & 30,000 lb

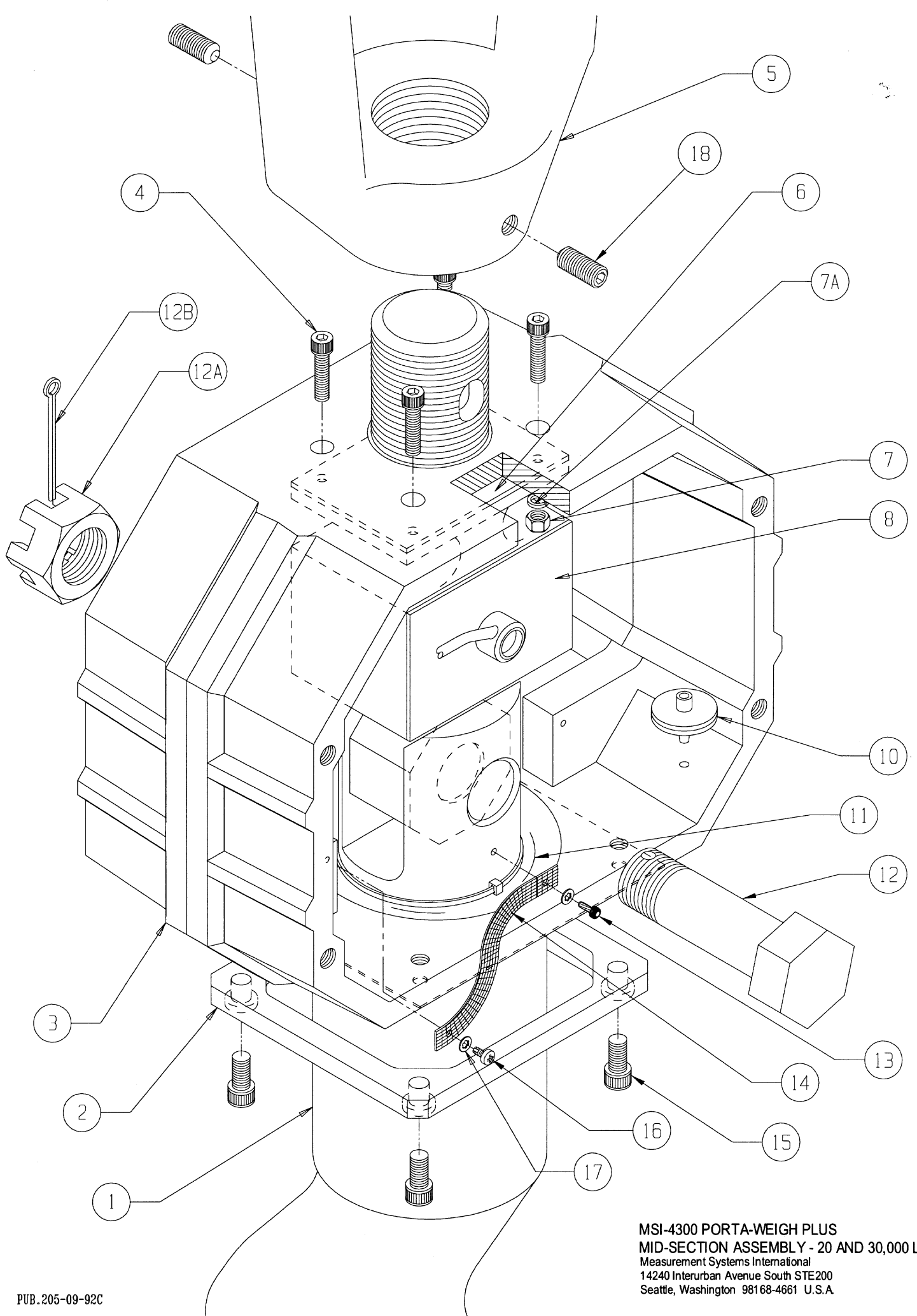
Replacement Parts Price List - Effective 7/03

Measurement Systems International

Item Number	Part Number	Description	List Price
1	500729-0001	Hook assembly, swivel, 20,000 lb	1300.00
	11904	Latch, safety (fits 500729-0001 hook w/hole)	35.00
	10699	Latch, safety (fits 500729-0001 hook)	35.00
1	500729-0002	Hook assembly, swivel, 30,000 lb	1600.00
	11905	Latch, safety (fits 500729-0002 hook w/hole)	60.00
	10700	Latch, safety (fits 500729-0002 hook)	60.00
2	500111-0100	Collar	55.00
3	500009-0100	Casting	300.00
4	20810-0123	Screw, SH, 1/4-20 x 1, SS	1.00
5	500345-0100	Eye, lifting	300.00
6	C00436-0001	Gasket	3.50
7	30017-0020	Nut, hex, 1/4-20, SS	.50
7A	30013-0046	Washer	.50
8	500358-0001	Load cell assembly	1500.00
10	23600-0001	Filter	5.00
11	500218-0100	Seal	55.00
12	501291-0100	Bolt	30.00
12A	11459	Nut	5.00
12B	10751	Cotter Pin	1.00
13	10669	Screw, drive, #6 x .25, SS	.50
14	B00514-0001	Ground strap	10.00
15	20810-0155	Screw, SH, 5/16-18 x 1, SS	1.50
16	20975-0027	Screw, PH, 6-32 x 1/4, Phil, SS	.50
17	20701-0004	Washer, internal tooth, #6, SS	.50
18	20950-0167	Screw set, 3/8-24 x 3/4, SS	1.00

Technical specifications subject to change without notice.

Prices suggested list F.O.B. MSI plant, Seattle, WA are subject to change without notice.



MSI-4300 PORTA-WEIGH PLUS
MID-SECTION ASSEMBLY - 20 AND 30,000 LB
 Measurement Systems International
 14240 Interurban Avenue South STE200
 Seattle, Washington 98168-4661 U.S.A.

MSI-4300 Porta-Weigh Plus Mid-Section Assembly 50 & 70,000 lb

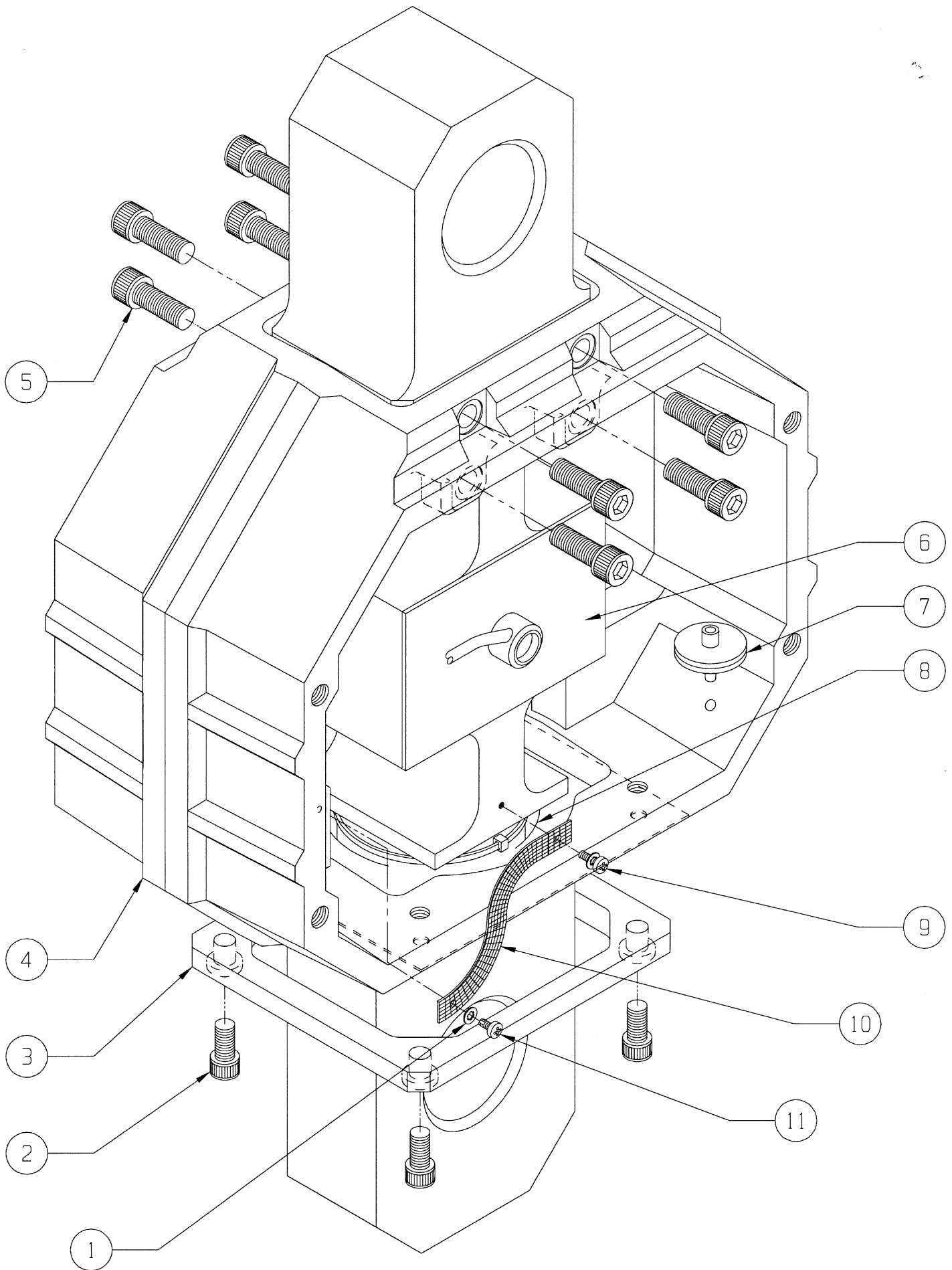
Replacement Parts Price List - Effective 7/03

Measurement Systems International

Item Number	Part Number	Description	List Price
1	20701-0004	Washer, internal tooth, #6, SS	.50
2	20810-0155	Screw, SH, 5/16-18 x 1, SS	1.50
3	500111-0100	Collar	55.00
4	500110-0100	Casting	375.00
5	20810-0183	Screw, SH, 3/8-16 x 1, SS	1.00
6	500178-0001	Load cell assembly	2375.00
7	23600-0001	Filter	5.00
8	500218-0100	Seal	55.00
9	10669	Screw, drive, #6 x .25, SS	.50
10	B00514-0001	Ground strap	10.00
11	20975-0027	Screw, PH, 6-32 x 1/4, Phil, SS	.50
(not shown)	10540	Shackle, 25T, 50,000 lb	350.00
(not shown)	23650-0040	Shackle, 40T, 70,000 lb	695.00
(not shown)	500782-0001	Hook, swivel, 50,000 lb	3325.00
	10744	Latch, safety (fits 500782-0001 hook)	70.00
(not shown)	500782-0002	Hook, swivel, 70,000 lb	4895.00
	10745	Latch, safety (fits 500782-0002 hook)	100.00

Technical specifications subject to change without notice.

Prices suggested list F.O.B. MSI plant, Seattle, WA are subject to change without notice.



MSI-4300 PORT-A-WEIGH PLUS
MID-SECTION ASSEMBLY - 50 & 70,000 LB
 Measurement Systems International
 14240 Interurban Avenue South STE200
 Seattle, Washington 98168-4661 U.S.A.

MSI-4300 Porta-Weigh Plus Battery Casting Assembly

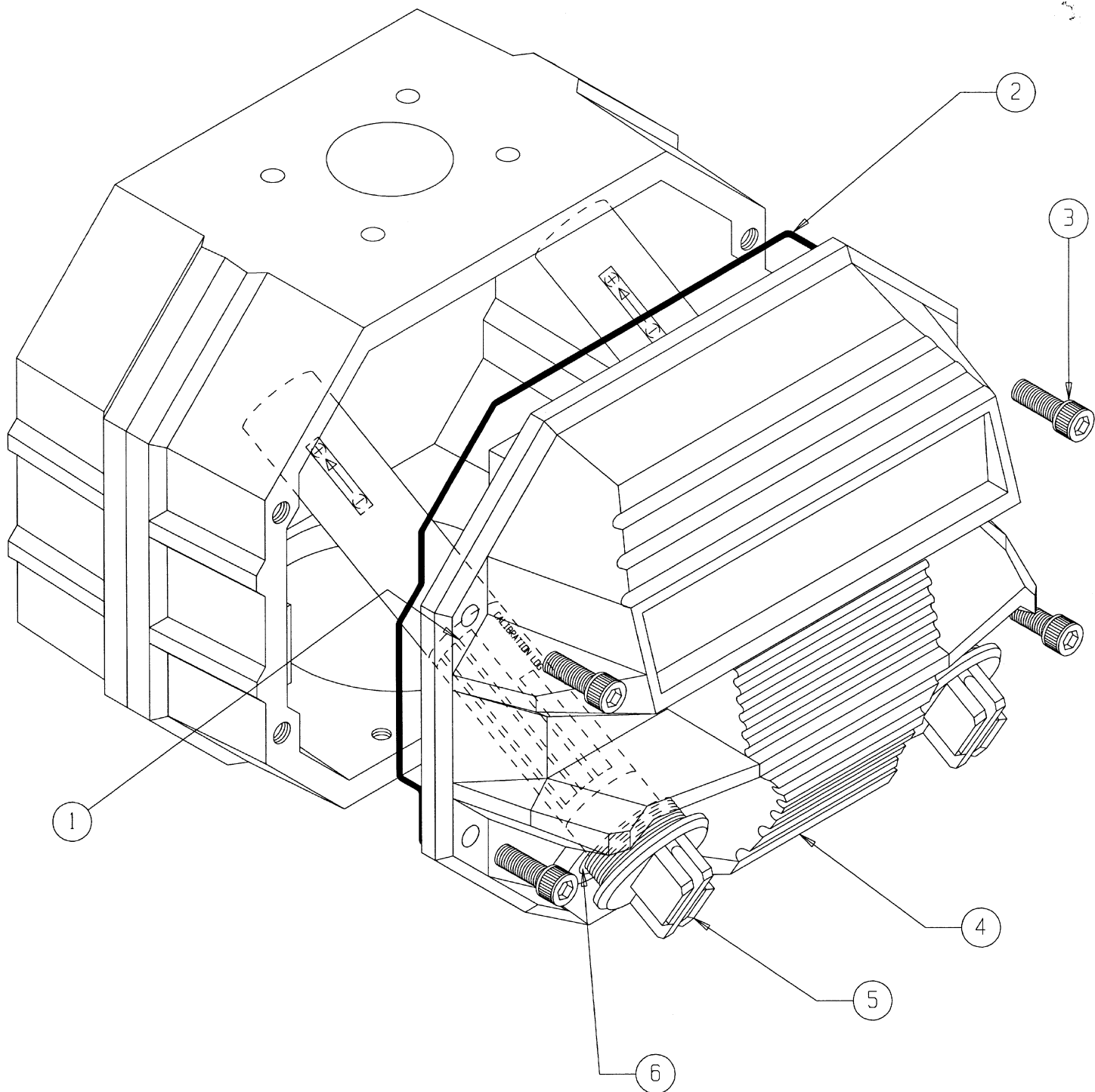
Replacement Parts Price List - Effective 7/03

Measurement Systems International

Item Number	Part Number	Description	List Price
1	500095-0100	Label	5.00
2	500156-0100	O-Ring	15.00
3	20810-0183	Screw, SH, 3/8-16 x 1, SS	1.00
4	500014-0200	Back casting	250.00
5	500027-0002	Tube assembly, battery	75.00
6	500118-0100	Battery tube guide	20.00

Complete Battery Casting Assembly

500155-0002	Battery casting assembly	375.00
-------------	--------------------------	--------



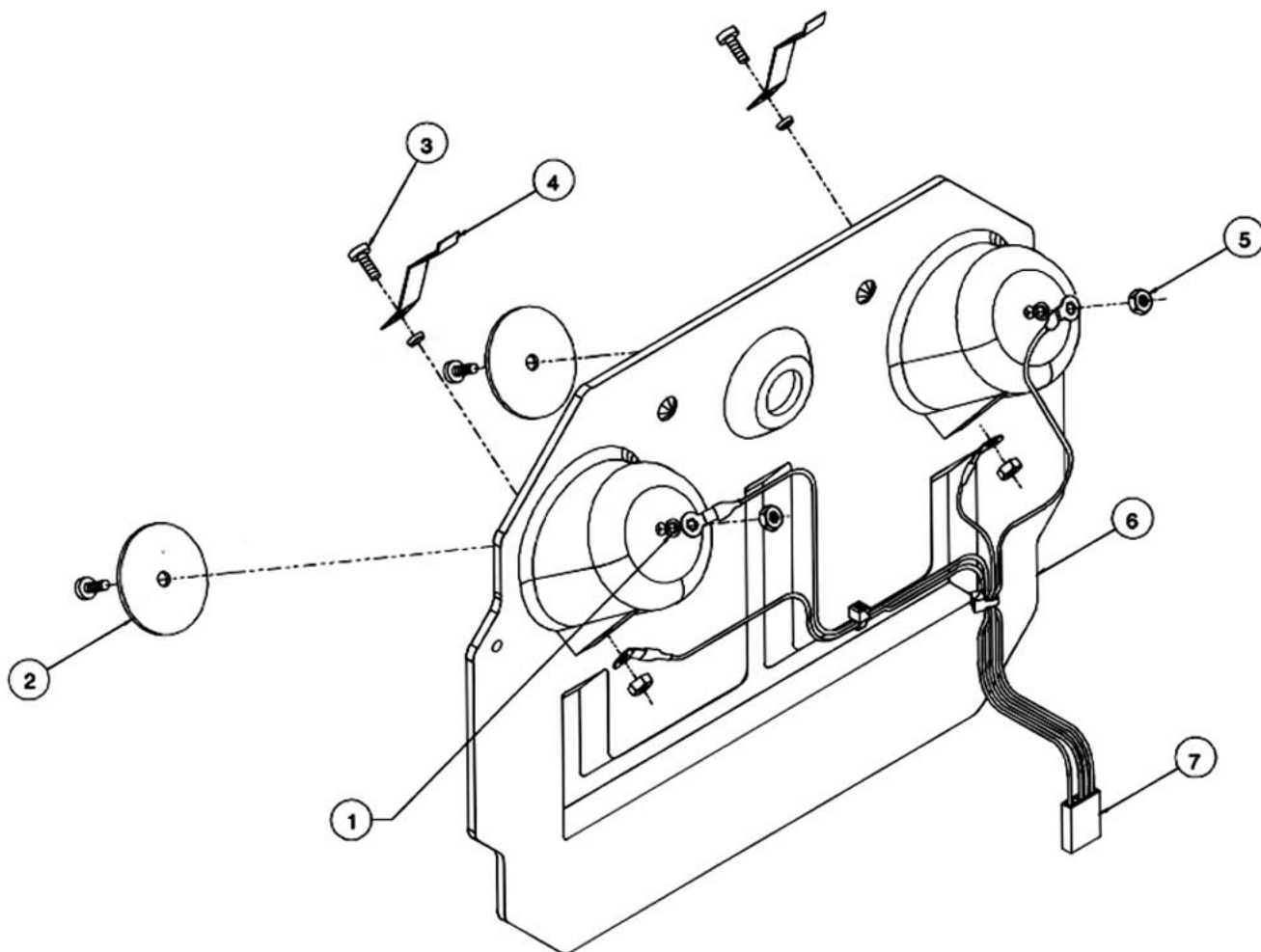
**MSI-4300 PORT-A-WEIGH PLUS
BATTERY CASTING ASSEMBLY**
Measurement Systems International
14240 Interurban Avenue South STE200
Seattle, Washington 98168-4661 U.S.A

MSI-4300 Porta-Weigh Plus Bulkhead Assembly

Replacement Parts Price List - Effective 7/03

Measurement Systems International

Item Number	Part Number	Description	List Price
1	10184	Collar, rolled, Nyltite, #6	1.00
2	10162	Washer, phenolic .188 ID x 1.40 OD	2.50
3	20965-0029	Screw, PH, 6-32 x 3/8, sltd, brass	.50
4	500030-0100	Clip, spring	10.00
5	21055-0004	Nut, hex, 6-32, brass	.50
6	500025-0100	Bulkhead	65.00
7	500113-0100	Cable assembly	35.00
	500055-0001	Bulkhead assembly	175.00



**MSI-4300 PORTA-WEIGH PLUS
BULKHEAD ASSEMBLY**

Measurement Systems International
14240 Interurban Avenue South STE 200
Seattle, Washington 98168-4661 U.S.A.

Shackle Dimensions

Replacement Parts Price List - Effective 7/03

Measurement Systems International

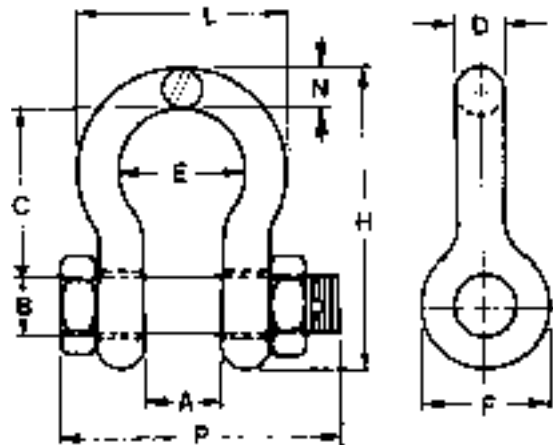
Part Number	W.L.L. Tons	Size	A	B	C	D	E	F	H	L	N	P	Weight (lbs)
10541	3 1/4	.63	1.06	.75	2.38	.63	1.69	1.56	4.22	2.94	.69	.63	1.58
10538	6 1/2	.88	1.44	1.00	3.31	.88	2.28	2.13	5.75	4.03	.97	5.00	3.95
10539	17	1.50	2.38	1.63	5.75	1.50	3.88	3.63	9.88	6.88	1.62	8.25	19.50
10540	25	1.75	2.88	2.00	7.00	1.75	5.00	4.32	11.88	8.50	2.12	9.59	31.30
23650-0030	30	1.50	2.38	1.63	5.75	1.50	3.88	3.63	9.88	6.88	1.62	8.25	20.80
23650-0040	40	1.75	2.88	2.00	7.00	1.75	5.00	4.32	11.88	8.50	2.12	9.59	33.91
23650-0050	55	2.00	3.25	2.25	7.75	2.00	5.75	5.00	13.38	9.75	2.00	11.00	51.75
23650-0110	110	3.00	5.00	3.25	13.00	3.00	7.88	6.50	21.50	14.50	3.63	16.50	178.00
23650-0175	175	4.00	5.50	4.25	14.50	4.00	10.00	9.00	25.69	18.38	4.56	19.75	338.00

Oversized Shackles

501386-0100	40	1.75	2.88	2.00	10.00	1.75	6.00	4.32	15.00	9.50	1.75	9.00	45.00
501082-0100	40	2.25	2.88	2.00	13.50	2.25	8.00	4.32	17.85	12.50	2.25	10.00	90.00
501083-0100	50	2.00	3.25	2.25	12.25	2.00	8.00	5.00	17.00	12.00	2.00	11.00	72.00

Shims

30013-0112 (For use with 50K/70K ton shackles)





"We Weigh Quality First"



Measurement Systems International

14240 Interurban Avenue South STE 200
Seattle, Washington 98168-4661 U.S.A.
Phone: 206-433-0199 • Fax: 206-244-8470
Web: www.msiscales.com • Email: info@msiscales.com