
MSI-3650

Digital Indicator

Remote Readout

Confidential Replacement Parts Price List
Measurement Systems International
Authorized Distributor Use Only

Table of Contents

Replacement Parts Price List - Effective 7/03

Measurement Systems International

Page

Discount, Terms, Conditions and Warranty	3
MSI Exchange Parts	4
MSI-3650 Meter Assembly (AC Power Input)	5
MSI-3650 Meter Assembly (DC Power Input)	7
MSI-3650 Meter Assembly (Battery Powered)	9
MSI-3650/3750 Mounting Bracket Assembly	11

Discount, Terms, Conditions and Warranty

Replacement Parts Price List - Effective 7/03

Measurement Systems International

Distributor Discount

The standard distributor discount for MSI replacement parts is 25% and applies to all published prices effective July 2003. All orders are subject to final acceptance by MSI. Orders will be accepted from authorized MSI distributors only. A \$35 USD minimum per purchase order applies for all orders placed by authorized distributors with MSI. Prices listed are F.O.B. factory.

Terms and Conditions (Domestic Sales)

Each authorized distributor/dealer shall have submitted an original credit application signed and dated with an authorized officer/owner signature prior to receiving credit privileges with MSI. Credit applications will remain on file and periodically be updated.

New credit applications will be evaluated by the Credit Department and credit limits established based on the applicants credit history.

MSI's standard credit terms are Net 30 Days. A 1.5% interest penalty is applied on any outstanding balance over 60 days late. Accounts 30 days past due are automatically subject to prepayment or C.O.D. terms. Any work in process is put on credit hold until payment and any applicable penalty charges are received. Accounts 60 days past due will result in permanent prepayment or C.O.D. terms.

Domestic Shipments: Unless otherwise specified by dealer/distributor, all domestic shipments up to 150 pounds will be shipped prepaid via UPS and applicable charges will be added to the order invoice. MSI may prepay and add freight charges from other carriers when specified by dealer/distributor. Otherwise, shipments using carriers other than UPS may be shipped freight collect.

Returned equipment: Permission must be obtained from MSI before any equipment is returned and shipment must bear the Return Material Authorization (RMA) Number for identification. New equipment returned for credit should be received in resalable condition and is subject to a 15% service charge. MSI reserves the right to deduct for any sustained damage in transit. No deduction for returned equipment is accountable from a remittance until a credit memorandum has been issued by MSI.

Unless otherwise authorized by MSI, all returned equipment will only be accepted when freight has been prepaid.

Order cancellation: MSI will cancel orders for standard equipment at no service charge prior to shipment. A service charge of 15% plus transportation charges will be assessed to orders cancelled after shipment. A service charge for cancellation of custom equipment will be determined on an individual basis.

Exceptions to the above MSI credit policy require written authorization from a Corporate Director and/or Credit Department.

Terms and Conditions (Export Sales)

Export payment terms are by irrevocable Letter of Credit, prepayment or documentary collection depending upon the customer and the residing country. All payments are required in U.S. Dollars.

Export accounts that wish to seek credit terms must submit at least three credit references (preferably in U.S.A.) and a banking reference. Credit issuance will be determined by existing credit standing, level of business with MSI along with the political and economic conditions of the importing country.

Letter of Credit (L/C)

Orders must be covered by an irrevocable commercial Letter of Credit issued by a major bank, payable at sight, incorporating the following

terms and conditions:

Issued in favor of : Measurement Systems International, Inc.
14240 Interurban Avenue South STE 200
Seattle, Washington 98168-4661 U.S.A.

In an amount not to exceed (amount of L/C) U.S. Dollars, FOB Plant, Seattle, Washington.

Advised through: Bank of America
International Trade Operations
800 Fifth Avenue, Floor 31
Seattle, Washington, 98104 USA
SWIFT: BOFAUS6SSEA

Bank of America must be designated as the negotiating bank and must be authorized to reimburse itself for drawings by:

- Debiting the opening bank's account with Bank of America, San Francisco, California.
- Claiming telegraphically on a United States bank.

The L/C is to be payable against the presentation of the following documents:

- Draft drawn on Bank of America "at sight".
- Commercial Invoice.
- Packing List.
- Airway Bill evidencing shipment of the merchandise from Seattle to destination.
- Import permit number, if applicable, noted on the L/C.
- Insurance to be effected by buyer.
- Transshipment and partial shipments allowed. Documents to be presented a minimum of 10 days from Airway Bill date.
- All banking charges other than those of Bank of America are for the buyers account.

The Letter of Credit must be acceptable to MSI before our obligation to the order is considered final.

Payment with Visa/MasterCard is also accepted.

Export Administrative Fees

(Apply with L/C and Documentary Collection term of \$325 USD)



Freight Forwarder

Orders will be shipped whenever possible by a customer specified freight forwarder. When one is not specified, MSI will attempt to ship by the least expensive freight forwarder. By following the above procedures, orders will be processed faster and at less expense. If any other method of shipping and payment is used, the cost of additional export documentation, insurance, freight, etc. will be added to the net selling prices.

Limited Warranty

Warranty Terms are detailed in each operating manual. In general, there is a one year warranty against factory defects on all MSI equipment. Batteries and cables are warranted for 90 days. Warranty repair is to be conducted at the plant unless specifically authorized in writing by MSI. When authorized warranty repair is conducted by the Distributor, the rates paid by MSI are \$35.00 per hour for labor.

MSI Exchange Parts

Replacement Parts/Price List - Effective 7/03
Measurement Systems International

The following are prices for exchange parts. The parts returned to MSI must be identical to those shipped for exchange. If the parts returned are not identical, not repairable, or are not returned within 30 days, the dealer will be invoiced for the full

amount of replacement cost. Serial number of the scale and purchase order are required when exchange parts are ordered. Prices listed do not include shipping charges.

Product	Price	Product	Price
MSI 600 Check Weigh		MSI 6260 Trans Weigh	
Computer PCB	\$425.00	Indicator Controller PCB	\$500.00
Display PCB	\$425.00	Transmitter/Receiver Set Tuned	\$450.00
Load Cell	\$500.00	Load Cell (2K to 30K only)	\$600.00
		Adapter PCB	\$150.00
MSI 6000 Check Weigh		Crane Controller PCB	\$375.00
Main/Display PCB	\$425.00		
Load Cell	\$500.00	MSI 3700 Magnum Plus	
Option PCB	\$253.00	3600 Load Cell	\$500.00
		3700 Load Cell	\$500.00
MSI 7200 Dyna Link		Retrofit Kit	\$600.00
All PCB (except Amp PCB)	\$325.00		
Amp PCB	\$135.00	MSI 3650/3750 Digital Indicator	
Load Cell (1K to 10K only)	\$600.00	Main/Display PCB	\$425.00
Transmitter/Receiver PCB set	\$350.00	DC/DC PCB	\$130.00
RF Handheld	\$500.00	Option PCB	\$160.00
		Indicator Assy	\$695.00
MSI 3260 Challenger			
Load Cell (all capacities)	\$600.00	MSI 3550 Digital Indicator	
		Computer PCB	\$325.00
MSI 3360 Challenger II		Display PCB	\$270.00
Computer PCB	\$325.00	Interface PCB	\$105.00
Display PCB	\$270.00	Indicator Assy	\$530.00
Load Cell (all capacities)	\$500.00		
IR Remote	\$95.00	MSI CellScale	
		Modem	\$600.00
MSI 4260 Port A Weigh			
Computer/Display PCB	\$750.00	3750CS Front Panel Assy	\$575.00
Remote Receiver PCB	\$150.00		
Load Cell (2K to 30K only)	\$600.00	6260CS Front Casting Assy	\$750.00
Front Casting Assy	\$600.00		
		9260 Front Plate Assy	\$1,195.00
MSI 4300 Port A Weigh Plus			
Main/Display Assy	\$600.00	9300 Front Casting Assy	\$1,145.00
Load Cell (500# to 30K only)	\$600.00		
Battery Tube Assy	\$42.00		
Front Casting Assy (9300 No Modem)	\$950.00		

MSI warrants all exchange parts against defects in workmanship and materials for a period of 90 days from date of purchase. Pending stock status, exchange parts can be ordered and shipped the same day, if ordered prior to 12:00 PM, Pacific Time.

Technical specifications subject to change without notice.
Prices suggested list F.O.B. MSI plant, Seattle, WA are subject to change without notice.

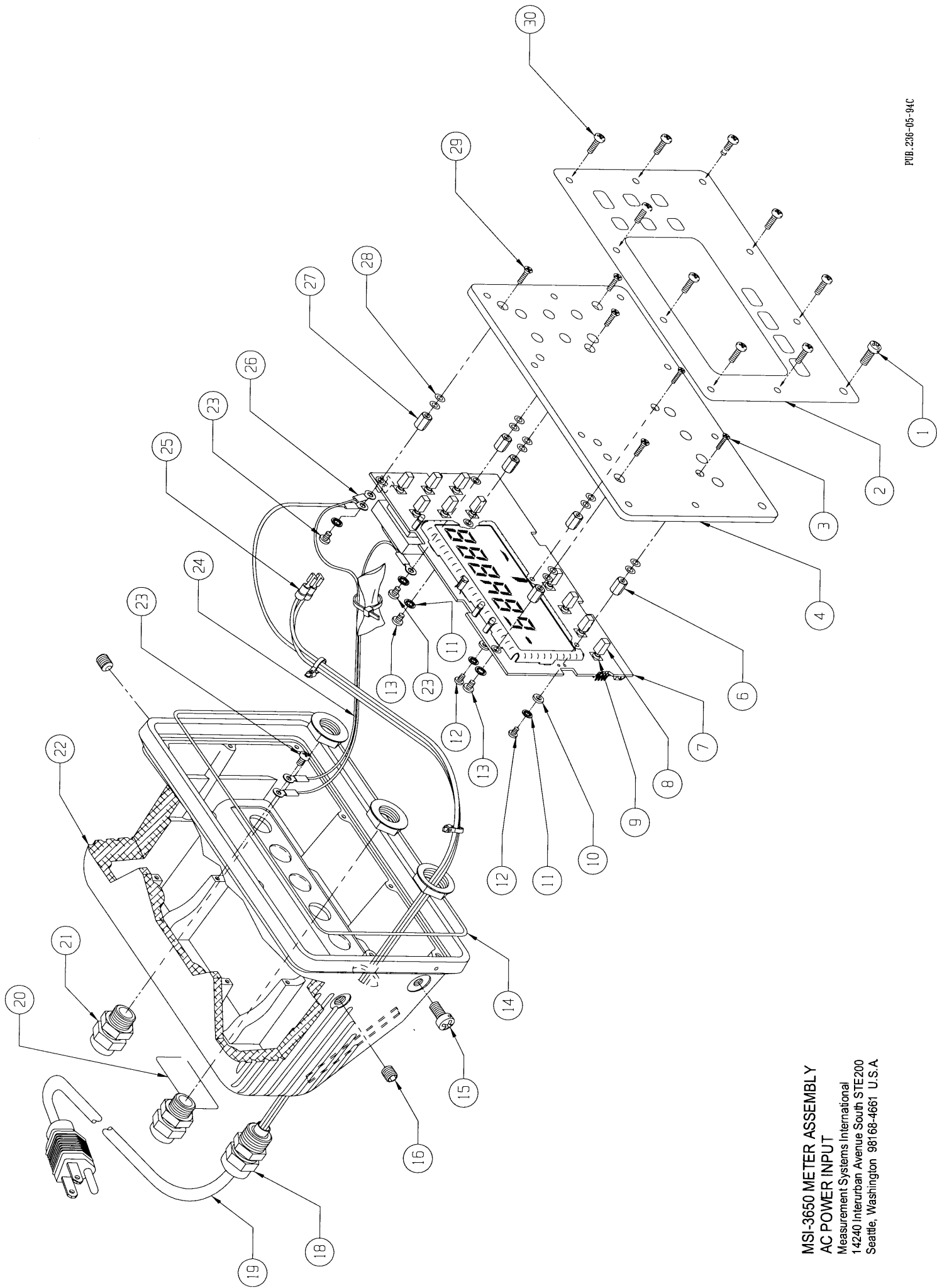
MSI-3650 Meter Assembly (AC Power Input)

Replacement Parts Price List - Effective 7/03

Measurement Systems International

Item Number	Part Number	Description	List Price
1	10520	Screw, seal, PH, 10-24 X 15/32, SS	15.00
2	501464-0100	Label, descriptive	40.00
3	10516	Screw, FH, locking patch, 4-40 X 3/8, Phil, SS	1.00
4	501459-0100	Front panel	75.00
6	10517	Standoff, hex, 4-40 X 3/8, alum.	1.00
7	501076-xxxx	PCB, computer/display (MSI-3650 only)	950.00
8	10309	Cap, switch	1.00
9	10271	Switch	4.00
10	21615-0002	Washer, flat, .120 X .280, nylon	.50
11	20701-0003	Washer, internal tooth, #4, SS	.50
12	10780	Screw, FH, locking patch, 4-40 X 5/16, Phil, SS	1.00
13	10761	Screw, FH, locking patch, 6-32 X 3/16, Phil, SS	1.00
14	500447-0001	O-Ring	14.00
15	10519	Screw, seal, FH, 1/4-20 X 15/32, Phil, SS	12.00
16	10524	Screw, set, 5/16-18 X 1/4, allen, SS	1.00
18	10515	Connector, feed-thru	5.00
19	39800-0003	Cable, power	15.00
20	500712-0100	Label, warning	5.00
21	10119	Connector, feed-thru	3.50
22	500325-0300	Enclosure	350.00
23	10762	Screw, FH, locking patch, 6-32 X 5/16, Phil, SS	1.00
24	30612-0304	Wire, 18 AWG, green	.50/in
25	38061-0182	Terminal, quick disconnect, female, 22-18 AWG	1.00
26	38001-0006	Ring, terminal, #6, 22-18 AWG	1.00
27	10296	Standoff, hex, 6-32 X 3/8, alum	1.00
28	10441	Washer, flat, #6, SS	1.00
29	10306	Screw, FH, locking patch, 6-32 X 3/8, Phil, SS	1.00
30	10521	Screw, seal, PH, 8-32 X 1/2, Phil, SS, black oxide	2.00
not shown	500656-0001	PCB, Power supply, DC to DC	150.00
not shown	500656-0002	PCB, Power supply, Dc to DC, Isolated	200.00

xxxx Due to the large number of possible configurations of this assembly, please contact factory for assistance.



MSI-3650 METER ASSEMBLY
 AC POWER INPUT
 Measurement Systems International
 14240 Interurban Avenue South STE200
 Seattle, Washington 98168-4661 U.S.A

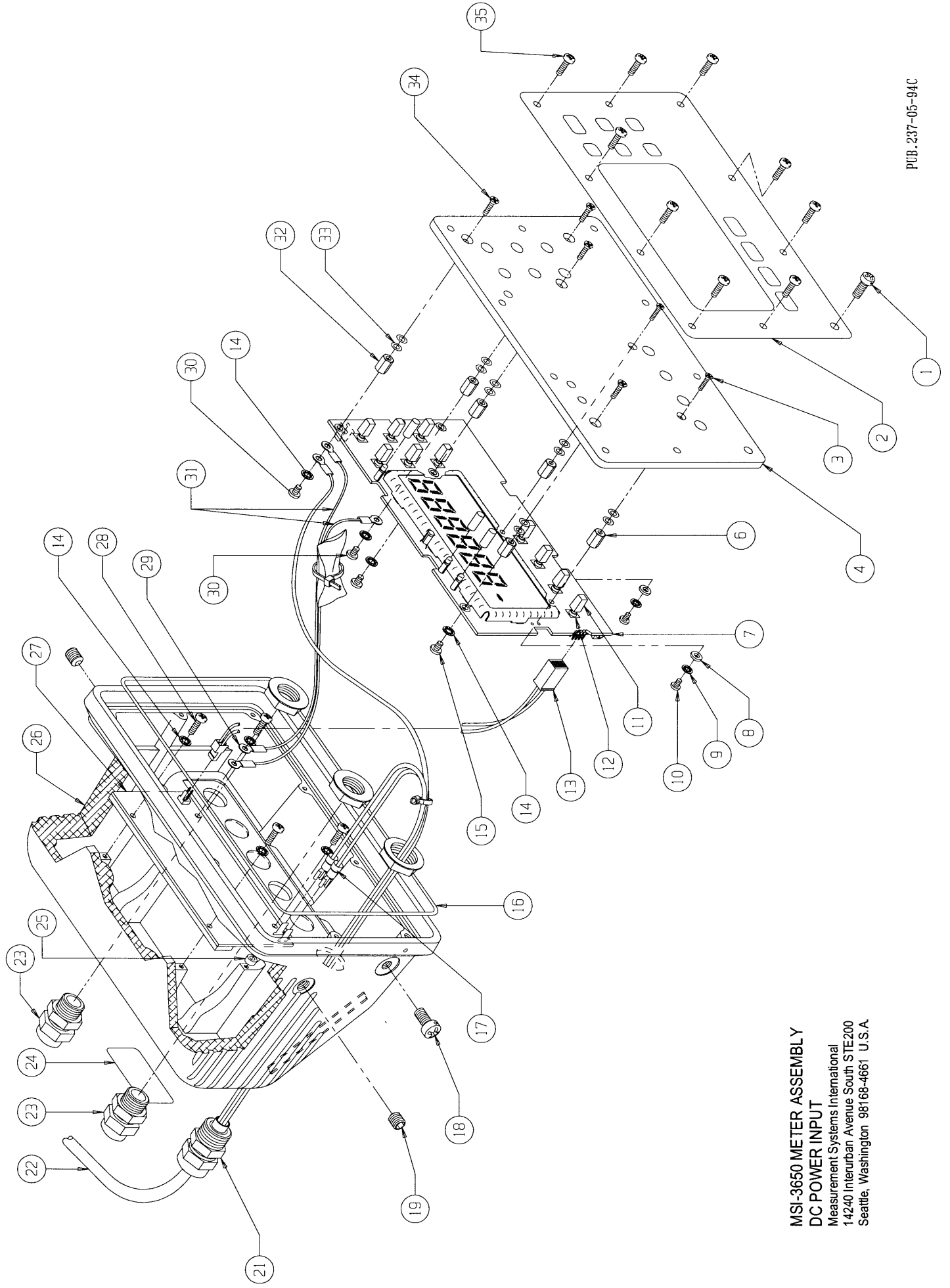
MSI-3650 Meter Assembly (DC Power Input)

Replacement Parts Price List - Effective 7/03

Measurement Systems International

Item Number	Part Number	Description	List Price
1	10520	Screw, seal, PH, 10-24 X 15/32, SS	15.00
2	501464-0100	Label, descriptive	40.00
3	10516	Screw, FH, locking patch, 4-40 X 3/8, Phil, SS	1.00
4	501459-0100	Panel, front	75.00
6	10517	Standoff, hex, 4-40 X 3/8, alum.	1.00
7	501076-xxxx	PCB, computer/display	950.00
8	21615-0002	Washer, flat, .120 X .280, nylon	.50
9	20701-0003	Washer, internal tooth, #4, SS	.50
10	10780	Screw, FH, locking patch, 4-40 X 5/16, Phil, SS	1.00
11	10309	Cap, switch	1.00
12	10271	Switch	4.00
13	500751-0001	Cable assembly, DC/DC power	30.00
14	20701-0004	Washer, internal tooth, #6, SS	.50
15	10761	Screw, FH, locking patch, 6-32 X 3/16, Phil, SS	1.00
16	500447-0001	O-Ring	14.50
17	38061-0182	Terminal, quick disconnect, female, 22-18 AWG	1.00
18	10519	Screw, seal, FH, 1/4-20 X 15/32, Phil, SS	12.00
19	10524	Screw, set, 5/16-18 X 1/4, allen, SS	1.00
21	10515	Connector, feed-thru	5.00
22	10647	Cord power, DC	6.00
23	10119	Connector, feed-thru	3.50
24	500712-0200	Label, warning	10.00
25	21631-0001	Spacer, #6 X 1/8	1.00
26	500325-0300	Enclosure	350.00
27	500656-0001	PCB, Power supply, DC to DC	145.00
28	30028-0230	Screw, PH, 6-32 X 1/2, Phil, SS	.50
29	38001-0006	Ring, terminal, #6, 22-18 AWG	1.00
30	10762	Screw, FH, locking patch, 6-32 X 5/16, Phil, SS	1.00
31	30612-0304	Wire, 18 AWG, green	.50/in
32	10296	Standoff, hex, 6-32 X 3/8, alum	1.00
33	10441	Washer, flat, #6, SS	1.00
34	10306	Screw, FH, locking patch, 6-32 X 3/8, Phil, SS	1.00
35	10521	Screw, seal, PH, 8-32 X 1/2, Phil, SS, black oxide	2.00

xxxx Due to the large number of possible configurations of this assembly, please contact factory for assistance.



MSI-3650 METER ASSEMBLY
 DC POWER INPUT
 Measurement Systems International
 14240 Interurban Avenue South STE200
 Seattle, Washington 98168-4661 U.S.A.

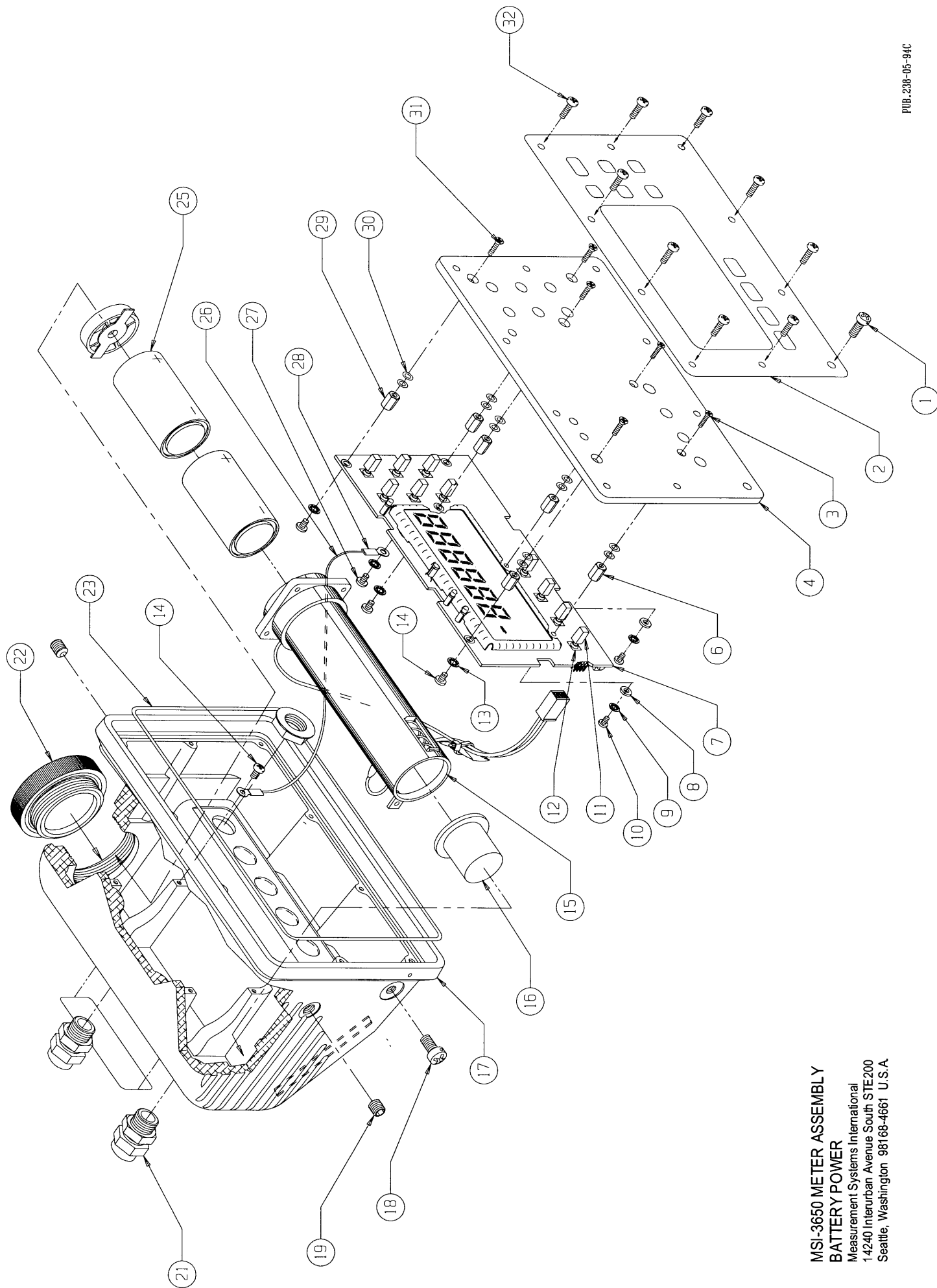
MSI-3650 Meter Assembly (Battery Powered)

Replacement Parts Price List - Effective 7/03

Measurement Systems International

Item Number	Part Number	Description	List Price
1	10520	Screw, seal, PH, 10-24 X 15/32, SS	15.00
2	501464-0100	Label, descriptive	40.00
3	10516	Screw, FH, locking patch, 4-40 X 3/8, Phil, SS	1.00
4	501459-0100	Panel, front	75.00
5	500435-0100	Shield, EMI	3.00
6	10517	Standoff, hex, 4-40 X 3/8, alum.	1.00
7	501076-xxxx	PCB, computer/display (MSI-3650 only)	950.00
8	21615-0002	Washer, flat, .120 X .280, nylon	.50
9	20701-0003	Washer, internal tooth, #4, SS	.50
10	10780	Screw, FH, locking patch, 4-40 X 5/16, Phil, SS	1.00
11	10309	Cap, switch	1.00
12	10271	Switch	4.00
13	20701-0004	Washer, internal tooth, #6, SS	.50
14	10761	Screw, FH, locking patch, 6-32 X 3/16, Phil, SS	1.00
15	500445-0002	Battery tube assembly	70.00
16	500579-0100	Rod, support	15.00
17	500325-0100	Enclosure	350.00
18	10519	Screw, seal, FH, 1/4-20 X 15/32, Phil, SS	12.00
19	10524	Screw, set, 5/16-18 X 1/4, allen, SS	1.00
21	10119	Connector, feed-thru	3.50
22	500364-0001	Cap, battery access	65.00
23	500447-0001	O-Ring	14.50
25	10041	Battery, alkaline, D cell	3.00
26	30612-0304	Wire, 18 AWG, green	.50/in
27	30028-0226	Screw, PH, 6-32 X 1/4, Phil, SS	1.00
28	38001-0006	Ring, terminal, #6, 22-18 AWG	1.00
29	10296	Standoff, hex, 6-32 X 3/8, alum	1.00
30	10441	Washer, flat, #6, SS	1.00
31	10306	Screw, FH, locking patch, 6-32 X 3/8, Phil, SS	1.00
32	10521	Screw, seal, PH, 8-32 X 1/2, Phil, SS, black oxide	2.00

xxxx Due to the large number of possible configurations of this assembly, please contact factory for assistance.



MSI-3650 METER ASSEMBLY
BATTERY POWER
 Measurement Systems International
 14240 Interurban Avenue South STE200
 Seattle, Washington 98168-4661 U.S.A.

MSI-3650/3750/3750CS Mounting Bracket Assembly

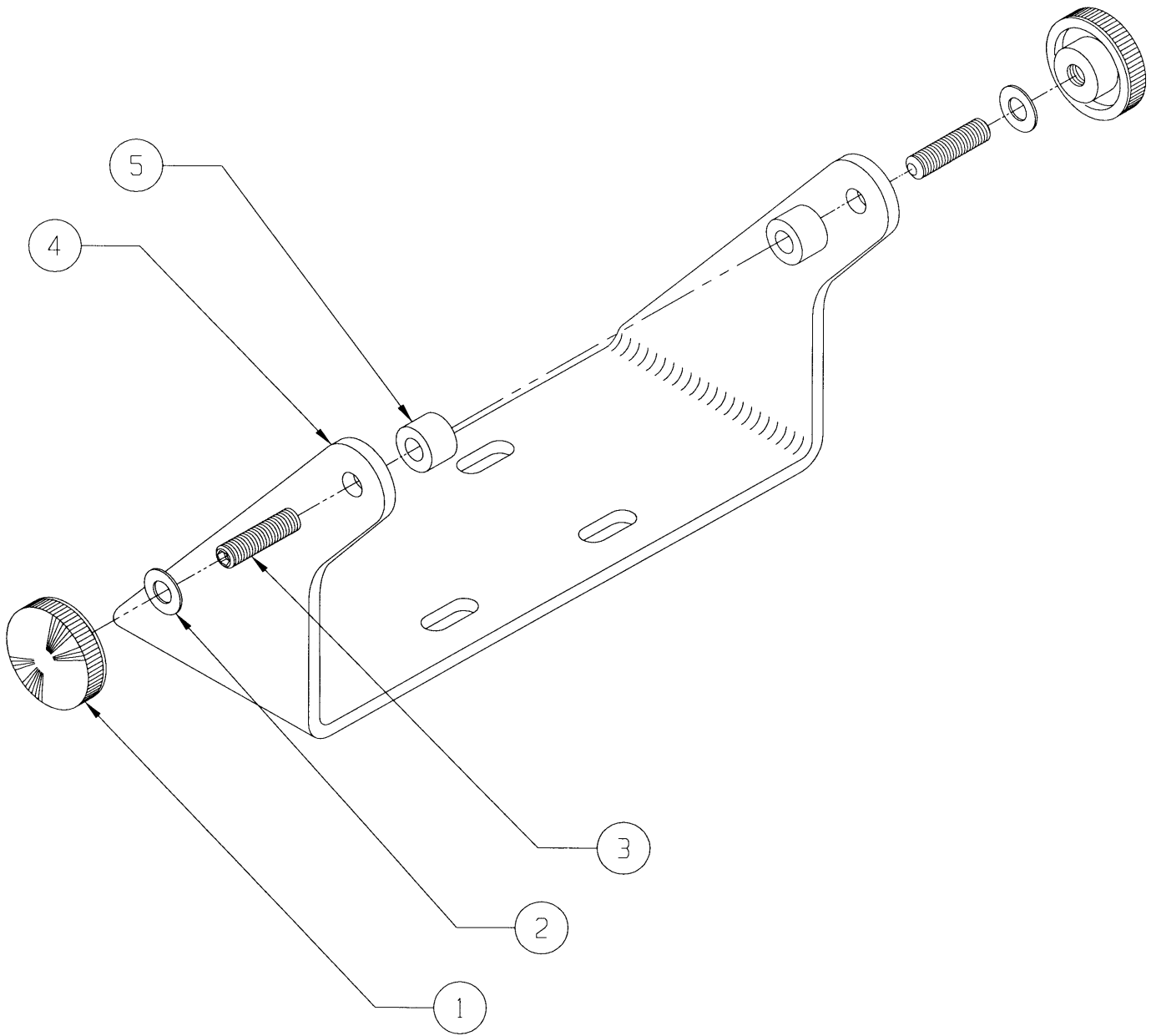
Replacement Parts Price List - Effective 7/03

Measurement Systems International

Item Number	Part Number	Description	List Price
1	10572	Knob	10.00
2	21615-0001	Washer, flat, .315, nylon	1.00
3	10582	Screw, set, 5/16 -18 X 1-1/8, SS	1.00
4	500572-0100	Bracket, mounting	75.00
5	21630-0132	Spacer, 5/8 X 7/16, black anodize, alum.	5.00
	500665-0001	Mounting bracket assembly	95.00

Technical specifications subject to change without notice.

Prices suggested list F.O.B. MSI plant, Seattle, WA are subject to change without notice.



PUB.239-05-94C

**MSI-3650 METER
MOUNTING BRACKET ASSEMBLY**
Measurement Systems International
14240 Interurban Avenue South STE200
Seattle, Washington 98168-4661 U.S.A.



"We Weigh Quality First"



Measurement Systems International

14240 Interurban Avenue South STE 200
Seattle, Washington 98168-4661 U.S.A.
Phone: 206-433-0199 • Fax: 206-244-8470
Web: www.msiscales.com • Email: info@msiscales.com