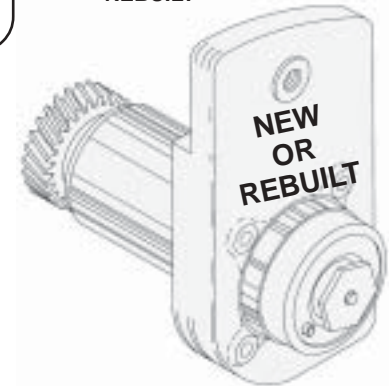


**HS70R REBUILT KNIFE
SHAFT ASSEMBLIES:
IF YOU SEND US YOUR SERVICEABLE
HOUSING WE WILL REBUILD AND
SHIP IT THE NEXT DAY**

HS33A
Knife Shaft Hub Assy
NEW

HS70R
Knife Shaft Hub Assy
REBUILT



HS02-29
Knife
Shaft Nut

HS08-02
Knife Shaft
Worm Gear

HS04-LMB
Lower Main
Bearing

HS03-9
Worm Gear
Washer

HS07-01
Worm Gear
Thrust Washer

HS66
Steel Insert

HS05-UMB
Upper Main Bearing

HS06-48
Woodruff Key

HS11-06
Motor Gear
5 Tooth

HS09-26
Knife Shaft Hub

HS01-35
Knife Shaft

HS10-5A
Knife Shaft
Ring

HS12A-06
Motor Gear
Hardware Set

HS60
Knife Shaft

HS13A-55
Knife Screw &
Plug Assy

HS95
Plug

NEW
HS140
Poly "V" Belt

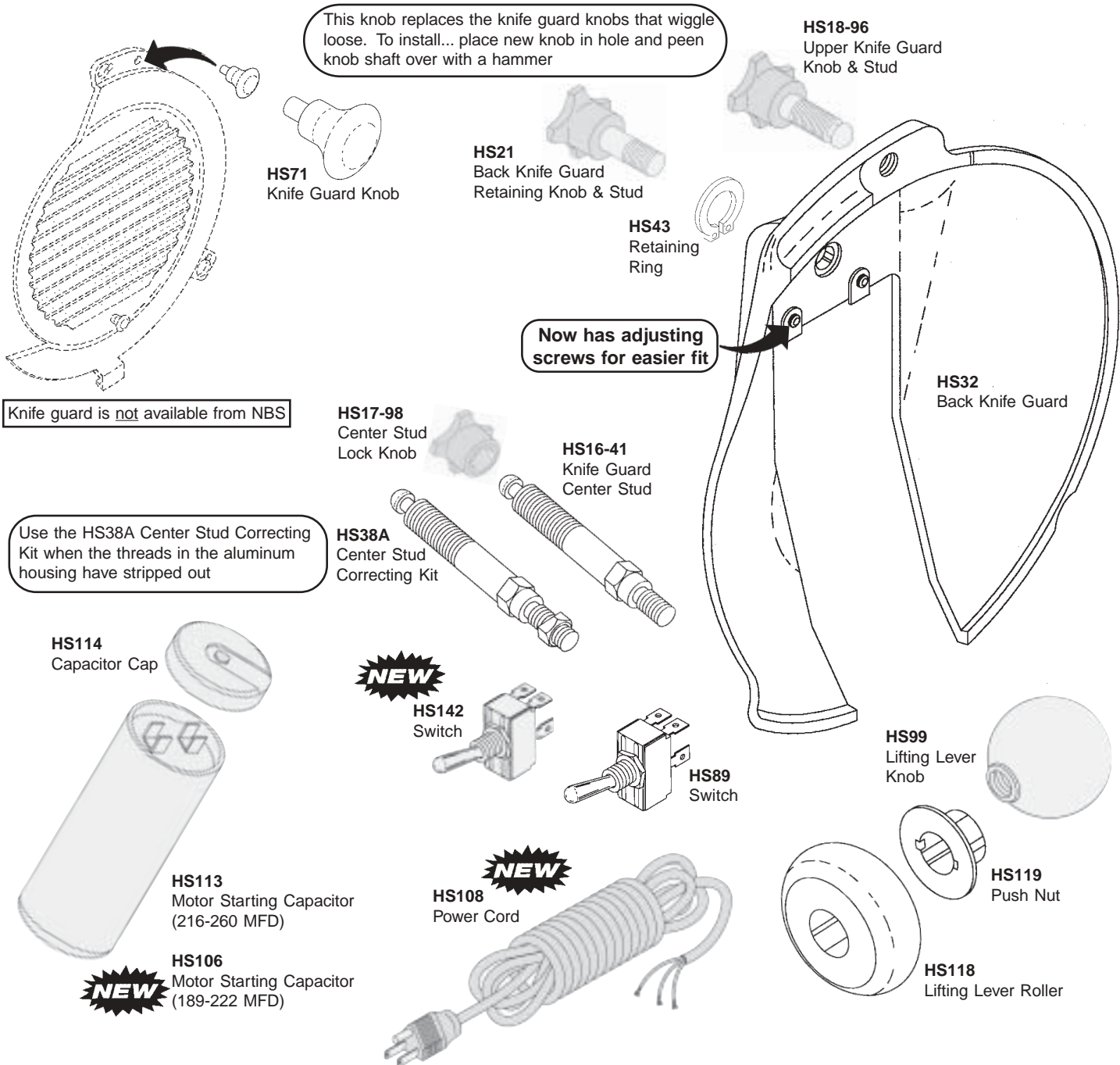
NEW
HS141
Bearing

HS65
Knife Shaft Hub &
Bushing Sub-Assy

FITS MODELS

NBS P/N	OEM P/N	DESCRIPTION	512	1612	1612E	1712	1712E	2612	2712	2812	2912
HS01-35	P-70435	Knife Shaft		X		X					
HS02-29	NS-32-29	Knife Shaft Nut		X		X					
HS03-9	WS-8-9	Worm Gear Washer		X		X					
HS04-LMB	BB-18-43	Lower Main Bearing		X		X					
HS05-UMB	BB-16-22	Upper Main Bearing		X		X					
HS06-48	M-73348	Woodruff Key		X		X					
HS07-01	V-104001	Worm Gear Thrust Washer		X		X					
HS08-02	M-70302	Knife Shaft Worm Gear		X		X					
HS09-26	P-88726	Knife Shaft Hub		X		X					
HS10-5A	B-111154	Knife Shaft Ring	X	X		X					
HS11-06	C-291221	Motor Gear 5 Tooth		X		X					
HS12A-06	N/A	Motor Gear Hardware Set		X	X	X	X				
HS13A-55	M-73355	Knife Screw & Plug Assy		X	X	X	X	X	X	X	X
HS33A	P-70348	Knife Shaft Hub Assy NEW		X		X					
HS60	B-114141	Knife Shaft	X								
HS65	B-120144	Knife Shaft Hub & Bushing Sub-Assy	X								
HS66	70314-1	Steel Insert		X		X					
HS70R	N/A	Knife Shaft Hub Assy - REBUILT		X		X					
HS95	72265	Plug		X	X	X	X	X	X	X	X
HS140	438845	Poly "V" Belt						X	X	X	X
HS141	BB-15-8	Bearing			X		X	X	X	X	X

The above described parts are supplied by **National Band Saw Company** as replacement parts for **Hobart** equipment.



FITS MODELS

NBS P/N	OEM P/N	DESCRIPTION	1612	1712	1812	1912	2612	2712	2812	2912
HS16-41	M-70241	Knife Guard Center Stud	X	X						
HS17-98	P-70198	Center Stud Lock Knob	X	X						
HS18-96	P-70196	Upper Knife Guard Knob & Stud	X	X						
HS21	P-118484	Back Knife Guard Retaining Knob & Stud	X	X						
HS32	S-82952-2	Back Knife Guard	X	X						
HS38A	N/A	Center Stud Correcting Kit	X	X						
HS43	RR-10-18	Retaining Ring	X	X						
HS71	70767	Knife Guard Knob	X	X						
HS89	87711-148-1	Switch	X	X			X	X		
HS99	106503	Lifting Lever Knob	X	X	X	X				
HS106	70487-00021	Motor Starting Capacitor (189-222 MFD)					X	X		
HS108	117542-37	Power Cord	X	X	X	X				
HS113	70487-15	Motor Starting Capacitor (216-260 MFD)	X	X	X	X				
HS114	N/A	Capacitor Cap	X	X	X	X				
HS118	108001	Lifting Lever Roller	X	X	X	X		X		X
HS119	106502	Push Nut	X	X	X	X		X		X
HS142	120388/ 87711-143-1	Switch			X	X			X	X

The above described parts are supplied by **National Band Saw Company** as replacement parts for **Hobart** equipment.

HS136
Screw

HS135
Top Cover
Locking Knob

HS137
Top Cover Spring

HS134
Locking Stud

HS138
Top Cover Locking
Hardware Kit

HS29
Index Worm Washer

HS107A
Index Stud Assy

HS117
Gauge Plate Unit
Cast Aluminum

HS37A-40
Gauge Plate
Support Assy

HS53A
Indexing Plate &
Spring Assy
(Includes **HS56** &
HS57 Rollers)

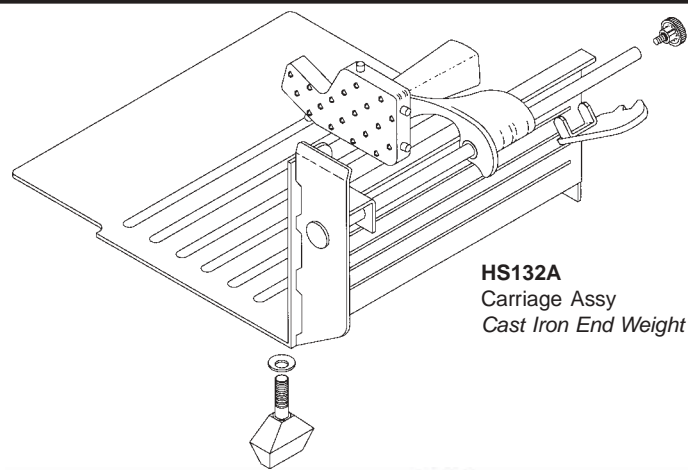
HS56
Indexing Plate Roller
(Straight)

HS57
Indexing Plate Roller

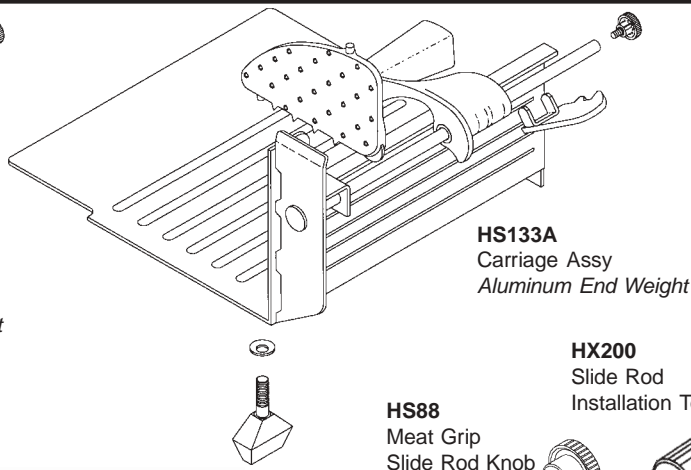
FITS MODELS

NBS P/N	OEM P/N	DESCRIPTION	512	1612	1712	1812	1912	2612	2712	2812	2912
HS29	88298	Index Worm Washer		X	X	X	X				
HS37A-40	P-88740-2	Gauge Plate Support Assy		X	X	X	X				
HS53A	70425	Indexing Plate & Spring Assy		X	X	X	X				
HS56	70343	Indexing Plate Roller (Straight)	X	X	X	X	X				
HS57	70342	Indexing Plate Roller		X	X	X	X				
HS107A	NS-32-12	Index Stud Assy		X	X	X	X				
HS117	124768	Gauge Plate Unit		X	X	X	X				
HS134	437880	Locking Stud						X	X	X	X
HS135	437879	Top Cover Locking Knob						X	X	X	X
HS136	SC-122-53	Screw						X	X	X	X
HS137	474698	Top Cover Spring						X	X	X	X
HS138	N/A	Top Cover Locking Hardware Kit						X	X	X	X

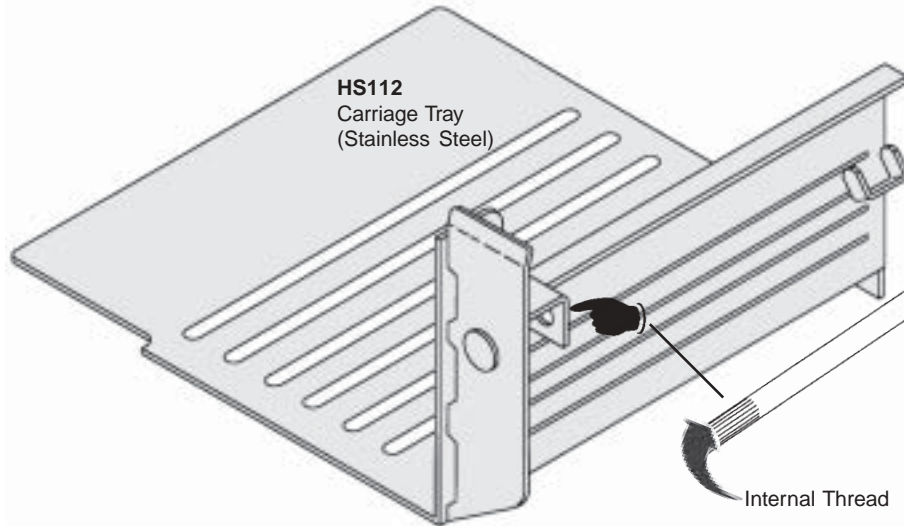
The above described parts are supplied by **National Band Saw Company** as replacement parts for **Hobart** equipment.



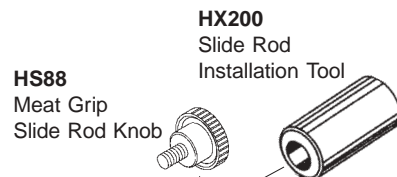
HS132A
Carriage Assy
Cast Iron End Weight



HS133A
Carriage Assy
Aluminum End Weight

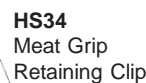


HS112
Carriage Tray
(Stainless Steel)



HS88
Meat Grip
Slide Rod Knob

HX200
Slide Rod
Installation Tool



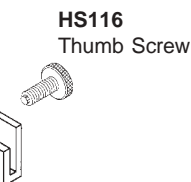
HS34
Meat Grip
Retaining Clip



HS90
Meat Grip Stop Kit



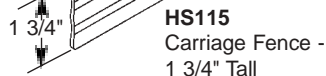
HS91
Meat Grip Slide Rod



HS116
Thumb Screw

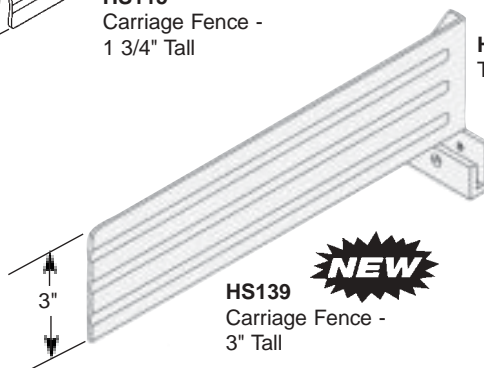
FOR STAINLESS STEEL CARRIAGE (NEW STYLE)
Unscrew old Slide Rod and replace with HS91 Slide Rod.

FOR CAST ALUMINUM CARRIAGE
Press or hammer out old Slide Rod. Press or hammer in new HS91 Slide Rod with Installation Tool HX200 to prevent peening of end of Slide Rod.



HS115
Carriage Fence -
1 3/4" Tall

**FITS
STAINLESS STEEL
CARRIAGES**

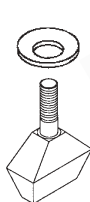


HS139
Carriage Fence -
3" Tall

HS116
Thumb Screw

HS15-64
Carriage
Mount Washer

HS14-5
Carriage
Thumb Screw



HS97
Carriage
Tray Handle



FITS MODELS

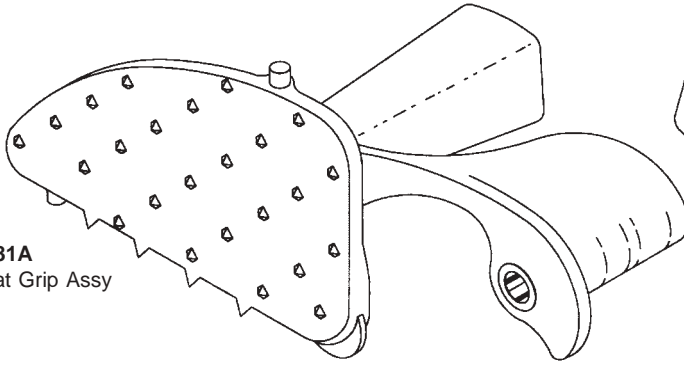
NBS P/N	OEM P/N	DESCRIPTION	512	1612	1712	1812	1912	2612	2712	2812	2912
HS14-5	C-108197-5	Carriage Thumb Screw	X	X	X	X	X				
HS15-64	A-107364	Carriage Mount Washer	X	X	X	X	X				
HS34	M-72579	Meat Grip Retaining Clip		X	X	X	X				
HS88	SC-16-5	Meat Grip Slide Rod Knob		X	X	X	X				
HS90	N/A	Meat Grip Stop Kit		X	X	X	X				
HS91	N/A	Meat Grip Slide Rod		X	X						
HS97	70194	Carriage Tray Handle		X	X	X	X				
HS112	437115-1	Carriage Tray		X	X	X	X				
HS115	295118	Carriage Fence - 1 3/4" Tall		X	X	X	X		X	X	X
HS116	290984	Thumb Screw		X	X	X	X	X	X	X	X
HS132A		Carriage Assy		X	X	X	X				
HS133A		Carriage Assy		X	X	X	X				
HS139	295117	Carriage Fence - 3" Tall		X	X	X	X	X	X	X	X
HX200	N/A	Slide Rod Installation Tool		X	X	X	X				

The above described parts are supplied by **National Band Saw Company** as replacement parts for **Hobart** equipment.

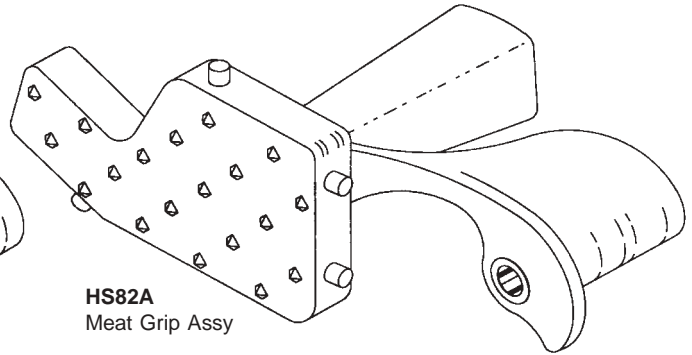
Aluminum

Cast Iron

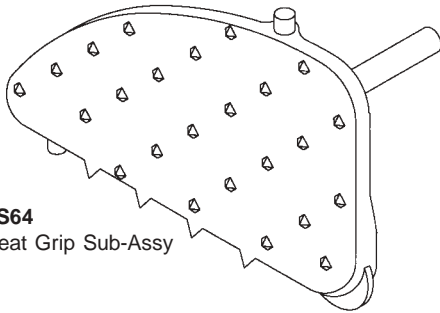
HS81A
Meat Grip Assy



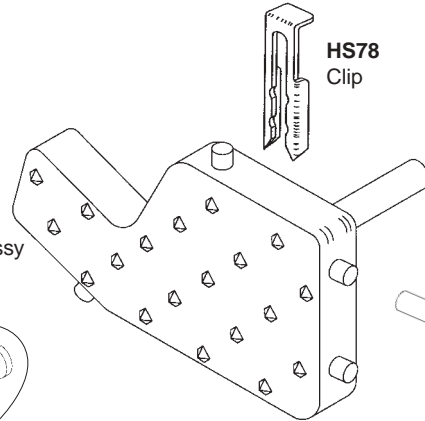
HS82A
Meat Grip Assy



HS64
Meat Grip Sub-Assy



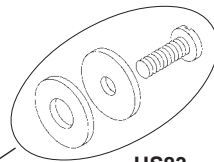
HS79
Meat Grip Sub-Assy



HS78
Clip

HS68
Plastic Button
(Stops end weight
from rubbing on
carriage)

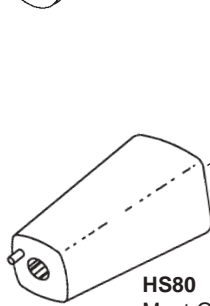
HS83
Screw & Washer Kit



HS42
Handle Washer



HS80
Meat Grip Handle



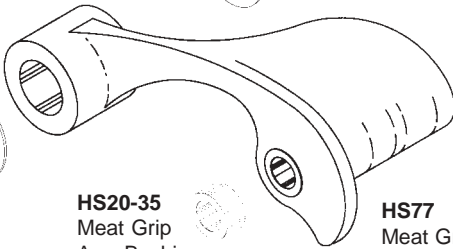
HS41
Meat Grip
Washer



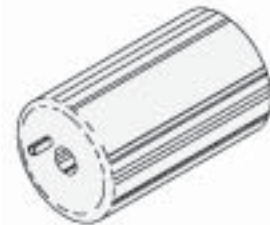
HS20-35
Meat Grip
Arm Bushing
(Bronze)



HS77
Meat Grip Arm



HS98
Meat Grip Handle (Heavy)



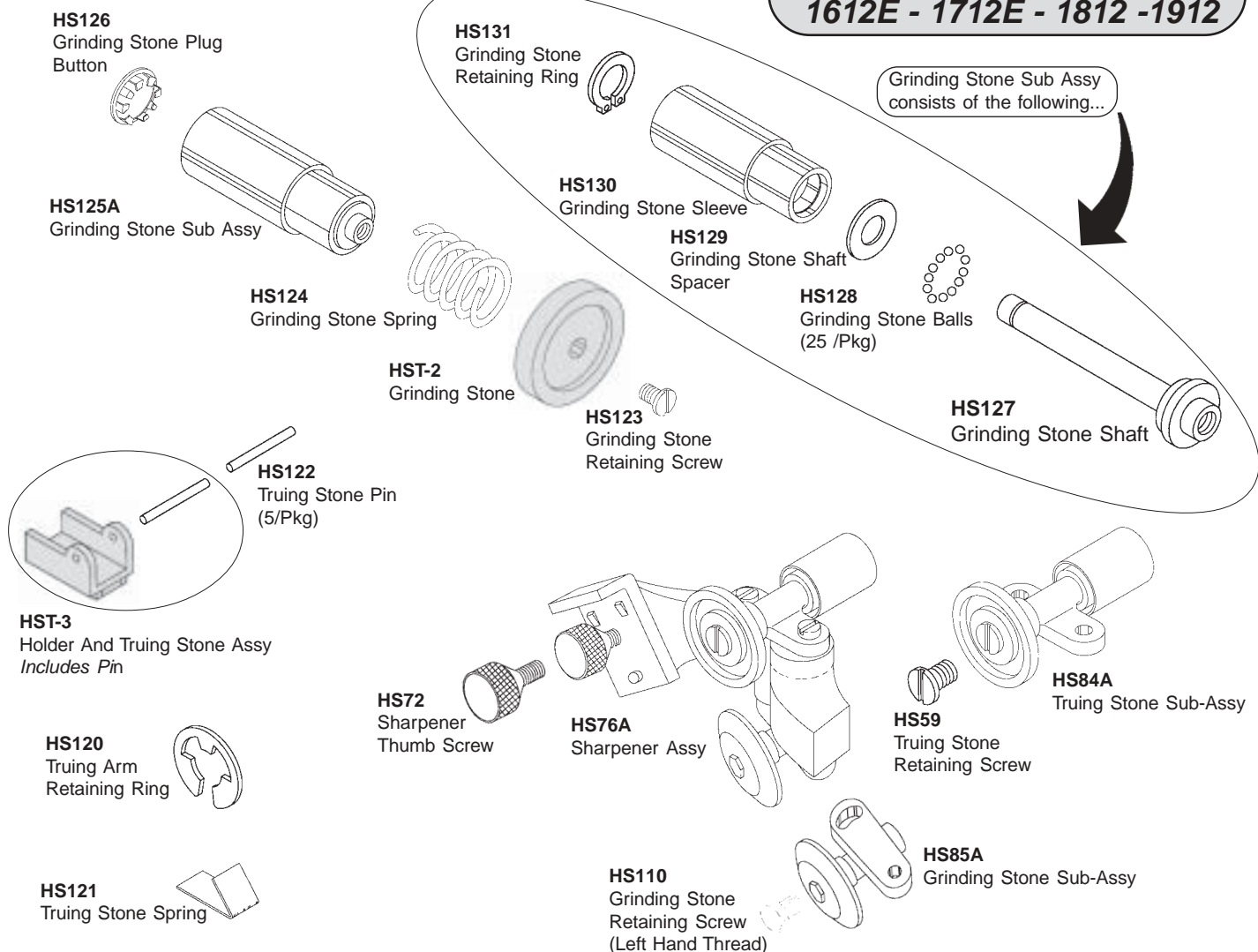
FITS MODELS

NBS P/N	OEM P/N	DESCRIPTION	1612	1712	1812	1912
HS20-35	M-75135	Meat Grip Arm Bushing (Bronze)	X	X	X	X
HS41	M-70386	Meat Grip Washer	X	X	X	X
HS42	M-70387	Meat Grip Handle Washer	X	X	X	X
HS64	R-77534	Meat Grip Sub-Assy	X	X	X	X
HS68	70360-1	Plastic Button	X	X	X	X
HS77	M-75138	Meat Grip Arm (With Bushings)	X	X	X	X
HS78	P-70341	Meat Grip Clip (Stainless Steel)	X	X	X	X
HS79	R-77534	Meat Grip Sub-Assy	X	X	X	X
HS80	70202	Meat Grip Handle	X	X	X	X
HS81A	N/A	Meat Grip Assembly (Aluminum)	X	X	X	X
HS82A	N/A	Meat Grip Assembly (Cast Iron)	X	X	X	X
HS83	N/A	Meat Grip Screw & Washer Kit	X	X	X	X
HS98	438177	Meat Grip Handle (Heavy)	X	X	X	X

The above described parts are supplied by **National Band Saw Company** as replacement parts for **Hobart** equipment.

SHARPENER ASSEMBLYS

**NEW STYLE.... FITS MODELS
1612E - 1712E - 1812 -1912**



FITS MODELS

NBS P/N	OEM P/N	DESCRIPTION	512	1612	1612E	1712	1712E	1812	1912	2612	2712	2812	2912
HS59	M-32404-7	Truing Stone Retaining Screw	X	X		X							
HS72	B-109072	Sharpener Thumb Screw	X	X		X							
HS76A	B-122794-4	Sharpener Assy	X	X		X							
HS84A	M-73979	Truing Stone Sub-Assy	X	X		X							
HS85A	M-74007	Grinding Stone Sub-Assy	X	X		X							
HS110	74833	Grinding Stone Retaining Screw	X	X		X							
HS120	RR-10-6	Truing Arm Retaining Ring			X		X	X	X				
HS121	435324	Truing Stone Spring			X		X	X	X	X	X	X	X
HS122	PG-7-40	Truing Stone Pin (5/Pkg)			X		X	X	X				
HS123	435814	Grinding Stone Retaining Screw			X		X	X	X	X	X	X	X
HS124	119867	Grinding Stone Spring			X		X	X	X				
HS125A	N/A	Grinding Stone Sub Assy			X		X	X	X				
HS126	69585-1	Grinding Stone Plug Button			X		X	X	X				
HS127	270503	Grinding Stone Shaft			X		X	X	X				
HS128	BA-2-1	Grinding Stone Balls (25/Pkg)			X		X	X	X				
HS129	119871	Grinding Stone Shaft Spacer			X		X	X	X				
HS130	270501	Grinding Stone Sleeve			X		X	X	X				
HS131	RR-11-4	Grinding Stone Retaining Ring			X		X	X	X				
HST-2	437847	Grinding Stone			X		X	X	X				
HST-3	119882	Holder And Truing Stone Assy			X		X	X	X				

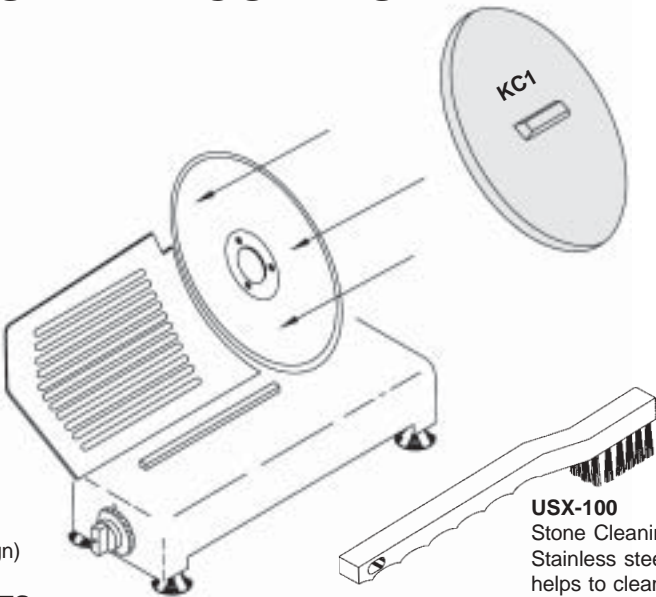
The above described parts are supplied by **National Band Saw Company** as replacement parts for **Hobart** equipment.

SLICER SAFETY COVERS

Don't let the exposed razor-sharp slicer knife becomes a hazard for the repairman and the slicer operator.

Use the KC1, KC2 or SC-02 safety covers to save FINGERS and \$\$\$\$\$.

- KC1**
Knife Safety Cover
(Plastic) (NBS Lip design)
11" & 12" Slicer Knives
 - KC2**
Knife Safety Cover
(Plastic) (NBS Lip design)
12 1/2" Slicer Knives
 - SC-02**
Knife Safety Cover
(Plastic) (Two magnet design)
12 1/2" Slicer Knives
- WHILE SUPPLY LASTS**



USX-100
Stone Cleaning Brush
Stainless steel wire brush
helps to clean grease
clogged sharpening stones

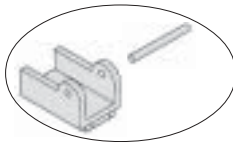
SHARPENER STONES



HST-1
NOTE: Stones are packaged in see-through plastic bags with a divider to protect the surfaces.



HST-2
Grinding Stone



HST-3
Holder And Truing Stone Assy
Includes HS122 Pin

SLICER KNIVES

HSK-1
11 3/4" Diameter
(Hollow Ground)
Stainless Steel

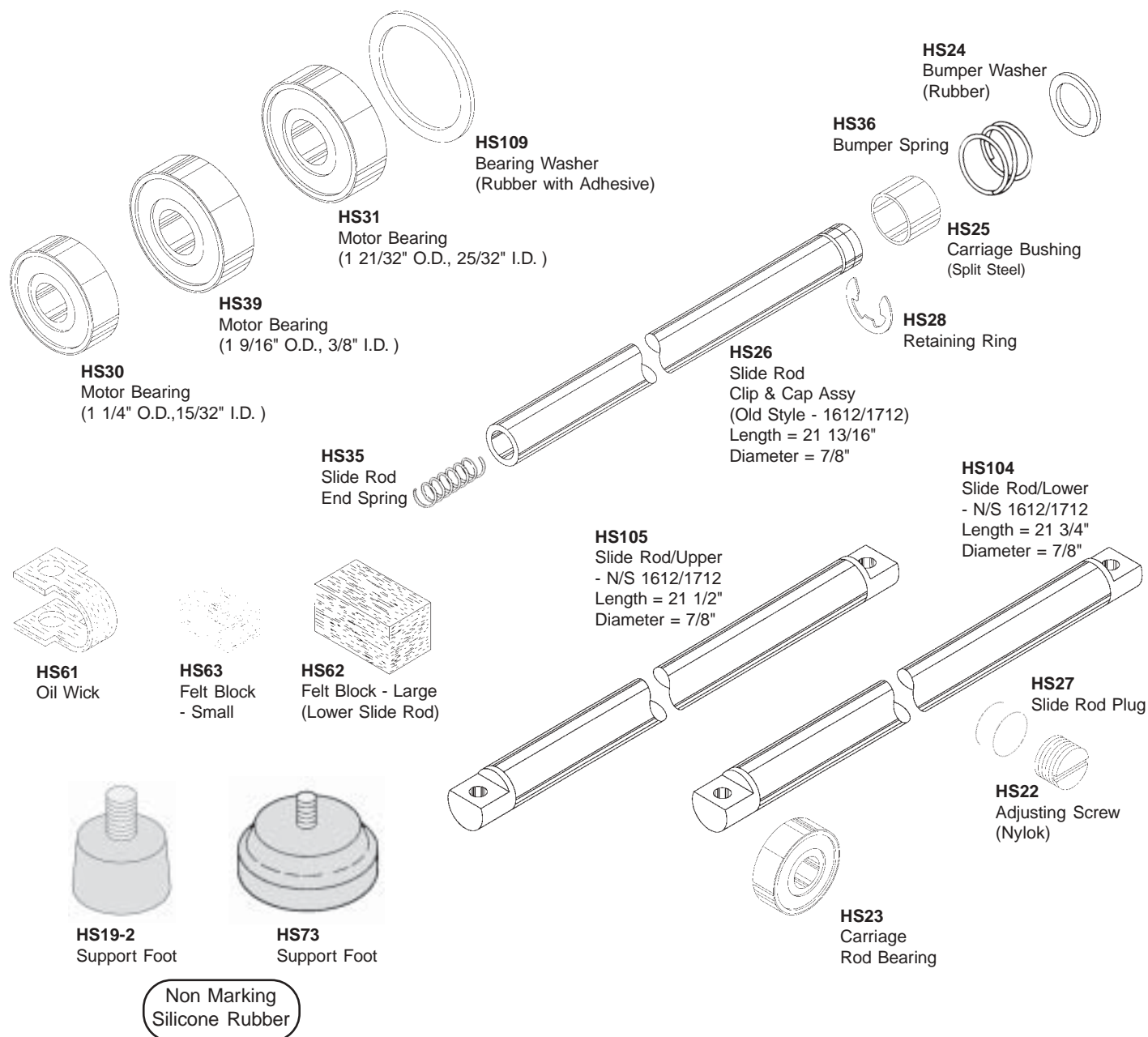
HSK-2
11 3/4" Diameter
Stainless Steel
Fits 1512 Only

HSK-3
11 3/4" Diameter
Stainless Steel

FITS MODELS

NBS P/N	OEM P/N	DESCRIPTION	411	512	1512	1612	1612E	1712	1712E	1812	1912	2612	2712	2812	2912
HSK-1	275913-1	Slicer Knife Stainless Steel				X	X	X	X	X	X	X	X	X	X
HSK-2	20550-2	Slicer Knife Stainless Steel			X										
HSK-3	275913-2	Slicer Knife Stainless Steel		X											
HST-1	N/A	Sharpener Stones	X	X	X	X		X							
HST-2	437847	Grinding Stone					X		X	X	X				
HST-3	119882	Holder And Truing Stone Assy					X		X	X	X				
KC1	N/C	Knife Safety Cover	CAN BE USED ON MOST MANUFACTURERS SLICING MACHINES												
KC2	N/C	Knife Safety Cover													
SC-02	N/C	Knife Safety Cover													
USX-100	N/A	Stone Cleaning Brush													

The above described parts are supplied by **National Band Saw Company** as replacement parts for **Hobart** equipment.

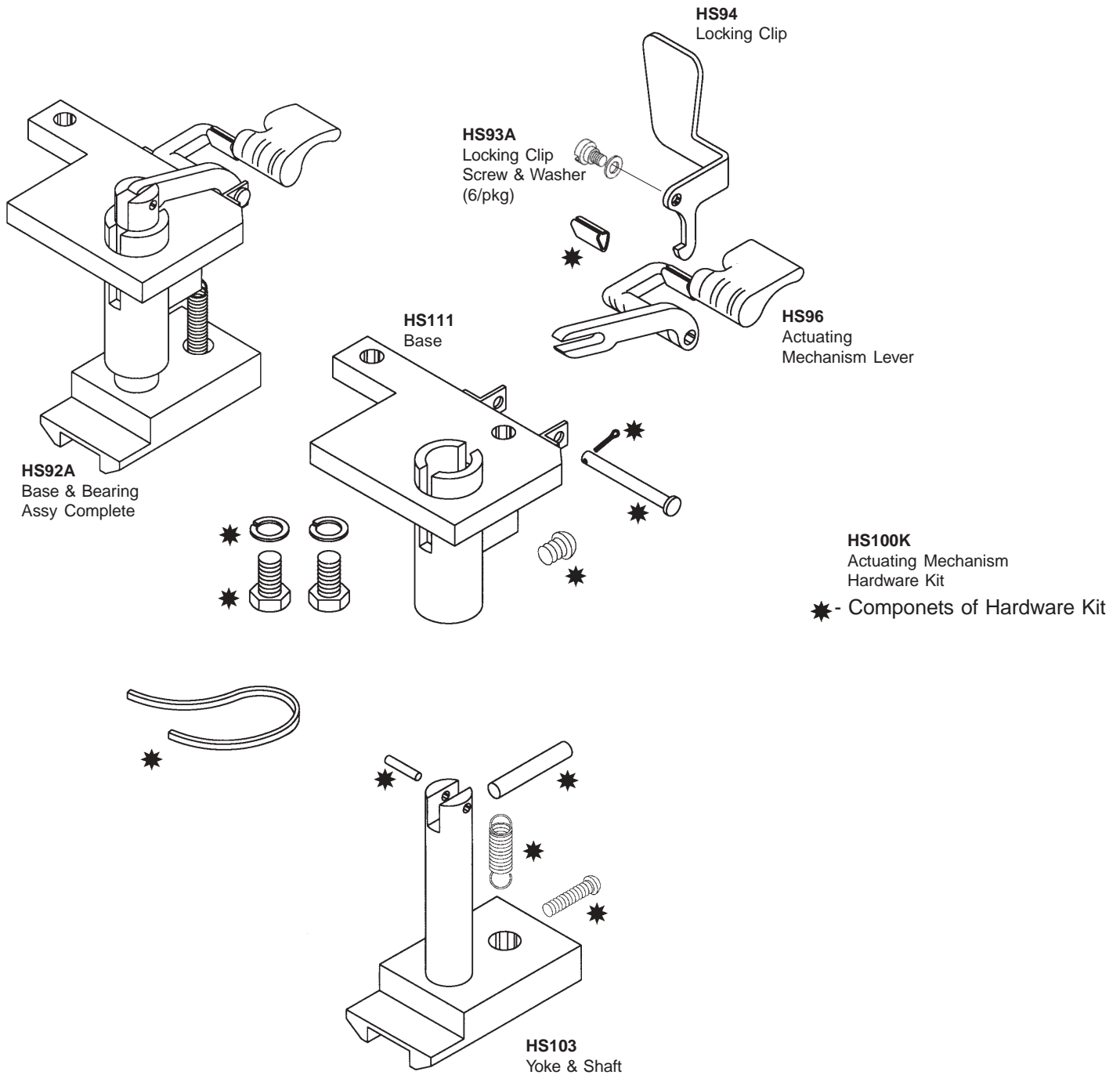


FITS MODELS

NBS P/N	OEM P/N	DESCRIPTION	512	1612	1712	1812	1912
HS19-2	B-18682-1	Support Foot	X	X		X	X
HS22	M-86260	Adjusting Screw (Nylok)		X	X		
HS23	BB-4-11	Carriage Rod Bearing		X	X	X	X
HS24	V-21046-1	Bumper Washer (Rubber)	X	X	X		
HS25	M-88921	Carriage Bushing	X	X	X		
HS26		Slide Rod Clip & Cap Assy		X	X		
HS27	M-83416	Slide Rod Plug		X	X		
HS28	RR-9-15	Retaining Ring		X	X		
HS30	BB-5-5, BB-18-12	Motor Bearing	X	X	X	X	X
HS31	BB-15-41	Motor Bearing		X	X	X	X
HS35	V-12734	Slide Rod End Spring		X	X		
HS36	M-20622	Bumper Spring	X	X	X		
HS39	BB-5-30	Motor Bearing	X				
HS61	274895	Oil Wick		X	X		
HS62		Felt Block - Large (Lower Slide Rod)		X			
HS63	8342-2	Felt Block - Small					
HS73	M-83681	Support Foot			X	X	X
HS104	C-123686-1	Slide Rod/Lower - N/S		X	X		
HS105	C-123686-2	Slide Rod/Upper - N/S		X	X		
HS109	WS-8-9	Bearing Washer		X	X		

The above described parts are supplied by **National Band Saw Company** as replacement parts for **Hobart** equipment.

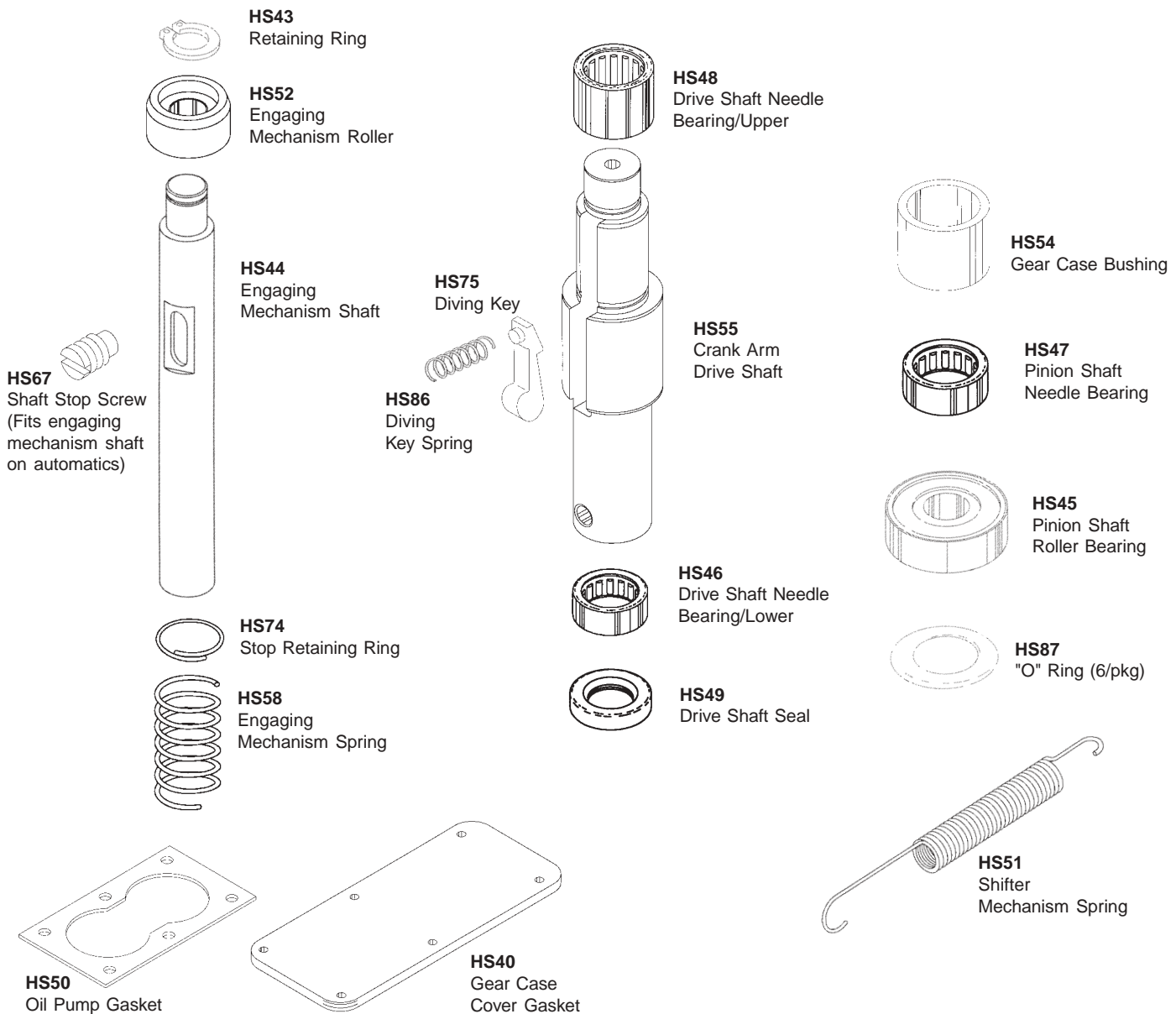
ACTUATING MECHANISM



FITS MODELS

NBS P/N	OEM P/N	DESCRIPTION	1712	1912
HS92A	PL-15697	Base & Bearing Assy Complete	X	
HS93A	M-70351	Locking Clip Screw & Washer (6/pkg)	X	
HS94	P-70240	Locking Clip	X	
HS96	R-70233-2	Actuating Mechanism Lever	X	X
HS100K	N/A	Actuating Mechanism Hardware Kit	X	X
HS103	P-70266	Yoke & Shaft	X	X
HS111	83424	Base	X	X

The above described parts are supplied by **National Band Saw Company** as replacement parts for **Hobart** equipment.



FITS MODELS

NBS P/N	OEM P/N	DESCRIPTION	1612	1712	1812	1912
HS40	C-117710	Gear Case Cover Gasket	X	X	X	X
HS43	RR-4-3	Retaining Ring		X	X	X
HS44	M-70295	Engaging Mechanism Shaft		X	X	X
HS45	BB-15-37	Pinion Shaft Roller Bearing		X	X	X
HS46	BN-2-15	Drive Shaft Needle Bearing/Lower		X	X	X
HS47	BN-2-13	Pinion Shaft Needle Bearing		X	X	X
HS48	BN-2-14	Drive Shaft Needle Bearing/Upper		X	X	X
HS49	M-70442	Drive Shaft Seal		X	X	X
HS50	M-70244	Oil Pump Gasket		X	X	X
HS51	M-70285	Shifter Mechanism Spring		X	X	X
HS52	M-70303	Engaging Mechanism Roller		X	X	X
HS54	D-124640-1	Gear Case Bushing	X	X	X	X
HS55	E-123952	Crank Arm Drive Shaft		X		
HS58	M-70307	Engaging Mechanism Spring		X		
HS67	70324	Shaft Stop Screw		X	X	X
HS74	M-70396	Stop Retaining Ring		X		
HS75	C-114356	Diving Key		X		
HS86	M-70308	Diving Key Spring		X	X	X
HS87	D-67500-2	"O" Ring (6/pkg)		X	X	X

The above described parts are supplied by **National Band Saw Company** as replacement parts for **Hobart** equipment.