

0978 TENSION MOUNT Weigh Modules

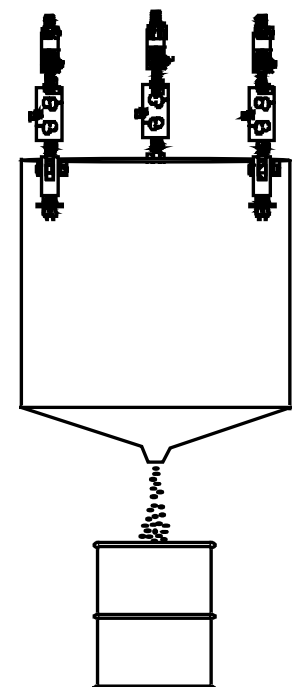
METTLER TOLEDO® Tension Mount Weigh Modules are designed for installations where suspended mounting is required. The ruggedly designed system will safely tolerate the many adverse loading and environmental conditions commonly present in industrial weighing applications...while providing excellent accuracy. Having the scale installed at the point of use, streamlines your process by eliminating steps moving to and from a separate scale, giving you better control over product flow. Tension Mounts contain stainless steel load cells with electroless nickel-plated mounting hardware for long lasting reliability, performance, and environmental protection. Tension weigh module assemblies do not require check rods or bumpers to provide an accurate weighing system, however, some applications may require check rods or bumpers to restrict lateral movement which could cause misalignment of valves and gates, or slow settling times.

Features	Benefits
Universal Mounting Arrangement	■ Can be spaced to virtually any dimension or structure shape
Mounting Hardware Design	■ Only vertical load is measured by load cell
Compact Design	■ Keeps required head room to a minimum
Stainless Steel Load Cells	■ Provides maximum protection in harsh environments
Hazardous Area Approval	■ Factory Mutual Approved Load Cell When used with Mettler Toledo Intrinsically Safe Instruments
NTEP Certified Load Cell for Class III, 3000d (COC# 91-090)*	■ Legal-for-Trade applications

*Except 50 and 10,000 lb cells

All Tension Weigh Module systems are provided complete with three or four weigh modules, a stainless steel NEMA 4X junction box, and all mounting hardware, including spherical rod end bearings to prevent binding from slight misalignments. Tension Mounts can interface with the Jaguar® Industrial Terminal and many other Mettler Toledo instruments and accessories. Through the use of the Jaguar Terminal they may also be ENABLED™ with technology from Allen-Bradley for direct connection to the remote I/O network.

Convert any Suspended Application Into a Scale



Capacity

50 lb	1,000 lb
100 lb	2,000 lb
200 lb	3,000 lb
300 lb	5,000 lb
500 lb	10,000 lb

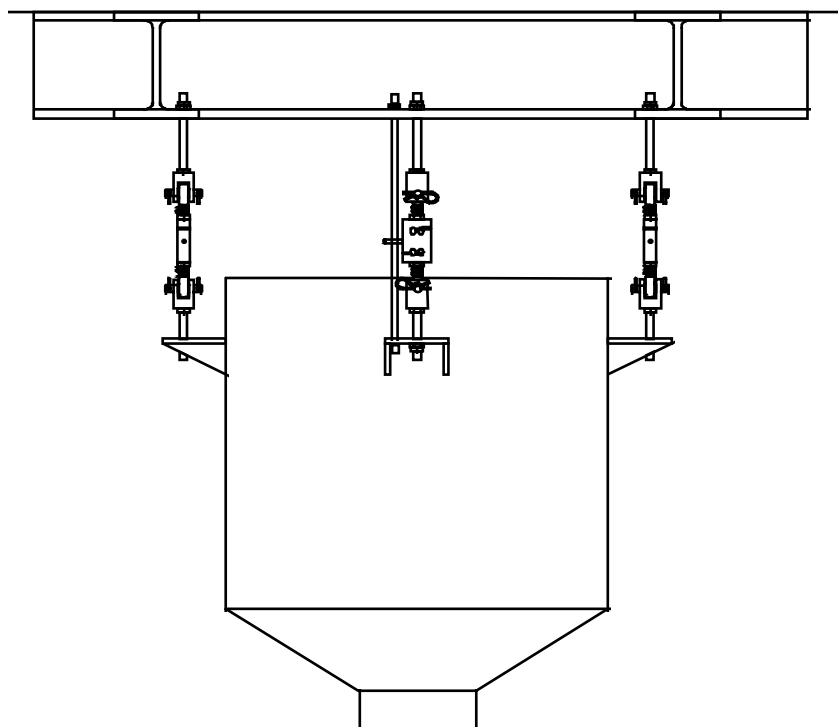
This product was developed, produced and tested in a Mettler Toledo facility that has been audited and registered according to International (ISO 9001) quality standards



METTLER TOLEDO

Specifications subject to change without notice.
©1998 Mettler-Toledo, Inc.
METTLER TOLEDO®, Jaguar®, and FLEXMOUNT® are registered trademarks of Mettler-Toledo, Inc.
ENABLED™ is a trademark of Allen-Bradley Company, Inc.

Example of a Four Cell Suspended Hopper Application

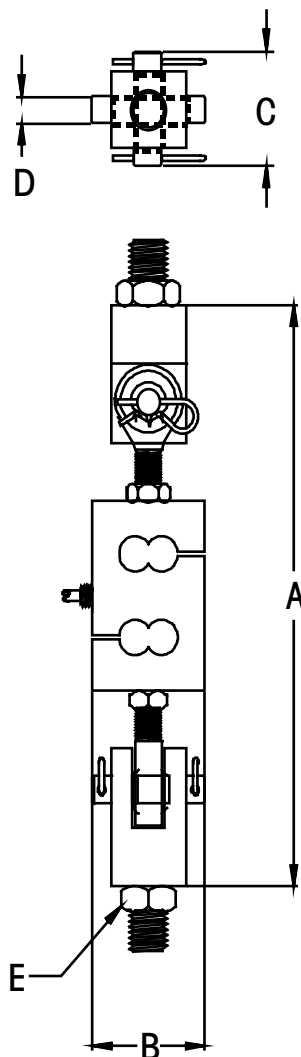


DIMENSIONS:

CAP. (lb)	A	B	C	D	E
50	7-5/8"	2"	1-3/4"	19/32"	3/8"-16 UNF
100	7-5/8"	2"	1-3/4"	19/32"	3/8"-16 UNF
200	7-5/8"	2"	1-3/4"	19/32"	3/8"-16 UNF
300	7-5/8"	2"	1-3/4"	19/32"	3/8"-16 UNF
500	10-9/16"	2-1/4"	2-1/4"	15/16"	3/4"-10 UNF
1,000	10-9/16"	2-1/4"	2-1/4"	15/16"	3/4"-10 UNF
2,000	10-9/16"	2-1/4"	2-1/4"	15/16"	3/4"-10 UNF
3,000	10-9/16"	2-1/4"	2-1/4"	15/16"	3/4"-10 UNF
5,000	12-5/8"	2-3/4"	2-3/4"	1-3/16"	1"-8 UNF
10,000	12-5/8"	3"	2-3/4"	1-7/16"	1"-8 UNF

It is recommended that safety chains, or other means, be used to prevent damage or physical harm in case of component failure in suspended overhead installations.

Mettler Toledo is the largest scale manufacturer in the world and has been a major supplier of industrial weighing equipment since the turn of the century. We have authorized sales and service offices throughout the U.S., Canada, and every major part of the world. Contact your nearest authorized distributor for details on Mettler Toledo Weigh Modules...or any other weighing applications.



METTLER TOLEDO

Specifications subject to change without notice.
 ©1998 Mettler-Toledo, Inc.
 METTLER TOLEDO®, Jaguar® and FLEXMOUNT® are registered trademarks of Mettler-Toledo, Inc.
 ENABLED™ is a trademark of Allen-Bradley Company, Inc.