

## Weigh Modules

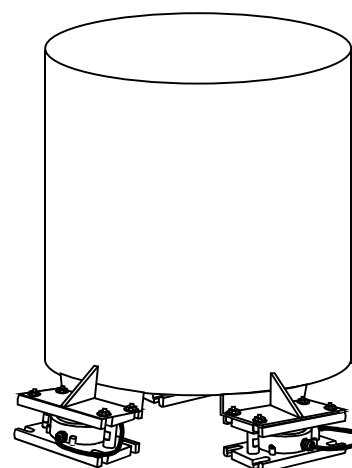
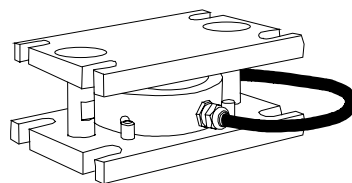
METTLER TOLEDO® 0970 Ringmount Weigh Modules are ideal for process weighing applications requiring the highest accuracy in a Clean-in-Place environment. The 0970 Ringmount Weigh Modules use hermetically sealed 17-4 stainless steel torsion ring load cells. The 0970 comes standard with 316L stainless steel mounting plates and hardened 17-4 stainless steel rocker load pin, providing years of corrosion free reliability.

Features	Benefits
All stainless steel construction	■ Resists corrosion and contamination
Hermetically sealed load cell via a laser welded glass to metal cable connector	■ Prevents moisture penetration into load cell, increases life, meets IP68 rating criteria
Smooth design void of exposed threads, limited holes and cavities.	■ Prevents bacteria growth, eases clean-in-place or steam-in-place process
Integrated overload stop	■ Prevents damage due to accidental overload
Ultra low profile, 58.4 mm (2.3 in) on 5000kg and lower capacities.	■ Saves space, fits where others cannot, lowers C.G. of vessel for increased stability
Self-centering load pin suspension	■ Ensures accurate repeatable weighments
Self-checking design	■ No additional check rods to install
High impedance 1100 ohm bridges	■ Low power consumption, low voltage drop in hazardous areas, drive more load cells
Factory Mutual entity and Ex European approvals	■ Load cell meets global hazardous area requirements
NTEP and OIML certification	■ Load cell has third party verification to global accuracy performance standards

0970 Ring Weigh Modules interface with the JAGXTREME™ Industrial Terminal and many other METTLER TOLEDO instruments and accessories. Through the use of the JAGUAR® terminal, they may also be ENABLED™ with technology from Allen-Bradley® for direct connection to the remote I/O network.

Contact your local METTLER TOLEDO authorized distributor for further information.

**When Accuracy and Sanitation are Vital...**

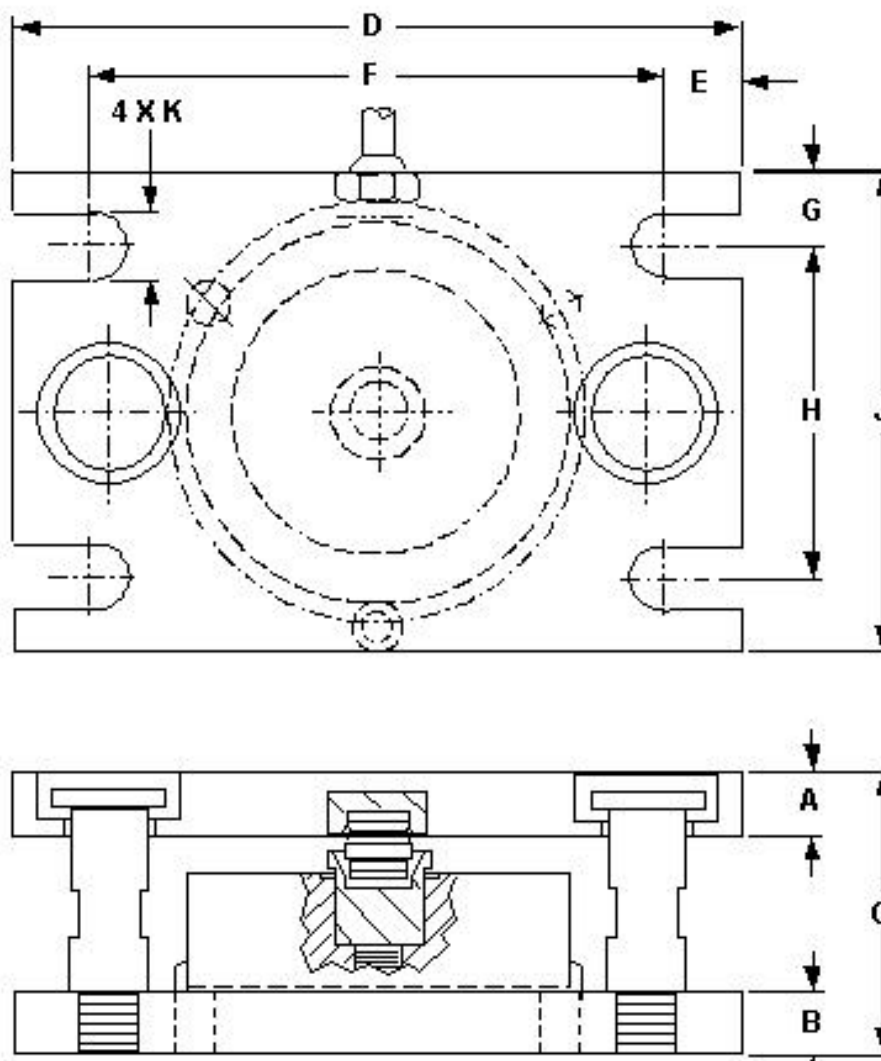


Produced in a Facility that is



### Capacities

250 kg  
500 kg  
1000 kg  
2000 kg  
3500 kg  
5000 kg



### 0970 Ringmount Dimensions

Load Cell Capacity (kg)	A	B	C	D	E	F	G	H	J	K
250-5000	12.7 (0.50)	12.7 (0.50)	58.4 (2.30)	152.4 (6.00)	16.2 (0.64)	120.0 (4.72)	15.8 (0.62)	70.0 (2.75)	101.6 (4.00)	13.5 (0.53)

Dimensions in ( ) are in inches.

METTLER TOLEDO is the largest scale manufacturer in the world and has been a major supplier of industrial weighing equipment since the turn of the century. We have authorized sales and service offices throughout the U.S., Canada, and every major part of the world. Contact your nearest authorized METTLER TOLEDO distributor for details on METTLER TOLEDO Weigh Modules or any other weighing applications.