

0958 CENTERLIGN™

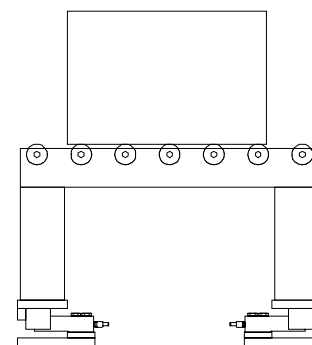
Weigh Modules

Mettler Toledo® CENTERLIGN Weigh Modules are ideal to convert any dynamic loading application into a scale. 0958 CENTERLIGNs are designed for dynamic loading where the weighbridge is subject to high shear forces, such as a conveyor system, fork lift loading a structure from the side, coils of material rolling down a ramp to be stopped on the scale, or mechanical floor and truck scale conversions. CENTERLIGNs streamline your process by eliminating steps and time moving to and from a separate scale...while also giving you better control over product flow. 0958 CENTERLIGN Weigh Modules contain stainless steel load cells, which feature laser-welded hermetic seals* that provide maximum protection for sensitive gage areas in wet and corrosive environments. Mounting hardware for all CENTERLIGN weigh modules is available in mild or stainless steel, to suit the specific application requirements.

Convert Any Dynamic Structure Into a Scale

Features	Benefits
Self Checking/Self Contained	<ul style="list-style-type: none"> ■ No external hardware ■ No external dead/live connections
Universal Mounting Arrangement	■ Can be spaced to virtually any dimension or structure shape
Stainless Steel/Hermetically Sealed* Load Cells	■ Provides maximum protection in harsh environments
Conduit Fitting	■ Greatly simplifies conduit installation
Epoxy Painted Mounting Hardware (Optional Stainless Steel)	■ Provides extra protection in harsh environments
Hazardous Area Approval	■ Factory Mutual Approved Load Cell (When used with Mettler Toledo Intrinsically Safe Instruments)
NTEP Certified Load Cell for Class III Weighing	■ Legal-for-Trade applications

*Except 250 lb. cells



Capacity

250 lb	10,000 lb
500 lb	20,000 lb
1,250 lb	30,000 lb
2,500 lb	45,000 lb
5,000 lb	

This product was developed, produced and tested in a Mettler Toledo facility that has been audited and registered according to International (ISO 9001) quality standards

All Weigh Modules interface with the Jaguar® Industrial Terminal and many other Mettler Toledo instruments and accessories. Through the use of the Jaguar Terminal, they may also be ENABLED™ with technology from Allen-Bradley for direct connection to the remote I/O network .



METTLER TOLEDO

Specifications subject to change without notice.

©1998 Mettler-Toledo, Inc.

METTLER TOLEDO®, Jaguar® and CENTERLIGN™ are trademarks of Mettler-Toledo, Inc.

ENABLED™ is a trademark of Allen-Bradley Company, Inc.

Internet: www.mt.com

telephone: 1-800-786-0038

TH7025.2E

1 of 2

DATA BRIEF

Module Orientation With Respect To Shear Force Direction

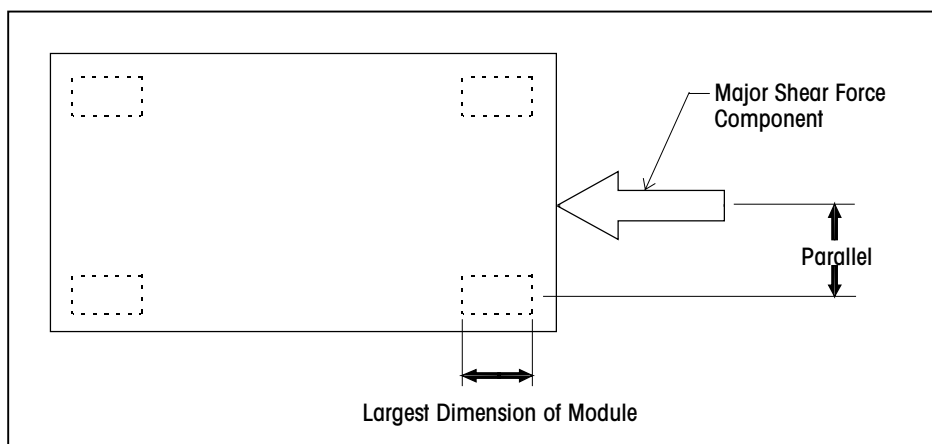
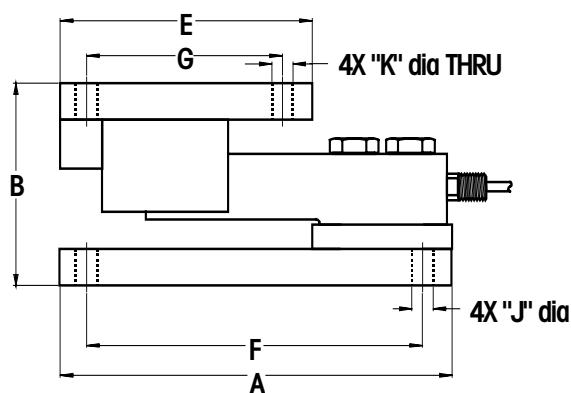
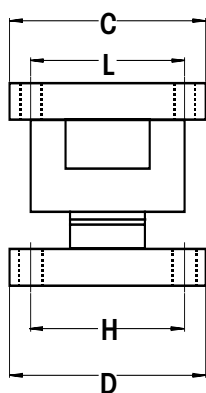
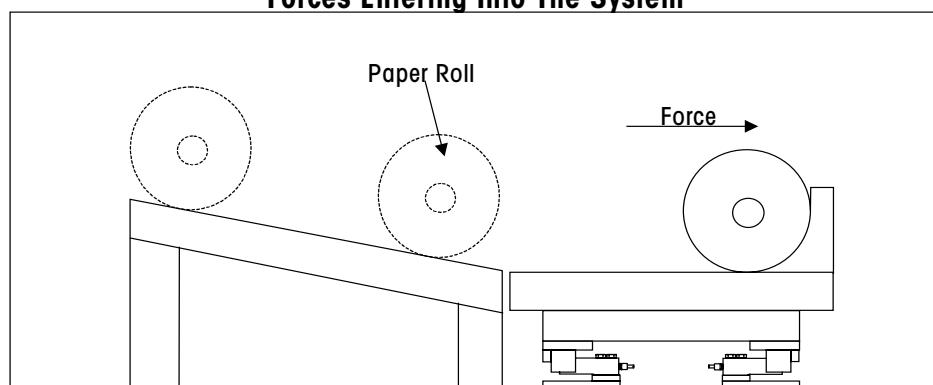


Illustration Showing Horizontal Side Forces Entering Into The System



Dimensions:

Capacity (lb)	A	B	C	D	E	F	G	H	J	K	L
250-5,000	7	4-1/8	4-1/2	4-1/2	4-1/2	6	3-1/2	3-1/2	7/16	7/16	3-1/2
10,000	9-1/4	5-3/8	6	6	6	7-1/4	4	4	11/16	11/16	4
20,000	14	7-1/2	8	8	8	12	6	6	13/16	13/16	6
30,000	14	7-1/2	8	8	8	12	6	6	13/16	13/16	6
45,000	16	9	9	9	9	13-1/2	6-1/2	6-1/2	1-1/8	1-1/8	6-1/2

All dimensions are in inches.

All CENTERLIGN Weigh Modules feature a low profile rocker pin suspension with a high restoring force. This makes them ideally suited for dynamic weighing applications where the weighbridge is subject to high horizontal side forces. The middle figure shows an example application where this is the case. The weight of the load automatically centers the platform and aligns the force transmitting assemblies so that only vertical forces are directed to the load cells. Mettler Toledo is the largest scale manufacturer in the world and has been a major supplier of industrial scales since the turn of the century. We have authorized sales and service offices throughout the U.S., Canada, and every major part of the world. Contact your nearest authorized distributor for details on Mettler Toledo Weigh Modules...or any other weighing applications.

METTLER TOLEDO

Specifications subject to change without notice.

©1998 Mettler-Toledo, Inc.

METTLER TOLEDO®, Jaguar® and CENTERLIGN™ are trademarks of Mettler-Toledo, Inc.

ENABLED™ is a trademark of Allen-Bradley Company, Inc.

Internet: www.mt.com

telephone: 1-800-786-0038

TH7025.2E

2 of 2