

Weigh Modules

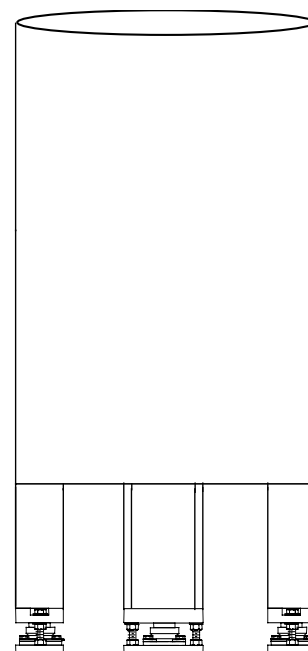
0958 Flexmount HD™

METTLER TOLEDO® 0958 Flexmount® HD Weigh Modules are ideal to convert large static structures such as storage tanks, bins, or silos into scales. Flexmount HD Weigh Modules provide accurate tracking of large inventories. The 0958 Flexmount HD Weigh Modules contain rugged alloy ring torsion load cells with a state-of-the-art load suspension system. The Flexmount HD mounting hardware has a two-part epoxy finish that provides years of protection in harsh environments.

Convert Large Storage Containers Into a Scale

Features	Benefits
Robust design can withstand 100% rated capacity in any direction	■ Safely supports silo, bin, or tank during wind gusts or seismic events!
Self-checking/self-contained	■ No external hardware ■ No external dead/live connections
Allows for thermal expansion and contraction	■ Freely expands/contracts without causing weighing errors
Universal mounting arrangement	■ Can be spaced to virtually any dimension or structure shape
Conduit fitting	■ Allows conduit installation
Epoxy painted mounting hardware	■ Provides extra protection in harsh environments
Hazardous area approval	■ Factory Mutual Approved Load Cell when used with Mettler Toledo Intrinsically Safe Instruments.
NTEP certified load cell	■ Legal-for-trade applications

Flexmount HD's interface with the Jaguar® Industrial Terminal and many other Mettler Toledo instruments and accessories. Through the use of the Jaguar terminal, they may also be ENABLED™ with technology from Allen-Bradley for direct connection to the remote I/O network.



Capacity
50,000 lb
75,000 lb
100,000 lb
150,000 lb
200,000 lb

METTLER TOLEDO

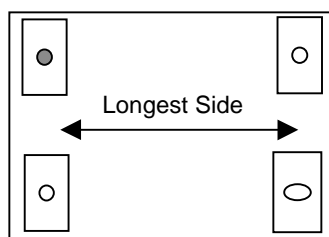
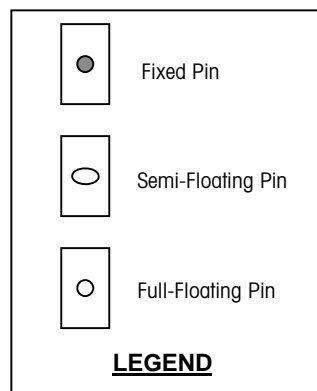
Specifications subject to change without notice.

©1999 Mettler-Toledo, Inc.

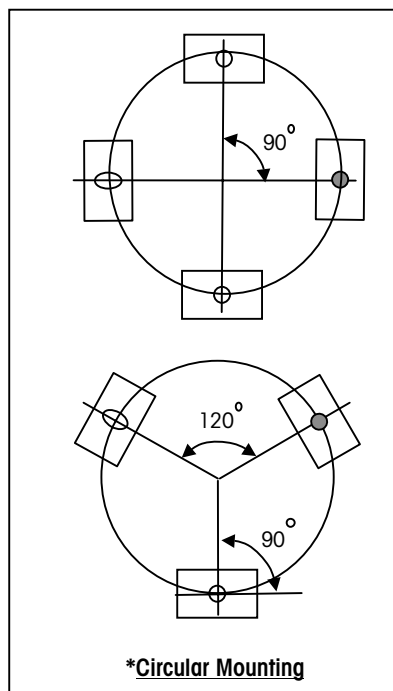
METTLER TOLEDO®, Jaguar® and Flexmount HD™ are registered trademarks of Mettler-Toledo, Inc.

ENABLED™ is a trademark of Allen-Bradley.

PLAN VIEW OF VESSEL MOUNTING ARRANGEMENTS

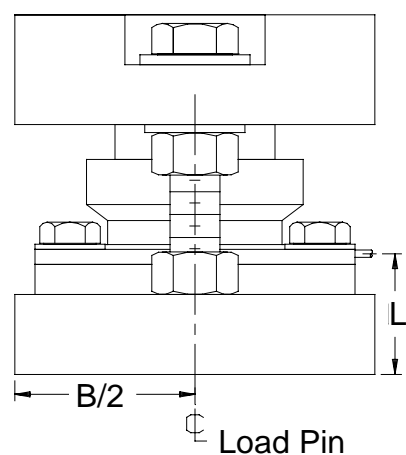
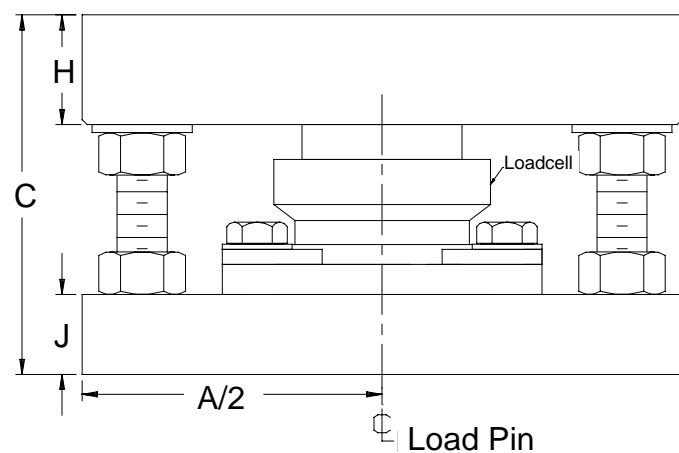
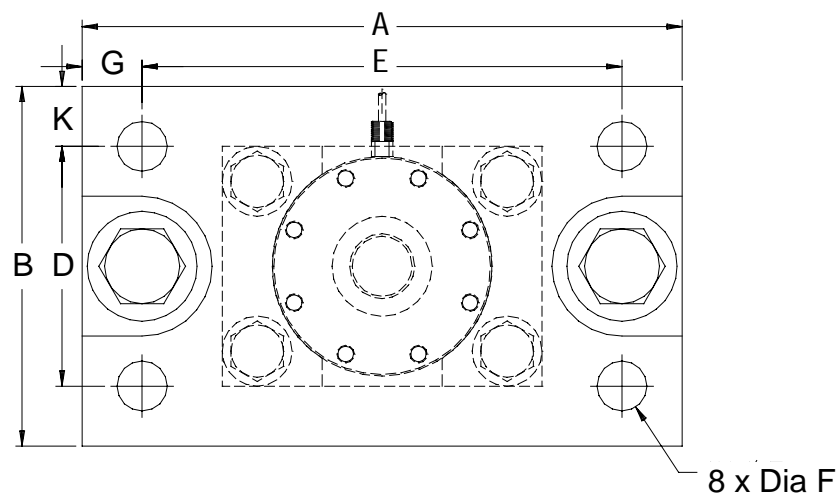


***Rectangular / Square Mounting**



***Note:** In each of the above mounting examples, the Semi-Floating Module is located and oriented to make full use of its expansion/contraction limits while providing resistance to the rotational moment about the fixed pin. The Semi-Floating module must be installed in this manner to provide optimum performance and system self-checking.

The 0958 Flexmount HD Weigh Modules consist of three different module configurations: one Fixed module, one Semi-Floating module, and one or more Full-Floating modules, depending on the application. This gives you a fully checked, self-contained weighing system that is free to expand and contract in all directions without causing weighing errors. Mettler Toledo is the largest scale manufacturer in the world and has been a major supplier of industrial weighing equipment since the turn of the century. We have authorized sales and service offices throughout the U.S., Canada, and every major part of the world. Contact your nearest authorized distributor for details on Mettler Toledo Weigh Modules or any other weighing applications.



Dimensions:

Capacity (lb)	A	B	C*	D	E	F	G	H	J	K	L
50,000	15	9	9	6	12	1-1/4	1-1/2	2-3/4	2	1-1/2	3
75,000	(381)	(229)	(229)	(152)	(305)	(31.8)	(38.1)	(69.9)	(50.8)	(38.1)	(76.2)
100,000											
150,000	18	12	10	8	14	1-5/8	2	2-3/4	2	2	3-1/4
200,000	(457)	(305)	(254)	(203)	(356)	(41.3)	(50.8)	(69.9)	(50.8)	(50.8)	(82.6)

Dimensions in parenthesis () are in millimeters.

*Dimension shown is weighing position, add 1/8" for shipping / installation height.