



# Data Sheet: Model 7566

Orthotropic Steel Deck  
Extreme Duty

METTLER TOLEDO

## 7566 Orthotropic Steel Deck

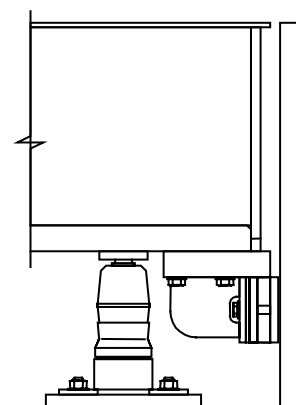
This version of the orthotropic steel deck vehicle scale is designed to weigh heavy off-road vehicles. This scale is particularly well suited for mining, forestry, steel mills, and power plants. It can be configured as either a single width (11'-10") or side-by-side (19'-9") scale.

Feature	Specification
Deckplate Thickness	3/8"
Rib Thickness	3/8"
Endplate Thickness	3/4"
Number of Ribs	7 (3 large, 4 small)
Large Rib Height	15 1/4"
Small Rib Height	12 7/16"
Material Type	ASTM A-36
Capacity	190,000 lb ( $\leq 20'$ ) 300,000 lb ( $> 20'$ )
CLC	130,000 lb
Side-by-side Capacity	200,000 lb ( $\leq 20'$ ) 500,000 lb ( $> 20'$ )
Side-by-side CLC	250,000 lb
Side-by-side Design Trucks	Cat 777, Euclid R90, Komatsu 330M
Profile	29 5/8" (1/4" Shims)
Under Scale Clearance	12" Minimum
Module Lengths	15', 17'-6" and 20'
Scale Widths	11'-10", 19'-9"
Scale Lengths	15' to 120'
CoC	Pending
Foundation Types	Variable Footer Beam Slab
Duty Cycle	Extreme
eMin	20 lb
nMax	10,000 divisions

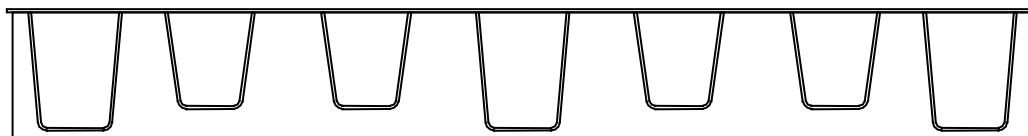
The 7566 comes equipped with most of the features that are required in extreme duty applications. If you require additional clearance under the scale to improve access for clean out, an additional 6" of clearance can be added by ordering the high riser.

Feature	Std.	Opt.
Carboline 15LO	X	
45t MTX	X	
Lightning Protection	X	
Jaguar® Indicator	X	
6" High Riser		X

## 7566 Load Cell View



## 7566 Cross Section



TRUCKS PER DAY

EXTREME

CYCLE

COMMERCIAL

250 -

100 -

0 -



Produced in a facility that is

