



Data Sheet: Model 7541

I-Beam Concrete Deck
Commercial Duty

METTLER TOLEDO

7541 I-Beam Concrete Deck

The 7541 is an I-beam scale designed for pit installations. Each scale comes equipped with a continuous deck channel. It is designed for Commercial Duty Applications.

| Feature | Specification |
|-------------------------|--|
| Main Beam | W21 x 50 lb/ft. |
| Cross Members | W12 x 19 lb/ft. C6 x 8.2 lb/ft. |
| Deck Channel | C6 x 8.2 lb/ft. |
| Concrete Thickness | 6" |
| Number of Cross Members | 5 (25' modules) 4 (20' modules) |
| Module Concrete | 20' – 4 cubic yd. 25' – 5 cubic yd. |
| Module Rebar | 20' – 635 lb. 25' – 800 lb. |
| Module Corrugated | 20' – 200 square ft. 25' – 250 square ft. |
| Material Type | ASTM A-36 |
| Capacity | 120,000 lb ($\leq 20'$) 200,000 lb ($>20'$) |
| CLC | 60,000 lb |
| Profile | 38" (1/4" Shims) |
| Module Lengths | 10', 12', 20' or 25' |
| Scale Widths | 10' |
| Scale Lengths | 10' to 120' |
| CoC | 90-046 |
| Foundation Types | Pit |
| Duty Cycle | Commercial |
| eMin | 20 lb |
| nMax | 10,000 divisions |

The 7541 is equipped with all of the features required for most standard vehicle weighing applications. Many of the product features can be upgraded to provide the exact performance characteristics that are required.

| Feature | Std. | Opt. |
|----------------------|------|------|
| Manholes | X | |
| Polyester Epoxy | X | |
| Carboline 15LO | | X |
| 22.5t POWERCELL® | X | |
| 25t MTX | | X |
| Lightning Protection | X | |
| Cougar® Indicator | X | |
| Jaguar® Indicator | | X |
| Grain Dumps | | X |
| Custom Width | | X |
| Custom Length | | X |

TRUCKS
PER DAY

EXTREME

CYCLE

COMMERCIAL

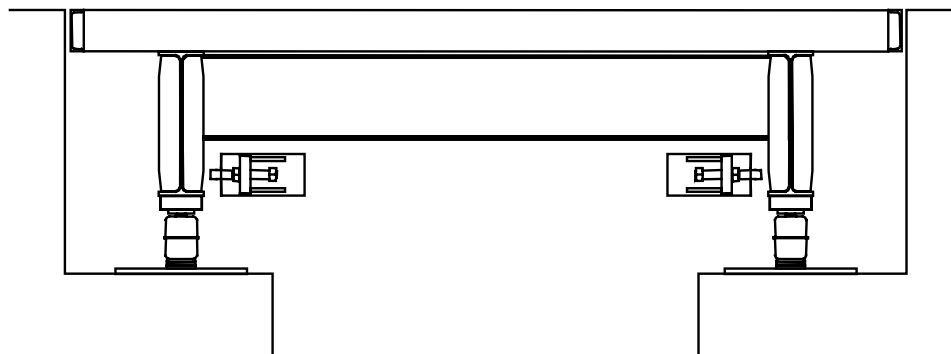
250 –

100 –

0 –

7541

7541 Cross Section



APPROVED



Produced in a
facility that is



Phone: (800) 786-0038

Internet: www.mt.com

Specifications subject to change without notice.

Mettler Toledo®, Cougar®, POWERCELL®, and Jaguar® are Trademarks of Mettler-Toledo, Inc.

©2000 Mettler-Toledo, Inc.

TR7087.1E