

662

Step-Saver™ Service Manual

©Mettler-Toledo, Inc. 2002

No part of this manual may be reproduced or transmitted in any form or by any means, electronic or mechanical, including photocopying and recording, for any purpose without the express written permission of Mettler-Toledo, Inc.

U.S. Government Restricted Rights: This documentation is furnished with Restricted Rights.

Customer Feedback

METTLER TOLEDO

Part / Product Name:

Part / Model Number:

Date:

Provided By:

Customer Name:

Address:

Phone Number:

Fax Number:

Your comments:

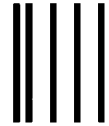
Do not write in space below. For METTLER TOLEDO use only. Response (if appropriate) and corrective action taken.

METTLER TOLEDO Model 662 Service Manual A15516700A 7/02

METTLER TOLEDO
1900 Polaris Parkway
Columbus, Ohio 43240

METTLER TOLEDO® is a registered trademark of Mettler-Toledo, Inc.
©2002 Mettler-Toledo, Inc.
Printed in USA

FOLD THIS FLAP FIRST



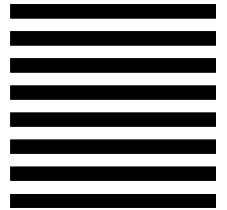
NO POSTAGE
NECESSARY IF
MAILED IN THE
UNITED STATES

BUSINESS REPLY MAIL

FIRST CLASS PERMIT NO. 414 COLUMBUS, OH

POSTAGE WILL BE PAID BY ADDRESSEE

Mettler-Toledo, Inc.
Retail Quality Manager - MTWR
P.O. Box 1705
Columbus, OH 43216
USA



INTRODUCTION

This publication is provided solely as a guide for individuals who have received Technical Training in servicing the Mettler Toledo product.

Information regarding Mettler Toledo Technical Training may be obtained by writing, calling, or faxing to:

Mettler-Toledo, Inc.

1900 Polaris Parkway
Columbus, Ohio 43240
www.mt.com

**METTLER TOLEDO RESERVES THE RIGHT TO MAKE REFINEMENTS OR
CHANGES WITHOUT NOTICE.**

PRECAUTIONS

Read the following instructions carefully before installing, operating, cleaning, or maintaining your new Step-Saver. Save these instructions for future reference.

Contact your supplier of heat sealable wrapping films to verify that the films you are using with heated belt sealers do not release toxic fumes at temperatures below 700°F.

Operate wrapping and sealing equipment only in a well-ventilated area.

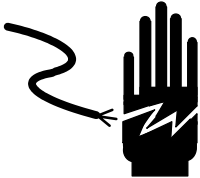

Do not allow untrained personnel to install, operate, clean, inspect, or maintain this machine.

Be sure Step-Saver is connected to a properly grounded outlet of the correct voltage and amperage, as specified on the identification plate. Do not remove ground prong from PLUG.


ALWAYS disconnect Step-Saver from the power source before threading film, cleaning, maintaining, or inspecting.

Keep hands and loose clothing away from hot surfaces such as Low Temperature Cutoff Rod and Sealing Plate while operating, cleaning, maintaining, or inspecting.



CALL METTLER TOLEDO for parts, information, and service.

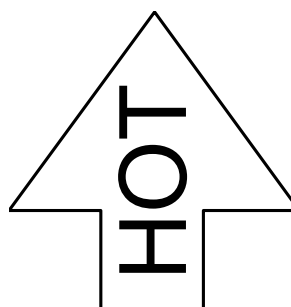
	<div data-bbox="1024 275 1333 338"> WARNING</div> <div data-bbox="873 369 1487 485">DISCONNECT ALL POWER TO THIS UNIT BEFORE INSTALLING, SERVICING, CLEANING, OR REMOVING THE FUSE. FAILURE TO DO SO COULD RESULT IN BODILY HARM AND/OR PROPERTY DAMAGE.</div>
---	---

	<div data-bbox="1032 539 1325 602"> CAUTION</div> <div data-bbox="878 621 1398 699">SURFACES MAY BE HOT EVEN THOUGH POWER SWITCH IS IN THE "OFF" POSITION.</div>
---	---

	<div data-bbox="1040 760 1325 823"> CAUTION</div> <div data-bbox="878 842 1479 997">OPERATE THIS EQUIPMENT ONLY IN A WELL VENTILATED AREA. VERIFY THE FILM IS INTENDED FOR LOW TEMP ROD CUTOFF AND HOT SEALING PLATES AND DOES NOT RELEASE TOXIC FUMES.</div>
---	--

<div data-bbox="902 1062 1195 1125"> CAUTION</div> <div data-bbox="854 1167 1260 1314">50 LB MAXIMUM LOAD LOADS IN EXCESS OF 50 LB COULD RESULT IN IMPROPER MACHINE OPERATION OR DAMAGE</div>	
---	--

<div data-bbox="610 1392 902 1476"> CAUTION</div>		<div data-bbox="1260 1377 1487 1507">— HOT — DO NOT TOUCH HEATING ELEMENTS P/N 12021200A</div>
---	---	---



P/N 81876200A

CONTENTS

1	General Description	1-1
2	Specifications.....	2-1
	Agency Approval	2-1
	Environmental Requirements.....	2-1
	Power Requirements	2-1
	Film Capacity.....	2-1
3	Safety and Precautions	3-1
4	Setup	4-1
	Sealing Plate Thermostat.....	4-1
5	Film Loading and Threading	5-1
	Model 662-0200.....	5-1
	Capacity: 2 rolls of film	5-1
	Model 662-0300 Capacity: 3 rolls of film	5-3
	Adjusting Film Tension	5-4
6	Operator Controls	6-1
	Power Switch and "Power On" Indicator	6-1
	Low Temp Cutoff Rod	6-1
	Sealing Plate Thermostat.....	6-2
7	Cleaning and Maintenance.....	7-1
	General Precautions	7-1
	Cutoff Rod.....	7-1
	Teflon Cover on Sealing Plate	7-2
	Scale Platter and Platter Shelves	7-2

Film Support Rollers	7-2
Troubleshooting	7-2

8	Replacement Parts.....	8-1
	2-Roll Step Saver	8-1
	3-Roll Step Saver	8-5
	Heater Bar Kit, 16473600A	8-9
	Sealing Plate	8-10
	Receptacle Box	8-11

9	Accessories.....	9-1
	Scale Platform Positions.....	9-2
	8-inch Extension Conveyor 0925-0385	9-2
	Printer Shelf for 317 0925-0352	9-3
	Center Shelf for Scale Controller 0925-0353.....	9-3
	Swivel Shelf for Model 355 0925-0388	9-4
	Post W/Tilt for Model 8360/8361 0925-0345	9-4
	Shelf For Model 8305/8422/8423 0925-0354.....	9-5
	Swivel Shelf For Model 8450/8460/8461 0925-0322	9-5
	Platter Shelf 0925-0137.....	9-6
	Label Rack 0925-0094 and Label Rack Support 0925-0160	9-6
	Model 8270 Platter W/O Rollers 0925-0348	9-7
	Model 8270 Platter W/Rollers 0925-0383.....	9-7
	Commodity Rack 0925-0404	9-8

10	Wiring Diagram.....	10-1
-----------	----------------------------	-------------

1

General Description

The Mettler Toledo Model 662 Step-Saver Wrap Station is designed to increase wrapping and weighing production by integrating the scale into the wrap station as one unit. Features include a low temp film cutoff rod, flip away film selectors, arborless film supports and Teflon covered sealing plate. Various shelves and brackets are available for custom configurations.

The model 662 Step-Saver is designed in two versions. The 662-0200 will accept two rolls of film from 12" to 20" wide. The 662-0300 will accept three rolls of film from 12" to 20" wide.





For your notes

2

Specifications

Agency Approval

UL and CSA approved.



Environmental Requirements

The Model 662 Step-Saver operating range is between +5° to +35°C (+41° to +95°F) at 10% to 95% relative humidity, non-condensing. The shipping and storage temperature range is between 0°C to +66°C (+32°F to +150°F) at 10% to 95% relative humidity, non-condensing. The Model 662 is designed for use in prepackaging backroom environments. The Model 662 is not intended for wash-down operation, nor for operation in environments of extreme dust, heat, cold, or humidity. No NEMA rating applies.

Power Requirements

The Model 662 Step-Saver requires 115 VAC, 60 Hz., single phase, power at 6 amps nominal to operate. The circuit must be well regulated, transient free, dedicated, and properly grounded.

Film Capacity

The 662-0200 Step-Saver will accept 2 rolls of film up to 20" wide.

The 662-0300 Step-Saver will accept 3 rolls of film up to 20" wide.

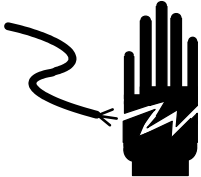


For your notes

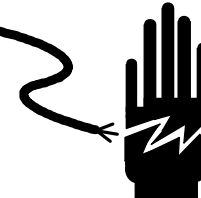

3

Safety and Precautions

Before cleaning or servicing this unit, disconnect AC power by turning the power switch off, then unplugging the AC line cord from the outlet. Failure to observe these precautions could result in bodily harm.

	 WARNING
	DISCONNECT ALL POWER TO THIS UNIT BEFORE INSTALLING, SERVICING, CLEANING, OR REMOVING THE FUSE. FAILURE TO DO SO COULD RESULT IN BODILY HARM AND/OR PROPERTY DAMAGE.

Do not allow untrained personnel to operate, clean, inspect, maintain, service, or tamper with this equipment.



	 WARNING
	ONLY PERMIT QUALIFIED PERSONNEL TO SERVICE THIS EQUIPMENT. EXERCISE CARE WHEN MAKING CHECKS, TESTS AND ADJUSTMENTS THAT MUST BE MADE WITH POWER ON. FAILING TO OBSERVE THESE PRECAUTIONS CAN RESULT IN BODILY HARM.

Caution, Low Temp Cutoff Rod and Sealing Plate surfaces may be hot even though power switch is in the off position.

	 WARNING
	Surface may be hot. Allow Surface to cool before cleaning or servicing.

Always replace labels that are damaged, illegible or missing.

Contact your film supplier to verify that the film you are using is intended for use with a low temp rod cutoff and hot sealing plates and does not release toxic fumes. Operate this equipment only in a well-ventilated area.

	 CAUTION
	OPERATE THIS EQUIPMENT ONLY IN A WELL-VENTILATED AREA. VERIFY THE FILM IS INTENDED FOR LOW TEMP ROD CUTOFF AND HOT SEALING PLATES AND DOES NOT RELEASE TOXIC FUMES.

4

Setup

Contact your film supplier to verify that the film you are using is intended for use with a low temp rod cutoff and hot sealing plates and does not release toxic fumes.

Operate this equipment only in a well-ventilated area.

A duplex outlet is provided on the back of the Model 662 for supplying power to the scale controller and printer.

See the Accessories pages in Chapter 10 of this manual for attachment information.

Sealing Plate Thermostat

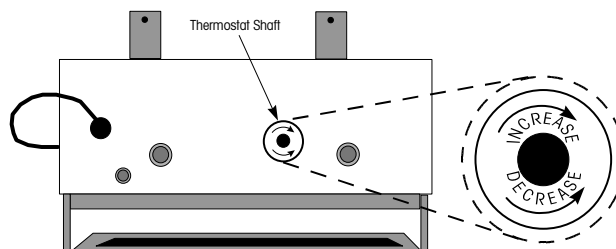
Note: Never set the thermostat higher than necessary to get a good seal, or the film on the bottom of the package may burn.

The Sealing Plate Thermostat is located on the underside of the Sealing Plate.

On new units, the temperature is set to the minimum from the factory. When the Model 662 is first installed, the temperature must be adjusted according to the room temperature where the unit will be used. If the room temperature is warm, the thermostat temperature should be set lower (decrease). If the room is cold, the temperature may need to be set higher (increase) to assure a good seal of the film. After adjusting the thermostat temperature, it will take approximately 15 minutes for the temperature to adjust to the new setting.

After adjusting the thermostat and waiting 15 minutes for the new temperature to stabilize, test for proper sealing of the film. If the film starts to melt, lower the temperature, or if sealing is not adequate, raise the temperature and retest sealing.

To change the temperature of the Sealing Plate, turn the thermostat shaft with a screwdriver. To raise the temperature, turn the shaft clockwise. To lower the temperature, turn the shaft counterclockwise.



Sealing Plate Thermostat



For your notes

5

Film Loading and Threading

Model 662-0200

Capacity: 2 rolls of film

Load two rolls of film onto the arborless film cradles. Any size film width from 12" to 20" may be used on the Model 662 Step-Saver. It is recommended that the smaller roll of film be placed on the bottom cradle.

Before placing the roll of film on its cradle, orient the Film Roll so that the end of the film will hang down between the cradle rollers, and the film will dispense from the top of the roll towards the front of the Step-Saver. (Refer to the Film Threading Diagram, Figure 5-1).

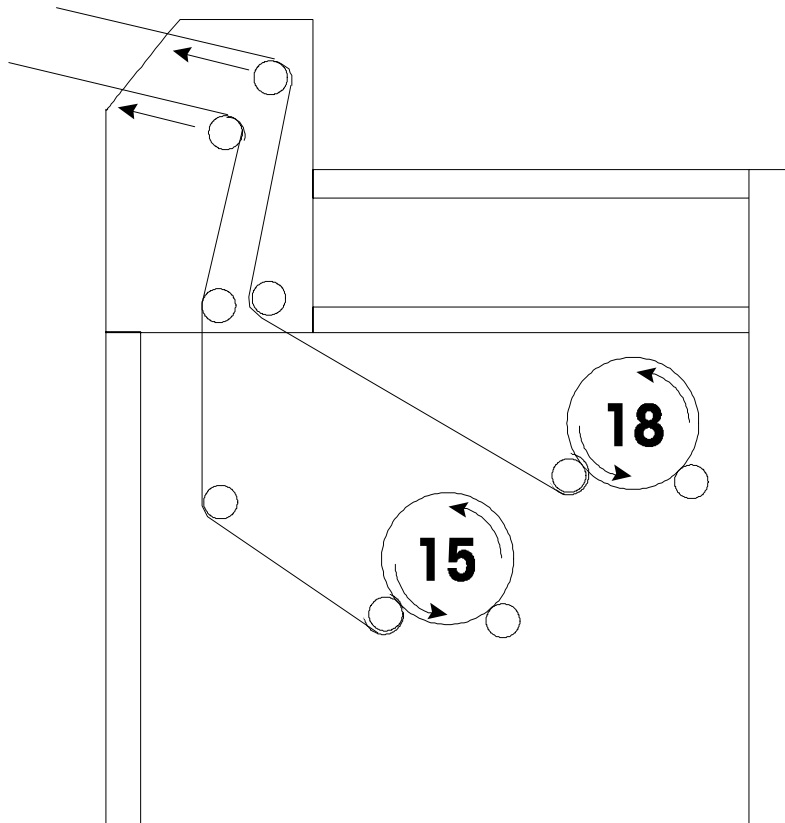


Figure 5-1: Film Threading Diagram - 2 Rolls of Film

Center the film rolls on their respective rollers. Position the Film Roll Retaining Grommets approximately 1/4" away from the ends of each film roll. (Refer to Figure 5-2).

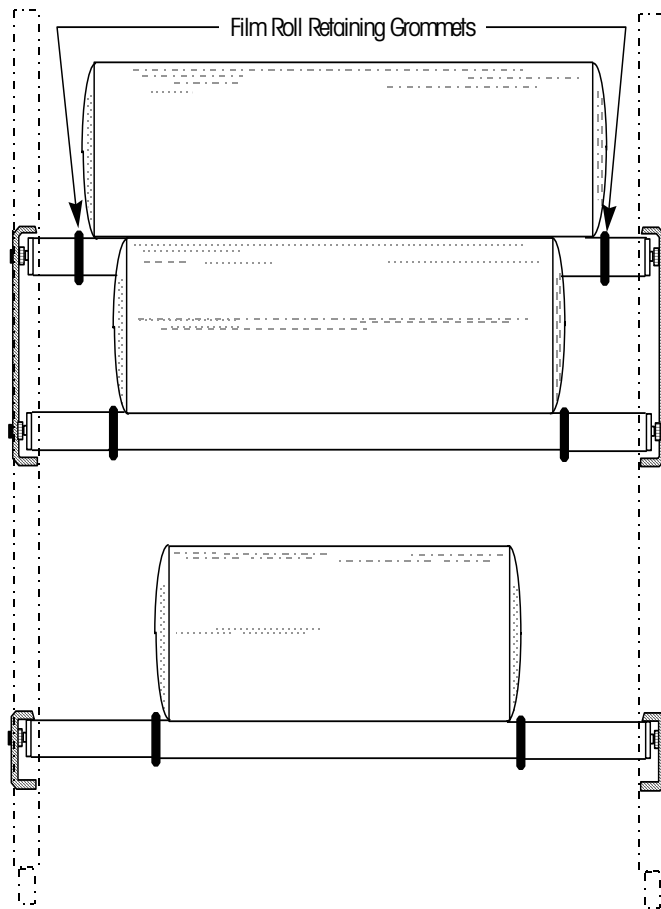


Figure 5-2: Film Roll Retaining Grommet

Thread the film through the film rollers and into the Film Selector as shown in the Film Threading Diagram (Figure 5-1).

Tear or cut the end of the film straight across, and fold the end of the film neatly over the Film Leaf (Figure 5-3).

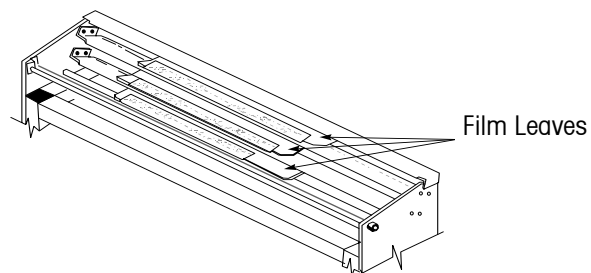


Figure 5-3: Film Leaf

Model 662-0300

Capacity: 3 rolls of film

Load three rolls of film onto the arborless film cradles. Any size film width from 12" to 20" may be used on the Model 662 Step-Saver. It is recommended that the small roll of film be placed on the bottom cradle, the medium roll on the middle cradle, and the large roll on the top cradle.

Before placing the roll of film on its cradle, orient the Film Roll so that the end of the film will hang down between the cradle rollers, and the film will dispense from the top of the roll towards the front of the Model 662 Step-Saver. (Refer to the Film Threading Diagram, Figure 5-4)

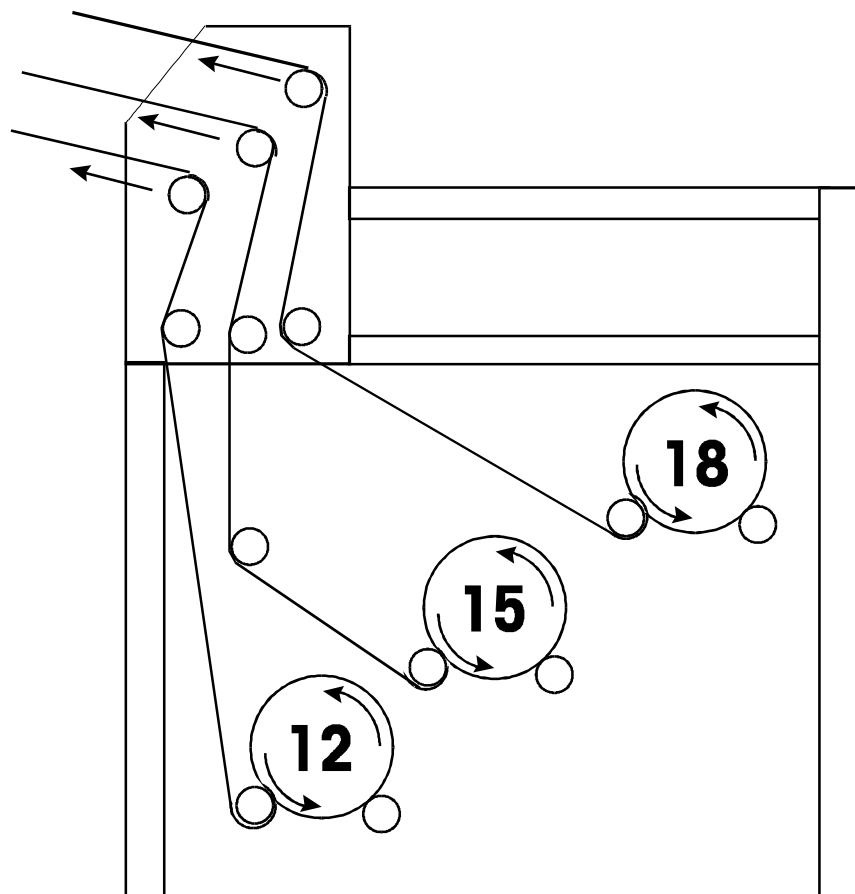


Figure 5-4: Film Threading Diagram - 3 Rolls of Film

Center the film rolls on their respective rollers. Position the Film Roll Retaining Grommets approximately 1/4" away from the ends of the film roll. (Refer to Figure 5-2)

Thread the film through the film rollers and into the Film Selector as shown in the Film Threading Diagram. (Figure 5-4)

Tear or cut the film straight across, and fold the end of the film neatly over the Film Leaf. (Figure 5-3)

Adjusting Film Tension

The film tension should be adjusted to suit your wrapping comfort. It should be loose enough so that the film pulls easily from the roll, yet tight enough to stretch the film as you pull it, to allow you to produce a tight, wrinkle-free package. To provide better control of film tension, this machine is equipped with a dual braking system for each film roll. A Film Brake is located at each end of the front Film Support Roller of each roll of film. The film tension is adjusted by loosening or tightening the Film Roller Brakes. To increase the film tension, turn the Film Roller Brake Adjusting Screw clockwise. To decrease the film tension, turn the Film Roller Brake Adjusting Screw counterclockwise.

For uniform pull on the film, both brakes on a Film Support Roller must be set for equal tension. Before installing a roll of film, loosen each brake so the roller turns freely. Then tighten each adjusting screw until the brake is lightly snugged against the roller. After the roll is mounted, adjust the tension, as desired, by turning both adjusting screws in 1/4 turn increments.

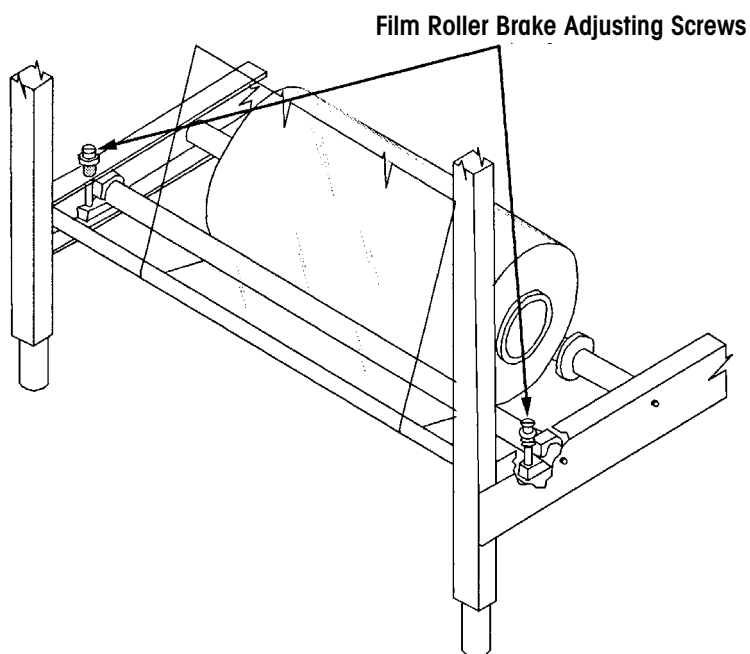


Figure 5-5: Film Roller Brake Adjusting Screws

6

Operator Controls

Power Switch and "Power On" Indicator

The Power Switch is located in the control box that is fastened to the right front leg of the Model 662. (Refer to Figure 6-1) The switch controls power to the Low Temperature Cutoff Rod and the Sealing Plate.

The "Power On" Indicator light is located on the upper part of the Power Switch. (Figure 6-1)

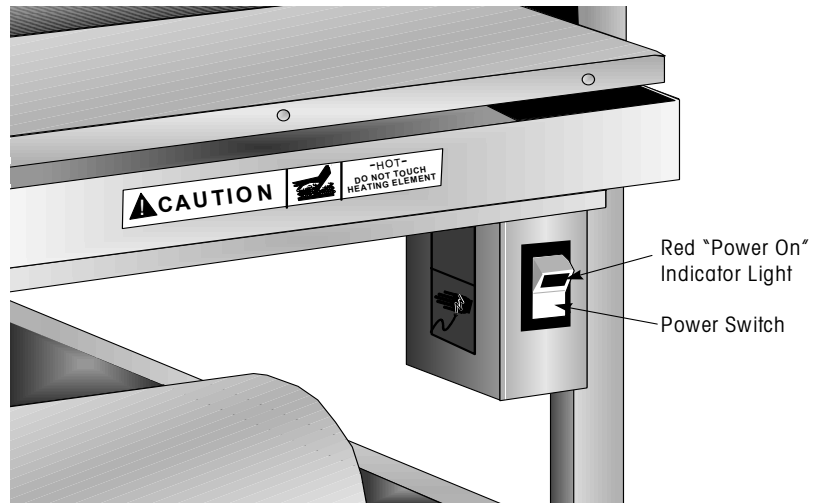


Figure 6-1: Power Switch and "Power On" Indicator

Low Temp Cutoff Rod

The temperature of the Cutoff Rod is thermostatically controlled. The temperature is set at the factory and is not adjustable. Allow 15 minutes when first turning the power on for the Low Temp Cutoff Rod to reach operating temperature.

Sealing Plate Thermostat

Note: Never set the thermostat higher than necessary to get a good seal, or the film on the bottom of the package may burn.

On new units, the temperature is set to the minimum from the factory. When the Model 662 is first installed, the temperature must be adjusted according to the room temperature where the unit will be used. If the room temperature is warm, the thermostat temperature should be set lower (decrease). If the room is cold, the temperature may need to be set higher (increase) to assure a good seal of the film. After adjusting the thermostat temperature, it will take approximately 15 minutes for the temperature to adjust to the new setting.

After adjusting the thermostat and waiting 15 minutes for the new temperature to stabilize, test for proper sealing of the film. If the film starts to melt, lower the temperature, or if sealing is not adequate, raise the temperature and retest sealing.

The Sealing Plate Thermostat is located on the underside of the Sealing Plate. (Figure 6-2) To change the temperature of the Sealing Plate, turn the thermostat shaft with a screwdriver. To raise the temperature, turn the shaft clockwise. To lower the temperature, turn the shaft counterclockwise. After adjusting the thermostat, it will take approximately 15 minutes for the temperature to adjust to the new setting.

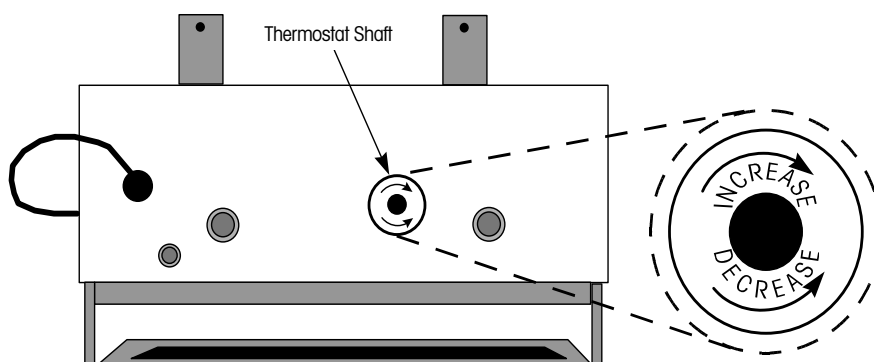


Figure 6-2: Sealing Plate Thermostat


7

Cleaning and Maintenance

General Precautions

	 WARNING
	DISCONNECT ALL POWER TO THIS UNIT BEFORE INSTALLING, SERVICING, CLEANING, OR REMOVING THE FUSE. FAILURE TO DO SO COULD RESULT IN BODILY HARM AND/OR PROPERTY DAMAGE.

	 WARNING
	DO NOT SPRAY OR WASHDOWN. HAZARD OF ELECTRICAL SHOCK OR BURNS.

 WARNING
DO NOT USE SOLVENTS, CHEMICALS, OR ABRASIVES ON MACHINE, AS THESE MAY HARM SURFACES.

Cutoff Rod

	 CAUTION
	SURFACES MAY BE HOT EVEN THOUGH POWER SWITCH IS IN THE "OFF" POSITION.

- Turn power off, and then disconnect the power cord from the outlet.
- Allow surface to cool down before cleaning.
- Clean daily, using a dampened scouring pad. Do not use abrasives, such as emery cloth or sand paper.

Teflon Cover on Sealing Plate



- Turn power off, and then disconnect the power cord from the outlet.
- Allow sealing plate to cool down before cleaning.
- Clean daily using a clean, damp cloth and a mild detergent.

Scale Platter and Platter Shelves

Clean daily, using a clean, damp cloth and a mild detergent.

Film Support Rollers

When replacing a roll of film, the Film Support Rollers and the Film Guide Rollers should be cleaned to remove any particles or burrs that could puncture the film. Clean the rollers with a clean, damp cloth and mild detergent.

Troubleshooting

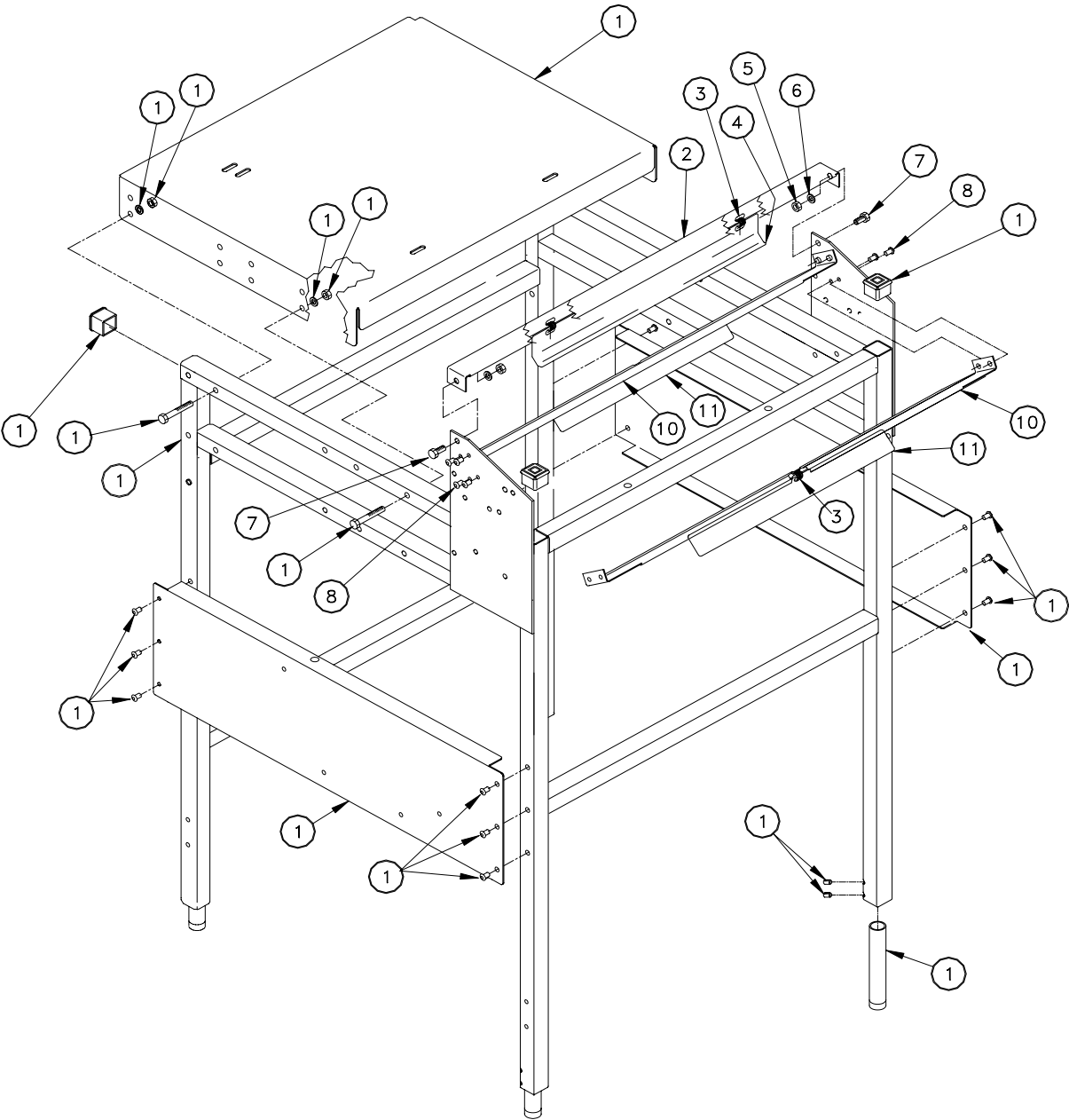
- Is the machine connected to a properly grounded outlet of the correct amperage and voltage?
- Are the circuit breakers in the building service panel in the ON position?
- Is the power switch in the ON position?
- Is the sealing plate thermostat adjusted properly?
- Is the Low Temp Cutoff Rod clean?
- Is the film loaded and threaded properly?
- Are the Film roller brakes adjusted properly?
- Are the film support rollers clean and free of burrs?
- Is the scale controller plugged into the outlet on the back of the Step-Saver?
- Is the printer plugged into the outlet on the back of the Step-Saver?

8

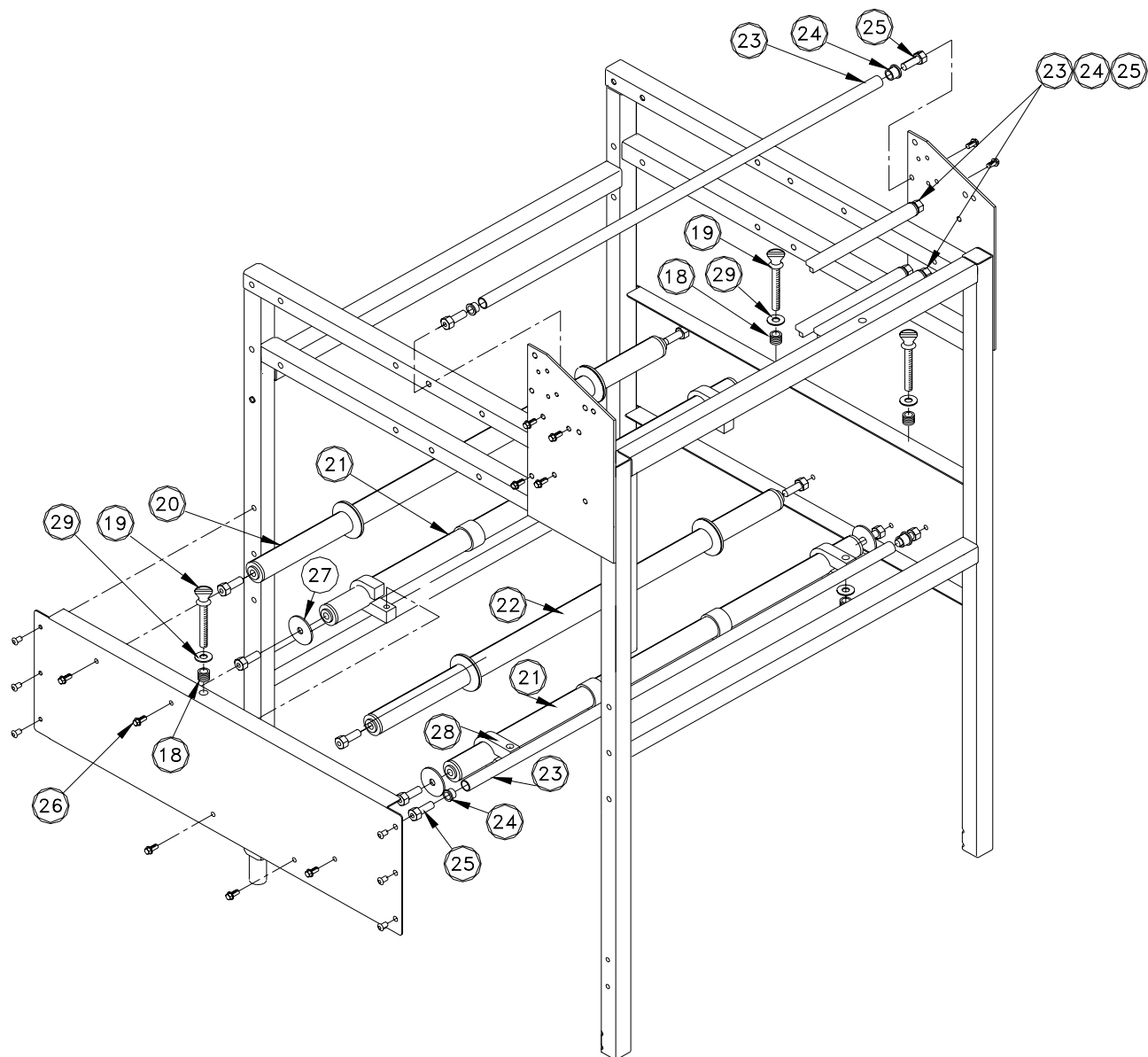
Replacement Parts

This chapter covers replacement part numbers. Carefully check your part numbers for accuracy before ordering.

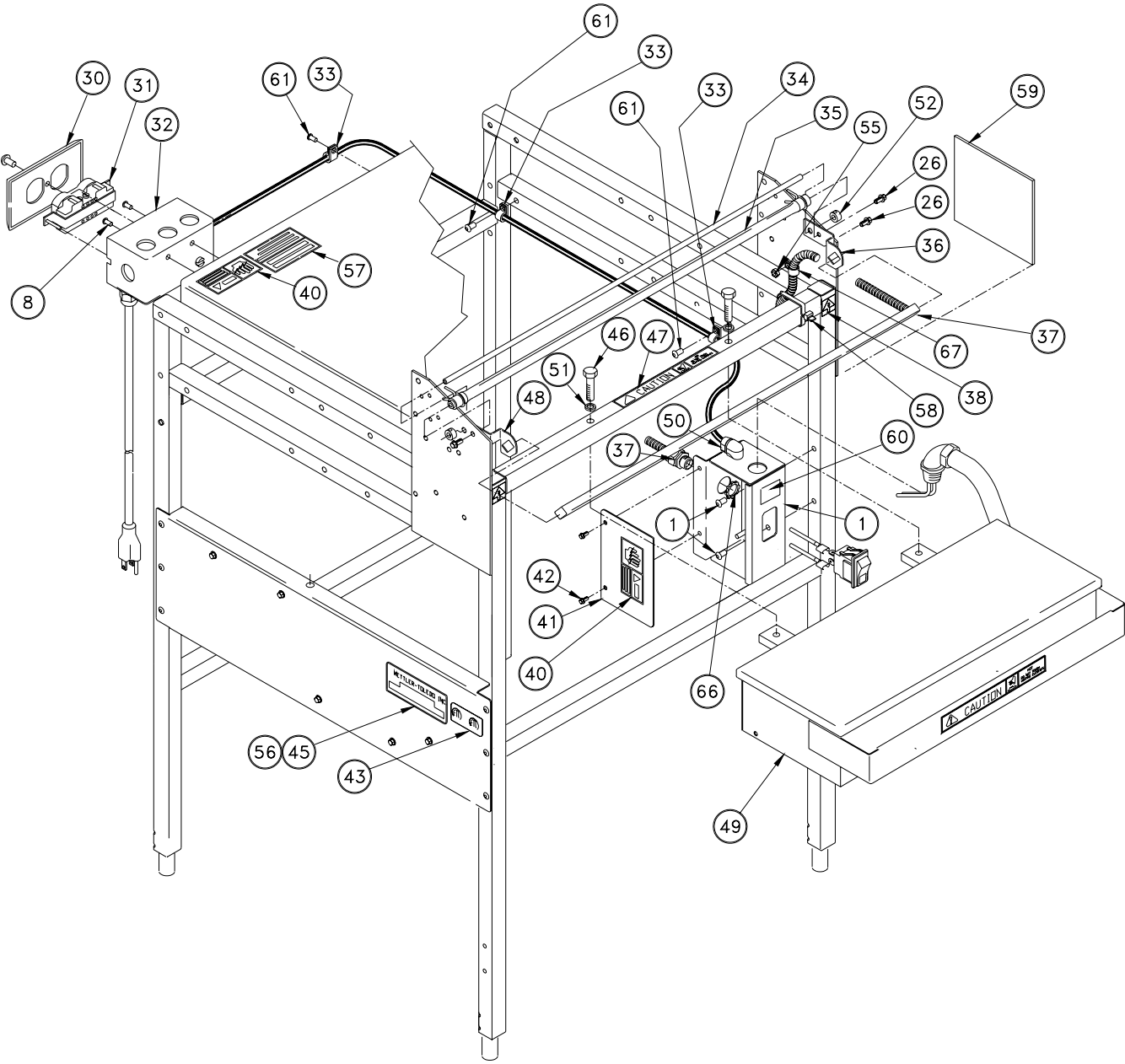
2-Roll Step Saver



2-Roll Step Saver



2-Roll Step Saver

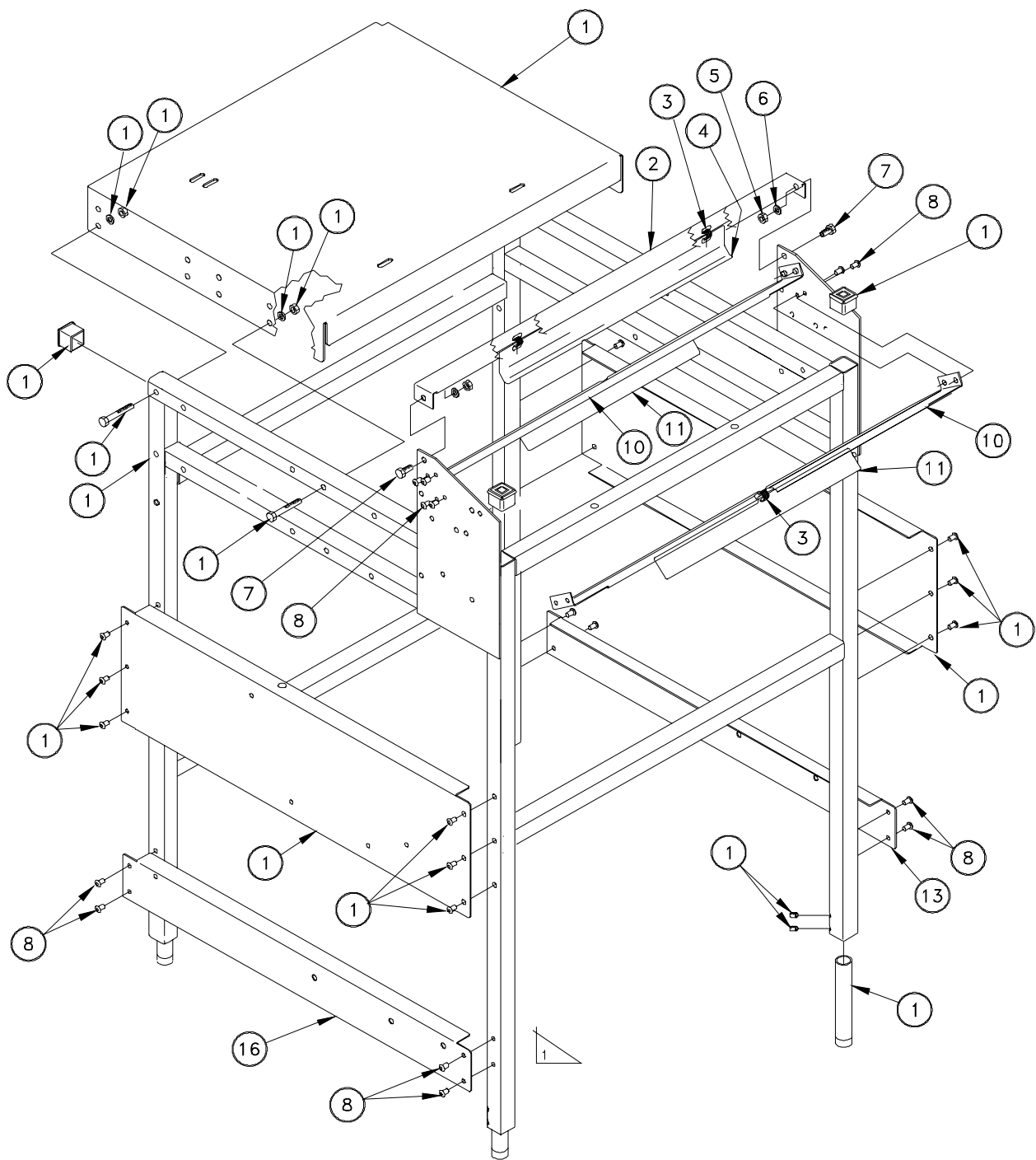


2-Roll Step Saver

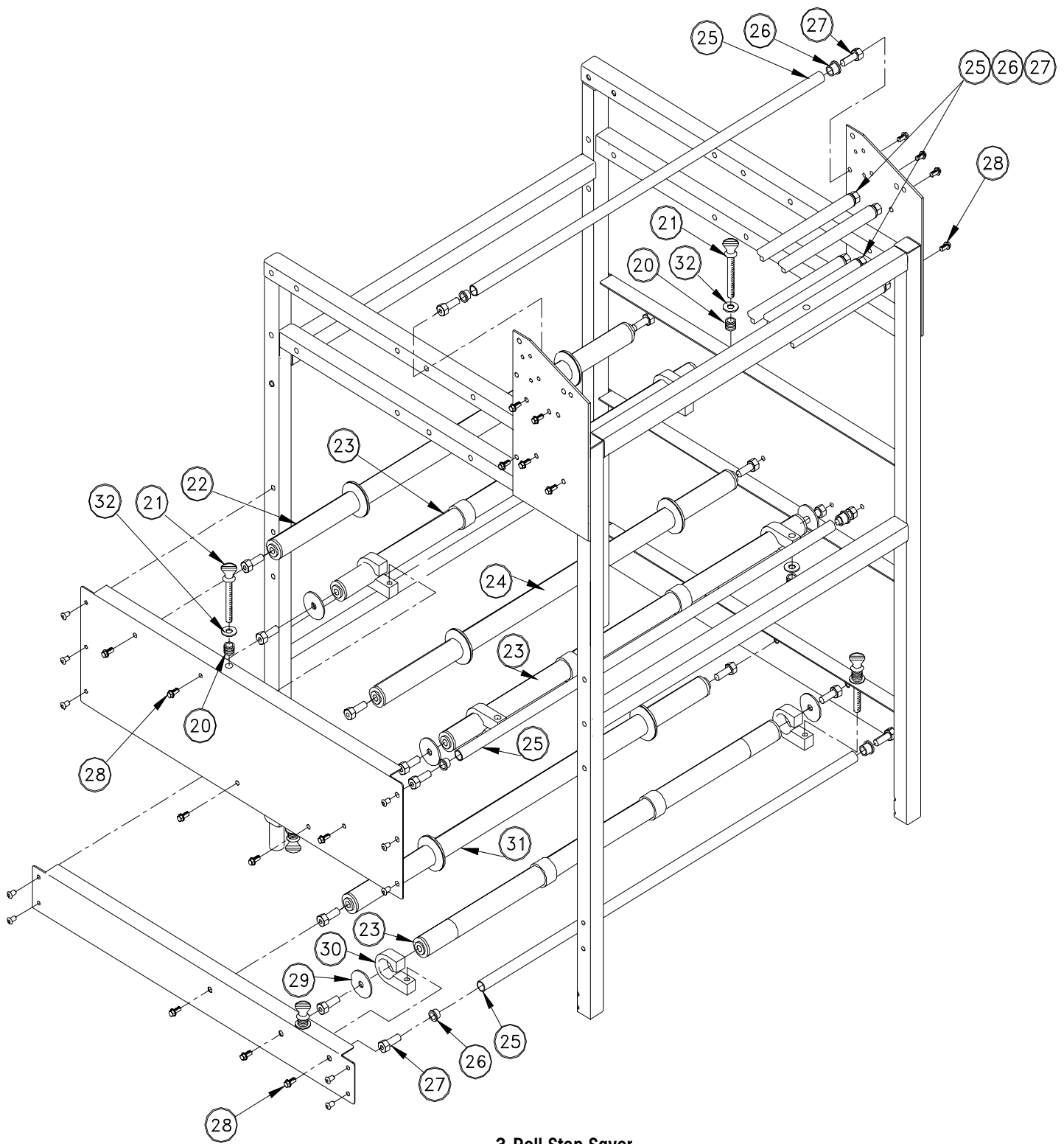
Parts List for 2-Roll Step Saver

ITEM	QTY.	DESCRIPTION	PART NUMBER
1	1	ASSY,0662 FRAME	16484000A
2	1	ANGLE COVER	81879100A
3	3	FILM STOP MOUNTING SPRING	A81124500A
4	1	FILM LEAF - TOP	81878000A
5	2	NUT, 1/4-20 HEX JAM	R0236900A
6	2	WASHER, LOCK	R0233400A
7	2	SCREW 1/4-20X1/2" HEX HEAD CAP	R0311000A
8	34	RIVET,POP,ST.STEEL	81868000A
10	2	FILM SHELF	81878100A
11	2	STOP - MIDDLE FILM	81880600A
18	4	BRAKE SPRING	81868100A
19	4	BRAKE THUMB SCREW	81868200A
20	1	ROLLER & GROMMET ASSEMBLY 15"	81923900A
21	2	FILM SUPPORT ROLL W/SLEEVE	82451400A
22	1	ROLLER AND GROMMET ASSEMBLY 18"	81924000A
23	5	ROLLER 5/8" DIA. X 22-9/32" LG.	82138700A
24	10	FLANGE BEARING	A80190400A
25	18	MOUNTING STUD	82130000A
26	21	SCREW 10-32X3/8" HEX WASHER HEAD	A81160600A
27	4	BRAKE RETAINING WASHER	82138100A
28	4	BRAKE RETAINING	81832200A
29	4	WASHER 5/16 FLAT	R0234300A
30	1	COVER	81981300A
31	1	DUPLEX RECEPTICAL	81981200A
32	1	RECEPTICAL BOX ASSB	A82473900A
33	3	PLASTIC CABLE CLAMP	81531600A
34	1	ROD COVER FILM	A81870500A
35	1	FILM RETAINING TUBE & SHAFT ASSEM.	A80319300A
36	1	SUPPORT - LOW TEMP. ROD RH	81835900A
37	1	SQUARE HEATER 1/2" X 22.75" LONG	16275700A
38	2	LABEL - HOT ARROW	81876200A
40	2	LABEL - CAUTION DISCONNECT	81921300A
41	1	COVER - CONTROL BOX	82351700A
42	2	SCREW #8-32X1/4" HEX WASHER HEAD	R0235200A
43	1	LABEL - ETL	82844700A
44	1	CARTON, SHIPPING	16157600A
45	1	LABEL, DATA, BLANK, 1 x 4.13	14800000A
46	2	SCREW 5/16-18 X 1-3/4" HEX HD CAP	R0397500A
47	1	LABEL - CAUTION HOT	12021200A
48	1	SUPPORT - LOW TEMP ROD LH	81835800A
49	1	SEALER PLATE ASSEM.	A82563700A
50	1	HEYCO CONNECTOR 90°	A80796600A
51	2	WASHER 5/16 LOCK	R0233500A
52	2	1/4" I.D. SET COLLAR	81895700A
53	22	PLUG,0.281 HOLE	81888700A
55	1	NUT, 10-32 HEX SST	R0342000A
56	1	SHIELD,LABEL,1.09 x 4.49	14801800A
57	1	LABEL - RECEPTICLE RATING	82475800A
58	1	TY WRAP	81253900A
59	1	FILM THREADING DIAGRAM	82464600A
60	1	LABEL-WARNING TURN POWER SWITCH	82988500A
61	3	RIVET, POP, 3/16, GRIP.125-.250	81861100A
62	1	MANUAL, USERS GUIDE	15336600A
63	1	SWITCH, ON/OFF	A82351600A
66	1	NUT, ELECT LOCK, 1/2"	A80077800A
67	1	CLAMP, PLASTIC	82221400A

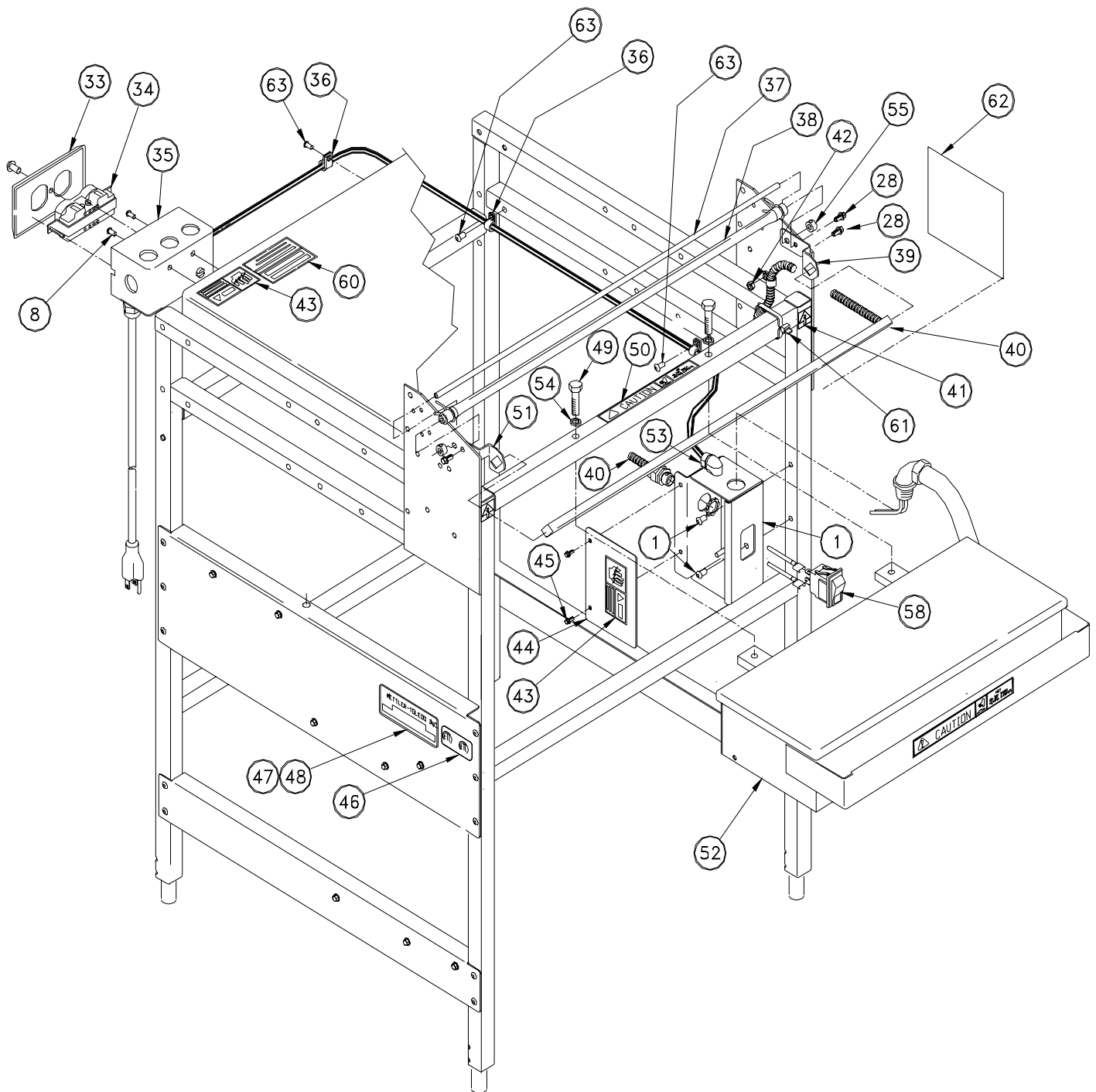
3-Roll Step Saver



3-Roll Step Saver



3-Roll Step Saver



3-Roll Step Saver

Parts List for 3-Roll Step Saver

ITEM	QTY.	DESCRIPTION	PART NUMBER
1	1	ASSY,0662 FRAME	16484000A
2	1	ANGLE COVER	81879100A
3	4	FILM STOP MOUNTING SPRING	A81124500A
4	1	FILM LEAF - TOP	81878000A
5	2	NUT 1/4-20 HEX	R0236900A
6	2	WASHER 1/4" LOCK	R0233400A
7	2	SCREW 1/4-20X1/2" HEX HEAD CAP	R0311000A
8	42	STAINLESS STEEL POP RIVET	81868000A
10	2	FILM SHELF	81878100A
11	2	STOP - MIDDLE FILM	81880600A
13	1	PLATE - RH LOWER ROLLER SUPPORT	82343800A
16	1	PLATE - LH LOWER ROLLER SUPPORT	82343700A
20	6	BRAKE SPRING	81868100A
21	6	BRAKE THUMB SCREW	81868200A
22	1	ROLLER & GROMMET ASSEMBLY 18"	81924000A
23	3	FILM SUPPORT ROLL W/SLEEVE	82451400A
24	1	ROLLER AND GROMMET ASSEMBLY 15"	81923900A
25	8	ROLLER 5/8" DIA. X 22-9/32" LG.	82138700A
26	16	FLANGE BEARING	A80190400A
27	28	MOUNTING STUD	82130000A
28	29	SCREW 10-32X3/8" HEX WASHER HEAD	A81160600A
29	6	BRAKE RETAINING WASHER	82138100A
30	6	BRAKE RETAINING	81832200A
31	1	ROLLER & GROMMET ASSEMBLY 12"	81923800A
32	6	WASHER 5/16 FLAT	R0234300A
33	1	COVER	81981300A
34	1	DUPLEX RECEPTICAL	81981200A
35	1	RECEPTICAL BOX ASSB	A82473900A
36	4	PLASTIC CABLE CLAMP	81531600A
37	1	ROD COVER FILM	A81870500A
38	1	FILM RETAINING TUBE & SHAFT ASSEM.	A80319300A
39	1	SUPPORT - LOW TEMP. ROD RH	81835900A
40	1	ASSY,HEATER WIRING,0661,0662	16275700A
41	2	LABEL - HOT ARROW	81876200A
42	1	NUT, 10-32 HEX SST	R0342000A
43	2	LABEL - CAUTION DISCONNECT	81921300A
44	1	COVER - CONTROL BOX	82351700A
45	2	SCREW #8-32X1/4" HEX WASHER HEAD	R0235200A
46	1	LABEL - ETL	82844700A
47	1	SHIELD,LABEL,1.09 x 4.49	14801800A
48	1	LABEL, DATA, BLANK, 1 x 4.13	14800000A
49	2	SCREW 5/16-18 X 1-3/4" HEX HD CAP	R0397500A
50	2	LABEL - CAUTION HOT	12021200A
51	1	SUPPORT - LOW TEMP ROD LH	81835800A
52	1	SEALER PLATE ASSEM.	A82563700A
53	1	HEYCO CONNECTOR 90°	A80796600A
54	2	WASHER 5/16 LOCK	R0233500A
55	1	1/4" I.D. SET COLLAR	81895700A
56	22	PLUG,0.281 HOLE	81888700A
58	1	SWITCH, ON/OFF	A82351600A
60	1	LABEL - RECEPTICLE RATING	82475800A
61	1	TY WRAP	81253900A
62	1	FILM THREADING DIAGRAM	81877800A
63	3	RIVET,POP 3/16, GRIP .125-.250	81868000A

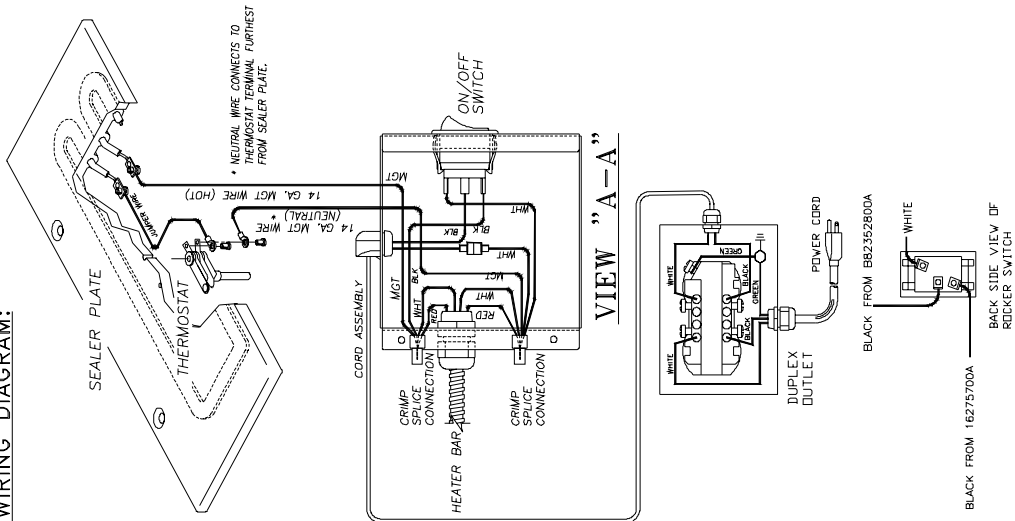
Heater Bar Kit,
16473600A

ITEM	QTY.	DESCRIPTION	PART NUMBER
1	1	HEATER BAR ASSEMBLY	16275700A
2	1	CORD ASSEMBLY	B82352800A
3	1	CLAMP, PLASTIC CABLE	82221400A
4	1	SCREW, 10-32 x 3/8 HEX WASHER HD.	A81160600A
5	1	NUT, 10-32 HEX SST	R0342000A
6	1	CARTON, 21.63x13.5x3	14112200A
7	1	CORD GRIP, RT. ANGLE	A80796600A
8	1	GUARD, THERMOSTAT	16521300A

* * *

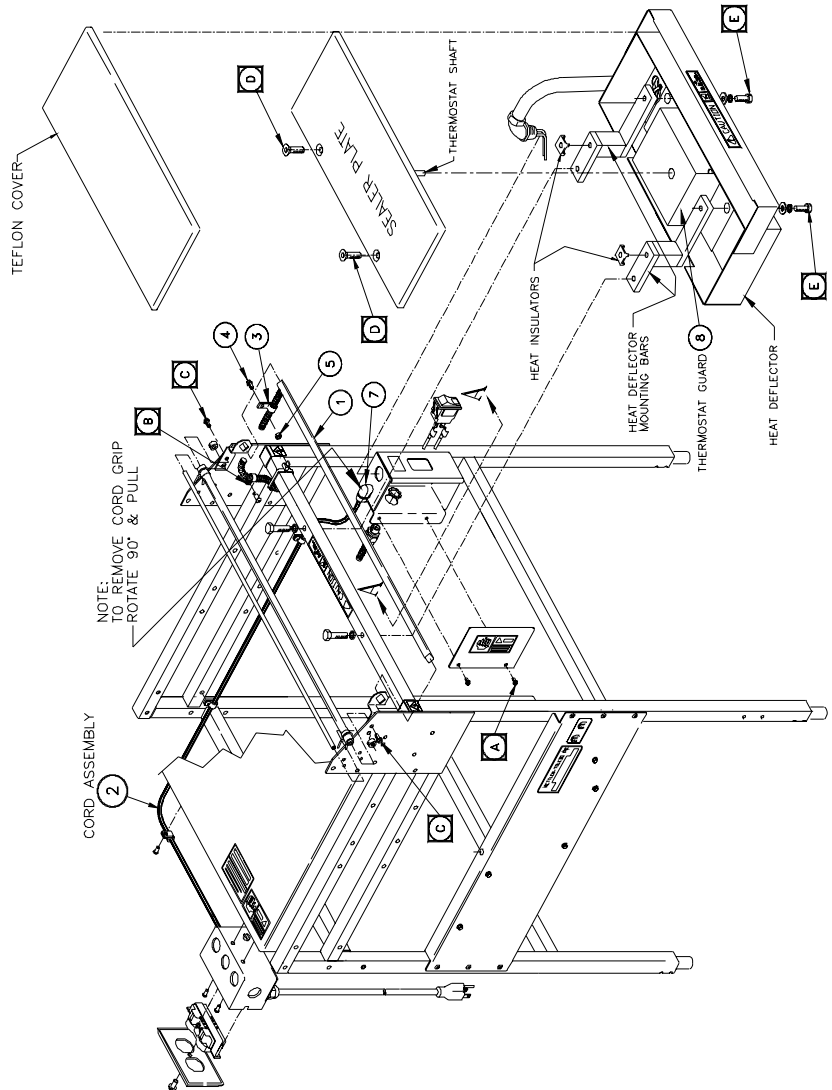
- NOTES:
1. PUT (1) PRINT OF THIS DRAWING 16473400A INTO CARTON PRIOR TO SHIPPING.
 - * 2. ASSEMBLE ITEMS #3, 4, & 5 TO HEATER CABLE AS SHOWN.

WIRING DIAGRAM:

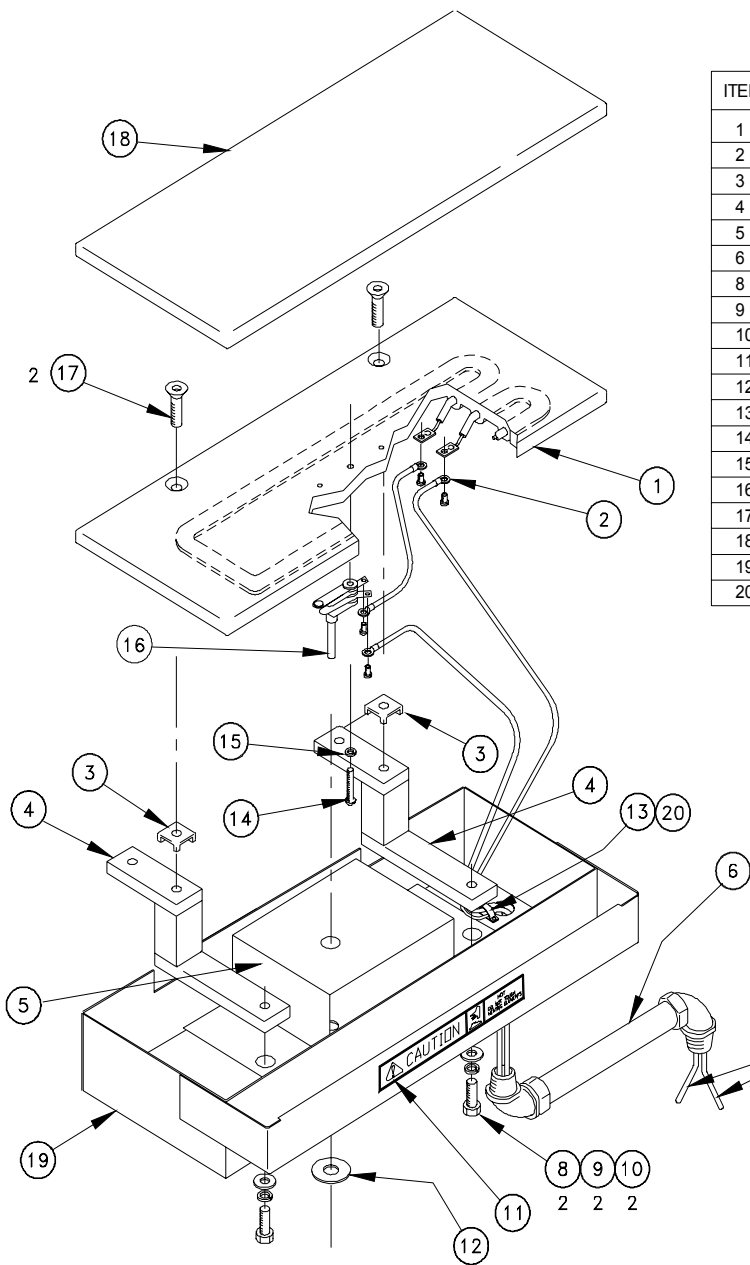


INSTALLATION INSTRUCTIONS:

1. UNPLUG UNIT.
2. REMOVE TEFLON COVER FROM SEALER PLATE.
3. REMOVE JUNCTION BOX COVER BY REMOVING (2) "A" SCREWS.
4. DRILL OUT RIVET "B" TO REMOVE CABLE CLAMP.
5. REMOVE (2) "C" SCREWS, ROTATE EXISTING HEATER BAR UP 90°, DISCONNECT WIRES AND REMOVE HEATER BAR AND DISCARD.
6. REMOVE (2) "D" SCREWS FROM SEALER PLATE & TIP UP 90°, DISCONNECT WIRES TO SEALER PLATE AND DISCARD.
7. INSTALL NEW HEATER BAR (ITEM #1), RUNNING FLEX CABLE INTO "J" BOX. THEN RUN WIRES WITH RING TERMINALS THROUGH SEALTITE AND CONNECT TO SEALER PLATE AS SHOWN IN VIEW "A-A".
8. REMOVE (2) "E" SCREWS AND TIP HEAT DEFLECTOR DOWN. INSTALL THERMOSTAT GUARD, ITEM #8, BETWEEN THE HEAT DEFLECTOR MOUNTING BARS AS SHOWN. REASSEMBLE "E" SCREWS, JUST DRAWING UP THE HEAT DEFLECTOR BUT LEAVING THEM LOOSE ENOUGH TO MOVE THE THERMOSTAT GUARD FOR NOW.
9. REASSEMBLE SEALER PLATE MAKING SURE THE HEAT INSULATORS ARE INSTALLED AS SHOWN. GUIDE THE THERMOSTAT SHAFT AND COLLAR THROUGH THE HOLE IN THE THERMOSTAT GUARD AS YOU ALIGN THE SEALER PLATE HOLES WITH THE MOUNTING HOLES FOR THE "D" SCREWS, SHIFTING THE THERMOSTAT GUARD AS NECESSARY. TIGHTEN THE "D" SCREWS. CHECK THAT THE SHAFT AND COLLAR ENGAGE THE THERMOSTAT GUARD AND TIGHTEN THE "E" SCREWS. BE CAREFUL NOT TO PINCH ANY WIRES.
10. DISCONNECT EXISTING LINE CORD SET BY ROTATING CORD GRIP 90° AND PULLING, AND THEN REMOVE BY SLIDING THROUGH THE CABLE CLAMPS. INSTALL NEW LINE CORD SET BY SLIDING IT BACK THROUGH THE CABLE CLAMPS.
11. RECONNECT REMAINING WIRING USING NEW PARTS PER VIEW "A-A".
12. REASSEMBLE UNIT AS SHOWN.

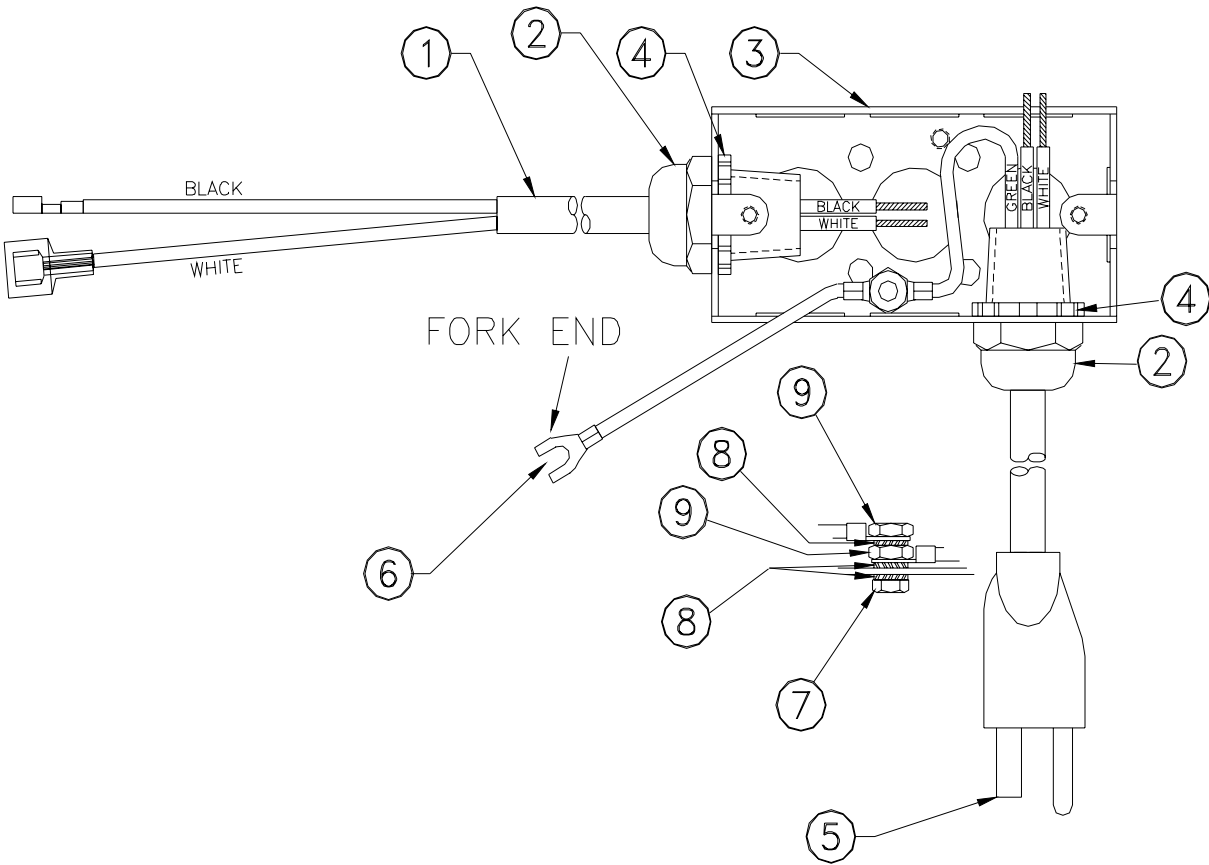


Sealing Plate



ITEM	QTY.	DESCRIPTION	PART NUMBER
1	1	SEALING PLATE	A81873100A
2	1	JUMPER WIRE	81922100A
3	2	ISOLATOR - HEAT	81923200A
4	2	HEAT DEFLECTOR MOUNTING BAR	82563600A
5	1	GUARD, THERMOSTAT	16521300A
6	1	ASSY,WIRE CONDUIT,3.75 LG	16188300A
8	2	SCREW 5/16-18 X 3/4" HEX.HD. CAP	R0364100A
9	2	WASHER5/16 LOCK	R0233500A
10	2	WASHER5/16 FLAT	R0234300A
11	1	CAUTION HOT LABEL	12021200A
12	1	THERMOSTAT LABEL	81871500A
13	1	CLIP	A80854300A
14	1	SCREW #8-32X7/8" RND. HD. MACH.	R0332100A
15	1	WASHER#8 LOCK	R0282800A
16	1	THERMOSTAT	82138900A
17	2	SCREW 5/16-18X1" FLAT SOCKET HD.	R0369400A
18	1	6 X 15 TEFLON COVER	A80280000A
19	1	HEAT DEFLECTOR	82544900A
20	1	RIVET, POP, ST. STEEL	81868000A

Receptacle Box



ITEM	QTY	DESCRIPTION	PART NO.
1	1	CORD ASSB-REC. BOX TO SWITCH BOX	B82352800A
2	2	GRIP-STRAIGHT CORD	A82474600A
3	1	BOX-662 RECEPTICLE	A82139100A
4	2	NUT-ELECTRIC	A80077800A
5	1	CORD ASSEMBLY	82007600A
6	1	ASSY,GROUND WIRE,0623	16499000A
7	1	SCREW-#10-32 x 1/2 HEX HD	R0296300A
8	3	WASHER-#10 EXTERNAL TOOTH	R0254500A
9	2	NUT-#10-32 HEX	R0342000A



For your notes

9

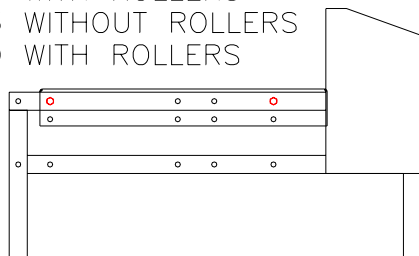
Accessories

This chapter covers optional accessories for the Model 662. Carefully check your part numbers before ordering.

Scale Platform Positions

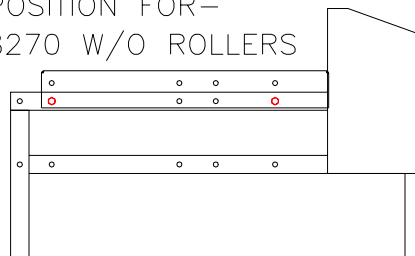
POSITION FOR—

8213 WITH ROLLERS
8213 WITHOUT ROLLERS
8270 WITH ROLLERS



POSITION FOR—

8270 W/O ROLLERS



8-inch Extension Conveyor 0925-0385

1/4-20 X 3/4" CAP SCREW
& FLAT WASHER — 2 REQ'D

1/8 to 1/4 ON 8270 SCALE

SCALE
PLATTER
ROLLERS

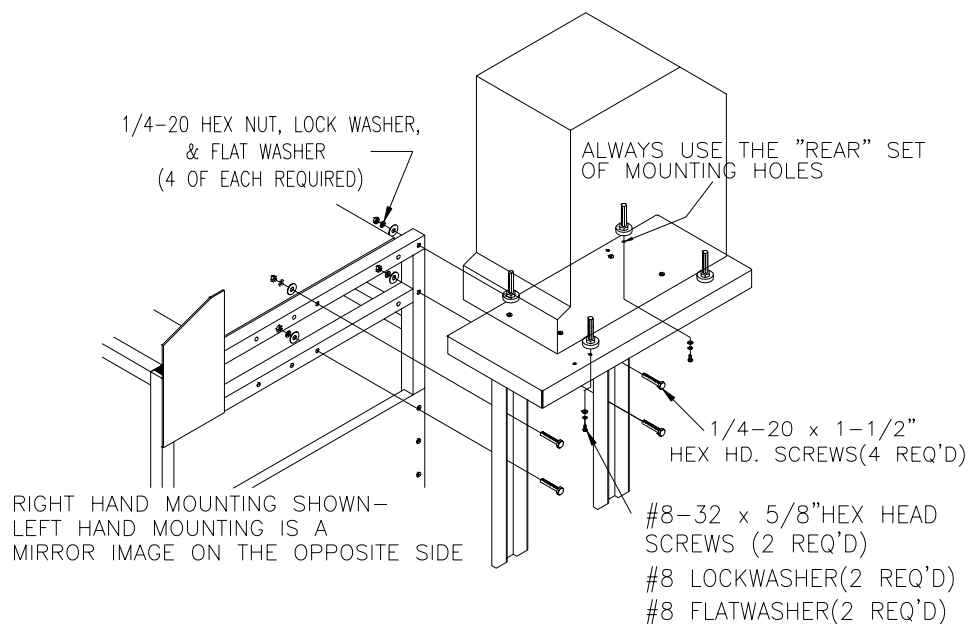
1.250

SCREW IN 8213
LEGS AS FAR
AS POSSIBLE

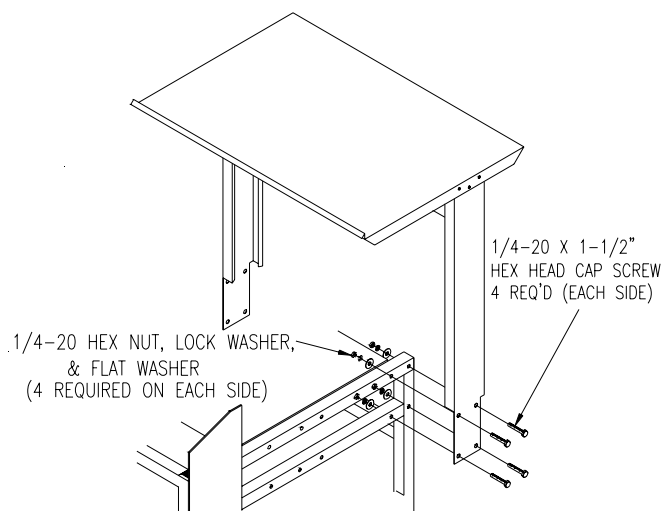
1/4-20 x 1-1/2" CAP SCREWS
& FLAT WASHER — 3 REQ'D

1/4-20 HEX NUT, LOCK WASHER,
& FLAT WASHER (3 OF EACH REQ'D)

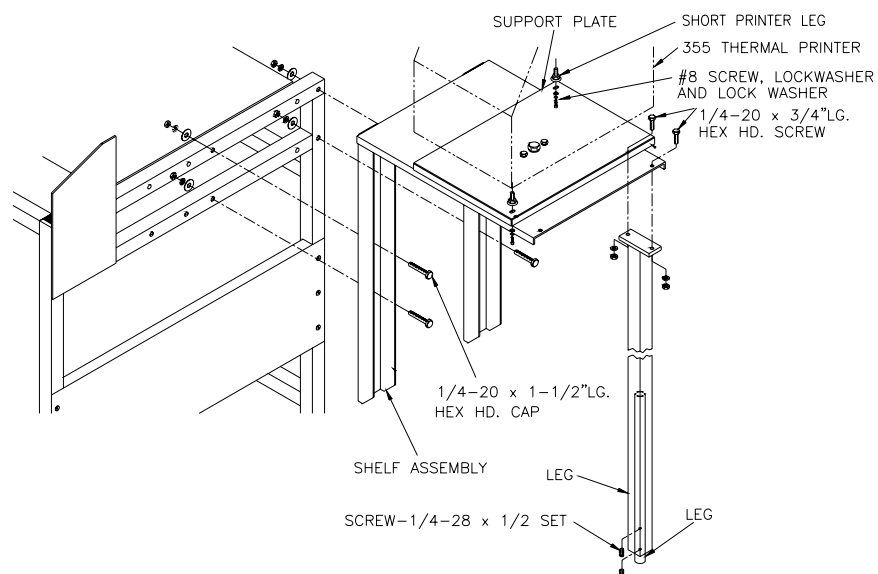
Printer Shelf for 317 0925-0352



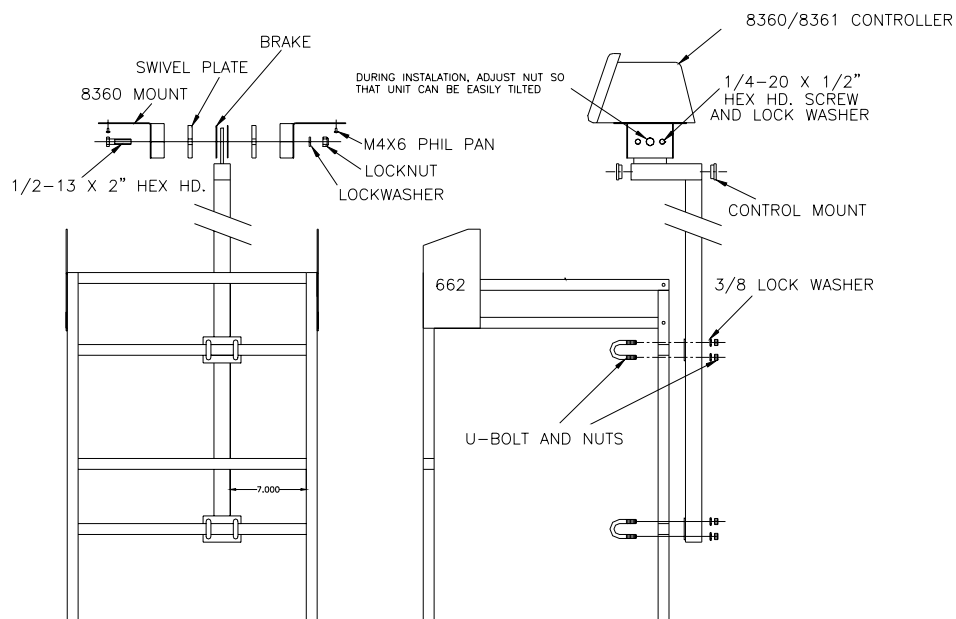
Center Shelf for Scale Controller 0925-0353



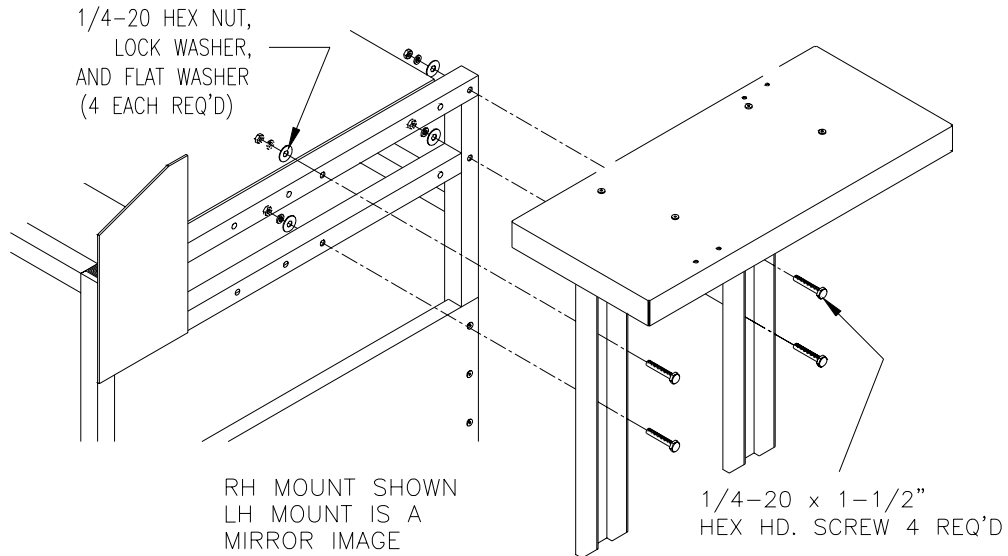
Swivel Shelf for Model 355 0925-0388



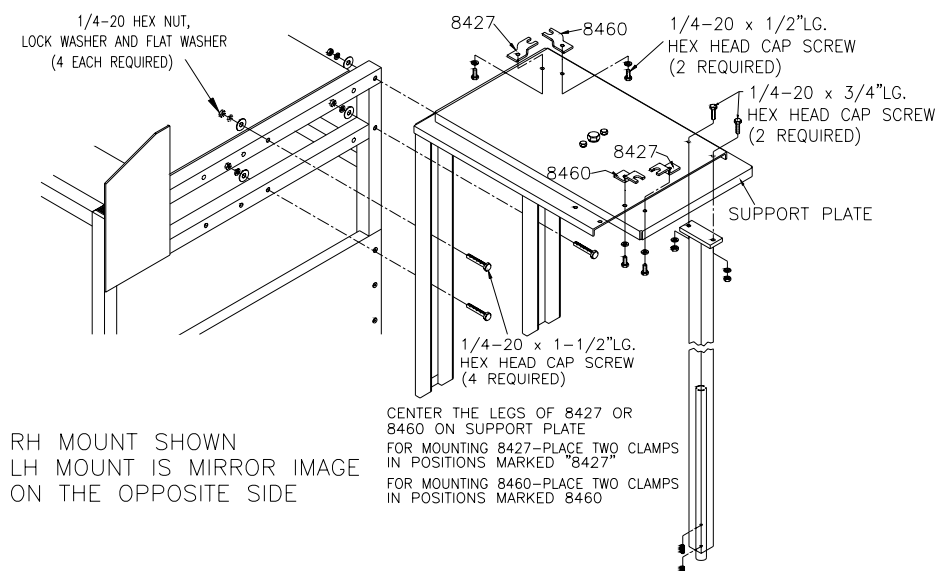
Post W/Tilt for Model 8360/8361 0925-0345



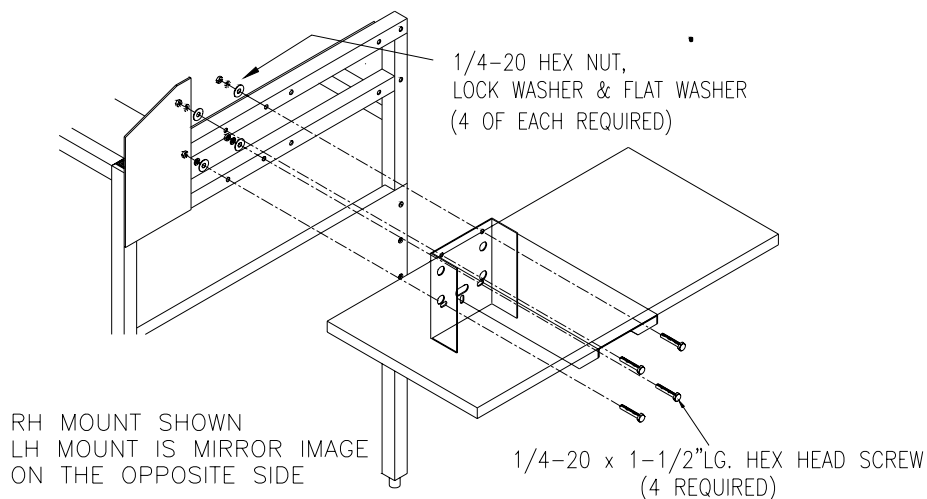
Shelf For Model 8305/8422/8423 0925-0354



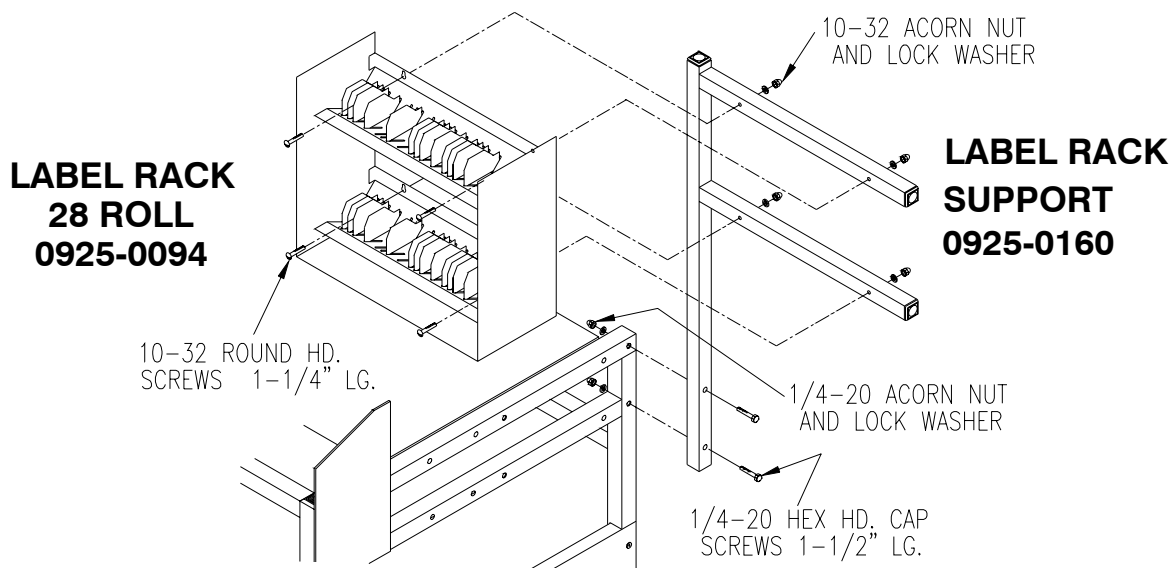
Swivel Shelf For Model 8450/8460/8461 0925-0322



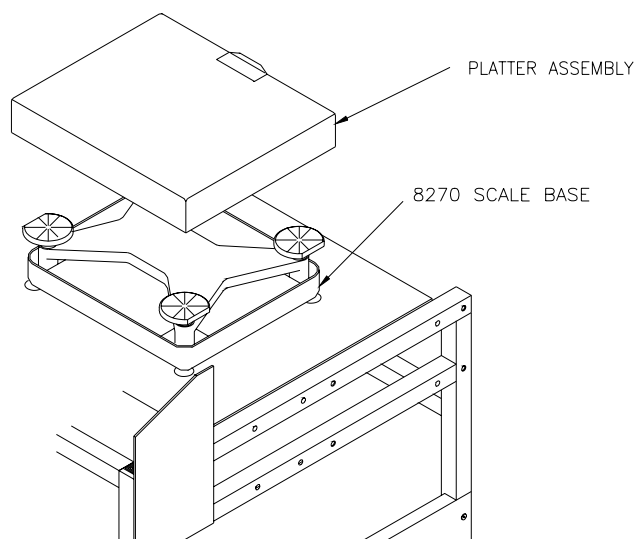
Platter Shelf 0925-0137



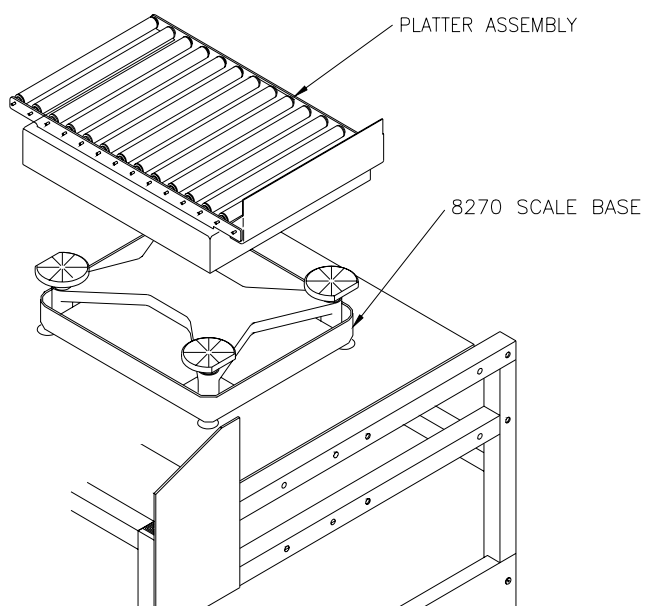
Label Rack 0925-0094 and Label Rack Support 0925-0160



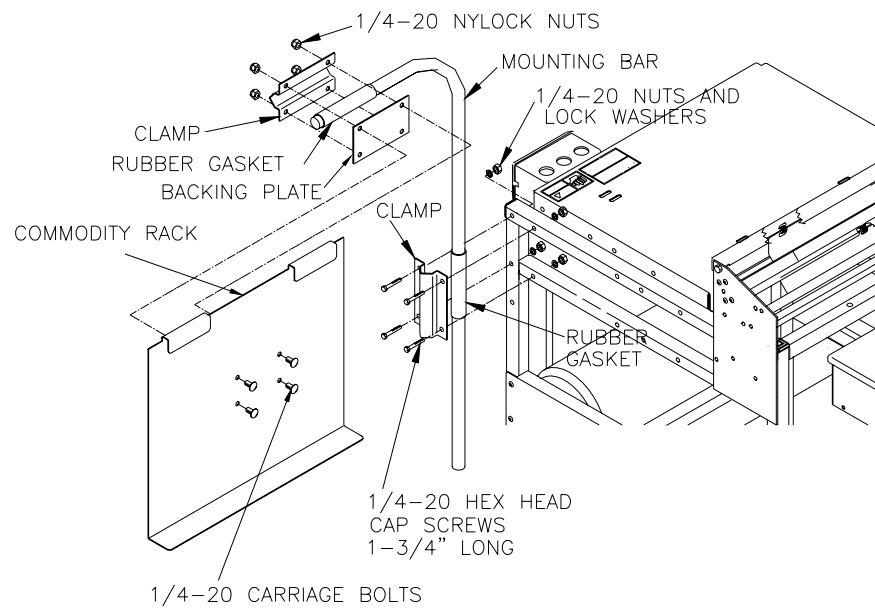
Model 8270 Platter W/O Rollers 0925-0348



Model 8270 Platter W/Rollers 0925-0383

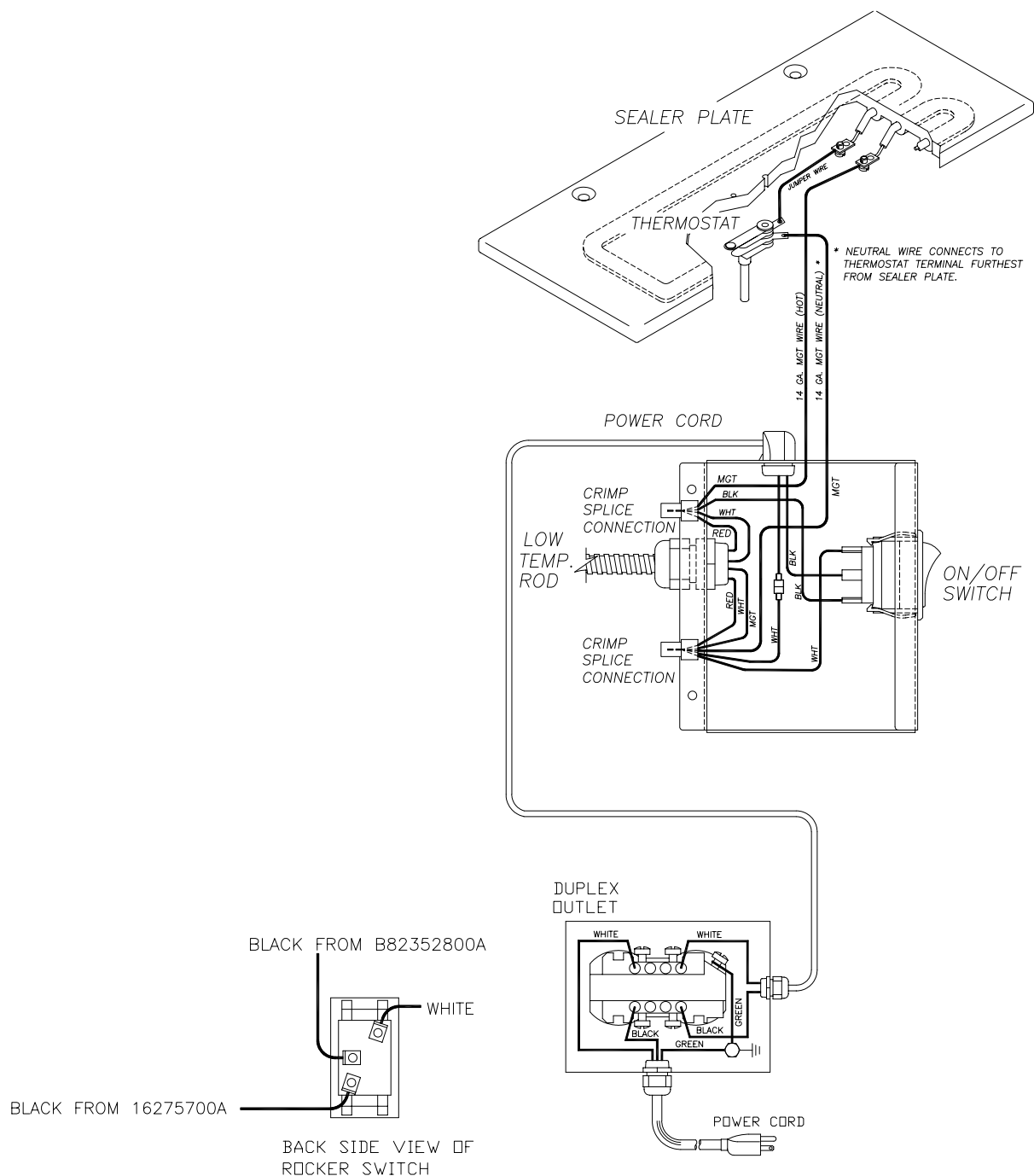


Commodity Rack 0925-0404



10

Wiring Diagram



	<p>⚠ WARNING</p> <p>DISCONNECT ALL POWER TO THIS UNIT BEFORE INSTALLING, SERVICING, CLEANING, OR REMOVING THE FUSE. FAILURE TO DO SO COULD RESULT IN BODILY HARM AND/OR PROPERTY DAMAGE.</p>
--	--



For your notes



Mettler-Toledo, Inc.

1900 Polaris Parkway
Columbus, Ohio 43240
www.mt.com

P/N: 15516700A

(7/02).00

METTLER TOLEDO® and Step Saver™ are Trademarks of Mettler-Toledo, Inc.

©2002 Mettler-Toledo, Inc.

Printed in U.S.A.



A15516700A