

## REPLACEMENT PARTS

### 1 EXTERNAL PARTS (Figure 9.1)

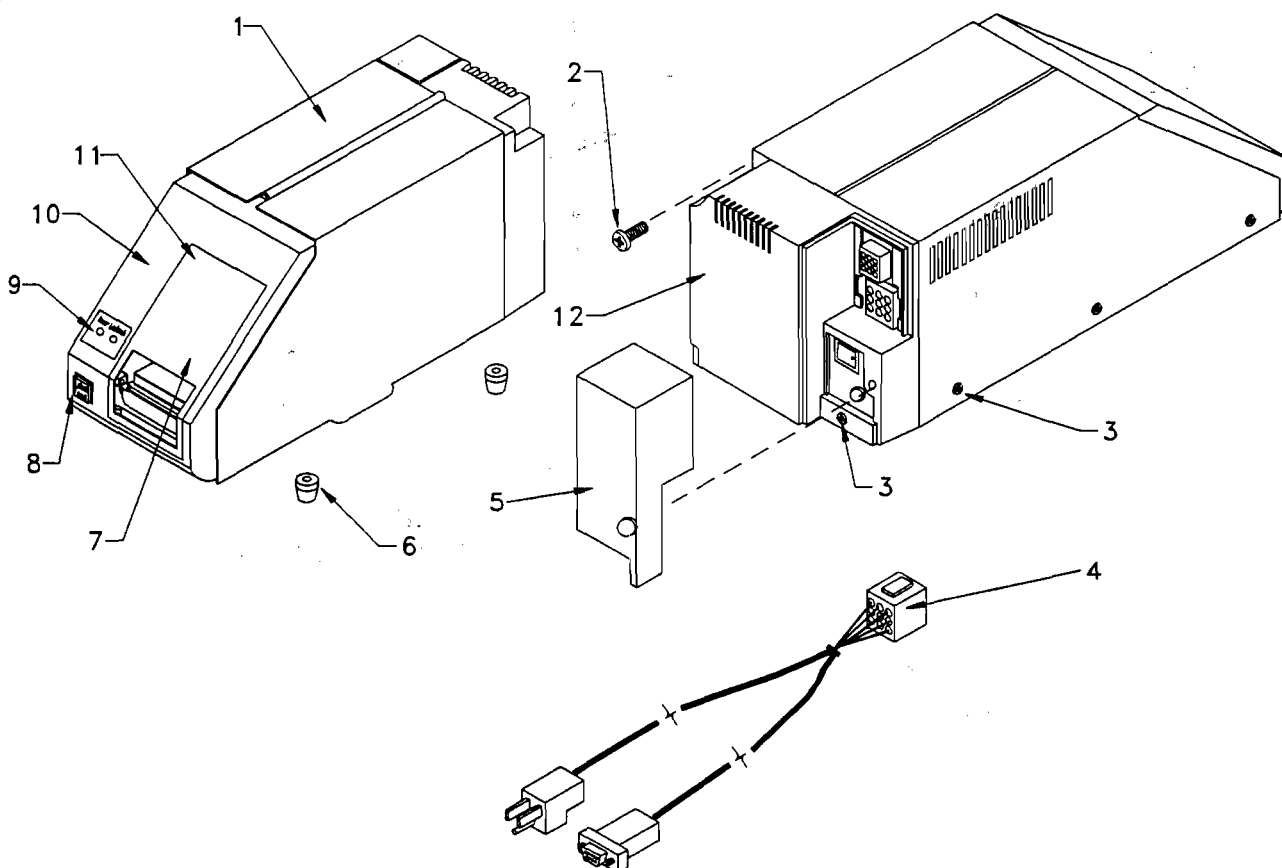
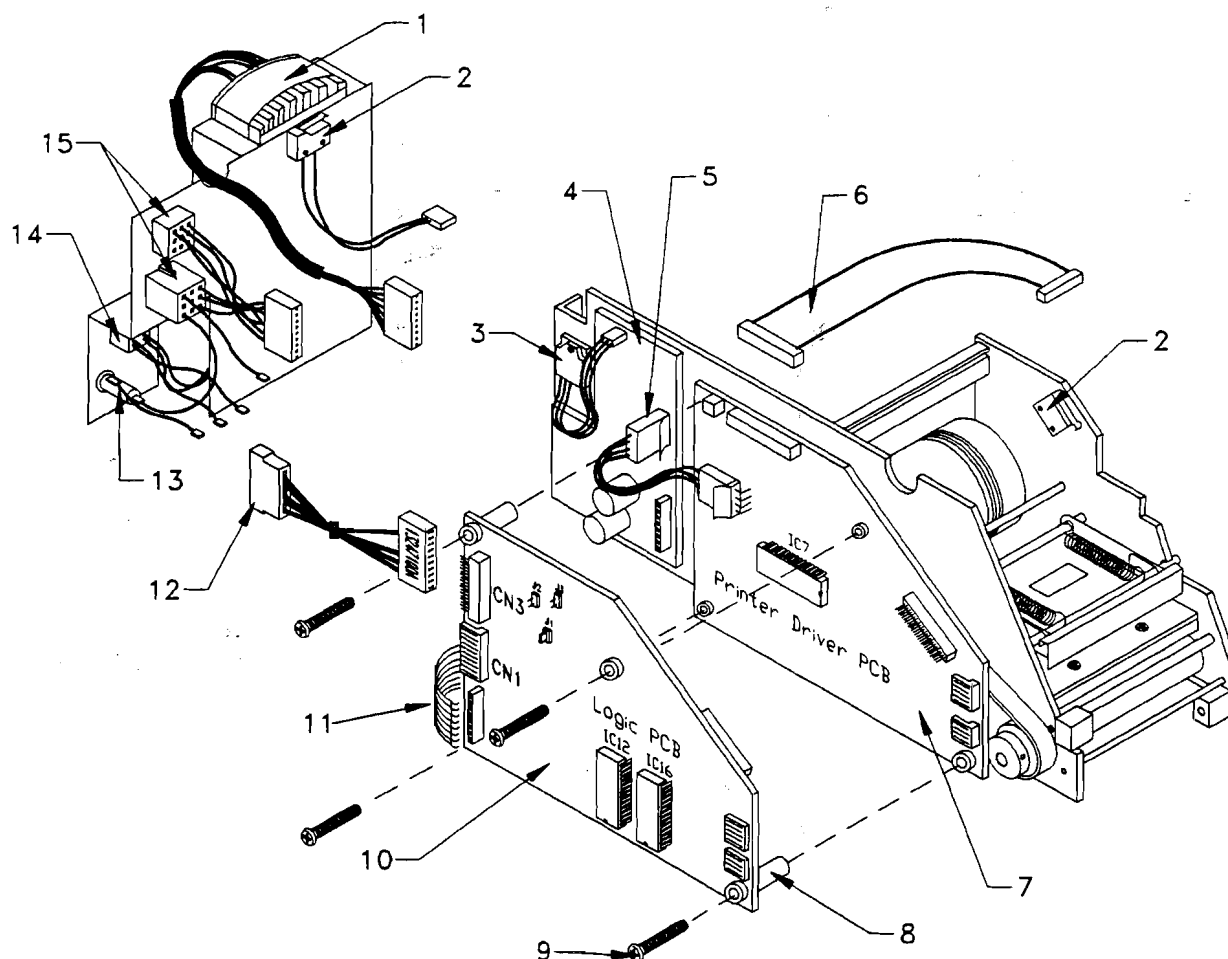


Figure 9.1 - External Parts

REF #	PART NUMBER	DESCRIPTION	QTY
1	12953200A	Top Cover Assembly	1
2	R0375000A	Screw, Rear Cover	2
3	R0376300A	Screw, Cover	5
4	12951700A	Cable, 8423 to 325 (0900-0235)	1
5	12804700A	Rear Cover Assembly, Removable (w/thumbscrew)	1
6	12952900A	Rubber Foot	4
7	12802500A	Front Removable Cover	1
8	A12803200A	Label Feed Switch Assembly	1
9	12802600A	LED Harness Assembly	1
10	12953100A	Front Cover	1
11	R0377300A	(Not Shown) Front Cover Screw M3x8 PH	2
12	12953300A	Rear Cover	1

## 9.2 ELECTRICAL PARTS (Figure 9.2)



REF #	PART NUMBER	DESCRIPTION	QTY
1	12804300A 13086800A 13086900A	Transformer Assembly, 120 VAC Transformer Assembly, 220 VAC Transformer Assembly, 240 VAC	1
2	12954300A	Switch, Interlock	2
3	12803700A	Voltage Regulator Assembly	1
4	A12802400A	PCB, Power Supply	1
5	12804100A	Harness, Power Supply to Printer Driver PCB	1
6	12802100A	Harness, Printhead	1
7	A12802200A	PCB, Printer Driver	1
8	12891900A	Standoff, PCB	4
9	R0376500A	Screw	4
10	12802300A 14029600A	Logic PCB, Old Style (two EPROM's) Logic PCB, New Style (single EPROM)	2
11	12804200A	Harness, Power Supply to Logic PCB	1
12	13247100A	Harness, Extra Text/DayGlo/Floral Adapter	1
13	12953000A 12803100A	Fuse Holder Fuse, 2A (Not shown)	1 1
14	12805000A	Power Switch	1
15	12803900A	Harness Assembly, Communication/Power	1

### 9.3 MECHANICAL PARTS (Figure 9.3)

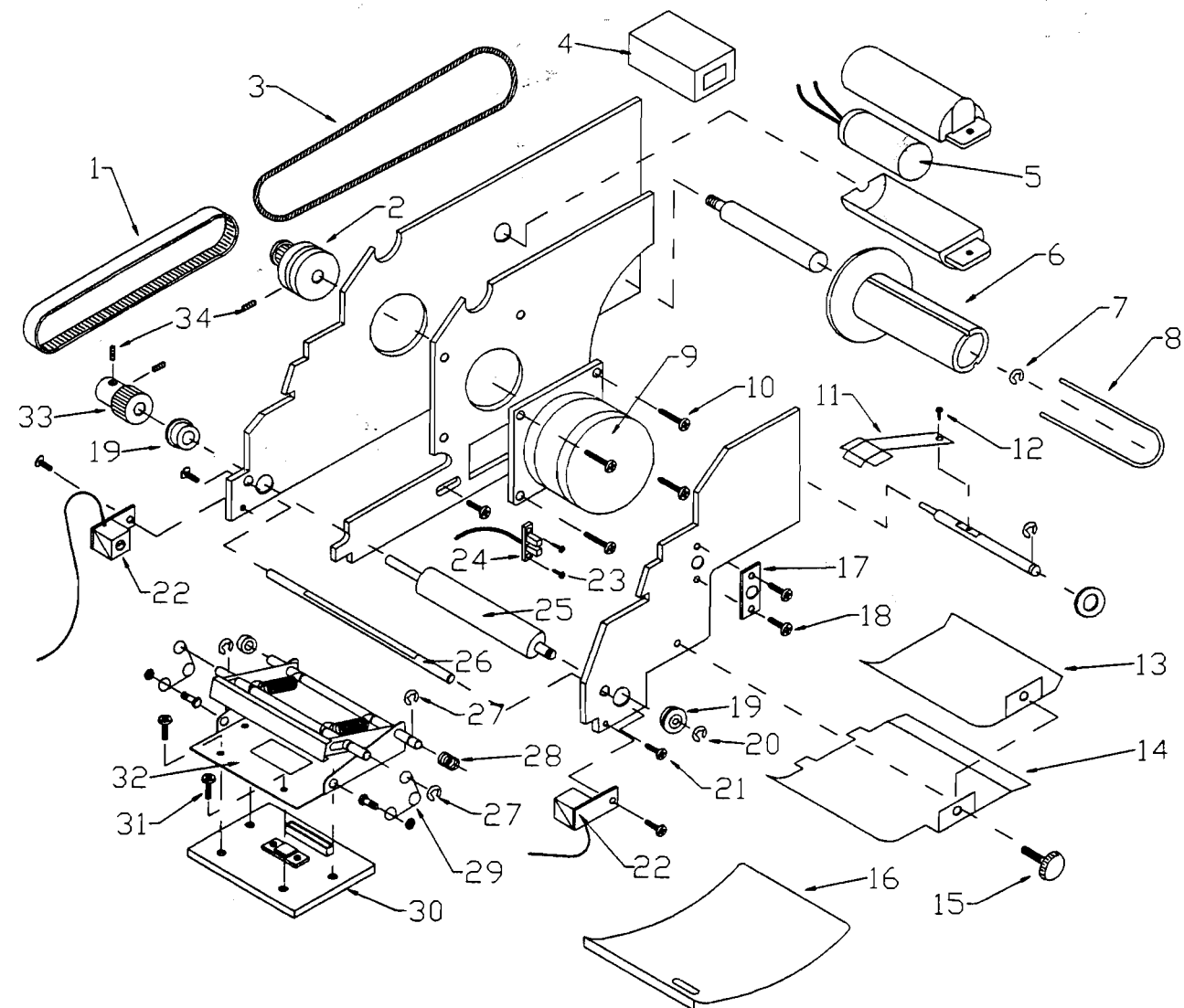


Figure 9.3 Mechanical Parts

### 9.3 MECHANICAL PARTS (Figure 9.3)

REF#	PART NUMBER	DESCRIPTION	QTY
1	12805100A	Belt, Main Drive	1
2	12928000A	Gear, Motor	1
3	A12805200A	Belt, Takeup Spool Spring	1
4	12891500A	Counter, Label (Not installed after late 1991)	1
5	12804000A	Capacitor, 10000 mfd	1
6	12954400A	Spool, Liner Take-Up	1
7	R0376000A	Snap Ring, #7	1
8	12803000A	Clip, Liner	1
9	12802700A	Motor, Stepper	1
10	R0375100A	Screw, M4 X 12	4
11	12953500A	Plate, Label Pressing Spring	1
12	R0374600A	Screw, M3 X 6	1
13	12927700A	Guide, Upper Label	1
14	12953400A	Guide, Lower Label	1
15	R0378800A	Screw, Plastic Head	1
16	12802800A	Guide, Front Label	1
17	12953600A	Plate, Retainer	1
18	R0374600A	Screw, M3 X 6	2
19	12892000A	Bearing, Printhead Roller	2
20	R0325900A	Snap Ring #4	1
21	R0375300A	Screw, M3 X 6	2
22	12802900A	Sensor Assembly, Label Taken	1
23	R0374900A	Screw, M3 X 8	2
24	12803800A	Sensor, Low Stock	1
25	12805300A	Roller, Printhead	1
26	12953800A	Stripper Bar	1
27	R0375900A	Snap Ring #4	3
28	12953700A	Spring, Tension	1
29	13800500A	Spring, Printhead Pressing (Set of Two)	1
30	12802000A	Printhead, Thermal	1
31	R0374600A	Screw, M3 X 6	4
32	12892700A	Support Assembly, Printhead (Complete Assembly)	1
33	12952200A	Gear, Printhead Roller Drive	1
34	R0375600A	Screw, Set M3 x 6	