

8525

The METTLER TOLEDO model 8525 scale indicator has a single I/O channel for data communications. This channel is used to interface to the 3015. Since there are no other I/O channels it is not possible to connect a printer to 8525 when used with a 3105.

When interfacing between the 8525 and the 3015, the 8528 must be set to the following:

Setup	41	0 - Continuous
	42	4800 Baud Preferred, 1200 possible
	43	2 - Even Parity
	44	1 - Checksum Enabled

Connection may be made in two (2) ways between the 3015 and the 8525.

1. With optional fiber optic boards used in both units, direct fiber connections can be made (max. 30 feet).
2. With optional fiber optic board in the 8525, the 8525 can be connected by fiber to the Dual Channel Fiber Optic Converter (max. 30 feet), from the converter you have a choice between RS232 or 20mA current loop.

Group 70 must be setup according to the application. Setup 71 must be "1" to enable the setpoint features.

PUMA

The METTLER TOLEDO model PUMA scale indicator has dual I/O channel capability for data communications. One channel is used to interface to the 3015. The other channel may be used interface to a printer.

When a printer is desired the channel's parameters are set to the printer requirements. The following setups are required:

Setup	COM1	COM2	
	31	51	2 - Demand Output
	32	52	1 - ASCII remote Input Enabled

The channel interfacing with the 3015 must be set to the following:

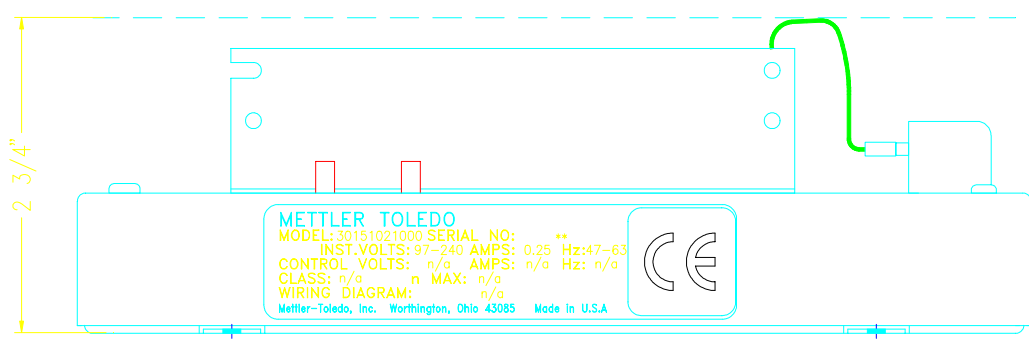
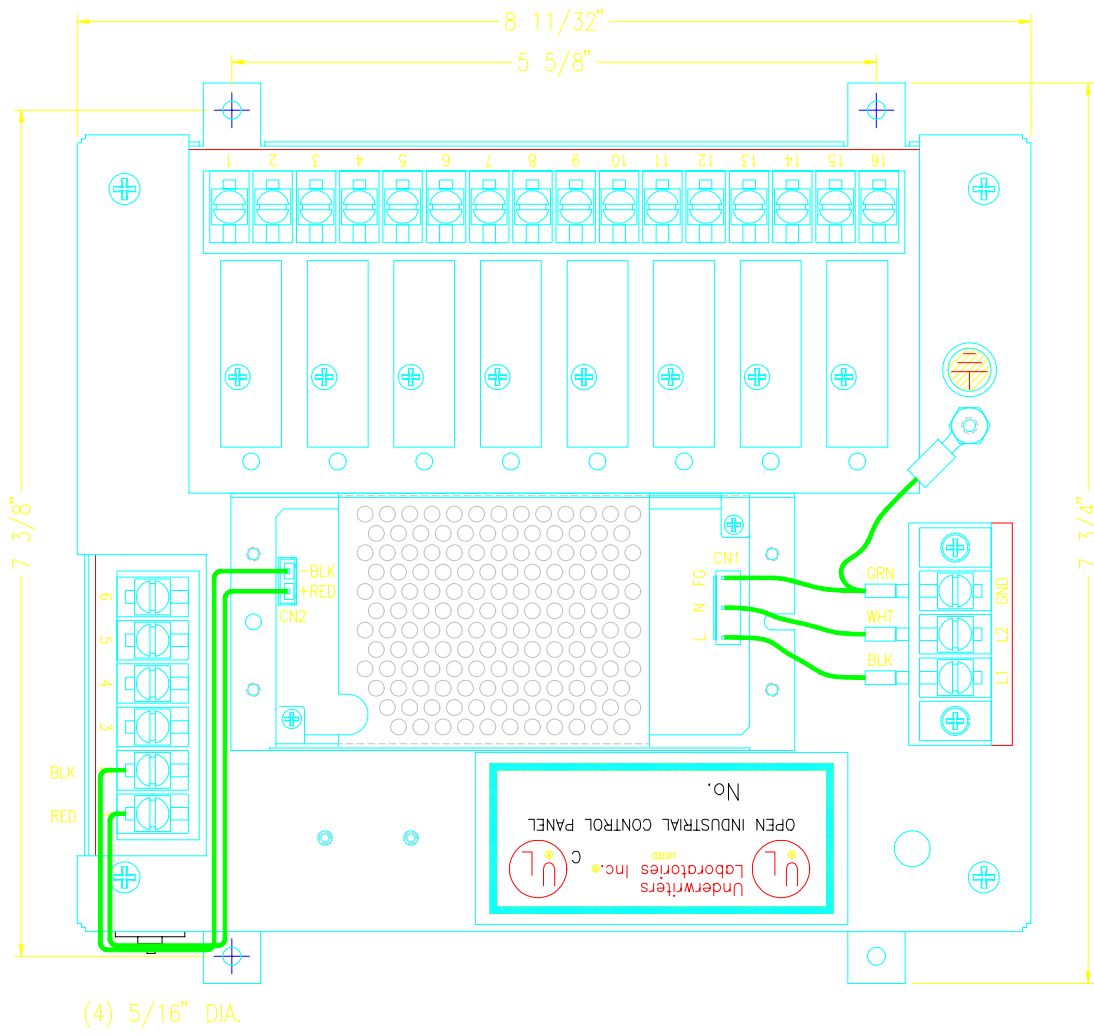
Setup	COM1	COM2	
	31	51	1 - Continuous Output
	32	52	1 - ASCII Remote Input Enabled
	33	53	4800 Baud Preferred, 300 & 1200 possible.
	34	54	2 - Even Parity
	35	55	0 - 7 data bits
	36	56	1 - Checksum Enabled

Connection may be made in two (2) ways between the 3015 and the PUMA.

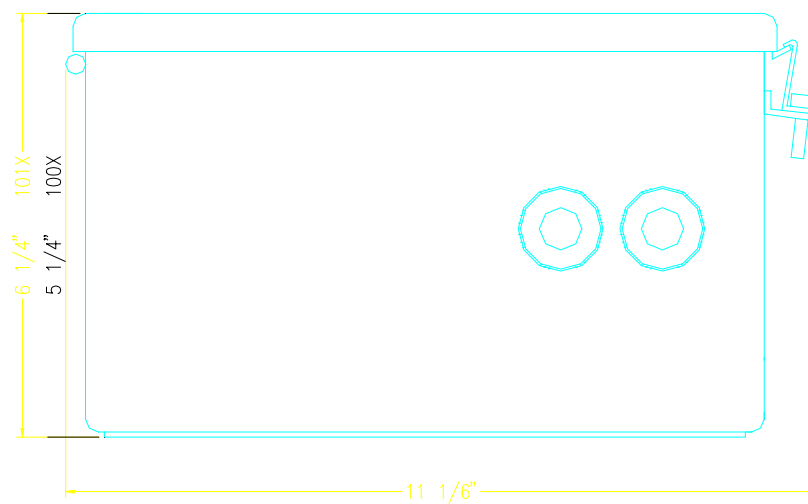
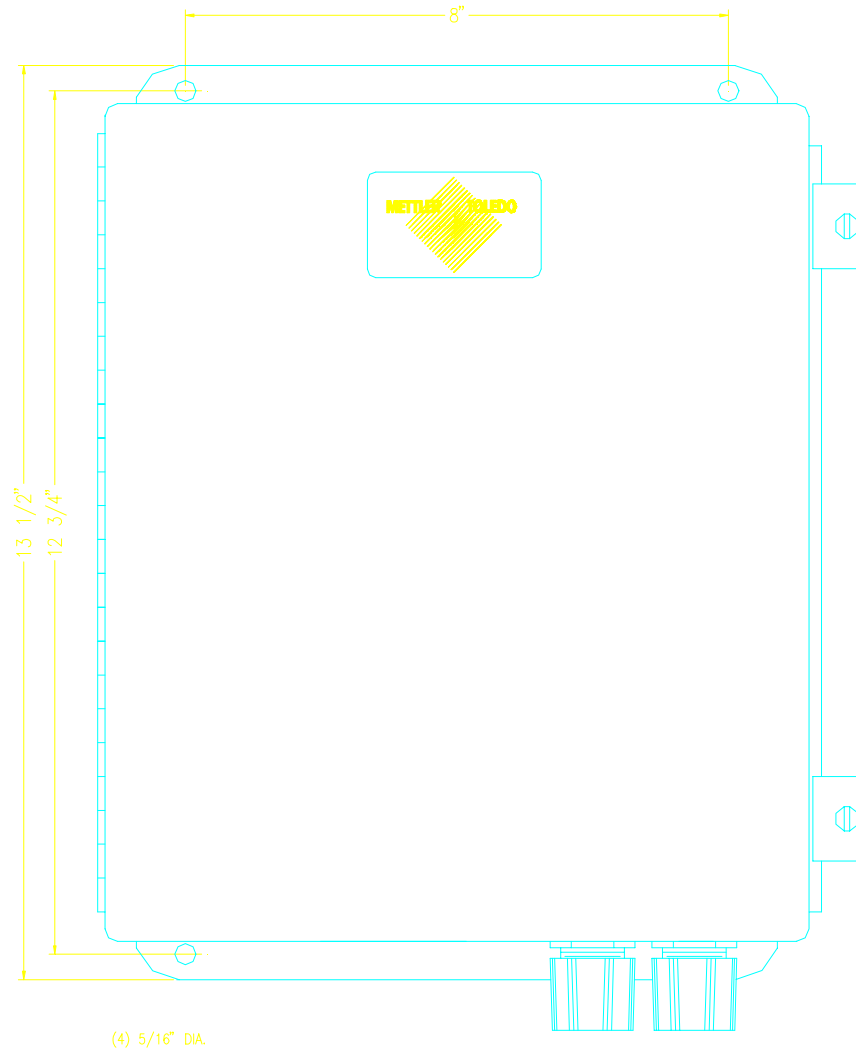
1. With optional fiber optic boards used in both units, direct fiber connections can be made (max. 300 feet).
2. With optional fiber optic board in the PUMA, the PUMA can be connected by fiber to the Dual Channel Fiber Optic Converter (max. 300 feet), from the converter you have a choice between RS232 or 20mA current loop.

Connection between the PUMA and a printer can be achieved with an optional fiber optic board in the PUMA, the PUMA can be connected by fiber to the Dual Fiber Optic Converter (max. 300 feet), RS232 from the converter to the printer.

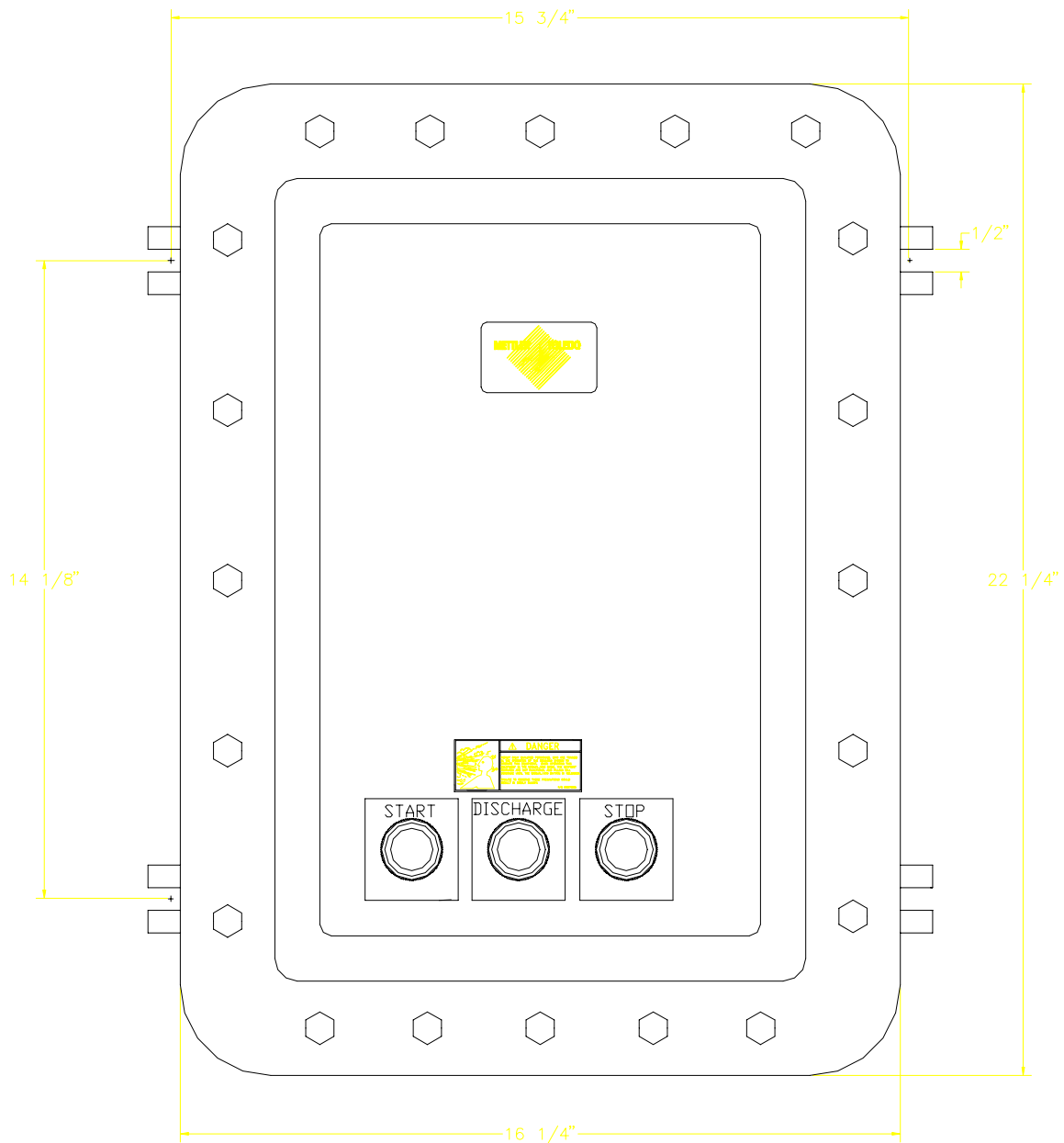
Group 80 must be setup according to the application. Setup 81 must be "1" to enable the setpoint features.



Mounting Dimensions Model 3015-1021



Mounting Dimensions for Models
 3015-1001, 3015-1002, 3015-1003, 3015-1011, 3015-1012 & 3015-1013



Depth of Enclosure: 9 1/8"

Mounting Deminsion for Model
3015-1032 & 3015-1031