

JAGXTREME™

Scale Terminal



Harness the power and flexibility  
of the Internet.

METTLER TOLEDO

# Achieve Higher Levels of Functionality and Interoperability

The JAGXTREME terminal is METTLER TOLEDO's most advanced scale terminal, designed specifically to help companies provide cost-effective, flexible methods of production while minimizing engineering time and effort. Unlike terminals that rely on proprietary technology, the internet-enabled JAGXTREME terminal incorporates industry standard connectivity to facilitate communication and data exchange with companies' control, manufacturing execution, and enterprise systems.

It is the first industrial weighing solution to integrate information, equipment life cycle management, and automation control into the manufacturing enterprise — and the only one that enables you to weigh fast, weigh powerful, and weigh cool.



The JAGXTREME terminal is configurable to provide high functionality at an economical value.

## weigh fast.

### Leading Automation Technology

With a faster processor and more memory than standard terminals, the JAGXTREME terminal is fast. But what makes it really fast — from installation to commissioning — are the benefits offered by its leading sensor technology, resident engineering tools, and open system architecture.

With its multiprocessor technology and high-speed, three-stage, digital tracking filter, TraxDSP™, the JAGXTREME terminal provides quick weight response — even while mixing or agitating on up to four simultaneous scales. The result is more accurate weights, more throughput, and more satisfaction in your weighing system.

### Open Connectivity

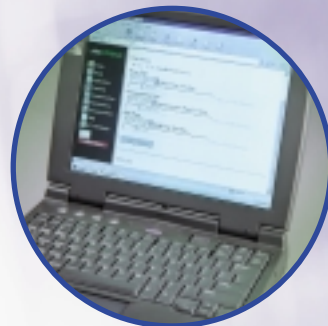
The JAGXTREME terminal offers connectivity to all METTLER TOLEDO technologies and to the leading industry technologies. Just install it, configure it, select the communication media and appropriate protocol, and start accessing valuable process signals. If you have a custom protocol or the weighing application requires special controls, use the JAGXTREME terminal's resident engineering tools, such as the JagBASIC programming language or data templates, to create it yourself.



The JAGXTREME terminal's TraxEMT™ lowers the cost of ownership by embedding a virtual METTLER TOLEDO technician into every JAGXTREME terminal.

### Alliance Solutions

By bringing together the best products and technologies through strategic alliances with other automation vendors, METTLER TOLEDO ensures that the resources necessary for the fast, smooth installation and seamless integration of your process control systems are available when you need them.



## weigh powerful.

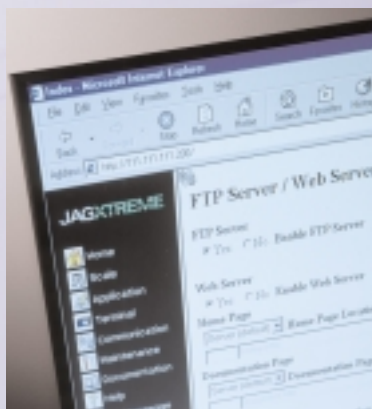
### High Performance Maintenance

The JAGXTREME terminal is the first weighing solution to employ predictive failure analysis. Using TraxEMT™, METTLER TOLEDO's exclusive Embedded Maintenance Technician, the JAGXTREME terminal can:

- Schedule and track its own maintenance
- Maintain ISO calibration compliance
- Predict failures before they occur, and alert designated individuals of potential failures or maintenance needs by email.
- Perform fault recognition and recovery when combined with METTLER TOLEDO's RAAD (Remote Addressable A/D) Box™.

### More Memory

The JAGXTREME terminal also offers more space for custom programs, data and software options. It is completely compatible with its predecessor, METTLER TOLEDO's top-selling JAGUAR terminal, so customers can easily upgrade their existing JAGUAR terminals into high performance JAGXTREME terminals.



The JAGXTREME terminal's embedded web server harnesses the power of the Internet, taking weighing and measuring to a new level.

## weigh cool.

### Global Communication

The JAGXTREME terminal bridges the islands of automation with open connectivity. Because it uses Ethernet — the leading network hardware platform, it is easy to connect to any local area network (LAN) or wide area network (WAN) and allow the sharing of information inside and outside of the enterprise.









- Surf the JAGXTREME terminal with the embedded web server and make changes to product configuration, run diagnostics, or perform maintenance via the network or through a phone using a standard modem.
- Launch JagXFILES™ to view and set up a virtual JAGXTREME terminal's configuration. Then save the file and load it into a real JAGXTREME terminal any where in the world simply by browsing with Internet Explorer.
- Receive email alerts when the terminal requires maintenance.
- Exchange valuable information from one piece of equipment to another within the same facility or between facilities thousands of miles apart.



The JAGXTREME terminal's hybrid technology connects to more scale sensors, peripherals, printers, and control systems than any other scale terminal on the market.



# The JAGXTREME terminal is available in four enclosure styles and with a variety of options.

Model Specifications	General Purpose	Panel Mount	Panel Mount – Blind Chassis	Harsh Environment
Dimensions	12.45 in (25 cm) wide x 7.86 in (20 cm) high x 10.6 in (27 cm) deep	10.05 in (25.5 cm) x 5.6 in (14 cm) at the front of the terminal 9.5 in (24 cm) x 4.91 in (12.5 cm) at the rear 8.03 in (21 cm) deep	10.75 in (27 cm) x 4.31 in (10.9 cm) at the base 10.25 in (26 cm) x 3.91 in (10 cm) c-c mounting 9.5 in (24.1 cm) x 5.00 in (13 cm) chassis	12.62 in (32.1 cm) x 8.03 in (21 cm) x 9.3 in (23.6 cm)
Housing/Construction	Aluminum			Stainless steel
Mounting Options	Column, desktop	Panel	Blind panel	Wall, column
Degree of Protection	NEMA 4	NEMA 4 (front panel)	NEMA 1	NEMA 4X (IP65)
Ethernet Connection	Standard RJ-45 connector with TCP/IP services			
Number of Attachable Platforms	4 analog or 4 POWERCELL® or 2 High Precision or 2 DigiTOL®			
Display	Two vacuum fluorescent displays. Upper display: 7 segment 0.5" (13 mm); lower display: 16-character, 5 x 7 dot matrix display 0.25" (6 mm)			
Keypad	4 x 5 matrix tactile-feel keypad with 0-9, letters A-Z, and function keys			
Interfaces	Ethernet, serial, discrete, w/ PLC network			
A/D Rate	>300 per second			
Digital Input/Output	Maximum 12 in/12 out			
Maintenance Monitoring	TraxEMT™ Embedded Maintenance Technician system for self-diagnosis and predictive failure analysis			
Signal Processing	TraxDSP™ three-stage filtering			
Power Requirements	85 to 264 VAC, with a line frequency of 47 to 63 Hz			
Setup	Through embedded web server, front keypad or using the offline JagXFILES tool box			
Scripting Language	JagBASIC® (standard)			
Operating Temperature	14°F to 113°F (-10°C to 45°C) at 10% to 95% relative humidity, non-condensing			
Storage Temperature	40°F to 140°F (-40°C to 60°C) at 10% to 95% relative humidity, non-condensing			
Options	Analog, Dual Analog, Analog Reduced Excitation, Dual Analog Reduced Excitation, Dual Analog Output, Modbus Plus®, Profibus®, A-B RIO, Multifunction I/O, IDNet, POWERCELL®, JagBASIC Editor			
Approvals	<p>CE Conformity 90/384/EU — Non-automatic Balances and Scales EN45501:1992 — Adopted European Standard Weights and Measures (US) Class III or IIIL devices NTEP Certificate of Conformance No. 94-096 Weights and Measures (Australia) Class III and IIIL non-automatic weighing instruments as defined in the National Standards Commission, Document 100</p>        			

	TEL	FAX		TEL	FAX	
<b>METTLER TOLEDO</b>	Australia (61-3) 9644 5700	(61-3) 9645 3935	Korea (82-2) 518-2004	(82-2) 518-0813	Internet	
	Austria (43-1) 604 1980	(43-1) 604 2880	Malaysia (60-3) 703-2773	(60-3) 703 8773	www.mt.com	
USA and Canada	Belgium (32-2) 334 0211	(32-2) 378 1665	Mexico (52-5) 547 5700	(52-5) 541 2228		
1900 Polaris Parkway	Brazil (55-11) 421 5737	(55-11) 7295-1692	Netherlands (31-344) 638363	(31-344) 638390	Specifications subject to change	
Columbus, Ohio 43240	China (Industrial) (86-519) 6642040	(86-519) 6641991	Norway (47-22) 30 44 90	(47-22) 32 70 02	without notice.	
	China (Systems) (86-21) 6485-0435	(86-21) 6485-3351	Poland (48-22) 651 9232	(48-22) 651-7172		
TEL (800) 786-0038	Croatia (385-1) 23 36 317	(385-1) 23 04 147*	Russia (7-095) 921 9211	(7-095) 921 6353	© 2000 Mettler-Toledo, Inc.	
(614) 438-4511	Czech Republic (420-2) 254962	(420-2) 24247583	Singapore (65) 778 6779	(65) 778 6639	METTLER TOLEDO® is a registered	
FAX (614) 438-4900	Denmark (45-43) 27 08 00	(45-43) 27 08 28	Slovak Republic (421-7) 43 42 74 96	(421-7) 43 33 71 90	trademark of Mettler-Toledo, Inc.	
	France (33-1) 30 97 17 17	(33-1) 30 97 16 16	Slovenia (386-61) 162 1801	(386-61) 162 1789*	JAGXTREME™ is a trademark of	
Headquarters	Germany (49-641) 50 70	(49-641) 52951	Spain (34-93) 223 2222	(34-93) 223 0271	Mettler-Toledo, Inc.	
8606 Greifensee	Hungary (36-1) 257 9889	(36-1) 256 2175	Sweden (46-8) 702 50 00	(46-8) 642 45 62		
Switzerland	India (91-22) 857-0808	(91-22) 857-5071	Switzerland (41-1) 944 45 45	(41-1) 944 45 10	Printed in USA.	
	Italy (39-2) 333321	(39-2) 356-2973	Taiwan (886-2) 2579-5955	(886-2) 2579-5977		
TEL (41-1) 944 22 11	Japan (81-6) 6949-5901	(81-6) 6949-5944	Thailand (66-2) 719 6480	(66-2) 719 6479		
FAX (41-1) 944 30 60	Kazakhstan (7-3272) 50 63 69	(7-3272) 60 88 35	United Kingdom (44-116) 235 7070	(44-116) 236 6399	10M0700	
					INDICATORS	
					IN03341.0E	