

661-3212

Hand Wrap Station

Service Manual

©Mettler-Toledo, Inc. 2000

No part of this manual may be reproduced or transmitted in any form or by any means, electronic or mechanical, including photocopying and recording, for any purpose without the express written permission of Mettler-Toledo, Inc.

U.S. Government Restricted Rights: This documentation is furnished with Restricted Rights.

METTLER TOLEDO®

Customer Feedback

Attention: Retail Quality Manager - MTWR

If you have a problem with one of our products or publications, or just a suggestion on how we can serve you better, please fill out this form and send it to the address on the opposite side of this page (U.S. postage paid), or fax it to us at **(614) 438-4355**. Your feedback will help us to improve product performance, quality, and service.



METTLER TOLEDO

Part / Product Name:	
Part / Model Number:	Date:
Provided By:	
Customer Name:	
Address:	
Phone Number:	Fax Number:

Your comments on product performance, quality, or service:

Do not write in space below. For METTLER TOLEDO use only.

Response (where appropriate). Include root cause analysis and corrective action taken.

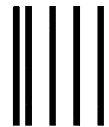
METTLER TOLEDO
Scales & Systems
1900 Polaris Parkway
Columbus, Ohio 43240

METTLER TOLEDO® is a registered trademark of Mettler-Toledo, Inc.

©2000 Mettler-Toledo, Inc.

Printed in USA

FOLD THIS FLAP FIRST



NO POSTAGE
NECESSARY IF
MAILED IN THE
UNITED STATES

BUSINESS REPLY MAIL

FIRST CLASS PERMIT NO. 414 COLUMBUS, OH

POSTAGE WILL BE PAID BY ADDRESSEE

Mettler-Toledo, Inc.
Retail Quality Manager - MTWR
P.O. Box 1705
Columbus, OH 43216
USA



Please seal with tape.

INTRODUCTION

This publication is provided solely as a guide for individuals who have received Technical Training in servicing the METTLER TOLEDO product.

Information regarding METTLER TOLEDO Technical Training may be obtained by writing to:

Mettler-Toledo, Inc.
1900 Polaris Parkway
Columbus, Ohio 43240
www.mt.com
(614) 438-4511

FCC Notice

This device complies with Part 15 of the FCC Rules and the Radio Interference Requirements of the Canadian Department of Communications. Operation is subject to the following conditions: (1) this device may not cause harmful interference, and (2) this device must accept any interference received, including interference that may cause undesired operation.

This equipment has been tested and found to comply with the limits for a Class A digital device, pursuant to Part 15 of FCC Rules. These limits are designed to provide reasonable protection against harmful interference when the equipment is operated in a commercial environment. This equipment generates, uses, and can radiate radio frequency energy and, if not installed and used in accordance with the instruction manual, may cause harmful interference to radio communications. Operation of this equipment in a residential area is likely to cause harmful interference in which case the user will be required to correct the interference at his own expense.

**METTLER TOLEDO RESERVES THE RIGHT TO MAKE REFINEMENTS OR
CHANGES WITHOUT NOTICE.**

PRECAUTIONS

Read the following instructions carefully before installing, operating, cleaning, or maintaining your new Hand Wrap Station. Save these instructions for future reference.

Contact your supplier of heat sealable wrapping films to verify that the films you are using with heated belt sealers do not release toxic fumes at temperatures below 700°F.

Operate wrapping and sealing equipment only in a well ventilated area.

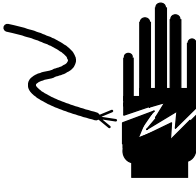

Do not allow untrained personnel to install, operate, clean, inspect, or maintain this machine.

Be sure the Hand Wrap Station is connected to a properly grounded outlet of the correct voltage and amperage, as specified on the identification plate. Do not remove ground prong from PLUG.

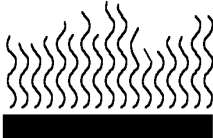

ALWAYS disconnect the Hand Wrap Station from the power source before threading film, cleaning, maintaining, or inspecting.


Keep hands and loose clothing away from hot surfaces such as Low Temperature Cutoff Rod and Sealing Plate while operating, cleaning, maintaining, or inspecting.



CALL METTLER TOLEDO for parts, information, and service.

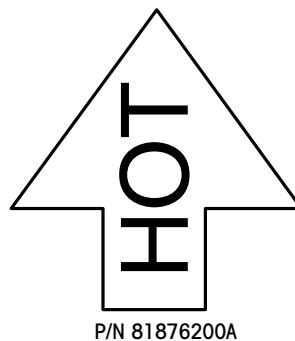
	 WARNING
	DISCONNECT ALL POWER TO THIS UNIT BEFORE INSTALLING, SERVICING, CLEANING, OR REMOVING THE FUSE. FAILURE TO DO SO COULD RESULT IN BODILY HARM AND/OR PROPERTY DAMAGE.

	 CAUTION
	SURFACES MAY BE HOT EVEN THOUGH POWER SWITCH IS IN THE "OFF" POSITION.

	 CAUTION
	OPERATE THIS EQUIPMENT ONLY IN A WELL VENTILATED AREA. VERIFY THE FILM IS INTENDED FOR LOW TEMP ROD CUTOFF AND HOT SEALING PLATES AND DOES NOT RELEASE TOXIC FUMES.

 CAUTION	
50 LB MAXIMUM LOAD LOADS IN EXCESS OF 50 LB COULD RESULT IN IMPROPER MACHINE OPERATION OR DAMAGE	

 CAUTION		— HOT — DO NOT TOUCH HEATING ELEMENTS <small>P/N 12021200A</small>
--	---	--



CONTENTS

1	General Description	1-1
2	Specifications	2-1
	Agency Approval	2-1
	Environmental Requirements.....	2-1
	Power Requirements	2-1
	Film Capacity	2-1
3	Safety and Precautions	3-1
4	Setup	4-1
	Setup.....	4-1
	Film Threading	4-1
	Adjusting Film Tension.....	4-3
5	Operator Controls.....	5-1
	Power Switch	5-1
	Low Temp Cutoff Rod	5-1
	Sealing Plate Thermostat	5-2
6	Cleaning and Maintenance	6-1
	General Precautions	6-1
	Low Temp Cutoff Rod	6-1
	Teflon Cover on Sealing Plate	6-2
	Frame and Shelves	6-2
	Film Support Rollers.....	6-2
	Troubleshooting	6-2
7	Replacement Parts	7-1
	Frame.....	7-2
	Frame Parts List	7-3
	Roller and Film Brake Assembly	7-4
	Roller and Film Brake Parts List.....	7-5
	Low Temp Cutoff Rod and Control Panel	7-6
	Low Temp Cutoff Rod and Control Panel Parts List	7-7
	Sealing Plate	7-8
	Sealing Plate Parts List.....	7-9
8	Accessories	8-1
	Accessory Illustration	8-2
	Parts List for Accessories	8-3
9	Wiring Diagram	9-1

1

General Description

The Mettler Toledo model 661-3212 Prewrap Hand Wrap Station is designed to increase wrapping production. Features include a low temp film cutoff rod, flip away film selectors, three sets of arborless film supports and a Teflon covered sealing plate.

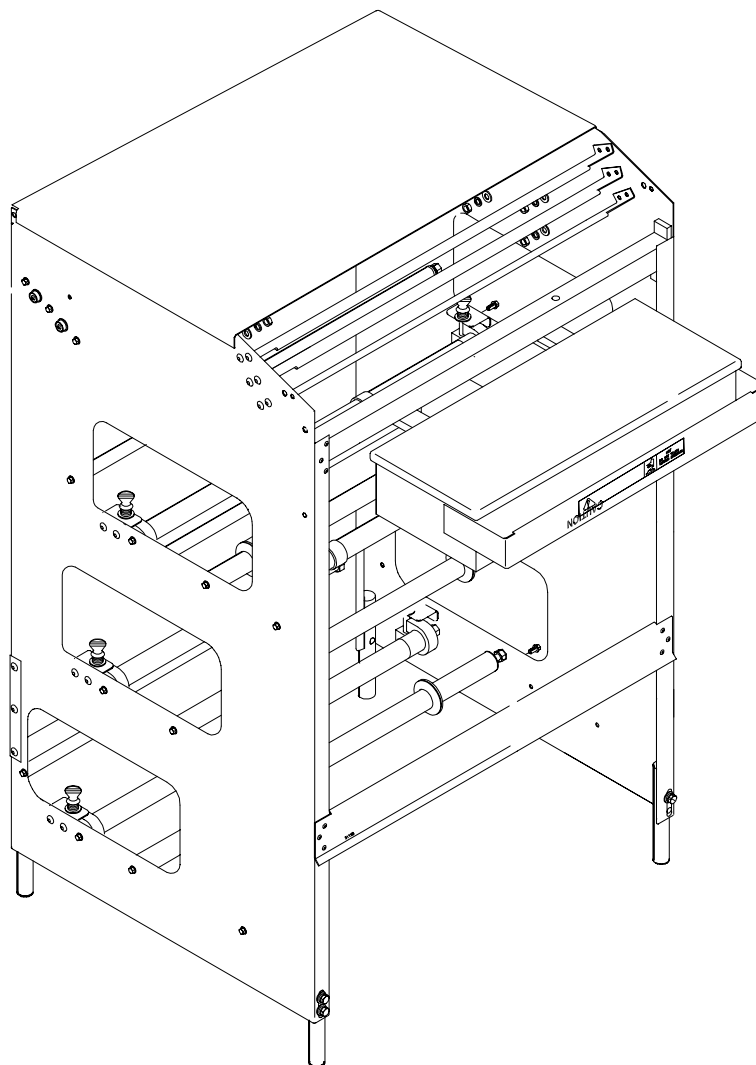
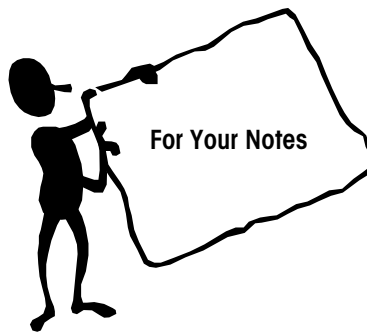


Figure 1-1: Model 661-3212



2

Specifications

Agency Approval

UL and CSA approved.

Environmental Requirements

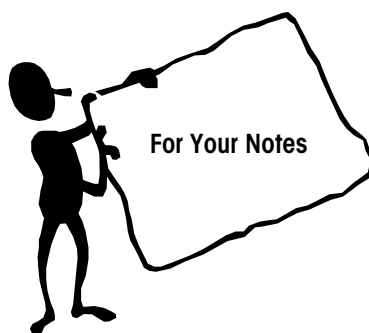
The Model 661 Hand Wrap operating range is between +5° to +35°C (+41° to +95°F) at 10% to 95% relative humidity, non-condensing. The shipping and storage temperature range is between 0°C to +66°C (+32°F to +150°F) at 10% to 95% relative humidity, non-condensing. The Model 661 is designed for use in prepackaging backroom environments. The Model 661 is not intended for wash-down operation, nor for operation in environments of extreme dust, heat, cold, or humidity. No NEMA rating applies.

Power Requirements

The Model 661 requires 115 VAC, 60 Hz., single phase, power at 6 amps nominal to operate. The circuit must be properly grounded.

Film Capacity

The Model 661 will accept 3 rolls of film up to 20" wide.





3

Safety and Precautions



Before cleaning or servicing this unit, disconnect AC power by turning the power switch off, then unplugging the AC line cord from the outlet. Failure to observe these precautions could result in bodily harm.

	<div data-bbox="982 493 1047 556"></div> <div data-bbox="1071 504 1291 556">WARNING</div> <div data-bbox="852 588 1421 703">DISCONNECT ALL POWER TO THIS UNIT BEFORE INSTALLING, SERVICING, CLEANING, OR REMOVING THE FUSE. FAILURE TO DO SO COULD RESULT IN BODILY HARM AND/OR PROPERTY DAMAGE.</div>
---	--

Do not allow untrained personnel to operate, clean, inspect, maintain, service, or tamper with this equipment.



	<div data-bbox="982 854 1047 917"></div> <div data-bbox="1071 865 1291 917">WARNING</div> <div data-bbox="852 949 1421 1096">ONLY PERMIT QUALIFIED PERSONNEL TO SERVICE THIS EQUIPMENT. EXERCISE CARE WHEN MAKING CHECKS, TESTS AND ADJUSTMENTS THAT MUST BE MADE WITH POWER ON. FAILING TO OBSERVE THESE PRECAUTIONS CAN RESULT IN BODILY HARM.</div>
--	--

Caution, Low Temp Cutoff Rod and Sealing Plate may be hot even though power switch is in the off position.

	<div data-bbox="982 1247 1047 1310"></div> <div data-bbox="1071 1257 1291 1310">WARNING</div> <div data-bbox="852 1341 1421 1402">Surfaces may be hot. Allow to cool before cleaning or servicing.</div>
---	--

Always replace labels which are damaged, illegible or missing.

Contact your film supplier to verify that the film you are using is intended for use with a low temp rod cutoff and hot sealing plates and does not release toxic fumes. Operate this equipment only in a well ventilated area.

	 CAUTION
	OPERATE THIS EQUIPMENT ONLY IN A WELL VENTILATED AREA. VERIFY THE FILM IS INTENDED FOR LOW TEMP ROD CUTOFF AND HOT SEALING PLATES AND DOES NOT RELEASE TOXIC FUMES.

4

Setup

Setup

See the Accessories pages in the Parts section of this manual for attachment information.

Film Threading

Load three rolls of film onto the arborless film cradles. Any size film width from 12" to 20" may be used. It is recommended that the large roll of film be placed on the bottom cradle, the medium roll on the middle cradle, and the small roll on the top cradle.

Before placing the roll of film on its cradle, orient the Film Roll so that the end of the film will hang down between the cradle rollers, and the film will dispense from the top of the roll towards the back of the Model 661. (Refer to the Film Threading Diagram, Figure 4-1)

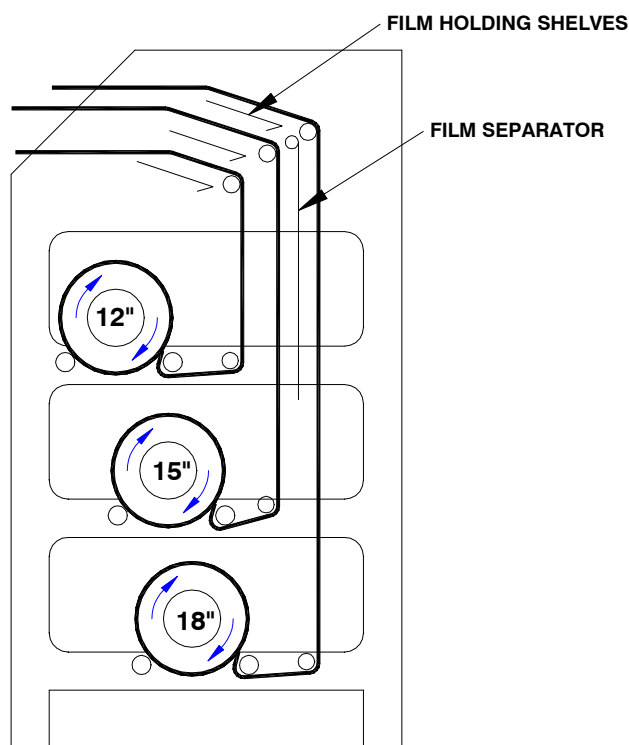


Figure 4-1: Film Threading Diagram - 3 Rolls of Film

Center the film rolls on their respective rollers. Position the Film Roll Retaining Grommets approximately 1/4" away from the ends of the film roll. (Refer to Figure 4-2)

Thread the film through the film rollers and into the Film Selector as shown in the Film Threading Diagram. (Figure 4-1)

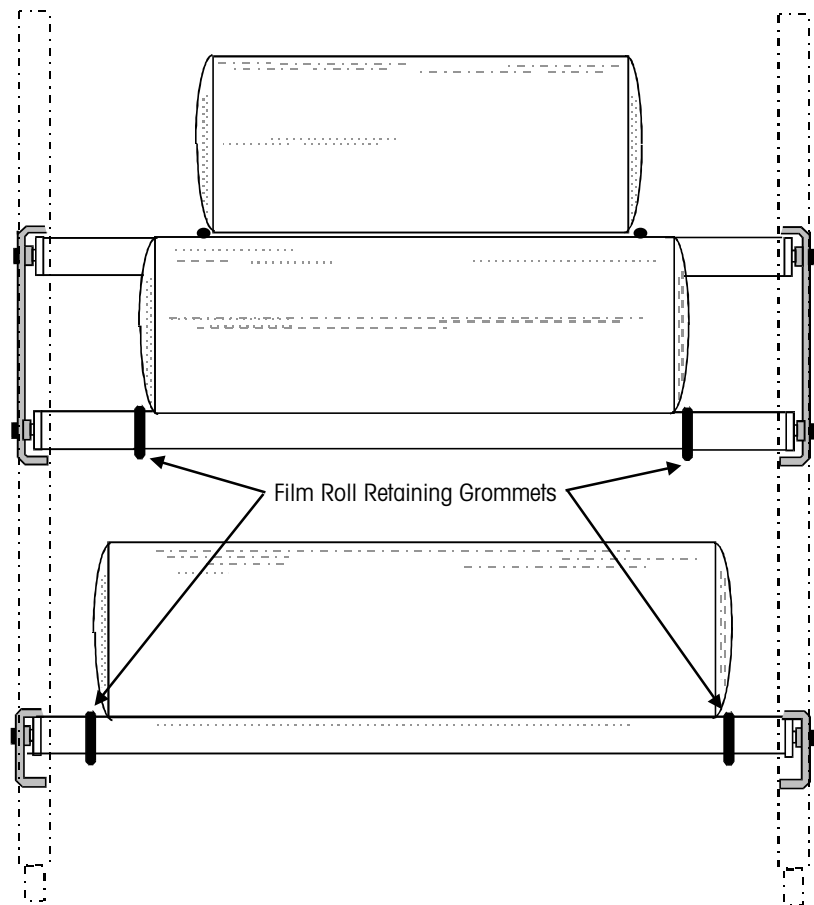


Figure 4-2: Film Roll Retaining Grommet

Tear or cut the end of the film straight across, and fold the end of the film neatly over the Film Leaf. (Figure 4-3).

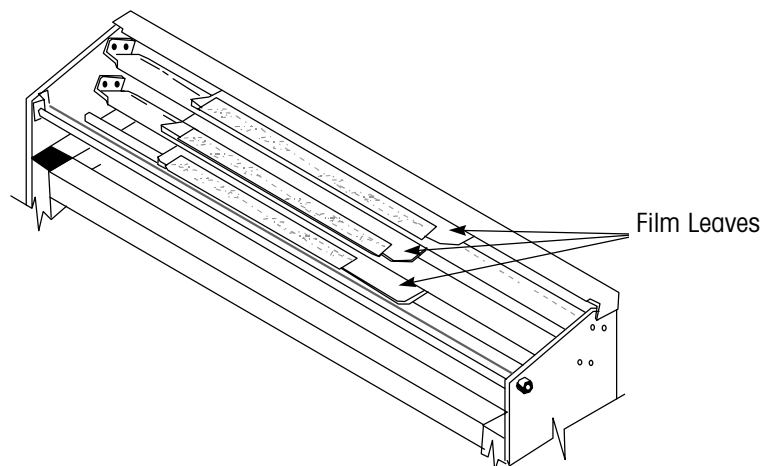


Figure 4-3: Film Leaf

Adjusting Film Tension

The film tension should be adjusted to suit your wrapping comfort. It should be loose enough so that the film pulls easily from the roll, yet tight enough to stretch the film as you pull it, to allow you to produce a tight, wrinkle-free package. To provide better control of film tension, this machine is equipped with a dual braking system for each film roll. A Film Brake is located at each end of the front Film Support Roller of each roll of film (Figure 4-4). The film tension is adjusted by loosening or tightening the Film Roller Brakes. To increase the film tension, turn the Film Roller Brake Adjusting Screw clockwise. To decrease the film tension, turn the Film Roller Brake Adjusting Screw counterclockwise.

For uniform pull on the film, both brakes on a Film Support Roller must be set for equal tension. Before installing a roll of film, loosen each brake so the roller turns freely. Then tighten each adjusting screw until the brake is lightly snugged against the roller. After the roll is mounted, adjust the tension, as desired, by turning both adjusting screws in 1/4 turn increments.

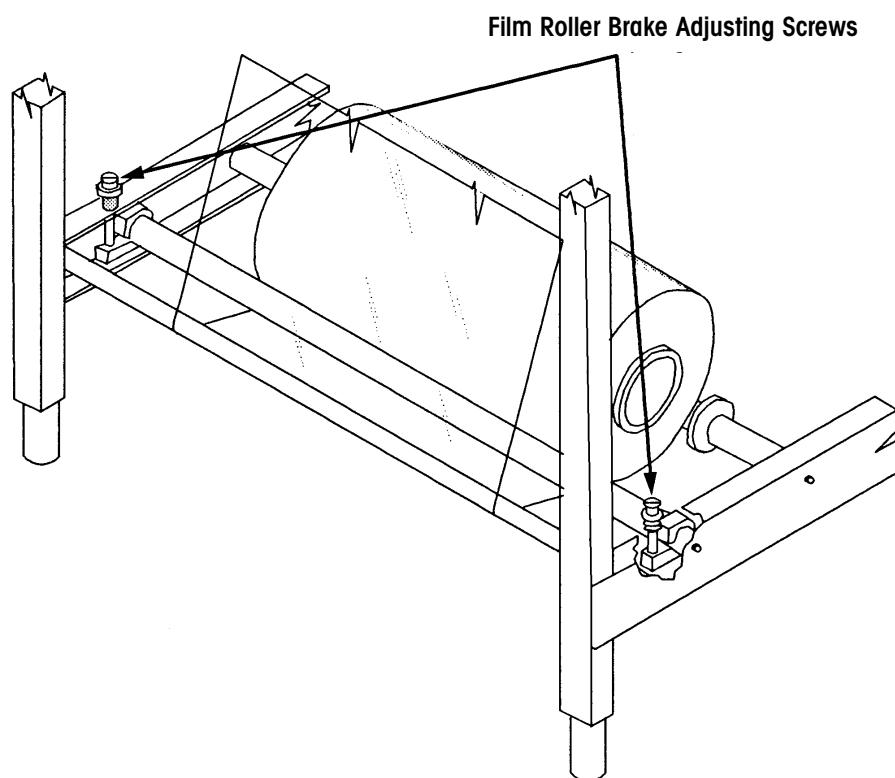
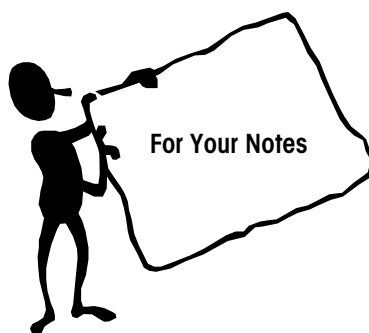


Figure 4-4: Film Roller Brake Adjusting Screws



5

Operator Controls

Power Switch

The Power Switch is located on the front right side under the Sealing Plate. The upper part of the switch lights up when the power is on. The switch controls power to the Low Temperature Cutoff Rod and the Sealing Plate.



Figure 5-1: Power Switch

Low Temp Cutoff Rod

The temperature of the Cutoff Rod is thermostatically controlled. The temperature is set at the factory and is not adjustable. Allow 15 minutes when first turning the power on for the Low Temp Cutoff Rod to reach operating temperature.

Sealing Plate Thermostat

Note: Never set the thermostat higher than necessary to get a good seal, or the film on the bottom of the package may burn.

The Sealing Plate Thermostat is set for a temperature of 350°F at the factory. The Sealing Plate Thermostat is located on the underside of the Sealing Plate. (Figure 5-2) To change the temperature of the Sealing Plate, turn the thermostat shaft with a screwdriver. To raise the temperature, turn the shaft clockwise. To lower the temperature, turn the shaft counterclockwise. After adjusting the thermostat, it will take approximately 15 minutes for the temperature to adjust to the new setting.

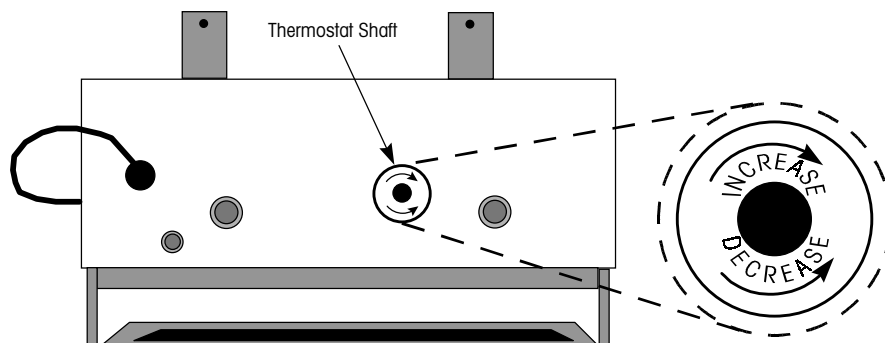


Figure 5-2: Sealing Plate Thermostat

6

Cleaning and Maintenance

General Precautions

	<p> WARNING</p> <p>DISCONNECT ALL POWER TO THIS UNIT BEFORE INSTALLING, SERVICING, CLEANING, OR REMOVING THE FUSE. FAILURE TO DO SO COULD RESULT IN BODILY HARM AND/OR PROPERTY DAMAGE.</p>
	<p> WARNING</p> <p>DO NOT SPRAY OR WASHDOWN. HAZARD OF ELECTRICAL SHOCK OR BURNS.</p>
<p> WARNING</p> <p>DO NOT USE SOLVENTS, CHEMICALS, OR ABRASIVES ON MACHINE, AS THESE MAY HARM SURFACES.</p>	

Low Temp Cutoff Rod

	<p> CAUTION</p> <p>SURFACES MAY BE HOT EVEN THOUGH POWER SWITCH IS IN THE "OFF" POSITION.</p>
---	--

- Turn power off, then disconnect the power cord from the outlet.
- Allow to cool down before cleaning.
- Clean daily, using a dampened scouring pad. Do not use abrasives, such as emery cloth or sandpaper.

Teflon Cover on Sealing Plate



- Turn power off, then disconnect the power cord from the outlet.
- Allow to cool down before cleaning.
- Clean daily using a clean, damp cloth and a mild detergent.

Frame and Shelves

Clean daily, using a clean, damp cloth and a mild detergent.

Film Support Rollers

When replacing a roll of film, the Film Support Rollers and the Film Guide Rollers should be cleaned to remove any particles or burrs that could puncture the film. Clean the rollers with a clean, damp cloth and mild detergent.

Troubleshooting

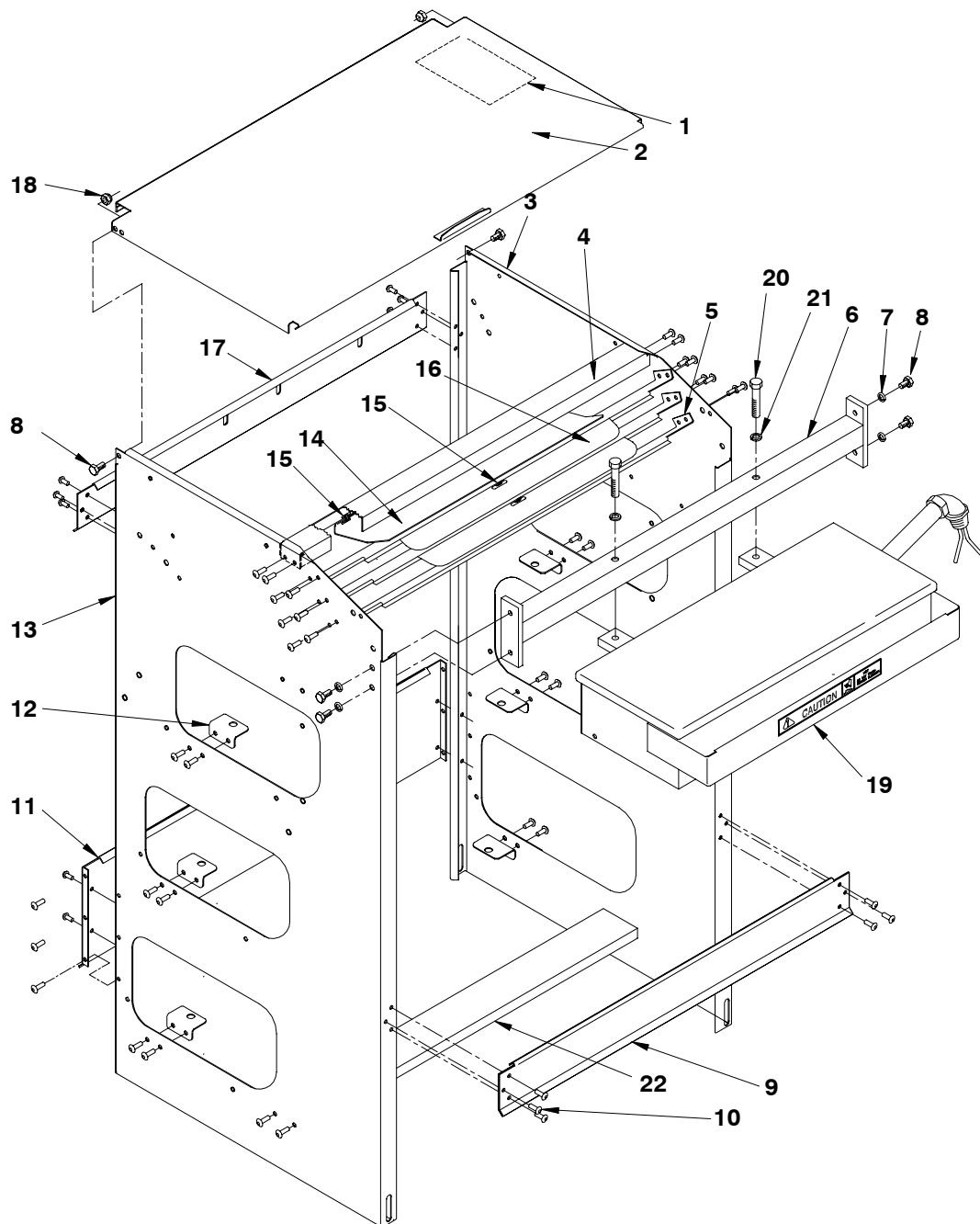
- Is the machine connected to a properly grounded outlet of the correct amperage and voltage?
- Are the circuit breakers in the building service panel in the ON position?
- Is the power switch in the ON position?
- Is the sealing plate thermostat adjusted properly?
- Is the Low Temp Cutoff Rod clean?
- Is the film loaded and threaded properly?
- Are the Film roller brakes adjusted properly?
- Are the film support rollers clean and free of burrs?

7

Replacement Parts

Chapter 7 covers replacement part numbers. Carefully check your part numbers for accuracy before ordering.

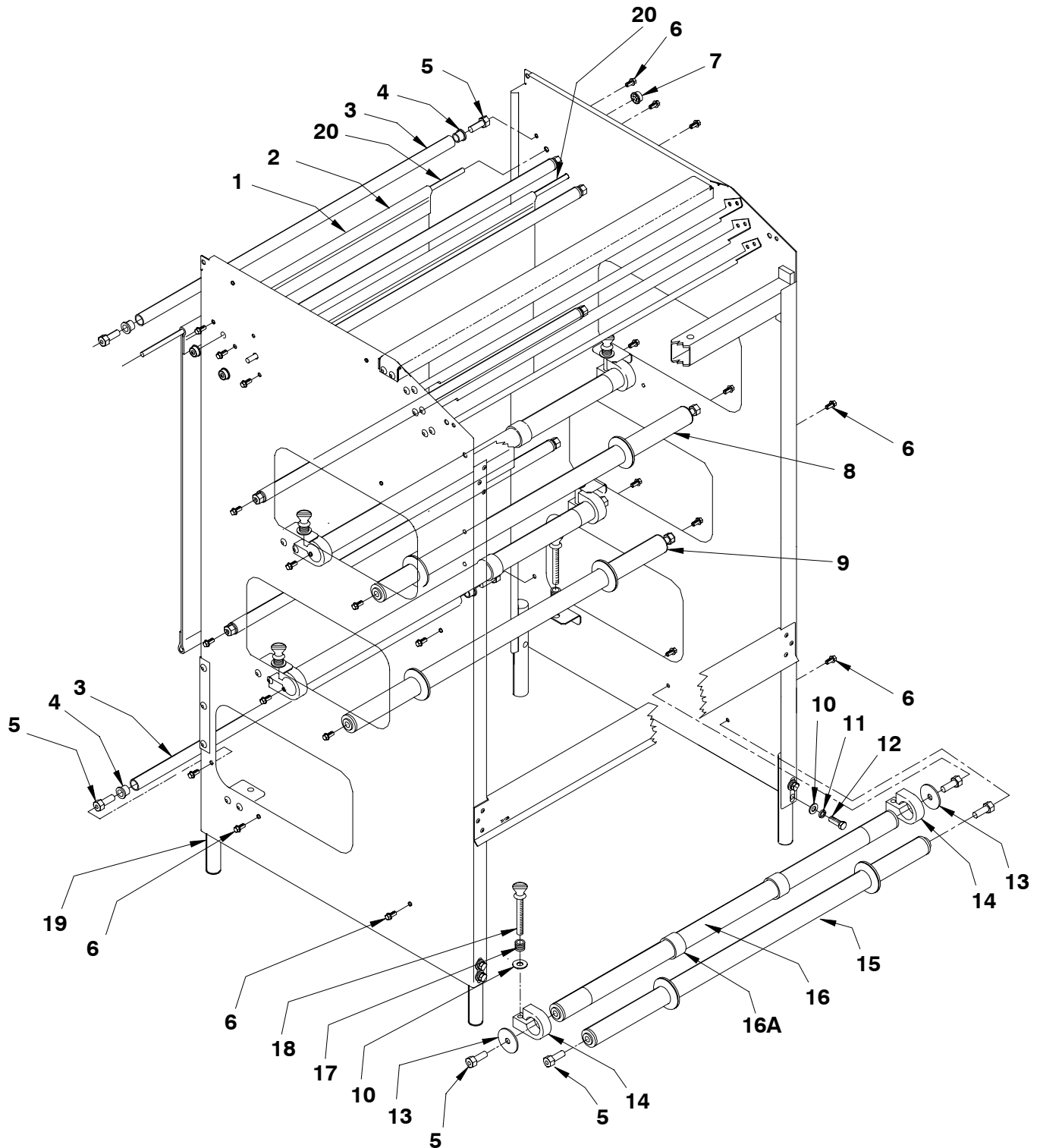
Frame



Frame Parts List

ITEM	QTY.	DESCRIPTION	PART NUMBER
1	1	DECAL - FILM THREADING	81875400A
2	1	TABLE COVER WELDMENT	81890200A
3	1	FRAME RH	82948700A
4	1	TOP BRACE	82200600A
5	3	SHELF - FILM	81878100A
6	1	SEALER SUPPORT	82950900A
7	4	LOCKWASHER 1/4	R0233400A
8	4	SCREW 1/4-20 X 5/8 HEX HEAD CAP	R0234600A
9	1	BAR LOWER FRONT TIE	81868700A
10	59	POP RIVOT	81868000A
11	1	BAR LOWER REAR TIE	81882700A
12	6	CLIP - BRAKE	82484500A
13	1	FRAME LH	82948800A
14	1	LEAF TOP FILM	82266300A
15	4	SPRING - FILM STOP MOUNTING	A81124500A
16	2	STOP - MIDDLE FILM	81880600A
17	1	TIE BAR - UPPER REAR	81873000A
18	2	LOCK NUT 1/4-20 HEX	A80302800A
19	1	SEALER PLATE ASSEMBLY	82950500A
20	2	SCREW 5/16-18 X 1-3/4 HEX HD CAP	R0397500A
21	2	LOCK WASHER 5/16	R0233500A
22	1	SUPPORT - SCALE REAR	81888100A

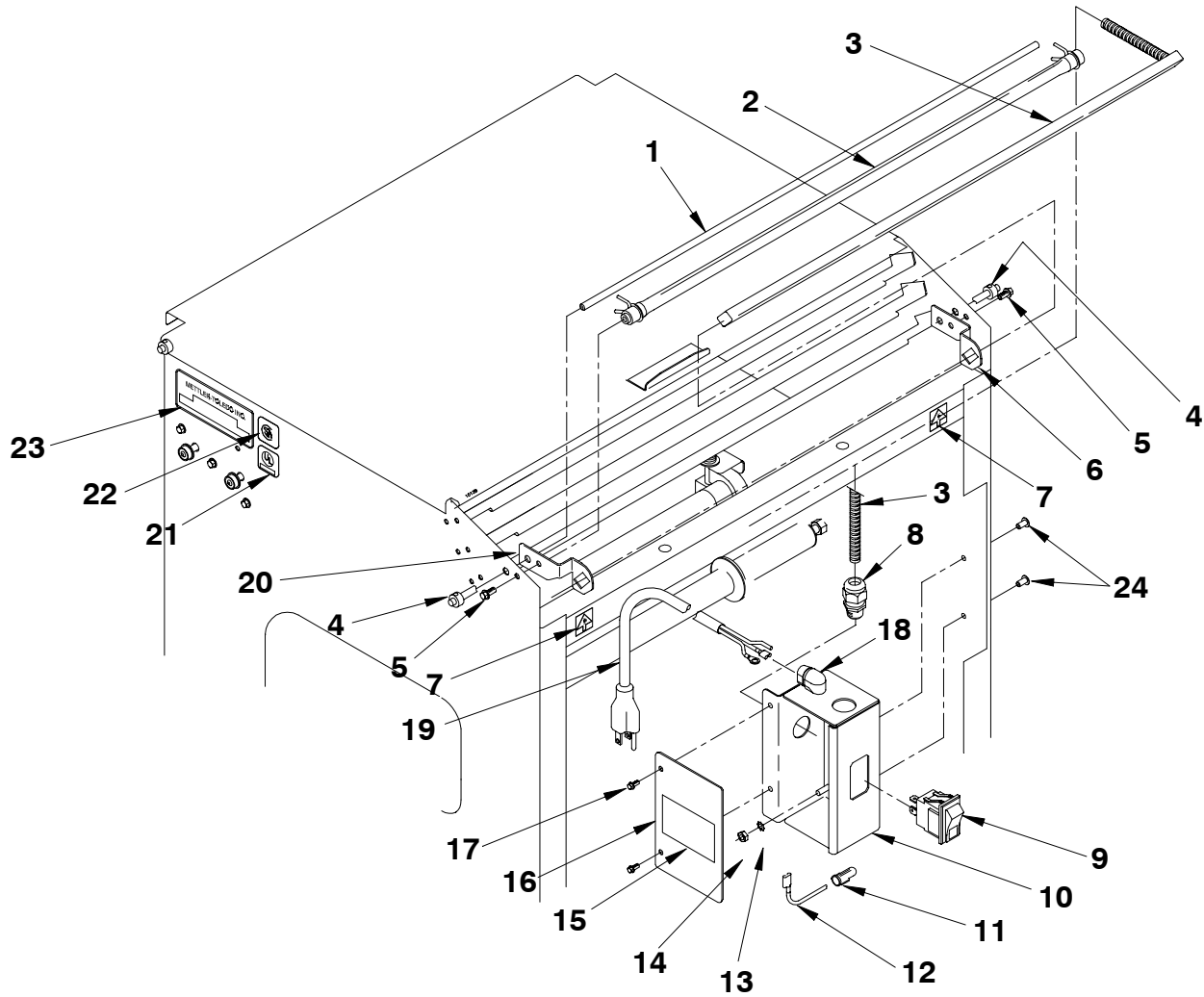
Roller and Film Brake Assembly



Roller and Film Brake Parts

ITEM	QTY.	DESCRIPTION	PART NUMBER
1	1	ROD & CANVAS ASSEMBLY	82150200A
2	1	ROD & CANVAS ASSEMBLY (SHORT)	82223800A
3	6	ROLLER 5/8 DIA. X 22-9/32 LONG	82138700A
4	12	BEARING FLANGE	A80190400A
5	24	MOUNTING STUD	82130000A
6	24	SCREW 10-32 X 3/8 HEX WASHER HD.	A81160600A
7	2	PUSH NUT	A80357800A
8	1	ROLLER & GROMMET ASSEM. - 18" FILM	81924000A
9	1	ROLLER & GROMMET ASSEM. - 15" FILM	81923900A
10	14	WASHER 5/16 FLAT	R0234300A
11	8	WASHER 5/16 LOCK	R0233500A
12	8	SCREW 5/16-18 X 3/4 HEX HD. CAP	R0364100A
13	6	WASHER - BRAKE RETAINING	82138100A
14	6	BRAKE - RETAINING	81832200A
15	1	ROLLER & GROMMET ASSEM. - 12" FILM	81923800A
16	3	ROLLER ASSEM. FILM SUPPORT W/SLEEVE	82451400A
16A	6	SILICONE SLEEVE	82941000A
17	6	SPRING - BRAKE	81868100A
18	6	THUMB SCREW - BRAKE	81868200A
19	4	LEG - WRAP STATION	A81870200A
20	3	ROD - COVER AND FILM	81870500A

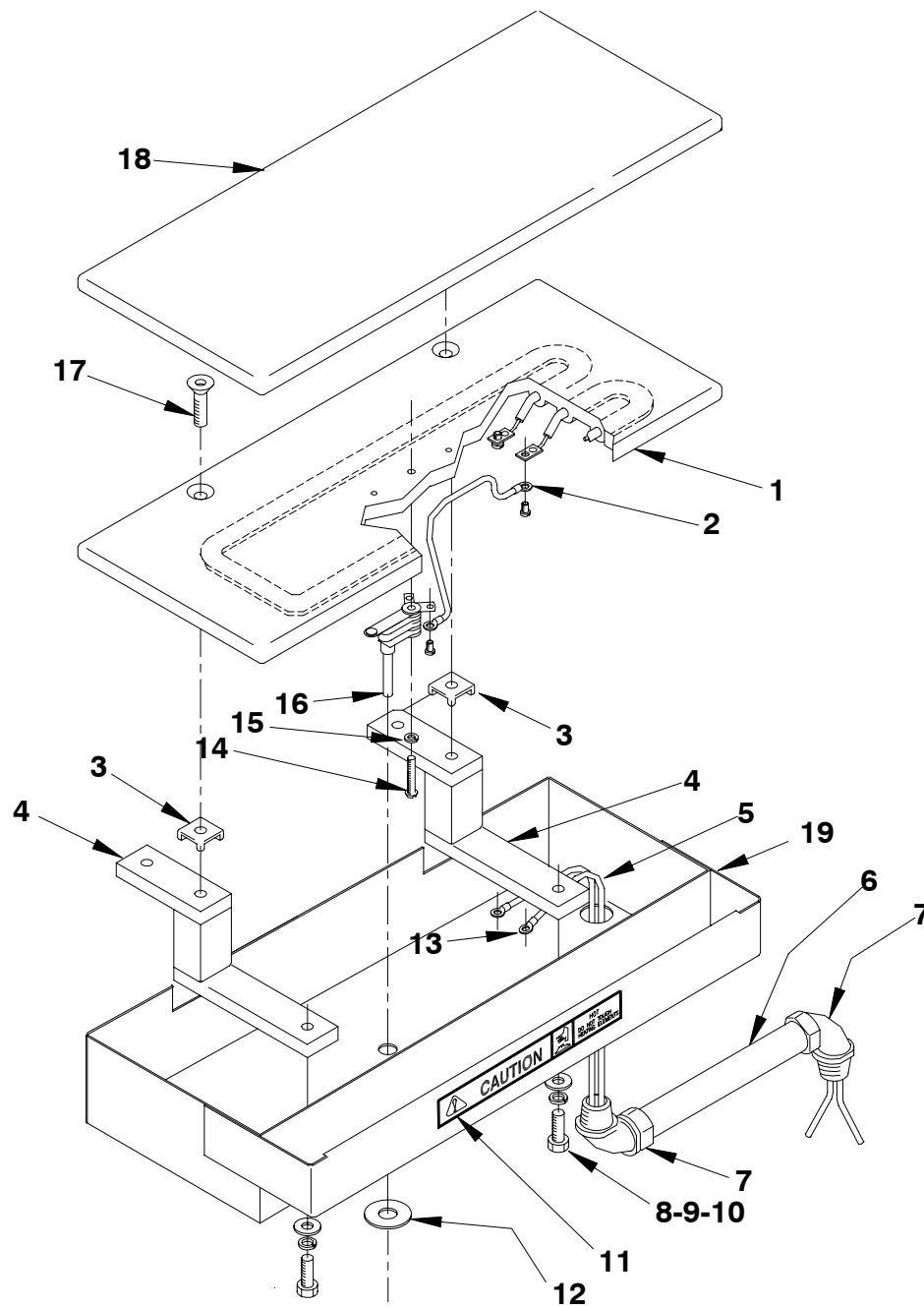
Low Temp Cutoff Rod and Control Panel



Low Temp Cutoff Rod and Control Panel Parts List

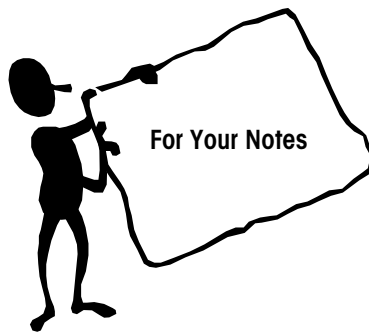
ITEM	QTY.	DESCRIPTION	PART NUMBER
1	1	ROD - COVER & FILM	81870500A
2	1	FILM RETAINING TUBE AND SHAFT	A80319300A
3	1	SQUARE HEATER 1/2 X 22.75	A82086700A
4	2	SET COLLAR - 1/4" I.D.	81895700A
5	2	SCREW #10-32 X 3/8 HEX WASHER HD.	A81160600A
6	1	SUPPORT - LOW TEMP. ROD RH	81835900A
7	2	DECAL - HOT ARROW	81876200A
8	1	HEYCO CONNECTOR - STRAIGHT	82474700A
9	1	SWITCH - MAIN POWER	A82351600A
10	1	CONTROL BOX	82544800A
11	1	WIRE NUT	A80281000A
12	1	JUMPER WIRE	82951100A
13	2	WASHER #10 EXTERNAL TOOTH	R0254500A
14	2	NUT #10-32 HEX	R0342000A
15	1	DECAL - CAUTION DISCONNECT	81921300A
16	1	COVER - CONTROL BOX	82351700A
17	2	SCREW #8-32 X 1/4" HEX WASHER HD.	R0235200A
18	1	90° CORD CONNECTOR	82531000A
19	1	CORD SET #16-3	A80958700A
20	1	SUPPORT - LOW TEMP. LH	81835800A
21	1	LABEL - UL LISTED	82474700A
22	1	CSA LABEL	82519100A
23	1	LABEL SERIAL	82531000A
24	2	POP RIVOT 3/16" X.125-.250 GRIP RANGE	81861100A

Sealing Plate



Sealing Plate Parts List

ITEM	QTY.	DESCRIPTION	PART NUMBER
1	1	SEALING PLATE	A81873100A
2	1	JUMPER WIRE	81922100A
3	2	ISOLATOR - HEAT	81923200A
4	2	HEAT DEFLECTOR MOUNTING BAR	82563600A
5	2	14GA WIRE TGGT 600V 25A X 18" LG.	82534400A
6	1	FLEXABLE CONDUIT, LIQUID TIGHT 4-5/8" LG.	77620001
7	2	CONNECTOR SEALTITE 90°	A80584900A
8	2	SCREW 5/16-18 X 3/4" HEX HD. CAP	R0364100A
9	2	WASHER 5/16 LOCK	R0233500A
10	2	WASHER 5/16 FLAT	R0234300A
11	1	CAUTION HOT DECAL	12021200A
12	1	THERMOSTAT DECAL	81871500A
13	2	RING TERMINAL 14/16 AWG	82534500A
14	1	SCREW #8-32X7/8" RND. HD. MACH.	R0332100A
15	1	WASHER #8 LOCK	R0282800A
16	1	THERMOSTAT	82138900A
17	2	SCREW 5/16-18X1" FLAT SOCKET HD.	R0369400A
18	1	6 X 15 TEFLON COVER	A80280000A
19	1	HEAT DEFLECTOR	82544900A

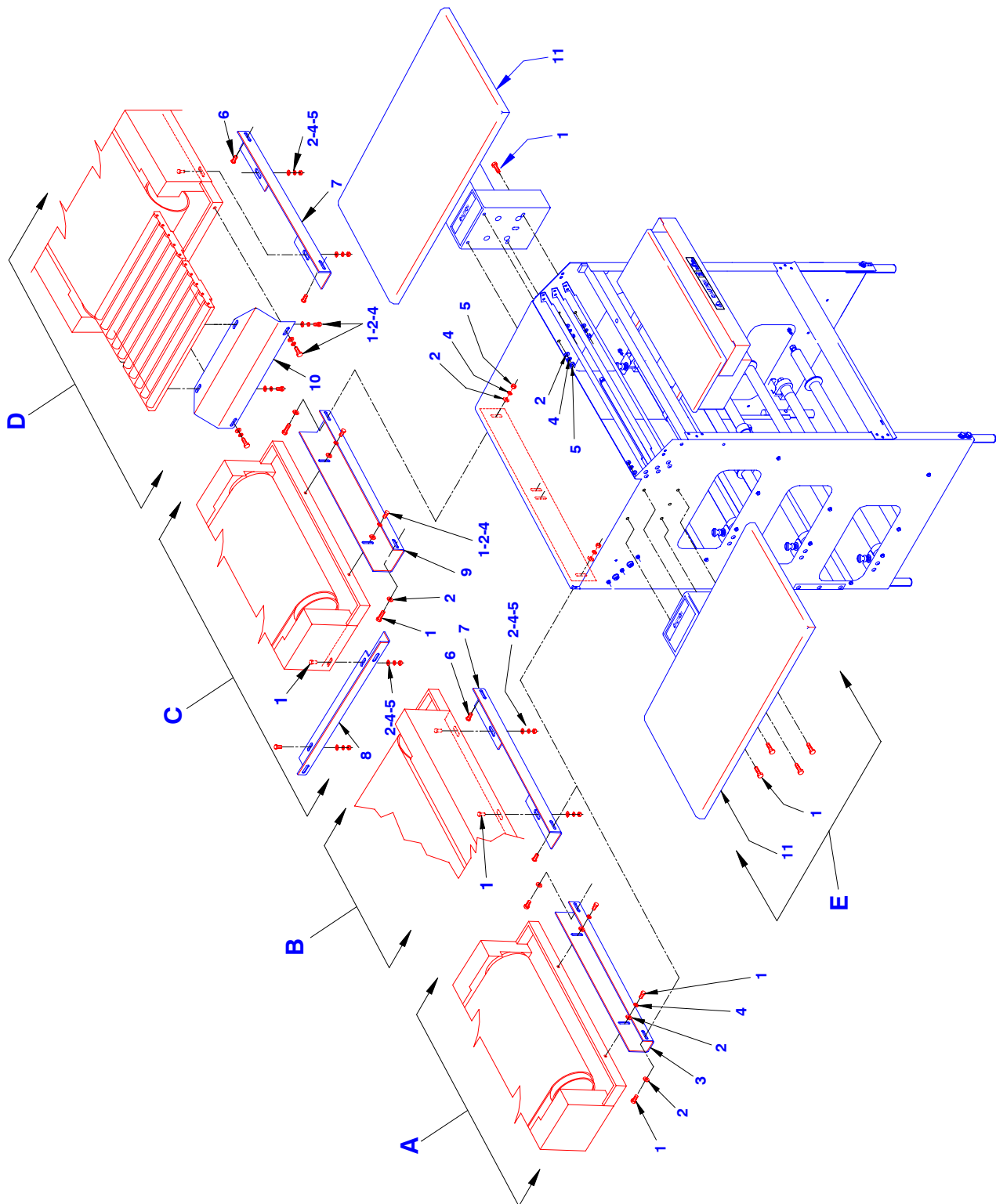


8

Accessories

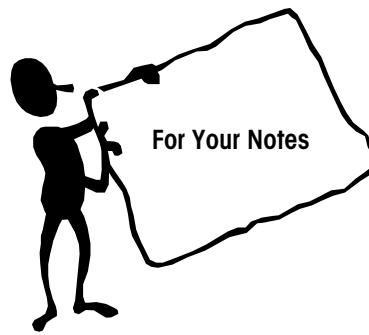
Chapter 8 covers optional accessories for the Model 661-3212. Carefully check your part numbers for accuracy before ordering.

Accessory Illustration



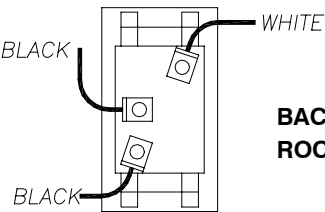
Parts List for Accessories

ITEM	DESCRIPTION	PART NUMBER
1	SCREW 1/4-20 X 1/2" HEX HEAD CAP	R0311000A
2	WASHER 1/4" FLAT	R0366300A
3	BRACKET - FRONT MOUNTING	81886300A
4	WASHER 1/4" LOCK	R0233400A
5	NUT 1/4-20 HEX	R0361400A
6	CARRIAGE BOLT 1/4-20 X 1/2"	R0364000A
7	BRACKET - SEALER SIDE MOUNT	81885400A
8	BRACKET - LEFT SIDE MOUNT	81886400A
9	BRACKET - FRONT MOUNT	81886200A
10	BRACKET - FRONT MOUNT	81886100A
11	SHELF ASSEMBLY - TRAY	81987400A
A	KIT OF PARTS TO INSTALL A 661 ON INFEED END OF BELT SEALER	0925-0138
B	KIT OF PARTS TO INSTALL A 661 ON RIGHT OR LEFT SIDE OF BELT SEALER	0925-0139
C	KIT OF PARTS TO INSTALL A 661 ON INFEED END AND LEFT SIDE OF BELT SEALER	0925-0140
D	KIT OF PARTS TO INSTALL A 661 ON INFEED END AND RIGHT SIDE OF BELT SEALER	0925-0141
E	KIT OF PARTS TO INSTALL PLATTER SHELF ON EITHER SIDE OF 661	0925-0137

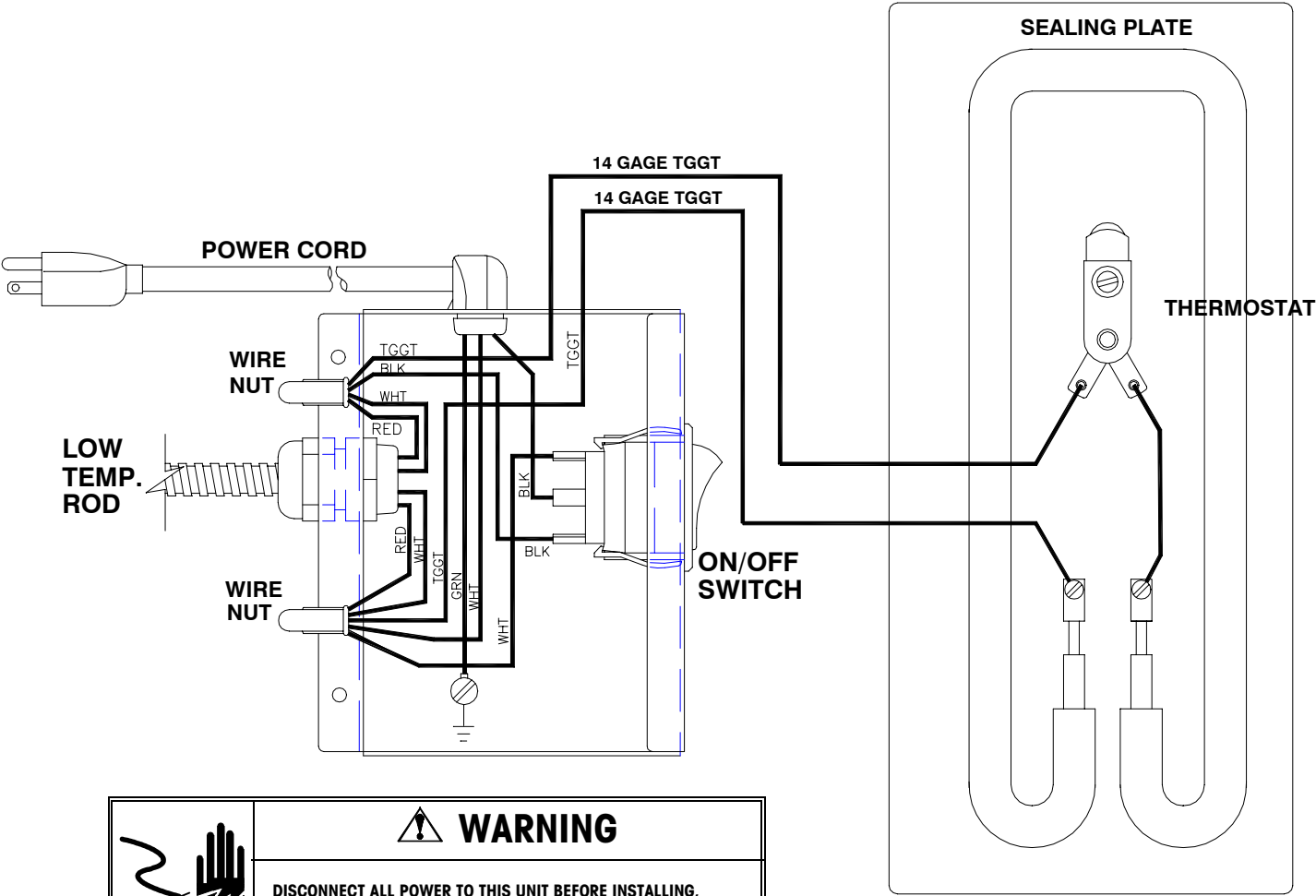


9

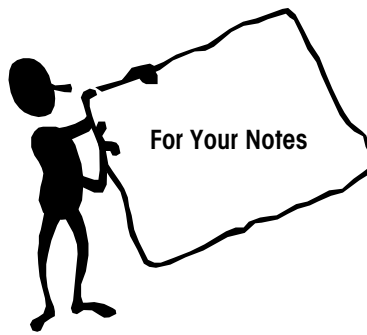
Wiring Diagram



BACK SIDE VIEW OF
ROCKER SWITCH



	<p>⚠ WARNING</p> <p>DISCONNECT ALL POWER TO THIS UNIT BEFORE INSTALLING, SERVICING, CLEANING, OR REMOVING THE FUSE. FAILURE TO DO SO COULD RESULT IN BODILY HARM AND/OR PROPERTY DAMAGE.</p>
--	---



Mettler-Toledo, Inc.

1900 Polaris Parkway
Columbus, Ohio 43240
www.mt.com

P/N: 15516900A

(6/00).01

METTLER TOLEDO® is a registered Trademark of Mettler-Toledo, Inc.
©2000 Mettler-Toledo, Inc.
Printed in U.S.A.



15516900A