

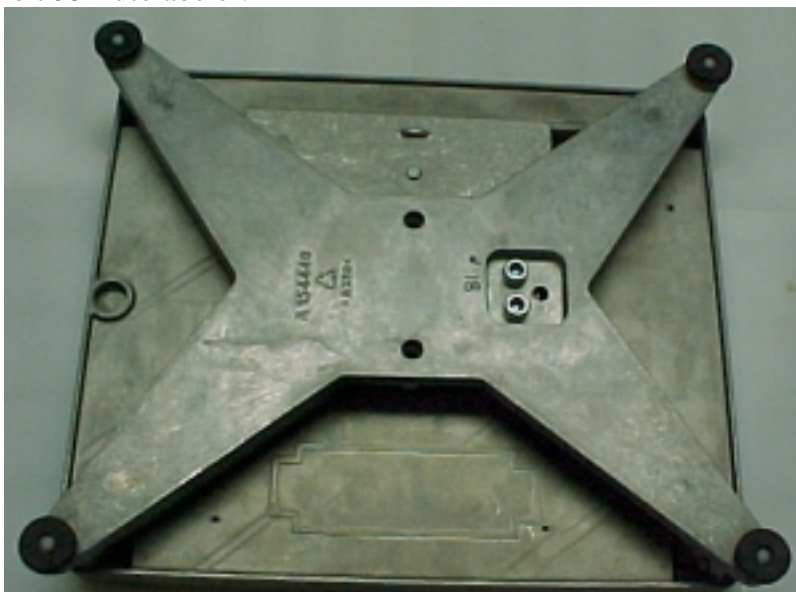
Technical Bulletin

Please Distribute to all Sales and Service Personnel

Mettler-Toledo, Inc.
Scales & Systems

Number: MTFW-21-00
Date: 10-09-00
Model: 8270
Subject: Spider Change

The design of the spider has been changed on the 8270-2000 scale bases. The change includes a change in the rubber pads, which support the scale platter. The change is a drop in replacement in all applications except the 706 Autolabeler.



On 706 Autolabelers with serial number date codes prior to EB, it is necessary to replace the 4 screws that attach the scale platter to the scale conveyor with 4 M4x16mm screws P/N 82715500A and 4 spacers P/N 83140700A to maintain the proper position of the platter on the new style spider.

