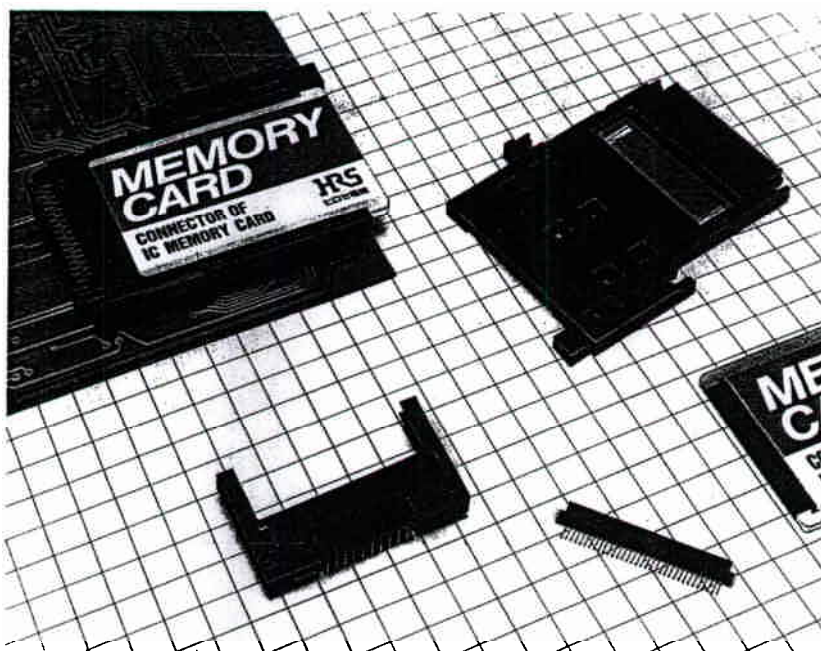


HRS JEIDA VER. 3/VER. 4 COMPATIBLE I.C. MEMORY CARD CONNECTOR

■ SCOPE

The IC1 series connectors include connectors conforming to Version 3 and Version 4 of JEIDA (Japan Electronic Industry Development Association). Models having ejecting mechanism are also available.



■ FEATURES

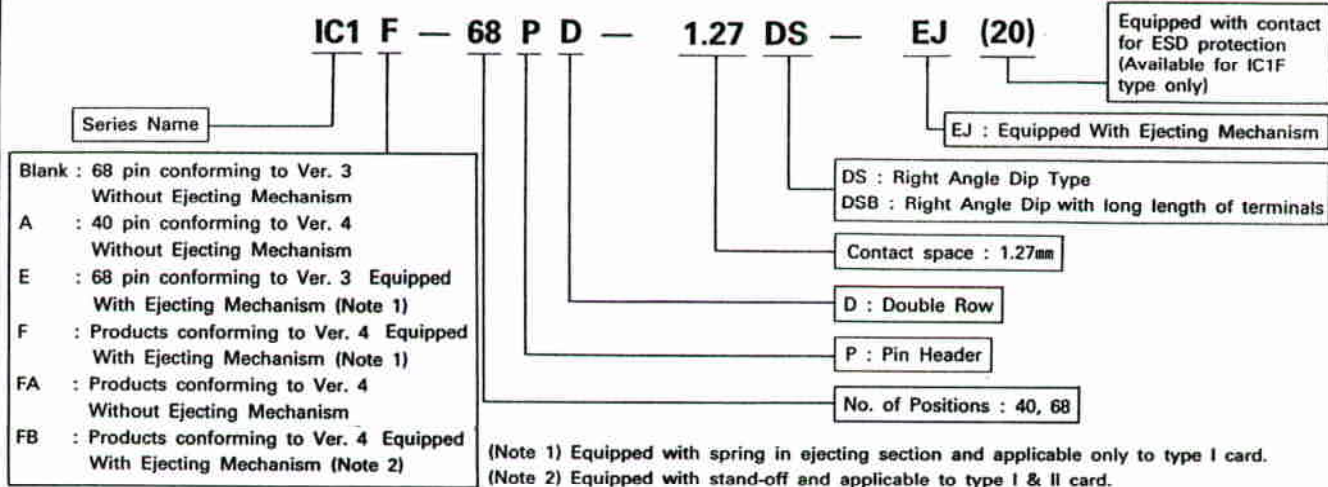
1. Leading features of JEIDA standard of mis-insertion prevention mechanism and sequencing mechanism for circuit protection, are incorporated.
2. Receptacle (card side component) is of surface mount type.
3. Original design features successfully made the ejecting mechanism of appreciably thin structure.
4. Pushbutton switch thin structure type of ejecting section has an inner spring which makes the pushbutton free from vibration.
5. Stand-off type is available. It realizes effective use of the space for ejecting mechanism.

■ APPLICATIONS

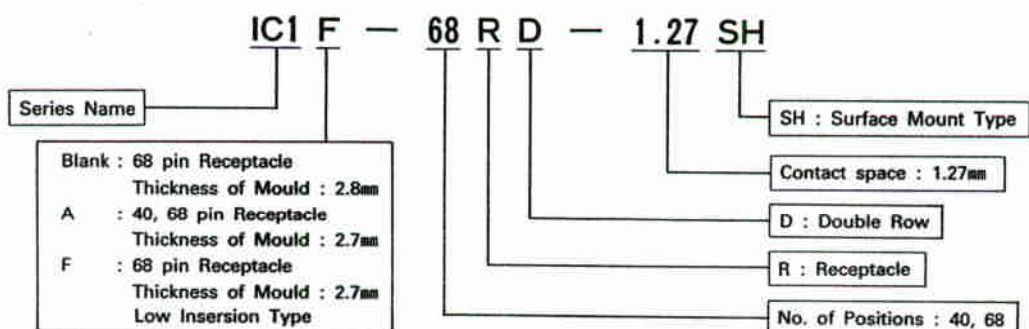
Personal computers, peripheral equipment, a variety of types of OA equipment, etc.

■ ORDERING FORMAT

● Pin Header



● Receptacle



■ Material / Finish

Item		Material	Finish
Insulator	Pin Header	PBT resin (Note 1)	Black
	Ejector	IC1E	Black
		IC1F	
		IC1FB	
	Receptacle	PPS resin (Note 3)	Black
Contact	Pin Header	Brass	Selective gold plating
	Receptacle	Beryllium copper	Selective gold plating
Ejector fittings		SUS	

(Note 1) PBT resin = Polybutylene terephthalate
 (Note 2) PC resin = Polycarbonate resin
 (Note 3) PPS resin = Polyphenylene sulfide resin

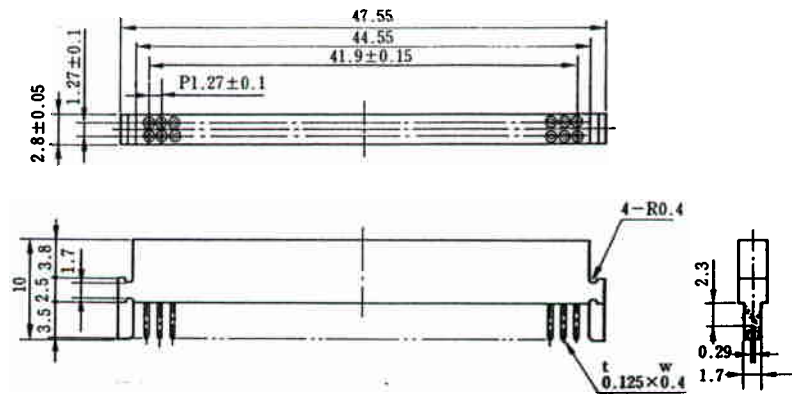
■ Electrical Performance

Item	Specification
Current Rating	0.5A per pin
Withstanding Voltage	500V AC for one minute at specified value
Insulation Resistance	Min. 1000MΩ at 500V DC
Contact Resistance	Max. 40mΩ at 1 mA DC

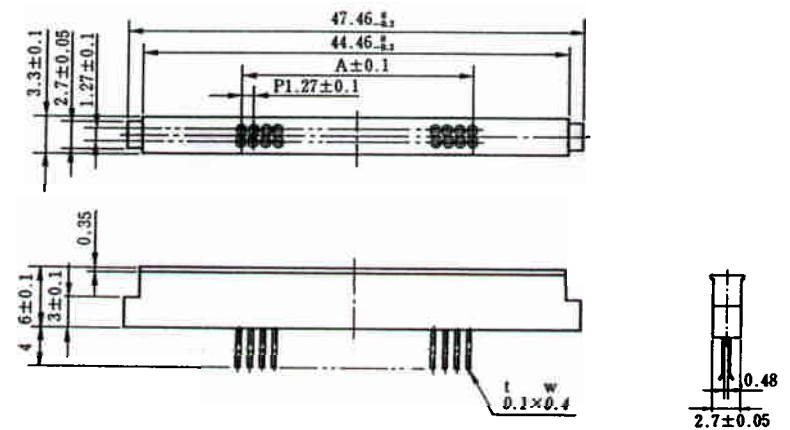
■ Dimensions of Receptacle



IC1-68RD-1.27SH
CL640-0001-1



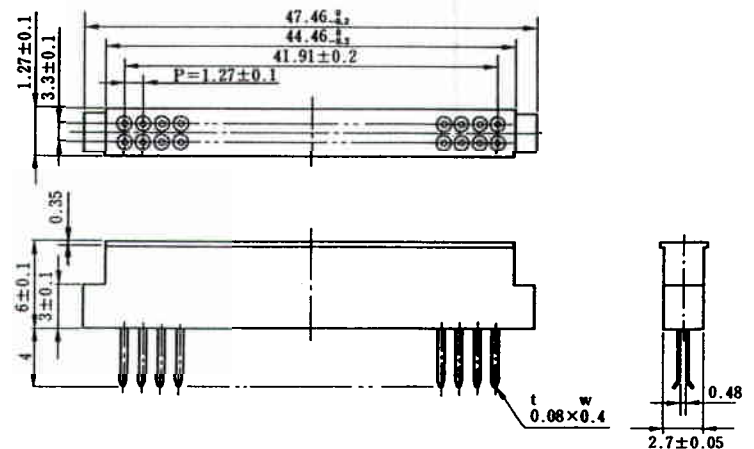
IC1A-✱RD-1.27SH



HRS No.	Name	No. of pin	A
CL640-0003-7	IC1A-40RD-1.27SH	40	24.13
CL640-0004-0	IC1A-68RD-1.27SH	68	41.91

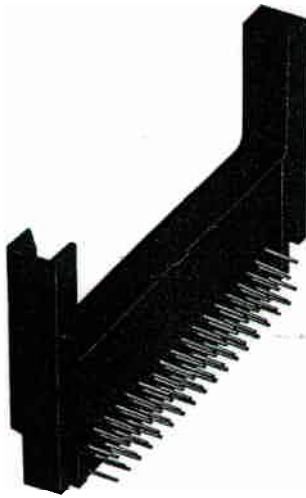


IC1F-68RD-1.27SH
CL640-0013-0

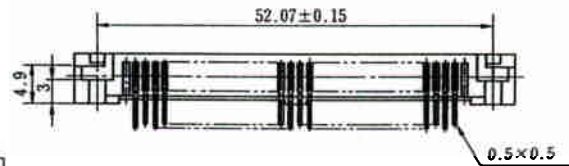
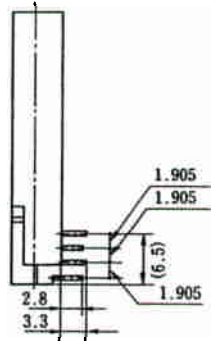
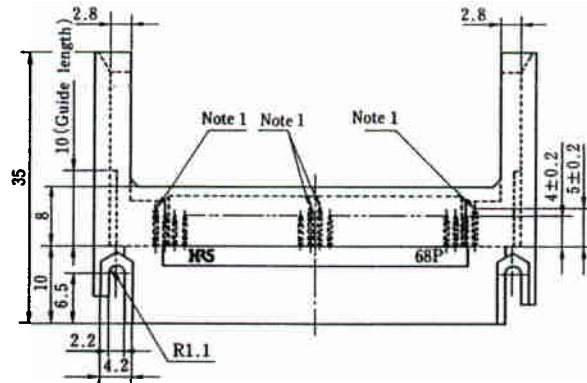
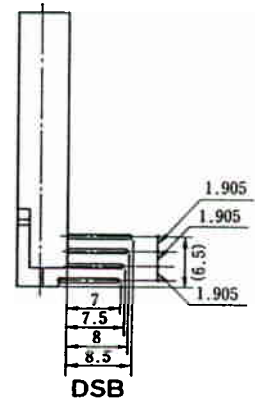
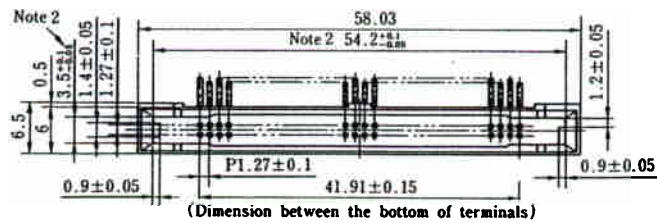


■ Dimensions of Pin Header

Products conforming to JEIDA Version 3



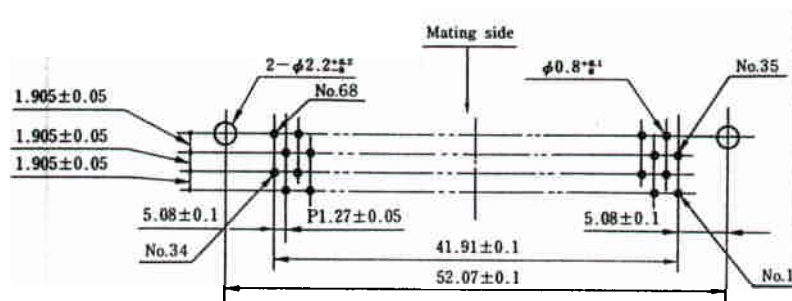
IC1-68PD-1.27DS
CL640-0002-4



HRS NO.	Name
CL640-0002-4	IC1-68PD-1.27DS
CL640-0005-2	IC1-68PD-1.27DSB

- Note 1. Number of sequence terminals is 8 (eight), which is the sum of both ends and the middle section.
2. This dimension applies up to 10mm from the bottom.

■ Dimensions of Backboard (Packaged Surface side)



Products conforming to JEIDA Version 4



IC1FA-68PD-1.27DS
CL640-0016-9

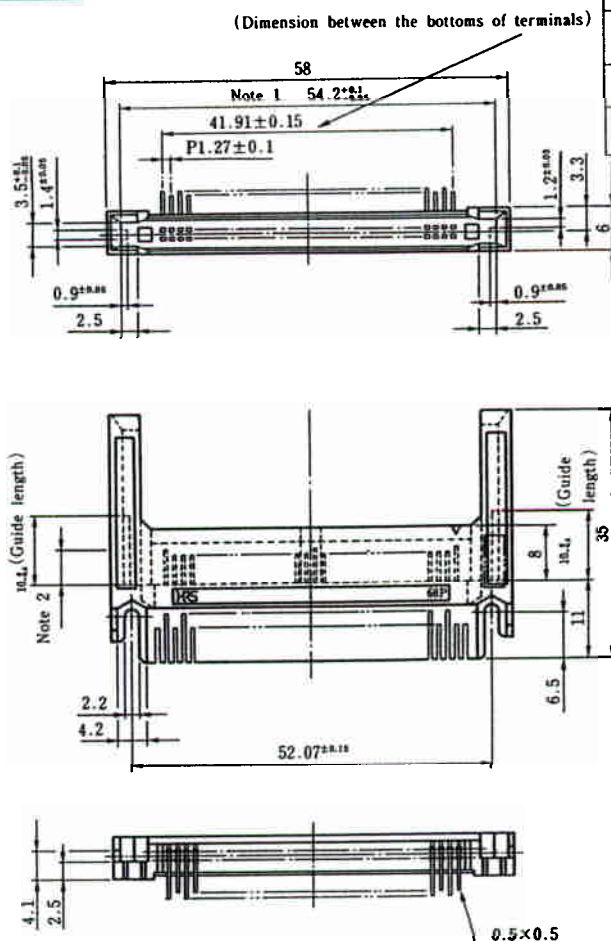


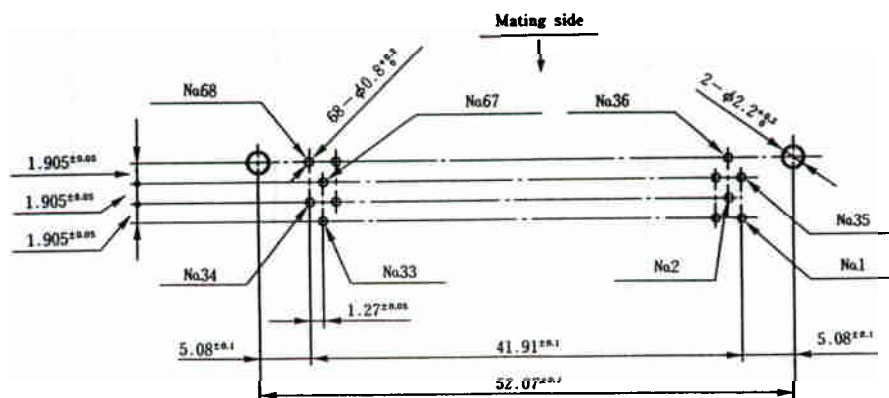
Table 1

Terminal No.	Terminal length
1, 17, 34, 35, 51, 68	5.0 ^{±0.1}
36, 67	3.5 ^{±0.1}
Others than listed above	4.25 ^{±0.1}

Note 1. This dimension applies up to 10mm from the bottom.

Note 2. Dimension of the mating side terminal shall be as shown in Table 1.

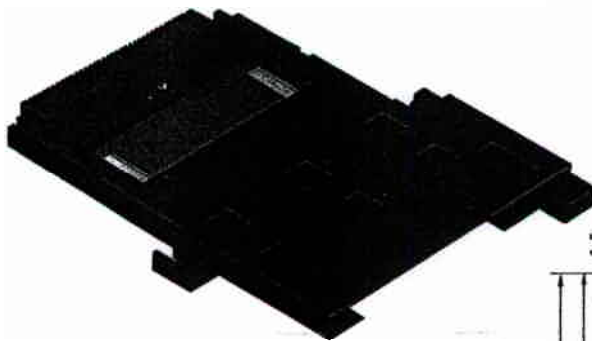
■ Dimensions of Backboard (Packaged Surface side)



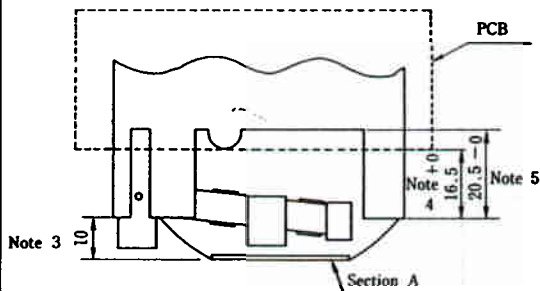
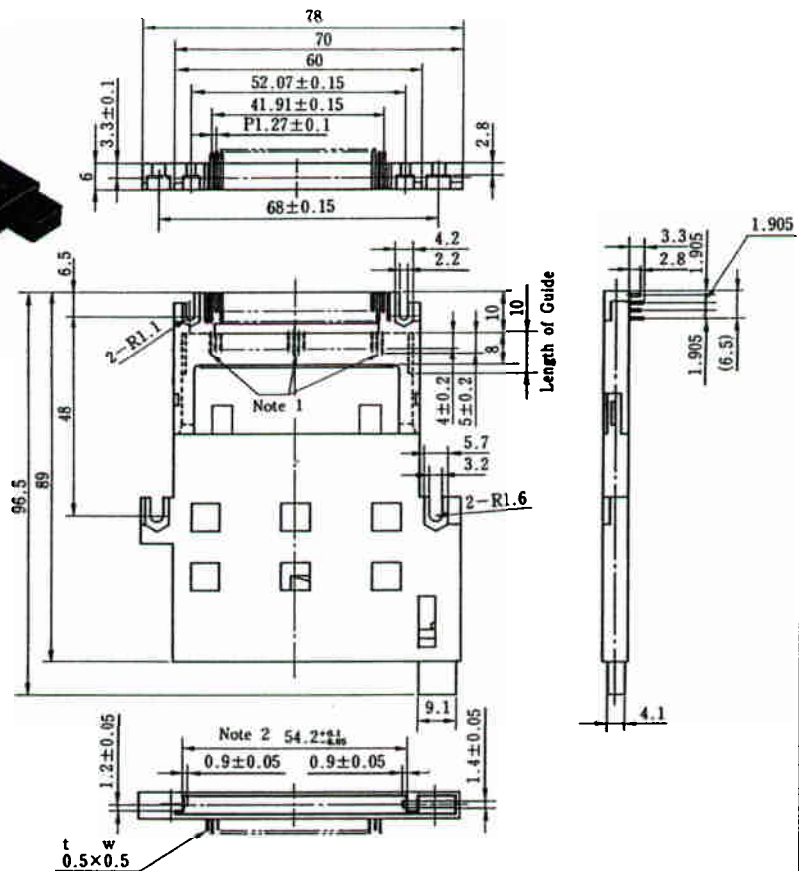
■ Dimensions of Pin Header

Products conforming to JEIDA Version 3

Equipped with Ejecting Mechanism

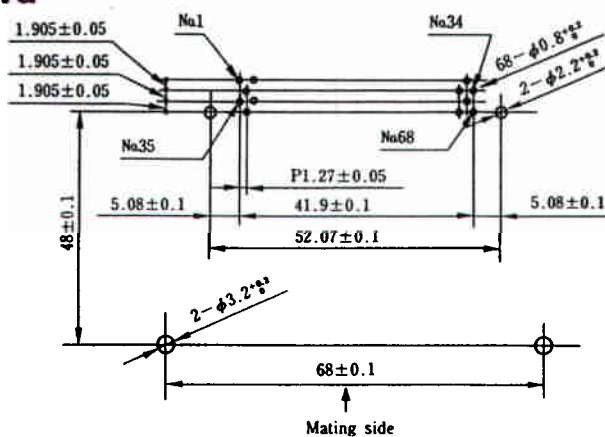


IC1E-68PD-1.27DS-EJ
CL640-6001-4



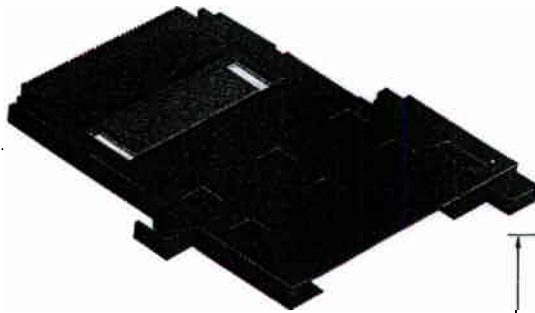
- Note 1. Number of sequence terminals is 8 (eight), which is the sum of both ends and the middle section.
 Note 2. This dimension applies up to 10mm from the bottom.
 Note 3. Section A shall emerge 10mm at the maximum from the ejecting section.
 Note 4. Circuit board should extend to as far as to a position which accommodates 16.5 +0 dimension.
 Note 5. No circuit board pattern within 20.5 -0 dimension.
 Note 6. Applicable card thickness is only 3.3mm ± 0.1mm (type I).

■ Dimensions of Backboard (Packaged surface side)



Products conforming to JEIDA Version 4

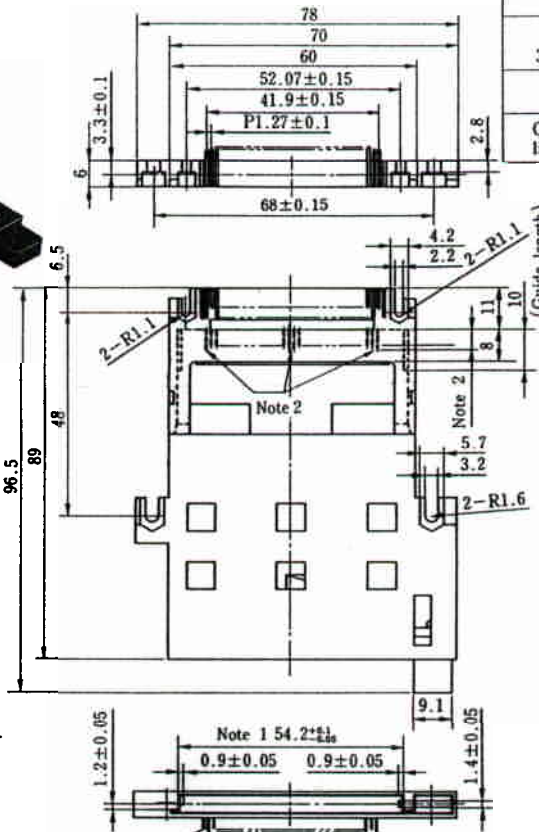
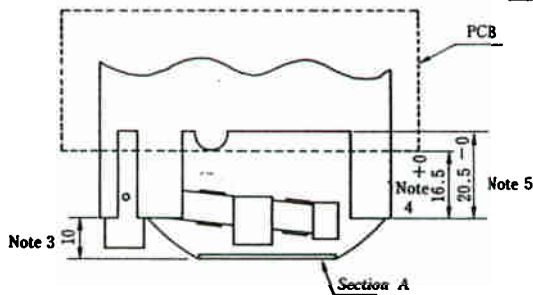
Equipped with Ejecting Mechanism



IC1F-68PD-1.27DS-EJ
CL640-0015-6

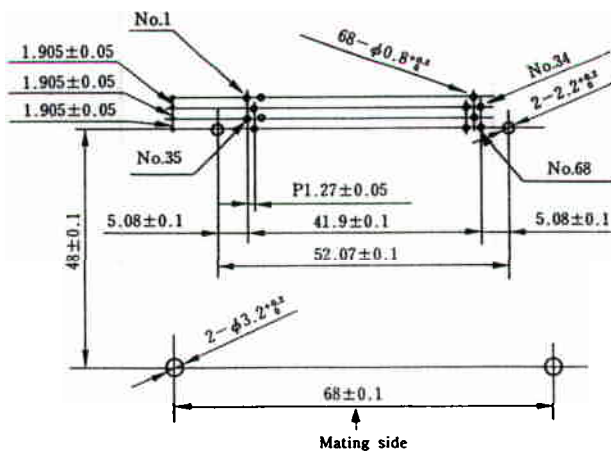
Table 1

Terminal No.	Terminal length
1, 17, 34, 35, 51, 68	5.0 ± 0.1
36, 67	3.5 ± 0.1
Others than listed above	4.25 ± 0.1



- Note 1. This dimension applies up to 10mm from the bottom.
 Note 2. Dimension of the mating side terminal shall be as shown in Table 1.
 Note 3. Section A shall emerge 10mm at the maximum from the ejecting section.
 Note 4. Circuit board should extend to as far as to a position which accommodates $16.5 +0$ dimension.
 Note 5. No circuit board pattern within $20.5 -0$ dimension.
 Note 6. Applicable card thickness is only $3.3\text{mm} \pm 0.1\text{mm}$ (type I).

Dimensions of Backboard (Packaged surface side)



Products conforming to JEIDA Version 4

Equipped with Ejecting Mechanism
& Stand-off
Applicable to type I & II



IC1FB-68PD-1.27DS-EJ
CL640-0018-4

● Back face

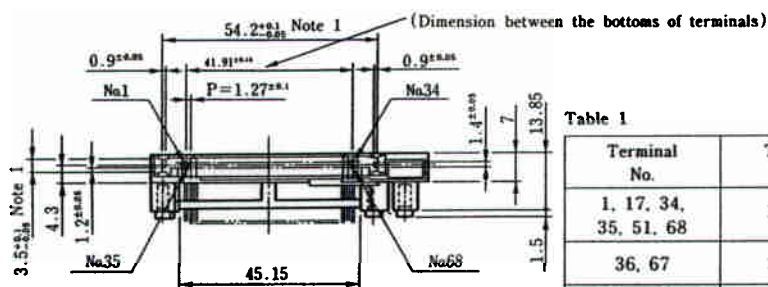
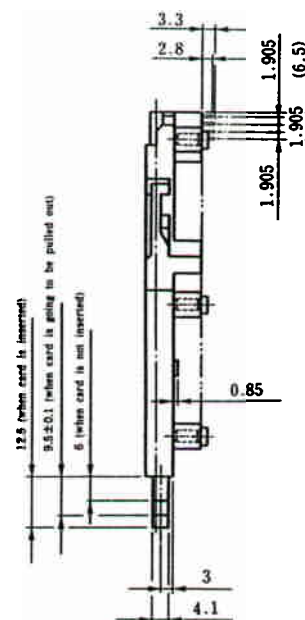
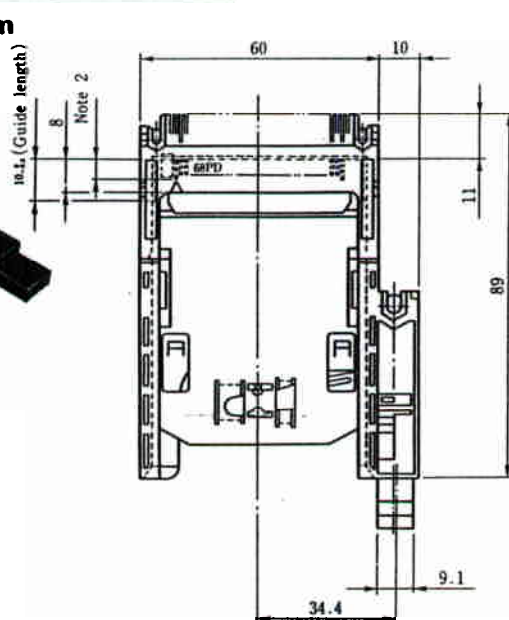
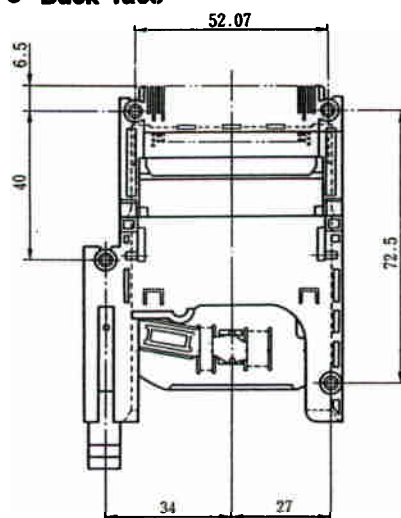
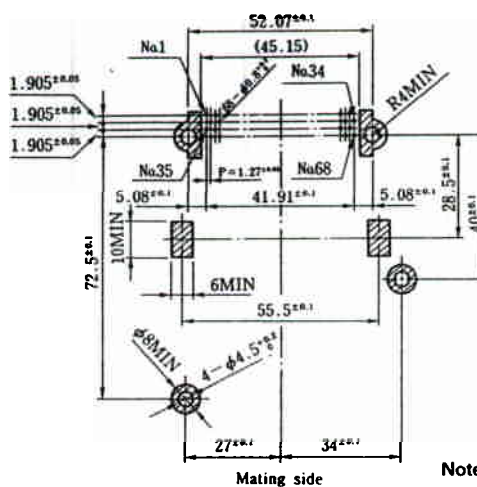


Table 1

Terminal No.	Terminal length
1, 17, 34, 35, 51, 68	5.0±0.1
36, 67	3.5±0.1
Others than listed above	4.25±0.1

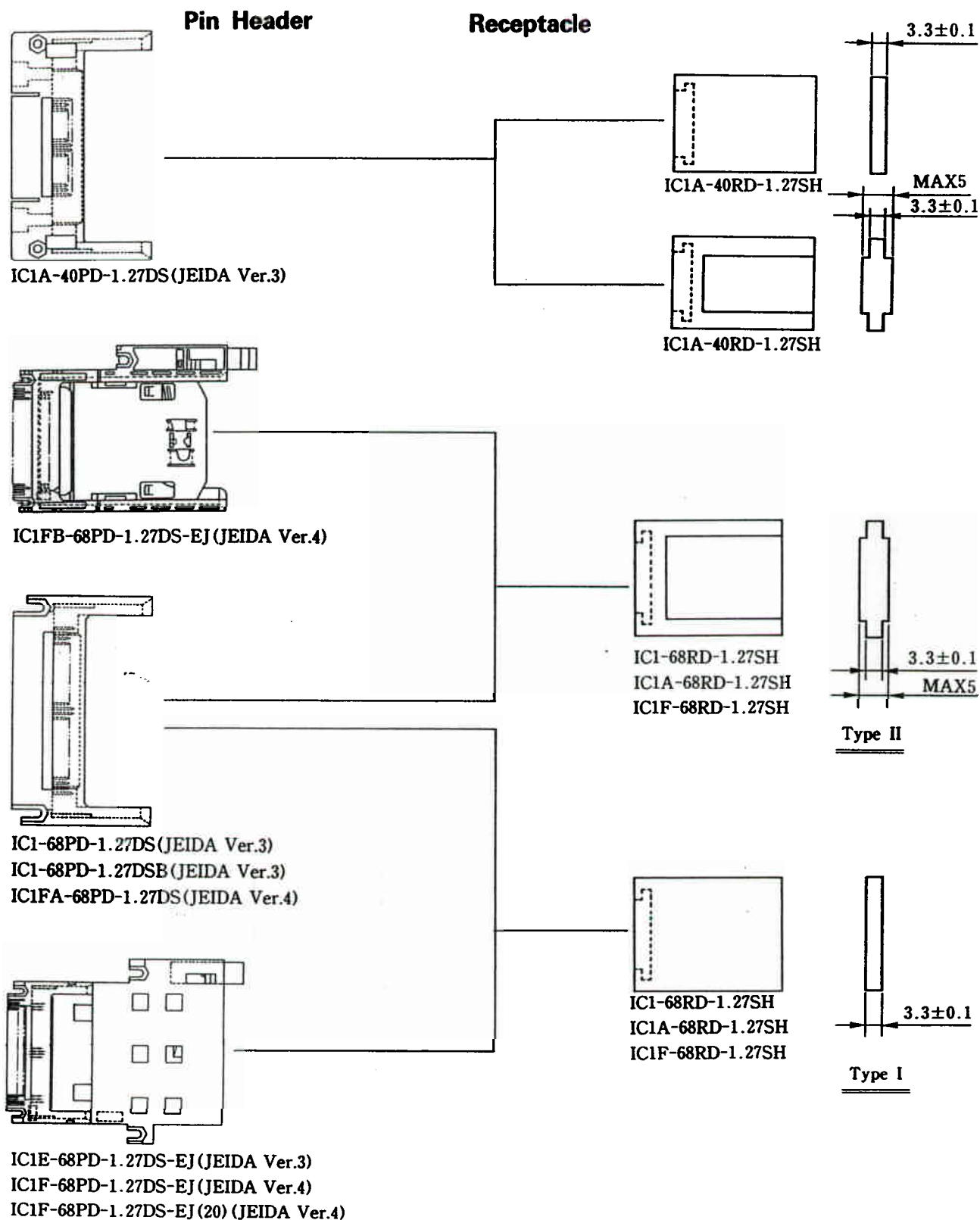
- Note 1. This dimension applies up to 10mm from the bottom.
 2. Dimension of the mating side terminal shall be as shown in Table 1.
 3. Tapping screw is second category of JIS-B-1007 and tapping screw diameter is 3mm.
 Tapping screw should pass through PCB and length from PCB (B face) to the screw top should be 5~6mm.

◆ Dimensions of Backboard (Packaged surface side)



Note: Oblique line is no circuit pattern area.

Varieties of IC1 series



Note : The dimensions of outline, etc., of Cards shall conform to JEIDA standard (Ver. 3 or Ver. 4).

MEMO :



HIROSE ELECTRIC CO.,LTD.

5-23, OSAKI 5-CHOME, SHINAGAWA-KU, TOKYO 141, JAPAN

TELEX: J2468237 HRSELE TELE FAX: 03-3493-2933

CABLE: BESELECONHIROSE TOKYO, PHONE: 03-3491-9741
