

Power Supplies

DC to AC Inverters

For 1 Bulb, 4W Diming

CXA Series CXA-L0624-VJL

These DC to AC inverter units are designed for dimming-type cold cathode lamps used for lighting 6 to 12 inch glass LCD panels.

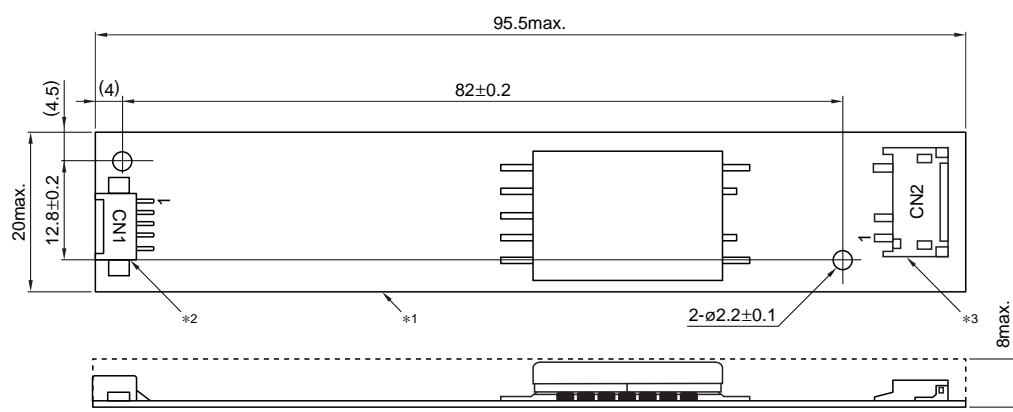
FEATURES

- Use of output current control avoids effects resulting from input voltage, load, and distributed capacitance variation.
- Avoids problems such as damage and heating due to an output circuit that is open or shorted.
- Safe design that includes a built-in overcurrent protection element.

TEMPERATURE AND HUMIDITY RANGES

Temperature range	Operating	0 to +50°C
	Storage	–20 to +85°C
Humidity range		95(%)RH max.
		[Maximum wet-bulb temperature:38°C]

SHAPES AND DIMENSIONS



*1 Substrate(PWB: Printed wiring board) : Inflammable material 94V-0(FR-4 or CEM-3) t=1mm

*2 Input connector CN1: Molex Japan Co., Ltd. 53261-0510

*3 Output connector CN2: Japan Solderless Terminal Co., Ltd. SM02(8.0)B-BHS-1

Weight: 14.5g typ.

Dimensions in mm

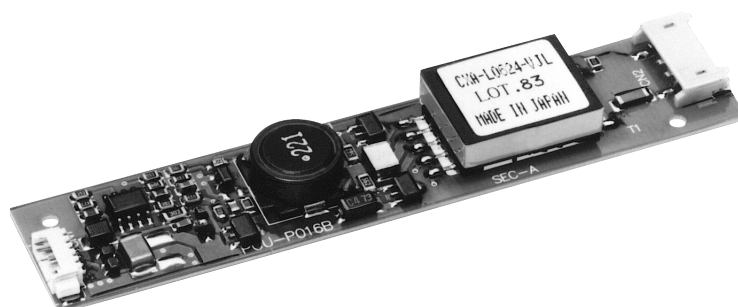
TERMINAL NUMBERS AND FUNCTIONS

CN1

Terminal No.	Functions
CN1-1	Vin Input voltage Edc:21.6 to 26.4V
CN1-2	GND 0V
CN1-3	Vrmt Remote voltage Edc:0/5 to 26.4V[5 to 26.4V operating]
CN1-4	Vbr Brightness dimmer voltage Edc:0 to 3V [0V maximum brightness]
CN1-5	NC Do not connect. Used by internal circuitry.

CN2

Terminal No.	Functions
CN2-1	VHIGH Output [High voltage] Irms:3 to 6mA
CN2-2	NC
CN2-3	VLOW Output [Low voltage] : (2V)



Power Supplies

DC to AC Inverters

For 1 Bulb, 4W Diming

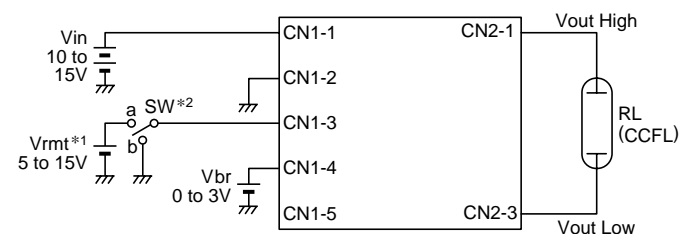
CXA Series CXA-L0624-VJL

ELECTRICAL CHARACTERISTICS

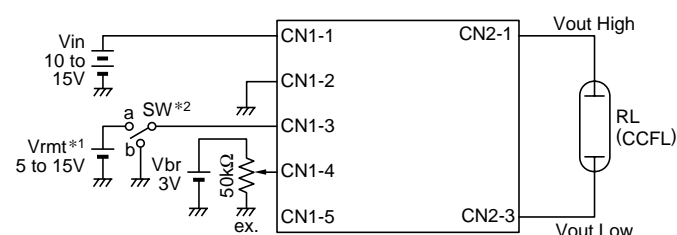
Item			Specifications			Conditions				Brightness
			min.	typ.	max.	Vin(V)	Vbr(V)	Ta(°C)	RL(kΩ)	
Output current	Irms(mA)	Iout	5.4	6	6.6	21.6 to 26.4	0	0 to +50	90 to 110	Maximum
			5.4	6	6.6	24	0	23±5	100	Maximum
			2.7	3	3.3	21.6 to 26.4	3	23±5	226	Minimum
Input current	Idc(A)	Iin	—	TBD	TBD	24	0	0 to +50	90 to 110	
Oscillation frequency	(kHz)	FL	TBD	45	TBD	21.6 to 26.4	0	0 to +50	90 to 110	
Open circuit output voltage	Erms(V)	Vopen	1400	1500	—	21.6 to 26.4	0	0 to +50	∞	
Output power	(W)	Pout	—	—	4	21.6 to 26.4	0	0 to +50	90 to 110	

TYPICAL CONNECTIONS

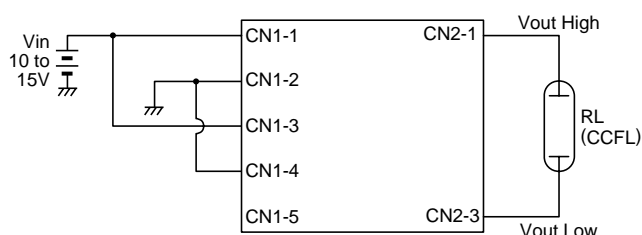
EXAMPLE OF VOLTAGE DIMMER CONTROL



EXAMPLE OF POTENTIOMETER DIMMER CONTROL



NO DIMMER CONTROL



*1 Vrmr (remote voltage) shall be ON after Vin was ON.

*2 SW a:ON, b:OFF

OUTPUT CURRENT vs. BRIGHTNESS DIMMER VOLTAGE CHARACTERISTICS

