

Model F15 Backlighting Option

PN 43599

The F15 backlighting option provides improved visibility for displays installed indoors or used in darkness. To install this option, do the following:

1. Disconnect power to the remote display.
2. Open the cover and remove the two screws from the hinged flip digit mounting panel, then lower the panel.



Caution

Use a wrist strap to ground yourself and protect components from electrostatic discharge (ESD) when working inside the remote display enclosure.

3. Remove the keps nuts from the channel bracket and ballast assembly. Attach the channel bracket and ballast assembly to the base plate with the closed side of the channel bracket toward the enclosure.
4. Attach fuse holder to base plate next to ballast. Install fuse, then slide a cable tie under the fuse. Install fuse cover and secure with cable tie. Use another cable tie to secure the wire between the terminal block and the fuse holder to the existing cable tie mount.
5. Remove plastic cover from AC power terminal, then remove the screws that hold the wires going to the power supply board.
6. Attach white wire from ballast and black wire from fuse holder as shown in Figure 1. Insert the lock washers provided between the wire pairs.

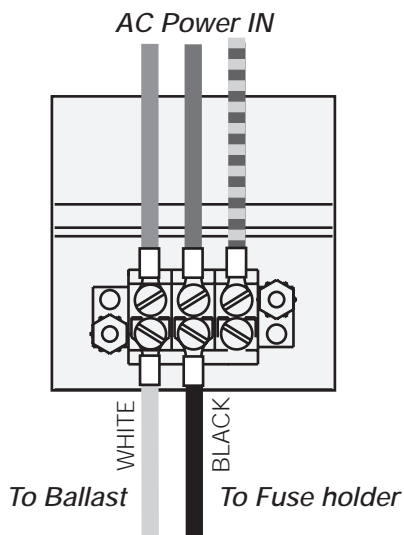


Figure 1. Power Connection for Backlighting Option

7. Tighten screws and replace plastic cover on power terminal. Secure wires with a cable tie.
8. Route wires from terminal block to bulb socket locations as shown in Figure 2. Install cable ties to secure wires at each corner bracket and to the lower left standoff. Use two cable ties and cable tie mounts to secure the cable to the mounting panel above the flip digit board.

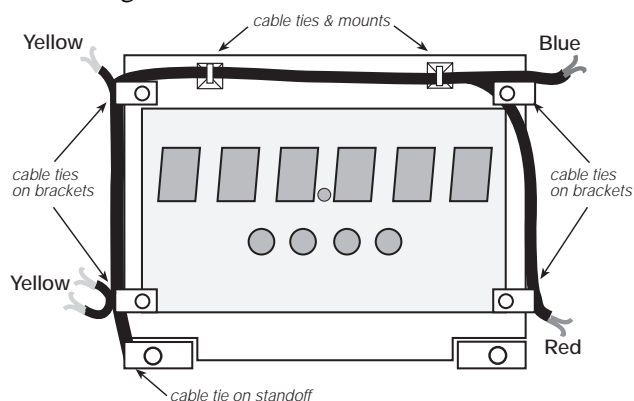


Figure 2. Cable Routing for Bulb Sockets

9. Install bulb sockets on corner brackets of mounting panel.
10. When done, reinstall screws to secure the flip digit mounting panel.
11. Install fluorescent bulbs in bulb sockets.

Figures 3 and 4 on the back of this sheet provide detailed views of the terminal block wiring.

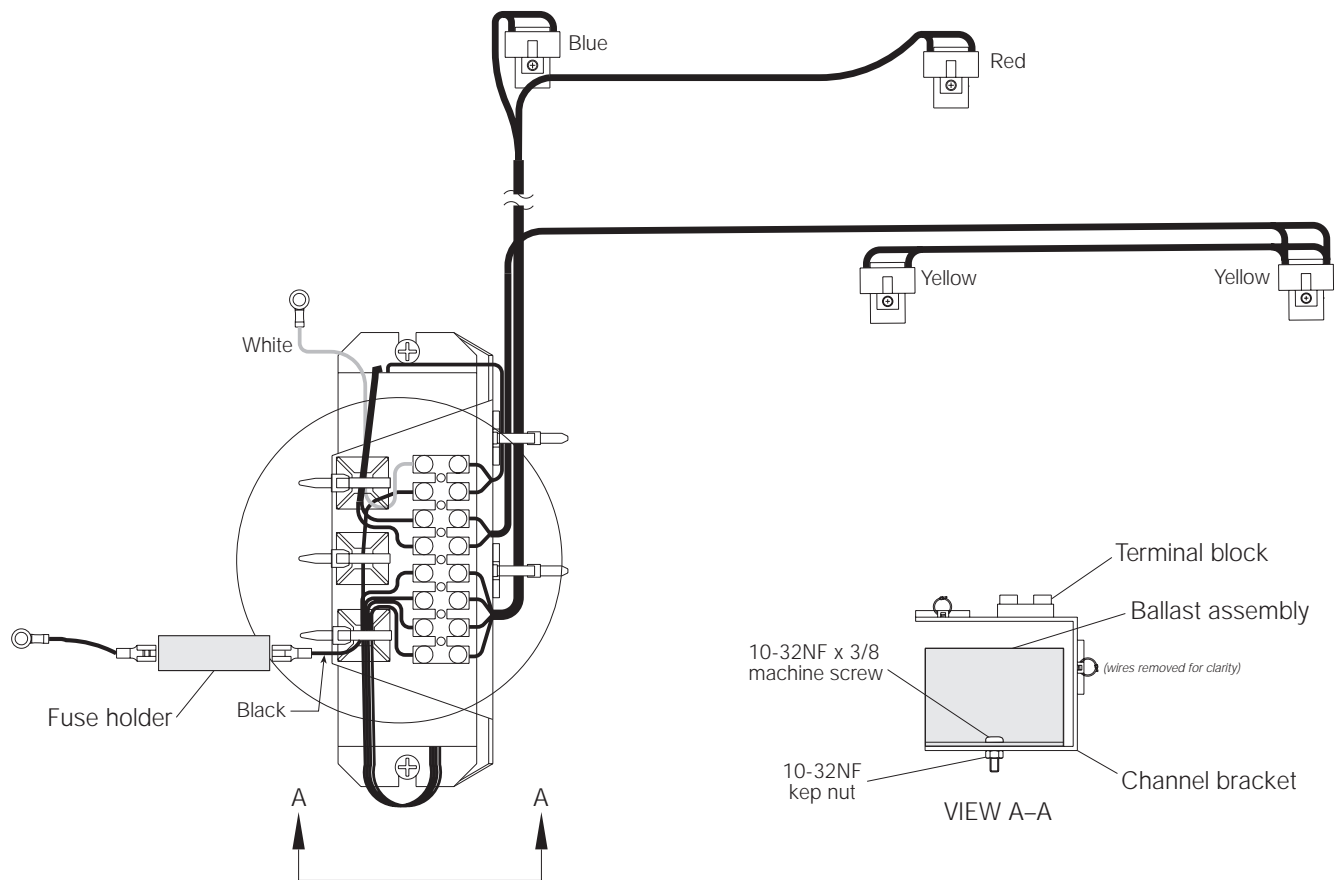


Figure 3. Model F15 Backlighting Assembly Wiring

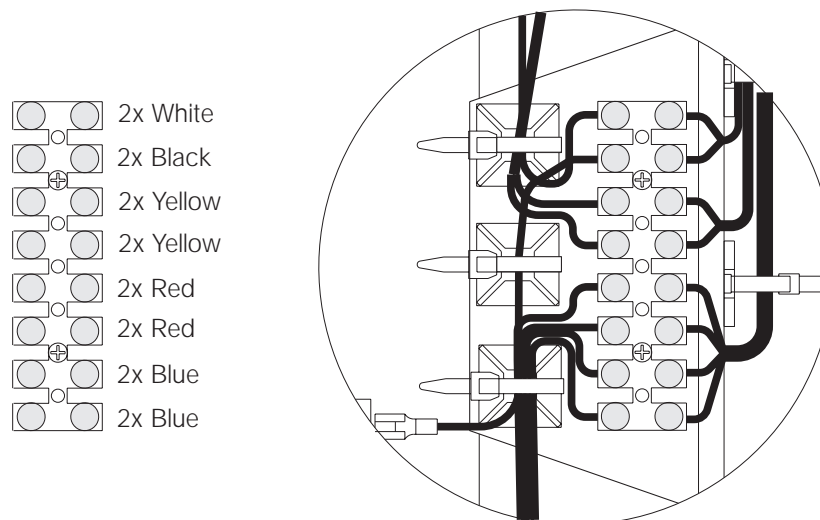


Figure 4. Model F15 Terminal Block Wiring