

## START/STOP/RUN Batching Switch

The Batching Switch option comes as a complete unit with legend plate, locking stop button, and run/start/abort 3-way switch. With the SS and HE models, the unit can be mounted directly on the face of the case by drilling 7/8" holes for the two switches. The Desktop model has insufficient room for switches on the case, and a special FRP case is available for mounting the switch unit remotely. The remote mounting kit includes case, 5 feet of cable, and O-ring and cord grip for sealing. Either mounting method is waterproof and maintains a NEMA 4X rating.

Both switches are wired into the indicator's digital output connection terminal according to the wiring diagram below. Each switch requires a separate digital input, leaving one of the IQ plus 810's original three digital inputs available for other use.

After the switches are mounted and wired, the IQ plus 810's software must be configured for the correct digital input functions. Detailed configuration instructions are found on the following page.

The Batching Switch is designed for safety and ease and speed of operation, yet is flexible enough to allow choices when restarting a halted batch. Three general principles govern the operation of the switches:

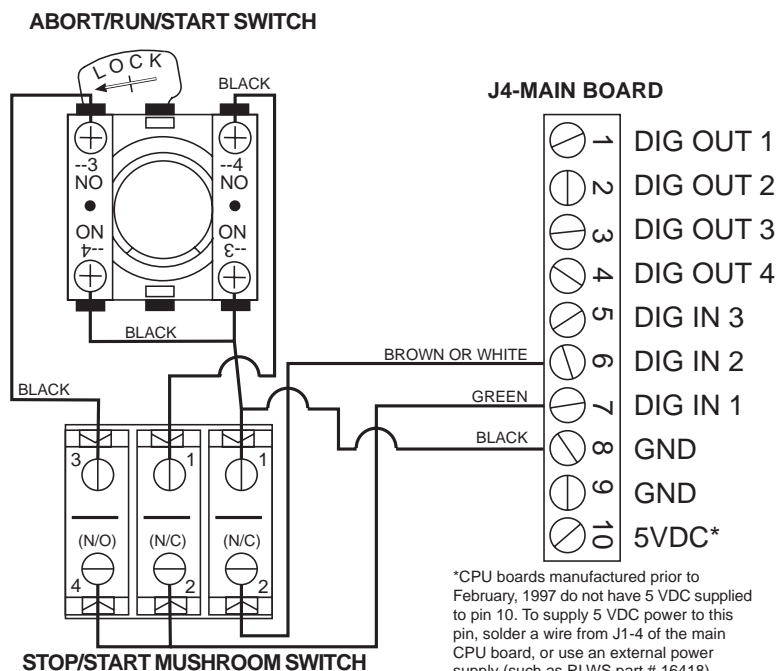
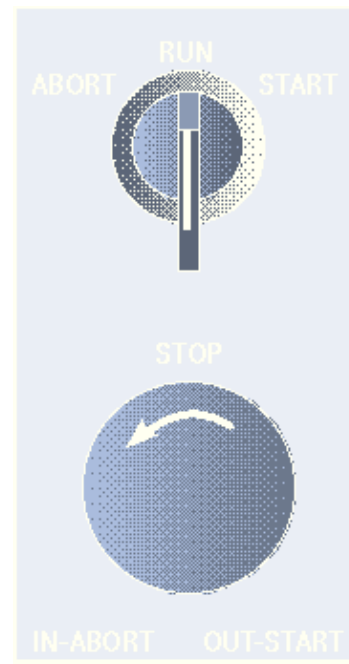
- The red STOP button must be in the OUT position to allow the batch process to run. To begin a batch process, the 3-way switch must momentarily be turned to START. If the STOP button is pushed during the batch process, the process halts and the button locks in the IN position. Turning the 3-way switch to START while the STOP button is locked IN will be ignored. The STOP button must be turned counterclockwise to unlock it, and release it into the OUT position.
- When the STOP button is used to halt a batching operation, the operation will continue where it left off by:
  1. Unlocking STOP button to OUT.
  2. Turning 3-way switch to START.
- When the STOP button is used to initialize or halt a batch—or a power failure occurs—the operation must be reset (aborted and returned to the first step) by:
  1. Turning 3-way switch to ABORT before unlocking STOP button.
  2. Unlocking STOP button to OUT.
  3. Turning 3-way switch to START.

**NOTE:** Anytime setpoint configuration is changed, the above reset sequence must be done to initialize the new batch routine.



**Caution**

If a power failure occurs during a batch sequence, the sequence must be reset. You cannot resume the batch from the point of the power failure.



\*CPU boards manufactured prior to February, 1997 do not have 5 VDC supplied to pin 10. To supply 5 VDC power to this pin, solder a wire from J1-4 of the main CPU board, or use an external power supply (such as RLWS part # 16418).

## Configuring the Batching Switch Option

When the hardware switches and wires are completed, place the indicator in the setup mode using SW1 on the Main CPU Board. Under the main level menu, DIG IN, move down under DIG IN 1 and select BATSTRT as the digital input 1 default. Then move down under DIG IN 2 and select BATRUN as the digital input 2 default. Place the unit back into the normal weighing mode when the digital input configuration above is completed.

Be certain to initialize the batch sequence with the reset sequence found on the previous page.

