

Two-Card Expansion Board Installation Instructions

PN 69782 and 71743

This document contains procedures for installing two-card expansion boards in the wall and panel mount models of 920i indicators. Procedures for each enclosure type are described separately below.

See the *Installation Manual*, PN 67887, for general installation and configuration information, including option card slot numbering and port assignments.

NOTE: The slot/location jumper on the two-card expansion board must be set to the 3–4 position for all standard installations. The 9–10 position is used only in special applications using both six- and two-card expansion boards.



Warning

Disconnect power before opening indicator enclosure.



Caution

Option cards are not hot-pluggable. Disconnect power to the expansion board before installing option cards.

Use a wrist strap to ground yourself and protect components from electrostatic discharge (ESD) when working with circuit boards.

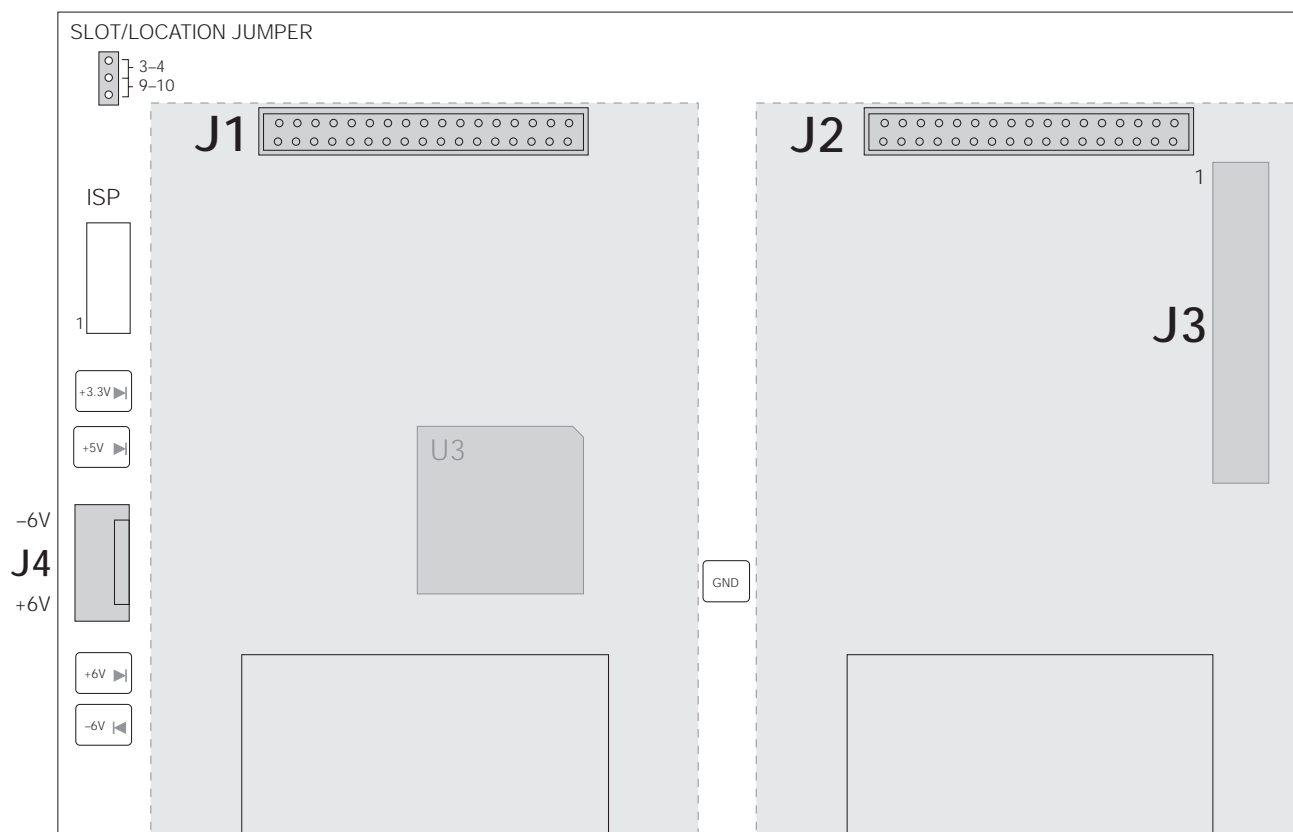


Figure 1. Two-Card Expansion Board

Panel Mount Installation (71743)

Use the following procedure to install the two-card expansion board in the panel mount enclosure. See Figure 2 for locations of option kit components.

1. Disconnect indicator from power source.
2. Remove housing backplate.
3. Install four circuit board supports (PN 71453) from the expansion board kit into the holes along the top edges of the option cards installed on the CPU board.
4. Attach 2-inch ribbon cable to connector J7 on the CPU board.
5. Replace CPU board power supply cable with the cable in the expansion board option kit. Connect to power input connector on CPU board.
6. Remove screws from the bottom edge of the option cards installed on the CPU board. Replace with four 3/4" standoffs (PN 31597).
7. Mount two-card expansion board on circuit board supports. Install four 1/2" standoffs (PN 71452).
8. Attach ribbon cable to connector J3 on the expansion board.
9. Attach power cable to connector J4 on the expansion board.
10. Set the slot/location jumper to the 3-4 position (see Figure 1 on page 1).
11. Install option cards onto expansion board (see page 4).

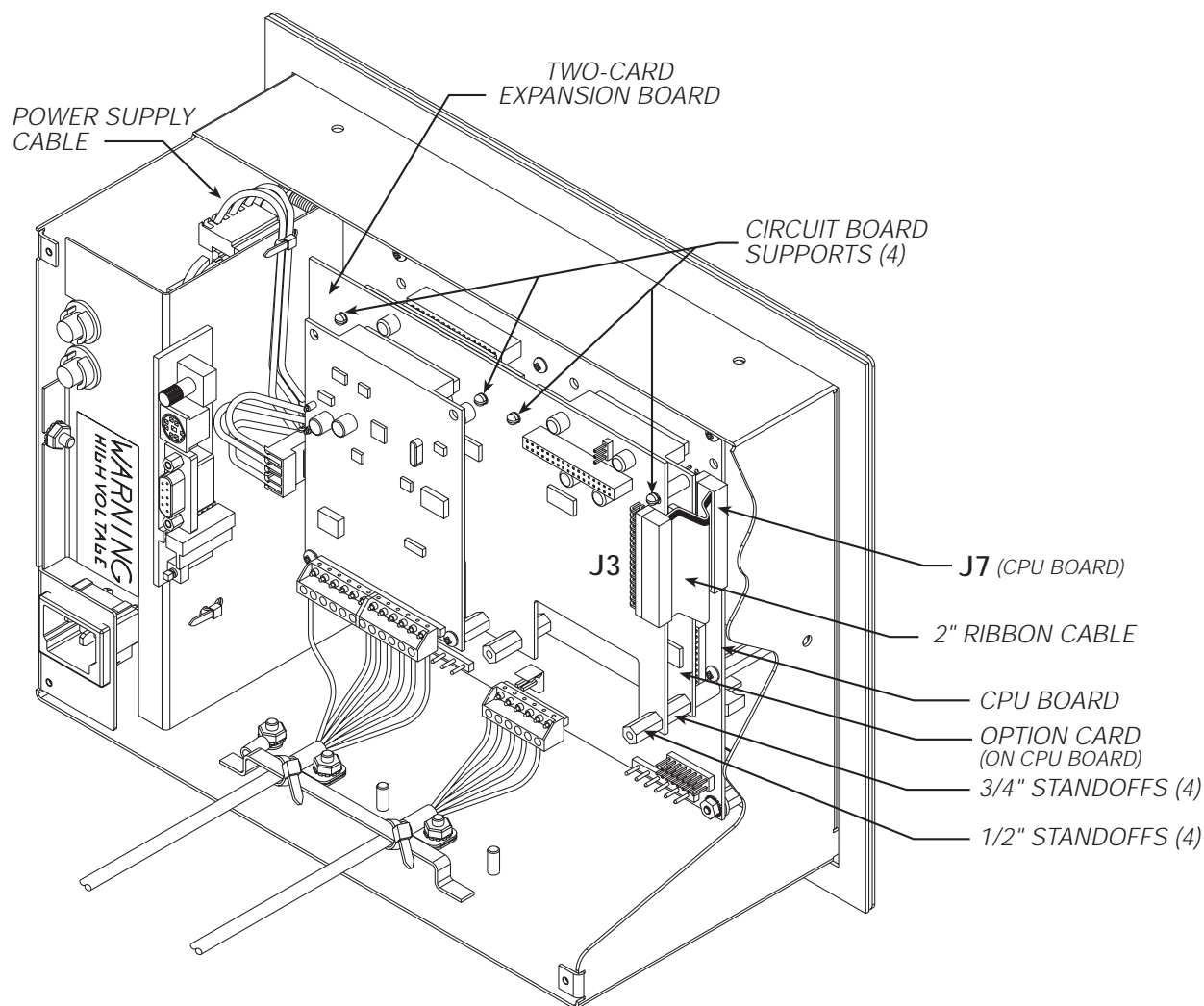


Figure 2. Two-Card Expansion Board Installed in Panel Mount Enclosure

Wall Mount Installation (69782)

Use the following procedure to install the two-card expansion board in the wall mount enclosure. See Figure 3 below and Figure 4 on page 4 for locations of option kit components.

1. Disconnect indicator from power source.
2. Open enclosure.
3. Screw eight 1/2" standoffs (PN 71452) into the holes in the enclosure backplate.
4. Clip the six cable ties that secure the cable assembly from the power supply to the CPU board. Remove CPU board power supply cable and replace with the cable in the expansion board option kit. Connect new cable to power input connector on CPU board.
5. Remove adhesive covering from two ribbon cable clamps and install on door and side wall of enclosure (see Figure 3).
6. Attach ribbon cable to connector J7 on the CPU board. Slide the ribbon cable into the cable clamps and extend cable to full length. (Ribbon cable attaches to right side of installed expansion board. See Figure 4 on page 4).
7. Mount two-card expansion board on installed standoffs. (Ensure that ribbon cable is routed under the expansion board and extends to the right of the board.) Use four 1/4" screws (PN 14822) to secure board to standoffs.
8. Install four 1/2" standoffs (PN 71452) onto the expansion board to support option cards.
9. Attach ribbon cable to connector J3 on the expansion board.
10. Attach power cable to connector J4 on the expansion board.
11. Set the slot/location jumper to the 3-4 position (see Figure 1 on page 1).
12. Install option cards onto expansion board (see page 4). Use the supplied cable ties to secure all loose cables inside the enclosure.

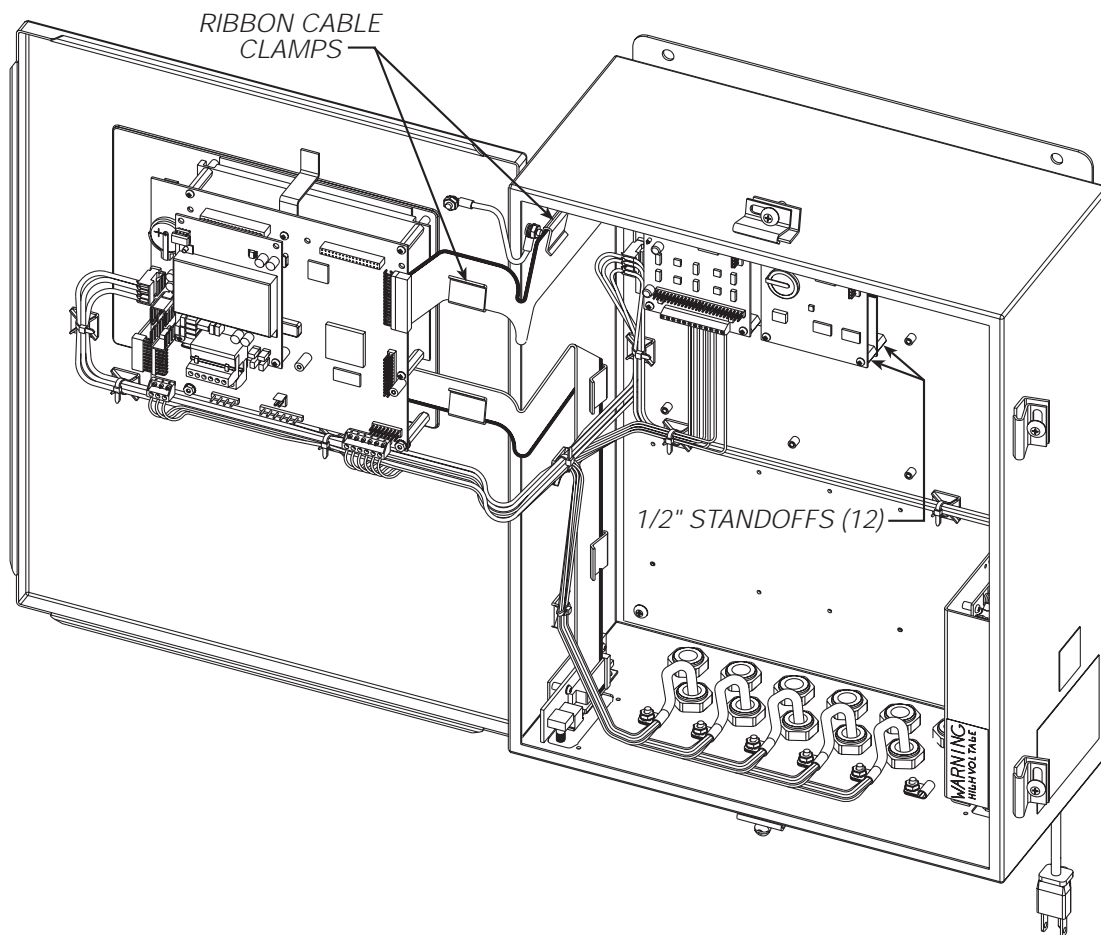


Figure 3. Two-Card Expansion Board Installed in Wall Mount Enclosure, Isometric View

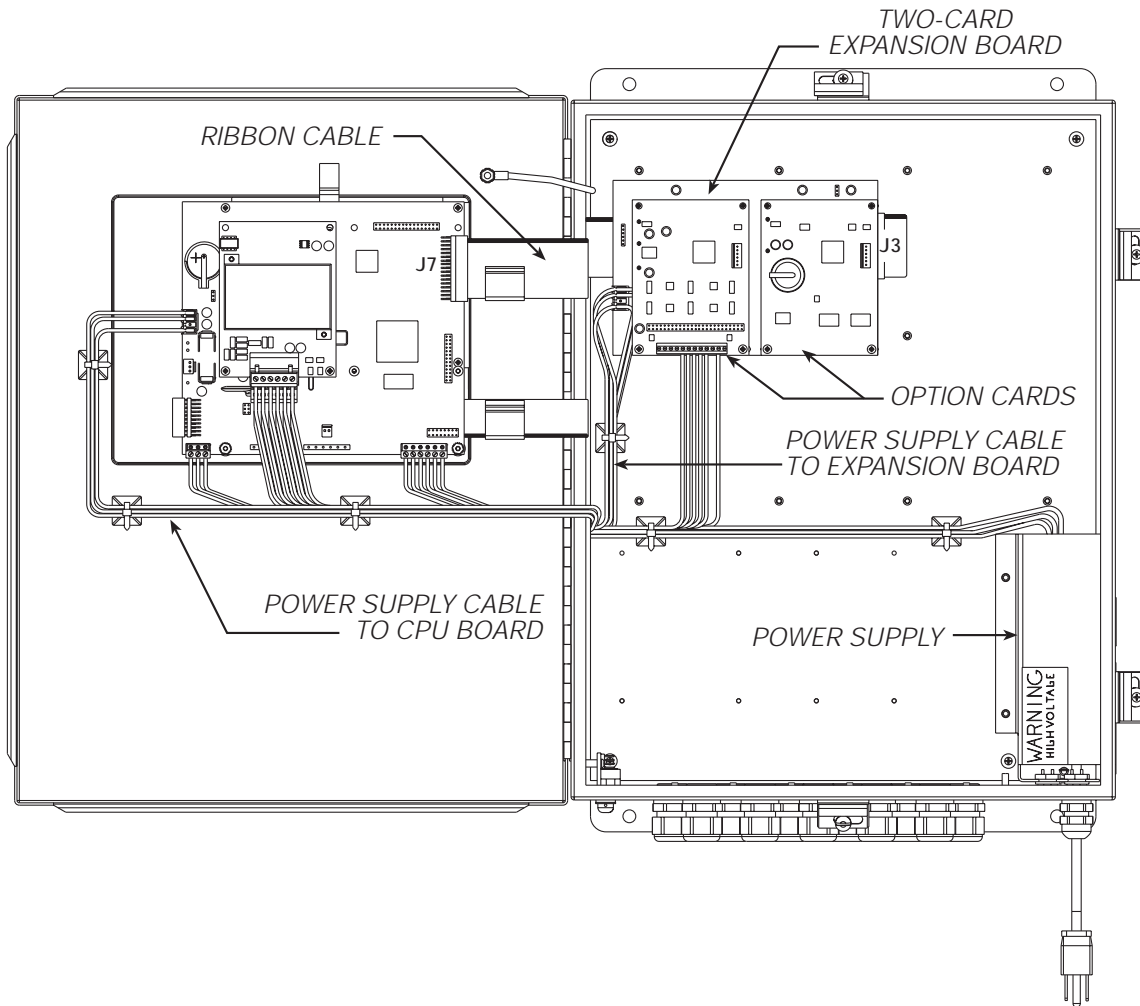


Figure 4. Two-Card Expansion Board Installed in Wall Mount Enclosure

Installing Option Cards

Each option card is shipped with installation instructions specific to that card. The general procedure for all option cards is as follows:

NOTE: Option cards are not hot-pluggable. Disconnect power to the 920i before installing option cards.

1. Carefully align the large option card connector with connector J1 or J2 on the expansion board. Press down to seat the option card in the expansion board connector.
2. Use the screws provided in the option kit to secure the other end of the option card to the threaded standoffs on the expansion board.
3. Make connections to the option card as required. Use cable ties to secure loose cables inside the enclosure.
4. When installation is complete, reassemble the enclosure and reconnect power to the indicator.

The 920i automatically recognizes all installed option cards when the unit is powered on. No hardware-specific configuration is required to identify the newly-installed card to the system.