

# Wall Mount Enclosure Installation Instructions

PNs 69763, 69765, 69770, 69776, 72133, 72134

This document contains drawings, replacement parts lists, and instructions for installing wall mount models of 920i indicators. See the *920i Installation Manual*, PN 67887, for general installation and configuration and calibration information.

Figure 1 shows the outside dimensions of the wall mount enclosure.



## Warning

*The 920i has no on/off switch. Before opening the unit, ensure the power cord is disconnected from the power outlet.*



## Caution

- Use a wrist strap to ground yourself and protect components from electrostatic discharge (ESD) when working inside the indicator enclosure.
- This unit uses double pole/neutral fusing which could create an electric shock hazard. Procedures requiring work inside the indicator must be performed by qualified service personnel only.
- The supply cord serves as the power disconnect for the 920i. The power outlet supplying the indicator must be installed near the unit and be easily accessible.

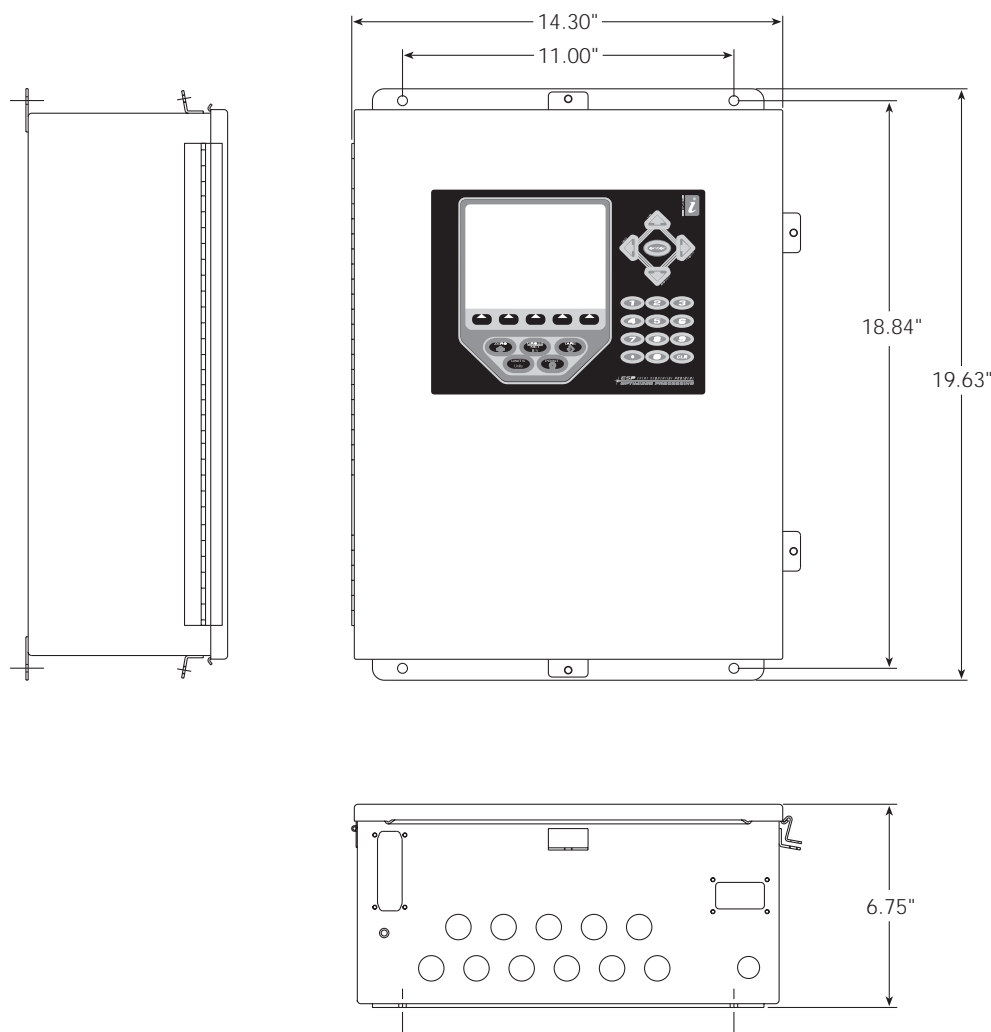


Figure 1. Wall Mount Enclosure Dimensions

Wall mount models of the **920i** provide eleven cord grips for cabling into the indicator. The parts kit includes cord grip plugs to prevent moisture from entering the enclosure. Install these plugs into all cord grips that will be not be used in your application. Use the cable grounding instructions below for wiring into the indicator.

### Cable Grounding

Cables routed through the cord grips should be grounded against the indicator enclosure. Do the following to ground shielded cables:

- Use the lockwashers, clamps, and keps provided in the parts kit to install grounding clamps on the enclosure studs adjacent to cord grips. Install grounding clamps only for cord grips that will be used; do not tighten nuts.
- Route cables through cord grips and grounding clamps to determine cable lengths required to reach cable connectors. Mark cables to remove insulation and shield as described below:
  - For cables with foil shielding, strip insulation and foil from the cable half an inch (15 mm) past the grounding clamp (see Figure 2). Fold the foil shield back on the cable where the cable passes through the clamp. Ensure silver (conductive) side of foil is turned outward for contact with the grounding clamp.
  - For cables with braided shielding, strip cable insulation and braided shield from a point just past the grounding clamp. Strip another half inch (15 mm) of insulation *only* to expose the braid where the cable passes through the clamp.

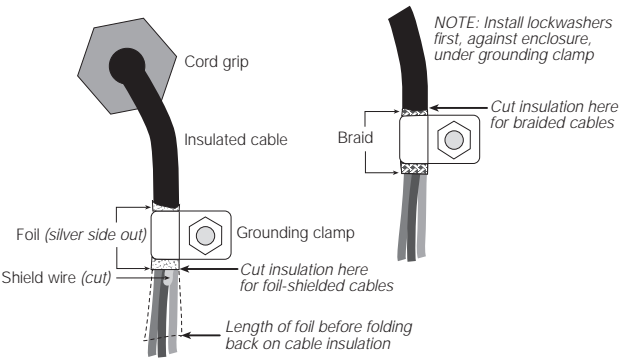


Figure 2. Grounding Clamp Attachment for Foil-Shielded and Braided Cabling

- For load cell cables, cut the shield wire just past the grounding clamp. Shield wire function is provided by contact between the cable shield and the grounding clamp.
- Route stripped cables through cord grips and clamps. Ensure shields contact grounding clamps as shown in Figure 2. Tighten grounding clamp nuts.
- Finish installation using cable ties to secure cables inside of indicator enclosure.

### Power Specifications

Line Voltages	115 or 230 VAC
Frequency	50 or 60 Hz
Maximum Power Consumption,	65W on secondary
Primary power consumption:	100W TRMS
Constant current:	1.5 A TRMS (115VAC); 1.0 A TRMS (230VAC)
Fusing	
115 VAC and 230 VAC North American	2 x 3.15A TR5 subminiature fuses Wickmann Time-Lag 19374 Series UL Listed, CSA Certified and Approved
230 VAC European	2 x 3.15A TR5 subminiature fuses Wickmann Time-Lag 19372 Series UL Recognized, Semko and VDE Approved

See the **920i Installation Manual** for additional specifications.

### Parts Kit Contents

Table 1 lists the parts kit contents for wall mount models of the **920i**.

PN	Description
14626	Kep nuts, 8-32NC (6)
15133	Lock washers, No. 8, Type A (6)
15631	Cable ties (4–single A/D, 6–dual A/D)
15665	Reducing glands for 1/2 NPT cord grips (11)
15887	6-position screw terminal for load cell connection (1–single A/D, 2–dual A/D)
19538	Cord grip plugs (10–single A/D, 9–dual A/D)
42350	Capacity label (1–single A/D, 2–dual A/D)
53075	Cable shield ground clamps (6)
70599	6-position screw terminals for J2 and J10 (2)
71125	3-position screw terminal for J11 (1)
71126	4-position screw terminal for J9 (1)


Table 1. Parts Kit Contents

## Replacement Parts and Assembly Drawings

Table 2 lists replacement parts for the *920i* desktop and universal models, including all parts referenced in Figures 3 through 6.

Ref Number	PN	Description (Quantity)	See Figure No.
1	68902	Enclosure, wallmount (1)	3
2	68598	Protective lens (1)	
3	67614	LCD display (1)	
4	15134	Lock washers, No. 8, Type A (3)	
5	14626	Kep nuts, 8-32NC (3)*	
6	15601	Ground wire, 6 in w/ No. 8 eye connector (1)	
7	53308	Model/serial number label (1)	
9	67795	Power cord assembly, 115 VAC and 230 VAC North American units (1)	
	69998	Power cord assembly, 230 VAC European units (1)	
10	68425	Fuse access coverplate (1)	3
11	14845	Machine screws, 6-32NC x 3/8 phillips (8)	
12	45042	Sealing washers (8)	
13	14822	Machine screws, 4-40NC x 1/4 (11)	
14	69538	Power supply bracket (1)	
15	14621	Kep nut, 6-32NC (1)	
16	15630	Lock nuts for 1/2 NPT cord grips (11)	
17	67530	Interface board connector plate (1)	
18	67535	Interface board gasket (1)	
19	67869	Interface board (1)	
21	14875	Machine screws, 10-32NF x 3/8 phillips (4)	
22	15140	Lock washers, No. 10 Type A (4)	
23	46192	Ribbon cable clamps (3)	
24	68661	Standoffs, long (2)	
25	69898	Nylon spacers (2)	
26	14618	Kep nuts, 4-40NC (2)	
27	15631	Cable tie, 3-in nylon (6)*	
28	71431	Power supply cable assembly, to CPU board (1)	
29	71436	Ribbon cable to interface board (1)	
30	67886	Standoffs, short (4)	
37	32365	Setup switch access screw, 1/4 x 20NC x 1/4 (1)	4
38	59250	Sealing washer for setup switch access screw (1)	
39	30376	Nylon seal rings for 1/2 NPT cord grips (11)	
40	15628	Cord grips, 1/2 NPT (11)	
42	71447	Machine screws, 1/4-28NF x 3/4 phillips (3)	
43	71462	Fuses F1 & F2 (115 VAC and 230 VAC North American models), 3.15 A Time-Lag TR5 (2)	
	72339	Fuses F1 & F2 (230 VAC European models), 3.15 A Time-Lag TR5 (2)	
44	71333	Power supply, $\pm 6$ VDC, 65W (1)	6
46	70069	3V Lithium coin battery	5
47	67610	Single-channel A/D card (1)	

*Table 2. Replacement Parts*

Ref Number	PN	Description (Quantity)	See Figure No.
48	68724	Cover gasket (1)	3
50	67612	CPU board (1)	5
51	15650	Cable tie mounts, 3/4 in. (6)	3
52	16861	High voltage warning label (1)	
53	16892	Ground/Earth label (1)	
54	68621	Fuse access coverplate gasket (1)	
55	68903	Back panel (1)	
—	66502	Switch panel membrane (1)	
<p>* Additional parts included in parts kit.</p> <p> <b>Caution</b> <i>To protect against the risk of fire, replace fuses only with same type and rating fuse.</i></p>			

*Table 2. Replacement Parts (Continued)*

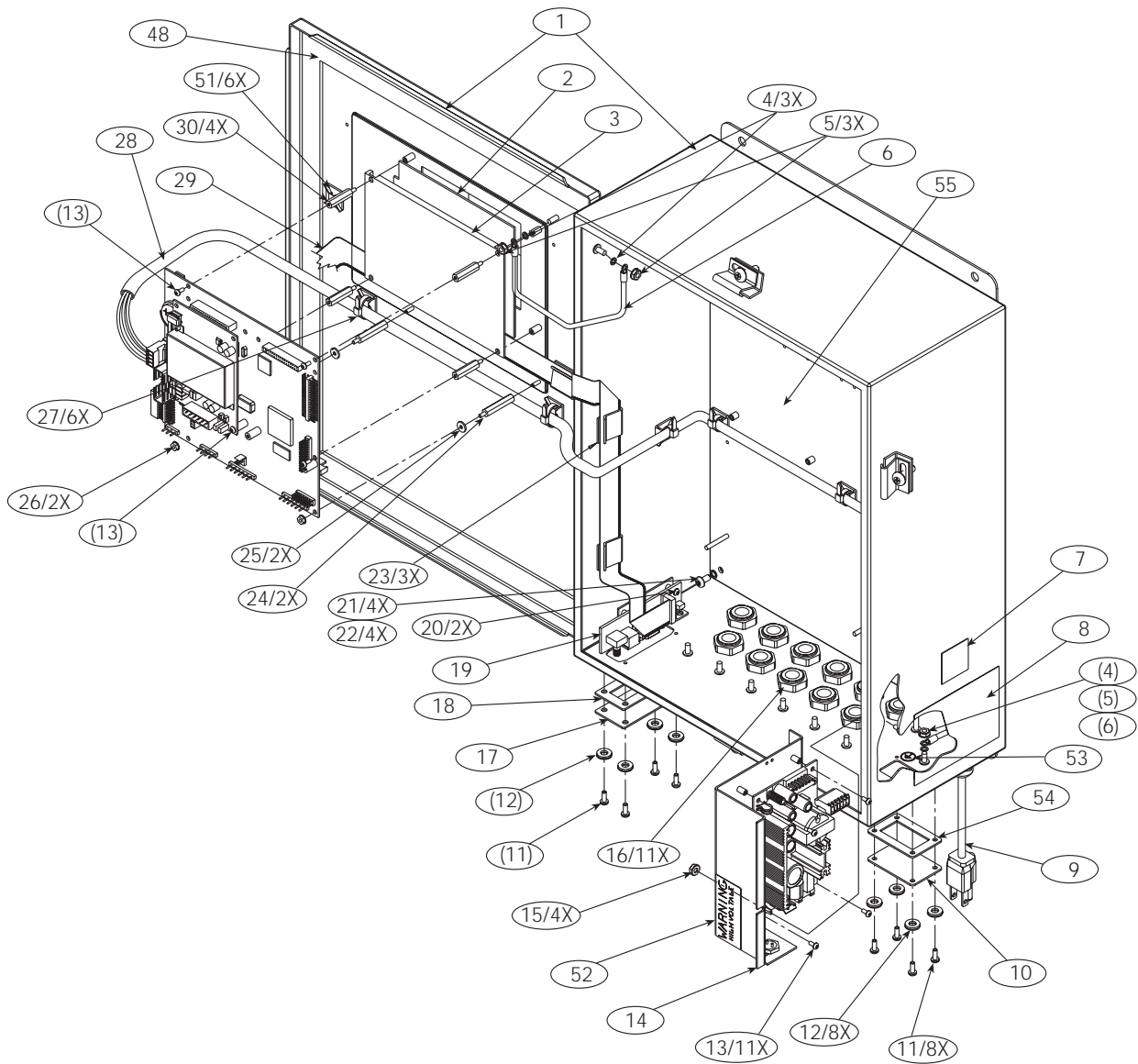


Figure 3. Wall Mount Enclosure

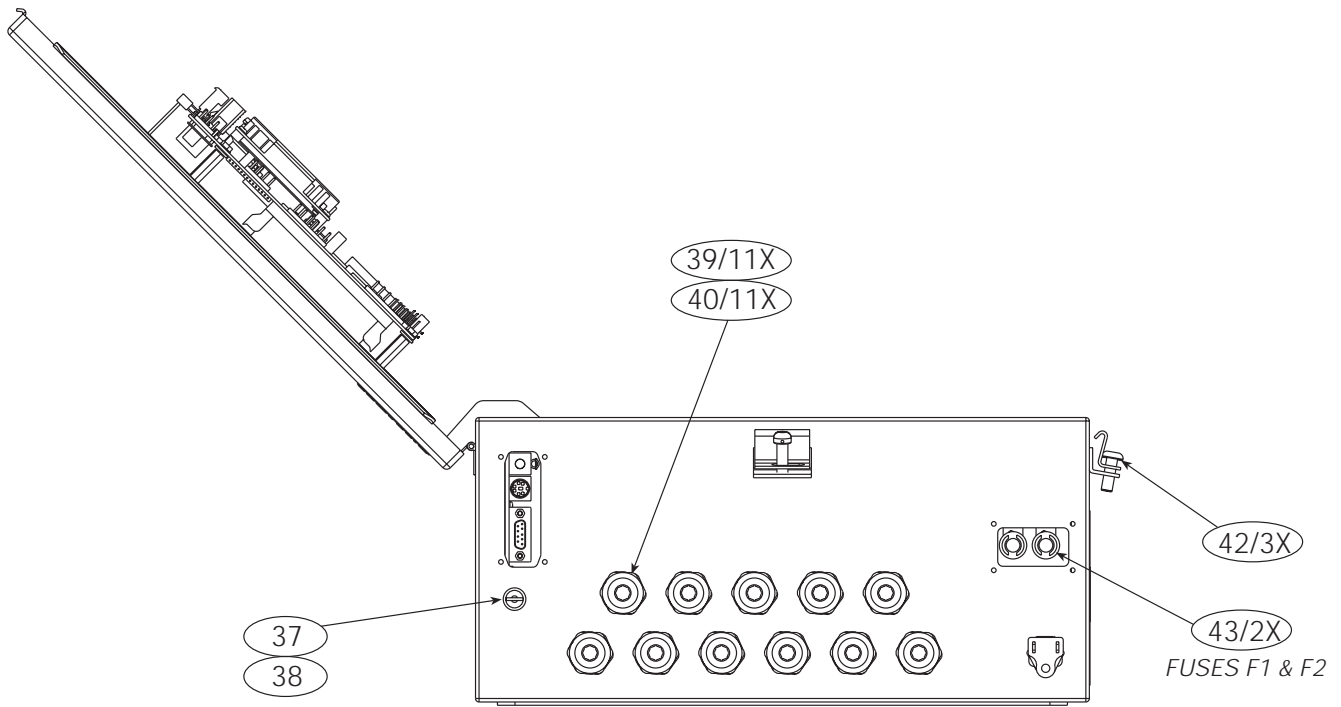


Figure 4. Wall Mount Enclosure, Bottom View

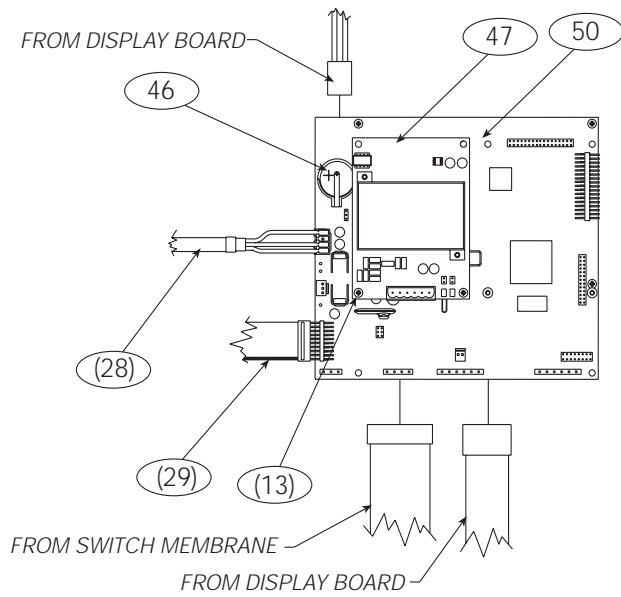


Figure 5. Wall Mount Enclosure, CPU Board Connections

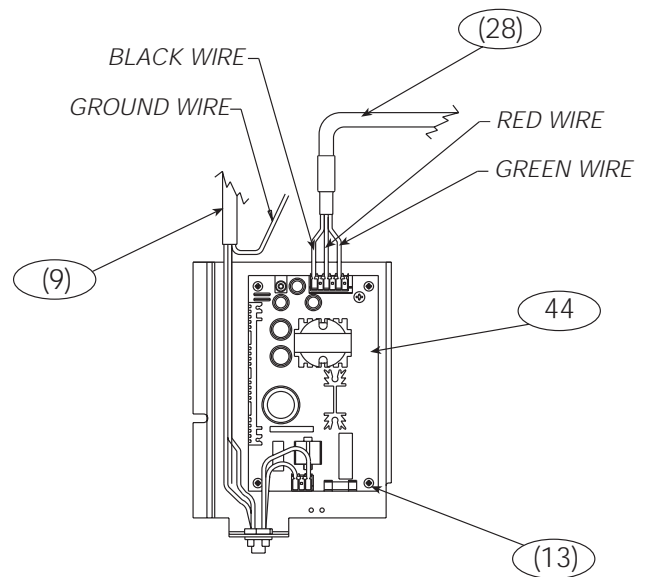


Figure 6. Wall Mount Enclosure, Power Supply Connections