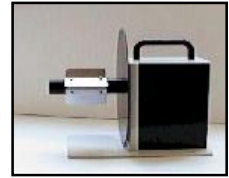


MC-10A & MC-11

Popular & Economical “MINI-CAT” Label Rewinders

The popular MINI-CAT Label Rewinders are the world's lowest-price Label Rewinders. They are capable of rewinding label rolls up to 4½ -inches wide, up to 8-inches in diameter at speeds up to 10-ips (inches per second). The MINI-CATs can also be used as Label Unwinders.



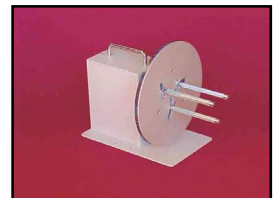
The MINI-CAT-10A (**MC-10A**) has a 3-inch diameter core holder. You can also use the included “coreless rewind” feature to rewind directly on-shaft.

MC-10A (above): Rewind directly “on-shaft” without a label core, or you can use the included 3-inch core holder!

The MINI-CAT-11 (**MC-11**) includes a precision-crafted Adjustable Core Holder that adjusts in seconds to accept any core diameter from 1-inch to 4-inches (25- to 102-mm). The **MC-11** will also do coreless rewinding.

MC-11 (below): Rewind on any core from 1-inch to 4-inches in diameter.

Both MINI-CATs use LABELMATE's proprietary Constant Adjustable Torque™ (“CAT”) technology to achieve impressive, reliable performance at an unprecedented low price. A special motor, designed specifically for the MINI-CATs, offers bi-directional operation and trouble-free performance. A switch conveniently controls the amount of rewind force. No awkward tensioning arms, troublesome belts, or clutches are used and no speed adjustments are required. Your MINI-CAT automatically adjusts to any printer speed up to 10-ips and even allows label back-feeding automatically if your printer requires it.



Both MINI-CATs have an inner label flange to keep the edge of the label web aligned as the labels are being rewound. Also available is an optional Adjustable Paper Guide (**APG-1**) that mounts directly to the **MC-10A** or **MC-11** base plate and guides the outer edge of the labels. New for the **MC-10A** is an optional plastic Outer Flange (**MC-10 Flange**). See photos below right.

Rugged steel construction allows your MINI-CAT to simply be set in place near your label printer. Special anti-slip feet prevent the unit from moving. Put a LABELMATE MINI-CAT to work for you today and enjoy a new dimension in label rewinding & unwinding convenience and reliability.

MC-10 & MC-11 SPECIFICATIONS:

Label Width: Up to 4.5-inches (114+ mm). **Maximum Label Roll Weight:** 8.5 lbs. (3.9 kg).

Label Roll Diameter: Up to 8-inches (203+ mm).

Core Diameter: **MC-10A:** 3-inch or coreless.

MC-11: Use any cardboard core from 1- to 4-inches (25 to 102mm) in diameter.

Speed: Up to 10-ips (25+ cm/sec). Switch adjustable rewind force. No speed adjustments are required.

Start/Stop: Convenient ON-OFF switch. **Direction:** Bi-directional.

Power Requirements: 120vac 60Hz. 20 va. UL / CSA Listed Power Supply.

Size: HWD 9 x 6 x 11 in. (229 x 152 x 279 mm). **Weight:** 13 lbs. (5.9 kg).

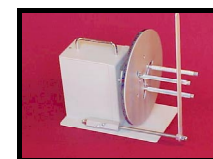
Optional: Adjustable Paper Guide (**APG-1**) guides the outer edge of the label web for MC-10A or MC-11. New for the MC-10A is an optional plastic Outer Flange (**MC-10 Flange**). See photos at right.

Warranty: 3-Year Parts and Labor Limited Warranty, the longest in the industry!

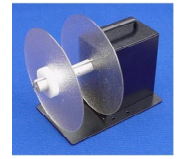
(One [1] year Limited Warranty on included Power Supply Module.)

Order a LABELMATE MINI-CAT Rewinder for new low-cost convenience today!

Thousands are already in daily use around the world. 220-240vac 50Hz units are available at the same price.



MC-11 with APG-1



**MINI-CAT-10A w/
Optional Flange**

Specifications are subject to change without notice. DataMC.doc Rev. 01/01

The World's Leading Manufacturer of Label Rewinders, Unwinders, Slitters and Core Chucks
LABELMATE LLC, 12A SUNSET WAY, HENDERSON, NV 89014-2002 USA

Toll-Free! (877) 833-7149 (702) 435-8535 FAX (702) 435-8536 www.labelmate.com E-mail: info@labelmate.com

LABELMATE EUROPE, 69 AVENUE ALPHONSE XIII, B-1180 BRUSSELS, BELGIUM +32 (2) 375-6960 FAX +32 (2) 375-3896