

Number: I-05-07

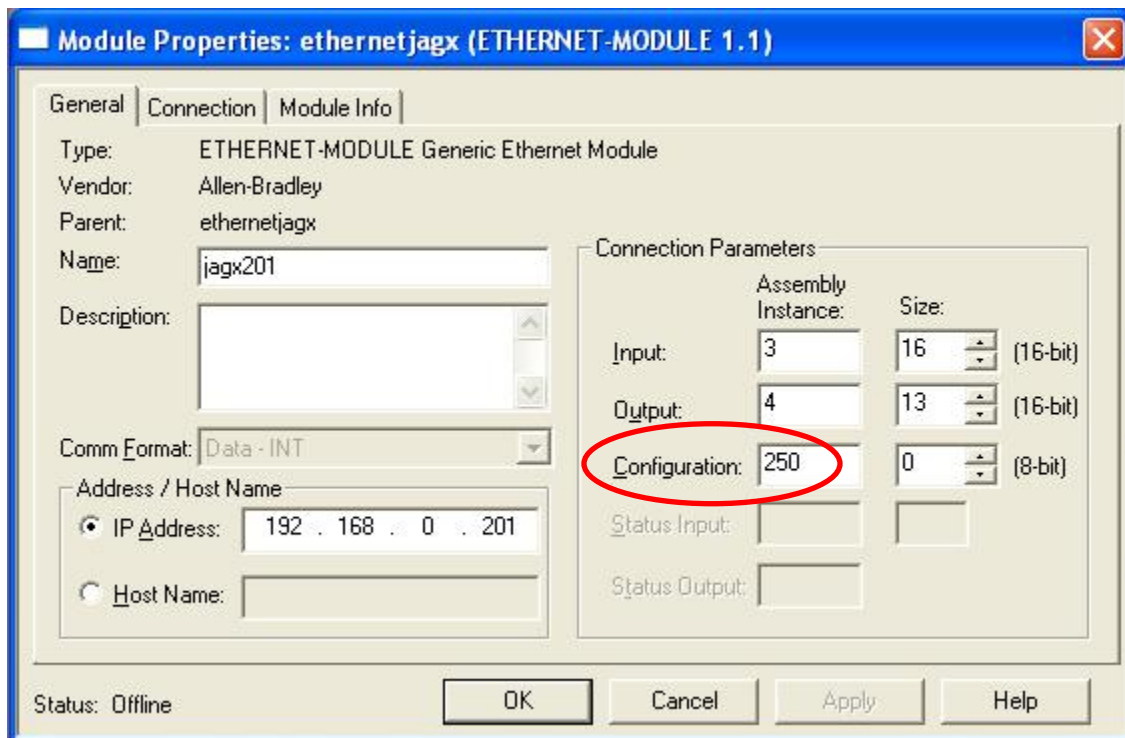
Date: February 8, 2007

To: MT Sales US, MT Service US, MT Sales Canada, MT Service Canada, Distributor Sales, Distributor Service

Model: JAGXTREME, JXHG

ControlNet & Ethernet/IP Configuration Change

Due to Rockwell Automation product changes, the JAGXTREME CIP manual A16760300A example is now out of date. The manual recommends using 255 for the Configuration Assembly Instance in ControlNet and Ethernet/IP module properties. While 255 works with older Rockwell Automation systems, it is now a reserved value and will no longer work. Values defined as METTLER TOLEDO scale terminal Input and Output Assembly Instances (1, 2, 3, 4, and 9 for the JAGXTREME) and 255 cannot be used as the Configuration Assembly Instance. Values used by other METTLER TOLEDO scale terminals vary, but 255 is still reserved and cannot be used. 250 is shown as the Configuration Assembly Instance in this example RSLogix5000 Module Properties dialog box.



The JAGXTREME CIP Manual is currently undergoing revision to reflect this change. Existing Logix5000 ControlNet and Ethernet/IP program examples and tutorials supplied by METTLER TOLEDO may contain out-of-date configuration references. These program examples and tutorials will not necessarily be revised.

Contact Rockwell Automation support for more information on Configuration Assembly Instances or other ControlNet or Ethernet/IP connection parameters.