

# WEIGH-TRONIX

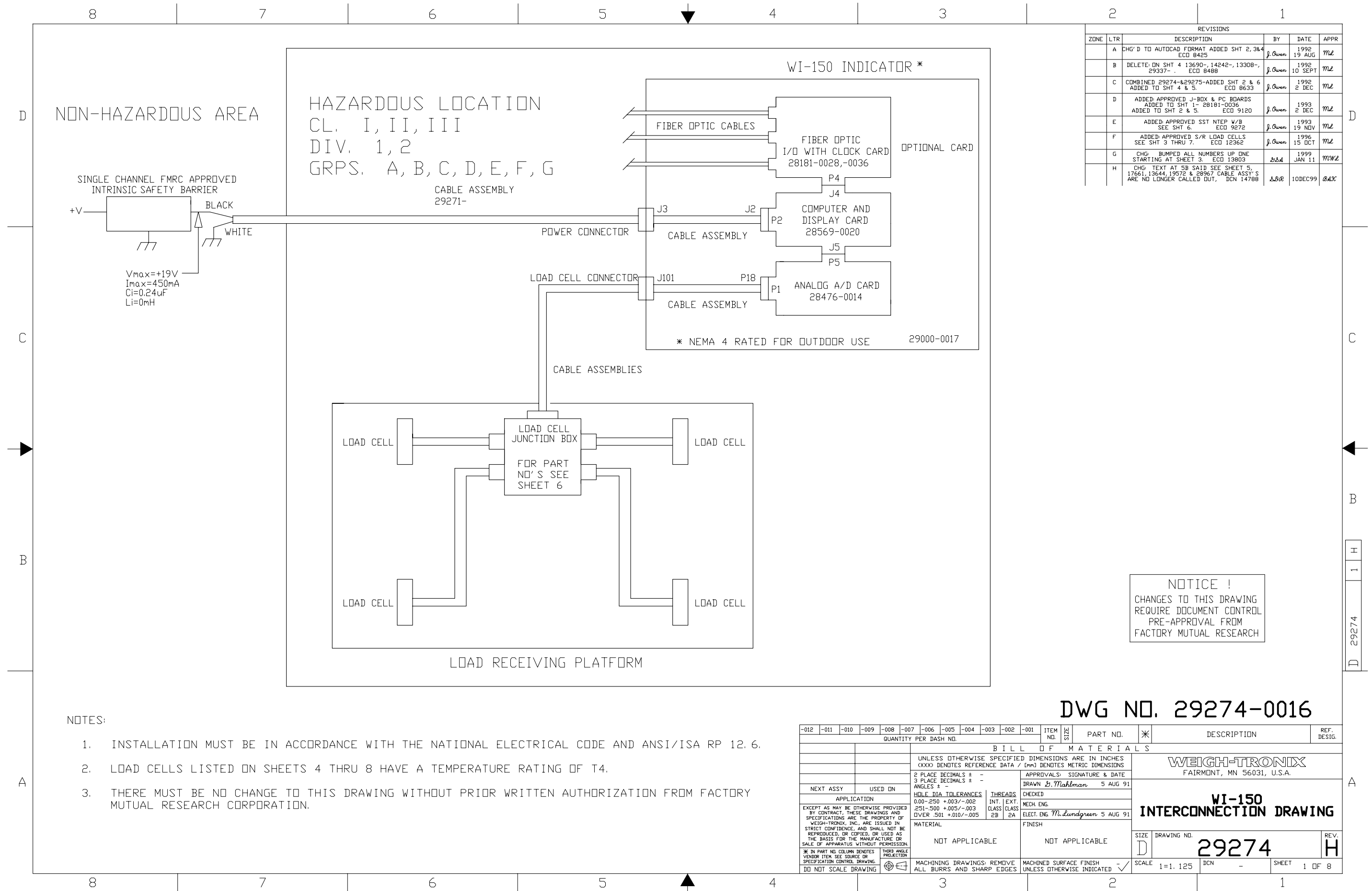


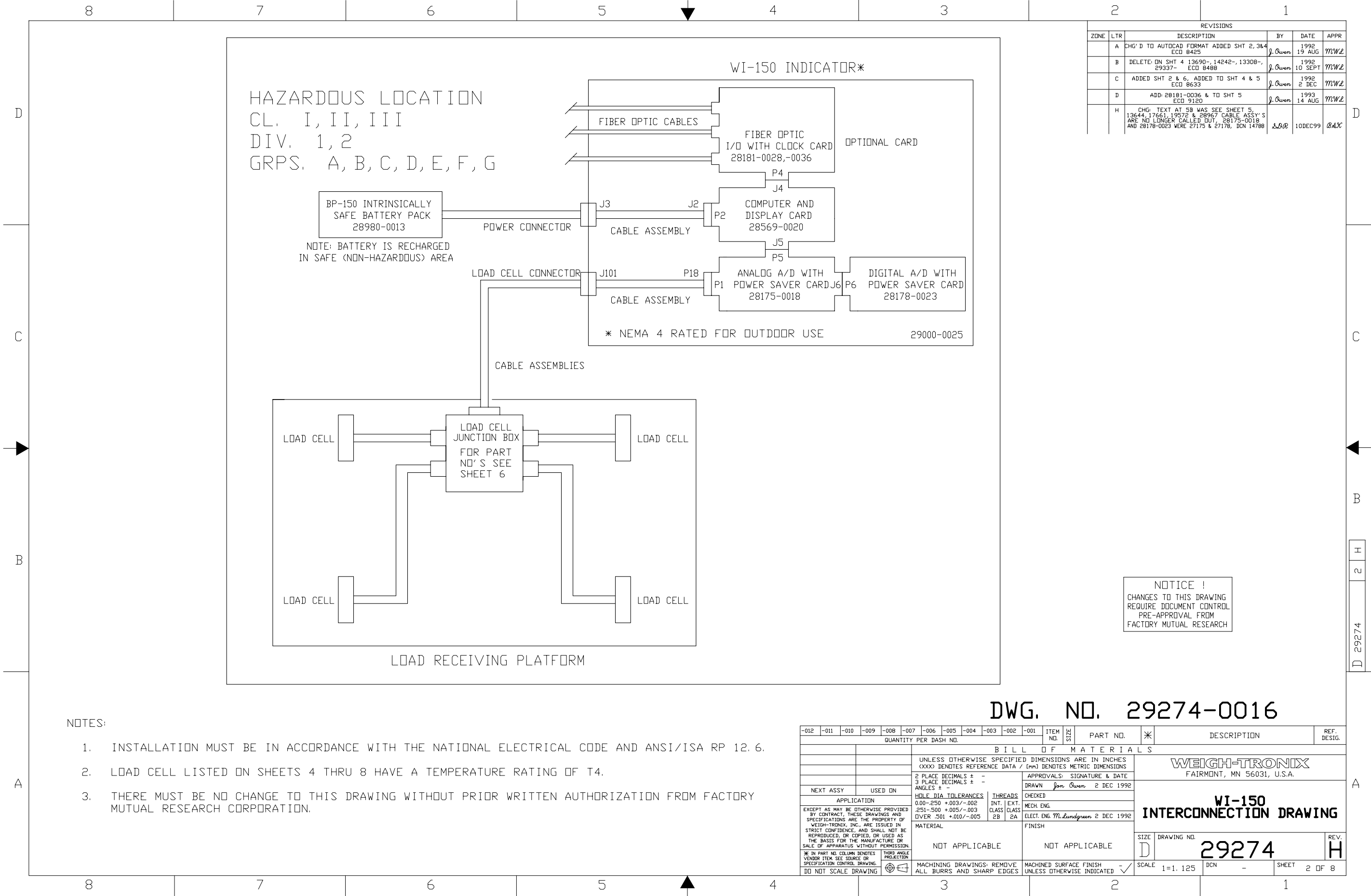
## WI-150 Control Document

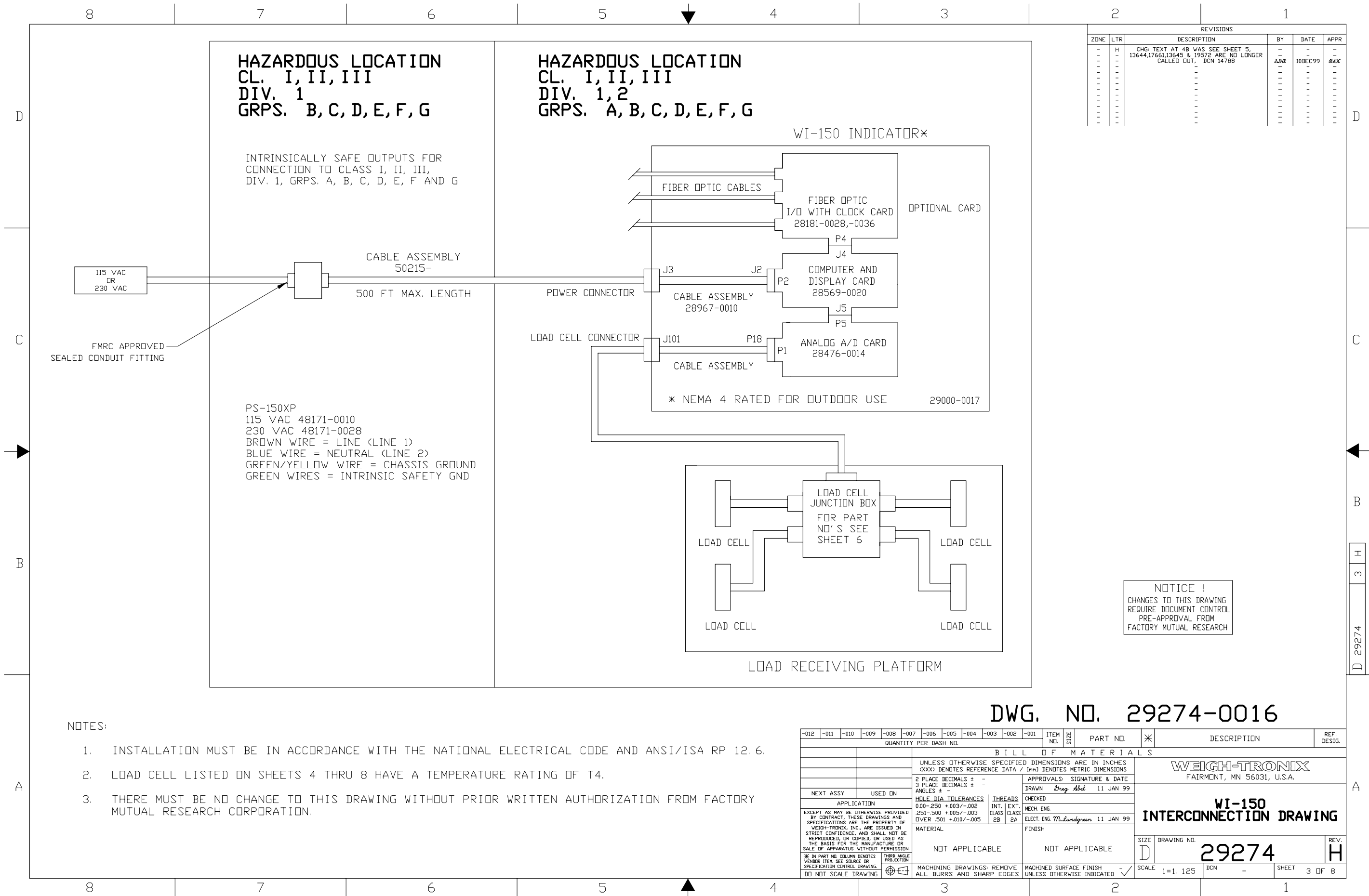
***All Weigh-Tronix products bearing the Factory Mutual seal are designed and manufactured according to the guidelines set forth by Factory Mutual Research. It is the responsibility of the owners to gain approval from their insurance companies for the suitability of the Weigh-Tronix equipment and installation for their particular environment and use of the product.***

***Weigh-Tronix warrants that the equipment delivered by it will be of the kind and quality described in the order or contract and will be free of defects in workmanship and material. Should any failure to conform to this warranty appear in two years, Weigh-Tronix shall, at its option, either repair or replace any defective part.***

***This warranty is in lieu of all warranties of merchantability, fitness for particular purpose, or any other warranties, express or implied. Weigh-Tronix shall not be liable for special, indirect, incidental, or consequential damages. The remedies set forth above are exclusive, and the liability of Weigh-Tronix shall not exceed the price of the equipment or part.***







REVISIONS					
ZONE	LTR	DESCRIPTION	BY	DATE	APPR
-	H	CHG. TEXT AT 4B WAS SEE SHEET 5, 13644,17661,13645 & 19572 ARE NO LONGER CALLED OUT, DCN 14788	<del>ΔΔΔ</del>	10DEC99	<del>ΔΔΔ</del>
-	-	-	-	-	-
-	-	-	-	-	-
-	-	-	-	-	-
-	-	-	-	-	-
-	-	-	-	-	-
-	-	-	-	-	-
-	-	-	-	-	-
-	-	-	-	-	-

NOTES:

1. INSTALLATION MUST BE IN ACCORDANCE WITH THE NATIONAL ELECTRICAL CODE AND ANSI/ISA RP 12.6.
2. LOAD CELL LISTED ON SHEETS 4 THRU 8 HAVE A TEMPERATURE RATING OF T4.
3. THERE MUST BE NO CHANGE TO THIS DRAWING WITHOUT PRIOR WRITTEN AUTHORIZATION FROM FACTORY MUTUAL RESEARCH CORPORATION.

DWG. NO. 29274-0016

-012	-011	-010	-009	-008	-007	-006	-005	-004	-003	-002	-001	ITEM NO.	WZS	PART NO.	*	DESCRIPTION	REF. DESIG.
QUANTITY PER DASH NO.																	
B I L L O F M A T E R I A L S																	
												UNLESS OTHERWISE SPECIFIED DIMENSIONS ARE IN INCHES (XXX) DENOTES REFERENCE DATA / [mm] DENOTES METRIC DIMENSIONS					
												2 PLACE DECIMALS ± - 3 PLACE DECIMALS ± - ANGLES ± -					
NEXT ASSY USED ON												APPROVALS: SIGNATURE & DATE DRAWN <i>Erag Abal</i> 11 JAN 99					
APPLICATION												CHECKED MECH. ENG. ELECT. ENG. <i>M. Lundgreen</i> 11 JAN 99					
EXCEPT AS MAY BE OTHERWISE PROVIDED BY CONTRACT, THESE DRAWINGS AND SPECIFICATIONS ARE THE PROPERTY OF WEIGH-TRONIX, INC., ARE ISSUED IN STRICT CONFIDENCE, AND SHALL NOT BE REPRODUCED, OR COPIED, OR USED AS THE BASIS FOR THE MANUFACTURE OR SALE OF APPARATUS WITHOUT PERMISSION. * IN PART NO. COLUMN DENOTES VENDOR ITEM SEE SOURCE OR SPECIFICATION CONTROL DRAWING. DO NOT SCALE DRAWING												HOLE DIA. TOLERANCES 0.00-250 +.003/-0.002 251-500 +.005/-0.003 OVER 501 +.010/-0.005					
												THREADS INT. EXT. GLASS GLASS 2B 2A					
												MATERIAL					
												NOT APPLICABLE					
												NOT APPLICABLE					
												MACHINING DRAWINGS: REMOVE ALL BURRS AND SHARP EDGES					
												MACHINED SURFACE FINISH UNLESS OTHERWISE INDICATED					
												FINISH					
												SIZE D					
												DRAWING NO. 29274					
												REV. H					
												SCALE 1=1.125					
												DCN -					
												SHEET 3 OF 8					

NOTICE !  
CHANGES TO THIS DRAWING  
REQUIRE DOCUMENT CONTROL  
PRE-APPROVAL FROM  
FACTORY MUTUAL RESEARCH

8

7

6

5

4

3

2

1

BENCH SCALE/ DECK SCALE WEIGH BARS

RECTANGULAR GUIDED BEAM TYPE

PART NUMBER

DESCRIPTION

23133-XXXX

50, 100 LB CAPACITY CONVEYOR W/B, 5 PIN CONNECTOR

21383-XXXX

\*30, 50, 100, 200 LB CAPACITY; 7 PIN CONNECTOR

21330-XXXX

30 THRU 200 LB CAPACITY; SPADE LUGS OR TINNED LEADS

21944-XXXX

500, 1000 LB CAPACITY; 7 PIN CONNECTOR

DECK SCALE WEIGH BARS

ROUND, SINGLE ENDED

PART NUMBER

DESCRIPTION

16441-XXXX

125 LB CAPACITY, .50 DIA, 5 PIN CONNECTOR

19176-XXXX

125 LB CAP, .50 DIA, SPADE LUG TERMINALS

23855-XXXX

125 LB CAP, .50 DIA, 5 PIN, WASH DOWN VERSION

14700-XXXX

250 LB CAP, .62 DIA, 5 PIN CONNECTOR

19177-XXXX

250 LB CAP, .62 DIA, SPADE LUG TERMINALS

23816-XXXX

250 LB CAP, .62 DIA, 5 PIN, WASH DOWN

49400-XXXX

250 LB CAP, .81 DIA, TINNED LEADS

14701-XXXX

500 LB CAP, .81 DIA, 5 PIN CONNECTOR

19178-XXXX

500 LB CAP, .81 DIA, SPADE LUG TERMINALS

23827-XXXX

500 LB CAP, .81 DIA, 5 PIN CONNECTOR, WASH DOWN

27836-XXXX

500 LB CAP, .81 DIA, LOW PROFILE DECK TYPE, 5 PIN CONNECTOR

45364-XXXX

500 LB CAP, .81 DIA, LOW PROFILE DECK TYPE, TINNED LEADS

48303-XXXX

500 LB CAP, .81 DIA, TINNED LEADS

14702-XXXX

1250 LB CAP, 1.25 DIA, 5 PIN CONNECTOR

19179-XXXX

1250 LB CAP, 1.25 DIA, SPADE LUG TERMINALS

23832-XXXX

1250 LB CAP, 1.25 DIA, 5 PIN CONNECTOR, WASH DOWN

27795-XXXX

1250 LB CAP, 1.25 DIA, LOW PROFILE DECK TYPE, 5 PIN CONNECTOR

28153-XXXX

1250 LB CAP, 1.25 DIA, LOW PROFILE DECK TYPE, 5 PIN CONN, WASH DOWN

29884-XXXX

1250 LB CAP, 1.25 DIA, LOW PROFILE DECK TYPE, 5 PIN, EPOXY PAINT

49860-XXXX

1250 LB CAP, 1.25 DIA, UNTINNED LEADS

14703-XXXX

2500 LB CAP, 1.62 DIA, 5 PIN CONNECTOR

19180-XXXX

2500 LB CAP, 1.62 DIA, SPADE LUG TERMINALS

23850-XXXX

2500 LB CAP, 1.62 DIA, 5 PIN CONNECTOR, WASH DOWN

27977-XXXX

2500 LB CAP, 1.62 DIA, LOW PROFILE DECK TYPE, 5 PIN CONNECTOR

28154-XXXX

2500 LB CAP, 1.62 DIA, LOW PROFILE DECK TYPE, 5 PIN CONNECTOR, WASH DOWN

49619-XXXX

2500 LB CAP, 1.62 DIA, UNTINNED LEADS

13498-XXXX

5000 LB CAP, 2.00 DIA, 5 PIN CONNECTOR

17257-XXXX

5000 LB CAP, 2.00 DIA, SPADE LUG TERMINALS

23852-XXXX

5000 LB CAP, 2.00 DIA, 5 PIN CONNECTOR, WASH DOWN

28074-XXXX

5000 LB CAP, 2.00 DIA, CONNECTOR OR LEADS

13851-XXXX

10,000 LB CAP, 2.50 DIA, 5 PIN CONNECTOR

17255-XXXX

10,000 LB CAP, 2.50 DIA, SPADE LUG TERMINALS

28293-XXXX

10,000 LB CAP, 2.50 DIA, 5 PIN CONNECTOR, WASH DOWN

16456-XXXX

20,000 LB CAP, 3.25 DIA, 5 PIN CONNECTOR

17256-XXXX

20,000 LB CAP, 3.25 DIA, SPADE LUG TERMINALS

41035-XXXX

WBL - 1.25 K, EPOXY PAINT W/MODIFIABLE CABLE

41036-XXXX

WBL - 2.50 K, EPOXY PAINT W/MODIFIABLE CABLE

41037-XXXX

WBL - 5.00 K, EPOXY PAINT W/MODIFIABLE CABLE

\* XXXX DENOTES THE LAST FOUR DIGITS OF THE PART NUMBER WHICH, FOR EACH DRAWING, DESIGNATE VARIATIONS IN CABLE LENGTHS, CAPACITIES, TYPE, OR NTEP VS NON-NTEP MODELS.

TRUCK SCALE WEIGH BARS

PART NUMBER

DESCRIPTION

18824-XXXX

PITLESS MOTOR TRUCK SCALE, 37.5K LB CAPACITY, 5 PIN CONNECTOR

17604-XXXX

PITLESS MOTOR TRUCK SCALE, 37.5K LB CAPACITY, SPADE LUG TERMINALS

27173-XXXX

PITLESS MOTOR TRUCK SCALE, 50K LB CAPACITY, 5 PIN CONNECTOR

20799-XXXX

PITLESS MOTOR TRUCK SCALE, 75K LB CAPACITY, 5 PIN CONNECTOR

24203-XXXX

PITLESS MOTOR TRUCK SCALE, 75K LB CAPACITY, SPADE LUG TERMINALS

14031-XXXX

PIT TYPE MOTOR TRUCK SCALE; 33K, 37.5K, AND 40K CAPACITY; SPADE LUG TERMINALS

20455-XXXX

PIT TYPE MOTOR TRUCK SCALE; 50K AND 75K LB CAP; SPADE LUG TERMINALS

50104-XXXX

WBT - 50.0 K BRIDGEMONT

50935-XXXX

WBT - 60.0 K BRIDGEMONT

CONVERSION KIT WEIGH BARS

LEVER TO ELECTRONIC TYPE TRUCK SCALE

PART NUMBER

DESCRIPTION

18583-XXXX

CONVERSION KIT, "S" TYPE; 250, 500, AND 1000 LB CAPACITIES

22256-XXXX

CONVERSION KIT, "S" TYPE; 2500 LB CAPACITY

13434-XXXX

CONVERSION KIT, SINGLE ENDED; 250, 375, 500, 667, 1000 LB CAPACITY

13863-XXXX

CONVERSION KIT, SINGLE ENDED; 500, 1587, 2000, 2500 LB CAPACITY

MONORAIL WEIGH BARS

PART NUMBER

DESCRIPTION

17142-XXXX

MONORAIL; 1000, 2000, 5000 LB CAPACITY

REVISIONS

ZONE	LTR	DESCRIPTION	BY	DATE	APPR
	A	CHG'D TO AUTOCAD FORMAT ADDED SHT 2, 3&4 ECD 8425	J. Owen	1992 19 AUG	MWZ
	E	ADD: 29884- ECD 9272	J. Owen	1993 22 NOV	MWZ
	F	ADD: 49400, 48303, 49860, 49619, 28074, 28074. SEE SHEET 5. ECD 12362	J. Owen	1996 15 OCT	MWZ
	H	ADD: 23133, 41035, 41036, 41037, 50104 & 50935, DCN 14788	LSB	10DEC99	BAK

NOTICE !

CHANGES TO THIS DRAWING REQUIRE DOCUMENT CONTROL PRE-APPROVAL FROM FACTORY MUTUAL RESEARCH

-012	-011	-010	-009	-008	-007	-006	-005	-004	-003	-002	-001	ITEM NO.	QTY	PART NO.	*	DESCRIPTION	REF. DESIG.
QUANTITY PER DASH NO.																	
B I L L O F M A T E R I A L S																	
UNLESS OTHERWISE SPECIFIED DIMENSIONS ARE IN INCHES (XXX) DENOTES REFERENCE DATA / (mm) DENOTES METRIC DIMENSIONS																	
2 PLACE DECIMALS ± - 3 PLACE DECIMALS ± - ANGLES ± -												APPROVALS: SIGNATURE & DATE					
NEXT ASSY USED ON												DRAWN Jon Owen 19 AUG 92					
APPLICATION												CHECKED					
EXCEPT AS MAY BE OTHERWISE PROVIDED BY CONTRACT, THESE DRAWINGS AND SPECIFICATIONS ARE THE PROPERTY OF WEIGH-TRONIX, INC., ARE ISSUED IN STRICT CONFIDENCE, AND SHALL NOT BE REPRODUCED, OR COPIED, OR USED AS THE BASIS FOR THE MANUFACTURE OR SALE OF APPARATUS WITHOUT PERMISSION.												MECH. ENG.					
HOLE DIA. TOLERANCES: 0.00-250 +.003/-002 251-500 +.005/-003 OVER .501 +.010/-005												ELECT. ENG. M. Lundgreen, 19 AUG 92					
MATERIAL												FINISH					
NOT APPLICABLE												NOT APPLICABLE					
MACHINING DRAWINGS: REMOVE ALL BURRS AND SHARP EDGES												MACHINED SURFACE FINISH UNLESS OTHERWISE INDICATED					

WEIGH-TRONIX

FAIRMONT, MN 56031, U.S.A.

WI-150

INTERCONNECTION DRAWING

SIZE

D

DRAWING NO.

29274

REV.

H

SCALE

1=1

DCN

-

SHEET

4 OF 8

8

7

6

5

4

3

2

1

8

7

6

5

4

3

2

1

8

7

6

5

4

3

2

1

8

7

6

5

4

3

2

1

87654321

FOREIGN DECK WEIGH BARS

PART NUMBER	DESCRIPTION
29291-XXXX	500 LB CAPACITY, DECK TYPE
29292-XXXX	500 LB CAPACITY, LOW PROFILE DECK TYPE
29293-XXXX	1250 LB CAPACITY, DECK TYPE
29294-XXXX	1250 LB CAPACITY, LOW PROFILE DECK TYPE
29295-XXXX	2500 LB CAPACITY, DECK TYPE
29296-XXXX	2500 LB CAPACITY, LOW PROFILE DECK TYPE
29864-XXXX	5000 LB CAPACITY, DECK TYPE
29865-XXXX	10,000 LB CAPACITY, DECK TYPE
47812-XXXX	500 LB CAPACITY, 2 mV/V
47811-XXXX	500 LB CAPACITY WBP, 5 PIN CONNECTOR, 2 mV/V
51732-XXXX	1250 LB CAPACITY WBL, 5 PIN CONNECTOR
52250-XXXX	5000 LB CAPACITY WBL, 5 TINNED LEADS

87654321

BOLTDOWN BATCHING WEIGH BARS

PART NUMBER	DESCRIPTION
50661-XXXX	WBP - .125 K BOLTDOWN TINNED LEADS
50662-XXXX	WBP - .250 K BOLTDOWN TINNED LEADS
50663-XXXX	WBP - .500 K BOLTDOWN TINNED LEADS
50664-XXXX	WBP - 1.25 K BOLTDOWN TINNED LEADS
50665-XXXX	WBP - 2.50 K BOLTDOWN TINNED LEADS
50666-XXXX	WBP - 5.00 K BOLTDOWN TINNED LEADS
50667-XXXX	WBP - 10.0 K BOLTDOWN TINNED LEADS

87654321

BATCHING WEIGH BARS  
DOUBLE ENDED

PART NUMBER	DESCRIPTION
18265-XXXX	250, 500 LB CAPACITY, 5 PIN CONNECTOR
18304-XXXX	250, 500 LB CAPACITY, SPADE LUG TERMINALS
18303-XXXX	1000, 1250 LB CAPACITY, 5 PIN CONNECTOR
18397-XXXX	1000, 1250 LB CAPACITY, SPADE LUG TERMINALS
21087-XXXX	2000 LB CAPACITY, STATIONARY FEED MIXER
18324-XXXX	2000, 2500 LB CAPACITY, 5 PIN CONNECTOR
18543-XXXX	2000, 2500 LB CAPACITY, SPADE LUG TERMINALS
18352-XXXX	5000 LB CAPACITY, 5 PIN CONNECTOR
18546-XXXX	5000 LB CAPACITY, SPADE LUG TERMINALS
13939-XXXX	5K, 10K, 12.5K, 20K, 25K CAPACITY, 5 PIN CONNECTOR
17201-XXXX	5K, 10K, 12.5K, 20K, 25K CAPACITY, SPADE LUG TERMINALS
18602-XXXX	50K, 75K, 100K, 150K, 200K CAPACITY, SPADE LUG TERMINALS

87654321

STAINLESS STEEL WEIGH BARS

PART NUMBER	DESCRIPTION
46457-XXXX	50 LB CAPACITY, SINGLE POINT
47716-XXXX	250 LB CAPACITY, 5 PIN CONNECTOR
47717-XXXX	250 LB CAPACITY, SPADE LUG TERMINALS
27730-XXXX	500 LB CAPACITY, DECK TYPE, 5 PIN CONNECTOR
27960-XXXX	500 LB CAPACITY, DECK TYPE, SPADE LUG TERMINALS
45374-XXXX	500 LB CAPACITY, LOW PROFILE DECK TYPE, TINNED LEADS
45838-XXXX	500 LB CAPACITY, LOW PROFILE DECK TYPE, 5 PIN CONNECTOR
47866-XXXX	500 LB CAPACITY, 5 PIN CONNECTOR
47869-XXXX	500 LB CAPACITY, 5 PIN CONNECTOR
27732-XXXX	1250 LB CAPACITY, DECK TYPE, 5 PIN CONNECTOR
27962-XXXX	1250 LB CAPACITY, DECK TYPE, SPADE LUG TERMINALS
45943-XXXX	1250 LB CAPACITY, LOW PROFILE DECK TYPE, 5 PIN CONNECTOR
47825-XXXX	1250 LB CAPACITY, 5 PIN CONNECTOR
47870-XXXX	1250 LB CAPACITY, 5 PIN CONNECTOR
46391-XXXX	2500 LB CAPACITY, DSL TYPE, 5 PIN CONNECTOR
27733-XXXX	2500 LB CAPACITY, DECK TYPE, 5 PIN CONNECTOR
27963-XXXX	2500 LB CAPACITY, DECK TYPE, SPADE LUG TERMINALS
47867-XXXX	2500 LB CAPACITY, 5 PIN CONNECTOR
47871-XXXX	2500 LB CAPACITY, 5 PIN CONNECTOR
27731-XXXX	5000 LB CAPACITY, DECK TYPE, 5 PIN CONNECTOR
27961-XXXX	5000 LB CAPACITY, DECK TYPE, SPADE LUG TERMINALS
47868-XXXX	5000 LB CAPACITY, 5 PIN CONNECTOR
47872-XXXX	5000 LB CAPACITY, 5 PIN CONNECTOR
46134-XXXX	10K LB CAPACITY, DS TYPE, 5 PIN CONNECTOR
46135-XXXX	10K LB CAPACITY, DS TYPE, SPADE LUG TERMINALS
48103-XXXX	10K LB CAPACITY, SPADE LUG TERMINALS
48262-XXXX	10K LB CAPACITY, 5 PIN CONNECTOR
48120-XXXX	20K LB CAPACITY, SPADE LUG TERMINALS
48126-XXXX	20K LB CAPACITY, 5 PIN CONNECTOR
52241-XXXX	WBLW MODEL, TINNED LEADS
51203-XXXX	WBLS - 250 LB, 5 PIN CONNECTOR

87654321

STAINLESS STEEL BENCH/ DECK SCALE WEIGH BARS, MODEL FLS  
RECTANGULAR GUIDED BEAM

PART NUMBER	DESCRIPTION
49098-XXXX	45-250 LB CAPACITY, SPADE LUGS OR TINNED LEADS
49099-XXXX	45-250 LB CAPACITY, 7 PIN CONNECTOR
49100-XXXX	625-1250 LB CAPACITY, 7 PIN CONNECTOR

87654321

REVISIONS

ZONE	LTR	DESCRIPTION	BY	DATE	APPR
	A	CHG'D TO AUTOCAD FORMAT ADDED SHT 2, 3&4 ECD #8425	J. Owen	1992 19 AUG	MW2
	C	ADDED 45838-XXXX & 45943-XXXX ECD 8633	J. Owen	1992 2 DEC	MW2
	E	ADDED 46457-& 46391-& 46134-& 46135- ECD 9272	J. Owen	1993 23 NOV	MW2
	F	ADDED 47716-, 47717-, 47866-, 47869-, 47825-, 47870-, 47867-, 47871-, 47868-, 47872-, 48103-, 48262-, 48120-, 48126-, 49098-, 49099-, 49100- DEL' 17242- ECD 12362	J. Owen	1996 15 OCT	MW2
	H	DEL' ALL OF FARM EQUIP WB- FULL BRIDGE, 17242, 17029, 20094 & 21623 DOUBLE ENDED BATCHING W/B'S, ADD: BOLTDOWN BATCHING WEIGH BARS, 52241 & 51203 SST W/B, 47811 51732, 52250 & 47812 FOREIGN DECK W/B'S, CHG: 18546 DOUBLE ENDED BATCHING W/B WAS 5000 LB CAPACITY, 5 PIN CONN, DCN 14788	JSR	10DEC99	BAK

87654321

NOTICE !  
CHANGES TO THIS DRAWING  
REQUIRE DOCUMENT CONTROL  
PRE-APPROVAL FROM  
FACTORY MUTUAL RESEARCH

87654321

BILL OF MATERIALS

QUANTITY PER DASH NO.	ITEM NO.	HTS	PART NO.	DESCRIPTION	REF. DESIG.
UNLESS OTHERWISE SPECIFIED DIMENSIONS ARE IN INCHES (XXX) DENOTES REFERENCE DATA / (mm) DENOTES METRIC DIMENSIONS					
2 PLACE DECIMALS ± - 3 PLACE DECIMALS ± - ANGLES ± -			APPROVALS: SIGNATURE & DATE DRAWN J. Owen 19 AUG 92		
HOLE DIA. TOLERANCES 0.00-250 +.003/-0.02 251-500 +.005/-0.03 OVER .501 +.010/-0.05			INT. EXT. CLASS CLASS 2B 2A		
MATERIAL NOT APPLICABLE			FINISH NOT APPLICABLE		
MACHINING DRAWINGS: REMOVE ALL BURRS AND SHARP EDGES			MACHINED SURFACE FINISH UNLESS OTHERWISE INDICATED		

87654321

WEIGH-TRONIX  
FAIRMONT, MN 56031, U.S.A.

WI-150  
INTERCONNECTION DRAWING

SIZE D  
DRAWING NO. 29274  
SCALE 1=1  
DCN -  
SHEET 5 OF 8

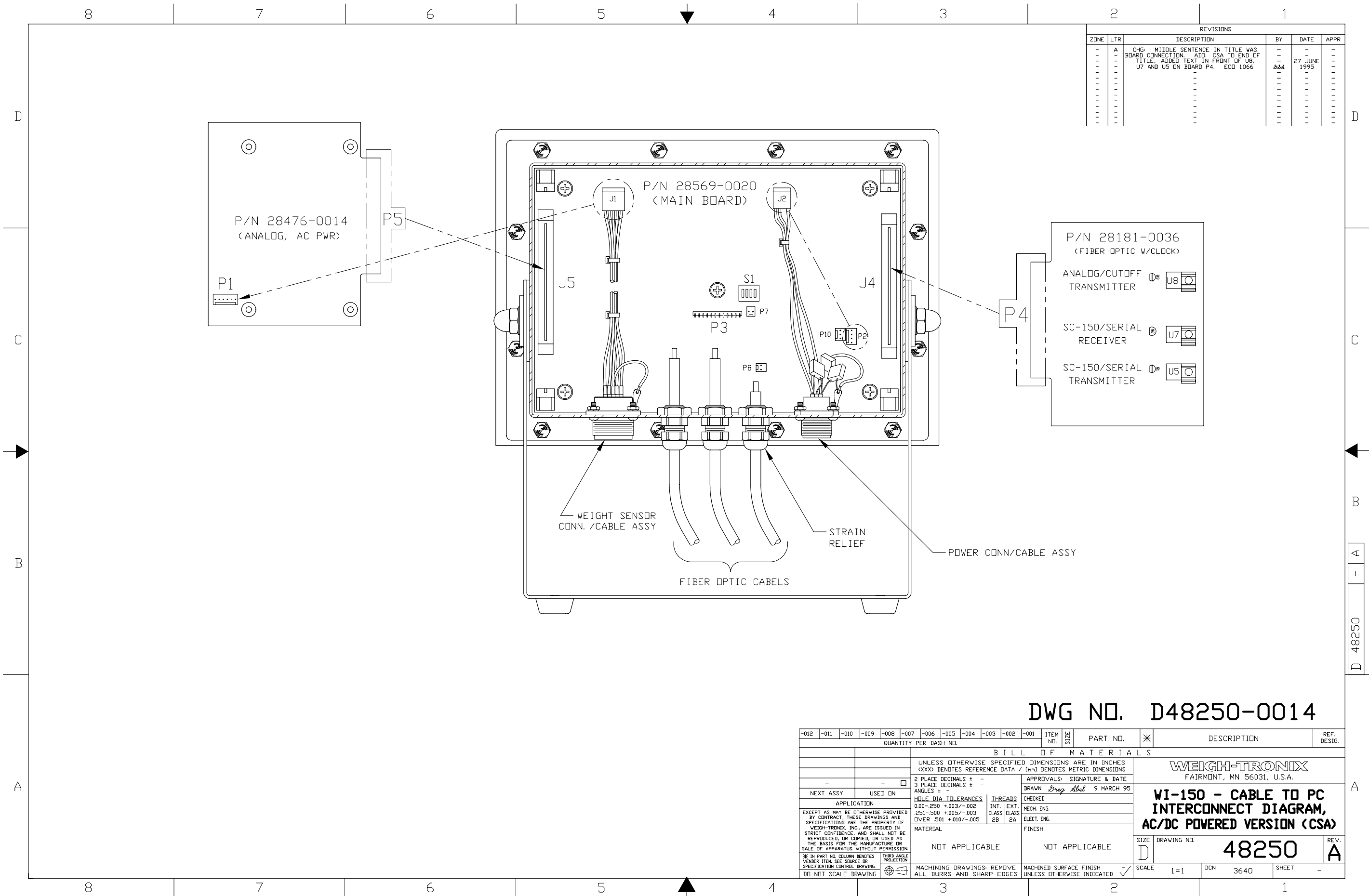
REV. H





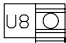
[illegible]

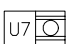
[illegible]

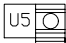


REVISIONS					
ZONE	LTR	DESCRIPTION	BY	DATE	APPR
-	A	CHG: MIDDLE SENTENCE IN TITLE WAS	-	-	-
-	-	BOARD CONNECTION. ADD: CSA TO END OF	-	-	-
-	-	TITLE. ADDED TEXT IN FRONT OF U8,	ddd	27 JUNE	-
-	-	U7 AND U5 ON BOARD P4. ECO 1066	-	1995	-
-	-	-	-	-	-
-	-	-	-	-	-
-	-	-	-	-	-
-	-	-	-	-	-
-	-	-	-	-	-
-	-	-	-	-	-
-	-	-	-	-	-
-	-	-	-	-	-
-	-	-	-	-	-
-	-	-	-	-	-
-	-	-	-	-	-

P/N 28181-0036  
(FIBER OPTIC W/CLOCK)

ANALOG/CUTOFF TRANSMITTER 

SC-150/SERIAL RECEIVER 

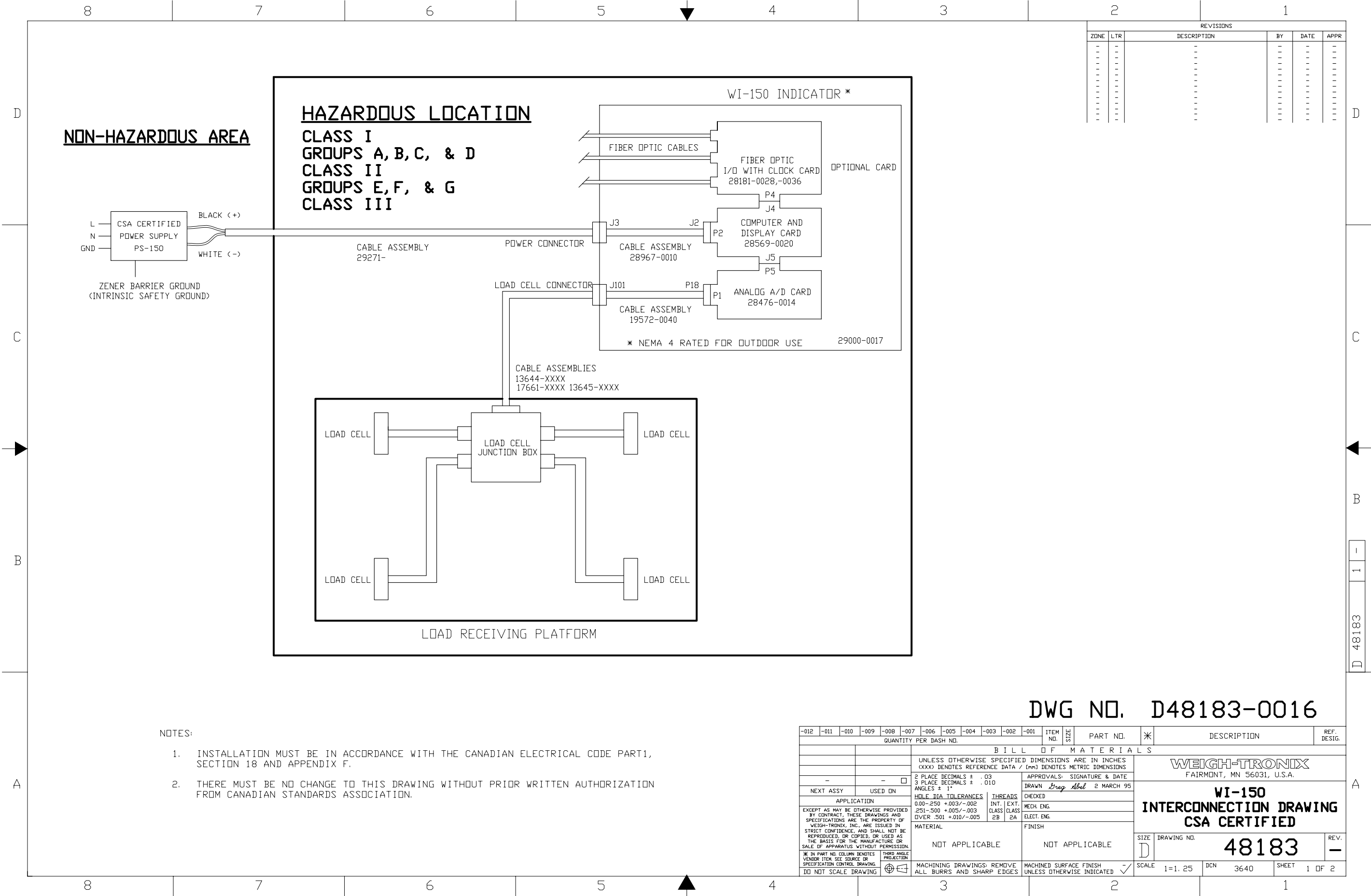
SC-150/SERIAL TRANSMITTER 

DWG NO. D48250-0014

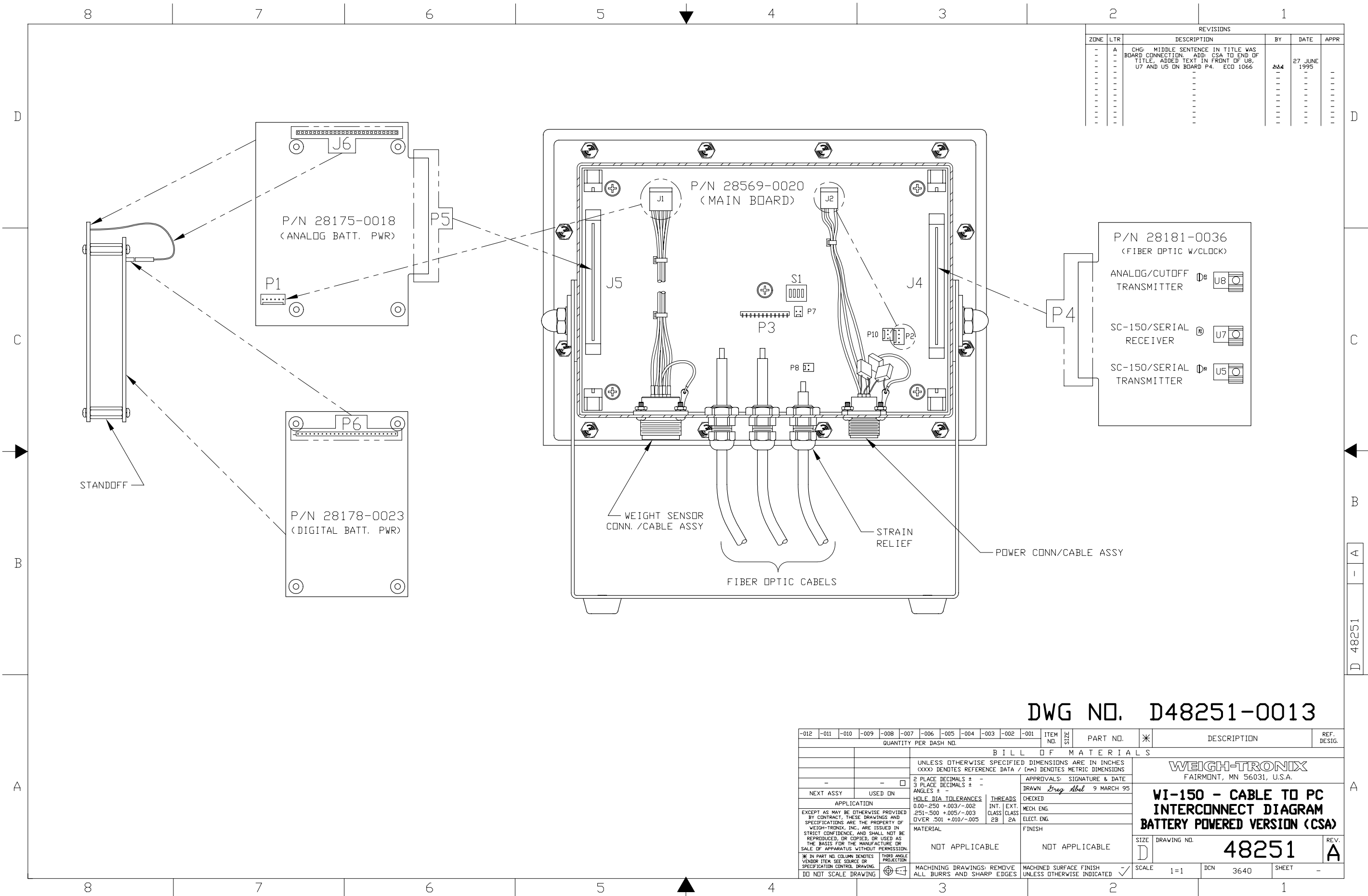
-012	-011	-010	-009	-008	-007	-006	-005	-004	-003	-002	-001	ITEM NO.	SIZE	PART NO.	✱	DESCRIPTION	REF. DESIG.		
QUANTITY PER DASH NO.												B I L L O F M A T E R I A L S							
												UNLESS OTHERWISE SPECIFIED DIMENSIONS ARE IN INCHES (XXX) DENOTES REFERENCE DATA / (mm) DENOTES METRIC DIMENSIONS							
												2 PLACE DECIMALS ± - 3 PLACE DECIMALS ± - ANGLES ± -							
NEXT ASSY      USED ON												APPROVALS: SIGNATURE & DATE DRAWN <i>Greg Abel</i> 9 MARCH 95							
APPLICATION												HOLE DIA. TOLERANCES 0.00-.250 +.003/-0.002 .251-.500 +.005/-0.003 OVER .501 +.010/-0.005							
EXCEPT AS MAY BE OTHERWISE PROVIDED BY CONTRACT, THE DRAWINGS AND SPECIFICATIONS ARE THE PROPERTY OF WEIGH-TRONIX, INC., ARE ISSUED IN STRICT CONFIDENCE, AND SHALL NOT BE REPRODUCED, OR COPIED, OR USED AS THE BASIS FOR THE MANUFACTURE OR SALE OF APPARATUS WITHOUT PERMISSION.  * IN PART NO. COLUMN DENOTES VENDOR ITEM. SEE SOURCE OR SPECIFICATION CONTROL DRAWING.  DO NOT SCALE DRAWING												THREADS INT.   EXT. CLASS CLASS 2B   2A							
												MATERIAL							
												NOT APPLICABLE							
												FINISH							
												NOT APPLICABLE							
												MACHINING DRAWINGS: REMOVE ALL BURRS AND SHARP EDGES							
												MACHINED SURFACE FINISH UNLESS OTHERWISE INDICATED    ✓							
												SIZE	DRAWING NO.		48250		REV.	A	
												D							
												SCALE	1=1		DCN	3640		SHEET	-

**WEIGH-TRONIX**  
FAIRMONT, MN 56031, U.S.A.

**WI-150 - CABLE TO PC  
INTERCONNECT DIAGRAM,  
AC/DC POWERED VERSION (CSA)**







REVISIONS					
ZONE	LTR	DESCRIPTION	BY	DATE	APPR
-	A	CHG. MIDDLE SENTENCE IN TITLE WAS			
-	-	BOARD CONNECTION. ADD: CSA TO END OF		27 JUNE	
-	-	TITLE. ADDED TEXT IN FRONT OF U8,	b&b	1995	
-	-	U7 AND U5 ON BOARD P4. ECD 1066			
-	-	...			
-	-	...			
-	-	...			
-	-	...			
-	-	...			
-	-	...			
-	-	...			

P/N 28181-0036  
(FIBER OPTIC W/CLOCK)

ANALOG/CUTOFF TRANSMITTER

SC-150/SERIAL RECEIVER

SC-150/SERIAL TRANSMITTER

DWG NO. D48251-0013

-012	-011	-010	-009	-008	-007	-006	-005	-004	-003	-002	-001	ITEM NO.	SIZE	PART NO.	✳	DESCRIPTION	REF. DESIG.
QUANTITY PER DASH NO.																	
B I L L O F M A T E R I A L S																	
UNLESS OTHERWISE SPECIFIED DIMENSIONS ARE IN INCHES (XXX) DENOTES REFERENCE DATA / [mm] DENOTES METRIC DIMENSIONS												WEIGH-TRONIX FAIRMONT, MN 56031, U.S.A.					
2 PLACE DECIMALS ± - 3 PLACE DECIMALS ± - ANGLES ± -												APPROVALS: SIGNATURE & DATE DRAWN <i>Ereg Abel</i> 9 MARCH 95					
HOLE DIA TOLERANCES 0.00-250 +.003/-0.002 251-500 +.005/-0.003 OVER .501 +.010/-0.005												CHECKED MECH. ENG. ELECT. ENG.					
MATERIAL NOT APPLICABLE												FINISH NOT APPLICABLE					
3% IN PART NO. COLUMN DENOTES VENDOR ITEM, SEE SOURCE OR SPECIFICATION CONTROL DRAWING. DO NOT SCALE DRAWING												MACHINING DRAWINGS: REMOVE ALL BURRS AND SHARP EDGES					
THIRD ANGLE PROJECTION												MACHINED SURFACE FINISH UNLESS OTHERWISE INDICATED					
												SIZE DRAWING NO. 48251					
												SCALE 1=1 DCN 3640 SHEET -					
												REV. A					

**Weigh-Tronix**

1000 Armstrong Dr.  
Fairmont, MN 56031 USA  
Telephone: 507-238-4461  
Facsimile: 507-238-4195  
e-mail: [industrial@weigh-tronix.com](mailto:industrial@weigh-tronix.com)  
[www.wtxweb.com](http://www.wtxweb.com)

**Weigh-Tronix Canada, ULC**

217 Brunswick Blvd.  
Pointe Claire, QC H9R 4R7 Canada  
Telephone: 514-695-0380  
Facsimile: 514-695-6820

**WEIGH-TRONIX**

Weighing Products & Systems