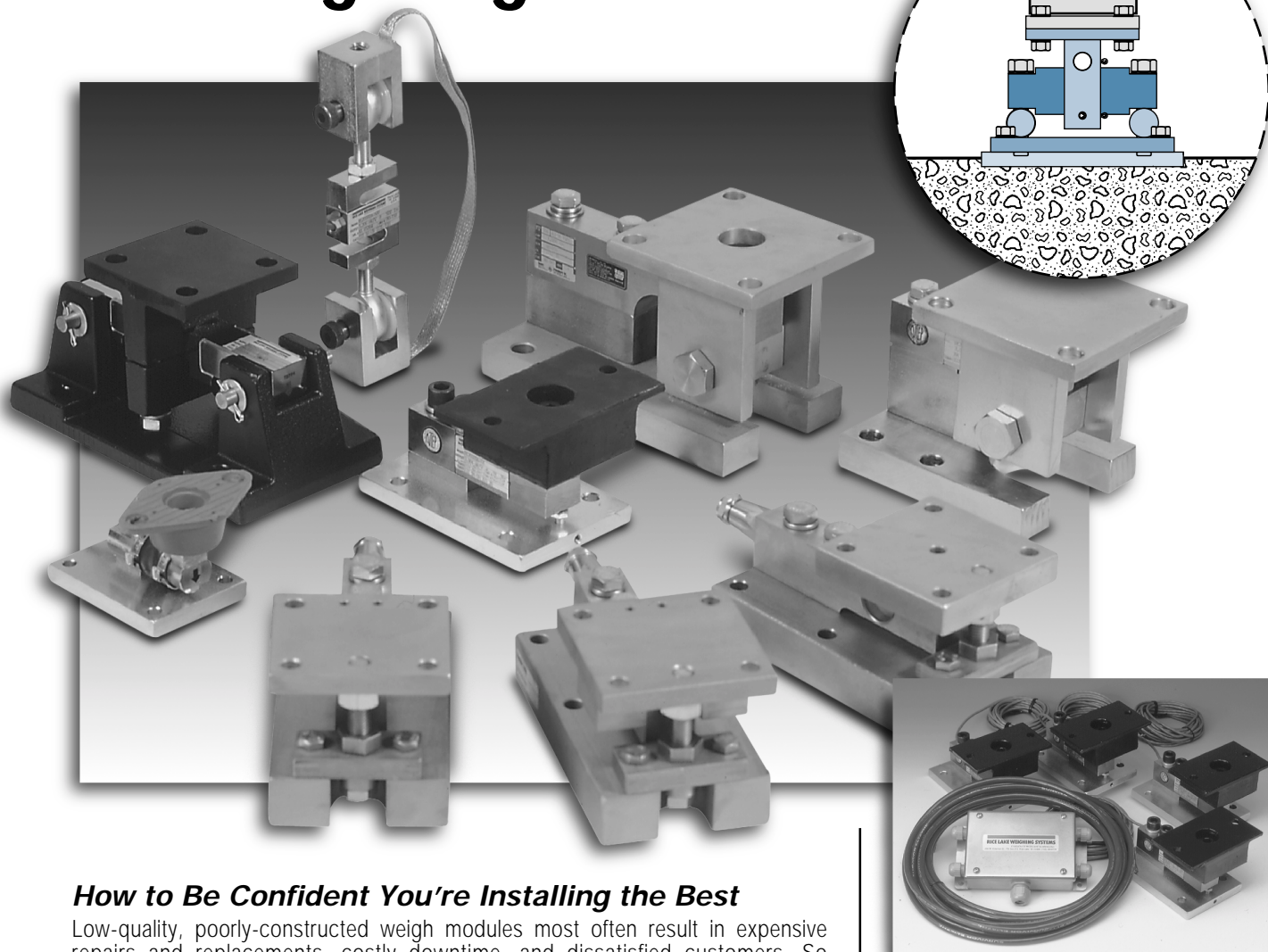


# Selecting Weigh Modules



## ***How to Be Confident You're Installing the Best***

Low-quality, poorly-constructed weigh modules most often result in expensive repairs and replacements, costly downtime, and dissatisfied customers. So how do you avoid this? And, more importantly, what should you look for in a weighing assembly?

Selecting a high-quality weigh module involves factors such as working environment and loading conditions. Based on these and other design specifications, Rice Lake Weighing Systems' experienced engineering and design staff created the most comprehensive line of weigh modules available. Most companies concentrate on one or two types of mounts. We offer over 20 mounts, including the industry's only waterproof-guaranteed weigh modules. Manufactured to the highest quality standards, our mounts come complete with mounting kits and are backed by unbeatable service.

## ***Quality Manufacturing***

Rice Lake Weighing Systems' state-of-the-art 195,000 square foot manufacturing facility includes several machining centers, allowing us to offer the highest quality at competitive prices. Our mounting assemblies are available with the best load cells in the world, including Rice Lake, Celtron, BLH, HBM, Flintec, Interface, Revere, Sensortronics, and TedeA.

ISO 9001 registered, we consistently provide the highest quality in the industry. Our quality assurance program includes comprehensive documentation and control processes. These guidelines evaluate how products are manufactured, warehoused, sold, and shipped to customers. The result is consistent product quality.

## ***Complete Mounting Kits***

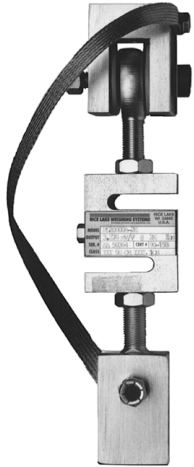
Complete mounting kits are available with our weigh modules, simplifying the selection and installation processes. Each kit comes with a detailed installation manual and a junction box and cable assembly, eliminating the need to order separate parts. These efficient mounting kits include everything needed to easily set up the weigh module.

## ***Choosing the Correct Weigh Module***

The wide variety of weigh modules we manufacture and distribute may leave you wondering what the differences are between certain models and, most importantly, which modules are best suited for your applications. This document summarizes the design of our weigh modules and explains the best applications for each.

## SUSPENDED TANKS AND HOPPERS/MECHANICAL CONVERSIONS

# Isolated Tension Cell Assembly

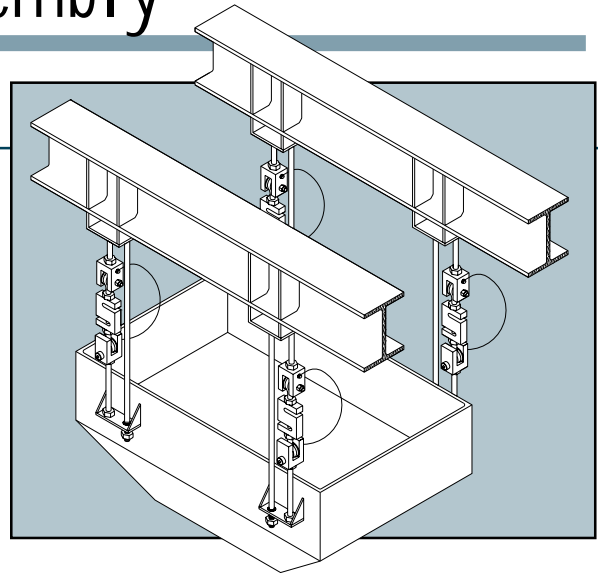


### ITCM Tank/Hopper Module

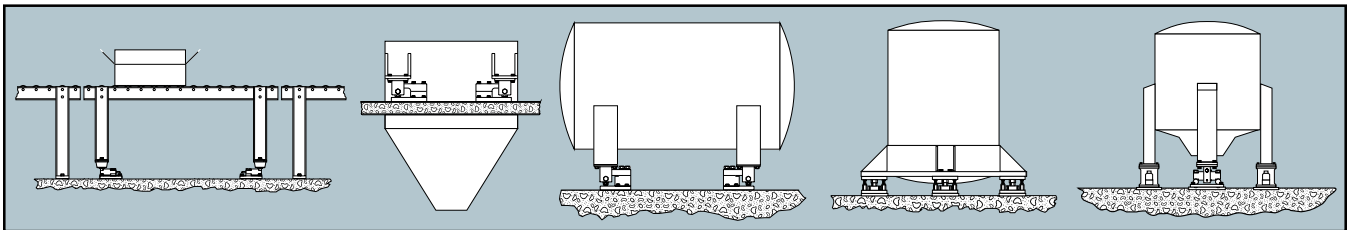
Featuring a clevis and rod end ball joint assembly, the ITCM mount is half of the overall length of traditional S-Beam tension mounts. The unique design consistently corrects loading alignment, even in difficult applications. The load cell is completely isolated from stray currents and a bonding strap provides an alternative path to ground.

**100-20,000 lb**  
Available in Alloy and Stainless Steel

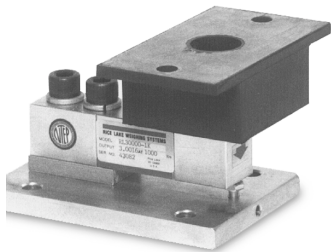
Load Cell Certifications:



## TANK/HOPPER/CONVEYOR MODULES



# Conveyor/In-Motion Weighing



### RL50210 TA Mini-Tank and Conveyor Module

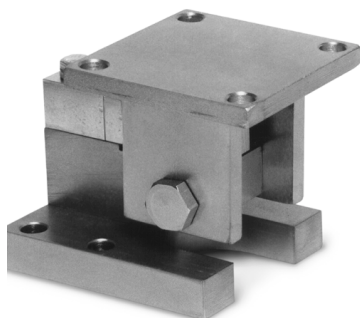
Easy-to-install, the RL50210 TA is a cost-effective solution for indoor applications where checking requirements are low and vibration and shock are high. This popular design utilizes neoprene isolation/compression mounts, allowing for minor misalignment, thermal expansion and contraction, and shock absorption.

**50-2500 lb**  
Available in  
Alloy and  
Stainless Steel

Load Cell Certifications:



(NTEP certified 1000-2500 lb capacity only)



### RL1800 Tank Module

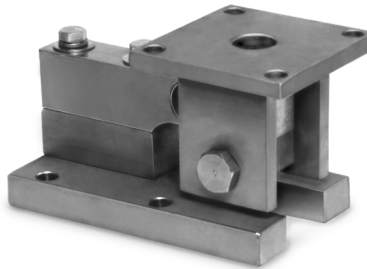
Combining self-checking and multidirectional movement capabilities, the RL1800 tolerates platform and tank movement in all directions. The center-pivoted, tension loading design incorporates spherical washers for self centering. The load is suspended on a high-strength bolt instead of the traditional wire rope, providing added durability.

**250-10,000 lb**  
Available in  
Alloy and  
Stainless Steel

Load Cell Certifications:



## Washdown/Corrosive Weighing

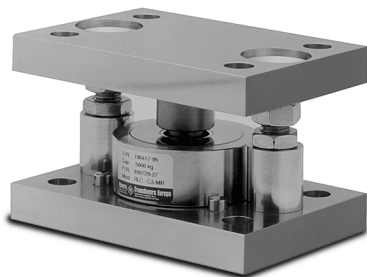


**RL1900**  
Tank Module

With a stainless steel, hermetically-sealed load cell, the RL1900 provides a solid solution for washdown environments where height is not a limiting factor. Using a rocker pin design, minimal lateral forces transfer to the load cell. Self-checking and center-pivoted, the RL1900 tolerates movement in all directions and is self-centering.

**1,000-10,000 lb**  
304 Stainless  
Steel

Load Cell Certifications:

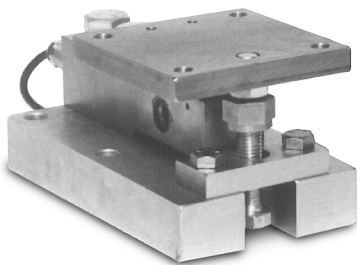


**RLC**  
Tank Module

Featuring complete stainless steel construction, the RLC provides long term reliability, even in washdown and corrosive environments. The low-profile, rocker pin design uses hardened stainless steel components on all load bearing surfaces and allows controlled movement in all directions.

**1,100-11,000 lb**  
304 Stainless  
Steel

## High-Vibration Weighing



**Paramounts EP/HS**  
Tank Module

Designed with a blind load hole, the Paramounts EP and HS low-profile mounts isolate the load cell from unwanted side and eccentric loads, providing superior accuracy in applications with extreme expansion, contraction and vibration. Integral jacking/shipping bolts allow quick field removal of load cells, and eliminate load cell damage during transport. The HS modules provide hermetically-sealed load cells for use in washdown and corrosive environments.

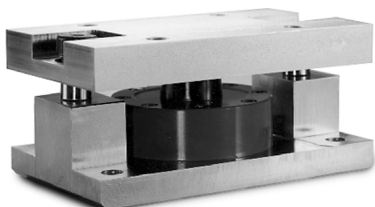
**225-22,500 lb**  
Mild Steel

Load Cell Certifications:



(NTEP certified EP model only)

## Mid- to Heavy-Capacity Weighing *Disk Compression Design*



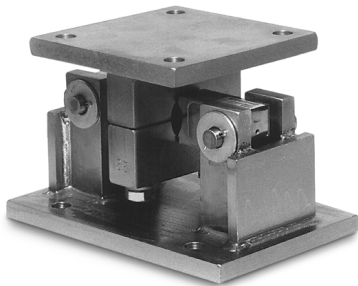
**RL2200**  
Tank Module

Self-centering in all directions, the RL2200 allows for excessive side and eccentric loads without sacrificing performance. The low-profile, easy-to-install design provides simple solutions for a wide variety of applications. Self-checking, this rugged, high-precision mount eliminates the need for check rods.

**5,000-50,000 lb**  
Available in Alloy  
and Stainless  
Steel

## TANK/HOPPER/CONVEYOR MODULES *(continued)*

# Heavy-Capacity Weighing *Double-Ended Beam Design*

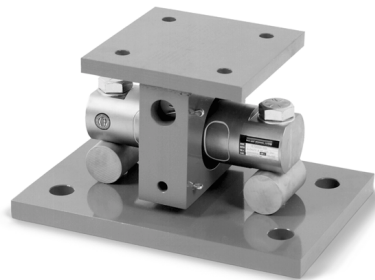


**RL1600**  
Tank Module

The RL1600's low-profile, bolt-in-place design allows the module to be bolted directly to the tank without requiring additional mounting plates or load buttons. Self-checking movement allows for thermal expansion and contraction and provides lift-off protection.

**1,000-25,000 lb**  
Cast Iron  
**1,000-75,000 lb**  
Available in Mild and  
Stainless Steel

Load Cell Certifications:



**EZ Mount 1**  
Tank Module

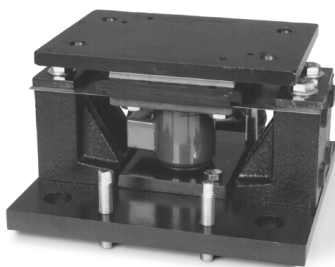
Utilizing a unique self-checking sliding pin design, the EZ Mount allows for thermal expansion and contraction, and controlled scale deck movement with minimal friction. Ideal for applications that require intrinsically safe or explosion proof areas, these low-profile, bolt-in-place mounts offer NTEP-certified and FM approved load cells.

**5,000-150,000 lb**  
Available in Mild and  
Stainless Steel

Load Cell Certifications:



# Heavy-Capacity Weighing *Canister Design*



**MAGNAMOUNT®**  
Tank/Truck/Railroad Track Module

The MagnaMount is specially designed for accurate performance in adverse heavy-capacity applications where height is not a limiting factor. Teflon-coated load plates offer freedom of movement for greater repeatability. Utilizing a unique "shielded cell" design, this durable weigh module protects the load cell from shock and side load effects, even in hostile environments.

**50,000-200,000 lb**  
Alloy Steel



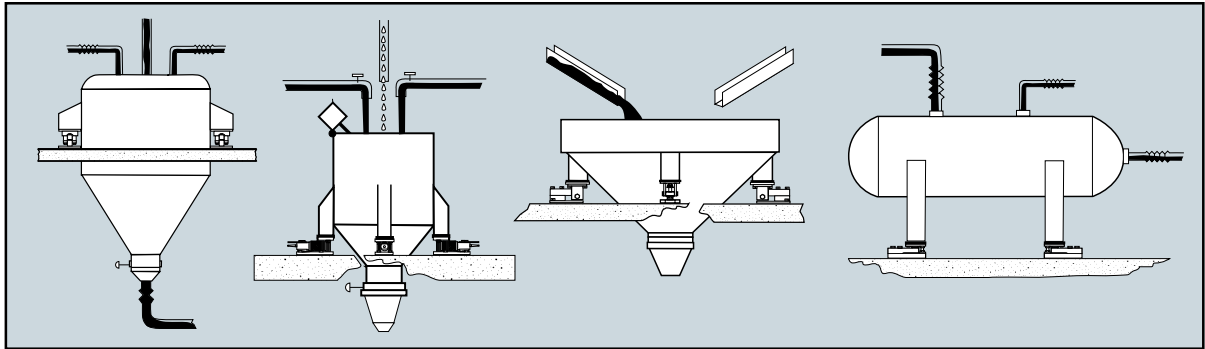
**SENSORTRONICS 65092**  
Tank/Bin/Silo Module

Featuring a free-floating top mounting plate, the 65092 offers checking provisions for thermal expansion and contraction. This simple, low profile assembly mounts directly to the foundation or structural support. A symmetrical mounting bolt allows for easy installation and maintenance.

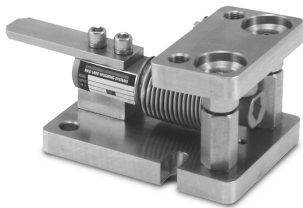
**50,000-500,000 lb**  
Alloy Steel



## TANK/HOPPER MODULES



# Hostile Environment Weighing

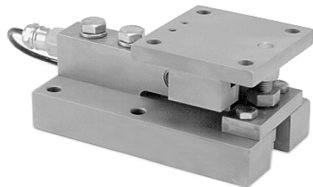


### SURVIVOR® 1700HE Weigh Module Kit

The SURVIVOR 1700HE features a precision-machined, weldless design for maximum pressure washdown effectiveness. Integral jacking bolts simplify installation and hermetically-sealed, OIML C3 load cells provide consistently accurate weighments. The bolt-in-place, self-checking design isolates the load cells from side loads, overloads, and underloads, eliminating the need for extraneous hardware.

**11-11,000 lb**  
Stainless Steel

Load Cell Certifications:

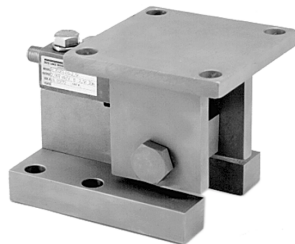


### PARAMOUNTS® Weigh Module System

Incorporating three weigh module designs, the Paramounts system offers superior accuracy, even in applications with extreme expansion, contraction and vibration. A fixed pin module enables rotation while a single side-stop module allows expansion and contraction in one direction. With the addition of one to six free-sliding modules, the Paramounts system offers the free motion to eliminate unwanted side loads, as well as the strength to keep the vessel intact. This low-profile, bolt-in-place system includes integral jacking/shipping bolts for prevention of accidental lift-off and quick removal of load cells.

**225-22,500 lb**  
Stainless Steel

Load Cell Certifications:

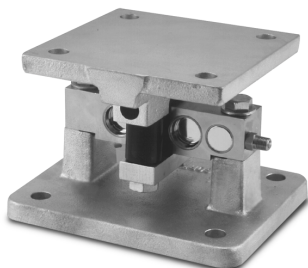


### SURVIVOR® 1855HE Weigh Module Kit

All stainless steel construction and stainless steel, hermetically-sealed load cells make the SURVIVOR 1855HE ideal for medium-capacity washdown applications. Internal height adjustment simplifies installation by eliminating the need for shims or external hardware. A Teflon-jacketed cable and integral conduit adapter heighten chemical and moisture resistance. With standard NTEP-certified, 1:5000 division class III load cells, the 1855HE provides up to 0.02% total error.

**1,000-10,000 lb**  
Stainless Steel

Load Cell Certifications:



### SURVIVOR® 2100HE Weigh Module Kit

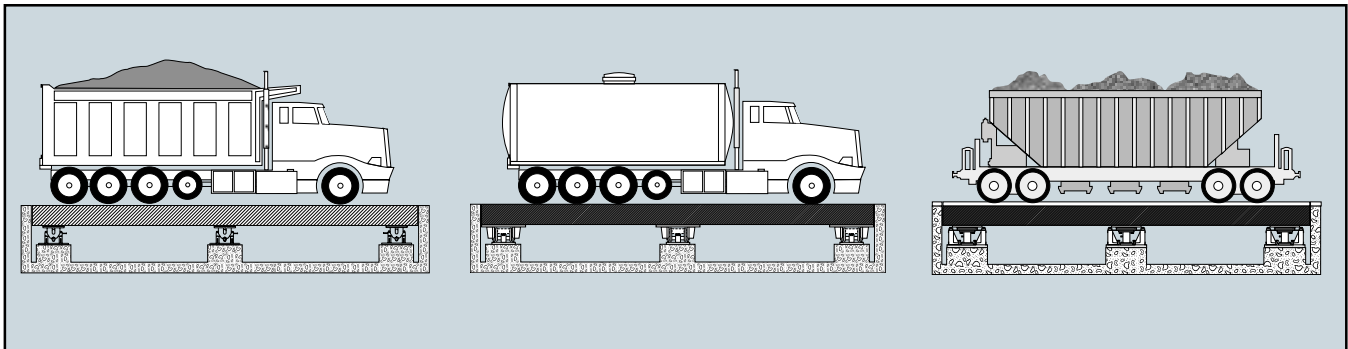
Incorporating an articulating load plate, hardened load pin and double-ended beam load cell into one simple design, the SURVIVOR 2100HE tolerates eccentric and side loads of up to 100% of capacity. NTEP-certified, 1:5000 division class III load cells yield up to 0.02% total error. Teflon-jacketed cable provides superior chemical resistance and an integral conduit adapter offers added washdown protection.

**20,000-100,000 lb**  
Stainless Steel

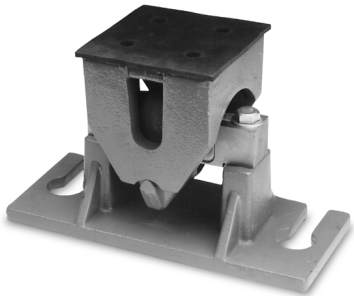
Load Cell Certifications:



# TRUCK/TRACK MODULES



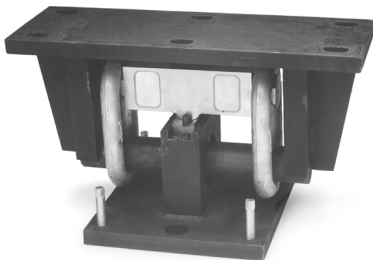
## Heavy-Capacity Truck/Railroad Track Weighing



### **TSA** Truck/Livestock Scale Module

Constructed of cast steel and iron with primer coating, the TSA provides exceptional durability in rugged environments. The "Unilink" suspension design checks lateral movement of the assembly, while allowing controlled floating of the scale deck. Self-checking, the TSA eliminates the need for check rods, expansion assemblies and other peripheral hardware.

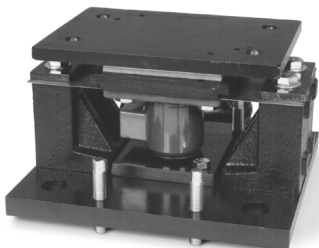
**10,000-75,000 lb**  
Available in Cast  
Steel and Iron with  
Primer Coating



### **TRANSLINK™** Tank/Truck Module

Ideal for mechanical conversions and new scale installations, the Translink weigh module allows the scale platform to move freely in all directions in a horizontal plane. A unique parallel link design eliminates the need for check rods. The pendulous action of the links completely self-centers the weighing platform, providing consistency, accuracy, and repeatability.

**25,000-100,000 lb**  
Tool Steel



### **MAGNAMOUNT®** Tank/Truck/Railroad Track Module

The MagnaMount is specially designed for accurate performance in adverse heavy-capacity applications where height is not a limiting factor. Teflon-coated load plates offer freedom of movement for greater repeatability. Utilizing a unique "shielded cell" design, this durable weigh module protects the load cell from shock and side load effects, even in hostile environments.

**50,000-200,000 lb**  
Alloy Steel

Your Rice Lake Weighing Systems Distributor is:

**RICE LAKE WEIGHING SYSTEMS**

Industrial Solutions on a Global Scale®



230 West Coleman Street • Rice Lake, WI 54868 • USA  
TEL: 715-234-9171 • FAX: 715-234-6967 • WEB SITE: <http://www.rlws.com>