

SURVIVOR[®]

SR-PT SERIES

CONCRETE DECK PIT-TYPE TRUCK SCALES



**Toughest
Truck Scales
On Earth.**

RICE LAKE WEIGHING SYSTEMS

Industrial Solutions on a Global Scale[®]

SURVIVOR® SR-PT CONCRETE DECK PIT-TYPE TRUCK SCALE

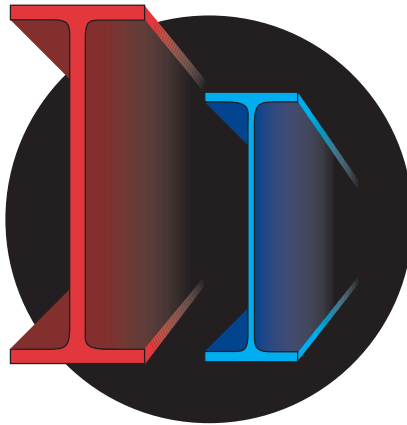


Self-centering load cell mounts in pendulum suspension system return to dead center without check rods.

The SURVIVOR SR-PT scale incorporates 24-inch* main I-beams and 8-inch structural steel cross-members located approximately every four feet, virtually eliminating deflection under even the heaviest loads. Combining the heavier design (90,000 lb dual axle loads) and low weighbridge deflections (less than 1:900) means the SR-PT can be used for years in the heaviest of application sites.

The SURVIVOR SR-PT Series truck scale offers fast processing of trucks with minimal impact on your facility's traffic flow. Installing a pit-type truck scale eliminates approach ramps that break up traffic patterns and cause delays.

The figure to the right illustrates the difference between the massive RLWS main beam and typical truck scale beams.



Standard Features:

- Three standard widths: 10, 11, and 12 feet (up to 14 ft NTEP certified as a special order)
- Lengths from 10 feet through 117 feet
- One 2' x 2' square manhole
- 75,000 lb capacity load cells and pre-assembled mounts
- Junction box(es) appropriate for number of load cells utilized
- Up to 90,000 lb Concentrated Load Capacity (CLC)
- Up to 2.65 "r" factor
- 6"-8" reinforced concrete deck
- Up to 200,000 lb full scale capacity
- Very low deflection (1:900) under maximum load

Options/Accessories:

- Additional manholes (square or round)
- Light fixture with bulb protection screen/guard
- Sump pump (UL listed power supply)
- Pit venting system (exhaust fan, UL listed power supply)
- Lightning protection package
- Special loading configurations available

*States with 48" pit clean-out requirements must specify 18" main beams at time of order.

Concrete, deck rebar, and deck sheeting not included in package.

SR-PT Series Specifications / Dimensions:

10-foot width:

Length	Full Scale Capacity	Part Number	Model Number	Modules	Load Cells	"r" Factor	CLC Rating
10 ft	60 tons	51341	SR1010-PC-60	1	4	2.06	35
20 ft	60 tons	51342	SR2010-PC-60	1	4	2.06	35
24 ft*	60 tons	51343	SR2410-PC-60	1	4	2.06	35
40 ft	60 tons	51344	SR4010-PC-60	2	6	2.65	45
47 ft*	60 tons	51345	SR4710-PC-60	2	6	2.65	45
60 ft	100 tons	51346	SR6010-PC-100	3	8	2.65	45
70 ft	100 tons	51347	SR7010-PC-100	3	8	2.65	45
80 ft	100 tons	51348	SR8010-PC-100	4	10	2.65	45
93 ft*	100 tons	51349	SR9310-PC-100	4	10	2.65	45
100 ft	100 tons	51350	SR10010-PC-100	5	12	2.65	45
117 ft*	100 tons	51351	SR11710-PC-100	5	12	2.65	45

11-foot width:

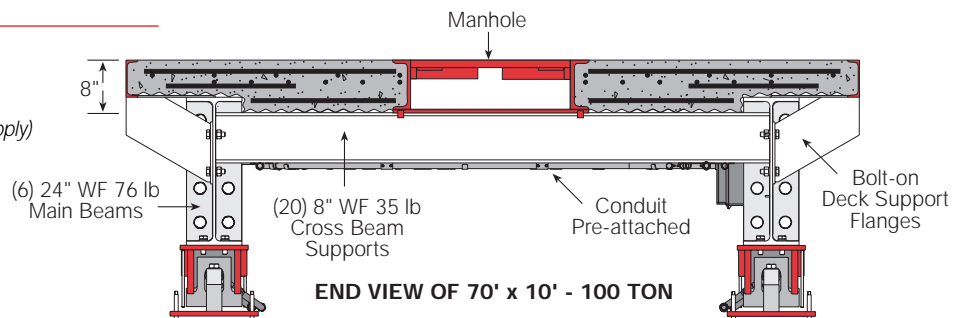
Length	Full Scale Capacity	Part Number	Model Number	Modules	Load Cells	"r" Factor	CLC Rating
10 ft	60 tons	51352	SR1011-PC-60	1	4	2.06	35
20 ft	60 tons	51353	SR2011-PC-60	1	4	2.06	35
24 ft*	60 tons	51354	SR2411-PC-60	1	4	2.06	35
40 ft	60 tons	51355	SR4011-PC-60	2	6	2.65	45
47 ft*	60 tons	51356	SR4711-PC-60	2	6	2.65	45
60 ft	100 tons	51357	SR6011-PC-100	3	8	2.65	45
70 ft	100 tons	51358	SR7011-PC-100	3	8	2.65	45
80 ft	100 tons	51359	SR8011-PC-100	4	10	2.65	45
93 ft*	100 tons	51360	SR9311-PC-100	4	10	2.65	45
100 ft	100 tons	51361	SR10011-PC-100	5	12	2.65	45
117 ft*	100 tons	51362	SR11711-PC-100	5	12	2.65	45

12-foot width:

Length	Full Scale Capacity	Part Number	Model Number	Modules	Load Cells	"r" Factor	CLC Rating
10 ft	60 tons	51363	SR1012-PC-60	1	4	2.06	35
20 ft	60 tons	51364	SR2012-PC-60	1	4	2.06	35
24 ft*	60 tons	51365	SR2412-PC-60	1	4	2.06	35
40 ft	60 tons	51366	SR4012-PC-60	2	6	2.65	45
47 ft*	60 tons	51367	SR4712-PC-60	2	6	2.65	45
60 ft	100 tons	51368	SR6012-PC-100	3	8	2.65	45
70 ft	100 tons	51369	SR7012-PC-100	3	8	2.65	45
80 ft	100 tons	51370	SR8012-PC-100	4	10	2.65	45
93 ft*	100 tons	51371	SR9312-PC-100	4	10	2.65	45
100 ft	100 tons	51372	SR10012-PC-100	5	12	2.65	45
117 ft*	100 tons	51373	SR11712-PC-100	5	12	2.65	45

* 24 ft actual = 23' 2 1/2", 47 ft actual = 46' 6 1/2", 93 ft actual = 92' 2 1/2", 117 ft actual = 116' 6 1/2"

Pit scales are designed to fit inside correctly-sized pits. Example: 70' x 10' scale is actually 69' 10 1/2" L x 9' 10 1/2" W.



Your Rice Lake Weighing Systems Distributor is:

RICE LAKE WEIGHING SYSTEMS

Industrial Solutions on a Global Scale®

230 W. Coleman St. • Rice Lake, WI 54868 • USA
TEL: 715-234-9171 • FAX: 715-234-6967 • www.rlws.com

© Rice Lake Weighing Systems 1999 PN 53526 11/99
Specifications subject to change without notice

