

S-Beams

620, Stainless Steel Page 305



Ideally suited for harsh environments, lever conversions, hopper/tanks and vibratory feeders, general purpose weighing and force measurement applications. The stainless steel, welded cavity design provides protection against water and corrosive materials. Capacities from 500 to 5000 kg (1102.3 to 11,023.1 lb). Complete with 5m (16.4') of load cell cable.



Available upon request

Single-Ended Beams

3411/3421, Alloy Steel Page 306



This family of high quality single-ended beams is available in both alloy and stainless steel with NTEP approval. These products are ideal for low profile platforms, pallet truck weighers, tanks and silos. The durable stainless steel product offering is new, and provides a solid choice for more severe weighing applications. Both versions are available in capacities ranging from 1,000 to 10,000 lb. (453.6 to 4535.9 kg). A standard 10' (3m) cable is provided.



Available upon request

3510-lbs, Stainless Steel Page 307



Low profile and all-welded sealing combined with high accuracy makes the 3510 ideally suited for low-profile platforms, weigh modules, tanks and silos. Hermetic sealing and polyurethane shielded cable enable it to function in harsh environments while maintaining its operating specifications. Capacities from 1000 to 4000 lb (453.6 to 1814.4 kg).



3510-kg, Stainless Steel Page 308



The industry's only 6000 division OIML-approved single-ended beam. Low profile and all-welded sealing combined with high accuracy makes the 3510 ideally suited for low-profile platforms, weigh modules, tanks and silos. Hermetic sealing and polyurethane shielded cable enable it to function in harsh environments while maintaining its operating specifications. Capacities from 500 to 5000 kg (1102.3 to 11,023.1 lb).



305, Aluminum Page 309



This unique new bending beam sensor is specially designed for hanging applications. An example of this product's use would be the weighing of small bags of fluid for the medical industry, but an infinite amount of other industrial applications are also possible. An inexpensive product to mount allows for this to be an economical solution to many problems that result in difficulties for standard load cells. Designed for long-term stability and low sensitivity to side-loading, this beam is available in capacities ranging from 5 to 30 kg (11.0 to 66.1 lb). Provided with a standard 1m (3.3') cable.

Single-Ended Beams (Continued)

355, Stainless Steel Page 310



Welded stainless steel construction, hermetic sealing and polyurethane shielded cable enables the 355 to function in harsh environments while maintaining its operating specifications. Suitable for low-profile platforms, weighing and packing machines, electromechanical conversions and general-purpose weighing applications. Capacities from 5 to 500 kg (11.0 to 1102.3 lb).



Double-Ended Beams

4158, Alloy Steel Page 311



The model 4158 is an alloy steel, environmentally sealed, double-ended beam product that is interchangeable with several other manufacturers' designs. This product features the high quality manufacturing techniques used by Tede, and is available in capacities ranging from 10,000 to 75,000 lb (4535.9 to 34,019.4 kg). Rugged and reliable, this family of products is NTEP certified from 20,000 to 75,000 lb. Each of these products is available with a 25' (7.6m) cable.



Single Points

1022, Aluminum Page 312



Very low-profile single-point load cell designed for direct mounting in low-cost platforms. Anodized aluminum construction is combined with two-beam machined technology to provide an affordable load cell option. Capacities from 3 to 35 kg (6.6 to 77.1 lb). Complete with 500mm (19.7") of load cell cable.



1010, Aluminum, Potted/Unpotted Page 313



Off-center loading load cell. Designed for direct mounting of a weighing platform and simplifying construction of platform scales. Long-term stability and durability are maintained. Load cells with potted cavities are available for improved performance in damp environments. Capacities from 3 to 90 kg (6.6 to 196.4 lb).



1030, Aluminum Page 314



This high-performance product is the standard in many of today's postal or price computing scales. This very low profile 3-beam designed single point is insensitive to off-center loads, which is a critical element in providing accurate results in the applications above. The product is also coated with a unique humidity-resistant protective coating to assure long-term stability in harsh environments and extreme temperatures. This model is available in capacities ranging from 3 to 15 kg (6.6 to 33.1 lb), and comes standard with a 1m (3.3') cable.



1042, Aluminum Page 315



A lower-profile single-point for platform weighing. This model is constructed of aluminum, and is a two-beam design. This design offers high immunity to side forces, and is specially coated to provide humidity resistance. Capacities from 1 to 100 kg (2.2 to 220.5 lb). Complete with 3.1m (10') of load cell cable.



Single Points (Continued)

1040, Aluminum, Potted/Unpotted Page 316



Low-profile, off-center loading load cell. Designed for direct mounting of weighing platforms, hanging scales and other low-capacity beam applications. Long-term stability and durability are maintained. Load cells with potted cavities are available for improved performance in damp environments. Capacities from 5 to 100 kg (11.0 to 220.5 lb).



Available upon request

1130, Stainless Steel Page 317



The Tedea 1130 is a stainless steel single point load cell that is designed for high performance in harsh environments. This product is primarily designed for platform weighing, but the economical cost makes it an appropriate selection for numerous applications. Capacities range from 7 to 100kg (15.4 to 220.5lb), and each unit is provided complete with 3.3' (1m) of load cell cable.



1140, Stainless Steel, Potted Page 318



Low-profile, off-center loading load cell. Designed for direct mounting of weighing platforms, hanging scales and other low-capacity beam applications. Stainless steel construction and a unique humidity-resistant protective coating provide long-term stability, even in harsh environments. Load cells with potted cavities are available for improved performance in damp environments. Capacities from 15 to 150 kg (33.1 to 330.7 lb).



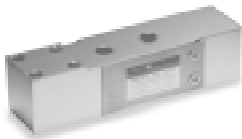
1240, Stainless Steel Page 319



The 1240 is a low-profile single point that is compact in design, considering the 200 and 250 kg (440.9 and 551.2 lb) capacity range. This cell is ideally suited for applications in light industrial or people weighing where overall deck height is a concern. The 3-beam design makes the load cell less likely to be impacted by side forces and mounting imperfections. The stainless steel construction and humidity-resistant coating makes this load cell a preferred solution even in harsh environments with extreme temperatures. Each unit is provided with a standard 1 m (3.3') cable.



1241, Aluminum Page 320



The 1241 combines a low profile, 3-beam off-center design for direct mounting to weighing platforms, hanging scales, and other eccentric loading applications. The load cell features four mounting holes instead of the traditional two, to provide additional loading stability. The 1241 is constructed of aluminum, and sealed using a unique humidity-resistant protective coating to assure durability and long life.



1260, Aluminum Page 321



High-capacity, off-center loading aluminum single-point. This model is of the two-beam design, and is specially coated to assure durability in harsh environments. Capacities from 50 to 635 kg (110.2 to 1399.9 lb). Complete with 3.1m (10') of load cell cable.



Available upon request

Single Points (Continued)

1250, Aluminum, Potted Page 322



High-capacity off-center loading load cell accurately weighs loads from 50 to 635 kg (110.2 to 1399.9 lb). Long-term stability and durability are maintained. Load cells with potted cavities are available for improved performance in damp environments.



Available upon request

1320, Aluminum Page 323



Model 1320 is a high-capacity single-point load cell. Direct mounting of low-profile platforms simplifies the construction of floor scales, weigh bars, hanging scales and other types of weighing devices. Individually adjusted to eliminate corner errors. Capacities from 1000 to 2000 kg (2204.6 to 4409.2 lb).



Available upon request

1510, Stainless Steel Featured Products Section Page 5, Page 324

240, Alloy Steel/Stainless Steel, Fluid Damped Page 325



These load cells decrease weighing time and improve weighing accuracy in high-speed weighing applications. Since damping also protects the cells from shock and vibration, the load cell can endure harsh conditions, such as those encountered in repeated shock-loading applications. This also enables damped load cells to last longer than undamped load cells in any application. The cells are sealed, protecting them in washdown situations. Capacities from 2 to 50 kg (4.4 to 110.2 lb).



Available upon request

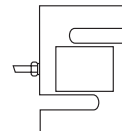
9010, Aluminum, Fluid Damped Page 326



Model 9010 is a self-contained weighing module for use in repeated shock-loading applications, or where fast weighing and settling times are required. Each is custom manufactured per specific application requirements. Capacities from 3 to 50 kg (5.5 to 110.2 lb). See page 318 for Model 9010 Application Definition Form.



220, Stainless Steel Featured Products Section Page 7, Page 327

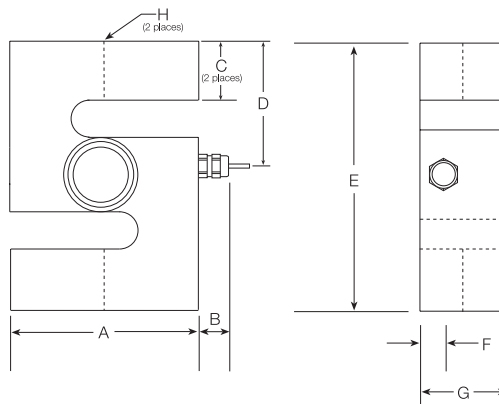


620 S-Beam, Stainless Steel

Hermetically Sealed, IP68, NTEP 1:3000 Single Cell, 1:5000 Multiple Cell, Class III



Available upon request



RATED CAPACITY	DIMENSIONS							
	A	B	C	D	E	F	G	H
kg/millimeters								
500-1000	73.2	18.8	19.8	47.0	94.0	10.9	33.5	1/2-20 UNF
2000	73.2	18.8	19.8	47.0	94.0	10.9	33.5	3/4-16 UNF
5000	104.6	18.8	27.2	62.7	125.5	14.5	47.2	1-12 UNF
lb/inches								
1102.3-2204.6	2.88	.74	.78	1.85	3.70	.43	1.32	1/2-20 UNF
4409.2	2.88	.74	.78	1.85	3.70	.43	1.32	3/4-16 UNF
11,023.1	4.12	.74	1.07	2.47	4.94	.57	1.86	1-12 UNF

SPECIFICATIONS:

Full Scale Output: 2.0 mV/V
 Bridge Resistance: 350 ohms, nominal
 Material/Finish: Stainless steel
 Temperature: Compensated range
 14°F to 104°F/-10°C to 40°C
 Manufacturer Model Number: 0620-XXXX001
 Safe Overload: 150% Full scale
 Rated Excitation: 10V AC/DC (15V maximum)

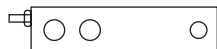
Total Error: 0.02% Full scale
 Insulation Resistance: 1000 megohms
 Seal Type: Hermetically sealed, IP68
 Cable Length: 5m/16.4'
 Cable Color Code:
 Blue + Excitation
 Black - Excitation
 Green ... + Sense
 Gray - Sense
 White + Signal
 Red - Signal
 Warranty: 2 years

620 ORDER INFORMATION

Load Rating	Part #	Suggested List Price
500 kg (1102.3 lb)	36389	\$650.00
1000 kg (2204.6 lb)	36390	\$650.00
2000 kg (4409.2 lb)	36391	\$650.00
5000 kg (11,023.1 lb)	36392	\$815.00

WEIGH MODULE AVAILABLE

Model	Page #
ITCM Isolated Tension Cell Mount	335

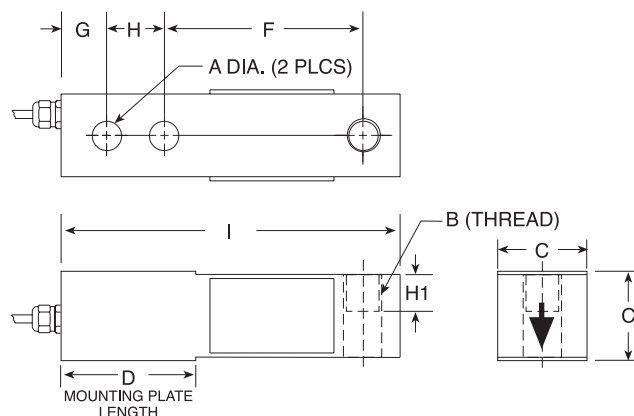


3411/3421 Single-Ended Beam, Alloy & Stainless Steel

NTEP 1:3000 Single Cell, 1:5000, Multiple Cell, Class III, IP67



Available upon request



RATED CAPACITY	DIMENSIONS								
	A	B	C	D	F	G	H	H1	I
lb/inches									
1000-4000	.53	1/2-20 UNF	1.24	2.25	3.00	.63	1.00	.60	5.12
5000-10,000	.78	3/4-16 UNF-2B	1.49	3.00	3.75	.75	1.50	.75	6.75
kg/millimeters									
453.6-1814.4	13.5	1/2-20 UNF	30.5	33.9	76.2	16.0	25.4	15.2	130.0
2268.0-4535.9	19.8	3/4-16 UNF-2B	37.8	76.2	95.3	19.1	35.6	19.1	171.5

SPECIFICATIONS:

Full Scale Output:	3.0 mV/V	Insulation Resistance:	5000 megohms
Bridge Resistance:	350 ohms, nominal	Deflection at Capacity:	1000-10,000 lb = .015"/.4mm
Material/Finish:	High-alloy steel, nickel plated	Seal Type:	Environmentally protected, IP67
Temperature:	Compensated range 14°F to 104°F/-10°C to 40°C	Cable Length:	10'/3.1m
Manufacturer		Cable Color Code:	Red + Excitation Black - Excitation Blue + Sense Brown - Sense Green + Signal White - Signal
Model Number:	3421-XXXX001 (Alloy, 5k-10k lbs) 3421-XXXX051 (Stainless Steel, 5k-10k lbs)	Warranty:	2 years
Safe Overload:	150% Full scale		
Rated Excitation:	10V AC/DC (15V maximum)		
Total Error:	0.03% Full scale		

3411/3421 ORDER INFORMATION

Load Rating	Part #	Suggested List Price
Alloy Steel		
1000 lb (453.6 kg)	29903	\$295.00
2500 lb (1134.0 kg)	29904	\$295.00
4000 lb (1814.4 kg)	29905	\$295.00
5000 lb (2268.0 kg)	29906	\$375.00
10,000 lb (4535.9 kg)	29907	\$375.00
Stainless Steel		
1000 lb (453.6 kg)	47871	\$350.00
2500 lb (1134.0 kg)	47872	\$350.00
4000 lb (1814.4 kg)	47873	\$350.00
5000 lb (2268.0 kg)	47874	\$420.00
10,000 lb (4535.9 kg)	47875	\$445.00

INTERCHANGEABLE PRODUCTS

Manufacturer	Model
Rice Lake Weighing Systems	(see page 102) RL30000
Revere Transducers	(see page 238) 5123
Rice Lake Weighing Systems	(see page 104) RL39123*
Revere Transducers	(see page 239) 9123*

* Stainless

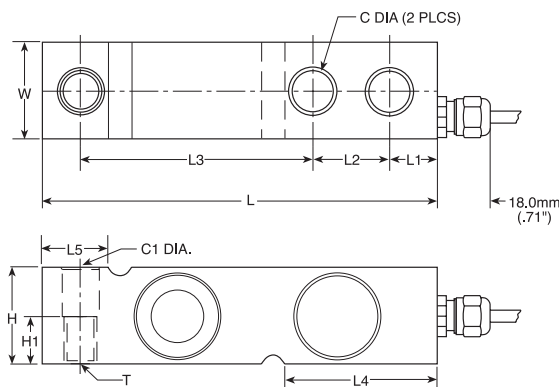
WEIGH MODULE AVAILABLE

Model	Page #
RL1800 Series	40
RL50210TA	30



3510-lbs Single-Ended Beam, Stainless Steel

Hermetically Sealed, IP68, NTEP 1:3000 Single Cell, 1:5000 Multiple Cell, Class III



RATED CAPACITY	DIMENSIONS										
	C	C1	H	H1	L	L1	L2	L3	L4	L5	T
lbs/inches											
1000-4000	.53	.53	1.26	.63	5.12	.62	1.00	3.00	1.97	.91	1/2-20UNF-2B
kg/millimeters											
453.6-1814.4	13.5	13.5	32.0	16.0	130.0	15.8	25.4	76.2	50.0	23.1	1/2-20UNF-2B

SPECIFICATIONS:

Full Scale Output:	3.0 mV/V
Bridge Resistance:	350 ohms, nominal
Material/Finish:	Stainless steel
Temperature:	Compensated range 14°F to 104°F/-10°C to 40°C
Manufacturer	
Model Number:	3510-XXXX101
Safe Overload:	150% Full scale
Rated Excitation:	10V AC/DC (15V maximum)
Total Error:	0.02% Applied load

Insulation Resistance:	1000 megohms
Deflection at Capacity:	1000-4000 lb ≤ .4mm/.015"
Seal Type:	Hermetically sealed*, IP68
Cable Length:	5m/16.4'
Cable Color Code:	Blue + Excitation Black - Excitation Green + Sense Grey - Sense White + Signal Red - Signal
Warranty:	2 years

3510-lbs ORDER INFORMATION

Load Rating	Part #	Suggested List Price
1000 lb (453.6 kg)	36458	\$485.00
2500 lb (1134.0 kg)	36460	\$485.00
4000 lb (1814.4 kg)	36461	\$485.00

INTERCHANGEABLE PRODUCTS

Manufacturer	Model
Rice Lake Weighing Systems	(see page 110) RL35082
Sensortronics	(see page 278) 65083S

WEIGH MODULE AVAILABLE

Model	Page #
1700HE	16

*Conduit is recommended for maximum protection against the ingress of water and moisture through the cable entry.

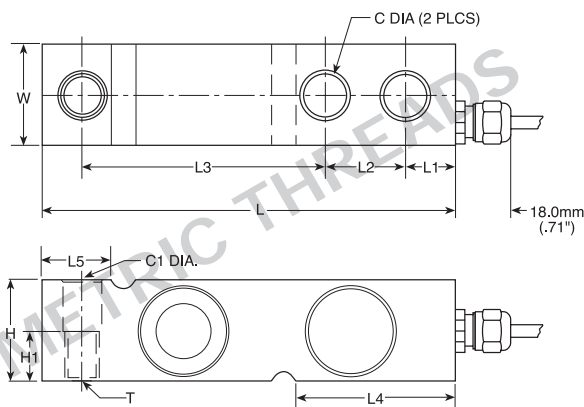
USA: 800-472-6703 • Canada/Mexico: 800-321-6703 • International: 715-234-9171

Prices & Specifications subject to change without notice



3510-kg Single-Ended Beam, Stainless Steel

Hermetically Sealed, IP68, OIML C6/C3



RATED CAPACITY	DIMENSIONS											
	C	C1	H	H1	L	L1	L2	L3	L4	L5	T	W
kg/millimeters												
500-2000	13.5	13.5	32.0	16.0	130.0	15.8	25.4	76.2	50.5	23.5	M12 x 1.75 Thrd.	32.0
5000	20.5	20.5	48.0	—	171.5	19.0	38.1	95.3	70.0	37.0	—	36.5
lb/inches												
1102.3-4409.2	.53	.53	1.26	.63	5.12	.62	1.00	3.00	1.99	.93	M12 X 1.75 Thrd.	1.26
11,023.1	.80	.80	1.89	—	6.75	.75	1.50	3.75	2.76	1.46	—	1.44

SPECIFICATIONS:

Full Scale Output:	2.0 mV/V
Bridge Resistance:	350 ohms, nominal
Material/Finish:	Stainless steel
Temperature:	Compensated range 14°F to 104°F/-10°C to 40°C
Manufacturer	
Model Number:	3510-XXXX101
Safe Overload:	150% Full scale
Rated Excitation:	10V AC/DC (15V maximum)
Total Error:	0.02% Applied load

Insulation Resistance:	1000 megohms
Deflection at Capacity:	500-5000 kg ≤ .4mm/.015"
Seal Type:	Hermetically sealed*, IP68
Cable Length:	5m/16.4'
Cable Color Code:	Blue + Excitation Black - Excitation Green + Sense Grey - Sense White + Signal Red - Signal
Warranty:	2 years

3510-kg ORDER INFORMATION

Load Rating	Part #	Suggested List Price
C6 500 kg (1102.3 lb)	30161	\$485.00
C6 1000 kg (2204.6 lb)	30162	\$485.00
C3 2000 kg (4409.2 lb)	30163	\$485.00
C3 5000 kg (11,023.1 lb)	30164	\$555.00

INTERCHANGEABLE PRODUCTS

Manufacturer	Model
Rice Lake Weighing Systems	(see page 114) RLHTO

WEIGH MODULE AVAILABLE

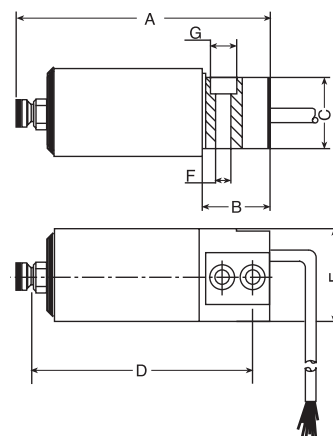
Model	Page #
1700HE	16

*Conduit is recommended for maximum protection against the ingress of water and moisture through the cable entry.

USA: 800-472-6703 • Canada/Mexico: 800-321-6703 • International: 715-234-9171



305 Single-Ended Beam, Aluminum with Stainless Steel Cover



RATED CAPACITY	A	B	C	DIMENSIONS D	E	F	G
kg/millimeters							
5-30	94.5	26.0	26.0	84.5	31.0	5.2	9.0
lb/inches							
11-66.2	3.72	1.02	1.02	3.32	1.22	.20	.35

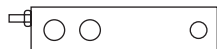
SPECIFICATIONS:

Full Scale Output: 2.0 mV/V
 Bridge Resistance: 350 ohms, nominal
 Material/Finish: Aluminum, with stainless cover
 Temperature: Compensated range
 14°F to 104°F/-10°C to 40°C
 Manufacturer
 Model Number: 0305-XXXX201
 Safe Overload: 150% Full scale
 Rated Excitation: 10V AC/DC (20V maximum)
 Total Error: 0.02% Full scale
 Insulation Resistance: 5000 ohms

Deflection at Capacity: 5-30 kg = .015"/.4mm
 Seal Type: Environmentally protected
 Cable Length: 1m/3.3'
 Cable Coloring: Green ... + Excitation
 Black - Excitation
 Blue + Sense
 Brown ... - Sense
 Red + Signal
 White - Signal
 Warranty: 2 years

305 ORDER INFORMATION

Load Rating	Part #	Suggested List Price
5 kg (11 lb)	47887	\$250.00
7 kg (15.4 lb)	47888	\$250.00
10 kg (22.1 lb)	47889	\$250.00
15 kg (33.1 lb)	47890	\$250.00
20 kg (44.1 lb)	47891	\$250.00
30 kg (66.2 lb)	47892	\$250.00

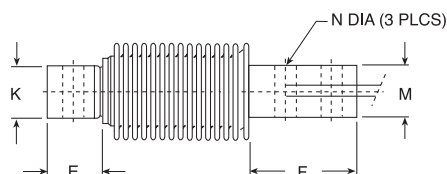
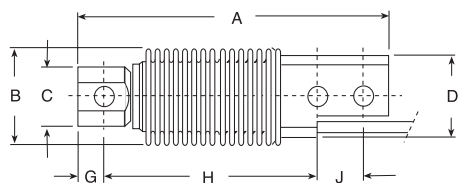


355 Single-Ended Beam, Stainless Steel

Hermetically Sealed, IP68, NTEP 1:4000 Single Cell, 1:5000, Multiple Cell, Class III



Available upon request



RATED CAPACITY	DIMENSIONS											
	A	B	C	D	E	F	G	H	J	K	M	N
kg/millimeters												
5-500	120.0	40.0	23.0	32.0	20.5	45.5	10.0	82.0	18.0	20.0	20.0	8.20
lb/inches												
11.0-1102.3	4.72	1.61	.91	1.26	.81	1.79	.39	3.23	.71	.79	.79	.32

SPECIFICATIONS:

Full Scale Output:	2.0 mV/V
Bridge Resistance:	350 ohms, nominal
Material/Finish:	Stainless steel
Temperature:	Compensated range 14°F to 104°F/-10°C to 40° C
Manufacturer	
Model Number:	0355-XXXX001
Safe Overload:	150% Full scale
Rated Excitation:	10V AC/DC (15V maximum)
Total Error:	0.02% Full scale

Insulation Resistance:	1000 megohms
Deflection at Capacity:	5-250 kg ≤ .4mm/.015"
Seal Type:	Hermetically sealed, IP68
Cable Length:	10'/3m
Cable Color Code:	Blue + Excitation Black - Excitation White + Signal Red - Signal Green + Sense Gray - Sense
Warranty:	2 years

355 ORDER INFORMATION

Load Rating	Part #	Suggested List Price
5 kg (11.0 lb)	30165	\$525.00
10 kg (22.0 lb)	30166	\$525.00
20 kg (44.1 lb)	30167	\$525.00
50 kg (110.2 lb)	30168	\$525.00
100 kg (220.5 lb)	30169	\$525.00
200 kg (440.9 lb)	30170	\$525.00
250 kg (551.2 lb)	30171	\$525.00
500 kg (1102.3 lb)	36463	\$525.00

INTERCHANGEABLE PRODUCTS

Manufacturer	Model
Rice Lake Weighing Systems	(see page 123) RLHBB
Revere Transducers	(see page 244) SHB

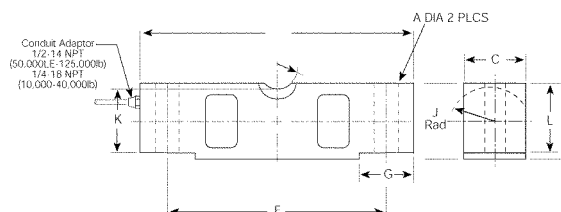
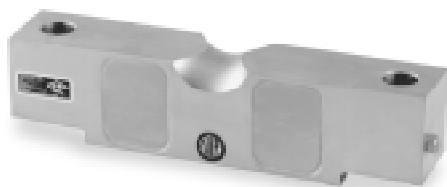
WEIGH MODULE AVAILABLE

Model	Page #
1700HE	16



4158 Double-Ended Beam, Alloy Steel

NTEP 1:10,000 Class IIIL Multiple Cell



RATED CAPACITY	A	C	D	E	F	G	H	J	K	L
lb/inches										
20,000-25,000	.68	1.69	1.94	7.75	6.50	1.38	.75	.90	1.63	1.70
40,000	.81	1.94	2.44	10.25	8.50	1.93	1.00	1.12	2.00	2.10
50,000LE-75,000	1.06	2.44	2.94	10.25	8.50	1.93	1.00	1.37	2.54	2.65
100,000-125,000	1.62	2.90	3.86	15.25	12.75	3.13	1.50	1.80	3.30	3.43
kg/millimeters										
9071.9-11,339.8	17.3	42.9	49.3	196.9	165.1	35.1	19.1	22.9	41.4	43.2
18,143.7	20.6	49.3	62.0	260.4	215.9	49.0	25.4	28.5	50.8	53.3
22,679.6LE-34,019.4	26.9	62.0	74.7	260.4	215.9	49.0	25.4	34.8	64.5	67.3
45,359.4-56,699.1	41.2	737	980	387.4	323.9	79.5	38.1	45.7	83.8	87.1

SPECIFICATIONS:

Full Scale Output:	3.0 mV/V
Bridge Resistance:	700 ohms, nominal
Material/Finish:	High-alloy steel, nickel plated
Temperature:	Compensated range 14°F to 104°F/-10°C to 40°C
Manufacturer	
Model Number:	4158-XXXX001
Safe Overload:	150% Full scale
Rated Excitation:	10V DC (25V maximum)
Nonlinearity:	0.03% Full scale

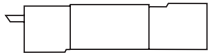
Hysteresis:	0.02% Full scale
Insulation Resistance:	5000 megohms
Seal Type:	Environmentally protected
Cable Length:	25'/7.6m
Cable Coloring:	Red + Excitation Black - Excitation Green ... + Signal White - Signal
Warranty:	2 years

4158 ORDER INFORMATION

Load Rating	Part #	Suggested List Price
NTEP 1:10,000		
20,000 lb (9071.9 kg)	47862	\$635.00
25,000 lb (11,339.8 kg)	47863	\$635.00
40,000 lb (18,143.7 kg)	47864	\$760.00
50,000 lb (22,679.6 kg)	47865	\$835.00
60,000 lb (27,215.5 kg)	47866	\$835.00
75,000 lb (34,019.4 kg)	47867	\$835.00
Non-NTEP		
10,000 lb (4536.0 kg)	47861	\$635.00

INTERCHANGEABLE PRODUCTS

Manufacturer	Model
Rice Lake Weighing Systems	(see page 137) RL75058
Sensortronics	(see page 286) 65058
Celtron	(see page 183) CLB

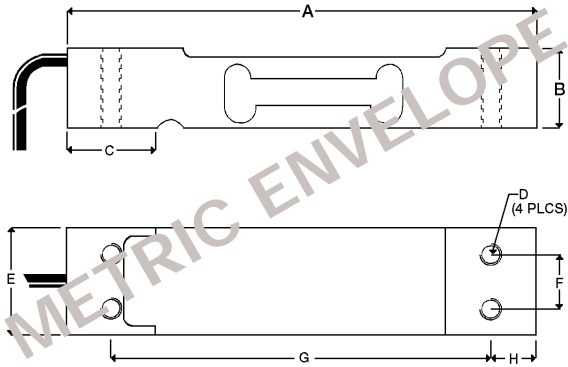


1022 Single Point, Aluminum

NTEP 1:5000 Class III Single Cell



Available upon request



RATED CAPACITY	DIMENSIONS							
	A	B	C	D	E	F	G	H
kg/millimeters								
3-7	130.0	22.0	25.0	M6 x 1.0	25.4	15.0	106.0	12.0
10-30	130.0	22.0	25.0	M6 x 1.0	30.0	15.0	106.0	12.0
35	130.0	22.0	25.0	M6 x 1.0	40.0	15.0	106.0	12.0
lb/inches								
6.6-15.4	5.12	.87	.99	M6 x 1.0	1.00	.59	4.17	.47
22.0-66.2	5.12	.87	.99	M6 x 1.0	1.18	.59	4.17	.47
77.2	5.12	.87	.99	M6 x 1.0	1.57	.59	4.17	.47

SPECIFICATIONS:

Full Scale Output: 2.0 mV/V
Bridge Resistance: 350 ohms, nominal
Material/Finish: Anodized aluminum
Temperature: Compensated temperature range
14°F to 104°F/-10°C to 40°C
Manufacturer
Model Number: 1022-XXXX001
Safe Overload: 150% Full scale
Rated Excitation: 10V DC (15V maximum)
Total Error: 0.02% Full scale

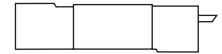
Insulation Resistance: 2000 megohms
Seal Type: Environmentally protected
Cable Length: 0.5m/1.5'
Cable Color Code: Green + Excitation
Black - Excitation
Blue + Sense
Brown - Sense
Red + Signal
White - Signal
Warranty: 2 years

1022 ORDER INFORMATION

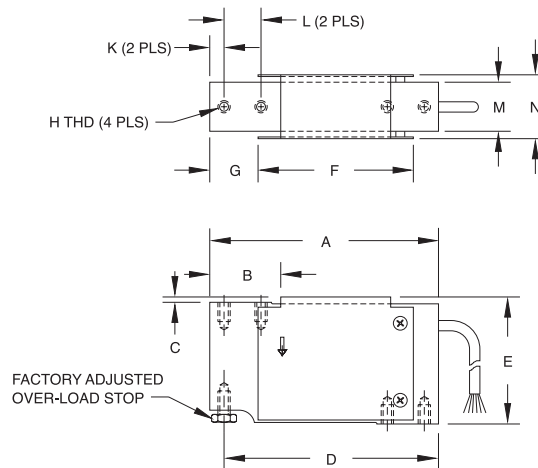
Load Rating	Part #	Suggested List Price
3 kg (6.6 lb)	41135	\$165.00
5 kg (11.0 lb)	41136	\$165.00
7 kg (15.4 lb)	41137	\$165.00
10 kg (22.0 lb)	41138	\$165.00
15 kg (33.1 lb)	41139	\$165.00
20 kg (44.1 lb)	41140	\$165.00
30 kg (66.1 lb)	41141	\$165.00
35 kg (77.2 lb)	41142	\$165.00

INTERCHANGEABLE PRODUCTS

Manufacturer	Model
Rice Lake Weighing Systems	(see page 144) RL1521A
Celtron	(see page 186) LPS
BLH	C2G1
Fairbanks	4900 Series Checkweigher
NMB	C2G1



1010 Potted & Unpotted Single Point, Aluminum NTEP 1:5000 Class III Single Cell



RATED CAPACITY	DIMENSIONS											
	A	B	C	D	E	F	G	H	K	L	M	N
kg/millimeters												
3-90	118.0	34.0	3.0	110.5	66.0	80.0	25.0	1/4-20 UNC X 13 DP	7.5	19.05	25.4	33.5
lb/inches												
6.6-198.4	4.65	1.34	.12	4.35	2.60	3.15	.98	1/4-20 UNC X 0.5 DP	.30	.75	1.00	1.32

SPECIFICATIONS:

Full Scale Output:	2.0 mV/V
Bridge Resistance:	350 ohms, nominal
Material/Finish:	Aluminum
Temperature:	Compensated range 14°F to 104°F/-10°C to 40°C
Manufacturer	
Model Number:	1010-XXXX001 (NTEP) 1010-XXXX201 (Non-NTEP)
Safe Overload:	200% at center of loading point, full scale
Rated Excitation:	10V AC/DC (20V maximum)
Total Error:	0.02% Full scale

Insulation Resistance:	5000 megohms
Deflection at Capacity:	3-90 kg ≤ .4 mm/.015"
Seal Type:	Potted & Unpotted Models
Cable Length:	Potted cells: 10'/3.1 m Unpotted cells: 10'/3.1 m
Cable Color Code:	Green + Excitation Black - Excitation Blue + Sense Brown - Sense Red + Signal White - Signal
Warranty:	2 years

1010 POTTED ORDER INFORMATION

Load Rating	Part #	Suggested List Price
Potted, NTEP 1:5000		
10 kg (22.1 lb)	33727	\$195.00
15 kg (33.1 lb)	33728	\$195.00
20 kg (44.1 lb)	33729	\$195.00
30 kg (66.1 lb)	33730	\$195.00
50 kg (110.2 lb)	33731	\$195.00

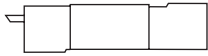
Potted, Non-NTEP		
3 kg (6.6 lb)	17481	\$195.00
5 kg (11.0 lb)	17462	\$195.00
7 kg (15.4 lb)	17463	\$195.00
10 kg (22.1 lb)	17464	\$195.00
15 kg (33.1 lb)	17465	\$195.00
20 kg (44.1 lb)	17482	\$195.00
30 kg (66.1 lb)	17475	\$195.00
50 kg (110.2 lb)	17476	\$195.00
90 kg (198.4 lb)	17471	\$195.00

1010 UNPOTTED ORDER INFORMATION

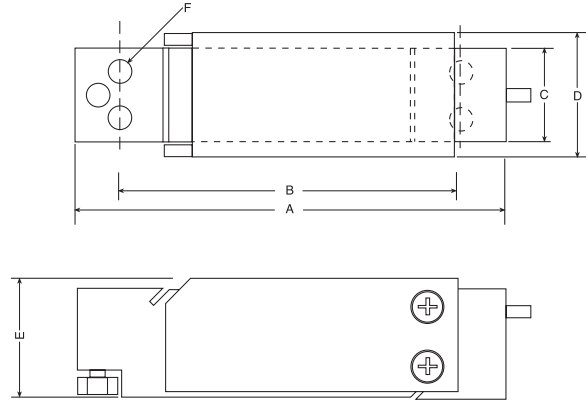
Load Rating	Part #	Suggested List Price
Unpotted, NTEP 1:5000		
5 kg (11.0 lb)	33732	\$180.00
7 kg (15.4 lb)	33733	\$180.00

INTERCHANGEABLE PRODUCTS

Manufacturer	Model
Rice Lake Weighing Systems	(see page 143) RL1010



1030 Single Point, Aluminum OIML C2.5



RATED CAPACITY	DIMENSIONS					
	A	B	C	D	E	F
kg/millimeters						
3-15	117.9	93.7	25.4	33.3	32.5	1/4-20 UNC X 10 DP
lb/inches						
6.6-33.1	4.64	3.69	1.00	1.31	1.28	1/4-20 UNC X 0.39 DP

SPECIFICATIONS:

Full Scale Output:	2.0 mV/V
Bridge Resistance:	350 ohms, nominal
Material/Finish:	Anodized aluminum
Temperature:	Compensated range 14°F to 104°F/-10°C to 40°C
Manufacturer	
Model Number:	1030-XXXX101
Safe Overload:	150% Full scale
Rated Excitation:	10V DC/AC (20V maximum)
Total Error:	0.02%

Insulation Resistance:	5000 megohms
Deflection at Capacity:	3-15 kg = .015"/.4mm
Seal Type:	Environmentally protected
Cable Length:	1m/3.3'
Cable Color Code:	Green + Excitation Black - Excitation Blue + Sense Brown - Sense Red + Signal White - Signal
Warranty:	1 year

1030 ORDER INFORMATION

Load Rating	Part #	Suggested List Price
3 kg (6.6 lb)	47882	\$265.00
5 kg (11.0 lb)	47883	\$265.00
7 kg (15.4 lb)	47884	\$265.00
10 kg (22.1 lb)	47885	\$265.00
15 kg (33.1 lb)	47886	\$265.00

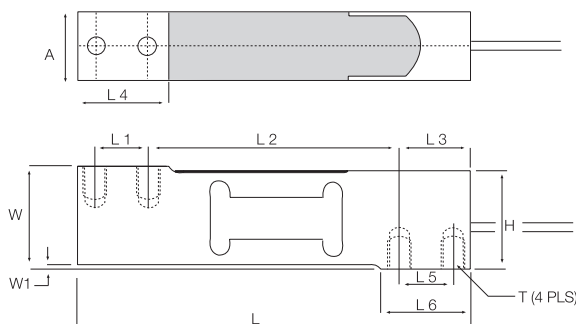


1042 Single Point, Aluminum

NTEP 1:5000 Class III Single Cell



Available upon request



RATED CAPACITY	DIMENSIONS											T
	A	H	L	L1	L2	L3	L4	L5	L6	W	W1	
kg/millimeters												
1-30	20.0	37.9	150.0	19.0	100.0	25.0	34.0	19.0	34.0	40.0	1.0	1/4-20 UNF
50-100	25.2	37.9	150.0	19.0	100.0	25.0	34.0	19.0	34.0	40.0	1.0	1/4-20 UNF
lb/inches												
2.2-66.1	.787	1.496	5.91	.75	3.937	.984	1.339	.75	1.339	1.575	.040	1/4-20 UNF
110.2-220.5	.992	1.496	5.91	.75	3.937	.984	1.339	.75	1.339	1.575	.040	1/4-20 UNF

SPECIFICATIONS:

Full Scale Output: 2.0 mV/V
 Bridge Resistance: 350 ohms, nominal
 Material/Finish: Aluminum
 Temperature: Compensated temperature range
 14°F to 104°F/-10°C to 40°C
 Manufacturer Model Number: 1042-XXXX001
 Safe Overload: 150% Full scale
 Rated Excitation: 10V DC (15V maximum)
 Total Error: 0.02% Full scale

Deflection at Capacity: 1-100kg ≤ .4mm/.015"
 Insulation Resistance: 5000 megohms
 Seal Type: Environmentally protected
 Cable Length: 3.1m/10'
 Cable Color Code: Green + Excitation
 Black - Excitation
 Blue + Sense
 Brown - Sense
 Red + Signal
 White - Signal
 Warranty: 2 years

1042 ORDER INFORMATION

Load Rating	Part #	Suggested List Price
1 kg (2.2 lb)	40680	\$180.00
3 kg (6.6 lb)	40681	\$180.00
5 kg (11.0 lb)	40682	\$180.00
10 kg (22.0 lb)	40683	\$180.00
15 kg (33.1 lb)	40684	\$180.00
20 kg (44.1 lb)	40685	\$180.00
30 kg (66.1 lb)	40686	\$180.00
50 kg (110.2 lb)	40687	\$180.00
75 kg (165.4 lb)	40688	\$180.00
100 kg (220.5 lb)	40689	\$180.00

INTERCHANGEABLE PRODUCTS

Manufacturer	Model
Rice Lake Weighing Systems	(see page 148) RL1042
Revere	(see page 260) 642
HBM	(see page 224) SP4

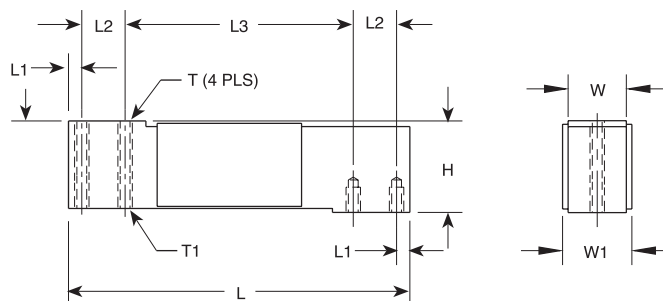


1040 Potted & Unpotted Single Point, Aluminum

NTEP 1:5000 Class III Single Cell



Available upon request



RATED CAPACITY	H	L	L1	L2	L3	DIMENSIONS T	T1	W	W1
kg/millimeters									
5-100	40.0	150.0	5.95	19.05	100.0	1/4-20 UNC X 10 DP	1/4-28 UNF X 10 DP	25.4	29.4
lb/inches									
11.0-220.5	1.57	5.91	.23	.75	3.94	1/4-20 UNC X 0.39 DP	1/4-28 UNF X 0.39 DP	1.00	1.16

SPECIFICATIONS:

Full Scale Output:	2.0 mV/V
Bridge Resistance:	350 ohms, nominal
Material/Finish:	Anodized aluminum
Temperature:	Compensated range 14°F to 104°F/-10°C to 40°C
Manufacturer Model Number:	1040-XXXX001 (NTEP) 1040-XXXX201 (Non-NTEP)
Safe Overload:	200% at center loading point, full scale
Rated Excitation:	10V AC/DC (15V maximum)
Total Error:	0.02% Full scale

Insulation Resistance:	5000 megohms
Deflection at Capacity:	5-100 kg ≤ .4mm/.015"
Seal Type:	Potted & Unpotted Models
Cable Length:	Potted cells: 10'/3.1m Unpotted cells: 10'/3.1m
Cable Color Code:	Green + Excitation Black - Excitation Blue + Sense Brown ... - Sense Red + Signal White - Signal
Warranty:	2 years

1040 POTTED ORDER INFORMATION

Load Rating	Part #	Suggested List Price
Potted, NTEP 1:5000		
10 kg (22.1 lb)	33719	\$195.00
15 kg (33.1 lb)	33720	\$195.00
20 kg (44.1 lb)	33721	\$195.00
30 kg (66.1 lb)	33722	\$195.00
50 kg (110.2 lb)	33723	\$195.00
100 kg (220.5 lb)	33724	\$195.00

Potted, Non-NTEP		
5 kg (11.0 lb)	17449	\$190.00
7 kg (15.4 lb)	17483	\$190.00

1040 UNPOTTED ORDER INFORMATION

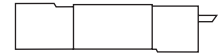
Load Rating	Part #	Suggested List Price
Unpotted, NTEP 1:5000		
5 kg (11.0 lb)	33725	\$205.00
7 kg (15.4 lb)	33726	\$205.00

INTERCHANGEABLE PRODUCTS

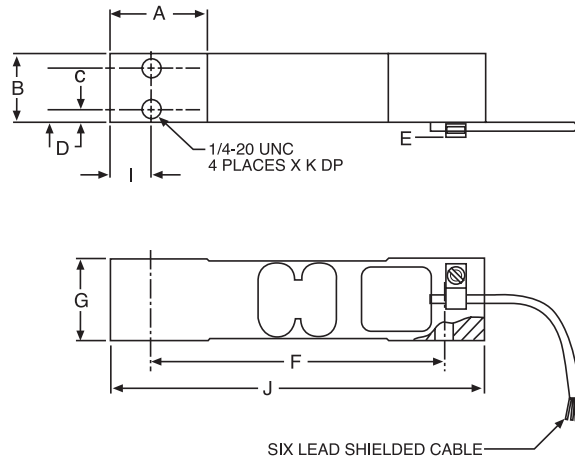
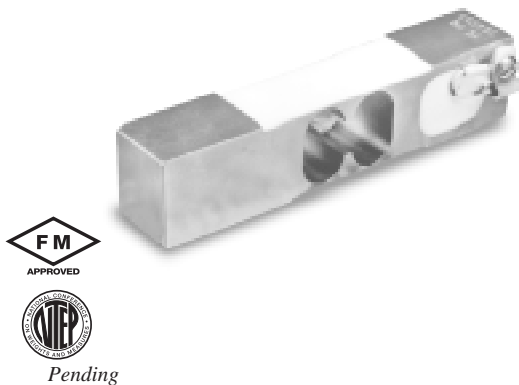
Manufacturer	Model
Rice Lake Weighing Systems	(see page 149) RL1040
Celtron	(see page 187) LOC
Revere Transducers	(see page 260) 642
HBM	(see page 224) SP4

Matched-output cells are available; consult factory.

USA: 800-472-6703 • Canada/Mexico: 800-321-6703 • International: 715-234-9171



1130 Single Point, Stainless Steel



RATED CAPACITY	DIMENSIONS									
	A	B	C	D	E	F	G	I	J	H
kg/millimeters										
7.5-100	35.0	25.0	15.0	5.0	6.5	10.6	30	14.5	135	10
lb/inches										
16.6-220.5	1.378	.98	.591	.19	.26	4.173	1.18	.571	5.31	.39

SPECIFICATIONS:

Full Scale Output: 2.0 mV/V
Bridge Resistance: 350 ohms, nominal
Material/Finish: Stainless Steel
Temperature: Compensated range
14°F to 104°F/-10°C to 40°C
Safe Overload: 200% full scale, at center loading point
Rated Excitation: 10V AC/DC (15V maximum)
Total Error: 0.02% Full scale
Insulation Resistance: 5000 megohms
Deflection at Capacity: 7.5-100 kg ≤ .4mm/.015"

Seal Type: Environmentally protected
Cable Length: 3.3'/1m
3.3'/1m
Cable Color Code: Green + Excitation
Black - Excitation
Blue + Sense
Brown ... - Sense
Red + Signal
White - Signal
Warranty: 2 years

1130 ORDER INFORMATION

Load Rating	Part #	Suggested List Price
7.5 kg (16.6 lb)	53485	\$255.00
15 kg (33.1 lb)	53486	\$255.00
30 kg (66.1 lb)	53487	\$255.00
50 kg (110.2 lb)	53488	\$255.00
100 kg (220.0 lb)	53490	\$255.00

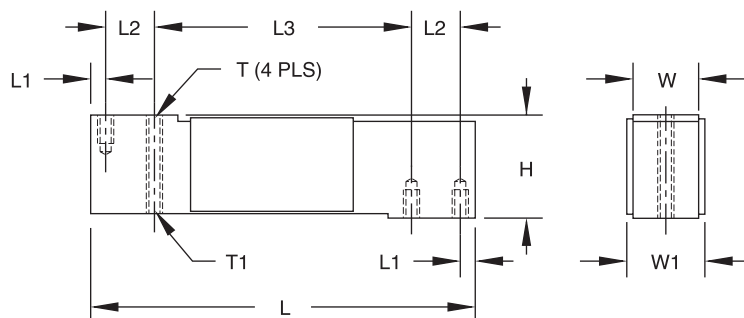
Matched-output cells are available; consult factory.

USA: 800-472-6703 • Canada/Mexico: 800-321-6703 • International: 715-234-9171

Prices & Specifications subject to change without notice



1140 Potted Single Point, Stainless Steel



RATED CAPACITY	DIMENSIONS								
	H	L	L1	L2	L3	T	T1	W	W1
kg/millimeters									
15-150	40.0	150.0	5.95	19.1	100.0	1/4-20 UNC X 10 DP	1/4-28 UNF X 10 DP	25.4	29.4
lb/inches									
33.1-330.7	1.57	5.91	.23	.75	3.94	1/4-20 UNC X 0.39 DP	1/4-28 UNF X 0.39 DP	1.00	1.16

SPECIFICATIONS:

Full Scale Output:	2.0 mV/V
Bridge Resistance:	350 ohms, nominal
Material/Finish:	Stainless steel
Temperature:	Compensated range 14°F to 104°F/-10°C to 40°C
Manufacturer	
Model Number:	1140-XXXX201
Safe Overload:	200% at center loading point, full scale
Rated Excitation:	10V AC/DC (15V maximum)
Total Error:	0.02% Full scale

Insulation Resistance:	5000 megohms
Deflection at Capacity:	15-150 kg ≤ .4mm/.015"
Seal Type:	Environmentally protected
Cable Length:	10'/3.1m
Cable Color Code:	Green + Excitation Black - Excitation Blue + Sense Brown ... - Sense Red + Signal White - Signal
Warranty:	2 years

1140 ORDER INFORMATION

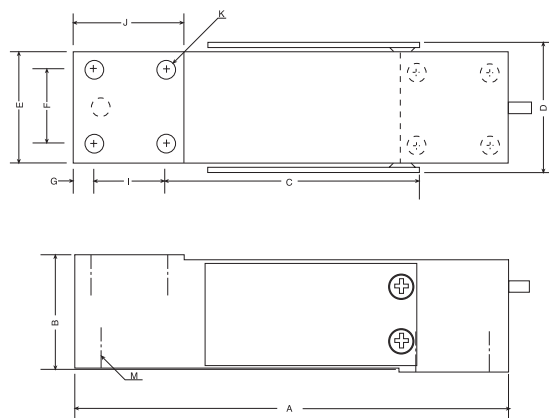
Load Rating	Part #	Suggested List Price
Potted cells:		
15 kg (33.1 lb)	17451	\$320.00
30 kg (66.1 lb)	17452	\$320.00
50 kg (110.2 lb)	17468	\$320.00
75 kg (165.4 lb)	17485	\$320.00
100 kg (220.5 lb)	17453	\$320.00
150 kg (330.7 lb)	36466	\$320.00

INTERCHANGEABLE PRODUCTS

Manufacturer	Model
Rice Lake Weighing Systems	(see page 150) RL1140
Flintec	(see page 206) PC1



1240 Single Point, Stainless Steel



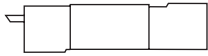
RATED CAPACITY	DIMENSIONS										
	A	B	C	D	E	F	G	I	J	K	M
kg/millimeters											
200-250	150.1	39.9	86.6	43.4	38.1	25.4	6.35	25.4	38.1	1/4-20 UNC x 13 DP	1/4-28 UNF x 10 DP
lb/inches											
441-551.3	5.91	1.57	3.41	1.71	1.50	1.00	.25	1.00	1.50	1/4-20 UNC x 0.51 DP	1/4-28 UNF x 0.39 DP

SPECIFICATIONS:

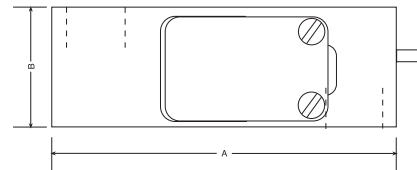
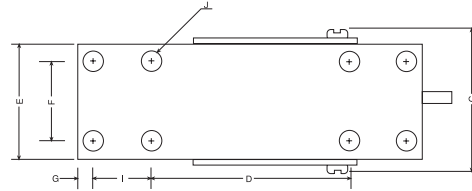
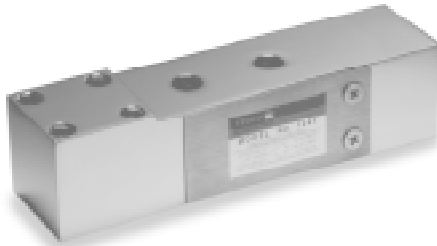
Full Scale Output:	2.0 mV/V	Insulation Resistance:	2000 ohms
Bridge Resistance:	350 ohms	Deflection at Capacity:	200-250 kg = .015"/.4mm
Material/Finish:	Stainless steel	Seal Type:	Environmentally sealed
Temperature:	Compensated temperature range 14°F to 104°F/-10°C to 40°C	Cable Length:	10'
Manufacturer		Cable Color Code:	Green + Excitation Black - Excitation Blue + Sense Brown - Sense Red + Signal White - Signal
Model Number:	1240-XXX101	Warranty:	1 year
Safe Overload:	150% Full scale		
Rated Excitation:	10V AC/DC (15V maximum)		
Total Error:	0.02%		

1240 ORDER INFORMATION

Load Rating	Part #	Suggested List Price
200 kg (441 lb)	47880	\$350.00
250 kg (551.3 lb)	47881	\$350.00



1241 Single Point, Aluminum OIML C3



RATED CAPACITY	DIMENSIONS								
	A	B	C	D	E	F	G	I	J
kg/millimeters									
100-250	150.1	38.1	43.4	86.6	38.1	25.4	6.4	25.4	1/4-20 UNC x 13 DP
lb/inches									
220.5-551.3	5.91	1.50	1.71	3.41	1.50	1.00	.25	1.00	1/4-20 UNC x 0.51 DP

SPECIFICATIONS:

Full Scale Output:	2.0 mV/V	Insulation Resistance:	2000 megohms
Bridge Resistance:	350 ohms	Deflection at Capacity:	100-250 kg = .015"/.4mm
Material/Finish:	Aluminum	Seal Type:	Environmentally sealed
Temperature:	Compensated range 14°F to 104°F/-10°C to 40°C	Cable Length:	1m/3.3'
Manufacturer		Cable Color Code:	Green + Excitation Black - Excitation Blue + Sense Brown - Sense Red + Signal White - Signal
Model Number:	1241-XXX101	Warranty:	1 year
Safe Overload:	150%, Full scale		
Rated Excitation:	10V AC/DC (15V maximum)		
Total Error:	0.005%		

1241 ORDER INFORMATION

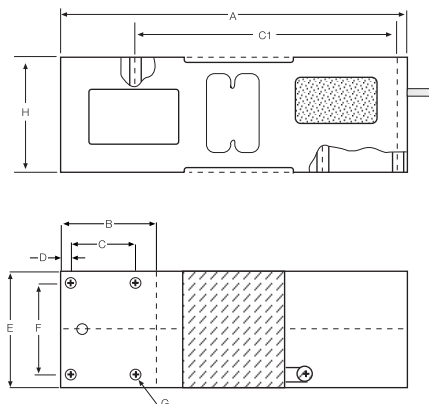
Load Rating	Part #	Suggested List Price
100 kg (220.5 lb)	47876	\$305.00
150 kg (330.7 lb)	47877	\$305.00
200 kg (441.0 lb)	47878	\$305.00
250 kg (551.3 lb)	47879	\$305.00



1260 Single Point, Aluminum NTEP 1:5000 Class III Single Cell



Available upon request



RATED CAPACITY	DIMENSIONS								H
	A	B	C	C1	D	E	F	G	
kg/millimeters									
50-635	188	52	35	142	5.5	62.3	50	5/16-18 UNC-2B	62.3
lb/inches									
110.2-1399.9	7.40	2.05	1.38	5.59	.22	2.45	1.97	5/16-18 UNC-2B	2.45

SPECIFICATIONS:

Full Scale Output:	2.0 mV/V
Bridge Resistance:	350 ohms, nominal
Material/Finish:	Anodized aluminum
Temperature:	Compensated temperature range 14°F to 110°F/-10°C to 40°C
Manufacturer	
Model Number:	1260-XXXX001
Safe Overload:	200% of full scale at center loading point
Rated Excitation:	10V DC (20V maximum)
Total Error:	0.02% Full scale

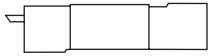
Insulation Resistance:	5000 megohms
Seal Type:	Environmentally protected
Cable Length:	10'/3m
Cable Color Code:	Green + Excitation Black - Excitation Blue + Sense Brown - Sense Red + Signal White - Signal
Warranty:	2 years

1260 ORDER INFORMATION

Load Rating	Part #	Suggested List Price
50 kg (110.2 lb)	40769	\$310.00
75 kg (165.4 lb)	40770	\$310.00
100 kg (220.5 lb)	40771	\$310.00
200 kg (440.9 lb)	40772	\$310.00
250 kg (551.2 lb)	40773	\$310.00
300 kg (661.4 lb)	40774	\$310.00
500 kg (1102.3 lb)	40775	\$310.00
635 kg (1399.9 lb)	40776	\$310.00

INTERCHANGEABLE PRODUCTS

Manufacturer	Model
Rice Lake Weighing Systems	(see page 153) RL1260

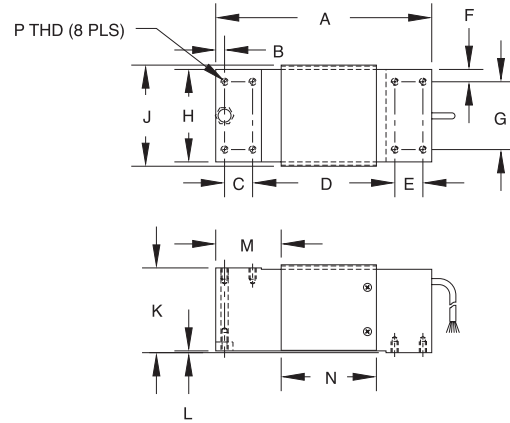


1250 Potted Single Point, Aluminum

NTEP 1:5000 Class III Single Cell



Available upon request



RATED CAPACITY	DIMENSIONS													
	A	B	C	D	E	F	G	H	J	K	L	M	N	P
kg/millimeters														
100-1000	191.0	11.0	25.0	125.0	25.0	7.5	60.0	75.0	82.0	75.0	1.5	57.5	85.0	5/16-18UNC X 15 DP
lb/inches														
220.5-2205	7.52	.43	.98	4.92	.98	.30	2.36	2.95	3.23	2.95	.06	2.26	3.35	5/16-18UNC X .59 DP

SPECIFICATIONS:

Full Scale Output:	2.0 mV/V
Bridge Resistance:	350 ohms, nominal
Material/Finish:	Anodized aluminum
Temperature:	Compensated range 14°F to 104°F/-10°C to 40°C
Manufacturer	
Model Number:	1250-XXXX001 (NTEP) 1250-XXXX201 (Non-NTEP)
Safe Overload:	200% of full scale at center loading point
Rated Excitation:	10V AC/DC (20V maximum)
Total Error:	0.02% Full scale

Insulation Resistance:	5000 megohms
Deflection at Capacity:	50-1000 kg ≤ .4mm/.015"
Seal Type:	Environmentally protected
Cable Length:	10'/3.1m
Cable Color Code:	Green + Excitation Black - Excitation Blue + Sense Brown - Sense Red + Signal White - Signal
Warranty:	2 years

1250 POTTED ORDER INFORMATION

Load Rating	Part #	Suggested List Price
Potted, NTEP 1:5000		
100 kg (220.5 lb)	33711	\$315.00
150 kg (330.7 lb)	33712	\$315.00
200 kg (440.9 lb)	33713	\$315.00
250 kg (551.2 lb)	33714	\$315.00
300 kg (661.4 lb)	33715	\$315.00
500 kg (1102.3 lb)	33716	\$315.00
635 kg (1399.9 lb)	33717	\$315.00
Non-NTEP 1:5000		
50 kg (110.3 lb)	17478	\$315.00
75 kg (165.4 lb)	17469	\$315.00
1000 kg (2205 lb)	17480	\$315.00

INTERCHANGEABLE PRODUCTS

Manufacturer	Model
Rice Lake Weighing Systems	(see page 154) RL1250
Celtron	(see page 188) LOC
Revere Transducers	(see page 261) 652
Flintec	(see page 205) PCB

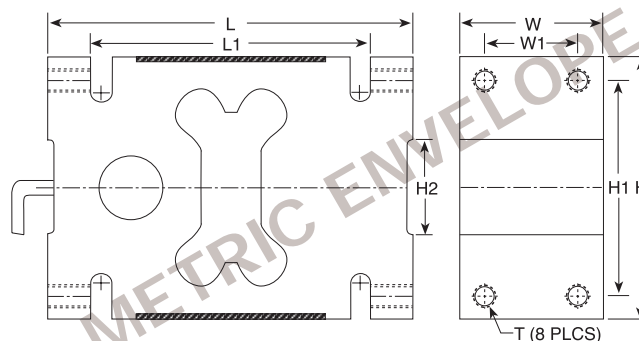


1320 Single Point, Aluminum

NTEP 1:3000, Class III Single Cell



Available upon request



RATED CAPACITY	DIMENSIONS							
	H	H1	H2	L	L1	T	W	W1
kg/millimeters								
1000-2000	126.0	95.0	45.0	176.0	135.0	M16X2-6H	76.0	46.0
lb/inches								
2204.6-4409.2	4.96	3.74	1.77	6.93	5.31	M16X2-6H	2.99	1.81

SPECIFICATIONS:

Full Scale Output:	2.0 mV/V
Bridge Resistance:	350 ohms, nominal
Material/Finish:	Aluminum alloy
Temperature:	Compensated range 14°F to 104°F/-10°C to 40°C
Manufacturer	
Model Number:	1320-XXXX101
Safe Overload:	150% Full scale
Rated Excitation:	10V DC/AC (15V maximum)
Total Error:	0.02% Full scale
Insulation Resistance:	2000 megohms

Deflection at Capacity:	1000-2000 kg ≤ .4mm/.015"
Max. Platform Size:	4' x 4'/1.2m x 1.2m
Seal Type:	Environmentally protected
Cable Length:	6m/19.7'
Cable Color Code:	Green + Excitation Black - Excitation Blue + Sense Brown - Sense Red + Signal White - Signal
Warranty:	2 years

1320 ORDER INFORMATION

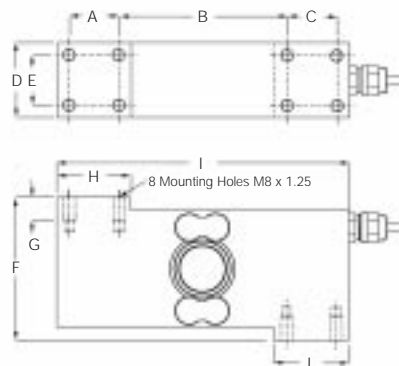
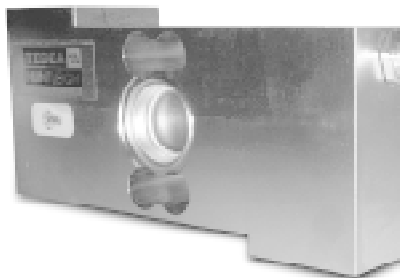
Load Rating	Part #	Suggested List Price
1000 kg (2204.6 lb)	29908	\$450.00
1500 kg (3306.9 lb)	29909	\$450.00
2000 kg (4409.2 lb)	29910	\$450.00

INTERCHANGEABLE PRODUCTS

Manufacturer	Model
Celtron	(see page 188) HOC



1510 Single Point Stainless Steel, IP68 Hermetically Sealed



RATED CAPACITY	DIMENSIONS									
	A	B	C	D	E	F	G	H	I	J
lb/inches 100-500 lb	56.0	190.7	56.0	84.0	56.0	161.0	26.5	84	330.7	84
kg/millimeters 100-500 kg	25.4	86.5	25.4	38.1	25.4	73	12	38.1	150.00	38.1

SPECIFICATIONS:

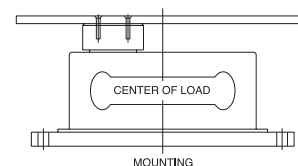
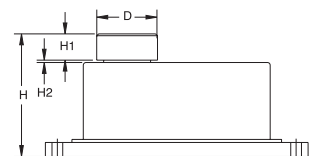
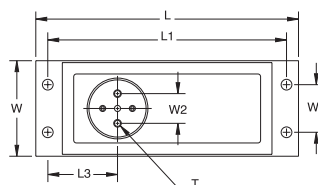
Full Scale Output:	2.0 mV/V	Cable Length:	1m
Bridge Resistance:	350 ohms, nominal	Cable Color Code:	Green + Input Black - Input Blue + Sense Brown - Sense Red + Output White - Output
Material/Finish:	Stainless steel	Warranty:	2 years
Temperature:	Compensated temperature range -14°F to 104°F/-10°C to 40°C		
Safe Overload:	150% at center loading point, full scale		
Rated Excitation:	10V DC (15V maximum)		
Total Error:	0.020% Full scale		
Insulation Resistance:	1000 megohms		
Seal Type:	Hermetically sealed, IP68		

1510 ORDER INFORMATION

Load Rating	Part #	Suggested List Price
Stainless Steel*		
100 kg (220.5 lb)	65851	\$795.00
250 kg (551.2 lb)	65852	\$795.00
500 kg (1102.3 lb)	65853	\$795.00



240 Single-Point Fluid Damped Alloy Steel/Stainless Steel Casing NTEP 1:5000 Class III Single Cell



Available upon request

RATED CAPACITY	D	H	H1	H2	L	L1	L3	T	W	W1	W2
kg/millimeters											
2-50	50 DIA.	115.0	21.0	2.0	220.0	200.0	58.5	1/4-20 UNC X 10 DP	80.0	40.0	25.0
lb/inches											
4.4-110.2	1.97 DIA.	4.53	.83	.08	8.66	7.87	2.30	1/4-20 UNC X 0.39 DP	3.15	1.57	.98

SPECIFICATIONS:

Full Scale Output:	2.0 mV/V	Total Error:	0.025% Full scale
Bridge Resistance:	350 ohms, nominal	Insulation Resistance:	5000 megohms
Material/Finish:	Anodized aluminum load cell in alloy steel or stainless steel enclosure	Seal Type:	Environmentally protected
Temperature:	Operating temperature range 32°F to 122°F/0°C to 50°C	Cable Length:	3m/10'
Manufacturer		Cable Color Code:	Green + Excitation Black - Excitation Blue + Sense Brown - Sense Red + Signal White - Signal
Model Number:	0240-XXXX-922 (Alloy) 0240-XXXX-923 (Stainless Steel)	Warranty:	2 years
Safe Overload:	150% at center loading point, full scale		
Rated Excitation:	10V DC (15V maximum)		

240 ORDER INFORMATION

Load Rating	Part #	Suggested List Price
Alloy Steel*		
*2 kg (4.4 lb)	17559	\$670.00
5 kg (11.0 lb)	17560	\$670.00
7 kg (15.4 lb)	17561	\$670.00
10 kg (22.0 lb)	17562	\$670.00
15 kg (33.1 lb)	17563	\$670.00
20 kg (44.1 lb)	17564	\$670.00
30 kg (66.1 lb)	17565	\$670.00
50 kg (110.2 lb)	17566	\$670.00
Stainless Steel*		
*2 kg (4.4 lb)	17567	\$795.00
5 kg (11.0 lb)	17568	\$795.00
7 kg (15.4 lb)	17569	\$795.00
10 kg (22.0 lb)	17570	\$795.00
15 kg (33.1 lb)	17571	\$795.00
20 kg (44.1 lb)	17572	\$795.00
30 kg (66.1 lb)	17573	\$795.00
50 kg (110.2 lb)	17574	\$795.00

* Non-NTEP models available; consult factory.

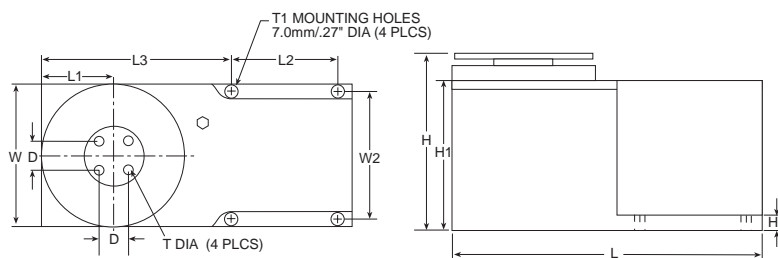
NOTE: The special fluid damped operation is particularly well suited for applications where quick weighment is required, e.g., checkweighers.

USA: 800-472-6703 • Canada/Mexico: 800-321-6703 • International: 715-234-9171

Prices & Specifications subject to change without notice



9010 Single-Point Fluid Damped Load Cell



RATED CAPACITY	DIMENSIONS										
	D	H	H1	H3	L	L1	L2	L3	T	W	W2
kg/millimeters											
3-50	19.05	115.2	97.3	10.0	199.5	46.0	71.5	119.8	1/4-20 UNC X 20DP	92.0	82.0
lb/inches											
6.6-110.2	.75	4.53	3.83	.39	7.85	1.81	2.81	4.72	1/4-20 UNC x .79DP	3.62	3.23

SPECIFICATIONS:

Full Scale Output:	2.0 mV/V	Seal Type:	Environmentally protected
Bridge Resistance:	350 ohms, nominal	Cable Length:	3'/.9m
Material/Finish:	Anodized load cell in nickel plated housing	Cable Color Code:	Green + Excitation Black - Excitation Blue + Sense Brown - Sense Red + Signal White - Signal
Temperature:	Operating temperature range 10°C to 30°C/50°F to 86°F	Warranty:	2 years
Safe Overload:	800% Full scale downward, 400% Full scale upward		
Rated Excitation:	15V AC/DC (20V maximum)		
Total Error:	0.03% Full scale		
Insulation Resistance:	5000 megohms		

9010 ORDER INFORMATION

Load Rating	Part #	Suggested List Price
3 kg (6.6 lb)	consult factory	consult factory
5 kg (11.0 lb)	consult factory	consult factory
7 kg (15.4 lb)	consult factory	consult factory
10 kg (22.0 lb)	consult factory	consult factory
15 kg (33.1 lb)	consult factory	consult factory
20 kg (44.1 lb)	consult factory	consult factory
30 kg (66.1 lb)	consult factory	consult factory
50 kg (110.2 lb)	consult factory	consult factory

9010 load cells are custom-manufactured per specific application requirements. Use the Application Definition form on page 327 to define your applications.

NOTE: The special fluid damped operation is particularly well suited for applications where quick weighment is required, e.g., checkweighers.

Tedea-Huntleigh Model 9010 Application Definition Form

Customer's Name: _____ Number of Units: _____

Contact Person: _____ Date: _____

Application: _____

Tare Weight (Dead Load), kg: _____

Useful Weight (Live Load), kg: _____

If Checkweigher:

Size of conveyor platform (cm x cm): Length (Movement Direction) _____ Width _____

Size of weighed product in movement direction (cm): _____

Speed of belt (cm/sec): _____

Tare Weight Distribution: Conveyor (kg) _____

Motor (kg) _____

Position of motor (see sketch, cm): D _____ F _____

If not checkweigher (see sketch):

Estimate tare C. G. Position (cm): D _____ F _____

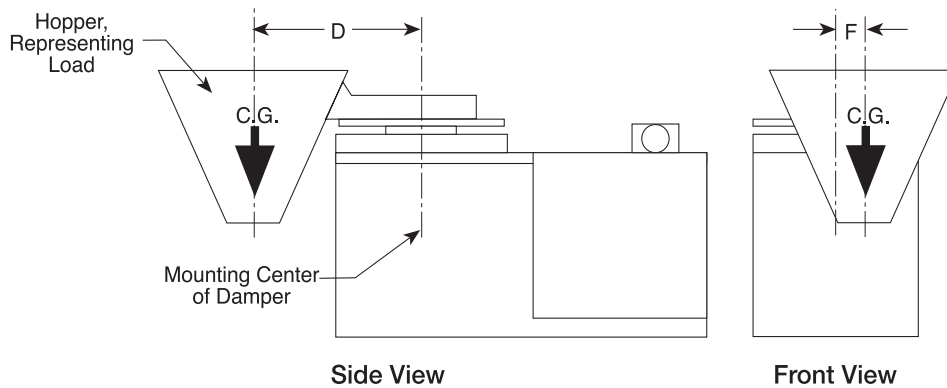
Loading position (cm): D _____ F _____ Drop Height (cm) _____

If C. G. of load varies, max. distance between extreme position (cm): _____

Describe live load (powder, fruit, screws, etc.): _____

Settling time (milliseconds): _____

Accuracy required: _____ Operating temperature range (°C): _____



Return completed form to your Sales Representative.

For Factory use; do not write in space below.

Serial Numbers: _____ Sales Order #: _____

Delivery Quoted: _____ Date: _____