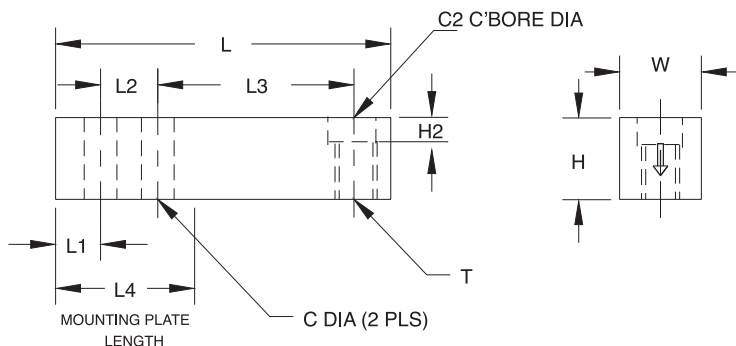




**Revere
Transducers**

9523 Single-Ended Beam, Stainless Steel Welded Seal, IP67



RATED CAPACITY	DIMENSIONS										
	C	C2	H	H2	L	L1	L2	L3	L4	T	W
lb/inches											
1000-4000	.53	.81	1.25	.56	6.12	1.62	1.00	3.00	3.38	1/2-20 UNF	1.25
5000-10,000	.78	1.19	1.50	.59	7.71	1.71	1.50	3.75	4.08	3/4-16 UNF	1.50
kg/millimeters											
453.6-1814.4	13.5	20.6	31.8	14.2	155.5	41.2	25.4	76.2	85.9	1/2-20 UNF	31.8
2268.0-4535.9	19.8	30.2	38.1	15.0	195.8	43.4	38.1	95.3	103.6	3/4-16 UNF	38.1

SPECIFICATIONS:

Full Scale Output:	3.0 mV/V
Bridge Resistance:	350 ohms, nominal
Material/Finish:	Stainless steel
Temperature:	Compensated range 0°F to 150°F/-18°C to 65°C
Manufacturer	
Model Number:	9523-D3-XX-20P1
Safe Overload:	150% Full scale
Rated Excitation:	10V AC/DC (15V maximum)
Non-repeatability:	0.01% Full scale (9523-D3)
Combined Error:	0.03% Full scale (9523-D3)

Insulation Resistance:	5000 megohms
Deflection at Capacity:	1000 lb = .016"/.4mm, 2500 lb = .03"/.8mm, 4000 lb = .041"/1.0mm, 5000 lb = .035"/.9mm, 10,000 lb = .042"/1.1mm
Seal Type:	Welded seal*, IP67
Cable Length:	20'/6.1m
Cable Color Code:	Red + Excitation Black - Excitation Green + Signal White - Signal
Warranty:	3 years

9523 ORDER INFORMATION

Load Rating	Part #	Suggested List Price
9523-D3 1:3000		
1000 lb (453.6 kg)	17221	\$475.00
2500 lb (1134.0 kg)	17222	\$475.00
4000 lb (1814.4 kg)	17223	\$475.00
5000 lb (2268.0 kg)	17224	\$525.00
10,000 lb (4535.9 kg)	17225	\$550.00

INTERCHANGEABLE PRODUCTS

Manufacturer	Model
Rice Lake Weighing Systems	(see page 112) RL39523 (has non-counterbored load hole)

*NOTE: Conduit is recommended for maximum protection against ingress of water and moisture through the cable entry.

USA: 800-472-6703 • Canada/Mexico: 800-321-6703 • International: 715-234-9171