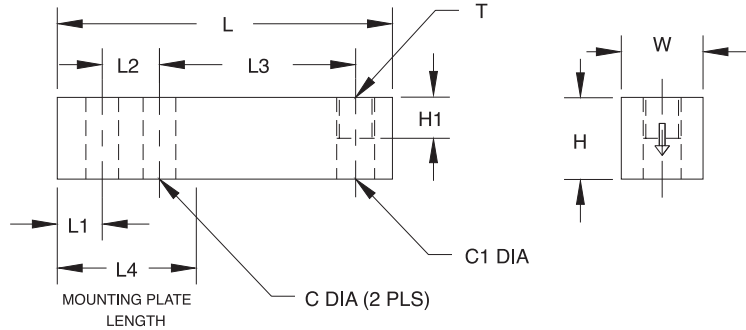




# 9123 Single-Ended Beam, Stainless Steel, IP67



RATED CAPACITY	DIMENSIONS										
	C	C1	H	H1	L	L1	L2	L3	L4	T	W
<b>lb/inches</b>											
1000-4000	.53	.53	1.25	.62	5.12	.62	1.00	3.00	2.25	1/2-20 UNF-2B	1.25
5000-10,000	.78	.78	1.50	.75	6.75	.75	1.50	3.75	3.00	3/4-16 UNF-2B	1.50
<b>kg/millimeters</b>											
453.6-1814.4	13.5	13.5	31.8	15.8	130.1	15.8	25.4	76.2	57.2	1/2-20 UNF-2B	31.8
2268.0-4535.9	19.8	19.8	38.1	19.1	171.5	19.1	38.1	95.3	76.2	3/4-16 UNF-2B	38.1

## SPECIFICATIONS:

Full Scale Output:	3.0 mV/V	Insulation Resistance:	5000 megohms
Bridge Resistance:	350 ohms, nominal	Deflection at Capacity:	1000 lb = .016"/.4mm, 2500 lb = .03"/.8mm, 4000 lb = .04"/1.0mm, 5000 lb = .035"/.9mm, 10,000 lb = .042"/1.1mm
Material/Finish:	Stainless steel	Seal Type:	Environmentally protected, IP67
Temperature:	Compensated range 0°F to 150°F/-18°C to 65°C	Cable Length:	20'/6.1m
Manufacturer		Cable Color Code:	Red ..... + Excitation Black ..... - Excitation Green .... + Signal White .... - Signal Orange... Shield
Model Number:	9123-D3-XX-20P1	Warranty:	3 years
Safe Overload:	150% Full scale		
Rated Excitation:	10V AC/DC (15V maximum)		
Combined Error:	0.03% Full scale (9123-D3)		
Non-repeatability:	0.01% Full scale (9123-D3)		

## 9123 ORDER INFORMATION

Load Rating	Part #	Suggested List Price
<b>9123-D3 1:3000</b>		
1000 lb (453.6 kg)	17231	\$295.00
2500 lb (1134.0 kg)	17232	\$325.00
4000 lb (1814.4 kg)	17233	\$325.00
5000 lb (2268.0 kg)	17234	\$450.00
10,000 lb (4535.9 kg)	17235	\$450.00

## INTERCHANGEABLE PRODUCTS

Manufacturer	Model
Rice Lake Weighing Systems	(see page 104) RL39123
HBM	(see page 216) B35

## WEIGH MODULE AVAILABLE

Model	Page #
RL1800 Series	40
RL50210TA	30