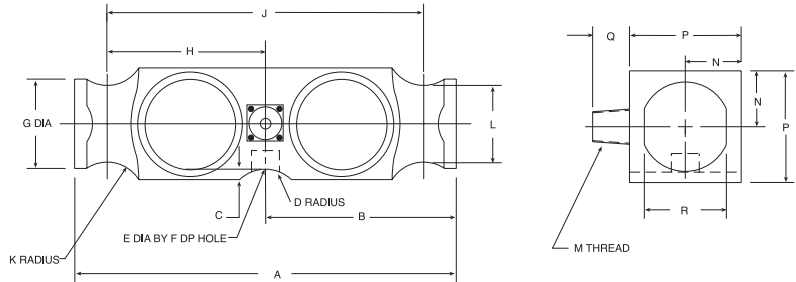


**Revere
Transducers**

5223 Link Beam, Alloy Steel

Welded Seal, IP67, NTEP 1:10,000 Class III L Multiple Cell



| RATED CAPACITY | DIMENSIONS | | | | | | | | | | | | | | | |
|-----------------------|------------|-------|-----|------|------|------|------|-------|-------|------|------|------------|------|------|------|------|
| | A | B | C | D | E | F | G | H | J | K | L | M | N | P | Q | R |
| lb/inches | | | | | | | | | | | | | | | | |
| 50,000-65,000 | 10.25 | 5.12 | .28 | 1.00 | .75 | .78 | 2.40 | 4.25 | 8.50 | 1.00 | 2.06 | 1/2-14 NPT | 1.50 | 3.00 | 1.03 | 2.20 |
| 100,000 | 10.25 | 5.12 | .28 | 1.00 | — | — | 2.40 | 4.25 | 8.50 | 1.00 | 2.06 | 1/2-14 NPT | 1.50 | 3.00 | 1.03 | 2.20 |
| kg/millimeters | | | | | | | | | | | | | | | | |
| 22,679.6-29,483.5 | 260.4 | 130.1 | 7.1 | 25.4 | 19.1 | 19.8 | 61.0 | 108.0 | 215.9 | 25.4 | 52.3 | 1/2-14 NPT | 38.1 | 76.2 | 26.2 | 55.9 |
| 45,359.2 | 260.4 | 130.1 | 7.1 | 25.4 | — | — | 61.0 | 108.0 | 215.9 | 25.4 | 52.3 | 1/2-14 NPT | 38.1 | 76.2 | 26.2 | 55.9 |

SPECIFICATIONS:

| | | | |
|--------------------|---|-------------------------|---|
| Full Scale Output: | 3.0 mV/V | Combined Error: | 0.025% Full scale |
| Bridge Resistance: | 700 ohms, nominal | Insulation Resistance: | 5000 megohms |
| Material/Finish: | High-alloy steel, nickel plated | Deflection at Capacity: | 50,000 lb = .018"/.5mm, 65,000 lb = .022"/.6mm, 100,000 lb = .034"/.9mm |
| Temperature: | Compensated range 14°F to 104°F/-10°C to 40°C | Seal Type: | Welded seal*, IP67 |
| Manufacturer | | Cable Length: | 40'/12.2m |
| Model Number: | 5223-B10-XX-40P1 (1:10,000) | Cable Color Code: | Red + Excitation Black - Excitation Green + Signal White - Signal Orange ... Shield |
| Safe Overload: | 150% Full scale | Warranty: | 3 years |
| Rated Excitation: | 10V AC/DC (20V maximum) | | |
| Non-repeatability: | 0.01% Full scale | | |

5223 ORDER INFORMATION

| Load Rating | Part # | Suggested List Price |
|--------------------------|--------|----------------------|
| 50,000 lb (22,679.6 kg) | 21605 | \$850.00 |
| 65,000 lb (29,483.5 kg) | 21606 | \$850.00 |
| 100,000 lb (45,359.2 kg) | 21607 | \$1,200.00 |

INTERCHANGEABLE PRODUCTS

| Manufacturer | Model |
|----------------------------|------------------------|
| Rice Lake Weighing Systems | (see page 139) RL75223 |
| Thurman® | TSC 800 |
| Celtron | (see page 184) HED |

WEIGH MODULE AVAILABLE

| Model | Page # |
|------------|--------|
| Translink™ | 78 |



*NOTE: Conduit is recommended for maximum protection against the ingress of water and moisture through the cable entry.

Thurman is a registered trademark of Thurman Scale Co.

USA: 800-472-6703 • Canada/Mexico: 800-321-6703 • International: 715-234-9171

Prices & Specifications subject to change without notice