

SURVIVOR® HE Weigh Modules

Contents

SURVIVOR Weigh Modules & Waterproof Guarantee	10
Using International Protection (IP) Ratings	11
SURVIVOR ITCM	12
Paramounts® Medium-Capacity	14
SURVIVOR 1700HE Light- to Medium-Capacity	16
SURVIVOR 1855HE Medium-Capacity	18
SURVIVOR 2100HE Heavy-Capacity	20

Taking Weighing Technology to ExtremesSM

Weigh Module Survival in the Harshest Conditions... Guaranteed!



SURVIVOR® HE weigh modules offer weight-derived process and inventory control in hostile environments with up to 10 times the accuracy of other sensors. Designed for dependability, accuracy, and worry-free operation, all SURVIVOR HE models feature stainless steel construction and hermetically sealed, stainless steel load cells for the ultimate in washdown and corrosive environment protection.



Stainless steel, hermetically sealed, IP67 or greater

- Stainless steel construction ensures corrosion resistance.
- Hermetically sealed—welded gauge cavities and cable entry seals provide moisture and mechanical protection.
- IP ratings—International Protection ratings (see page 9) of IP67 or greater ensure dust and moisture protection including submersion and washdown.

Guaranteed Waterproof



All SURVIVOR HE weigh modules use load cells that are guaranteed waterproof. Any SURVIVOR HE load cell marked as waterproof will be repaired or replaced if moisture ingress is cited as the reason for failure. This warranty is effective for a period of two years from the date of installation or, when proper documentation of installation cannot be provided, from the date of invoice. Please refer to our Warranty on page 356 for details.

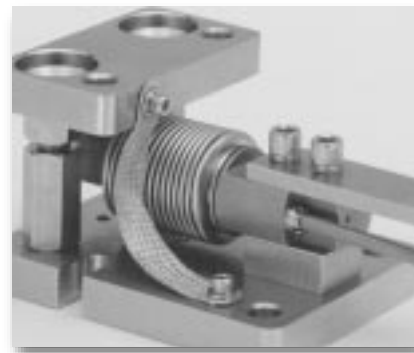
Designed to last, the difference is in the details...



Waterproof cable-entry systems provide long-lasting protection in any environment.



Laser-fused stainless steel cavity covers provide a true hermetic seal.



Weldless stainless steel construction retains less residue and allows fast, thorough cleaning.

Using International Protection (IP) Ratings to help select proper equipment for your application...

For hermetically-sealed load cells, Rice Lake Weighing Systems uses the International Protection (IP) rating system. We find the IP numbers and their definitions are suitable for the classification of hermetically-sealed load cells and only apply IP numbers to such cells. The IP numbers on a hermetically-sealed cell further specify the treatment a specific cell can endure in environments more severe than simple washdown. The following table defines the IP numbers alone and in conjunction with the hermetically-sealed rating.

Example: Protection level offered by an IP67 rated product

IP 67

► **Protection against solid objects**
First number (in this case 6)

- 0 No protection
- 1 Protected from solid objects up to 50 mm (e.g., accidental touch by hands)
- 2 Protected from solid objects up to 12 mm (e.g., fingers)
- 3 Protected from solid objects more than 25 mm (e.g., tools and small wires)
- 4 Protected from solid objects more than 1 mm (e.g., small wires)
- 5 Protected from dust; limited entrance (no harmful deposit)
- 6 Totally protected from dust

► **Protection against liquids**
Second number (in this case 7)

- 0 No protection
- 1 Protected from vertically-falling drops of water (e.g., condensation)
- 2 Protected from direct sprays of water up to 15° from vertical
- 3 Protected from direct sprays of water up to 60° from vertical
- 4 Protected from water sprayed from all directions; limited entrance allowed
- 5 Protected from low pressure jets of water from all directions; limited entrance allowed
- 6 Protected from strong jets of water (e.g., for use on ship decks); limited entrance allowed
- 7 Protected from the effects of immersion between 15cm and 1m
- 8 Protected from extended periods of immersion under pressure

IP Numbers with Hermetically Sealed (HS) or Environmentally Protected (EP) Ratings

Rating	Protection
EP	Dust proof, not protected from moisture or water
IP65	Dust proof, protected from splashes and low-pressure jets
IP66	Dust proof, protected from strong water jets
IP67	Dust proof, protected from temporary immersion in water 1 meter deep for 30 minutes
IP68	Dust proof, protected from continuous immersion in water under more severe conditions than IP67
IP66/68	Dust proof, protected from strong water jets and/or constant immersion

SURVIVOR[®] HE Weigh Modules

SURVIVOR ITCM HE - Stainless Steel, Hermetically Sealed Isolated Tension Cell Modules



The ITCM Series utilizes several Rice Lake Weighing Systems components to provide an unmatched level of performance in tank and hopper weighing applications and mechanical scale conversions. The SURVIVOR ITCM HE incorporates clevis and unique rod end ball joint assemblies to reduce the overall length to less than half of the traditional tension cell mounts, while providing correct load alignment. In addition, the load cell is completely electrically isolated* from stray currents, which are a major cause of load cell failure. To complete the design, a bonding strap connects the two clevis assemblies to further provide safety to your load cells.

Load Cell Certifications:



Complete Kit Includes:

- 3 or 4 ITCM assemblies with UB1/UB6 Flintec Stainless Steel, Hermetically Sealed S-Beam load cells
- 1 EL604STA NEMA 4X stainless steel signal trim junction box
- 25' of our Hostile Environment EL147HE SURVIVOR[®] load cell cable

APPLICATIONS:

- Suspended hoppers and tanks
- Mechanical scale conversions
- Use as a single module or in multiples

STANDARD FEATURES:

- Capacities (per module): 1KN-20KN (225-4500 lb/102.1-2039.43 kg)
- Clevis mounts with nylon insulating washers
- Teflon[®]-lined rod end ball joints*
- Load cell is completely isolated from stray currents*
- Bonding strap provides alternative path to ground
- Complete package for ease of installation
- Provides correct loadcell loading even in difficult installations
- Lower overall length compared to other isolated tension assemblies
- Stainless steel, hermetically sealed load cells

Important: Read "Load Cell Mounting Hardware Safety Guidelines" on page 367.

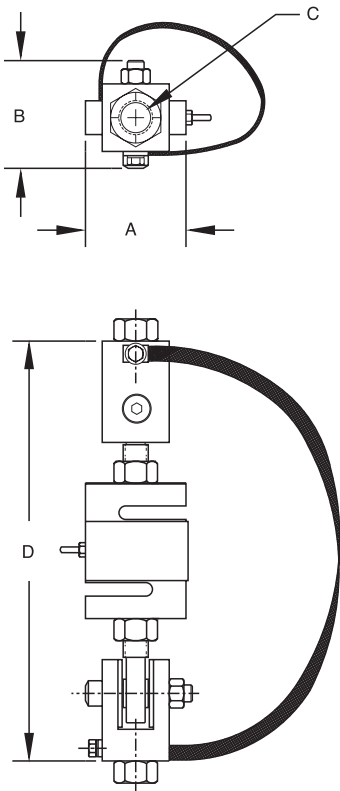
* Excluding 20,000 lb (9071.9 kg) capacity

Teflon is a registered trademark of E.I. DuPont

ITCM HE Specifications

Complete Kit!
Compare
& Save!

SURVIVOR Weigh Modules

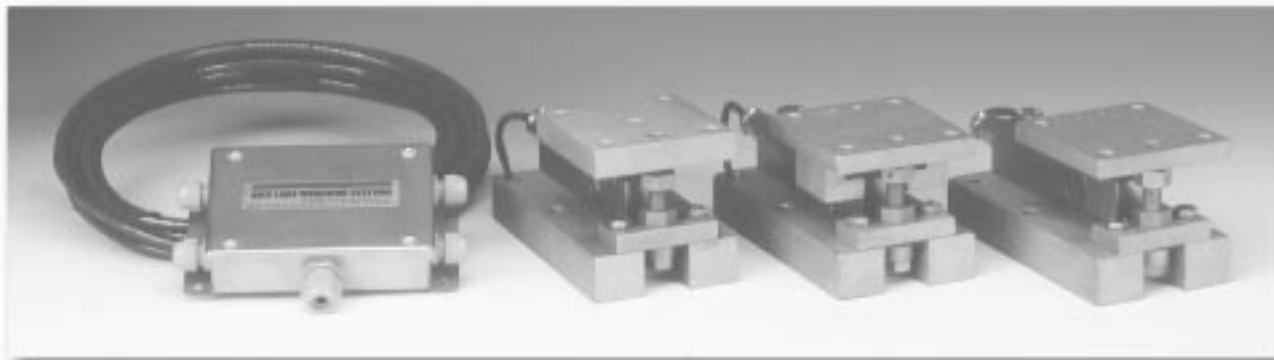


ITCM HE ORDER INFORMATION

* LOAD CELL CAPACITY	DIMENSIONS - INCHES (MILLIMETERS)				Single Module		3-Module Kits		4-Module Kits	
	A	B	C	D	Part #	Suggested List Price	Part #	Suggested List Price	Part #	Suggested List Price
225 lb (102.2 kg)	2.42 (61.4)	2.68 (68.1)	1/2-13 NC	8.92 (ref) (226.5)	53168	\$995.00	53363	\$3,195.00	53358	\$4,095.00
520 lb (236.1 kg)	2.42 (61.4)	2.68 (68.1)	1/2-13 NC	8.92 (ref) (226.5)	53170	\$995.00	53364	\$3,195.00	53359	\$4,095.00
1125 lb (510.8 kg)	2.42 (61.4)	2.68 (68.1)	1/2-13 NC	8.92 (ref) (226.5)	53167	\$995.00	53365	\$3,195.00	53360	\$4,095.00
2250 lb (1021.5 kg)	3.38 (85.9)	2.68 (68.1)	5/8-11 NC	10.12 (ref) (257.0)	53171	\$1,195.00	53366	\$3,695.00	53361	\$4,895.00
4500 lb (2041.2 kg)	3.38 (85.9)	2.68 (68.1)	3/4-10 NC	10.12 (ref) (257.0)	53169	\$1,395.00	53367	\$3,895.00	53362	\$5,695.00

SURVIVOR® HE Weigh Modules

Paramounts® Medium-Capacity Weigh Module Systems



Consisting of three different weigh module designs, the Paramounts system offers superior accuracy, even in applications with extreme expansion, contraction and vibration. The fixed-pin module acts as the vessel's primary reference point, enabling rotation. A single side-stop module is then paired with the fixed-pin module to permit mechanical expansion and contraction in one direction. The vessel then becomes a high-accuracy weighing system with the addition of one to six free-sliding modules. This system offers the free motion necessary to eliminate unwanted mechanical side loads, as well as the strength needed to keep the vessel in check. This gives the Paramounts system its industry-leading reputation for exceptional accuracy in unfriendly environments.

Integral jacking/shipping bolts enhance safety by preventing accidental lift-off, facilitate quick field removal of load cells and eliminate load cell damage during transportation. Matched outputs and field-replaceable cable simplify installation and enhance serviceability.

As a system, Paramounts represent the ultimate combination of convenience, accuracy and control.

Load Cell Certifications:



IP66/68

APPLICATIONS:

- Medium-capacity, high-vibration mixers, blenders and tanks in temperature extremes
- Chemical batching/blending
- Pharmaceutical processing
- Food processing
- Petroleum refining and batching

Complete Kit Includes:

- 1 EL604ETA NEMA 4X stainless steel excitation trim junction box
- 1 fixed-pin module, 1 side-stop module, and 1 or 2 free-sliding assemblies. Each module is complete with a FLINTEC SB4 or SB10 (225 and 520 lb) stainless steel hermetically-sealed load cell
- 25' of our Hostile Environment EL147HE SURVIVOR® load cell cable

STANDARD FEATURES:

- Capacities (per module): 225 lb-22,500 lb (1KN/102.1 kg-100KN/10,205.9 kg)
- All stainless steel construction
- Bolt-in-place design; module bolts directly to tank leg without requiring additional load buttons or mounting plates
- Hermetically-sealed stainless steel load cells
- Load cell outputs are matched to $\pm 0.07\%$, minimizing maintenance costs
- Unique design allows for thermal expansion/contraction
- Low-profile, self-checking design
- Jacking screw allows empty vessel to be lifted clear of load cell for maintenance
- Unique patented blind load hole technology minimizes unwanted side and eccentric loading
- Vessel is free to slide laterally on Teflon®-coated surfaces

OPTIONAL FEATURES:

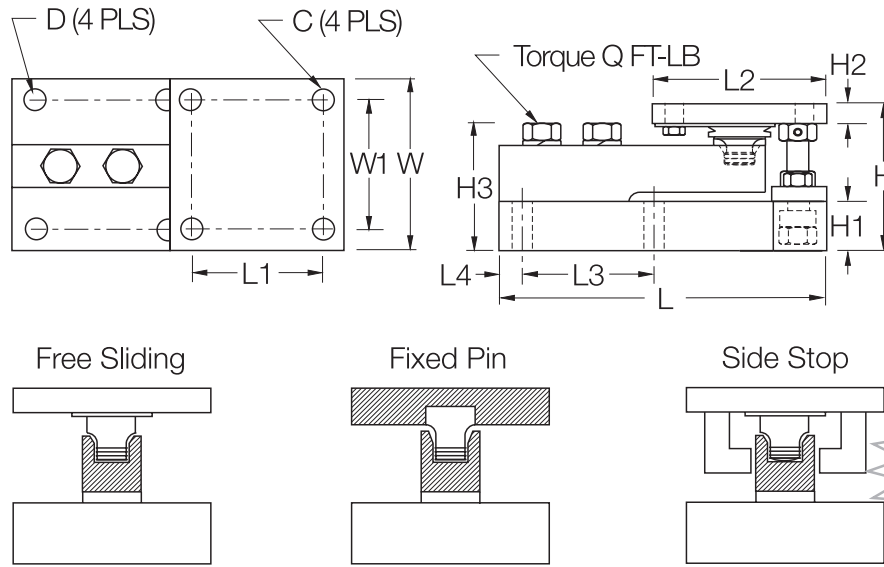
- NTEP-certified load cells available: capacities 1125-11,250 lb
- OIML-certified load cells available: capacities 1125-11,250 lb

Teflon is a registered trademark of E.I. DuPont

Paramounts Stainless Steel Specifications

**Complete Kit!
Compare
& Save!**

SURVIVOR Weigh Modules



**New
Lower Price**

RATED CAPACITY	DIMENSIONS														Q	
	C	D	H	H1	*H2	**H2	H3	L	L1	L2	L3	L4	W	W1	(FT- LB)	
lb/inches																
225 - 520	(1 - 2.3KN)	.375	.437	3.49	1.00	.50	.75	2.98	7.51	3.00	4.00	3.00	.50	4.00	3.00	65
1125 - 5200	(5 - 23KN)	.437	.437	3.58	1.25	.50	.75	3.06	7.51	3.00	4.00	3.00	.50	4.00	3.00	65
11,250	(50KN)	.562	.562	4.66	1.50	.62	1.00	4.09	9.19	3.87	5.00	3.87	.56	5.00	3.87	295
22,500	(100KN)	.688	.688	6.41	2.00	.75	1.25	5.73	11.46	4.75	6.00	4.75	.69	6.00	4.75	515
kg/millimeters																
102.2 - 236.1		9.5	11.1	88.6	25.4	12.7	19.1	75.7	190.8	76.2	101.6	76.2	12.7	101.6	76.2	
510.8 - 2360		11.1	11.1	90.9	31.8	12.7	19.1	77.7	190.8	76.2	101.6	76.2	12.7	101.6	76.2	
5107.5		14.3	14.3	118.4	38.1	15.7	25.4	103.9	233.4	98.3	127.0	98.3	14.2	127.0	98.3	
10,215.0		17.5	17.5	162.8	50.8	19.1	31.8	145.5	291.1	120.7	152.4	120.7	17.5	152.4	120.7	

KN = Kilonewtons

*Side Stop and Free Sliding units.

**Fixed Pin units.

PARAMOUNTS NTEP/OIML ORDER INFORMATION

Load Rating (per module)	Part #	Suggested List Price
NTEP/OIML C3 3-Module Kits:		
1125 lb (5KN/510.8 kg)	29883	\$3,565.00
2250 lb (10KN/1021.5 kg)	29884	\$3,565.00
5200 lb (23KN/2360.8 kg)	29885	\$3,565.00
11,250 lb (50KN/5107.5 kg)	29886	\$4,795.00
NTEP/OIML C3 4-Module Kits:		
1125 lb (5KN/510.8 kg)	29879	\$4,665.00
2250 lb (10KN/1021.5 kg)	29880	\$4,665.00
5200 lb (23KN/2360.8 kg)	29881	\$4,665.00
11,250 lb (50KN/5107.5 kg)	29882	\$6,020.00

PARAMOUNTS NON-NTEP ORDER INFORMATION

Load Rating (per module)	Part #	Suggested List Price
Non-NTEP 3-Module Kits:		
225 lb (1KN/102.2 kg)	38203	\$3,215.00
520 lb (2.3KN/236.1 kg)	38207	\$3,215.00
1125 lb (5KN/510.8 kg)	17991	\$3,365.00
2250 lb (10KN/1021.5 kg)	17992	\$3,365.00
5200 lb (23KN/2360.8 kg)	17993	\$3,365.00
11,250 lb (50KN/5107.5 kg)	17994	\$4,420.00
22,500 lb (100KN/10,215.0 kg)	17995	\$5,275.00
Non-NTEP 4-Module Kits:		
225 lb (1KN/102.2 kg)	38204	\$4,215.00
520 lb (2.3KN/236.1 kg)	38208	\$4,215.00
1125 lb (5KN/510.8 kg)	17998	\$4,400.00
2250 lb (10KN/1021.5 kg)	17999	\$4,400.00
5200 lb (23KN/2360.8 kg)	18000	\$4,400.00
11,250 lb (50KN/5107.5 kg)	18001	\$5,525.00
22,500 lb (100KN/10,215.0 kg)	18002	\$6,925.00

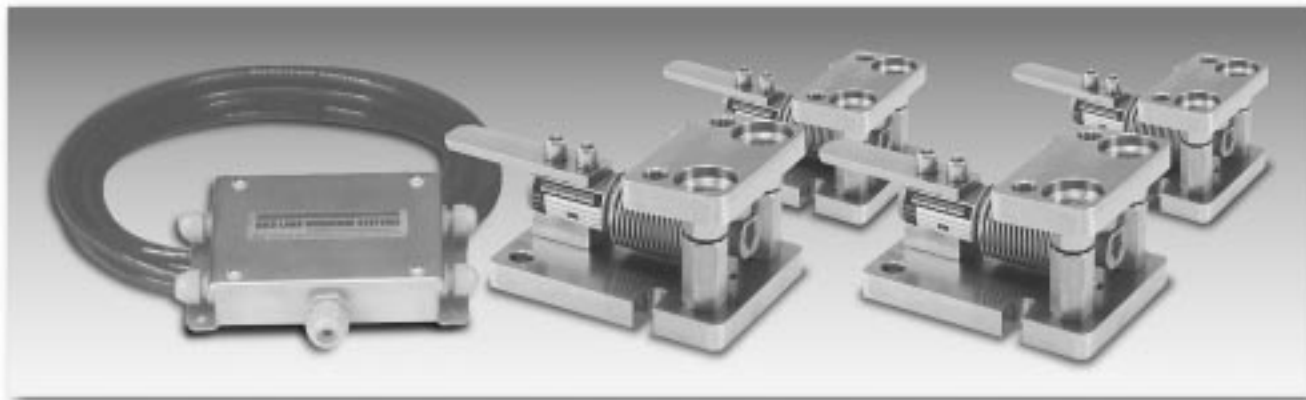
USA: 800-472-6703 • Canada/Mexico: 800-321-6703 • International: 715-234-9171

Prices & Specifications subject to change without notice

SURVIVOR® HE Weigh Modules

1700HE

Light- to Medium-Capacity Weigh Modules



The 1700HE offers precision-machined, weldless construction to maximize pressure washdown cleaning effectiveness. This design, coupled with integral jacking/shipping bolts, eases installation and minimizes maintenance costs. OIML C3-certified load cells in capacities from 44 lb to 11,000 lb provide accurate, consistent weighments. Ideal for multi-ingredient micro-batching applications, the 1700HE provides exceptional performance in hostile environments.

The unique design of the 1700HE isolates the load cell from side loads, overloads and underloads, minimizing load cell mechanical damage and eliminating the need for extraneous hardware. The 1700HE offers a guaranteed waterproof rating to ensure reliable performance in moisture-laden environments.

Complete Kit Includes:

- 1 EL604STA NEMA 4X stainless steel signal-trim junction box
- 3 or 4 1700HE stainless steel compression mounts
- 3 or 4 RLHBB (5-250 kg) or RLHTO (500-5000 kg) stainless steel, hermetically-sealed single-ended beam load cells
- 25' of our Hostile Environment EL147HE SURVIVOR® load cell cable

Load Cell Certifications:



IP66/68



APPLICATIONS:

- Multi-ingredient micro-batching
- Meat and poultry processing
- Chemical batching/blending
- Dye/ink blending

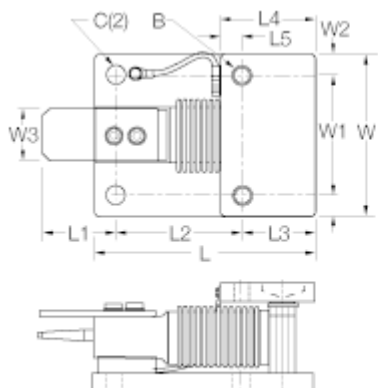
STANDARD FEATURES:

- All stainless steel construction
- Hermetically-sealed, stainless steel load cells, IP66/68, guaranteed waterproof
- OIML-certified load cells from 44 lb to 11,000 lb
- Bolt-in-place design; module bolts directly to tank leg without requiring additional load buttons or mounting plates
- Self-checking with lift-off/tip-over protection and jacking/shipping bolts
- Load cell is isolated from overload in all directions
- Weldless construction retains less residue and allows fast, thorough cleaning
- 2-year warranty

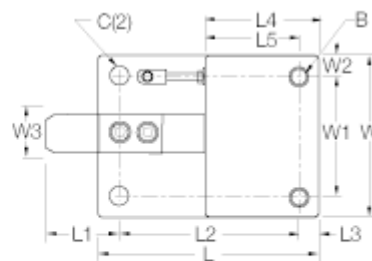
1700HE Specifications

**Complete Kit!
Compare
& Save!**

SURVIVOR Weigh Modules



5 kg-250 kg capacities



500 kg-5000 kg capacities

RATED CAPACITY	DIMENSIONS													
	C	B	*H1	**H2	L	L1	L2	L3	L4	L5	W	W1	W2	W3
lb/inches														
11-550	.40	1/2-20NF	3.15	3.39	5.20	2.52	2.99	1.65	2.20	.55	3.78	2.76	.51	.98
1100-4400	.78	3/4-10NC	3.93	4.25	6.50	2.76	5.12	.59	3.15	2.54	4.33	2.76	.79	1.18
11,000	.78	3/4-10NC	5.31	5.63	8.46	3.19	6.34	.79	3.56	2.78	5.91	3.54	1.18	1.57
kg/millimeters														
5-250	10.3	1/2-20NF	80.0	86.1	132.1	64.0	76.0	42.0	56.0	14.0	96.0	70.0	13.0	25.0
500-2000	20.0	3/4-10NC	99.8	108.0	165.0	70.0	130.0	15.0	80.0	64.5	110.0	70.0	20.0	30.0
5000	20.0	3/4-10NC	135.0	143.0	215.0	81.0	161.0	20.0	90.0	70.5	150.0	90.0	30.0	40.0

*In weighing position

**In jacked-up position for load cell shipping or removal

1700HE SINGLE MODULE ORDER INFORMATION

Load Rating (per module)	Part #	Suggested List Price
OIML C3-Certified Load Cells Included:		
5 kg (11.0 lb)	32687	\$825.00
10 kg (22.0 lb)	32688	\$825.00
20 kg (44.1 lb)	32689	\$825.00
50 kg (110.2 lb)	32690	\$825.00
100 kg (220.5 lb)	32691	\$825.00
200 kg (440.9 lb)	32692	\$825.00
250 kg (551.2 lb)	32693	\$825.00
500 kg (1102.3 lb)	32974	\$995.00
1000 kg (2204.6 lb)	32973	\$995.00
2000 kg (4,409.2 lb)	32972	\$995.00
5000 kg (11,023.1 lb)	32971	\$1,225.00

1700HE KIT ORDER INFORMATION

Load Rating (per module)	Part #	Suggested List Price
3-Module Kits		
OIML C3-Certified Load Cells:		
5 kg (11.0 lb)	32920	\$2,675.00
10 kg (22.0 lb)	32921	\$2,675.00
20 kg (44.1 lb)	32922	\$2,675.00
50 kg (110.2 lb)	32923	\$2,675.00
100 kg (220.5 lb)	32924	\$2,675.00
200 kg (440.9 lb)	32925	\$2,675.00
250 kg (551.2 lb)	32926	\$2,675.00
500 kg (1102.3 lb)	32980	\$3,185.00
1000 kg (2204.6 lb)	32981	\$3,185.00
2000 kg (4,409.2 lb)	32982	\$3,185.00
5000 kg (11,023.1 lb)	32983	\$3,995.00

4-Module Kits

OIML C3-Certified Load Cells:		
5 kg (11.0 lb)	32927	\$3,500.00
10 kg (22.0 lb)	32928	\$3,500.00
20 kg (44.1 lb)	32929	\$3,500.00
50 kg (110.2 lb)	32930	\$3,500.00
100 kg (220.5 lb)	32931	\$3,500.00
200 kg (440.9 lb)	32932	\$3,500.00
250 kg (551.2 lb)	32933	\$3,500.00
500 kg (1102.3 lb)	32984	\$4,180.00
1000 kg (2204.6 lb)	32985	\$4,180.00
2000 kg (4,409.2 lb)	32986	\$4,180.00
5000 kg (11,023.1 lb)	32987	\$4,895.00

USA: 800-472-6703 • Canada/Mexico: 800-321-6703 • International: 715-234-9171

Prices & Specifications subject to change without notice

SURVIVOR® HE Weigh Modules

1855HE Medium-Capacity Weigh Modules



The internal height adjustment feature of the 1855HE eliminates the need for shims or external hardware, simplifying installation. The standard conduit adapter allows for connection to conduit for cable protection. With standard NTEP-certified, 1:5000 division class III load cells, the 1855HE provides up to 0.02% total error. Highly versatile, the 1855HE offers worry-free operation in a wide variety of rugged applications.

Load Cell Certifications:



IP67

Complete Kit Includes:

- 1 EL604STA NEMA 4X stainless steel signal-trim junction box
- 3 or 4 1855HE stainless steel compression mounts
- 3 or 4 RL35082 stainless steel, welded seal single-ended beam load cells
- 25' of our Hostile Environment EL147HE SURVIVOR® load cell cable

APPLICATIONS:

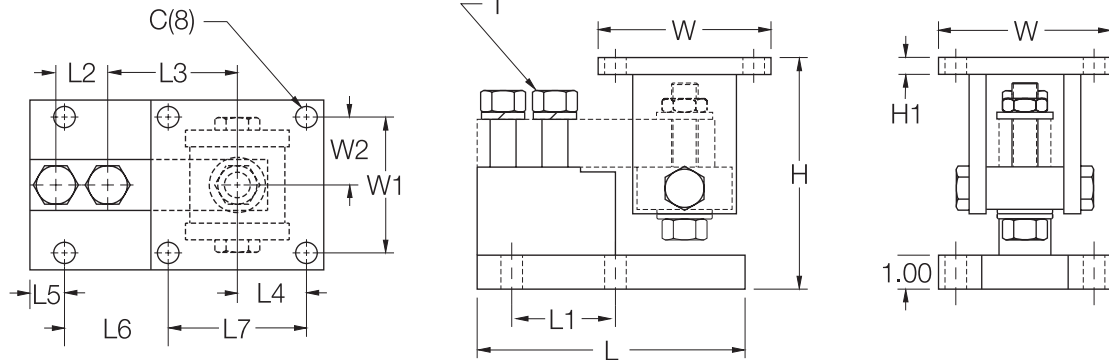
- Medium-capacity hoppers, bins & tanks
- Chemical batching/blending
- Fertilizer blending

STANDARD FEATURES:

- All stainless steel construction
- Welded seal, stainless steel load cells, IP67, guaranteed waterproof
- NTEP-certified load cells, 5000d, Class III Multiple Cell
- Bolt-in-place design; module bolts directly to tank leg without requiring additional load buttons or mounting plates
- Self-checking design with lift-off/tip-over protection
- 2-year warranty

1855HE Specifications

**Complete Kit!
Compare
& Save!**



RATED CAPACITY	C	H MIN/MAX	H1	L	L1	L2	L3	L4	L5	L6	L7	T	W	W1	W2
lb/inches															
1000-4000	.62	5.25/5.56	.50	6.00	2.00	1.00	3.00	2.00	.68	1.94	4.00	1/2-13 UNC	5.00	4.00	2.00
5000-10,000	.62	6.12/6.62	.50	7.75	3.00	1.50	3.75	2.00	1.03	2.97	4.00	3/4-10 UNC	5.00	4.00	2.00
kg/millimeters															
453.6-1814.4	15.8	133.4/141.2	12.7	152.4	50.8	25.4	76.2	50.8	17.3	49.3	101.6	1/2-13 UNC	127.0	101.6	50.8
2268.0-4535.9	15.8	155.4/168.1	12.7	196.9	76.2	38.1	95.3	50.8	26.2	75.4	101.6	3/4-10 UNC	127.0	101.6	50.8

1855HE SINGLE MODULE ORDER INFORMATION

Load Rating (per module)	Part #	Suggested List Price
Single Modules (Include Load Cells)		
1000 lb (453.6 kg)	32975	\$895.00
2500 lb (1134.0 kg)	32976	\$895.00
4000 lb (1814.4 kg)	32977	\$895.00
5000 lb (2268.0 kg)	32978	\$995.00
10,000 lb (4535.9 kg)	32979	\$995.00

1855HE KIT ORDER INFORMATION

Load Rating (per module)	Part #	Suggested List Price
3-Module Kits:		
1000 lb (453.6 kg)	30390	\$2,885.00
2500 lb (1134.0 kg)	30388	\$2,885.00
4000 lb (1814.4 kg)	30386	\$2,885.00
5000 lb (2268.0 kg)	30384	\$3,185.00
10,000 lb (4535.9 kg)	30382	\$3,185.00
4-Module Kits:		
1000 lb (453.6 kg)	30389	\$3,780.00
2500 lb (1134.0 kg)	30387	\$3,780.00
4000 lb (1814.4 kg)	30385	\$3,780.00
5000 lb (2268.0 kg)	30383	\$4,180.00
10,000 lb (4535.9 kg)	30381	\$4,180.00

SURVIVOR® HE Weigh Modules

2100HE Heavy-Capacity Weigh Modules



Incorporating an articulating load plate, hardened load pin and double-ended beam load cell into one simple design, the 2100HE tolerates eccentric loads and side loads of up to 100% of capacity.

The 2100HE comes standard with NTEP-certified, 1:5000 division class III load cells, yielding up to 0.02% total error. An integral conduit adapter offers added washdown protection. These standard features give the 2100HE accuracy and dependability in one heavy-weight package.

The simple load introduction and load cell design provides consistent accuracy in washdown applications, making the 2100HE ideal for high-capacity hostile environments.

Complete Kit Includes:

- 1 EL604STA NEMA 4X stainless steel signal-trim junction box
- 3 or 4 2100HE stainless steel compression mounts
- 3 or 4 RL75060 or RL75060S stainless steel, welded seal double-ended beam load cells
- 25' of our Hostile Environment EL147HE SURVIVOR® load cell cable

Load Cell Certifications:



APPLICATIONS:

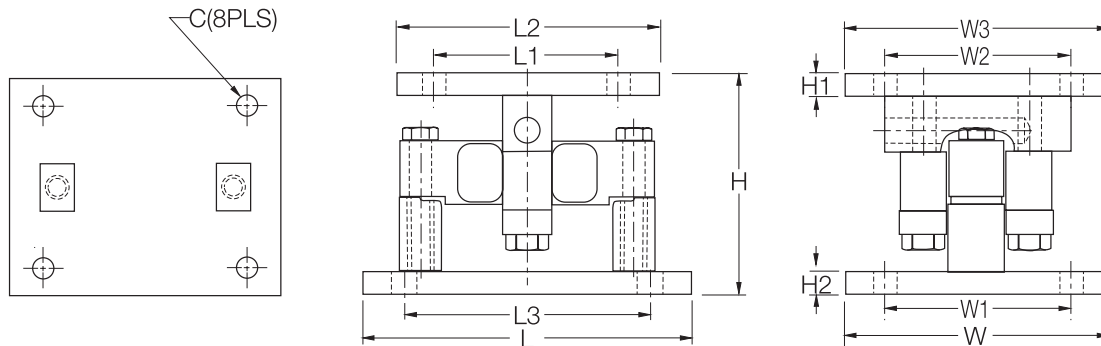
- Heavy-capacity tanks, blenders, reactors and bulk inventory management
- Petroleum refining process control
- Chemical blending/batching
- Hostile environment truck and railroad track weighing

STANDARD FEATURES:

- All stainless steel construction
- Welded seal, stainless steel load cells, IP67, guaranteed waterproof
- NTEP-certified load cells, 5000d, Class III/10,000d, Class III/L Multiple Cell
- Bolt-in-place design; module bolts directly to tank leg without requiring additional load buttons or mounting plates
- Self-checking design with lift-off/tip-over protection
- 2-year warranty

2100HE Specifications

**Complete Kit!
Compare
& Save!**



SURVIVOR Weigh Modules

RATED CAPACITY	C	H	H1	H2	L	DIMENSIONS						
						L1	L2	L3	W	W1	W2	W3
lb/inches												
20,000	.78	6.85	.75	.75	10.00	6.00	8.00	7.50	8.00	6.00	6.00	8.00
35,000-100,000	1.13	9.42	1.00	1.00	14.00	6.50	9.00	11.50	10.00	7.50	6.50	9.00
kg/millimeters												
9071.9	19.8	174.0	19.1	19.1	254.0	152.4	203.2	190.5	203.2	152.4	152.4	203.2
15,875.7-45,359.2	28.7	239.3	25.4	25.4	355.6	165.1	228.6	292.1	254.0	190.5	165.1	228.6

2100HE SINGLE MODULE ORDER INFORMATION

Load Rating (per module)	Part #	Suggested List Price
Single Modules (Include Load Cell)		
20,000 lb (9071.8 kg)	32951	\$1,445.00
25,000 lb (11,339.8 kg)	65541	\$1,445.00
35,000 lb (15,875.7 kg)	32952	\$2,110.00
50,000 lb (22,679.6 kg)	32953	\$2,190.00
60,000 lb (27,215.5 kg)	32954	\$2,190.00
75,000 lb (34,019.4 kg)	32955	\$2,190.00
100,000 lb (45,359.2 kg)	32956	\$3,685.00

2100HE KIT ORDER INFORMATION

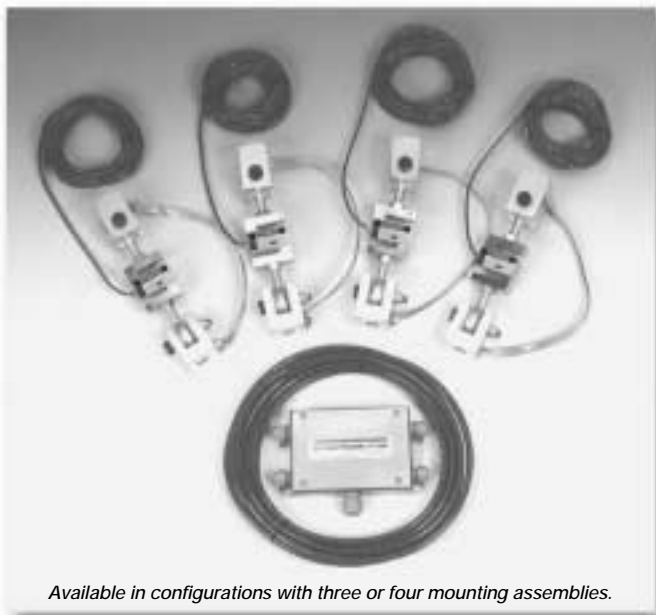
Load Rating (per module)	Part #	Suggested List Price
3-Module Kits		
20,000 lb (9071.8 kg)	32970	\$4,500.00
25,000 lb (11,339.8 kg)	65984	\$4,500.00
35,000 lb (15,875.7 kg)	32969	\$6,500.00
50,000 lb (22,679.6 kg)	32968	\$6,750.00
60,000 lb (27,215.5 kg)	32967	\$6,750.00
75,000 lb (34,019.4 kg)	32966	\$6,750.00
100,000 lb (45,359.2 kg)	32965	\$11,275.00
4-Module Kits		
20,000 lb (9071.8 kg)	32964	\$6,000.00
25,000 lb (11,339.8 kg)	65983	\$6,000.00
35,000 lb (15,875.7 kg)	32963	\$8,600.00
50,000 lb (22,679.6 kg)	32962	\$8,900.00
60,000 lb (27,215.5 kg)	32961	\$8,900.00
75,000 lb (34,019.4 kg)	32960	\$8,900.00
100,000 lb (45,359.2 kg)	32959	\$14,900.00

Contents

ITCM Isolated Tension Cell Mount Assembly	24
ITCM SS Isolated Tension Cell Mount Assembly	26
ITCM HE Isolated Tension Cell Mount Assembly	28
RL50210 TA, 50-500 lb Capacities	30
RL50210 TA, 1000-2500 lb Capacities	32
Paramounts® EP	34
Paramounts® HS	36
RLBTM	38
RL1800 Series	40
RL1900 Series	42
RL2200 Series	44
RL2200 SS Series	46
RLC	48
220 Universal Mount	50
EZ Mount 1-Mild Steel	52
EZ Mount 1-Stainless Steel	54
EZ Mount 1 HE	56
RL1600 Series-Cast Iron	58
RL1600 Series-Mild Steel	60
RL1600 Series-Stainless Steel	62
RL1600 HE	64
65092 TWA	66
Rocker Column Truck Scale Kit	68
MVS Mount	70
TSA	72
RL8500 HE-Stainless Steel	74
RL8000 HE-Stainless Steel	76
Translink™	78
Motor Truck Scale Electronic Conversion Kit	80
MagnaMount®	82
Electronic Floor Scale Underdeck Kits	84

Weigh Modules • Tank and Hopper Kits

ITCM Isolated Tension Cell Modules



Available in configurations with three or four mounting assemblies.

The ITCM Series utilizes several Rice Lake Weighing Systems components to provide an unmatched level of performance in tank and hopper weighing applications and mechanical scale conversions. The ITCM incorporates clevis and unique rod end ball joint assemblies to reduce the overall length to less than half of the traditional tension cell mounts, while providing correct load alignment. In addition, the load cell is completely electrically isolated* from stray currents, which are a major cause of load cell failure. To complete the design, a bonding strap connects the two clevis assemblies to further provide safety to your load cells.

Load Cell Certifications:



Module with
RL20000 S-Beam
load cell. Refer to
page 97 for load
cell specifications.

Complete Kit Includes:

- 3 or 4 ITCM assemblies with RL20000 NTEP-certified S-Beam load cells
- 1 EL604STA NEMA 4X stainless steel signal trim junction box
- 25' of our Hostile Environment EL147HE SURVIVOR® load cell cable

APPLICATIONS:

- Suspended hoppers and tanks
- Mechanical scale conversions
- Use as a single module or in multiples

STANDARD FEATURES:

- Capacities (per module): 100-20,000 lb (45.4-9071.1 kg)
- Clevis mounts with nylon insulating washers
- Teflon®-lined rod end ball joints*
- Load cell is completely isolated from stray currents*
- Bonding strap provides alternative path to ground
- Complete package for ease of installation
- Provides correct load cell loading even in difficult installations
- Lower overall length compared to other isolated tension assemblies

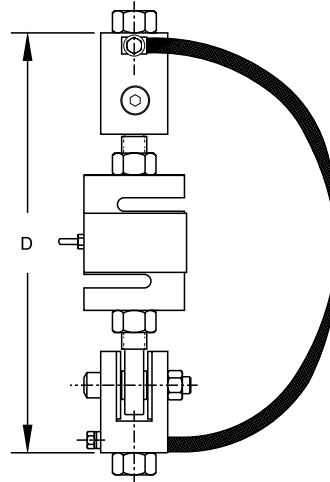
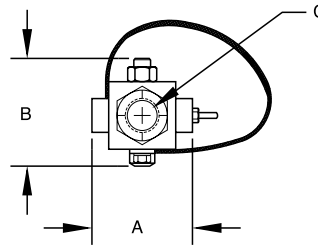
Important: Read "Load Cell Mounting Hardware Safety Guidelines" on page 367.

* Excluding 20,000 lb (9071.9 kg) capacity

Teflon is a registered trademark of E.I. DuPont

ITCM Specifications

**Complete Kit!
Compare
& Save!**



Weigh Modules

ITCM ORDER INFORMATION

* LOAD RATING (LOAD CELL CAPACITY)	DIMENSIONS - INCHES (MILLIMETERS)				Single Module		3-Module Kits		4-Module Kits	
	A	B	C	D	Part #	Suggested List Price	Part #	Suggested List Price	Part #	Suggested List Price
100 lb (45.4 kg)	2.00 (50.8)	1.81 (46.0)	3/8-16 NC	7.00 (ref) (177.8)	17851	\$430.00	18003	\$1,540.00	18027	\$1,970.00
100 lb (45.4 kg)	2.00 (50.8)	1.81 (46.0)	1/2-13 NC	7.00 (ref) (177.8)	17831	\$430.00	18004	\$1,540.00	18028	\$1,970.00
150 lb (68.0 kg)	2.00 (50.8)	1.81 (46.0)	3/8-16 NC	7.00 (ref) (177.8)	30337	\$430.00	30357	\$1,540.00	30359	\$1,970.00
150 lb (68.0 kg)	2.00 (50.8)	1.81 (46.0)	1/2-13 NC	7.00 (ref) (177.8)	30336	\$430.00	30358	\$1,540.00	30360	\$1,970.00
200 lb (90.7 kg)	2.00 (50.8)	1.81 (46.0)	3/8-16 NC	7.00 (ref) (177.8)	30335	\$430.00	30361	\$1,540.00	30363	\$1,970.00
200 lb (90.7 kg)	2.00 (50.8)	1.81 (46.0)	1/2-13 NC	7.00 (ref) (177.8)	30338	\$430.00	30362	\$1,540.00	30364	\$1,970.00
250 lb (113.4 kg)	2.00 (50.8)	1.81 (46.0)	3/8-16 NC	7.00 (ref) (177.8)	17852	\$430.00	18005	\$1,540.00	18029	\$1,970.00
250 lb (113.4 kg)	2.00 (50.8)	1.81 (46.0)	1/2-13 NC	7.00 (ref) (177.8)	17832	\$430.00	18006	\$1,540.00	18030	\$1,970.00
500 lb (226.8 kg)	2.68 (68.1)	2.68 (68.1)	1/2-13 NC	9.50 (ref) (241.3)	17853	\$460.00	18007	\$1,630.00	18031	\$1,995.00
500 lb (226.8 kg)	2.68 (68.1)	2.68 (68.1)	5/8-11 NC	9.50 (ref) (241.3)	17858	\$460.00	18008	\$1,630.00	18032	\$1,995.00
500 lb (226.8 kg)	2.68 (68.1)	2.68 (68.1)	3/4-10 NC	9.50 (ref) (241.3)	17833	\$460.00	18009	\$1,630.00	18033	\$1,995.00
750 lb (340.2 kg)	2.68 (68.1)	2.68 (68.1)	1/2-13 NC	9.50 (ref) (241.3)	17854	\$460.00	18010	\$1,630.00	18034	\$1,995.00
750 lb (340.2 kg)	2.68 (68.1)	2.68 (68.1)	5/8-11 NC	9.50 (ref) (241.3)	17859	\$460.00	18011	\$1,630.00	18035	\$1,995.00
750 lb (340.2 kg)	2.68 (68.1)	2.68 (68.1)	3/4-10 NC	9.50 (ref) (241.3)	17834	\$460.00	18012	\$1,630.00	18036	\$1,995.00
1000 lb (453.6 kg)	2.68 (68.1)	2.68 (68.1)	1/2-13 NC	9.50 (ref) (241.3)	17855	\$460.00	18013	\$1,630.00	18037	\$1,995.00
1000 lb (453.6 kg)	2.68 (68.1)	2.68 (68.1)	5/8-11 NC	9.50 (ref) (241.3)	17860	\$460.00	18014	\$1,630.00	18038	\$1,995.00
1000 lb (453.6 kg)	2.68 (68.1)	2.68 (68.1)	3/4-10 NC	9.50 (ref) (241.3)	17835	\$460.00	18015	\$1,630.00	18039	\$1,995.00
1500 lb (680.4 kg)	2.68 (68.1)	2.68 (68.1)	1/2-13 NC	9.50 (ref) (241.3)	17856	\$460.00	18016	\$1,630.00	18040	\$1,995.00
1500 lb (680.4 kg)	2.68 (68.1)	2.68 (68.1)	5/8-11 NC	9.50 (ref) (241.3)	17861	\$460.00	18017	\$1,630.00	18041	\$1,995.00
1500 lb (680.4 kg)	2.68 (68.1)	2.68 (68.1)	3/4-10 NC	9.50 (ref) (241.3)	17836	\$460.00	18018	\$1,630.00	18042	\$1,995.00
2000 lb (907.2 kg)	2.68 (68.1)	2.68 (68.1)	1/2-13 NC	9.50 (ref) (241.3)	17857	\$460.00	18019	\$1,630.00	18043	\$1,995.00
2000 lb (907.2 kg)	2.68 (68.1)	2.68 (68.1)	5/8-11 NC	9.50 (ref) (241.3)	17862	\$460.00	18020	\$1,630.00	18044	\$1,995.00
2000 lb (907.2 kg)	2.68 (68.1)	2.68 (68.1)	3/4-10 NC	9.50 (ref) (241.3)	17837	\$460.00	18021	\$1,630.00	18045	\$1,995.00
2500 lb (1134.0 kg)	2.68 (68.1)	2.68 (68.1)	5/8-11 NC	9.50 (ref) (241.3)	17863	\$460.00	18022	\$1,630.00	18046	\$1,995.00
2500 lb (1134.0 kg)	2.68 (68.1)	2.68 (68.1)	3/4-10 NC	9.50 (ref) (241.3)	17838	\$460.00	18023	\$1,630.00	18047	\$1,995.00
3000 lb (1360.8 kg)	3.37 (85.6)	3.37 (85.6)	3/4-10 NC	12.25 (ref) (311.2)	30339	\$500.00	30365	\$1,750.00	30366	\$2,230.00
5000 lb (2268.0 kg)	3.37 (85.6)	3.37 (85.6)	3/4-10 NC	12.25 (ref) (311.2)	17864	\$675.00	18024	\$2,280.00	18048	\$2,950.00
5000 lb (2268.0 kg)	3.37 (85.6)	3.37 (85.6)	1-8 NC	12.25 (ref) (311.2)	17839	\$675.00	18025	\$2,280.00	18049	\$2,950.00
10,000 lb (4535.9 kg)	3.37 (85.6)	3.37 (85.6)	1-8 NC	12.25 (ref) (311.2)	17840	\$675.00	18026	\$2,280.00	18050	\$2,950.00
15,000 lb (6803.9 kg)	4.00 (101.6)	4.12 (104.6)	1 1/4-7 NC	18.00 (ref) (457.2)	17960	\$1,540.00	30353	\$4,975.00	30354	\$6,400.00
20,000 lb (9071.9 kg)	5.00 (127.0)	4.12 (104.6)	1 1/2-6 UNC	20.00 (ref) (508.0)	17961	\$1,760.00	30355	\$5,545.00	30356	\$7,295.00

* Load Rating is per module

USA: 800-472-6703 • Canada/Mexico: 800-321-6703 • International: 715-234-9171

Prices & Specifications subject to change without notice

Weigh Modules • Tank and Hopper Kits

ITCM SS

Stainless Steel Isolated Tension Cell Modules



Available in configurations with three or four mounting assemblies.

The ITCM Series utilizes several Rice Lake Weighing Systems components to provide an unmatched level of performance in tank and hopper weighing applications and mechanical scale conversions. The ITCMSS incorporates clevis and unique rod end ball joint assemblies to reduce the overall length to less than half of the traditional tension cell mounts, while providing correct load alignment. In addition, the load cell is completely electrically isolated* from stray currents, which are a major cause of load cell failure. To complete the design, a bonding strap connects the two clevis assemblies to further provide safety to your load cells.

Load Cell Certifications:



Module with
RL20000SS S-Beam
load cell. Refer to
page 98 for load
cell specifications.



Complete Kit Includes:

- 3 or 4 ITCM assemblies with RL20000SS NTEP-certified S-Beam load cells
- 1 EL604STA NEMA 4X stainless steel signal trim junction box
- 25' of our Hostile Environment EL147HE SURVIVOR® load cell cable

APPLICATIONS:

- Suspended hoppers and tanks
- Mechanical scale conversions
- Use as a single module or in multiples

STANDARD FEATURES:

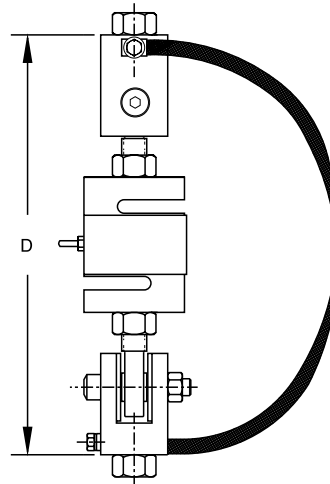
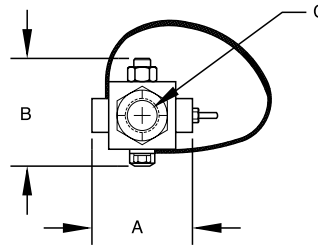
- Capacities (per module): 100-5,000 lb (45.4-2268.0 kg)
- Clevis mounts with nylon insulating washers
- Teflon®-lined rod end ball joints*
- Load cell is completely isolated from stray currents*
- Bonding strap provides alternative path to ground
- Complete package for ease of installation
- Provides correct load cell loading even in difficult installations
- Lower overall length compared to other isolated tension assemblies

Important: Read "Load Cell Mounting Hardware Safety Guidelines" on page 367.

Teflon is a registered trademark of E.I. DuPont

ITCM SS Specifications

**Complete Kit!
Compare
& Save!**



Weigh Modules

ITCM SS ORDER INFORMATION

* LOAD RATING (LOAD CELL CAPACITY)	DIMENSIONS - INCHES (MILLIMETERS)				Single Module		3-Module Kits		4-Module Kits	
	A	B	C	D	Part #	Suggested List Price	Part #	Suggested List Price	Part #	Suggested List Price
100 lb (45.4 kg)	2.00 (50.8)	1.81 (46.0)	3/8-16 NC	7.00 (ref) (177.8)	46765	\$695.00	46735	\$2,295.00	46751	\$2,895.00
100 lb (45.4 kg)	2.00 (50.8)	1.81 (46.0)	1/2-13 NC	7.00 (ref) (177.8)	46766	\$695.00	46736	\$2,295.00	46752	\$2,895.00
250 lb (113.4 kg)	2.00 (50.8)	1.81 (46.0)	3/8-16 NC	7.00 (ref) (177.8)	46767	\$695.00	46737	\$2,295.00	46753	\$2,895.00
250 lb (113.4 kg)	2.00 (50.8)	1.81 (46.0)	1/2-13 NC	7.00 (ref) (177.8)	46768	\$695.00	46738	\$2,295.00	46754	\$2,895.00
500 lb (226.8 kg)	2.68 (68.1)	2.68 (68.1)	1/2-13 NC	9.50 (ref) (241.3)	46769	\$695.00	46739	\$2,295.00	46755	\$2,895.00
500 lb (226.8 kg)	2.68 (68.1)	2.68 (68.1)	5/8-11 NC	9.50 (ref) (241.3)	46770	\$695.00	46740	\$2,295.00	46756	\$2,895.00
750 lb (340.2 kg)	2.68 (68.1)	2.68 (68.1)	1/2-13 NC	9.50 (ref) (241.3)	46771	\$695.00	46741	\$2,295.00	46757	\$2,895.00
750 lb (340.2 kg)	2.68 (68.1)	2.68 (68.1)	5/8-11 NC	9.50 (ref) (241.3)	46772	\$695.00	46742	\$2,295.00	46758	\$2,895.00
1000 lb (453.6 kg)	2.68 (68.1)	2.68 (68.1)	1/2-13 NC	9.50 (ref) (241.3)	46773	\$695.00	46743	\$2,295.00	46759	\$2,895.00
1000 lb (453.6 kg)	2.68 (68.1)	2.68 (68.1)	5/8-11 NC	9.50 (ref) (241.3)	46774	\$695.00	46744	\$2,295.00	46760	\$2,895.00
2500 lb (1134.0 kg)	2.68 (68.1)	2.68 (68.1)	5/8-11 NC	9.50 (ref) (241.3)	46775	\$695.00	46745	\$2,295.00	46761	\$2,895.00
2500 lb (1134.0 kg)	2.68 (68.1)	2.68 (68.1)	3/4-10 NC	9.50 (ref) (241.3)	46776	\$695.00	46746	\$2,295.00	46762	\$2,895.00
3000 lb (1360.8 kg)	3.37 (85.6)	3.37 (85.6)	3/4-10 NC	12.25 (ref) (311.2)	46777	\$745.00	46747	\$2,445.00	46763	\$3,095.00
5000 lb (2268.0 kg)	3.37 (85.6)	3.37 (85.6)	3/4-10 NC	12.25 (ref) (311.2)	46778	\$1,195.00	46748	\$3,795.00	46764	\$4,995.00

* Load Rating is per module

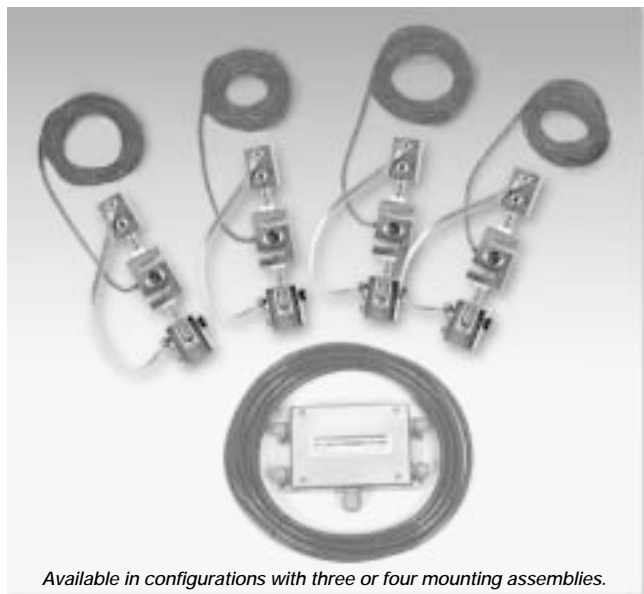
USA: 800-472-6703 • Canada/Mexico: 800-321-6703 • International: 715-234-9171

Prices & Specifications subject to change without notice

Weigh Modules • Tank and Hopper Kits

ITCM HE - Stainless Steel, Welded Seal

NTEP Approved Isolated Tension Cell Modules



Available in configurations with three or four mounting assemblies.

Complete Kit Includes:

- 3 or 4 ITCM assemblies with RL20001HE Stainless Steel, Welded Seal NTEP-certified S-Beam load cells
- 1 EL604STA NEMA 4X stainless steel signal trim junction box
- 25' of our Hostile Environment EL147HE SURVIVOR® load cell cable

The ITCM Series utilizes several Rice Lake Weighing Systems components to provide an unmatched level of performance in tank and hopper weighing applications and mechanical scale conversions. The ITCM HE incorporates clevis and unique rod end ball joint assemblies to reduce the overall length to less than half of the traditional tension cell mounts, while providing correct load alignment. In addition, the load cell is completely electrically isolated* from stray currents, which are a major cause of load cell failure. To complete the design, a bonding strap connects the two clevis assemblies to further provide safety to your load cells.

Load Cell Certifications:



APPLICATIONS:

- Suspended hoppers and tanks
- Mechanical scale conversions
- Use as a single module or in multiples

STANDARD FEATURES:

- Capacities (per module): 500-5,000 lb (226.8-2268.0 kg)
- Clevis mounts with nylon insulating washers
- Teflon®-lined rod end ball joints*
- Load cell is completely isolated from stray currents*
- Bonding strap provides alternative path to ground
- Complete package for ease of installation
- Provides correct load-cell loading even in difficult installations
- Lower overall length compared to other isolated tension assemblies

Module with
RL20001HE S-Beam
load cell. Refer to
page 100 for load
cell specifications.



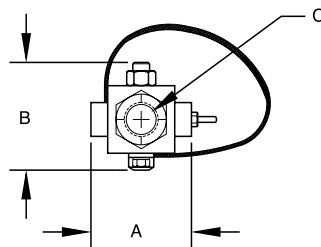
Important: Read "Load Cell Mounting Hardware Safety Guidelines" on page 367.

* Excluding 20,000 lb (9071.9 kg) capacity

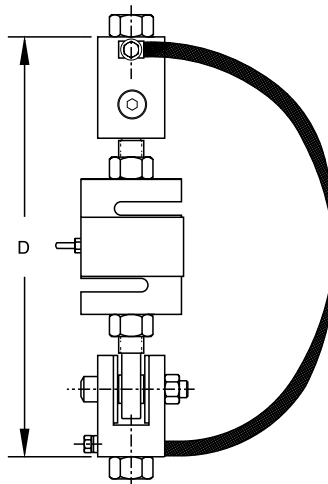
Teflon is a registered trademark of E.I. DuPont

ITCM HE Specifications

**Complete Kit!
Compare
& Save!**



**NEW
LOWER
PRICES**



Weigh Modules

ITCM HE ORDER INFORMATION

* LOAD RATING (LOAD CELL CAPACITY)	DIMENSIONS - INCHES (MILLIMETERS)				Single Module		3-Module Kits		4-Module Kits	
	A	B	C	D	Part #	Suggested List Price	Part #	Suggested List Price	Part #	Suggested List Price
500 lb (226.8 kg)	2.68 (68.1)	2.68 (68.1)	1/2-13 NC	9.50 (ref) (241.3)	46599	\$880.00	46561	\$2,995.00	46580	\$3,775.00
500 lb (226.8 kg)	2.68 (68.1)	2.68 (68.1)	5/8-11 NC	9.50 (ref) (241.3)	46600	\$880.00	46562	\$2,995.00	46581	\$3,775.00
500 lb (226.8 kg)	2.68 (68.1)	2.68 (68.1)	3/4-10 NC	9.50 (ref) (241.3)	46601	\$880.00	46563	\$2,995.00	46582	\$3,775.00
750 lb (340.2 kg)	2.68 (68.1)	2.68 (68.1)	1/2-13 NC	9.50 (ref) (241.3)	46602	\$980.00	46564	\$3,195.00	46583	\$4,185.00
750 lb (340.2 kg)	2.68 (68.1)	2.68 (68.1)	5/8-11 NC	9.50 (ref) (241.3)	46603	\$980.00	46565	\$3,195.00	46584	\$4,185.00
750 lb (340.2 kg)	2.68 (68.1)	2.68 (68.1)	3/4-10 NC	9.50 (ref) (241.3)	46604	\$980.00	46566	\$3,195.00	46585	\$4,185.00
1000 lb (453.6 kg)	2.68 (68.1)	2.68 (68.1)	1/2-13 NC	9.50 (ref) (241.3)	46605	\$980.00	46567	\$3,195.00	46586	\$4,185.00
1000 lb (453.6 kg)	2.68 (68.1)	2.68 (68.1)	5/8-11 NC	9.50 (ref) (241.3)	46606	\$980.00	46568	\$3,195.00	46587	\$4,185.00
1000 lb (453.6 kg)	2.68 (68.1)	2.68 (68.1)	3/4-10 NC	9.50 (ref) (241.3)	46607	\$980.00	46569	\$3,195.00	46588	\$4,185.00
1500 lb (680.4 kg)	2.68 (68.1)	2.68 (68.1)	1/2-13 NC	9.50 (ref) (241.3)	46608	\$980.00	46570	\$3,195.00	46589	\$4,185.00
1500 lb (680.4 kg)	2.68 (68.1)	2.68 (68.1)	5/8-11 NC	9.50 (ref) (241.3)	46609	\$980.00	46571	\$3,195.00	46590	\$4,185.00
1500 lb (680.4 kg)	2.68 (68.1)	2.68 (68.1)	3/4-10 NC	9.50 (ref) (241.3)	46610	\$980.00	46572	\$3,195.00	46591	\$4,185.00
2000 lb (907.2 kg)	2.68 (68.1)	2.68 (68.1)	1/2-13 NC	9.50 (ref) (241.3)	46611	\$980.00	46573	\$3,195.00	46592	\$4,185.00
2000 lb (907.2 kg)	2.68 (68.1)	2.68 (68.1)	5/8-11 NC	9.50 (ref) (241.3)	46612	\$980.00	46574	\$3,195.00	46593	\$4,185.00
2000 lb (907.2 kg)	2.68 (68.1)	2.68 (68.1)	3/4-10 NC	9.50 (ref) (241.3)	46613	\$980.00	46575	\$3,195.00	46594	\$4,185.00
2500 lb (1134.0 kg)	2.68 (68.1)	2.68 (68.1)	5/8-11 NC	9.50 (ref) (241.3)	46614	\$980.00	46576	\$3,195.00	46595	\$4,185.00
2500 lb (1134.0 kg)	2.68 (68.1)	2.68 (68.1)	3/4-10 NC	9.50 (ref) (241.3)	46615	\$980.00	46577	\$3,195.00	46596	\$4,185.00
3000 lb (1360.8 kg)	3.37 (85.6)	3.37 (85.6)	3/4-10 NC	12.25 (ref) (311.2)	46616	\$980.00	46578	\$3,195.00	46597	\$4,185.00
5000 lb (2268.0 kg)	3.37 (85.6)	3.37 (85.6)	3/4-10 NC	12.25 (ref) (311.2)	46617	\$1,420.00	46579	\$4,525.00	46598	\$5,945.00

* Load Rating is per module

USA: 800-472-6703 • Canada/Mexico: 800-321-6703 • International: 715-234-9171

Prices & Specifications subject to change without notice

Weigh Modules • Tank and Hopper Kits

RL50210 TA

50-500 lb Capacity Mini Tank Weighing Module, Rice Lake Weighing Systems/Sensortronics



Available in configurations with three or four mounting assemblies.

Complete Kit Includes:

- 1 EL604STA NEMA 4X stainless steel signal trim junction box
- 3 or 4 RL50210 cantilever beam load cells (50-250 lb models)
- 3 or 4 RL30000 single ended beam load cells (500 lb models)
- 3 or 4 neoprene isolation/compression mounts
- 25' of our Hostile Environment EL147HE SURVIVOR® load cell cable

The RL50210 TA Weigh Module Kit provides a cost-effective alternative for your customers' low-range weighing needs. A variety of features makes this kit easy to install and an exceptional choice for various indoor weighing applications where checking requirements are low. Environmentally protected load cells, neoprene isolation/compression mounts and other Rice Lake Weighing Systems components are the keys to this module's outstanding performance.

Load Cell Certification:



Module with RL50210 or RL50210SS cantilever beam load cell; capacities (per module): 50 lb (22.7 kg), 100 lb (45.4 kg), 150 lb (68.0 kg) and 250 lb (113.4 kg). Refer to page 120 or 121 for load cell specifications. 500 lb model features RL30000 single ended beam load cell; refer to page 102 for load cell specifications.



APPLICATIONS:

- Small tanks and hoppers
- Conveyor/In-motion weighing
- Small platform scales where shock loading may be a problem

STANDARD FEATURES:

- Zinc plated, mild steel modules
- Lower weighing ranges from 50-500 lb (22.7-226.8 kg) per module
- Environmentally protected load cells
- Neoprene isolation/compression mounts allow for minor misalignment, thermal expansion and shock absorption
- Overload stop for 500 lb (226.8 kg) modules provides durability

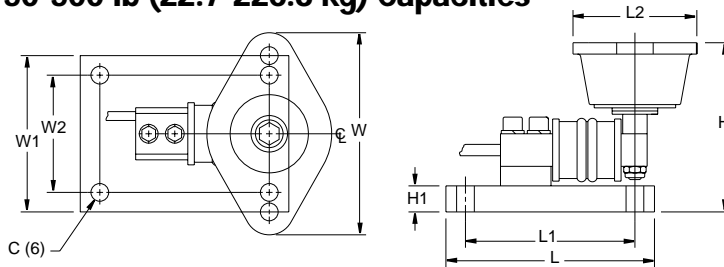
OPTIONAL FEATURES:

- Stainless steel modules available in 50, 100, 150, 250, and 500 lb (22.7, 45.4, 68.0, 113.4, 226.8 kg) capacity with RL50210SS and RL39123 stainless steel load cells or Sensortronics 65023 SS load cells
- 65059 kits available with Sensortronics 60040 load cells, capacities: 50-250 lb (22.7-113.4 kg) or 65023 load cells, capacity: 500 lb (226.8 kg)

RL50210 TA Specifications

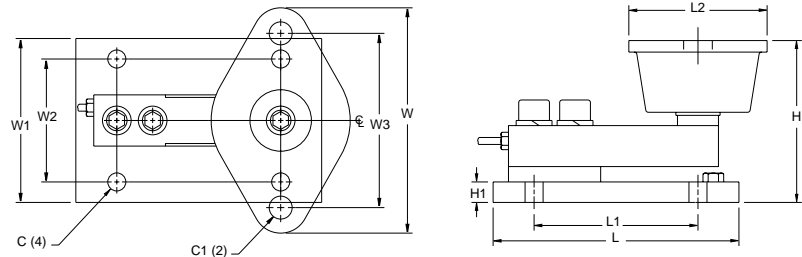
**Complete Kit!
Compare
& Save!**

50-500 lb (22.7-226.8 kg) Capacities



**STAINLESS
UPGRADE
NOW
AVAILABLE**

50-250 lb (22.7-113.4 kg)



500 lb (226.8 kg)

RATED CAPACITY	C	C1	H	H1	L	L1	L2	W	W1	W2	W3
lb/inches											
50-250	.34	—	3.13	.50	4.00	3.25	2.38	3.88	3.00	2.25	—
500	.44	.56	3.88	.50	6.00	4.00	3.38	5.50	4.00	3.00	4.13
kg/millimeters											
22.7-113.4	8.6	—	79.5	12.7	101.6	82.6	60.5	98.6	76.2	57.2	—
226.8	11.2	14.2	98.6	12.7	152.4	101.6	85.9	139.7	101.6	76.2	104.9

RL50210 TA RLWS ORDER INFORMATION

*Load Rating (Load Cell Capacity)	Part #	Suggested List Price
Mild Steel Single Module (Includes Load Cell):		
50 lb (22.7 kg)	17844	\$395.00
100 lb (45.4 kg)	17845	\$395.00
150 lb (68.0 kg)	17846	\$395.00
250 lb (113.4 kg)	17847	\$395.00
500 lb (226.8 kg)	17848	\$525.00
Mild Steel 3-Module Kit:		
50 lb (22.7 kg)	18051	\$1,370.00
100 lb (45.4 kg)	18052	\$1,370.00
150 lb (68.0 kg)	18053	\$1,370.00
250 lb (113.4 kg)	18054	\$1,370.00
500 lb (226.8 kg)	18055	\$1,775.00
Mild Steel 4-Module Kit:		
50 lb (22.7 kg)	18057	\$1,760.00
100 lb (45.4 kg)	18058	\$1,760.00
150 lb (68.0 kg)	18059	\$1,760.00
250 lb (113.4 kg)	18060	\$1,760.00
500 lb (226.8 kg)	18061	\$2,250.00

Stainless Steel Single Module (Includes Load Cell):		
50 lb (22.7 kg)	63033	\$610.00
100 lb (45.4 kg)	63034	\$610.00
150 lb (68.0 kg)	63035	\$610.00
250 lb (113.4 kg)	63036	\$610.00
500 lb (226.8 kg)	17954	\$610.00

Stainless Steel 3-Module Kit:		
500 lb (226.8 kg)	30394	\$2,020.00

Stainless Steel 4-Module Kit:		
500 lb (226.8 kg)	30393	\$2,650.00

*Load Rating is per module.

65059 SENSORTRONICS ORDER INFORMATION

*Load Rating (Load Cell Capacity)	Part #	Suggested List Price
Mild Steel Single Module (Includes Load Cell):		
50 lb (22.7 kg)	17825	\$395.00
100 lb (45.4 kg)	17826	\$395.00
150 lb (68.0 kg)	17827	\$395.00
250 lb (113.4 kg)	17828	\$395.00
500 lb (226.8 kg)	17829	\$525.00
Mild Steel 3-Module Kit:		
50 lb (22.7 kg)	18063	\$1,370.00
100 lb (45.4 kg)	18064	\$1,370.00
150 lb (68.0 kg)	18065	\$1,370.00
250 lb (113.4 kg)	18066	\$1,370.00
500 lb (226.8 kg)	18067	\$1,775.00
Mild Steel 4-Module Kit:		
50 lb (22.7 kg)	18069	\$1,760.00
100 lb (45.4 kg)	18070	\$1,760.00
150 lb (68.0 kg)	18071	\$1,760.00
250 lb (113.4 kg)	18072	\$1,760.00
500 lb (226.8 kg)	18073	\$2,250.00

Stainless Steel Single Module (Includes Load Cell):		
500 lb (226.8 kg)	17950	\$610.00

Stainless Steel 3-Module Kit:		
500 lb (226.8 kg)	30392	\$2,020.00

Stainless Steel 4-Module Kit:		
500 lb (226.8 kg)	30391	\$2,650.00

Weigh Modules • Tank and Hopper Kits

RL50210 TA

1000-2500 lb Capacity Mini Tank Weighing Module, Rice Lake Weighing Systems/Sensortronics



Available in configurations with three or four mounting assemblies.

The RL50210 TA Weigh Module Kit provides a cost-effective alternative for your customers' medium-range weighing needs. A variety of features makes this kit easy to install and an exceptional choice for various indoor weighing applications where checking requirements are low. Environmentally protected load cells, neoprene isolation/compression mounts and other Rice Lake Weighing Systems components are the keys to this module's performance.

Load Cell Certifications:



Module with RL30000 single-ended
shear beam load cell; capacities
(per module): NTEP-certified 1000 lb
(453.6 kg) load cell shown.
Refer to page 102 for load
cell specifications.



Complete Kit Includes:

- 1 EL604STA NEMA 4X stainless steel signal trim junction box
- 3 or 4 RL30000 shear beam load cells
- 3 or 4 neoprene isolation/compression mounts
- 25' of our Hostile Environment EL147HE SURVIVOR® load cell cable

APPLICATIONS:

- Small tanks and hoppers
- Conveyor/In-motion weighing
- Small platform scales where shock loading may be a problem

STANDARD FEATURES:

- NTEP-certified load cells (alloy steel only), 1:5000d, Class III Multiple Cell
- Zinc plated, mild steel assemblies
- Medium weighing ranges from 1000-2500 lb (453.6-1134.0 kg) per module
- Environmentally protected load cells
- Neoprene isolation/compression mounts allow for minor misalignment, thermal expansion and shock absorption
- Overload stop provides durability
- RL50210 stainless steel mounts use RL35023S stainless steel load cells, capacities: 1000-2500 lb (453.6-1134.0 kg) NTEP cells.
- 65059 stainless steel mounts use Sensortronics 65023 stainless steel load cells.

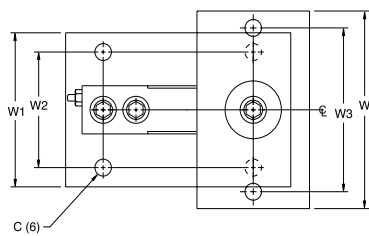
OPTIONAL FEATURES:

- Welded stainless steel cells available in stainless steel mounts. Consult factory.

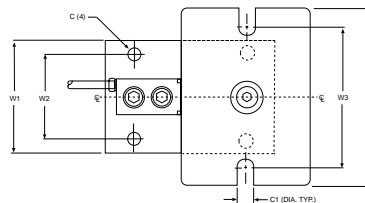
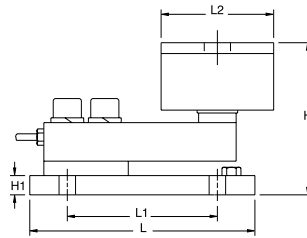
RL50210 TA Specifications

**Complete Kit!
Compare
& Save!**

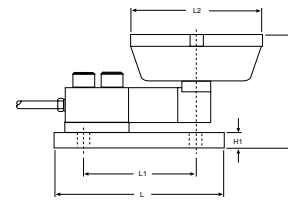
1000-2500 lb (453.6-1134.0 kg) Capacities



1000 lb (453.6 kg)



2000 lb-2500 lb (907.2 kg-1134.0 kg)



RATED CAPACITY	DIMENSIONS										
	C	C1	H	H1	L	L1	L2	W	W1	W2	W3
lb/inches											
1000	.44	—	4.00	.50	6.00	4.00	3.00	5.13	4.00	3.00	4.13
2000-2500	.44	.56	4.00	.50	6.00	4.00	4.62	6.25	4.00	3.00	5.00
kg/millimeters											
453.6	11.2	—	101.6	12.7	152.4	101.6	76.2	130.3	101.6	76.2	104.9
907.2-1134.0	11.2	14.2	101.6	12.7	152.4	101.6	117.3	158.8	101.6	76.2	127.0

RL50210 TA ORDER INFORMATION

* Load Rating (Load Cell Capacity)	Part #	Suggested List Price
Mild Steel Single Module (Includes Load Cell):		
1000 lb (453.6 kg)	17849	\$525.00
2000 lb (907.2 kg)	17948	\$525.00
2500 lb (1134.0 kg)	17949	\$525.00
Mild Steel 3-Module Kit:		
1000 lb (453.6 kg)	18056	\$1,775.00
2000 lb (907.2 kg)	30398	\$1,775.00
2500 lb (1134.0 kg)	30396	\$1,775.00
Mild Steel 4-Module Kit:		
1000 lb (453.6 kg)	18062	\$2,275.00
2000 lb (907.2 kg)	30397	\$2,275.00
2500 lb (1134.0 kg)	30395	\$2,275.00
Stainless Steel Single Module (Includes Load Cell):		
1000 lb (453.6 kg)	17955	\$610.00
2000 lb (907.2 kg)	17956	\$610.00
2500 lb (1134.0 kg)	17957	\$610.00
Stainless Steel 3-Module Kit:		
1000 lb (453.6 kg)	30404	\$2,020.00
2000 lb (907.2 kg)	30402	\$2,020.00
2500 lb (1134.0 kg)	30400	\$2,020.00
Stainless Steel 4-Module Kit:		
1000 lb (453.6 kg)	30403	\$2,650.00
2000 lb (907.2 kg)	30401	\$2,650.00
2500 lb (1134.0 kg)	30399	\$2,650.00

65059 SENSORTRONICS ORDER INFORMATION

* Load Rating (Load Cell Capacity)	Part #	Suggested List Price
Mild Steel Single Module (Includes Load Cell):		
1000 lb (453.6 kg)	17830	\$525.00
2000 lb (907.2 kg)	17946	\$525.00
2500 lb (1134.0 kg)	17947	\$525.00
Mild Steel 3-Module Kit:		
1000 lb (453.6 kg)	18068	\$1,775.00
2000 lb (907.2 kg)	30413	\$1,775.00
2500 lb (1134.0 kg)	30412	\$1,775.00
Mild Steel 4-Module Kit:		
1000 lb (453.6 kg)	18074	\$2,275.00
2000 lb (907.2 kg)	30414	\$2,275.00
2500 lb (1134.0 kg)	30411	\$2,275.00
Stainless Steel Single Module (Includes Load Cell):		
1000 lb (453.6 kg)	17951	\$610.00
2000 lb (907.2 kg)	17952	\$610.00
2500 lb (1134.0 kg)	17953	\$610.00
Stainless Steel 3-Module Kit:		
1000 lb (453.6 kg)	30410	\$2,020.00
2000 lb (907.2 kg)	30408	\$2,020.00
2500 lb (1134.0 kg)	30406	\$2,020.00
Stainless Steel 4-Module Kit:		
1000 lb (453.6 kg)	30409	\$2,650.00
2000 lb (907.2 kg)	30407	\$2,650.00
2500 lb (1134.0 kg)	30405	\$2,650.00

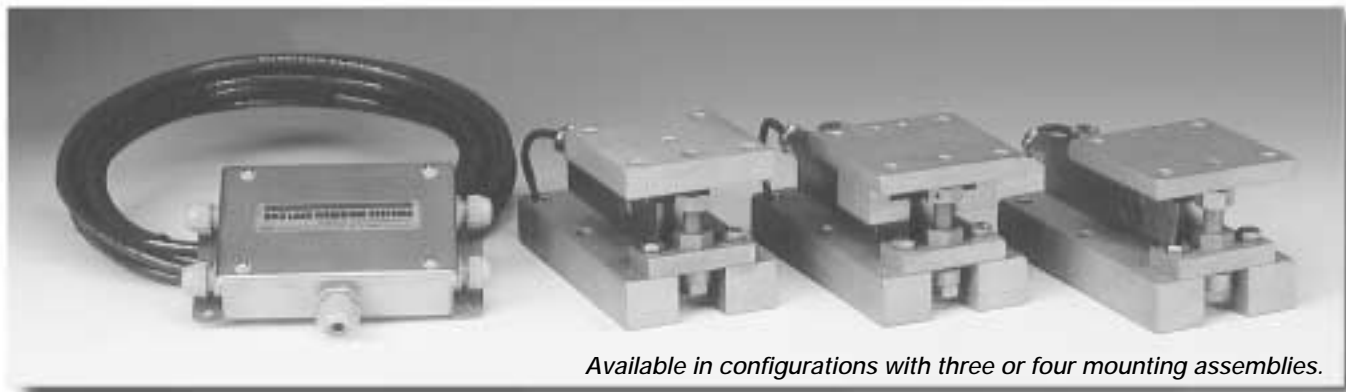
* Load Rating is per module.

USA: 800-472-6703 • Canada/Mexico: 800-321-6703 • International: 715-234-9171

Prices & Specifications subject to change without notice

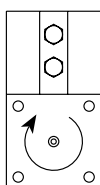
Weigh Modules • Tank and Hopper Kits

Paramounts® EP (Environmentally-Protected Load Cells) Mild Steel, Light- to Medium-Capacity Tank Weighing Systems

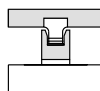


The Paramounts EP system offers all the design advantages of the Paramounts system in applications where the extensive sealing of the SB4 load cell is not necessary. Paramounts EP provides a low-cost alternative for the superior mechanical loading system found in the standard Paramounts. Economy and performance are in one complete weighing system.

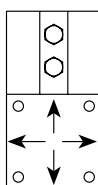
Load Cell Certifications:



A: FIXED PIN



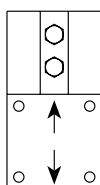
Fixed-Pin Mount



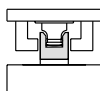
B: FREE SLIDING



Free-Sliding Mount



C: SIDE STOP



Side-Stop Mount

Free-Sliding Module with Flintec SB5 bending beam load cell. Refer to page 200 for load cell specifications.



Complete Kit Includes:

- 1 EL604ETA NEMA 4X stainless steel excitation trim junction box
- 1 fixed-pin module, 1 side-stop module, and 1 or 2 free-sliding assemblies. Each module is complete with a FLINTEC SB5 NTEP-certified 1:5000d, Class III, stainless steel environmentally-protected load cell
- 25' of our Hostile Environment EL147HE SURVIVOR® load cell cable

APPLICATIONS:

- Light- to medium-capacity tanks and hoppers
- High-vibration mixers and blenders
- Process measurement and control

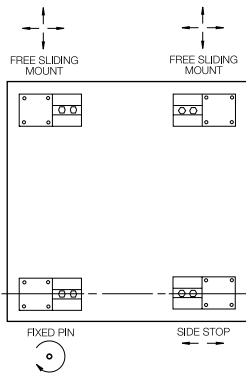
STANDARD FEATURES:

- Capacities (per module): 1125 lb-22,500 lb (1 kN/102.1 kg-100 kN/10,205.9 kg)
- NTEP-certified load cells
- Unique design allows for thermal expansion/contraction
- Jacking screw allows empty vessel to be lifted clear of load cell for maintenance
- Unique blind load hole eliminates unwanted side and eccentric loads
- Vessel is free to slide laterally on Teflon®-coated surfaces
- Load cell outputs are matched to $\pm 0.07\%$ allowing replacement without further calibration

Teflon is a registered trademark of E.I. DuPont

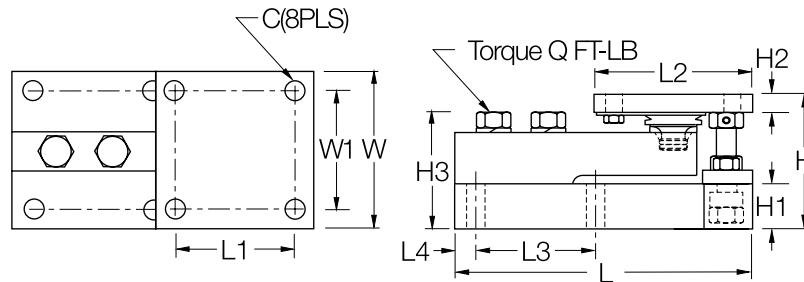
Paramounts EP Specifications

**Complete Kit!
Compare
& Save!**



VESSEL ARRANGEMENT

When arranged as illustrated, the vessel is fixed at one corner but is able to slide freely as indicated. This ensures that there is minimal side loading on the cells and at the same time the vessel is self-checking. The unique, patented blind load hole technology used in these mounts introduces the load at the neutral axis of the load cell which helps minimize the effects of side loads.



RATED CAPACITY	C	H	H1	*H2	**H2	H3	L	L1	L2	L3	L4	W	W1	Q (FT-LB)
lb/inches														
1125 - 5200 (5 - 23KN)	.437	3.58	1.25	.50	.75	3.06	7.51	3.00	4.00	3.00	.50	4.00	3.00	65
11,250 (50KN)	.562	4.66	1.50	.62	1.00	4.09	9.19	3.87	5.00	3.87	.56	5.00	3.87	295
22,500 (100KN)	.688	6.41	2.00	.75	1.25	5.73	11.46	4.75	6.00	4.75	.69	6.00	4.75	515
kg/millimeters														
510.8 - 2360	11.1	90.9	31.8	12.7	19.1	77.7	190.8	76.2	101.6	76.2	12.7	101.6	76.2	
5107.5	14.3	118.4	38.1	15.7	25.4	103.9	233.4	98.3	127.0	98.3	14.2	127.0	98.3	
10,215.0	17.5	162.8	50.8	19.1	31.8	145.5	291.1	120.7	152.4	120.7	17.5	152.4	120.7	

KN = Kilonewtons. 1 KN = 224.8089 lb

*Side Stop and Free Sliding units.

**Fixed Pin units.

PARAMOUNTS EP MILD STEEL ORDER INFORMATION

Load Rating (per module)	Part #	Suggested List Price
NTEP 3-Module Kits:		
1125 lb (5KN/510.8 kg)	33683	\$1,995.00
2250 lb (10KN/1021.5 kg)	33682	\$1,995.00
4500 lb (20KN/2041.2 kg)	33681	\$1,995.00
11,250 lb (50KN/5107.5 kg)	33680	\$2,195.00
NTEP 4-Module Kits:		
1125 lb (5KN/510.8 kg)	33678	\$2,665.00
2250 lb (10KN/1021.5 kg)	33677	\$2,665.00
4500 lb (20KN/2041.2 kg)	33676	\$2,665.00
11,250 lb (50KN/5107.5 kg)	33675	\$3,395.00
Non-NTEP 3-Module Kit:		
22,500 lb (100KN/10,205.8 kg) .	33679	\$2,925.00
Non-NTEP 4-Module Kit:		
22,500 lb (100KN/10,215.0 kg) .	33674	\$4,150.00

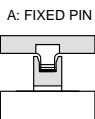
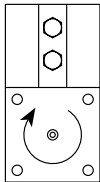
Weigh Modules • Tank and Hopper Kits

Paramounts® HS (Hermetically Sealed Load Cells) Mild Steel, Light- to Medium-Capacity Tank Weighing Systems

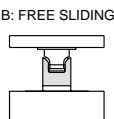
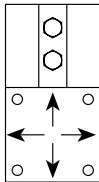


The Paramounts tank weighing system consists of one fixed-pin mount which allows only the top plate to rotate, one side-stop mount which allows the top plate to slide along the cell only, and one or more free-sliding mount(s) which allow the top plate to slide freely in all directions. This system provides self checking in applications of extreme temperature fluctuations and vibration while maintaining unparalleled system accuracy.

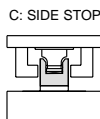
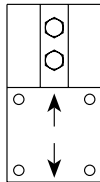
Load Cell Certifications:



Fixed-Pin Mount



Free-Sliding Mount



Side-Stop Mount

Free-Sliding Module with Flintec
SB4 bending beam load cell.
Refer to page 199 for load
cell specifications.



Complete Kit Includes:

- 1 EL604ETA NEMA 4X stainless steel excitation trim junction box
- 1 fixed-pin module, 1 side-stop module, and 1 or 2 free-sliding assemblies. Each module is complete with a FLINTEC SB4 or SB10 stainless steel hermetically-sealed load cell
- 25' of our Hostile Environment EL147HE SURVIVOR® load cell cable

APPLICATIONS:

- Light- to medium-capacity tanks and hoppers
- High-vibration mixers and blenders
- Process measurement and control

STANDARD FEATURES:

- Capacities (per module): 225 lb-22,500 lb (1KN/102.1 kg-100KN/10,205.9 kg)
- Unique design allows for thermal expansion/contraction
- Jacking screw allows empty vessel to be lifted clear of load cell for maintenance
- Unique blind load hole eliminates unwanted side and eccentric loads
- Vessel is free to slide laterally on Teflon®-coated surfaces
- Load cell outputs are matched to $\pm 0.07\%$, allowing replacement without further calibration

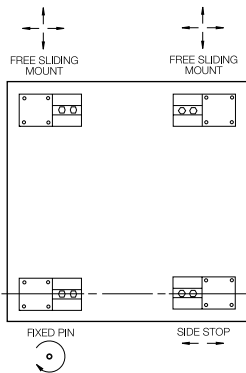
OPTIONAL FEATURES:

- NTEP-certified load cells available: capacities 1125-11,250 lb

Teflon is a registered trademark of E.I. DuPont

Paramounts HS Specifications

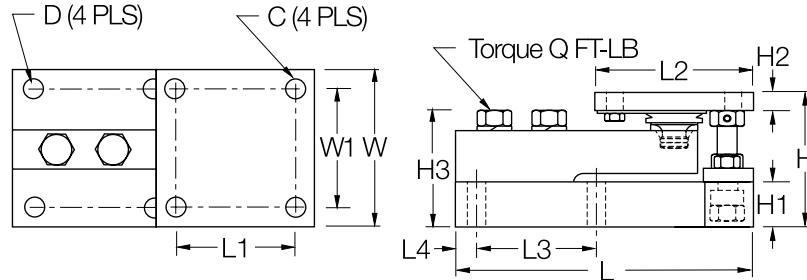
**Complete Kit!
Compare
& Save!**



**Prices
Reduced!**

VESSEL ARRANGEMENT

When arranged as illustrated, the vessel is fixed at one corner but is able to slide freely as indicated. This ensures that there is minimal side loading on the cells and at the same time the vessel is self-checking. The unique, patented blind load hole technology used in these mounts introduces the load at the neutral axis of the load cell which helps minimize the effects of side loads.



RATED CAPACITY		C	D	H	H1	*H2	**H2	H3	L	L1	L2	L3	L4	W	W1	Q (FT-LB)
lb/inches																
225 - 520 (1 - 2.3KN)		.375	.437	3.49	1.00	.50	.75	2.98	7.51	3.00	4.00	3.00	.50	4.00	3.00	65
1125 - 5200 (5 - 23KN)		.437	.437	3.58	1.25	.50	.75	3.06	7.51	3.00	4.00	3.00	.50	4.00	3.00	65
11,250 (50KN)		.562	.562	4.66	1.50	.62	1.00	4.09	9.19	3.87	5.00	3.87	.56	5.00	3.87	295
22,500 (100KN)		.688	.688	6.41	2.00	.75	1.25	5.73	11.46	4.75	6.00	4.75	.69	6.00	4.75	515
kg/millimeters																
102.2 - 236.1		9.5	11.1	88.6	25.4	12.7	19.1	75.7	190.8	76.2	101.6	76.2	12.7	101.6	76.2	
510.8 - 2360		11.1	11.1	90.9	31.8	12.7	19.1	77.7	190.8	76.2	101.6	76.2	12.7	101.6	76.2	
5107.5		14.3	14.3	118.4	38.1	15.7	25.4	103.9	233.4	98.3	127.0	98.3	14.2	127.0	98.3	
10,215.0		17.5	17.5	162.8	50.8	19.1	31.8	145.5	291.1	120.7	152.4	120.7	17.5	152.4	120.7	

KN = Kilonewtons. 1 KN = 224.8089 lb

*Side Stop and Free Sliding units.

**Fixed Pin units.

PARAMOUNTS HS MILD STEEL ORDER INFORMATION

Load Rating (per module)	Part #	Suggested List Price
NTEP 3-Module Kits		
1125 lb (5KN/510.8 kg)	29871	\$2,895.00
2250 lb (10KN/1021.5 kg)	29872	\$2,895.00
5200 lb (23KN/2360.8 kg)	29873	\$2,895.00
11,250 lb (50KN/5107.5 kg)	29874	\$3,510.00
NTEP 4-Module Kits		
1125 lb (5KN/510.8 kg)	29875	\$3,795.00
2250 lb (10KN/1021.5 kg)	29876	\$3,795.00
5200 lb (23KN/2360.8 kg)	29877	\$3,795.00
11,250 lb (50KN/5107.5 kg)	29878	\$4,595.00
Non-NTEP 3-Module Kits		
225 lb (1KN/102.2 kg)	38201	\$2,695.00
520 lb (2.3KN/236.1 kg)	38205	\$2,695.00
1125 lb (5KN/510.8 kg)	17977	\$2,695.00
2250 lb (10KN/1021.5 kg)	17978	\$2,695.00
5200 lb (23KN/2360.8 kg)	17979	\$2,695.00
11,250 lb (50KN/5107.5 kg)	17980	\$3,145.00
22,500 lb (100KN/10,215.0 kg)	17981	\$3,800.00
Non-NTEP 4-Module Kits		
225 lb (1KN/102.2 kg)	38202	\$3,525.00
520 lb (2.3KN/236.1 kg)	38206	\$3,525.00
1125 lb (5KN/510.8 kg)	17984	\$3,525.00
2250 lb (10KN/1021.5 kg)	17985	\$3,525.00
5200 lb (23KN/2360.8 kg)	17986	\$3,525.00
11,250 lb (50KN/5107.5 kg)	17987	\$4,095.00
22,500 lb (100KN/10,215.0 kg)	17988	\$4,975.00

Conduit Adapter suitable for Flintec SB4 load cell:
Part Number: 17703
Sugg. List Price: \$18.00

USA: 800-472-6703 • Canada/Mexico: 800-321-6703 • International: 715-234-9171

Prices & Specifications subject to change without notice

Weigh Modules • Tank and Hopper Kits

RLBTM

Mild Steel/Stainless Steel Weigh Modules



**Does not include load cell.*

The new RLBTM mount was specifically created to take advantage of the improved load introduction accuracy of the ball and cup design. This multi-purpose mount is ideal for both indoor and outdoor applications, and can be used with a variety of single-ended beam load cells. Available in both mild and stainless steel material, this product offers superior accuracy at an affordable price. These assemblies are also quick and easy to install, making the RLBTM the perfect choice for your low-capacity, multi-purpose weighing needs.

APPLICATIONS:

- Light- to medium-capacity tanks and hoppers
- Conveyors

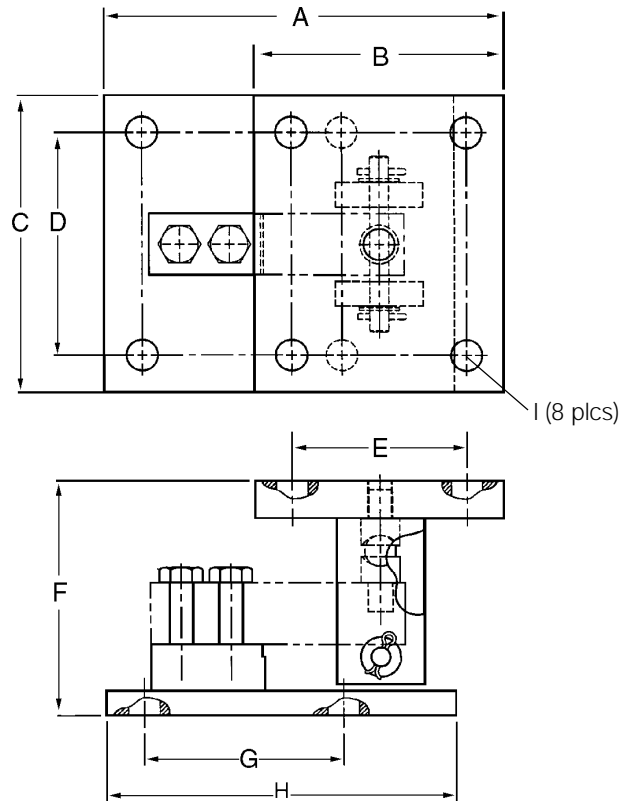
STANDARD FEATURES:

- Capacities (per module): 250 lb - 5,000 lbSE mild steel/1,000 lb-4,000 lb SST
- Zinc Plated mild steel construction or stainless steel
- Ball and cup design
- Self-checking, multi-directional movement
- Load is suspended on ball and cup
- Design incorporates a ball and cup for self centering

RLBTM Specifications

**Complete Kit!
Compare
& Save!**

**NEW
LOWER
PRICES**



Weigh Modules

RATED CAPACITY	DIMENSIONS								
	A	B	C	D	E	F	G	H	I
lb/inches									
250-5000SE	8.00	5.00	6.00	4.50	3.50	4.75	4.00	7.00	.63
kg/millimeters									
113.4/2268.0	203.2	127	152.4	114.3	88.9	120.6	101.6	177.8	16.0

RLBTM MILD STEEL ORDER INFORMATION

*Load Rating (Load Cell Capacity)	Part #	Suggested List Price
Single Modules (Do NOT Include Load Cell)		
250 lb -5,000 lb (113.4-2268.0kg) ...	53059	\$275.00

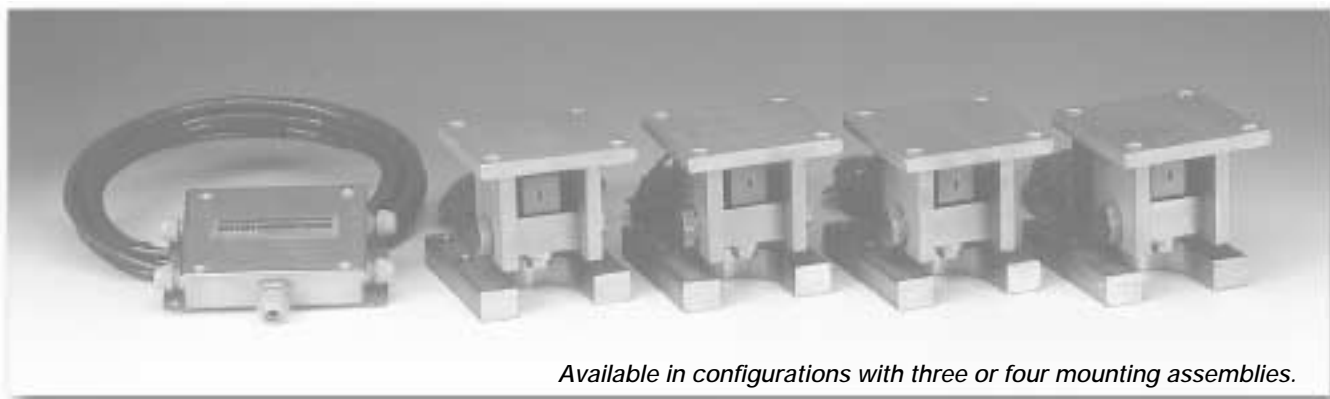
RLBTM STAINLESS STEEL ORDER INFORMATION

*Load Rating (Load Cell Capacity)	Part #	Suggested List Price
Single Modules (Do NOT Include Load Cell)		
1,000-4,000 lb (453.6-1814.4kg)	53066	\$450.00

* Load Rating is per module

Weigh Modules • Tank and Hopper Kits

RL1800 Series Mild Steel/Stainless Steel Weigh Modules



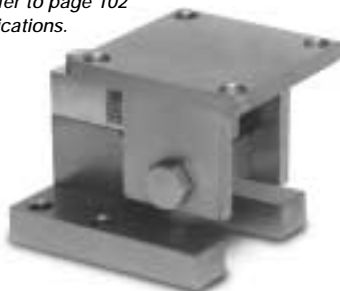
Available in configurations with three or four mounting assemblies.

The RL1800 Series Mounting Assembly Kit utilizes several Rice Lake Weighing Systems components to provide an unmatched level of performance in tank and hopper weighing applications. The RL1800 Series kit is ideally suited for indoor and outdoor process control operations with medium-range capacities. Each module combines multi-directional movement and self-checking capabilities. The RL30000 Series load cells used are NTEP certified in capacities of 1000 lb to 10,000 lb.

Load Cell Certifications:



Module with RL30000 single-ended beam load cell. Refer to page 102 for load cell specifications.



Complete Kit Includes:

- 1 EL604STA NEMA 4X stainless steel signal trim junction box
- 3 or 4 RL1800 mild or stainless steel compression mounts
- 3 or 4 RL30000 single-ended beam load cells
- 25' of our Hostile Environment EL147HE SURVIVOR® load cell cable

APPLICATIONS:

- Conveyors
- Medium-capacity tanks and hoppers

STANDARD FEATURES:

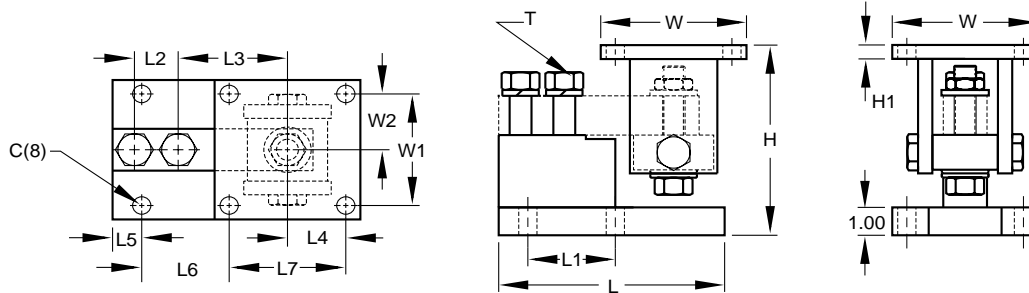
- Capacities (per module): 250-10,000 lb (113.4-4535.9 kg)
- NTEP-certified cells in 1000-10,000 lb (453.6-4535.9 kg) capacities (except 3000 lb [1360.9 kg])
- Zinc plated mild steel construction
- Center-pivoted, tension loading design
- Self-checking, multi-directional movement
- Load is suspended on high-strength bolt instead of wire rope
- Design incorporates spherical washers for self centering

OPTIONAL FEATURES:

- Modules available in 304 stainless steel construction with stainless steel RL35023S NTEP certified load cells, capacities of 1000-10,000 lb (453.6-4535.9 kg)

RL1800 Series Specifications

**Complete Kit!
Compare
& Save!**



**PRICES
REDUCED**

RATED CAPACITY	C	H Min/Max	H1	L	L1	L2	L3	L4	L5	L6	L7	T	W	W1	W2
Mild Steel Construction															
lb/inches															
250-5000SE	.62	5.25/5.56	.50	6.00	2.00	1.00	3.00	2.00	.68	1.94	4.00	1/2-13 UNC	5.00	4.00	2.00
5000LE-10,000	.62	6.12/6.62	.50	7.75	3.00	1.50	3.75	2.00	1.03	2.97	4.00	3/4-10 UNC	5.00	4.00	2.00
kg/millimeters															
113.4-2268.0	15.8	133.4/141.2	12.7	152.4	50.8	25.4	76.2	50.8	17.3	49.3	101.6	1/2-13 UNC	127.0	101.6	50.8
2268.0-4535.9	15.8	155.4/168.1	12.7	196.9	76.2	38.1	95.3	50.8	26.2	75.4	101.6	3/4-10 UNC	127.0	101.6	50.8
Stainless Steel Construction															
lb/inches															
1000-4000	.62	5.25/5.56	.50	6.00	2.00	1.00	3.00	2.00	.68	1.94	4.00	1/2-13 UNC	5.00	4.00	2.00
5000-10,000	.62	6.12/6.62	.50	7.75	3.00	1.50	3.75	2.00	1.03	2.97	4.00	3/4-10 UNC	5.00	4.00	2.00
kg/millimeters															
453.6-1814.4	15.8	133.4/141.2	12.7	152.4	50.8	25.4	76.2	50.8	17.3	49.3	101.6	1/2-13 UNC	127.0	101.6	50.8
2268.0-4535.9	15.8	155.4/168.1	12.7	196.9	76.2	38.1	95.3	50.8	26.2	75.4	101.6	3/4-10 UNC	127.0	101.6	50.8

RL1800 MILD STEEL ORDER INFORMATION

*Load Rating (Load Cell Capacity)	Part #	Suggested List Price
Single Modules (Do NOT include Load Cell)		
250 -5000 lbSE (113.4-2268.0 kg)	17817	\$325.00
5000LE-10,000 lb (2268.0-4535.9 kg)	17819	\$350.00
3-Module Kits		
250 lb (113.4 kg)	18075	\$1,995.00
500 lb (226.8 kg)	18076	\$1,995.00
1000 lb (453.6 kg)	18077	\$1,995.00
2000 lb (907.2 kg)	18078	\$1,995.00
2500 lb (1134.0 kg)	18079	\$1,995.00
3000 lb (1360.8 kg)	18080	\$1,995.00
4000 lb (1814.4 kg)	18081	\$1,995.00
5000 lbSE (2268.0 kg)	18082	\$1,995.00
5000 lbLE (2268.0 kg)	18083	\$2,295.00
10,000 lb (4535.9 kg)	18084	\$2,295.00
4-Module Kits		
250 lb (113.4 kg)	18085	\$2,595.00
500 lb (226.8 kg)	18086	\$2,595.00
1000 lb (453.6 kg)	18087	\$2,595.00
2000 lb (907.2 kg)	18088	\$2,595.00
2500 lb (1134.0 kg)	18089	\$2,595.00
3000 lb (1360.8 kg)	18090	\$2,595.00
4000 lb (1814.4 kg)	18091	\$2,595.00
5000 lbSE (2268.0 kg)	18092	\$2,595.00
5000 lbLE (2268.0 kg)	18093	\$3,195.00
10,000 lb (4535.9 kg)	18094	\$3,195.00

RL1800 STAINLESS STEEL ORDER INFORMATION

*Load Rating (Load Cell Capacity)	Part #	Suggested List Price
Single Modules (Do NOT include Load Cell)		
250-4000 lb (113.4-1814.4 kg)	17818	\$525.00
5000-10,000 lb (2268.0-4535.9 kg)	17820	\$550.00
3-Module Kits		
1000 lb (453.6 kg)	18095	\$2,695.00
2000 lb (907.2 kg)	18096	\$2,695.00
2500 lb (1134.0 kg)	18097	\$2,695.00
4000 lb (1814.4 kg)	18099	\$2,695.00
5000 lb (2268.0 kg)	18100	\$2,925.00
10,000 lb (4535.9 kg)	18101	\$2,925.00
4-Module Kits		
1000 lb (453.6 kg)	18102	\$3,595.00
2000 lb (907.2 kg)	18103	\$3,595.00
2500 lb (1134.0 kg)	18104	\$3,595.00
4000 lb (1814.4 kg)	18106	\$3,595.00
5000 lb (2268.0 kg)	18107	\$3,910.00
10,000 lb (4535.9 kg)	18108	\$3,910.00

SE refers to small envelope.
LE refers to large envelope.

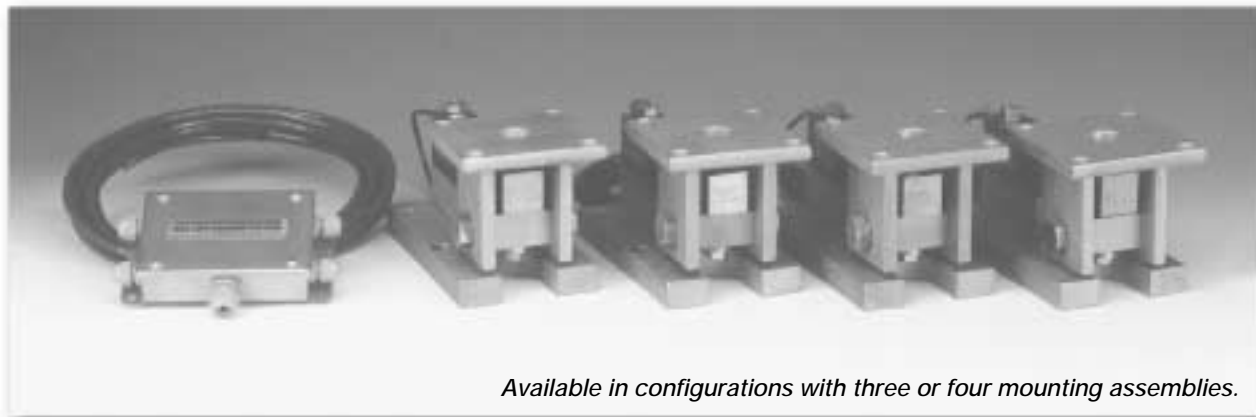
* Load Rating is per module

USA: 800-472-6703 • Canada/Mexico: 800-321-6703 • International: 715-234-9171

Prices & Specifications subject to change without notice

Weigh Modules • Tank and Hopper Kits

RL1900 Series Stainless Steel Weigh Modules



Available in configurations with three or four mounting assemblies.

The RL1900 Series Weigh Module Kit utilizes several Rice Lake Weighing Systems components to provide an unmatched level of performance in tank and hopper weighing applications. The RL1900 kit is ideally suited for tank, hopper and bin weighing operations with medium-range capacities. Each module combines multi-directional movement and self-checking capabilities. The welded seal stainless steel RLSSB load cell withstands high pressure washdown and corrosive environments that may present problems to other cells.

Load Cell Certifications:



Module with hermetically sealed RLSSB single-ended beam load cell. Refer to page 116 for load cell specifications.



Complete Kit Includes:

- 1 EL604STA NEMA 4X stainless steel signal trim junction box
- 3 or 4 RL1900 stainless steel compression mounts
- 3 or 4 RLSSB welded stainless steel single-ended beam load cells
- 25' of our Hostile Environment EL147HE SURVIVOR® load cell cable

APPLICATIONS:

- Medium-capacity tanks, bins and hoppers
- Washdown or corrosive applications

STANDARD FEATURES:

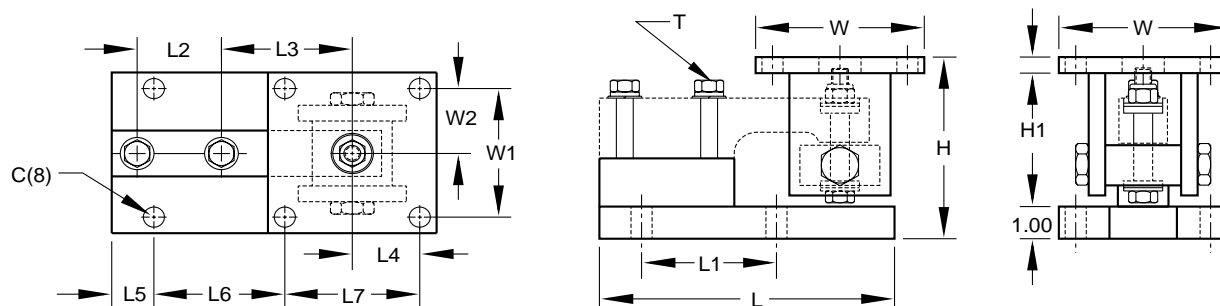
- NTEP-certified load cells, 1:5000d, Class III Single Cell
- Capacities (per module): 1000-10,000 lb (453.6-4535.9 kg)
- 304 stainless steel construction
- Center-pivoted, tension loading design
- Hermetically-sealed stainless steel load cells
- Self-checking, multi-directional movement
- Easy load cell replacement
- Load is suspended on high-strength bolt instead of wire rope
- Design incorporates spherical washers

OPTIONAL FEATURES:

- Also compatible with HBM SB3 load cells
- Also compatible with RTI SSB load cells

RL1900 Series Specifications

**Complete Kit!
Compare
& Save!**



RATED CAPACITY	DIMENSIONS													T	W	W1	W2
	C	H Min/Max	H1	L	L1	L2	L3	L4	L5	L6	L7						
lb/inches																	
1000-5000	.62	5.38/5.62	.50	8.75	4.00	2.50	3.88	2.00	1.12	4.00	4.00	1/2-13 UNC	5.00	4.00	2.00		
10,000	.81	6.88/7.50	1.00	9.75	5.00	2.63	4.88	2.25	1.00	5.00	4.50	3/4-10 UNC	6.00	4.50	2.25		
kg/millimeters																	
453.6-2268.0	15.8	136.7/142.9	12.7	222.3	101.6	63.5	98.6	50.8	28.4	101.6	101.6	1/2-13 UNC	127.0	101.6	50.8		
4535.9	20.6	174.8/190.5	25.4	247.7	127.0	66.8	124.0	57.2	25.4	127.0	114.3	3/4-10 UNC	152.4	114.3	57.2		

RL1900 ORDER INFORMATION

Load Rating (Load Cell Capacity)	Part #	Suggested List Price
Single Modules (Do NOT Include Load Cell)		
1000-5000 lb (453.6-2268.0 kg)	17841	\$495.00
10,000 lb (4535.9 kg)	17843	\$525.00
3-Module Kits		
1000 lb (453.6 kg)	18109	\$3,515.00
2000 lb (907.2 kg)	18110	\$3,515.00
5000 lb (2268.0 kg)	18111	\$3,515.00
10,000 lb (4535.9 kg)	18112	\$3,880.00
4-Module Kits		
1000 lb (453.6 kg)	18113	\$4,595.00
2000 lb (907.2 kg)	18114	\$4,595.00
5000 lb (2268.0 kg)	18115	\$4,595.00
10,000 lb (4535.9 kg)	18116	\$5,040.00

* Load Rating is per module

Weigh Modules • Tank and Hopper Kits

RL2200 Series

Tank, Hopper & Vessel Weighing Assembly, Rice Lake Weighing Systems



Available in configurations with three or four mounting assemblies.

The RL2200 Series mounts are ideal for use in tank, hopper, vessel, and many other applications. The low-profile design allows for economical solutions in a competitive marketplace. This rugged, high-precision mount is designed for easy installation and does not require check rods or other stabilizing hardware. The RL2200 mount has the added feature of self centering, allowing for side loads without sacrificing performance.

Complete Kit Includes:

- 1 EL604STA NEMA 4X stainless steel signal trim junction box
- 3 or 4 RL2200 high-alloy, zinc-plated steel mounting assemblies
- 3 or 4 RL2200 compression disk load cells
- 25' of our Hostile Environment EL147HE SURVIVOR® load cell cable

APPLICATIONS:

- Tank, hopper, or vessel weighing
- Belt or roller conveyors
- Scale platforms and screw feeders

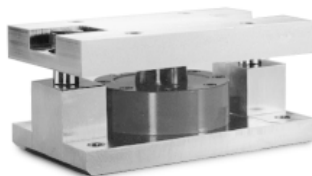
STANDARD FEATURES:

- Capacities: 5000, 10,000, 25,000, 50,000 lb (2268, 4536, 11,340, 22,680 kg)
- Low-profile design
- High 4 mV/V output
- Self-centering in all directions—able to withstand excessive side loads
- Self-checking assembly

OPTIONAL FEATURES:

- Stainless steel construction

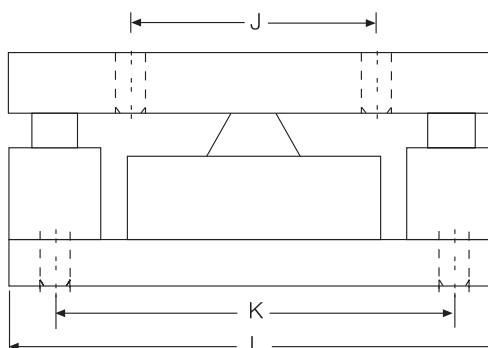
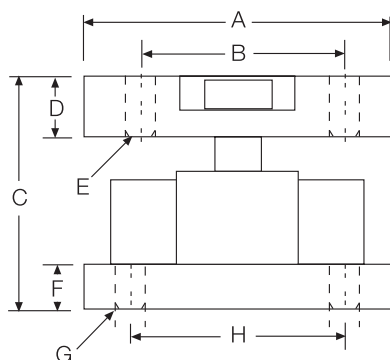
Assembly with integral RL2200 compression disk load cell. See next page for load cell specifications.



RL2200 Series Specifications

**Complete Kit!
Compare
& Save!**

**Low
Profile
Design!**



RATED CAPACITY	DIMENSIONS										
	A	B	C	D	E	F	G	H	J	K	L
lb/inches											
5000-10,000	5.0	3.50	4.00	1.00	.52	1.0	.52	3.50	4.00	6.50	8.0
25,000-50,000	6.0	4.50	4.75	1.25	.78	1.0	.78	4.50	5.00	7.75	10.0
kg/millimeters											
2268-4536	127.0	88.9	101.6	25.4	13.2	19.0	13.2	88.9	101.6	165.1	203.2
11,340-22,679.6	152.4	114.3	120.6	31.7	19.8	25.4	19.8	114.3	127.0	196.8	254.0

LOAD CELL SPECIFICATIONS:

Safe Overload:	150% Full Scale
Full Scale Output:	4.0 mV/V
Rated Excitation:	10 VDC (20 V maximum)
Nonlinearity:	0.05% Full Scale
Hysteresis:	0.03% Full Scale
Temperature:	Compensated range: 15°F to 115°F/-9°C to 46°C
Bridge Resistance:	350 ohms nominal
Insulation Resistance:	5000 megohms
Material/Finish:	High-alloy steel, zinc plated
Seal Type:	Environmentally protected
Cable Length:	30'/9.1m
Cable Color Code:	Red + Excitation Black - Excitation Green + Signal White - Signal
Warranty:	2 years

RL2200 SERIES ORDER INFORMATION

Load Rating	Part #	Suggested List Price
Single Modules		
5000 lb (2268 kg)	45849	\$1,125.00
10,000 lb (4536 kg)	45848	\$1,125.00
25,000 lb (11,340 kg)	45847	\$1,580.00
50,000 lb (22,680 kg)	45846	\$1,580.00
3-Module Kits		
5000 lb (2268 kg)	42811	\$3,575.00
10,000 lb (4536 kg)	42812	\$3,575.00
25,000 lb (11,340 kg)	42813	\$4,940.00
50,000 lb (22,680 kg)	42814	\$4,940.00
4-Module Kits		
5000 lb (2268 kg)	42815	\$4,700.00
10,000 lb (4536 kg)	42816	\$4,700.00
25,000 lb (11,340 kg)	42817	\$6,520.00
50,000 lb (22,680 kg)	42818	\$6,520.00

Weigh Modules

Weigh Modules • Tank and Hopper Kits

RL2200 SS Series

Stainless Steel, Tank, Hopper & Vessel Weighing Assembly, Rice Lake Weighing Systems



Available in configurations with three or four mounting assemblies.

The RL2200 SS Series mounts are ideal for use in tank, hopper, vessel, and many other applications. The low-profile design allows for economical solutions in a competitive marketplace. This rugged, high-precision mount is designed for easy installation and does not require check rods or other stabilizing hardware. The RL2200SS mount has the added feature of self centering, allowing for side loads without sacrificing performance.

Complete Kit Includes:

- 1 EL604STA NEMA 4X stainless steel signal trim junction box
- 3 or 4 RL2200 stainless steel mounting assemblies
- 3 or 4 RL2200 SS stainless steel, hermetically sealed, compression disk load cells
- 25' of our Hostile Environment EL147HE SURVIVOR® load cell cable

APPLICATIONS:

- Tank, hopper, or vessel weighing
- Belt or roller conveyors
- Scale platforms and screw feeders

STANDARD FEATURES:

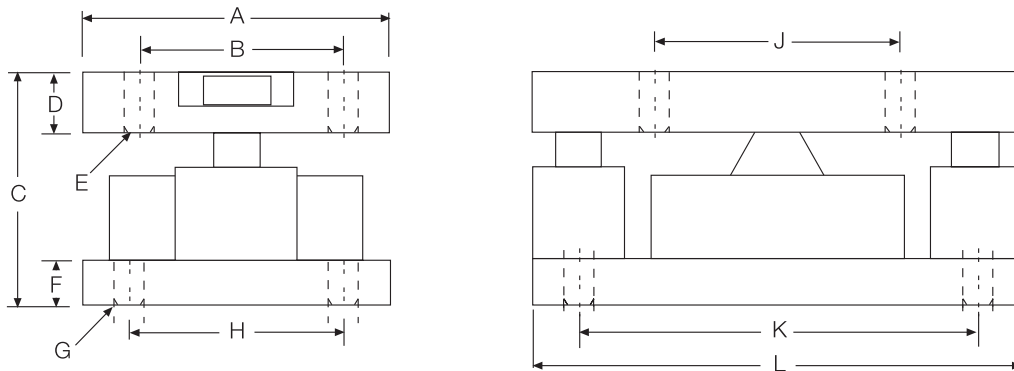
- Capacities: 5000, 10,000, 25,000, 50,000 lb (2268, 4536, 11,340, 22,680 kg)
- Low-profile design
- High 4 mV/V output
- Self-centering in all directions—able to withstand excessive side loads
- Self-checking assembly

Assembly with integral RL2200 SS compression disk load cell. See next page for load cell specifications.



RL2200 SS Series Specifications

**Complete Kit!
Compare
& Save!**



**Low
Profile
Design!**

RATED CAPACITY	DIMENSIONS										
	A	B	C	D	E	F	G	H	J	K	L
lb/inches											
5000-10,000	5.0	3.50	4.00	1.00	.52	1.0	.52	3.50	4.00	6.50	8.0
25,000-50,000	6.0	4.50	4.75	1.25	.78	1.0	.78	4.50	5.00	7.75	10.0
kg/millimeters											
2268-4536	127.0	88.9	101.6	25.4	13.2	19.0	13.2	88.9	101.6	165.1	203.2
11,340-22,679.6	152.4	114.3	120.6	31.7	19.8	25.4	19.8	114.3	127.0	196.8	254.0

LOAD CELL SPECIFICATIONS:

Safe Overload:	150% Full Scale
Full Scale Output:	4.0 mV/V
Rated Excitation:	10 VDC (20 V maximum)
Nonlinearity:	0.05% Full Scale
Hysteresis:	0.03% Full Scale
Temperature:	Compensated range: 15°F to 115°F/-9°C to 46°C
Bridge Resistance:	350 ohms nominal
Insulation Resistance:	5000 megohms
Material/Finish:	Stainless steel
Seal Type:	Hermetically sealed, IP66/68
Cable Length:	30'/9.1m
Cable Color Code:	Red + Excitation Black - Excitation Green + Signal White - Signal
Warranty:	2 years

RL2200 SS SERIES ORDER INFORMATION

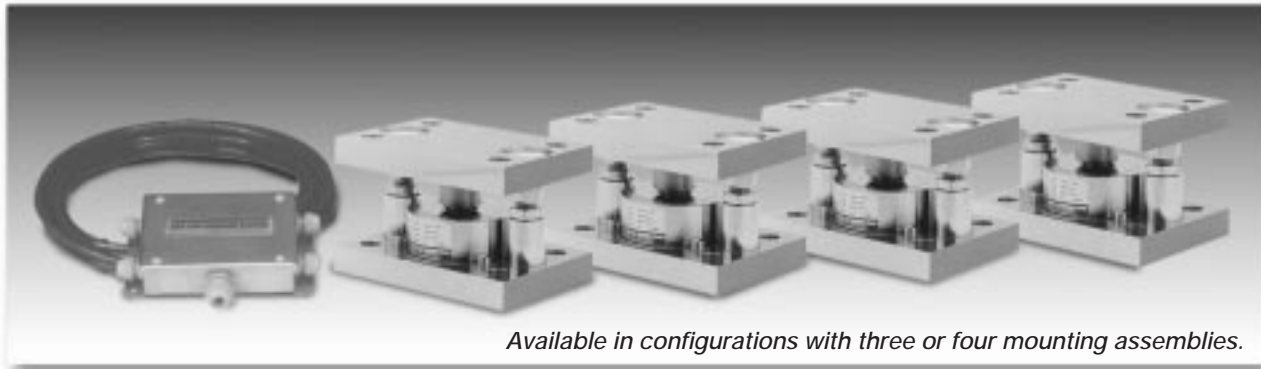
Load Rating	Part #	Suggested List Price
Single Modules		
5000 lb (2268 kg)	45845	\$1,710.00
10,000 lb (4536 kg)	45844	\$1,710.00
25,000 lb (11,340 kg)	45843	\$2,650.00
50,000 lb (22,680 kg)	45842	\$2,650.00
3-Module Kits		
5000 lb (2268 kg)	46478	\$5,330.00
10,000 lb (4536 kg)	46479	\$5,330.00
25,000 lb (11,340 kg)	46480	\$8,150.00
50,000 lb (22,680 kg)	46481	\$8,150.00
4-Module Kits		
5000 lb (2268 kg)	46482	\$7,040.00
10,000 lb (4536 kg)	46483	\$7,040.00
25,000 lb (11,340 kg)	46484	\$10,800.00
50,000 lb (22,680 kg)	46485	\$10,800.00

Weigh Modules

Weigh Modules • Tank and Hopper Kits

RLC

Stainless Steel Weigh Modules, Revere Transducers



Available in configurations with three or four mounting assemblies.

The RLC self-aligning silo mount, together with the RLC load cell family, are an ideal solution for process control, batch weighing, silo/hopper and belt scale applications.

The RLC mount incorporates a removable "rocker pin" design, that uses hardened stainless steel components on all load-bearing surfaces. The fully stainless steel construction guarantees long-term reliability, even in the most harsh environments.

Load Cell Certifications:



Module with hermetically-sealed RLC compression canister load cell. Refer to page 249 for load cell specifications.



Complete Kit Includes:

- 1 EL604STA NEMA 4X stainless steel signal trim junction box
- 3 or 4 RLC stainless steel compression mounts
- 3 or 4 RLC stainless steel hermetically-sealed compression disk load cells
- 25' of our Hostile Environment EL147HE SURVIVOR® load cell cable

APPLICATIONS:

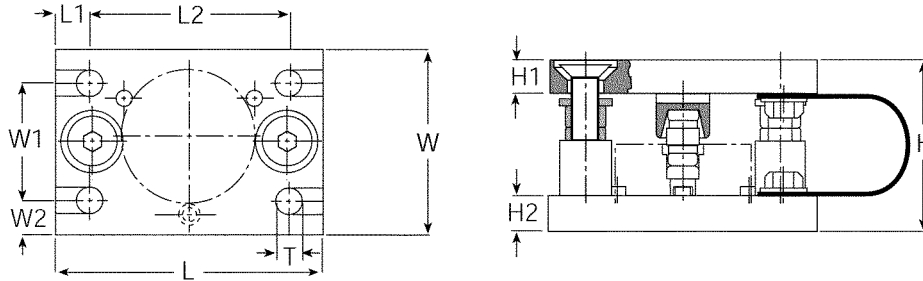
- Medium-capacity tanks, bins and hoppers
- Washdown or corrosive applications
- Process control and batch weighing

STANDARD FEATURES:

- Capacities (per module): 500-5000 kg (1102.3-11,023.1 lb)
- Matched output load cells eliminate trimming
- 304 stainless steel construction
- Rocker pin design allows movement in all directions
- Hermetically-sealed, IP66/68 stainless steel load cells
- Easy load cell replacement
- Integral jacking/shipping bolts

RLC Specifications

**Complete Kit!
Compare
& Save!**



RATED CAPACITY	DIMENSIONS									
	H	H1	H2	L	L1	L2	T	W	W1	W2
kg/millimeters										
500-1000	80	20	15	150	15	120	14 (Top plate)	100	70	15
2000-5000	105	20	20	160	20	120	13.8 (Bottom plate)	110	70	20
lb/inches										
1102.3-2204.6	3.15	.79	.59	5.91	.59	4.72	.55 (Top plate)	3.94	2.76	.59
4409.2-11,023.1	4.13	.79	.79	6.30	.79	4.72	.54 (Bottom plate)	4.33	2.76	.79

RLC ORDER INFORMATION

Load Rating (Load Cell Capacity)	Part #	Suggested List Price
Single Modules Load Cells Included:		
500 kg (1102.3 lb)	36401	\$985.00
1000 kg (2204.6 lb)	36402	\$985.00
2000 kg (4409.2 lb)	36403	\$985.00
3500 kg (7717.5 lb)	36404	\$1,065.00
5000 kg (11,023.1 lb)	36405	\$1,065.00
3-Module Kits		
500 kg (1102.3 lb)	36406	\$3,205.00
1000 kg (2204.6 lb)	36407	\$3,205.00
2000 kg (4409.2 lb)	36408	\$3,205.00
3500 kg (7717.5 lb)	36409	\$3,445.00
5000 kg (11,023.1 lb)	36410	\$3,445.00
4-Module Kits		
500 kg (1102.3 lb)	36411	\$4,190.00
1000 kg (2204.6 lb)	36412	\$4,190.00
2000 kg (4409.2 lb)	36413	\$4,190.00
3500 kg (7717.5 lb)	36414	\$4,495.00
5000 kg (11,023.1 lb)	36415	\$4,495.00

* Load Rating is per module

USA: 800-472-6703 • Canada/Mexico: 800-321-6703 • International: 715-234-9171

Prices & Specifications subject to change without notice

Weigh Modules • Tank and Hopper Kits

220 UNIVERSAL MOUNT

Stainless Steel Weigh Modules, TEDEA HUNTLEIGH



Available in configurations with three or four mounting assemblies.

The 220 Universal Mount is designed to be used with the Model 220 load cell described above. The mount incorporates built-in jacking bolts to prevent damage to the load cell during installation. It's stainless steel construction is designed to be used in the harshest of environments.

Load Cell Certifications:



Module with hermetically-sealed 220 compression load cell. Refer to page 327 for load cell specifications.



Complete Kit Includes:

- 1 EL604STA NEMA 4X stainless steel signal trim junction box
- 3 or 4 220 stainless steel compression mounts
- 3 or 4 220 stainless steel hermetically-sealed compression disk load cells
- 25' of our Hostile Environment EL147HE SURVIVOR® load cell cable

APPLICATIONS:

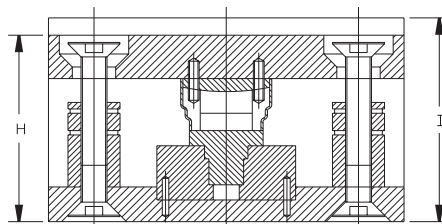
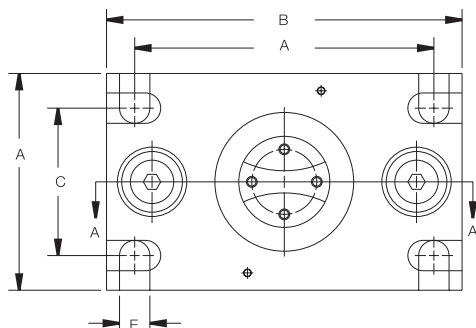
- Medium- to high-capacity tanks, bins and hoppers
- Washdown or corrosive applications
- Process control and batch weighing

STANDARD FEATURES:

- Capacities (per module): 5,000kg to 30,000kg
- Matched output load cells eliminate trimming
- 304 stainless steel construction
- Hermetically-sealed, IP66/68 stainless steel load cells
- Easy load cell replacement
- Integral jacking/shipping bolts

220 Universal Mount Specifications

NEW!
PRODUCT



RATED CAPACITY	A	B	C	DIMENSIONS D	E	H	I
kg/millimeters							
5,000	127	203	90	170	18	107	118
10,000	127	203	90	170	18	107	118
20,000/30,000	152	245	115	208	24	148	156
lb/inches							
11,023.1	5.00	8.00	3.54	6.70	.71	4.21	4.65
22,046.3	5.00	8.00	3.54	6.70	.71	4.21	4.65
44,092.7/66,139.0	5.98	9.65	4.53	8.19	.94	5.83	6.14

SPECIFICATIONS:

Full Scale Output:	2.0 mV/V
Bridge Resistance:	1000 ohms, nominal
Material/Finish:	Stainless Steel
Temperature:	Operating temperature range 14°F to 104°F/-10°C to 40°C
Manufacturer:	
Model Number:	
Safe Overload:	150% at center loading point, full scale
Rated Excitation:	10V DC (15V maximum)
Total Error:	0.020% Full scale
Seal type:	2000 megaohms sealed, IP68
Cable Length:	5m (5,000kg), 10m (10,000-20,000kg) 20m (30,000kg)
Cable Color Code:	Blue + Excitation Black - Excitation Green ... + Sense Grey - Sense White + Signal Red - Signal
Warranty:	2 years

220 UNIVERSAL MOUNT ORDER INFORMATION

Load Rating (Load Cell Capacity)	Part #	Suggested List Price
3-Module Load Cells Includes:		
5000 kg (11,023.1 lb)	66208	\$5,890.00
10,000 kg (22,046.3 lb)	66209	\$6,190.00
20,000 kg (44,092.7 lb)	66210	\$7,855.00
30,000 kg (66,139.0 lb)	66211	\$7,855.00
4-Module Load Cells Includes:		
5000 kg (11,023.1 lb)	66212	\$7,780.00
10,000 kg (22,046.3 lb)	66213	\$8,180.00
20,000 kg (44,092.7 lb)	66214	\$10,400.00
30,000 kg (66,139.0 lb)	66215	\$10,400.00

Weigh Modules • Tank and Hopper Kits

EZ Mount 1

Mild Steel, Rice Lake Weighing Systems/Revere Transducers



Available in configurations with three or four mounting assemblies.

The EZ Mount 1 Series weigh modules utilize the double-ended beam design with an articulating top plate to provide superior accuracy in any loading condition.

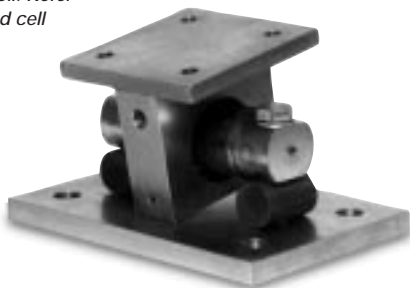
The double-ended beam design means there is less cumbersome hardware and each module has a lower profile than modules of different configurations.

NTEP certified and FM approved RL70000 Series load cells give you accuracy and dependability in any environment, including intrinsically safe and explosion proof areas.

Load Cell Certifications:



Module with RL70000 double-ended shear beam load cell. Refer to page 131 for load cell specifications.



Complete Kit Includes:

- 1 EL604STA NEMA 4X stainless steel signal trim junction box
- 3 or 4 EZ Mount 1 mild steel compression mounts
- 3 or 4 RL70000 double-ended shear beam load cells
- 25' of our Hostile Environment EL147HE SURVIVOR® load cell cable

APPLICATIONS:

- Medium- to heavy-capacity tank and hopper weighing applications

STANDARD FEATURES:

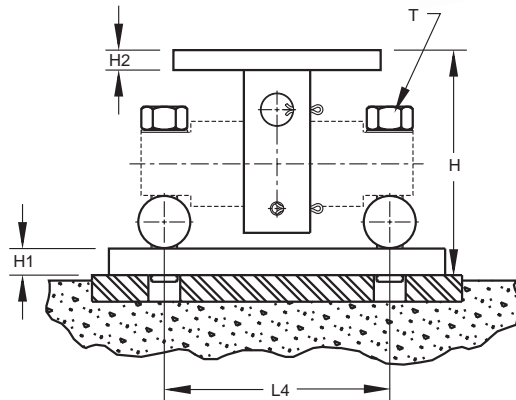
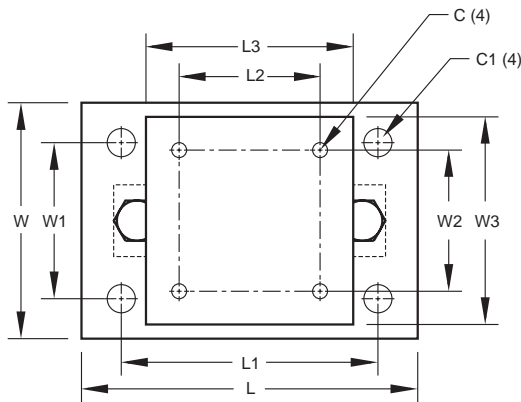
- Capacities (per module): 5000-250,000 lb (2268-113,398.1 kg)
- NTEP-certified load cells
- Unique sliding pin design compensates for thermal expansion/contraction
- Self-checking
- Easy load cell replacement
- Simplified design allows bolting directly to tank and floor
- Center-loaded double-ended shear beam design
- Low profile design
- Painted mild steel construction (2-part epoxy paint)

OPTIONAL FEATURES:

- Kits available with Revere Transducers 5103 load cell, capacities in 5000-150,000 lb (2268.0-68,039.0 kg)
- Optional Revere Transducers 9103 stainless steel load cell. Consult Factory

Mild Steel EZ Mount 1 Specifications

**Complete Kit!
Compare
& Save!**



RATED CAPACITY	DIMENSIONS														
	C	C1	H	H1	H2	L	L1	L2	L3	L4	T	W	W1	W2	W3
lb/inches															
5000-20,000	.56	1.06	5.31	.75	.50	11.00	8.00	3.00	6.00	6.87	5/8-18 UNF	7.50	4.00	3.00	6.00
30,000-60,000	.68	1.19	8.43	1.00	.75	15.00	11.50	5.12	8.00	8.50	1-14 UNS	10.00	6.00	5.12	8.00
100,000	.81	1.38	10.37	1.25	1.25	18.00	14.00	7.50	10.00	9.50	1-14 UNS	12.00	9.00	7.50	10.00
150,000	.81	1.38	10.37	1.25	1.25	18.00	14.00	7.50	10.00	9.50	1-14 UNS	12.00	9.00	7.50	10.00
200,000-250,000	1.06	1.88	16.75	2.00	2.00	26.00	20.00	9.00	12.00	13.00	1 1/2-12 UNS	12.00	6.00	9.00	12.00
kg/millimeters															
2268.0-9071.9	14.2	26.9	134.9	19.1	12.7	279.4	203.2	76.2	139.7	174.5	5/8-18 UNF	190.5	101.6	76.2	139.7
13,607.8-27,215.5	17.3	30.2	214.1	25.4	19.1	381.0	292.1	130.0	203.2	215.9	1-14 UNS	254.0	152.4	130.1	203.2
45,359.2	20.6	35.1	263.4	31.8	31.8	457.2	355.6	190.5	254.0	241.3	1-14 UNS	304.8	228.6	190.5	254.0
68,039.0	20.6	35.1	263.4	31.8	31.8	457.2	355.6	190.5	254.0	241.3	1-14 UNS	304.8	228.6	190.5	254.0
90,718.5-113,398.1	26.9	47.8	425.5	50.8	50.8	660.4	508.0	228.6	304.8	330.2	1 1/2-12 UNS	304.8	152.4	228.6	304.8

NOTES: • Mounting bolts (T) may project on lower side of base plate • Foundation plate not included

EZ MOUNT 1 MILD STEEL ORDER INFORMATION

Load Rating (per module)	Part #	Suggested List Price
Single Modules (Do NOT Include Load Cell)		
5000-20,000 lb (2268.0-9071.9 kg)	17823	\$295.00
30,000-60,000 lb (13,607.8-27,215.5 kg)	17824	\$795.00
100,000 lb (45,359.2 kg)	17850	\$1,095.00
150,000 lb (68,039.0 kg)	29012	\$1,095.00
200,000-250,000 lb (90,718.7-113,398.4 kg)	26068	\$2,095.00
3-Module Kits		
5000 lb (2268.0 kg)	18163	\$2,875.00
10,000 lb (4535.9 kg)	18164	\$2,875.00
20,000 lb (9071.9 kg)	18165	\$2,875.00
30,000 lb (13,607.8 kg)	32164	\$4,545.00
40,000 lb (18,143.7 kg)	32167	\$4,545.00
50,000 lb (22,679.6 kg)	18166	\$4,695.00
60,000 lb (27,215.5 kg)	18167	\$4,695.00
100,000 lb (45,359.2 kg)	18168	\$7,395.00
150,000 lb (68,040 kg)	43290	\$7,395.00
4-Module Kits		
5000 lb (2268.0 kg)	18169	\$3,735.00
10,000 lb (4535.9 kg)	18170	\$3,735.00
20,000 lb (9071.9 kg)	18171	\$3,735.00
30,000 lb (13,607.8 kg)	32165	\$5,765.00
40,000 lb (18,143.7 kg)	32166	\$5,765.00
50,000 lb (22,679.6 kg)	18172	\$5,935.00
60,000 lb (27,215.5 kg)	18173	\$5,935.00
100,000 lb (45,359.2 kg)	18174	\$9,665.00
150,000 lb (68,040 kg)	43291	\$9,665.00

RTI EZ MOUNT 1 MILD STEEL ORDER INFORMATION

Load Rating (per module)	Part #	Suggested List Price
3-Module Kits		
5000 lb (2268.0 kg)	18175	\$2,975.00
10,000 lb (4535.9 kg)	18176	\$2,975.00
20,000 lb (9071.9 kg)	18177	\$2,975.00
30,000 lb (13,607.8 kg)	32169	\$4,645.00
40,000 lb (18,143.7 kg)	32171	\$4,645.00
50,000 lb (22,679.6 kg)	18178	\$4,795.00
60,000 lb (27,215.5 kg)	18179	\$4,795.00
100,000 lb (45,359.2 kg)	18180	\$7,495.00
150,000 lb (68,039.0 kg)	18181	\$7,495.00
4-Module Kits		
5000 lb (2268.0 kg)	18182	\$3,835.00
10,000 lb (4535.9 kg)	18183	\$3,835.00
20,000 lb (9071.9 kg)	18184	\$3,835.00
30,000 lb (13,607.8 kg)	32170	\$5,865.00
40,000 lb (18,143.7 kg)	32172	\$5,865.00
50,000 lb (22,679.6 kg)	18185	\$6,035.00
60,000 lb (27,215.5 kg)	18186	\$6,035.00
100,000 lb (45,359.2 kg)	18187	\$9,765.00
150,000 lb (68,039.0 kg)	18188	\$9,765.00

USA: 800-472-6703 • Canada/Mexico: 800-321-6703 • International: 715-234-9171

Prices & Specifications subject to change without notice

Weigh Modules • Tank and Hopper Kits

EZ Mount 1 Stainless Steel, Rice Lake Weighing Systems



Available in configurations with three or four mounting assemblies.

The EZ Mount 1 Series weigh modules utilize the double-ended beam design with an articulating top plate to provide superior accuracy in any loading condition.

The double-ended beam design means there is less cumbersome hardware and each module has a lower profile than modules of different configurations.

FM approved RL70000 SS Series load cells give you accuracy and dependability in any environment, including intrinsically safe and explosion proof areas.

Load Cell Certifications:



Module with RL70000 SS double-ended shear beam load cell. Refer to page 132 for load cell specifications.



Complete Kit Includes:

- 1 EL604STA NEMA 4X stainless steel signal trim junction box
- 3 or 4 EZ Mount 1 stainless steel compression mounts
- 3 or 4 RL70000 SS stainless steel double-ended shear beam load cells
- 25' of our Hostile Environment EL147HE SURVIVOR® load cell cable

APPLICATIONS:

- Medium- to heavy-capacity tank and hopper weighing applications

STANDARD FEATURES:

- Capacities (per module): 5000-150,000 lb (2268-60,039.0 kg)
- Unique sliding pin design compensates for thermal expansion/contraction
- Self-checking
- Easy load cell replacement
- Simplified design allows bolting directly to tank and floor
- Center-loaded double-ended shear beam design
- Low-profile design
- 304 stainless steel construction

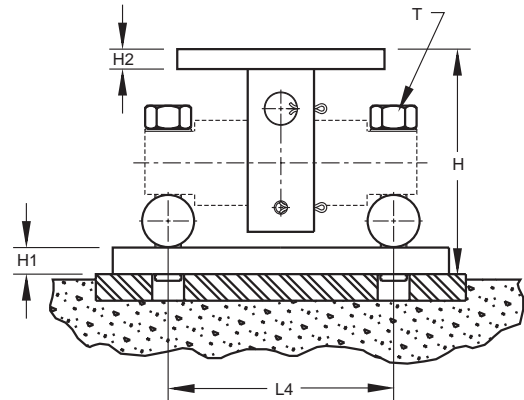
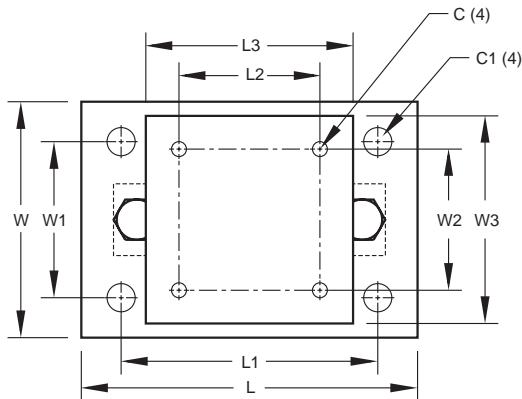
OPTIONAL FEATURES:

- Kits available with Revere Transducers 9103 load cell, capacities in 5000-150,000 lb (2268.0-68,039.0 kg)

Stainless Steel EZ Mount 1 Specifications

**Complete Kit!
Compare
& Save!**

**PRICES
REDUCED**



RATED CAPACITY	DIMENSIONS														
	C	C1	H	H1	H2	L	L1	L2	L3	L4	T	W	W1	W2	W3
lb/inches															
5000-20,000	.56	1.06	5.31	.75	.50	11.00	8.00	3.00	6.00	6.87	5/8-18 UNF	7.50	4.00	3.00	6.00
30,000-60,000	.68	1.19	8.43	1.00	.75	15.00	11.50	5.12	8.00	8.50	1-14 UNS	10.00	6.00	5.12	8.00
100,000	.81	1.38	10.37	1.25	1.25	18.00	14.00	7.50	10.00	9.50	1-14 UNS	12.00	9.00	7.50	10.00
150,000	.81	1.38	10.37	1.25	1.25	18.00	14.00	7.50	10.00	9.50	1-14 UNS	12.00	9.00	7.50	10.00
kg/millimeters															
2268.0-9071.9	14.2	26.9	134.9	19.1	12.7	279.4	203.2	76.2	139.7	174.5	5/8-18 UNF	190.5	101.6	76.2	139.7
13,607.8-27,215.5	17.3	30.2	214.1	25.4	19.1	381.0	292.1	130.0	203.2	215.9	1-14 UNS	254.0	152.4	130.1	203.2
45,359.2	20.6	35.1	263.4	31.8	31.8	457.2	355.6	190.5	254.0	241.3	1-14 UNS	304.8	228.6	190.5	254.0
68,039.0	20.6	35.1	263.4	31.8	31.8	457.2	355.6	190.5	254.0	241.3	1-14 UNS	304.8	228.6	190.5	254.0

NOTES: • Mounting bolts (T) may project on lower side of base plate • Foundation plate not included

EZ MOUNT 1 STAINLESS STEEL ORDER INFORMATION

Load Rating (per module)	Part #	Suggested List Price
Single Modules (Do NOT Include Load Cell)		
5000-20,000 lb (2268.0-9071.9 kg)	17943	\$650.00
30,000-60,000 lb (13,607.8-27,215.5 kg)	17944	\$1,895.00
100,000 lb (45,359.2 kg)	17945	\$3,495.00
150,000 lb (68,039.0 kg)	29011	\$3,495.00
3-Module Kits		
5000 lb (2268.0 kg)	36195	\$4,250.00
10,000 lb (4535.9 kg)	36196	\$4,250.00
20,000 lb (9071.9 kg)	36197	\$4,250.00
30,000 lb (13,607.8 kg)	36198	\$8,100.00
40,000 lb (18,143.7 kg)	36199	\$8,100.00
50,000 lb (22,679.6 kg)	36200	\$8,250.00
60,000 lb (27,215.5 kg)	36201	\$8,250.00
100,000 lb (45,359.2 kg)	36202	\$13,150.00
150,000 lb (68,039.0 kg)	43288	\$13,350.00
4-Module Kits		
5000 lb (2268.0 kg)	36203	\$5,600.00
10,000 lb (4535.9 kg)	36204	\$5,600.00
20,000 lb (9071.9 kg)	36205	\$5,600.00
30,000 lb (13,607.8 kg)	36206	\$11,075.00
40,000 lb (18,143.7 kg)	36207	\$11,075.00
50,000 lb (22,679.6 kg)	36208	\$11,350.00
60,000 lb (27,215.5 kg)	36209	\$11,350.00
100,000 lb (45,359.2 kg)	36210	\$17,450.00
150,000 lb (68,039.0 kg)	43289	\$17,450.00

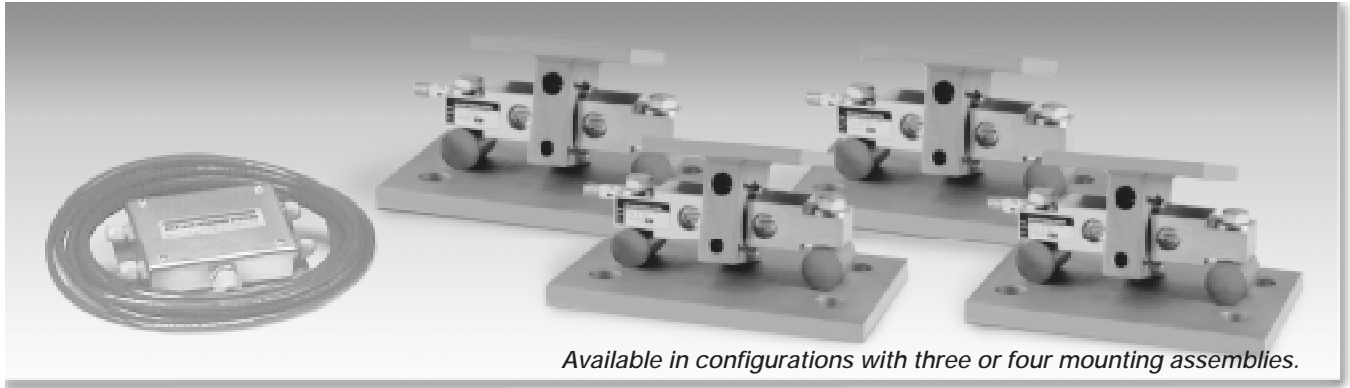
USA: 800-472-6703 • Canada/Mexico: 800-321-6703 • International: 715-234-9171

Prices & Specifications subject to change without notice

Weigh Modules • Tank and Hopper Kits

EZ Mount 1 HE

Stainless Steel, Hermetically Sealed, Rice Lake Weighing Systems



Available in configurations with three or four mounting assemblies.

The EZ Mount 1 HE Series weigh modules utilize the double-ended beam design with an articulating top plate to provide superior accuracy in any loading condition.

The double-ended beam design means there is less cumbersome hardware and each module has a lower profile than modules of different configurations.

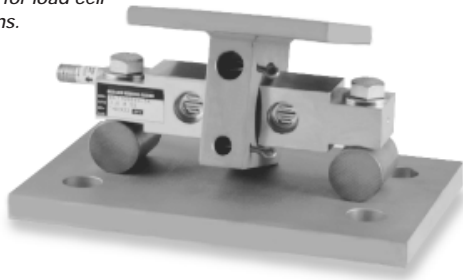
FM-approved RL71000 HE Series load cells give you accuracy and dependability in any environment, including intrinsically-safe and explosion-proof areas.

Their stainless steel, hermetically-sealed design also make them the ideal solution in harsh environments where moisture is apparent.

Load Cell Certifications:



Module with RL71000 HE double-ended shear beam load cell. Refer to page 133 for load cell specifications.



Complete Kit Includes:

- 1 EL604STA NEMA 4X stainless steel signal trim junction box
- 3 or 4 EZ Mount 1 stainless steel compression mounts
- 3 or 4 RL71000 HE hermetically-sealed stainless steel double-ended shear beam load cells
- 25' of our Hostile Environment EL147HE SURVIVOR® load cell cable

APPLICATIONS:

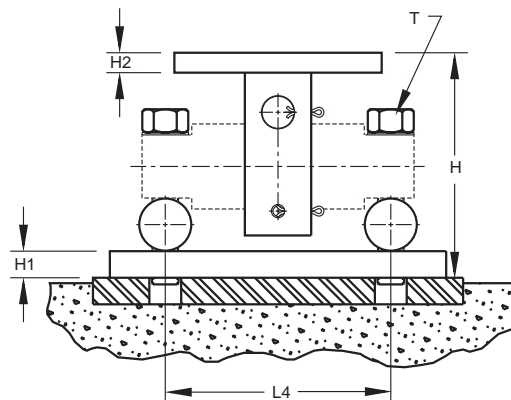
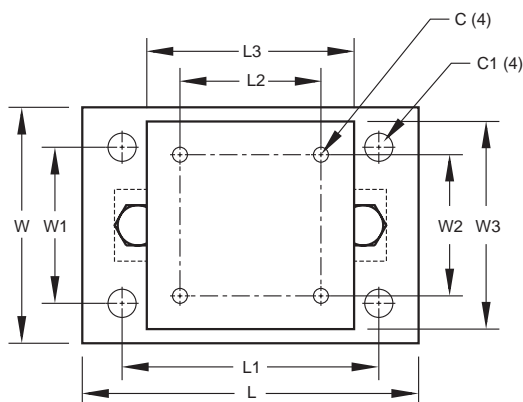
- Medium- to heavy-capacity tank and hopper weighing applications

STANDARD FEATURES:

- Capacities (per module): 5000-60,000 lb (2268-27,216.0 kg)
- Unique sliding pin design compensates for thermal expansion/contraction
- Self-checking
- Easy load cell replacement
- Simplified design allows bolting directly to tank and floor
- Center-loaded double-ended shear beam design
- Low-profile design
- 304 stainless steel construction

Stainless Steel, Hermetically Sealed, EZ Mount 1 HE Specifications

**Complete Kit!
Compare
& Save!**



RATED CAPACITY	DIMENSIONS															
	C	C1	H	H1	H2	L	L1	L2	L3	L4	T	W	W1	W2	W3	
lb/inches																
5000-20,000	.56	1.06	5.31	.75	.50	11.00	8.00	3.00	6.00	6.87	5/8-18 UNF	7.50	4.00	3.00	6.00	
30,000-60,000	.68	1.19	8.43	1.00	.75	15.00	11.50	5.12	8.00	8.50	1-14 UNS	10.00	6.00	5.12	8.00	
kg/millimeters																
2268.0-9071.9	14.2	26.9	134.9	19.1	12.7	279.4	203.2	76.2	139.7	174.5	5/8-18 UNF	190.5	101.6	76.2	139.7	
13,607.8-27,215.5	17.3	30.2	214.1	25.4	19.1	381.0	292.1	130.0	203.2	215.9	1-14 UNS	254.0	152.4	130.1	203.2	

NOTES: • Mounting bolts (T) may project on lower side of base plate • Foundation plate not included

EZ HE MOUNT 1 STAINLESS STEEL ORDER INFORMATION

Load Rating (per module)	Part #	Suggested List Price
3-Module Kits		
5000 lb (2268.0 kg)	46695	\$4,370.00
10,000 lb (4535.9 kg)	46696	\$4,370.00
20,000 lb (9071.9 kg)	46697	\$4,370.00
30,000 lb (13,607.8 kg)	46698	\$8,320.00
40,000 lb (18,143.7 kg)	46699	\$8,320.00
50,000 lb (22,679.6 kg)	46700	\$8,385.00
60,000 lb (27,215.5 kg)	46701	\$8,385.00
4-Module Kits		
5000 lb (2268.0 kg)	46702	\$5,795.00
10,000 lb (4535.9 kg)	46703	\$5,795.00
20,000 lb (9071.9 kg)	46704	\$5,795.00
30,000 lb (13,607.8 kg)	46705	\$11,295.00
40,000 lb (18,143.7 kg)	46706	\$11,295.00
50,000 lb (22,679.6 kg)	46707	\$11,415.00
60,000 lb (27,215.5 kg)	46708	\$11,415.00

USA: 800-472-6703 • Canada/Mexico: 800-321-6703 • International: 715-234-9171

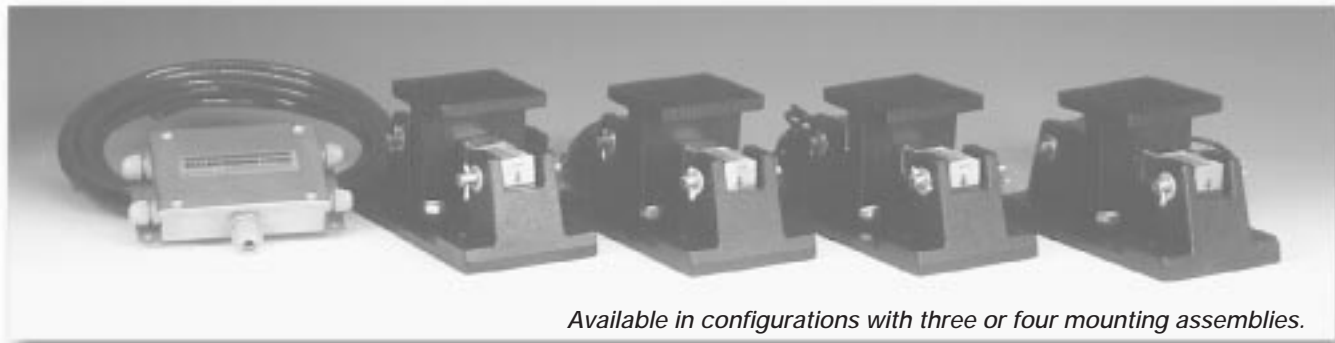
Prices & Specifications subject to change without notice

Weigh Modules

Weigh Modules • Tank and Hopper Kits

RL1600 Series

Cast Iron, Rice Lake Weighing Systems/Sensortronics



Available in configurations with three or four mounting assemblies.

The RL1600 Series Mounting Module Kit utilizes several Rice Lake Weighing Systems components to provide an unmatched level of performance in tank and hopper weighing applications. The RL1600 Series kit is ideally suited for indoor and outdoor process control operations in the medium- to high-capacity ranges. Each module incorporates self-checking capabilities for thermal expansion and contraction.

Load Cell Certifications:



Cast iron module with RL75016 double-ended beam load cell. Refer to page 134 for load cell specifications.



Complete Kit Includes:

- 1 EL604STA NEMA 4X stainless steel signal trim junction box
- 3 or 4 RL1600 cast iron compression mounts
- 3 or 4 RL75016 double-ended shear beam load cells
- 25' of our Hostile Environment EL147HE SURVIVOR® load cell cable

APPLICATIONS:

- Medium- to heavy-capacity tanks, bins, and hoppers
- Bulk material management
- Dry ingredient batching, mixing, and blending

STANDARD FEATURES:

- Capacities (per module): 1000-25,000 lb (453.6-11,339.8 kg)
- Cast iron construction
- Self-checking easy-to-use design allows module to be bolted directly to tank leg without requiring additional mounting plates or load buttons
- Environmentally protected load cells
- Double-ended beam design, center loaded

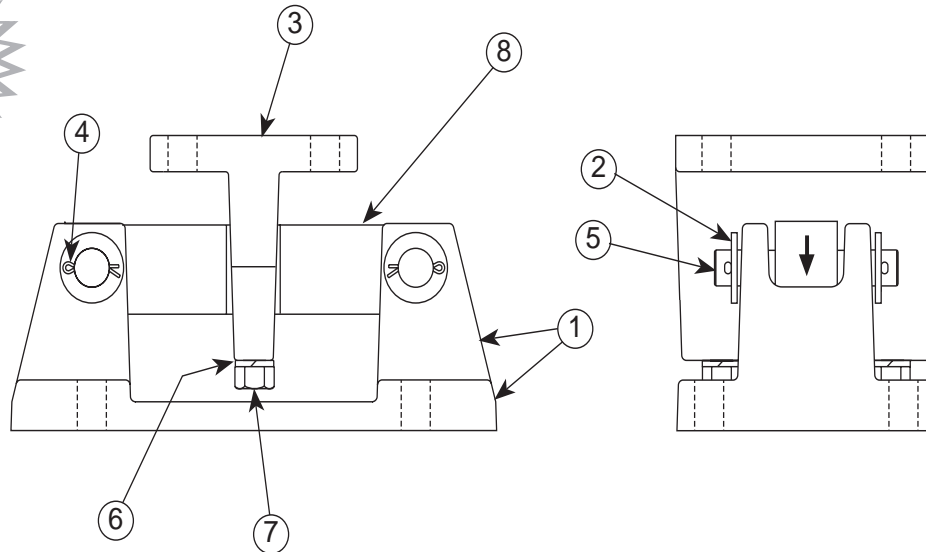
OPTIONAL FEATURES:

- Kits available with Sensortronics 65016 load cells, capacities (per module): 1000-25,000 lb (453.6-11,339.8 kg)

Cast Iron RL1600 Series Specifications

**Complete Kit!
Compare
& Save!**

**NEW
LOWER
PRICES**



RATED CAPACITY	DIMENSIONS												
	C	H	H1	H2	L	L1	L2	L3	T	W	W1	W2	W3
lb/inches													
1000-5000	.56	5.00	.50	.50	9.31	2.75	4.00	6.25	1/2-13 UNC	5.00	3.75	2.75	4.00
10,000-25,000	.78	7.89	.75	.75	12.00	6.00	8.00	7.50	3/4-10 UNC	8.00	6.00	6.00	8.00
kg/millimeters													
453.6-2268.0	14.2	127.0	12.7	12.7	236.5	69.9	101.6	158.8	1/2-13 UNC	127.0	95.3	69.9	101.6
4535.9-11,339.8	19.8	200.4	19.1	19.1	304.8	152.4	203.2	190.5	3/4-10 UNC	203.2	152.4	152.4	203.2

RL1600 ORDER INFORMATION

Load Rating (per module)	Part #	Suggested List Price
Single Modules (Do NOT Include Load Cell)		
1000-5000 lb (453.6-2268.0 kg)	17964	\$150.00
10,000-25,000 lb (4535.9-11,339.8 kg)	17965	\$290.00
3-Module Kits		
1000 lb (453.6 kg)	25663	\$1,995.00
1500 lb (680.4 kg)	25664	\$1,995.00
2000 lb (907.2 kg)	25665	\$1,995.00
2500 lb (1134.0 kg)	25666	\$1,995.00
3000 lb (1360.8 kg)	25667	\$1,995.00
5000 lb (2268.0 kg)	25668	\$1,995.00
10,000 lb (4535.9 kg)	25669	\$2,595.00
15,000 lb (6803.9 kg)	25671	\$2,595.00
20,000 lb (9071.9 kg)	25672	\$2,595.00
25,000 lb (11,339.8 kg)	25674	\$2,595.00
4-Module Kits		
1000 lb (453.6 kg)	25675	\$2,550.00
1500 lb (680.4 kg)	25676	\$2,550.00
2000 lb (907.2 kg)	25677	\$2,550.00
2500 lb (1134.0 kg)	25678	\$2,550.00
3000 lb (1360.8 kg)	25679	\$2,550.00
5000 lb (2268.0 kg)	25680	\$2,550.00
10,000 lb (4535.9 kg)	25681	\$3,350.00
15,000 lb (6803.9 kg)	25682	\$3,350.00
20,000 lb (9071.9 kg)	25683	\$3,350.00
25,000 lb (11,339.8 kg)	25684	\$3,350.00

SENSORTRONICS 65016 ORDER INFORMATION

Load Rating (per module)	Part #	Suggested List Price
3-Module Kits		
1000 lb (453.6 kg)	25685	\$2,350.00
1500 lb (680.4 kg)	25686	\$2,350.00
2500 lb (1134.0 kg)	25688	\$2,350.00
5000 lb (2268.0 kg)	25690	\$2,350.00
10,000 lb (4535.9 kg)	25691	\$2,950.00
15,000 lb (6803.9 kg)	25692	\$2,950.00
20,000 lb (9071.9 kg)	25693	\$2,950.00
25,000 lb (11,339.8 kg)	25694	\$2,950.00
4-Module Kits		
1000 lb (453.6 kg)	25695	\$3,050.00
1500 lb (680.4 kg)	25696	\$3,050.00
2500 lb (1134.0 kg)	25698	\$3,050.00
5000 lb (2268.0 kg)	25700	\$3,050.00
10,000 lb (4535.9 kg)	25701	\$3,875.00
15,000 lb (6803.9 kg)	25702	\$3,875.00
20,000 lb (9071.9 kg)	25703	\$3,875.00
25,000 lb (11,339.8 kg)	25704	\$3,875.00

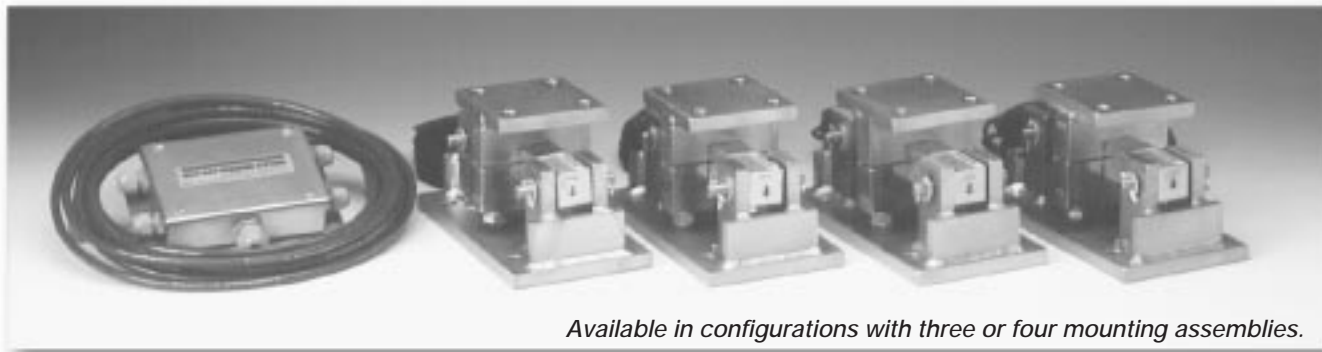
USA: 800-472-6703 • Canada/Mexico: 800-321-6703 • International: 715-234-9171

Prices & Specifications subject to change without notice

Weigh Modules • Tank and Hopper Kits

RL1600 Series

Mild Steel, Rice Lake Weighing Systems/Sensortronics



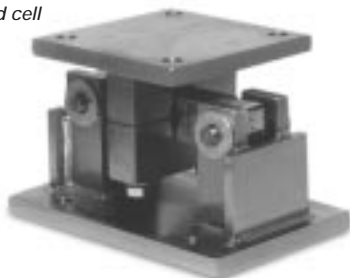
Available in configurations with three or four mounting assemblies.

The RL1600 Series Mounting Module Kit utilizes several Rice Lake Weighing Systems components to provide an unmatched level of performance in tank and hopper weighing applications. The RL1600 Series kit is ideally suited for indoor and outdoor process control operations in the medium- to high-capacity ranges. Each module incorporates self-checking capabilities for thermal expansion and contraction.

Load Cell Certifications:



Mild steel module with RL75016 double-ended beam load cell. Refer to page 134 for load cell specifications.



Complete Kit Includes:

- 1 EL604STA NEMA 4X stainless steel signal trim junction box
- 3 or 4 RL1600 zinc-plated mild steel compression mounts
- 3 or 4 RL75016 double-ended shear beam load cells
- 25' of our Hostile Environment EL147HE SURVIVOR® load cell cable

APPLICATIONS:

- Medium- to heavy-capacity tanks, bins, and hoppers
- Bulk material management
- Dry ingredient batching, mixing, and blending

STANDARD FEATURES:

- Capacities (per module): 1000-75,000 lb (453.6-34,019.5 kg)
- Zinc plated, mild steel construction
- Self-checking easy-to-use design allows module to be bolted directly to tank leg without requiring additional mounting plates or load buttons
- Environmentally protected load cells
- Double-ended shear beam design, center loaded

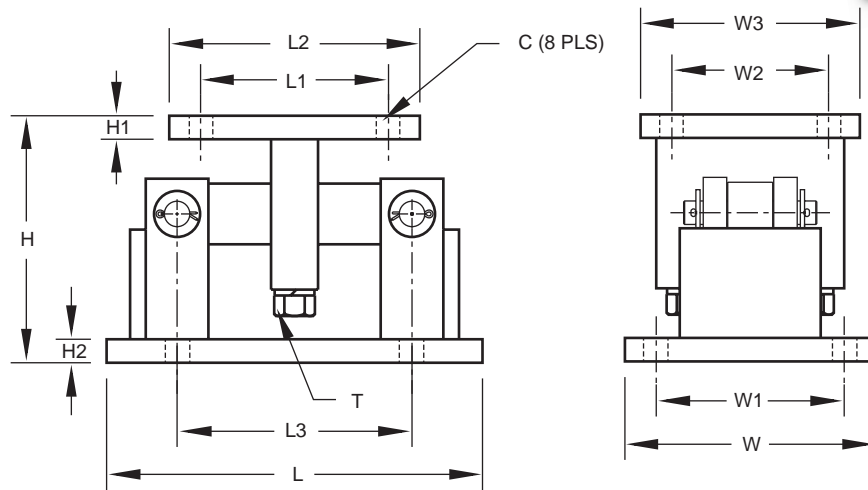
OPTIONAL FEATURES:

- Kits available with Sensortronics 65016 load cells, capacities (per module): 1000-75,000 lb (453.6-34,019.5 kg)

Mild Steel RL1600 Series Specifications

**Complete Kit!
Compare
& Save!**

**NEW
LOWER
PRICES**



RATED CAPACITY	C	H	H1	H2	L	L1	L2	L3	T	W	W1	W2	W3
lb/inches													
1000-5000	.56	5.00	.50	.50	9.25	2.75	4.00	6.25	1/2-13 UNC	5.00	3.75	2.75	4.00
10,000-25,000	.78	7.87	.75	.75	12.00	6.00	8.00	7.50	3/4-10 UNC	8.00	6.00	6.00	8.00
50,000-75,000	.78	9.31	1.00	1.00	16.25	6.50	9.00	11.50	1 1/4-7 UNC	12.00	9.50	6.50	9.00
kg/millimeters													
453.6-2268.0	14.2	127.0	12.7	12.7	235.0	69.9	101.6	158.8	1/2-13 UNC	127.0	95.3	69.9	101.6
4535.9-11,339.8	19.8	199.9	19.1	19.1	304.8	152.4	203.2	190.5	3/4-10 UNC	203.2	152.4	152.4	203.2
22,679.7-34,019.5	19.8	236.5	25.4	25.4	412.8	165.1	228.6	292.1	1 1/4-7 UNC	304.8	241.3	165.1	228.6

RL1600 ORDER INFORMATION

Load Rating (per module)	Part #	Suggested List Price
Single Modules (Do NOT Include Load Cell)		
1000-5000 lb (453.6-2268.0 kg)	17812	\$150.00
10,000-25,000 lb (4535.9-11,339.8 kg)	17814	\$290.00
50,000 lb (22,679.6 kg)	17816	\$875.00
75,000 lb (34,019.5 kg)	25346	\$975.00
3-Module Kits		
1000 lb (453.6 kg)	18117	\$1,995.00
1500 lb (680.4 kg)	18118	\$1,995.00
2000 lb (907.2 kg)	18119	\$1,995.00
2500 lb (1134.0 kg)	18120	\$1,995.00
3000 lb (1360.8 kg)	18121	\$1,995.00
5000 lb (2268.0 kg)	18122	\$1,995.00
10,000 lb (4535.9 kg)	18123	\$2,595.00
15,000 lb (6803.9 kg)	18124	\$2,595.00
20,000 lb (9071.9 kg)	18125	\$2,595.00
25,000 lb (11,339.8 kg)	18126	\$2,595.00
50,000 lb (22,679.6 kg)	18127	\$5,350.00
75,000 lb (34,019.5 kg)	25348	\$5,350.00
4-Module Kits		
1000 lb (453.6 kg)	18129	\$2,550.00
1500 lb (680.4 kg)	18130	\$2,550.00
2000 lb (907.2 kg)	18131	\$2,550.00
2500 lb (1134.0 kg)	18132	\$2,550.00
3000 lb (1360.8 kg)	18133	\$2,550.00
5000 lb (2268.0 kg)	18134	\$2,550.00
10,000 lb (4535.9 kg)	18135	\$3,350.00
15,000 lb (6803.9 kg)	18136	\$3,350.00
20,000 lb (9071.9 kg)	18137	\$3,350.00
25,000 lb (11,339.8 kg)	18138	\$3,350.00
50,000 lb (22,679.6 kg)	18139	\$7,150.00
75,000 lb (34,019.5 kg)	25349	\$7,150.00

SENSORTRONICS 65016 ORDER INFORMATION

Load Rating (per module)	Part #	Suggested List Price
3-Module Kits		
1000 lb (453.6 kg)	18189	\$2,350.00
1500 lb (680.4 kg)	18190	\$2,350.00
2500 lb (1134.0 kg)	18192	\$2,350.00
5000 lb (2268.0 kg)	18194	\$2,350.00
10,000 lb (4535.9 kg)	18195	\$2,950.00
15,000 lb (6803.9 kg)	18196	\$2,950.00
20,000 lb (9071.9 kg)	18197	\$2,950.00
25,000 lb (11,339.8 kg)	18198	\$2,950.00
50,000 lb (22,679.6 kg)	18199	\$5,795.00
75,000 lb (34,019.5 kg)	25350	\$5,795.00
4-Module Kits		
1000 lb (453.6 kg)	18201	\$3,050.00
1500 lb (680.4 kg)	18202	\$3,050.00
2500 lb (1134.0 kg)	18204	\$3,050.00
5000 lb (2268.0 kg)	18206	\$3,050.00
10,000 lb (4535.9 kg)	18207	\$3,875.00
15,000 lb (6803.9 kg)	18208	\$3,875.00
20,000 lb (9071.9 kg)	18209	\$3,875.00
25,000 lb (11,339.8 kg)	18210	\$3,875.00
50,000 lb (22,679.6 kg)	18211	\$7,595.00
75,000 lb (34,019.5 kg)	25351	\$7,595.00

USA: 800-472-6703 • Canada/Mexico: 800-321-6703 • International: 715-234-9171

Prices & Specifications subject to change without notice

Weigh Modules • Tank and Hopper Kits

RL1600 Series

Stainless Steel, Rice Lake Weighing Systems/Sensortronics



The RL1600 Series Mounting Module Kit utilizes several Rice Lake Weighing Systems components to provide an unmatched level of performance in tank and hopper weighing applications. The RL1600 Series kit is ideally suited for indoor and outdoor process control operations in the medium- to high-capacity ranges. Each module incorporates self-checking capabilities for thermal expansion and contraction.

Load Cell Certifications:



Fabricated stainless steel module with RL75016 SS double-ended beam load cell. Refer to page 135 for load cell specifications.



Complete Kit Includes:

- 1 EL604STA NEMA 4X stainless steel signal trim junction box
- 3 or 4 RL1600 stainless steel compression mounts
- 3 or 4 RL75016SS stainless steel double-ended shear beam load cells
- 25' of our Hostile Environment EL147HE SURVIVOR® load cell cable

APPLICATIONS:

- Medium- to heavy-capacity tanks, bins, and hoppers
- Bulk material management
- Dry ingredient batching, mixing, and blending

STANDARD FEATURES:

- Capacities (per module): 1000-75,000 lb (453.6-34,019.5 kg)
- 304 stainless steel construction
- Self-checking easy-to-use design allows module to be bolted directly to tank leg without requiring additional mounting plates or load buttons
- Environmentally protected load cells
- Double-ended shear beam design, center loaded

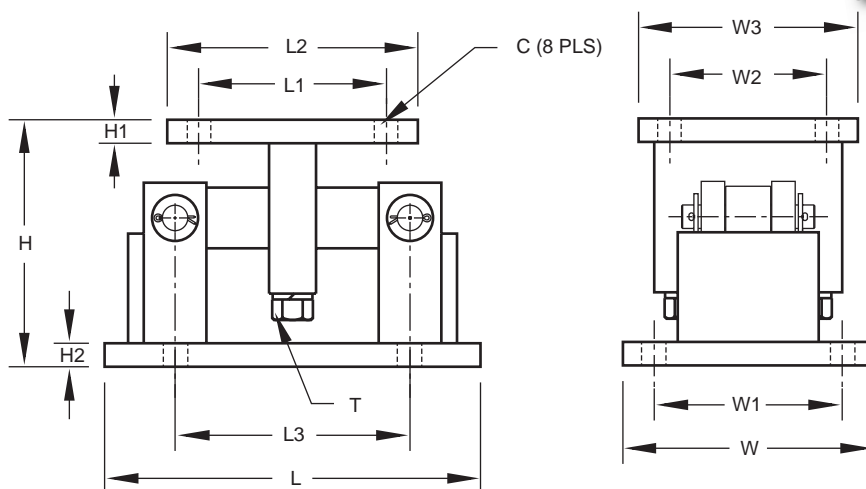
OPTIONAL FEATURES:

- Kits available with Sensortronics 65016W SS load cells

304 Stainless Steel RL1600 Series Specifications

**Complete Kit!
Compare
& Save!**

Weigh Modules



RATED CAPACITY	C	H	H1	H2	L	L1	L2	L3	T	W	W1	W2	W3
DIMENSIONS													
lb/inches													
1000-5000	.56	5.00	.50	.50	9.25	2.75	4.00	6.25	1/2-13 UNC	5.00	3.75	2.75	4.00
10,000-25,000	.78	7.87	.75	.75	12.00	6.00	8.00	7.50	3/4-10 UNC	8.00	6.00	6.00	8.00
50,000-75,000	.78	9.31	1.00	1.00	16.25	6.50	9.00	11.50	1 1/4-7 UNC	12.00	9.50	6.50	9.00
kg/millimeters													
453.6-2268.0	14.2	127.0	12.7	12.7	235.0	69.9	101.6	158.8	1/2-13 UNC	127.0	95.3	69.9	101.6
4535.9-11,339.8	19.8	199.9	19.1	19.1	304.8	152.4	203.2	190.5	3/4-10 UNC	203.2	152.4	152.4	203.2
22,679.7-34,019.5	19.8	236.5	25.4	25.4	412.8	165.1	228.6	292.1	1 1/4-7 UNC	304.8	241.3	165.1	228.6

RL1600 ORDER INFORMATION		
Load Rating (per module)	Part #	Suggested List Price
Single Modules (Do NOT Include Load Cell)		
1000-5000 lb (453.6-2268.0 kg)	17813	\$565.00
10,000-25,000 lb (4535.9-11,339.8 kg)	17815	\$995.00
50,000 lb (22,679.6 kg)	17842	\$2,195.00
75,000 lb (34,019.5 kg)	25347	\$2,195.00
3-Module Kits		
1000 lb (453.6 kg)	18141	\$2,995.00
1500 lb (680.4 kg)	18142	\$2,995.00
2000 lb (907.2 kg)	18143	\$2,995.00
2500 lb (1134.0 kg)	18144	\$2,995.00
5000 lb (2268.0 kg)	18145	\$2,995.00
10,000 lb (4535.9 kg)	18146	\$4,595.00
15,000 lb (6803.9 kg)	18147	\$4,595.00
20,000 lb (9071.9 kg)	18148	\$4,595.00
25,000 lb (11,339.8 kg)	18149	\$4,595.00
50,000 lb (22,679.6 kg)	18150	\$8,995.00
75,000 lb (34,019.5 kg)	25352	\$8,995.00
4-Module Kits		
1000 lb (453.6 kg)	18152	\$3,850.00
1500 lb (680.4 kg)	18153	\$3,850.00
2000 lb (907.2 kg)	18154	\$3,850.00
2500 lb (1134.0 kg)	18155	\$3,850.00
5000 lb (2268.0 kg)	18156	\$3,850.00
10,000 lb (4535.9 kg)	18157	\$6,150.00
15,000 lb (6803.9 kg)	18158	\$6,150.00
20,000 lb (9071.9 kg)	18159	\$6,150.00
25,000 lb (11,339.8 kg)	18160	\$6,150.00
50,000 lb (22,679.6 kg)	18161	\$13,150.00
75,000 lb (34,019.5 kg)	25353	\$13,150.00

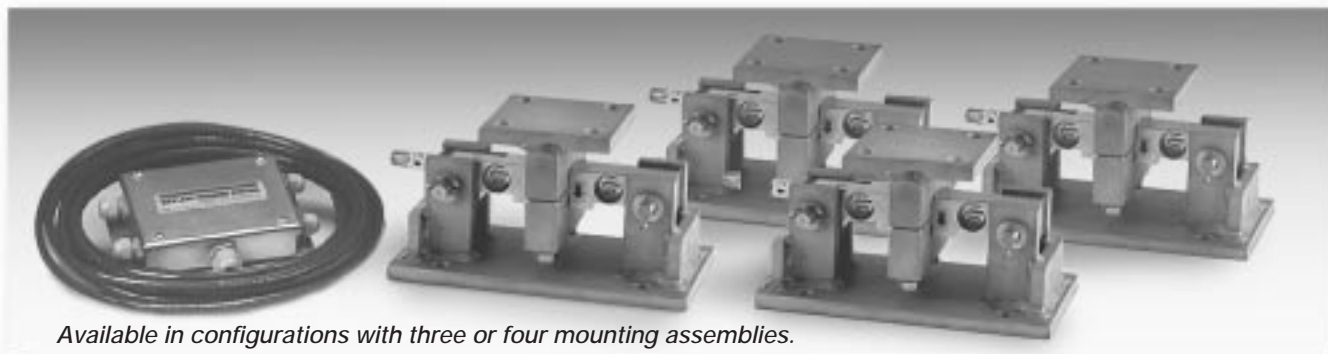
SENSORTRONICS 65016SS ORDER INFORMATION		
Load Rating (per module)	Part #	Suggested List Price
3-Module Kits		
1000 lb (453.6 kg)	18213	\$3,425.00
1500 lb (680.4 kg)	18214	\$3,425.00
2500 lb (1134.0 kg)	18216	\$3,425.00
5000 lb (2268.0 kg)	18217	\$3,425.00
10,000 lb (4535.9 kg)	18218	\$5,095.00
15,000 lb (6803.9 kg)	18219	\$5,095.00
20,000 lb (9071.9 kg)	18220	\$5,095.00
25,000 lb (11,339.8 kg)	18221	\$5,095.00
50,000 lb (22,679.6 kg)	18222	\$10,250.00
75,000 lb (34,019.5 kg)	25354	\$10,250.00
4-Module Kits		
1000 lb (453.6 kg)	18224	\$4,550.00
1500 lb (680.4 kg)	18225	\$4,550.00
2500 lb (1134.0 kg)	18227	\$4,550.00
5000 lb (2268.0 kg)	18228	\$4,550.00
10,000 lb (4535.9 kg)	18229	\$6,775.00
15,000 lb (6803.9 kg)	18230	\$6,775.00
20,000 lb (9071.9 kg)	18231	\$6,775.00
25,000 lb (11,339.8 kg)	18232	\$6,775.00
50,000 lb (22,679.6 kg)	18233	\$13,695.00
75,000 lb (34,019.5 kg)	25355	\$13,695.00

USA: 800-472-6703 • Canada/Mexico: 800-321-6703 • International: 715-234-9171

Prices & Specifications subject to change without notice

Weigh Modules • Tank and Hopper Kits

RL1600 HE Series Stainless Steel, Hermetically Sealed



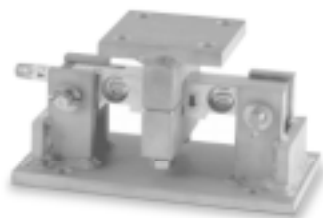
Available in configurations with three or four mounting assemblies.

The RL1600 HE Series Mounting Module Kit utilizes several Rice Lake Weighing Systems components to provide an unmatched level of performance in tank and hopper weighing applications. The RL1600 HE Series kit is ideally suited for indoor and outdoor process control operations in the medium-capacity ranges. Each module incorporates self-checking capabilities for thermal expansion and contraction.

Load Cell Certifications:



Fabricated stainless steel module with RL75016 HE double-ended beam load cell. Refer to page 136 for load cell specifications.



Complete Kit Includes:

- 1 EL604STA NEMA 4X stainless steel signal trim junction box
- 3 or 4 RL1600 stainless steel compression mounts
- 3 or 4 RL75016 HE stainless steel, hermetically sealed double-ended shear beam load cells
- 25' of our Hostile Environment EL147HE SURVIVOR® load cell cable

APPLICATIONS:

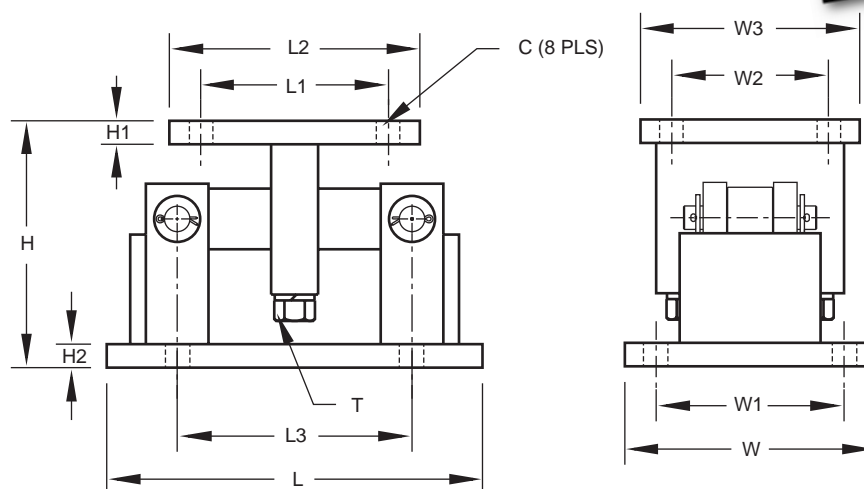
- Medium-capacity tanks, bins, and hoppers
- Bulk material management
- Dry ingredient batching, mixing, and blending

STANDARD FEATURES:

- Capacities (per module): 1000-25,000 lb (453.6-11,339.8 kg)
- 304 stainless steel construction
- Self-checking easy-to-use design allows module to be bolted directly to tank leg without requiring additional mounting plates or load buttons
- Hermetically-sealed IP66/68 protected load cells
- Double-ended shear beam design, center loaded

304 Stainless Steel, Hermetically Sealed RL1600 HE Series Specifications

**Complete Kit!
Compare
& Save!**



RATED CAPACITY	DIMENSIONS												
	C	H	H1	H2	L	L1	L2	L3	T	W	W1	W2	W3
lb/inches													
1000-5000	.56	5.00	.50	.50	9.25	2.75	4.00	6.25	1/2-13 UNC	5.00	3.75	2.75	4.00
10,000-25,000	.78	7.87	.75	.75	12.00	6.00	8.00	7.50	3/4-10 UNC	8.00	6.00	6.00	8.00
kg/millimeters													
453.6-2268.0	14.2	127.0	12.7	12.7	235.0	69.9	101.6	158.8	1/2-13 UNC	127.0	95.3	69.9	101.6
4535.9-11,339.8	19.8	199.9	19.1	19.1	304.8	152.4	203.2	190.5	3/4-10 UNC	203.2	152.4	152.4	203.2

RL1600 HE ORDER INFORMATION

Load Rating (per module)	Part #	Suggested List Price
3-Module Kits		
1000 lb (453.6 kg)	46723	\$3,100.00
2500 lb (1134.0 kg)	46724	\$3,100.00
5000 lb (2268.0 kg)	46725	\$3,100.00
10,000 lb (4535.9 kg)	46726	\$4,700.00
15,000 lb (6803.9 kg)	46727	\$4,700.00
25,000 lb (11,339.8 kg)	46728	\$4,700.00
4-Module Kits		
1000 lb (453.6 kg)	46729	\$4,275.00
2500 lb (1134.0 kg)	46730	\$4,275.00
5000 lb (2268.0 kg)	46731	\$4,275.00
10,000 lb (4535.9 kg)	46732	\$6,475.00
15,000 lb (6803.9 kg)	46733	\$6,475.00
25,000 lb (11,339.8 kg)	46734	\$6,475.00

USA: 800-472-6703 • Canada/Mexico: 800-321-6703 • International: 715-234-9171

Prices & Specifications subject to change without notice

Weigh Modules • Tank and Hopper Kits

65092 TWA

Heavy-Capacity Tank Weighing Assembly, Sensortronics



Available in configurations with three or four mounting assemblies.

The 65092 Tank Weighing Assembly is designed for use with tanks, bins and large-capacity storage silos. Features include low-profile design for easy installation and self-checking capability with freedom of movement to accommodate for thermal expansion. Also features off-center loading/side load capabilities of up to 30% of full scale capacity. Mounting hardware is hardened alloy steel with zinc plating. The load cell is alloy steel with nickel plating. The 65092 is supplied with 25 feet of load cell cable.

Complete Kit Includes:

- 1 EL604STA NEMA 4X stainless steel signal trim junction box
- 3 or 4 65092 zinc-plated mild steel mounting assemblies
- 3 or 4 65094 nickel plated high-alloy steel compression load cells
- 25' of our Hostile Environment EL147HE SURVIVOR® load cell cable

APPLICATIONS:

- Tank, bin and silo weighing
- Bulk inventory management

STANDARD FEATURES:

- Capacities: 50,000-500,000lb (22,679.7-226,796.9kg)
- Mounts directly to foundation or structural support
- Free-floating top mounting plate provides side checking with provisions for thermal expansion
- No check rods required
- Lift-off protected
- Low profile/low deflection
- Symmetrical mounting bolt pattern simplifies installation
- Integral conduit adaptor
- Accommodates Sensortronics 65094 load cell

OPTIONAL FEATURES:

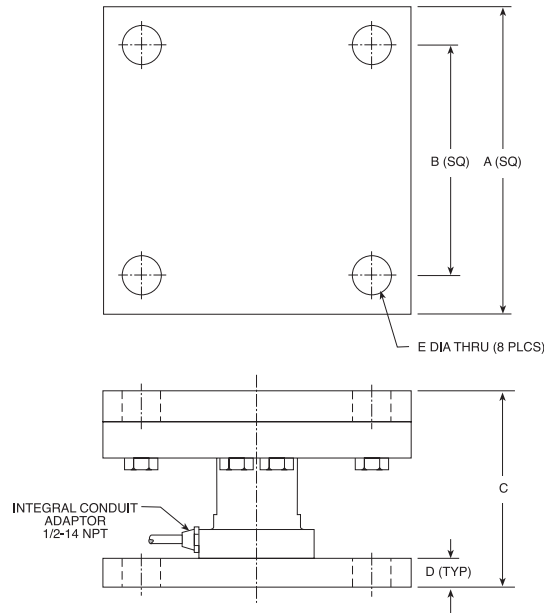
- Stainless steel versions available. Consult factory.
- High-temperature versions available. Consult factory.
- Custom mounting bolt patterns are available. Consult factory.

Assembly with integral 65094 compression canister load cell. See next page for load cell specifications.



65092 TWA Specifications

**Complete Kit!
Compare
& Save!**



LOAD CELL SPECIFICATIONS:

Safe Overload:	200% Full Scale Compression, 100% Full Scale Tension
Full Scale Output:	2.0 mV/V
Rated Excitation:	10 VDC (25 V maximum)
Nonlinearity:	0.1% Full Scale
Combined Error:	0.1% Full Scale
Temperature:	Compensated range: 14°F to 104°F/10°C to 40°C
Bridge Resistance:	350 ohms
Insulation Resistance:	5000 megohms
Material/Finish:	High-alloy steel, nickel plated
Seal Type:	Environmentally protected
Cable Length:	25'/7.6m
Cable Color Code:	Red + Excitation Black - Excitation Green ... + Signal White - Signal
Warranty:	2 years

RATED CAPACITY	DIMENSIONS					TOTAL TOP PLATE MOVEMENT
	A	B	C	D	E	
lb/inches						
50,000	8.00	6.00	5.13	0.94	0.78	.75
100,000	10.00	7.50	7.38	1.19	1.12	1.00
200,000	12.00	8.50	9.50	1.44	1.63	1.00
300,000	14.00	9.50	11.00	1.94	1.63	1.00
500,000	17.00	12.00	12.63	2.44	2.13	1.00
kg/millimeters						
22,679.6	203.2	152.4	130.3	23.9	19.8	19.1
45,359.4	254.0	190.5	187.5	30.2	28.4	25.4
90,718.7	304.8	215.9	241.3	36.6	41.4	25.4
136,078.1	355.6	241.3	279.4	49.3	41.4	25.4
226,796.9	431.8	304.8	320.8	62.0	54.1	25.4

65092 TWA ORDER INFORMATION

Load Rating (per module)	Part #	Suggested List Price
Single Modules (Include Load Cell):		
50,000 lb (22,679.6 kg)	29866	\$1,525.00
100,000 lb (45,359.4 kg)	29867	\$2,595.00
200,000 lb (90,718.7 kg)	29868	\$4,025.00
300,000 lb (136,078.1 kg)	29869	\$4,650.00
500,000 lb (226,796.9 kg)	29870	\$5,925.00
3-Module Kits:		
50,000 lb (22,679.6 kg)	29857	\$4,775.00
100,000 lb (45,359.4 kg)	29858	\$7,985.00
200,000 lb (90,718.7 kg)	29859	\$12,275.00
300,000 lb (136,078.1 kg)	29860	\$14,150.00
500,000 lb (226,796.9 kg)	29861	\$17,995.00
4-Module Kits:		
50,000 lb (22,679.6 kg)	29852	\$6,300.00
100,000 lb (45,359.4 kg)	29853	\$10,580.00
200,000 lb (90,718.7 kg)	29854	\$16,300.00
300,000 lb (136,078.1 kg)	29855	\$18,800.00
500,000 lb (226,796.9 kg)	29856	\$23,995.00

USA: 800-472-6703 • Canada/Mexico: 800-321-6703 • International: 715-234-9171

Prices & Specifications subject to change without notice

Weigh Modules

Rocker Column Truck Scale Kit Stainless Steel, Hermetically-Sealed Load Cells



Available in configurations with six or eight mounting assemblies.

Some customers have existing equipment capabilities or local machining facilities that they would rather use than purchasing a complete truck scale from any supplier. For those customers, we've introduced a complete truck scale component kit. Both economical and convenient, the kit is available in 6 or 8 mount versions and installs easily. It includes new rocker column load cell technology and a low-profile mild steel construction mount.

Complete Kit Includes:

- 6 or 8 Flintec RCI stainless steel, hermetically-sealed rocker column load cells
- 6 or 8 mild steel rocker column mounts
- 1 JB-808S NEMA 4 signal-trim junction box with individual and section trimming capability or 2 EL304A NEMA 4 signal-trim junction boxes with individual and section trimming capabilities
- 100' of our Hostile Environment EL147HE SURVIVOR® load cell cable

Load Cell Certifications



Assembly with integral RC1 rocker column load cell. See page 204 for load cell specifications.



APPLICATIONS:

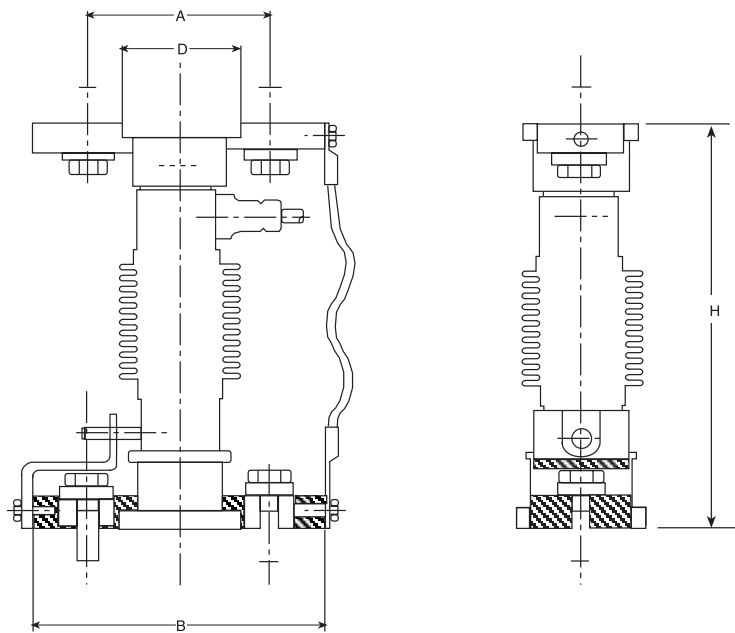
- New truck scale installations
- Updating existing electronic or mechanical truck scales

STANDARD FEATURES:

- The convenience and savings of buying your components in kit form
- Mild steel mounts
- Hermetically-sealed load cells
- Lower profile than traditional alternatives
- Easier to install than canisters or double-ended beams
- Completely self centering
- Anti-rotation protection

Rocker Column Truck Scale Kit Specifications

Complete Kit!
Compare
& Save!



Weigh Modules

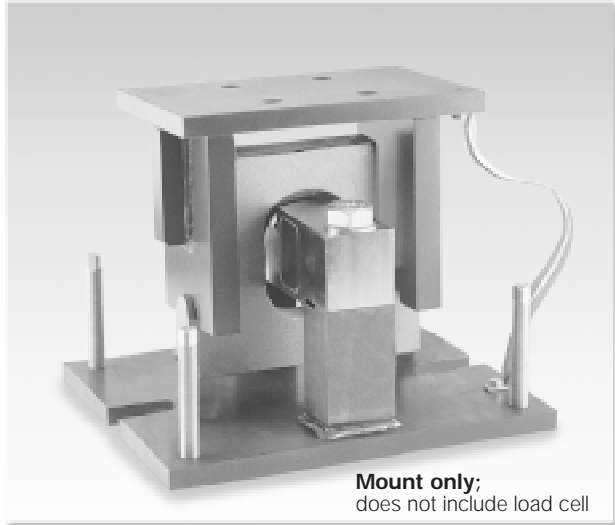
RATED CAPACITY	DIMENSIONS					
	A	B	C	D	E	H
lb/inches						
100,000	4.33	6.85	1.97	2.68	.98	9.92
kg/millimeters						
45,359.4	115.1	174.0	50.0	68.0	24.9	252.0

ROCKER COLUMN TRUCK SCALE KIT ORDER INFORMATION			
Scale Capacity	Capacity Per Weigh Module	Part #	Suggested List Price

6-Module Kits:			
100,000 lb (45,359.4 kg)	50,000 lb (22,679.6 kg) ...	48025	\$8,295.00
8-Module Kits:			
100,000 lb (45,359.4 kg)	50,000 lb (22,679.6 kg) ...	48024	\$10,775.00

Weigh Modules

MVS Mount Motor Vehicle/Truck Scale



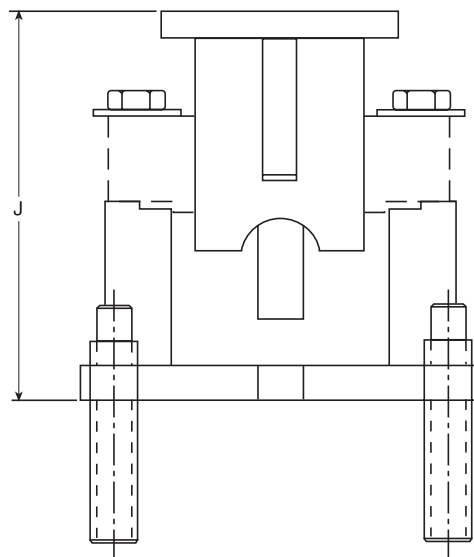
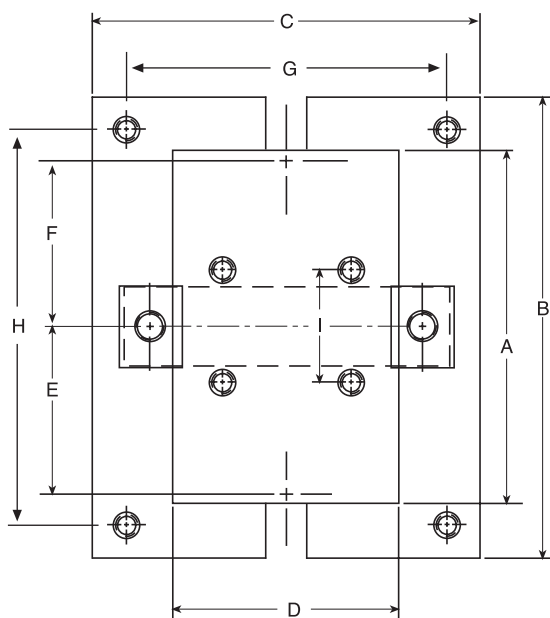
Designed for the Rice Lake Weighing Systems SURVIVOR® Truck Scale product line, the MVS can also be purchased independently to support existing designs or applications. Built to withstand the punishment of the most severe environments, the MVS utilizes the center-loaded double-ended shear beam design. The mount is self-centering, which eliminates the need of costly check rods. This results in a pendulum suspension effect that eliminates binding, protects the load cells from damaging side load shocks common on truck scales, and automatically returns the mount to dead center. The mount is easy to install, and promises high performance and long life.

STANDARD FEATURES:

- Capacity Design: 50,000-75,000 lb (22,680.0-34,019.4 kg)
- Mild steel construction
- Specially hardened center link
- Self-checking design
- Self-centering design
- Accommodates thermal expansion and contraction

OPTIONAL FEATURES:

- Rice Lake Weighing Systems RL75058, Sensortronics 65058, Celtron CLB or Tedeo-Huntleigh 4158 load cells
- NTEP-certified versions of the above load cells available



RATED CAPACITY	DIMENSIONS									
	A	B	C	D	E	F	G	I	J	H
lb/inches										
50,000-75,000	11.00	14.25	12.00	7.00	5.50	5.50	7.25	3.50	11.53	12.25
kg/millimeters										
22,679.6-34,019.4	279.4	362.0	304.8	177.8	139.7	139.7	184.2	88.9	292.9	387.4

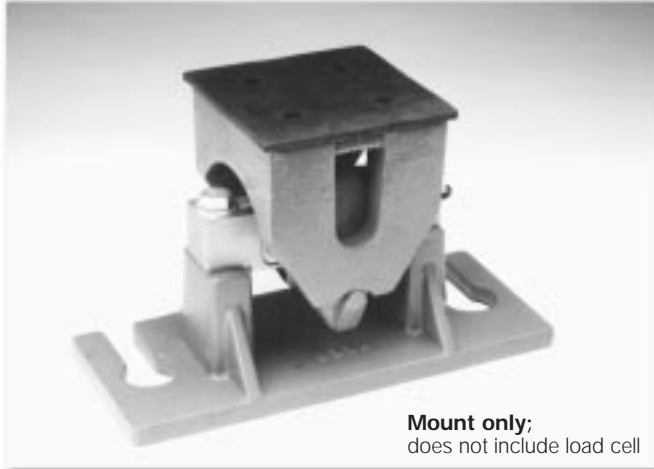
MVS ORDER INFORMATION

Load Rating	Part #	Suggested List Price
50,000-75,000lb (22,679.6-34,019.4kg)	46441	\$585.00

* Mount only; does not include load cell.

Weigh Modules

TSA Truck Scale Assembly, Sensortronics



The TSA truck scale assembly is designed for use with Rice Lake Weighing Systems RL75058, Sensortronics 65058, or Teda-Huntleigh 4158. The "Unilink" suspension design checks lateral movement of the assembly, while controlled floating of the scale deck is allowed. The effective integration of the TSA mount and the 65058 double-ended shear beam load cell eliminates the need for troublesome check rods, links, expansion assemblies and other peripheral hardware.

APPLICATIONS:

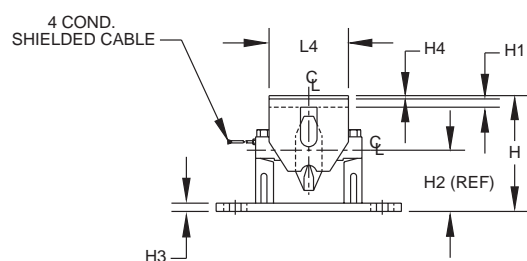
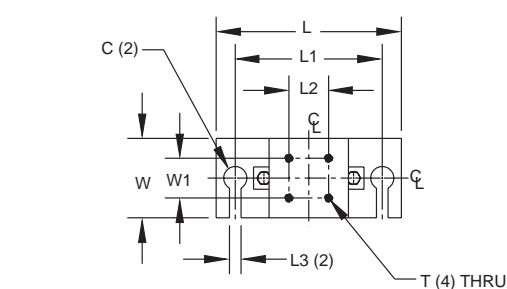
- Truck, track, horizontal tank or general purpose
- From light-duty livestock to heavy-duty vehicle scales

STANDARD FEATURES:

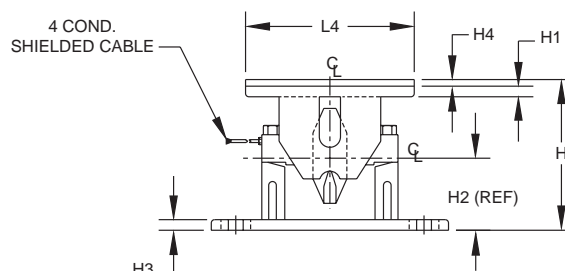
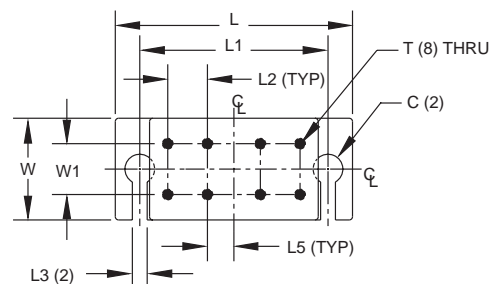
- Capacities: 10,000-75,000 lb (4535.9-34,019.4 kg)
- Constructed of cast steel and iron with primer coating
- Unique high-performance "Unilink" suspension system
- Center-loaded double-ended shear beam design
- Self-checking design
- Rubber pad provided for mounting

OPTIONAL FEATURES:

- NTEP-certified load cells available for 1:10,000d, Class IIIL



10,000 lb-25,000 lb
(4535.9 kg-11,339.8 kg)



50,000 lb-75,000 lb
(22,679.6 kg-34,019.4 kg)

RATED CAPACITY	DIMENSIONS														T	W	W1
	C	H	H1	H2	H3	H4	L	L1	L2	L3	L4	L5					
lb/inches																	
10,000-25,000	1.75 DIA.	8.75	.62	4.62	.62	.25	14.00	11.00	3.00	.88	6.00	—	5/8-11 UNC-2B	6.00	3.00		
50,000-75,000	2.00 DIA.	11.00	.75	5.44	.75	.50	18.00	14.00	3.00	.88	12.75	2.00	3/4-10 UNC-2B	7.00	3.50		
kg/millimeters																	
4535.9-11,339.8	44.5 DIA.	222.3	15.7	117.3	15.7	6.4	355.6	279.4	76.2	22.4	152.4	—	5/8-11 UNC-2B	152.4	76.2		
22,679.6-34,019.4	50.8 DIA.	279.4	19.1	138.2	19.1	12.7	457.2	355.6	76.2	22.4	323.9	50.8	3/4-10 UNC-2B	177.8	88.9		

TSA ORDER INFORMATION

Load Rating	Part #	Suggested List Price
10,000-20,000-25,000lb (4535.9-9071.9-11,339.8kg)	17821	\$625.00
50,000-60,000-75,000lb (22,679.6-27,215.5-34,019.4kg)	17822	\$650.00

* Mount only; does not include load cell. See page 286 for Sensortronics load cell model 65058 specifications. See page 137 for Rice Lake Weighing Systems load cell model RL75058 specifications. See page 311 for Tedeo-Huntleigh load cell model 4158 specifications. See page 138 for HERMETIC RL75060 cell.

Weigh Modules

RL8500 HE

Stainless Steel, Hermetically Sealed, Rice Lake



This new innovative mounting assembly incorporates the load cell and mount into the same piece of hardware. The result is an extremely rugged, low-profile assembly that is capable of operating with very high performance levels in the worst of environmental conditions. This assembly is manufactured from stainless steel, and is hermetically sealed to prevent moisture intrusion. Since there is no bulky mounting hardware to deal with, the installation of the product is quick and easy. Additional features include 300% overload capabilities, and a field replaceable, stainless steel braided cable assembly. The standard cable length is 25' (7.6m), but the product can be supplied with varying lengths of cable depending upon the application. Available in capacities from 10,000 to 60,000lb (4535.9 to 27,216.0kg), this product is sure to have a big impact in the marketplace.



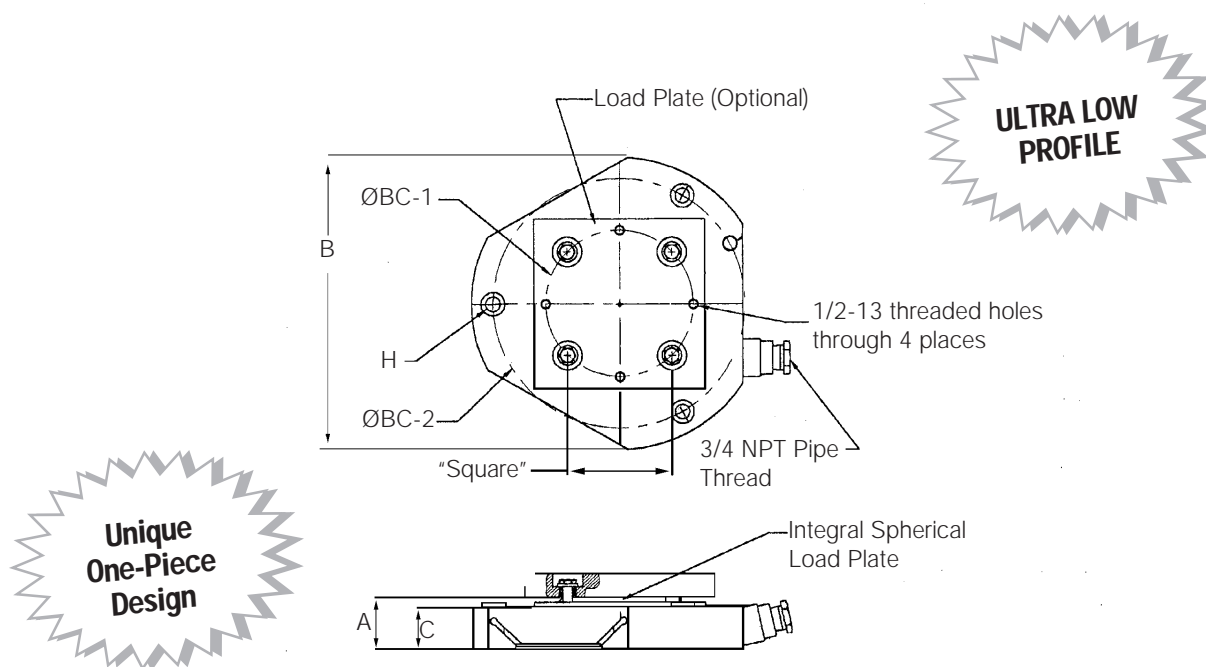
APPLICATIONS:

- Heavy-capacity tanks, blenders, bins and hoppers
- Chemical blending/batching and mixing

STANDARD FEATURES:

- Capacities from 10,000-60,000 lb
- Stainless steel
- Hermetically sealed
- Moment corrected
- Low profile
- 300% compression overload protection
- Easy installation
- Field-replaceable, stainless steel overbraid cable
- IP66/68

RL8500HE Specifications



RATED CAPACITY	DIMENSIONS						
	A	B	C	SQUARE	BC-1	BC-2	H
lb/inches							
10,000-30,000	2.185	12.00	1.74	4.00	5.66	10.25	.781
50,000-60,000	2.750	15.50	2.25	5.50	7.76	13.30	.781
kg/millimeters							
4535.9-13,607.8	55.5	304.8	44.2	101.6	143.8	260.4	19.8
22,679.6-27,215.5	69.9	393.7	57.2	139.7	197.1	337.8	19.8

SPECIFICATIONS:

Full Scale Output:	2.0 mV/V
Bridge Resistance:	1000 ohms, nominal with voltage applied
Material/Finish:	Stainless steel
Temperature:	Compensated range 0°F to 150°F/-18°C to 65°C
Safe Overload:	300% Full scale
Safe Sideload:	200% Full scale
Rated Excitation:	10V DC (15V maximum)
Nonlinearity:	0.03% Full scale
Hysteresis:	0.03% Full scale
Insulation Resistance:	1000 megohms
Seal Type:	Hermetically sealed, IP66/68
Cable Length:	25' (7.6m) Stainless steel overbraid
Cable Color Code:	Red + Excitation Black - Excitation Green + Signal White - Signal
Warranty:	2 years

RL8500HE ORDER INFORMATION

Load Rating	Part #	Suggested List Price
RL8500HE		
10,000 lb (4535.9kg)	53346	\$2,195.00
15,000 lb (6803.9kg)	53347	\$2,195.00
20,000 lb (9071.9kg)	53348	\$2,195.00
25,000 lb (11,339.8kg)	53349	\$2,195.00
30,000 lb (13,607.8kg)	53350	\$2,195.00
50,000 lb (22,679.6kg)	53351	\$2,195.00
60,000 lb (27,215.5kg)	53352	\$2,195.00
Replacement Cable	63121	\$125.00

Weigh Modules

RL8000 HE

Stainless Steel, Hermetically Sealed, Rice Lake



This is the miniature version of the RL8500HE and features all of the same benefits. This new innovative mounting assembly incorporates the load cell and mount into the same piece of hardware. The result is an extremely rugged, low-profile assembly that is capable of operating with very high performance levels in the worst of environmental conditions. This assembly is manufactured from stainless steel, and is hermetically sealed to prevent moisture intrusion. Since there is no bulky mounting hardware to deal with, the installation of the product is quick and easy. The capacity range on this version is 250 to 5,000lb (113.4 to 2268.0kg).



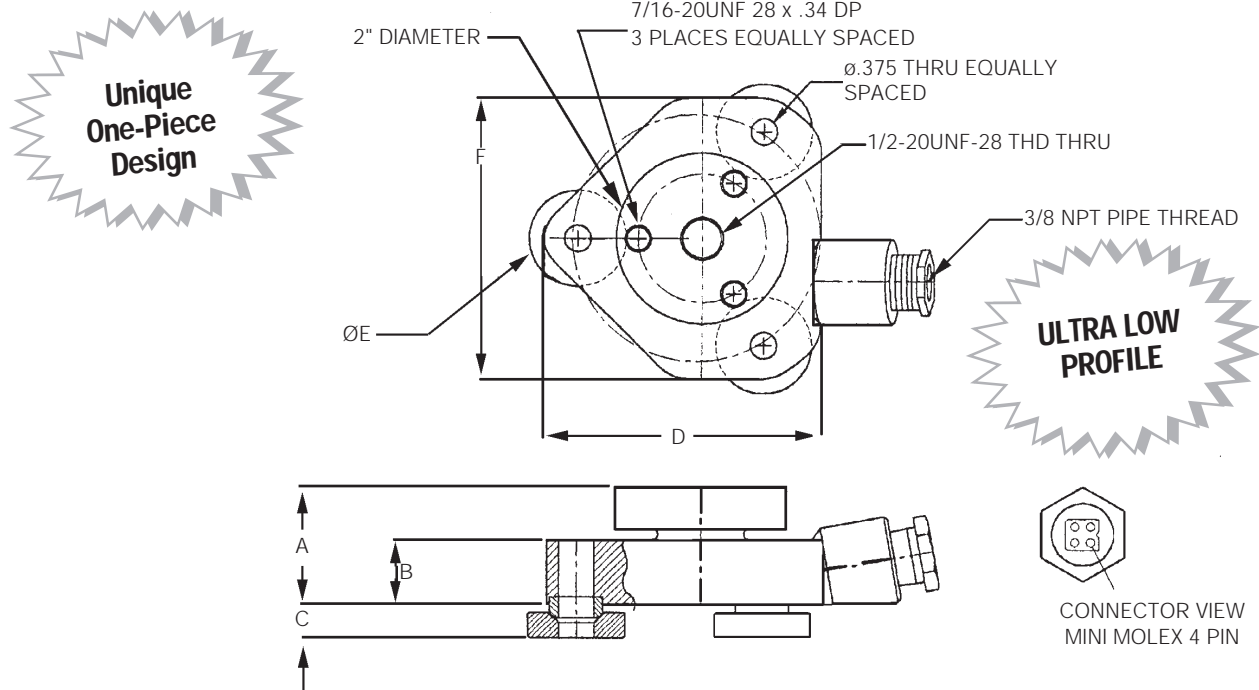
APPLICATIONS:

- Light- to medium-capacity tanks, bins and hoppers
- Chemical blending, batching and mixing

STANDARD FEATURES:

- Capacities from 250-5,000 lb
- Stainless steel
- Hermetically sealed
- Moment corrected
- Low profile
- 300% compression overload protection
- Easy installation
- Field-replaceable, stainless overbraid cable
- IP66/68

RL8000HE Specifications



RATED CAPACITY	DIMENSIONS					
	A	B	C	D	E	F
lb/inches						
250-5000	1.38	.75	.40	3.22	1.13	3.28
kg/millimeters						
113.4-2268.0	35.1	19.1	10.2	81.8	28.7	83.3

SPECIFICATIONS:

Full Scale Output:	2.0 mV/V
Bridge Resistance:	1000 ohms, nominal with voltage applied
Material/Finish:	Stainless steel
Temperature:	Compensated range 0°F to 150°F/-18°C to 65°C
Safe Overload:	300% Full scale
Safe Sideload:	200% Full scale
Rated Excitation:	10V DC (15V maximum)
Nonlinearity:	0.03% Full scale
Hysteresis:	0.03% Full scale
Insulation Resistance:	1000 megohms
Seal Type:	Hermetically sealed, IP66/68
Cable Length:	25' (7.6m) Stainless steel overbraid
Cable Color Code:	Red + Excitation Black - Excitation Green ... + Signal White - Signal

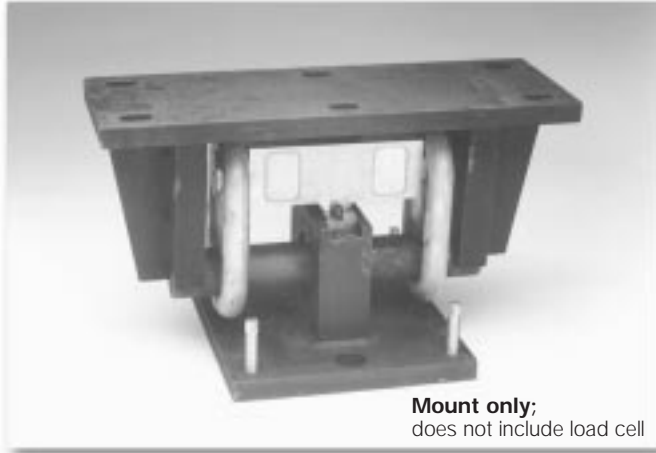
RL8000HE ORDER INFORMATION

Load Rating	Part #	Suggested List Price
RL8000HE		
250 lb (113.4kg)	53353	\$795.00
500 lb (226.8kg)	53354	\$795.00
1000 lb (453.6kg)	53355	\$795.00
2500 lb (1134.0kg)	53356	\$795.00
5000 lb (2268.0kg)	53357	\$795.00
Replacement Cable	63121	\$125.00

Weigh Modules

TRANSLINK™

Parallel Link Truck Scale Assembly, Rice Lake Weighing Systems



Mount only;
does not include load cell

The TRANSLINK parallel link truck scale assembly is designed for use with Rice Lake Weighing Systems' RL75223 and RL75040A, Revere Transducer's 5223 or Sensortronics' 65040A load cells. This design allows the scale platform to move freely in all directions in a horizontal plane while causing the platform to self-center because of the pendulous action of the links.

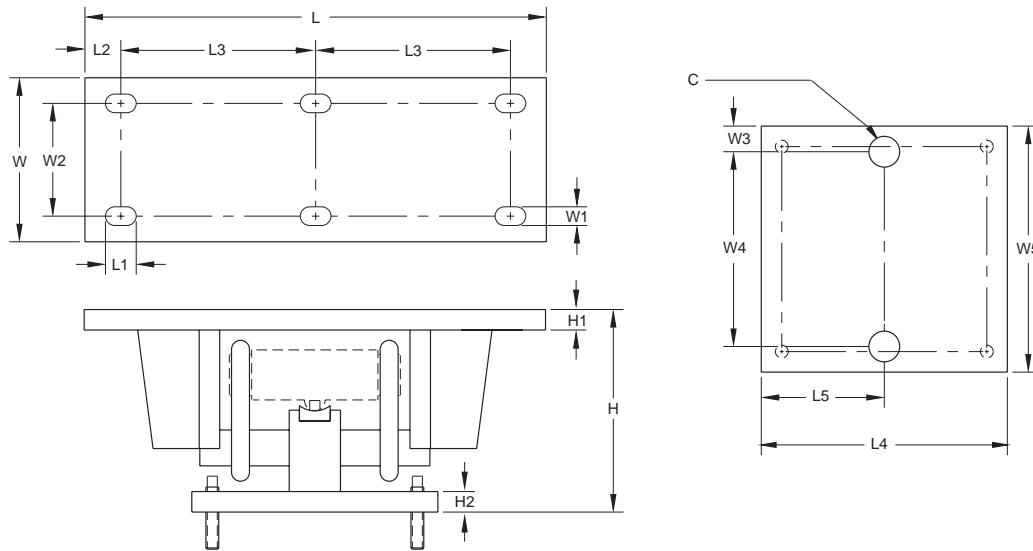
The unique parallel link design eliminates the need for costly and troublesome checkrods. Simply install platform bumpers and forget about over-travel. This mount is ideal for heavy-capacity weigh bridges.

APPLICATIONS:

- Truck scale mount
- Heavy-capacity horizontal tanks

STANDARD FEATURES:

- Capacities: 25,000-100,000lb (11,339.8-45,359.4kg)
- Center-supported, end-loaded double-ended shear beam design
- Free movement in all directions in the horizontal plane with virtually no friction
- Links provide optimal loading conditions for the cell
- Completely self-centering
- Requires no check rods
- Utilizes cells with 3mV/V output
- Models available for RLWS RL75223 and RL75040A, RTI 5223 and Sensortronics 65040A load cells



RATED CAPACITY	DIMENSIONS															
	C	H	H1	H2	L	L1	L2	L3	L4	L5	W	W1	W2	W3	W4	W5
lb/inches																
50,000-100,000 (RL75223, 5223)	1.50	12.93	1.00	1.00	22.50	1.50	1.75	9.50	11.75	5.88	7.75	.91	5.25	1.25	9.25	11.75
25,000-40,000 (RL75040A, 65040A)	1.50	9.88	1.00	1.00	18.50	1.50	1.75	7.50	11.75	5.88	7.75	.91	5.25	1.25	9.25	11.75
50,000-75,000 (RL75040A, 65040A)	1.50	12.82	1.00	1.00	22.50	1.50	1.75	9.50	11.75	5.88	7.75	.91	5.25	1.25	9.25	11.75
kg/millimeters																
22,679.6-45,359.4	38.1	328.4	25.4	25.4	571.5	37.5	44.5	241.3	298.5	149.4	196.9	23.1	133.4	31.8	235.0	298.4
11,339.8-18,143.7	38.1	251.0	25.4	25.4	469.9	37.5	44.5	190.5	298.5	149.4	196.9	23.1	133.4	31.8	235.0	298.4
22,679.6-34,019.4	38.1	325.6	25.4	25.4	571.5	37.5	44.5	241.3	298.5	149.4	196.9	23.1	133.4	31.8	235.0	298.4

TRANSLINK ORDER INFORMATION

Load Rating	Part #	Suggested List Price
For use with RL75223, 5223 Load Cells:		
50,000-100,000lb (22,679.6-45,359.4kg)	17970	\$675.00
For use with RL75040A, 65040A Load Cells:		
25,000-40,000lb (11,339.8-18,143.7kg)	17971	\$675.00
50,000-75,000lb (22,679.6-34,019.4kg)	17972	\$675.00

* Mount only; does not include load cell. See page 139 for load cell model RL75223 (RLWS), page 140 for load cell model RL75040A (RLWS), page 248 for load cell model 5223 (RTI) and page 289 for model 65040A (Sensortronics) specifications.

Weigh Modules

Motor Truck Scale Electronic Conversion Kit Rice Lake Weighing Systems



Full electronic performance can be achieved at a fraction of the cost of a new scale and pit. The MOTOR TRUCK SCALE (MTS) ELECTRONIC CONVERSION KIT is designed to transform an existing scale pit and weighbridge into a fully-electronic vehicle scale. Designed for quick installation without removing the platform or reconfiguring the pit, the conversion kit can often be installed in a matter of days, minimizing downtime. This ease of installation is important when considering installations where it is not feasible to completely remove the existing scale.

The IQ plus® 310A and IQ plus® 800 digital indicators are type approved for 10,000 divisions, as are the load cells.

Consult your local Weights & Measures Authorities for local legal-for-trade requirements.

STANDARD FEATURES:

- Cost- and time-efficient installation; no need to remove weighbridge
- Converts existing scale capacities of 40,000-300,000lb (18,143.7-90,718.7kg)
- 4-, 6- or 8-mount kits for 2-, 3- or 4-section conversions
- Translink™ heavy-capacity mounting assemblies
- Free movement in all directions in the horizontal plane with virtually no friction
- Completely self-centering
- Indicator and load cells are NTEP-certified 1:10,000 divisions, Class III L
- Requires no check rods
- Capacity per mount: 25,000-100,000 lb (11,339.8-45,359.4kg)
- Utilizes cells with 3mV/V output

Complete Kit Includes:

- 1 IQ plus 310A or IQ plus 800 digital weight indicator
- 1 TM-295 ticket printer with interface cable
- 1 JB-808S NEMA 4X signal-trim junction box with individual and section trimming capability (6- and 8-mount kits) or 1 EL211A NEMA 4X signal-trim junction box (4-mount kits)
- 1 UJB3T6 DC transient protector
- 4, 6 or 8 Translink mounting assemblies with RL75040A load cells
- 100' of Hostile Environment EL147HE SURVIVOR® load cell cable

APPLICATIONS:

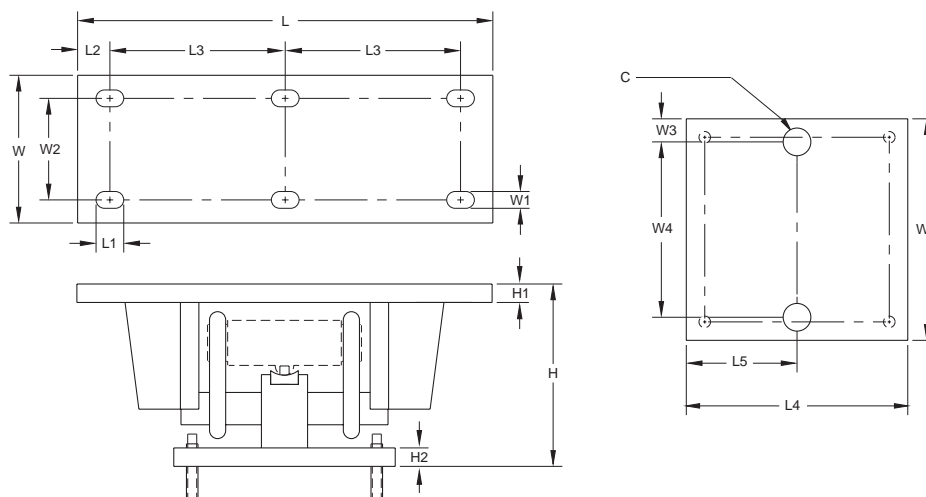
- Updating existing mechanical motor truck scales
- Replacing unsatisfactory electronic motor truck scales
- Conversion of heavy-capacity scales into fully-electronic vehicle scales where the existing scale cannot be removed

OPTIONAL FEATURES:

- Custom height available; consult Factory.
- RLWS RL75223 hermetically-sealed, Sensortronics 65040A or RTI 5223 load cells; consult Factory
- Available without printer and indicator

MTS Conversion Kit Specifications

**Complete Kit!
Compare
& Save!**



RATED CAPACITY	DIMENSIONS															
	C	H*	H1	H2	L	L1	L2	L3	L4	L5	W	W1	W2	W3	W4**	W5
lb/inches																
50,000-100,000 (RL75223)	1.50	12.93	1.00	1.00	22.50	1.50	1.75	9.50	11.75	5.88	7.75	.91	5.25	1.25	9.25	11.75
25,000-40,000 (RL75040A)	1.50	9.88	1.00	1.00	18.50	1.50	1.75	7.50	11.75	5.88	7.75	.91	5.25	1.25	9.25	11.75
50,000-75,000 (RL75040A)	1.50	12.82	1.00	1.00	22.50	1.50	1.75	9.50	11.75	5.88	7.75	.91	5.25	1.25	9.25	11.75
kg/millimeters																
22,679.6-45,400.00 (RL75223)	38.1	328.4	25.4	25.4	571.5	37.5	44.5	241.3	298.5	149.4	196.9	23.1	133.4	31.8	235.0	298.45
11,339.8-18,143.7 (RL75040A)	38.1	251.0	25.4	25.4	469.9	37.5	44.5	190.5	298.5	149.4	196.9	23.1	133.4	31.8	235.0	298.45
22,679.6-34,019.4 (RL75040A)	38.1	325.6	25.4	25.4	571.5	37.5	44.5	241.3	298.5	149.4	196.9	23.1	133.4	31.8	235.0	298.45

* Custom heights available; consult Factory.

** Custom hole spacing for existing bolt patterns is available; consult Factory.

MTS COMPLETE KIT ORDER INFORMATION

Scale Capacity	Capacity Per Weigh Module	Part #	Suggested List Price
----------------	---------------------------	--------	----------------------

Kits Including Weigh Modules, IQ plus 310A and TM-295

4-Module Kits:

40,000 lb (18,143.7 kg)	25,000 lb (11,339.8 kg)	30519	\$7,495.00
60,000 lb (27,215.6 kg)	40,000 lb (18,143.7 kg)	30521	\$7,995.00

6-Module Kits:

100,000 lb (45,359.4 kg)	50,000 lb (22,679.6 kg)	30523	\$11,595.00
120,000 lb (54,431.2 kg)	60,000 lb (27,215.6 kg)	30525	\$11,595.00

8-Module Kits:

120,000 lb (54,431.2 kg)	60,000 lb (27,215.6 kg)	30527	\$14,695.00
200,000 lb (90,718.7 kg)	75,000 lb (34,019.4 kg)	30529	\$14,695.00

Kits Including Weigh Modules, IQ plus 800 and TM-295

4-Module Kits:

60,000 lb (27,215.6 kg)	40,000 lb (18,143.7 kg)	30520	\$8,295.00
-------------------------------	------------------------------	-------------	------------

6-Module Kits:

100,000 lb (45,359.4 kg)	50,000 lb (22,679.6 kg)	30522	\$11,895.00
120,000 lb (54,431.2 kg)	60,000 lb (27,215.6 kg)	30524	\$11,895.00

8-Module Kits:

120,000 lb (54,431.2 kg)	60,000 lb (27,215.6 kg)	30526	\$14,995.00
200,000 lb (90,718.7 kg)	75,000 lb (34,019.4 kg)	30528	\$14,995.00

MTS WEIGH MODULES ORDER INFORMATION

Scale Capacity	Capacity Per Weigh Module	Part #	Suggested List Price
----------------	---------------------------	--------	----------------------

Kits Including Weigh Modules Only

4-Module Kits:

40,000 lb (18,143.7 kg)	25,000 lb (11,339.8 kg) ...	30513	\$5,895.00
60,000 lb (27,215.6 kg)	40,000 lb (18,143.7 kg) ...	30514	\$6,395.00

6-Module Kits:

100,000 lb (45,359.4 kg)	50,000 lb (22,679.6 kg) ...	30515	\$9,995.00
120,000 lb (54,431.2 kg)	60,000 lb (27,215.6 kg) ...	30516	\$9,995.00

8-Module Kits:

120,000 lb (54,431.2 kg)	60,000 lb (27,215.6 kg) ...	30517	\$12,995.00
200,000 lb (90,718.7 kg)	75,000 lb (34,019.4 kg) ...	30518	\$12,995.00
300,000lbSD (136,078.1 kg) .	100,000 lb (45,359.4 kg) ...	30512	\$15,995.00

SD denotes Super Duty, 100,000 lb (45,359.4 kg) capacity hermetically-sealed load cells

Weigh Modules

MagnaMount[®]

Tank, Truck & Railroad Track Assembly, Rice Lake Weighing Systems



The MagnaMount tank, truck and railroad scale assembly is designed for use with Rice Lake Weighing Systems' RLCSP1 or Revere Transducer's CP1 or CSP1 load cells. The "Shielded Cell" load cell mounting assembly is a highly reliable design that shields the load cell from shock and side load effects, assuring accurate weighing even under adverse loading conditions.

APPLICATIONS:

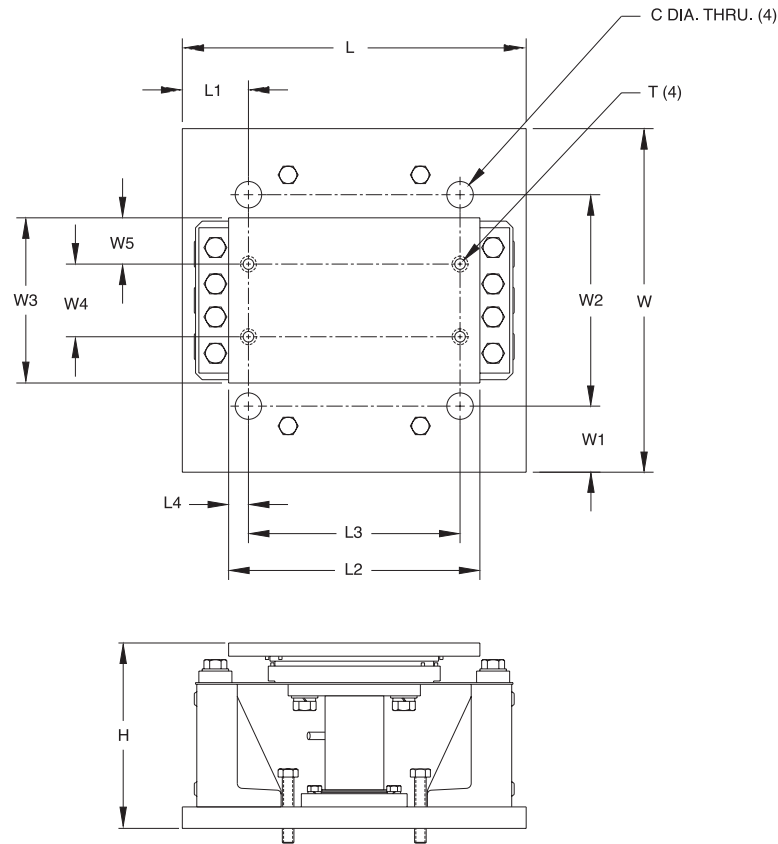
- Truck scale mount
- Heavy-capacity horizontal tanks
- Railroad track mount

STANDARD FEATURES:

- Capacities: 50,000, 100,000 and 200,000 lb (22,679.6, 45,359.4 and 90,718.7 kg)
- Protects load cell from shock and side loads
- Low-profile design
- High-strength load bearing plate made of high-grade carbon steel hardened to Rockwell C 48-54
- Teflon[®]-coated shock absorbers
- Compatible with Revere Transducer's CP1 and CSP1 and Rice Lake Weighing Systems' RLCSP1 NTEP-certified load cells

Teflon is a registered trademark of E.I. DuPont

MagnaMount® Specifications



Weigh Modules

RATED CAPACITY	DIMENSIONS														
	C	H	L	L1	L2	L3	L4	T	W	W1	W2	W3	W4	W5	
lb/inches															
50,000	1.25	7.39	13.00	1.75	11.25	8.50	1.37	3/4-10 UNC	12.00	1.75	8.50	8.00	4.50	1.75	
100,000	1.50	11.29	20.00	2.50	18.00	15.50	1.25	7/8-9 UNC	17.00	2.50	12.00	9.00	5.50	1.75	
200,000	2.00	14.10	26.00	5.00	19.00	16.00	1.50	1-8 UNC	26.00	5.00	16.00	12.50	5.50	3.50	
kg/millimeters															
22,679.6	31.8	187.7	330.2	44.5	285.8	241.3	34.8	3/4-10 UNC	304.8	44.5	215.9	203.2	114.3	44.5	
45,359.4	38.1	286.8	508.0	63.5	457.2	393.7	31.8	7/8-9 UNC	431.8	63.5	304.8	228.6	139.7	44.5	
90,718.7	50.8	358.1	660.4	127.0	482.6	406.4	38.1	1-8 UNC	660.4	127.0	406.4	317.5	139.7	88.9	

MAGNAMOUNT ORDER INFORMATION

Load Rating	Part #	Suggested List Price
50,000 lb (22,679.6 kg)	21723	\$795.00
100,000 lb (45,359.4 kg)	21724	\$1,095.00
200,000 lb (90,718.7 kg)	17974	\$1,895.00

* Mount only; does not include load cell. See page 250 for Revere Transducer's load cell model CP1, and page 251 for NTEP-certified load cell model CSP1 specifications. See page 141 for Rice Lake Weighing Systems' NTEP-certified load cell model RLCSP1.

Weigh Modules • Electronic Floor Scale Underdeck Kits

**COMPLETE
KITS**

Rice Lake Weighing Systems

Industrial Applications, Alloy Steel Load Cells

Kit Includes:

- (4) Celtron SQB alloy steel NTEP 5000 Divisions, Class III certified load cells
- (1) 4-channel signal trim junction box
- (4) Surefoot™ high-accuracy stainless steel support feet
- 20'6.1m EL147HE load cell cable
- (4) Mounting plates & (8) Load cell bolts



High-Precision Applications, Alloy Steel NTEP-certified Load Cells

Kit Includes:

- (4) RL30000 alloy steel NTEP 5000 Divisions, Class III certified load cells
- (1) 4-channel signal trim junction box
- (4) Surefoot™ high-accuracy stainless steel support feet
- 20'6.1m EL147HE load cell cable
- (4) Mounting plates & (8) Load cell bolts

NOTES:

- For complete load cell specifications, see RL30000 on page 102.
- The use of NTEP-certified load cells in a scale base does not constitute approval of the completed base. Consult with local or state jurisdiction for compliance requirements.



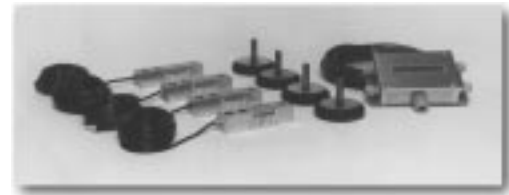
Chemical, Dry Corrosive & Non-washdown Applications, Stainless Steel Load Cells

Kit Includes:

- (4) RL39123 stainless steel load cells
- (1) EL604STA stainless steel NEMA 4X junction box
- (4) Surefoot™ high-accuracy stainless steel support feet
- 20'6.1m EL147HE load cell cable
- (4) Mounting plates & (8) Load cell bolts

NOTES:

- For complete load cell specifications, see RL39123 on page 104.



Washdown & Wet Corrosive Applications, Welded Seal Stainless Steel Load Cells

Kit Includes:

- (4) RL35083 welded-seal stainless steel load cells
- (1) EL604STA stainless steel NEMA 4X junction box
- (4) Surefoot™ high-accuracy stainless steel support feet
- 20'6.1m EL147HE load cell cable
- (4) Mounting plates & (8) Load cell bolts

NOTES:

- For complete load cell specifications, see RL35083 on page 109.



UNDERDECK KITS ORDER INFORMATION

Load Cell/ Base Capacity	Part #	Suggested List Price
Kits Including Celtron SQB NTEP-certified Alloy Steel Load Cells:		
1000 lb for 2000 lb base (453.6 kg for 907.2 kg base).....	26436	\$1,095.00
2500 lb for 5000 lb base (1134.0 kg for 2268.0 kg base).. <td>26437</td> <td>\$1,095.00</td>	26437	\$1,095.00
4000 lb for 10,000 lb base (1814.4 kg for 4535.9 kg base).. <td>26438</td> <td>\$1,095.00</td>	26438	\$1,095.00
Kits Including RL30000 Alloy Steel NTEP-certified Load Cells:		
1000 lb for 2000 lb base (453.6 kg for 907.2 kg base).....	19032	\$1,175.00
2500 lb for 5000 lb base (1134.0 kg for 2268.0 kg base).. <td>19033</td> <td>\$1,175.00</td>	19033	\$1,175.00
4000 lb for 10,000 lb base (1814.4 kg for 4535.9 kg base).. <td>19034</td> <td>\$1,175.00</td>	19034	\$1,175.00
Kits Including RL39123 Stainless Steel Load Cells:		
1000 lb for 2000 lb base (453.6 kg for 907.2 kg base).....	19035	\$1,375.00
2500 lb for 5000 lb base (1134.0 kg for 2268.0 kg base).. <td>19036</td> <td>\$1,375.00</td>	19036	\$1,375.00
4000 lb for 10,000 lb base (1814.4 kg for 4535.9 kg base).. <td>19037</td> <td>\$1,375.00</td>	19037	\$1,375.00
Kits Including RL35083 Welded-Seal Load Cells:		
1000 lb for 2000 lb base (453.6 kg for 907.2 kg base).....	19038	\$1,595.00
2500 lb for 5000 lb base (1134.0 kg for 2268.0 kg base).. <td>19039</td> <td>\$1,595.00</td>	19039	\$1,595.00
4000 lb for 10,000 lb base (1814.4 kg for 4535.9 kg base).. <td>19040</td> <td>\$1,595.00</td>	19040	\$1,595.00

Scale "Underdeck" Kits are provided to meet the application needs of the electronic floor scale producer and are an easy source for rebuilding existing floor scales. Underdeck kits are provided with mounting plates and load cell bolts for easy installation.

To select the proper kit for your use, determine your application—high precision, chemical or dry corrosive, or washdown and wet corrosive—then select the appropriate kit.