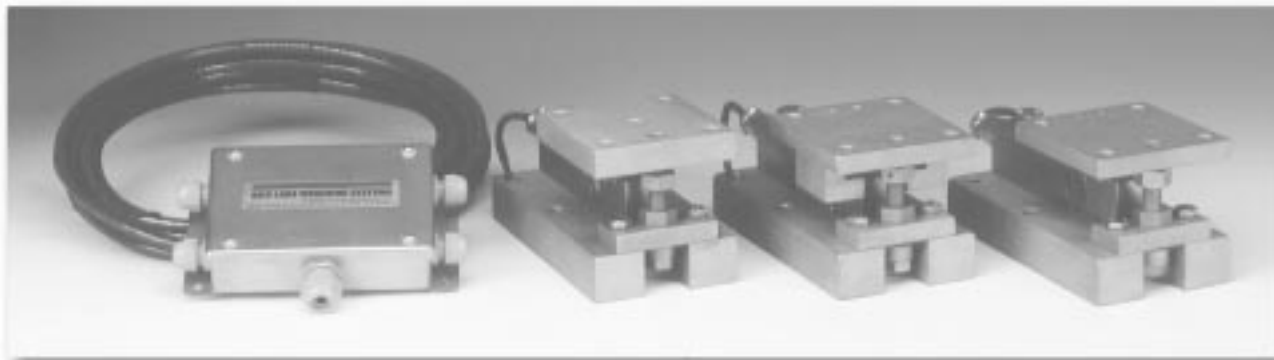


SURVIVOR® HE Weigh Modules

Paramounts® Medium-Capacity Weigh Module Systems



Consisting of three different weigh module designs, the Paramounts system offers superior accuracy, even in applications with extreme expansion, contraction and vibration. The fixed-pin module acts as the vessel's primary reference point, enabling rotation. A single side-stop module is then paired with the fixed-pin module to permit mechanical expansion and contraction in one direction. The vessel then becomes a high-accuracy weighing system with the addition of one to six free-sliding modules. This system offers the free motion necessary to eliminate unwanted mechanical side loads, as well as the strength needed to keep the vessel in check. This gives the Paramounts system its industry-leading reputation for exceptional accuracy in unfriendly environments.

Integral jacking/shipping bolts enhance safety by preventing accidental lift-off, facilitate quick field removal of load cells and eliminate load cell damage during transportation. Matched outputs and field-replaceable cable simplify installation and enhance serviceability.

As a system, Paramounts represent the ultimate combination of convenience, accuracy and control.

Load Cell Certifications:



IP66/68

APPLICATIONS:

- Medium-capacity, high-vibration mixers, blenders and tanks in temperature extremes
- Chemical batching/blending
- Pharmaceutical processing
- Food processing
- Petroleum refining and batching

Complete Kit Includes:

- 1 EL604ETA NEMA 4X stainless steel excitation trim junction box
- 1 fixed-pin module, 1 side-stop module, and 1 or 2 free-sliding assemblies. Each module is complete with a FLINTEC SB4 or SB10 (225 and 520 lb) stainless steel hermetically-sealed load cell
- 25' of our Hostile Environment EL147HE SURVIVOR® load cell cable

STANDARD FEATURES:

- Capacities (per module): 225 lb-22,500 lb (1kN/102.1 kg-100kN/10,205.9 kg)
- All stainless steel construction
- Bolt-in-place design; module bolts directly to tank leg without requiring additional load buttons or mounting plates
- Hermetically-sealed stainless steel load cells
- Load cell outputs are matched to $\pm 0.07\%$, minimizing maintenance costs
- Unique design allows for thermal expansion/contraction
- Low-profile, self-checking design
- Jacking screw allows empty vessel to be lifted clear of load cell for maintenance
- Unique patented blind load hole technology minimizes unwanted side and eccentric loading
- Vessel is free to slide laterally on Teflon®-coated surfaces

OPTIONAL FEATURES:

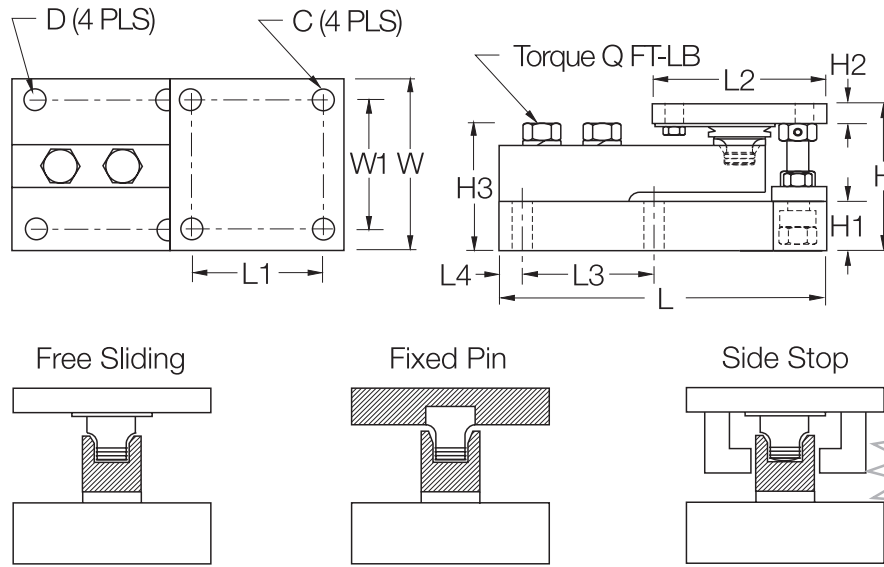
- NTEP-certified load cells available: capacities 1125-11,250 lb
- OIML-certified load cells available: capacities 1125-11,250 lb

Teflon is a registered trademark of E.I. DuPont

Paramounts Stainless Steel Specifications

**Complete Kit!
Compare
& Save!**

SURVIVOR Weigh Modules



**New
Lower Price**

RATED CAPACITY		DIMENSIONS													Q	
		C	D	H	H1	*H2	**H2	H3	L	L1	L2	L3	L4	W	W1	(FT- LB)
lb/inches																
225 - 520	(1 - 2.3KN)	.375	.437	3.49	1.00	.50	.75	2.98	7.51	3.00	4.00	3.00	.50	4.00	3.00	65
1125 - 5200	(5 - 23KN)	.437	.437	3.58	1.25	.50	.75	3.06	7.51	3.00	4.00	3.00	.50	4.00	3.00	65
11,250	(50KN)	.562	.562	4.66	1.50	.62	1.00	4.09	9.19	3.87	5.00	3.87	.56	5.00	3.87	295
22,500	(100KN)	.688	.688	6.41	2.00	.75	1.25	5.73	11.46	4.75	6.00	4.75	.69	6.00	4.75	515
kg/millimeters																
102.2 - 236.1		9.5	11.1	88.6	25.4	12.7	19.1	75.7	190.8	76.2	101.6	76.2	12.7	101.6	76.2	
510.8 - 2360		11.1	11.1	90.9	31.8	12.7	19.1	77.7	190.8	76.2	101.6	76.2	12.7	101.6	76.2	
5107.5		14.3	14.3	118.4	38.1	15.7	25.4	103.9	233.4	98.3	127.0	98.3	14.2	127.0	98.3	
10,215.0		17.5	17.5	162.8	50.8	19.1	31.8	145.5	291.1	120.7	152.4	120.7	17.5	152.4	120.7	

KN = Kilonewtons

*Side Stop and Free Sliding units.

**Fixed Pin units.

PARAMOUNTS NTEP/OIML ORDER INFORMATION

Load Rating (per module)	Part #	Suggested List Price
NTEP/OIML C3 3-Module Kits:		
1125 lb (5KN/510.8 kg)	29883	\$3,565.00
2250 lb (10KN/1021.5 kg)	29884	\$3,565.00
5200 lb (23KN/2360.8 kg)	29885	\$3,565.00
11,250 lb (50KN/5107.5 kg)	29886	\$4,795.00
NTEP/OIML C3 4-Module Kits:		
1125 lb (5KN/510.8 kg)	29879	\$4,665.00
2250 lb (10KN/1021.5 kg)	29880	\$4,665.00
5200 lb (23KN/2360.8 kg)	29881	\$4,665.00
11,250 lb (50KN/5107.5 kg)	29882	\$6,020.00

PARAMOUNTS NON-NTEP ORDER INFORMATION

Load Rating (per module)	Part #	Suggested List Price
Non-NTEP 3-Module Kits:		
225 lb (1KN/102.2 kg)	38203	\$3,215.00
520 lb (2.3KN/236.1 kg)	38207	\$3,215.00
1125 lb (5KN/510.8 kg)	17991	\$3,365.00
2250 lb (10KN/1021.5 kg)	17992	\$3,365.00
5200 lb (23KN/2360.8 kg)	17993	\$3,365.00
11,250 lb (50KN/5107.5 kg)	17994	\$4,420.00
22,500 lb (100KN/10,215.0 kg)	17995	\$5,275.00
Non-NTEP 4-Module Kits:		
225 lb (1KN/102.2 kg)	38204	\$4,215.00
520 lb (2.3KN/236.1 kg)	38208	\$4,215.00
1125 lb (5KN/510.8 kg)	17998	\$4,400.00
2250 lb (10KN/1021.5 kg)	17999	\$4,400.00
5200 lb (23KN/2360.8 kg)	18000	\$4,400.00
11,250 lb (50KN/5107.5 kg)	18001	\$5,525.00
22,500 lb (100KN/10,215.0 kg)	18002	\$6,925.00

USA: 800-472-6703 • Canada/Mexico: 800-321-6703 • International: 715-234-9171

Prices & Specifications subject to change without notice