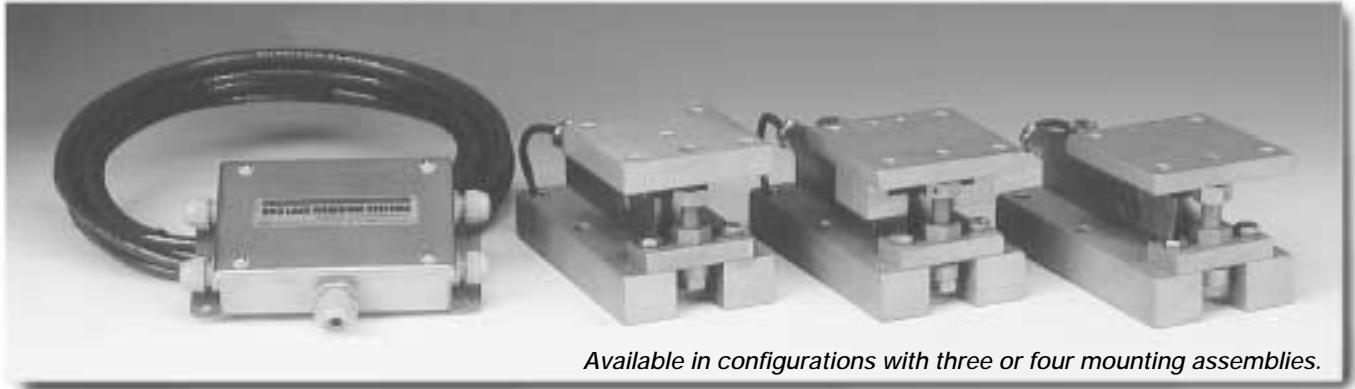


# Weigh Modules • Tank and Hopper Kits

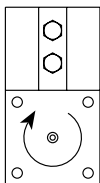
## Paramounts® EP (Environmentally-Protected Load Cells) Mild Steel, Light- to Medium-Capacity Tank Weighing Systems



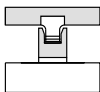
Available in configurations with three or four mounting assemblies.

The Paramounts EP system offers all the design advantages of the Paramounts system in applications where the extensive sealing of the SB4 load cell is not necessary. Paramounts EP provides a low-cost alternative for the superior mechanical loading system found in the standard Paramounts. Economy and performance are in one complete weighing system.

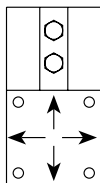
Load Cell Certifications:



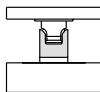
A: FIXED PIN



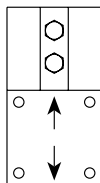
Fixed-Pin Mount



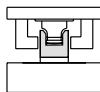
B: FREE SLIDING



Free-Sliding Mount



C: SIDE STOP



Side-Stop Mount

Free-Sliding Module with Flintec SB5 bending beam load cell. Refer to page 200 for load cell specifications.



### Complete Kit Includes:

- 1 EL604ETA NEMA 4X stainless steel excitation trim junction box
- 1 fixed-pin module, 1 side-stop module, and 1 or 2 free-sliding assemblies. Each module is complete with a FLINTEC SB5 NTEP-certified 1:5000d, Class III, stainless steel environmentally-protected load cell
- 25' of our Hostile Environment EL147HE SURVIVOR® load cell cable

### APPLICATIONS:

- Light- to medium-capacity tanks and hoppers
- High-vibration mixers and blenders
- Process measurement and control

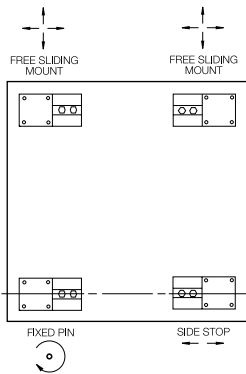
### STANDARD FEATURES:

- Capacities (per module): 1125 lb-22,500 lb (1kN/102.1 kg-100kN/10,205.9 kg)
- NTEP-certified load cells
- Unique design allows for thermal expansion/contraction
- Jacking screw allows empty vessel to be lifted clear of load cell for maintenance
- Unique blind load hole eliminates unwanted side and eccentric loads
- Vessel is free to slide laterally on Teflon®-coated surfaces
- Load cell outputs are matched to  $\pm 0.07\%$  allowing replacement without further calibration

Teflon is a registered trademark of E.I. DuPont

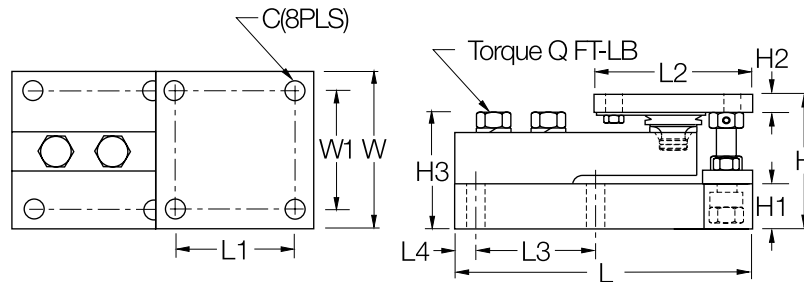
# Paramounts EP Specifications

**Complete Kit!  
Compare  
& Save!**



## VESSEL ARRANGEMENT

When arranged as illustrated, the vessel is fixed at one corner but is able to slide freely as indicated. This ensures that there is minimal side loading on the cells and at the same time the vessel is self-checking. The unique, patented blind load hole technology used in these mounts introduces the load at the neutral axis of the load cell which helps minimize the effects of side loads.



RATED CAPACITY	DIMENSIONS											Q (FT-LB)			
	C	H	H1	*H2	**H2	H3	L	L1	L2	L3	L4		W	W1	
<b>lb/inches</b>															
1125 - 5200 (5 - 23KN)	.437	3.58	1.25	.50	.75	3.06	7.51	3.00	4.00	3.00	.50	4.00	3.00	65	
11,250 (50KN)	.562	4.66	1.50	.62	1.00	4.09	9.19	3.87	5.00	3.87	.56	5.00	3.87	295	
22,500 (100KN)	.688	6.41	2.00	.75	1.25	5.73	11.46	4.75	6.00	4.75	.69	6.00	4.75	515	
<b>kg/millimeters</b>															
510.8 - 2360	11.1	90.9	31.8	12.7	19.1	77.7	190.8	76.2	101.6	76.2	12.7	101.6	76.2		
5107.5	14.3	118.4	38.1	15.7	25.4	103.9	233.4	98.3	127.0	98.3	14.2	127.0	98.3		
10,215.0	17.5	162.8	50.8	19.1	31.8	145.5	291.1	120.7	152.4	120.7	17.5	152.4	120.7		

KN = Kilonewtons. 1 KN = 224.8089 lb  
\*Side Stop and Free Sliding units.  
\*\*Fixed Pin units.

## PARAMOUNTS EP MILD STEEL ORDER INFORMATION

Load Rating (per module)	Part #	Suggested List Price
<b>NTEP 3-Module Kits:</b>		
1125 lb (5KN/510.8 kg)	33683	\$1,995.00
2250 lb (10KN/1021.5 kg)	33682	\$1,995.00
4500 lb (20KN/2041.2 kg)	33681	\$1,995.00
11,250 lb (50KN/5107.5 kg)	33680	\$2,195.00
<b>NTEP 4-Module Kits:</b>		
1125 lb (5KN/510.8 kg)	33678	\$2,665.00
2250 lb (10KN/1021.5 kg)	33677	\$2,665.00
4500 lb (20KN/2041.2 kg)	33676	\$2,665.00
11,250 lb (50KN/5107.5 kg)	33675	\$3,395.00
<b>Non-NTEP 3-Module Kit:</b>		
22,500 lb (100KN/10,205.8 kg)	33679	\$2,925.00
<b>Non-NTEP 4-Module Kit:</b>		
22,500 lb (100KN/10,215.0 kg)	33674	\$4,150.00

Weigh Modules