

Weigh Modules

MagnaMount[®]

Tank, Truck & Railroad Track Assembly, Rice Lake Weighing Systems



Mount only;
does not include load cell

The MagnaMount tank, truck and railroad scale assembly is designed for use with Rice Lake Weighing Systems' RLCSP1 or Revere Transducer's CP1 or CSP1 load cells. The "Shielded Cell" load cell mounting assembly is a highly reliable design that shields the load cell from shock and side load effects, assuring accurate weighing even under adverse loading conditions.

APPLICATIONS:

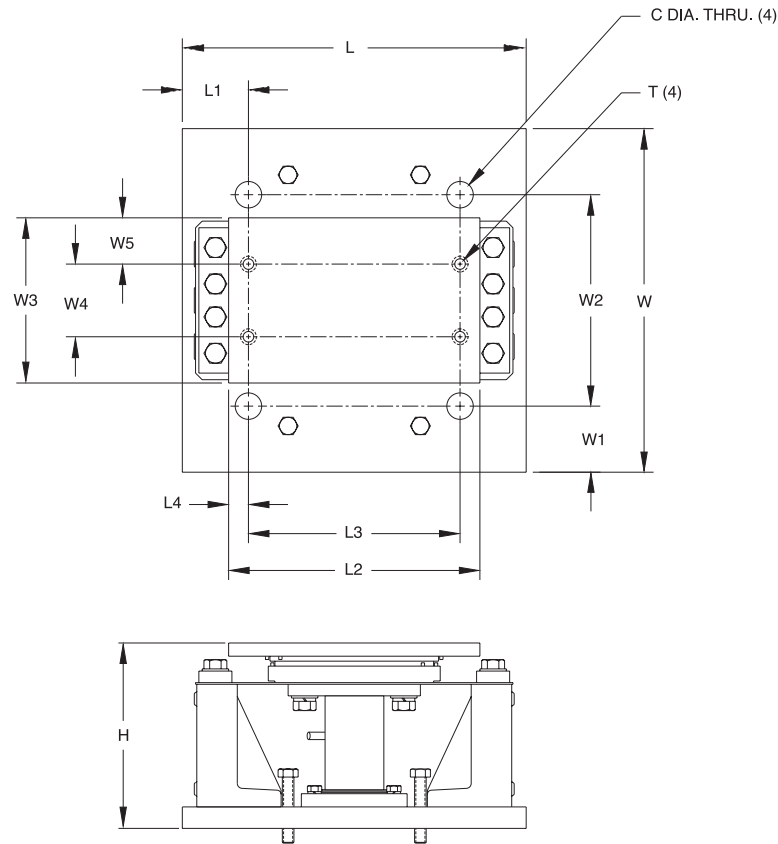
- Truck scale mount
- Heavy-capacity horizontal tanks
- Railroad track mount

STANDARD FEATURES:

- Capacities: 50,000, 100,000 and 200,000 lb (22,679.6, 45,359.4 and 90,718.7 kg)
- Protects load cell from shock and side loads
- Low-profile design
- High-strength load bearing plate made of high-grade carbon steel hardened to Rockwell C 48-54
- Teflon[®]-coated shock absorbers
- Compatible with Revere Transducer's CP1 and CSP1 and Rice Lake Weighing Systems' RLCSP1 NTEP-certified load cells

Teflon is a registered trademark of E.I. DuPont

MagnaMount® Specifications



Weigh Modules

RATED CAPACITY	DIMENSIONS														
	C	H	L	L1	L2	L3	L4	T	W	W1	W2	W3	W4	W5	
lb/inches															
50,000	1.25	7.39	13.00	1.75	11.25	8.50	1.37	3/4-10 UNC	12.00	1.75	8.50	8.00	4.50	1.75	
100,000	1.50	11.29	20.00	2.50	18.00	15.50	1.25	7/8-9 UNC	17.00	2.50	12.00	9.00	5.50	1.75	
200,000	2.00	14.10	26.00	5.00	19.00	16.00	1.50	1-8 UNC	26.00	5.00	16.00	12.50	5.50	3.50	
kg/millimeters															
22,679.6	31.8	187.7	330.2	44.5	285.8	241.3	34.8	3/4-10 UNC	304.8	44.5	215.9	203.2	114.3	44.5	
45,359.4	38.1	286.8	508.0	63.5	457.2	393.7	31.8	7/8-9 UNC	431.8	63.5	304.8	228.6	139.7	44.5	
90,718.7	50.8	358.1	660.4	127.0	482.6	406.4	38.1	1-8 UNC	660.4	127.0	406.4	317.5	139.7	88.9	

MAGNAMOUNT ORDER INFORMATION

Load Rating	Part #	Suggested List Price
50,000 lb (22,679.6 kg)	21723	\$795.00
100,000 lb (45,359.4 kg)	21724	\$1,095.00
200,000 lb (90,718.7 kg)	17974	\$1,895.00

* Mount only; does not include load cell. See page 250 for Revere Transducer's load cell model CP1, and page 251 for NTEP-certified load cell model CSP1 specifications. See page 141 for Rice Lake Weighing Systems' NTEP-certified load cell model RLCSP1.