

Weigh Modules • Tank and Hopper Kits

ITCM HE - Stainless Steel, Welded Seal NTEP Approved Isolated Tension Cell Modules



Available in configurations with three or four mounting assemblies.

The ITCM Series utilizes several Rice Lake Weighing Systems components to provide an unmatched level of performance in tank and hopper weighing applications and mechanical scale conversions. The ITCM HE incorporates clevis and unique rod end ball joint assemblies to reduce the overall length to less than half of the traditional tension cell mounts, while providing correct load alignment. In addition, the load cell is completely electrically isolated* from stray currents, which are a major cause of load cell failure. To complete the design, a bonding strap connects the two clevis assemblies to further provide safety to your load cells.

Load Cell Certifications:



Module with
RL20001HE S-Beam
load cell. Refer to
page 100 for load
cell specifications.



Complete Kit Includes:

- 3 or 4 ITCM assemblies with RL20001HE Stainless Steel, Welded Seal NTEP-certified S-Beam load cells
- 1 EL604STA NEMA 4X stainless steel signal trim junction box
- 25' of our Hostile Environment EL147HE SURVIVOR® load cell cable

APPLICATIONS:

- Suspended hoppers and tanks
- Mechanical scale conversions
- Use as a single module or in multiples

STANDARD FEATURES:

- Capacities (per module): 500-5,000 lb (226.8-2268.0 kg)
- Clevis mounts with nylon insulating washers
- Teflon®-lined rod end ball joints*
- Load cell is completely isolated from stray currents*
- Bonding strap provides alternative path to ground
- Complete package for ease of installation
- Provides correct load-cell loading even in difficult installations
- Lower overall length compared to other isolated tension assemblies

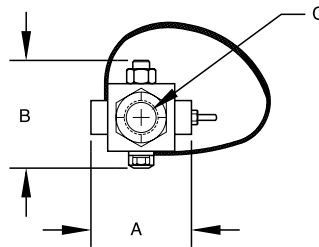
Important: Read "Load Cell Mounting Hardware Safety Guidelines" on page 367.

* Excluding 20,000 lb (9071.9 kg) capacity

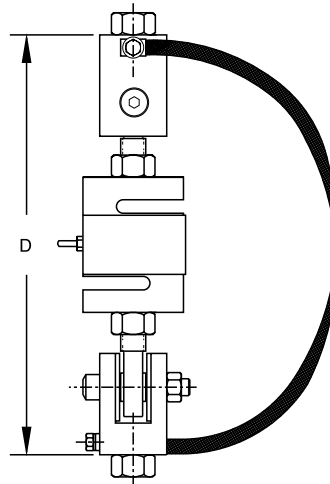
Teflon is a registered trademark of E.I. DuPont

ITCM HE Specifications

**Complete Kit!
Compare
& Save!**



**NEW
LOWER
PRICES**



Weigh Modules

ITCM HE ORDER INFORMATION

* LOAD RATING (LOAD CELL CAPACITY)	DIMENSIONS - INCHES (MILLIMETERS)				Single Module		3-Module Kits		4-Module Kits	
	A	B	C	D	Part #	Suggested List Price	Part #	Suggested List Price	Part #	Suggested List Price
500 lb (226.8 kg)	2.68 (68.1)	2.68 (68.1)	1/2-13 NC	9.50 (ref) (241.3)	46599	\$880.00	46561	\$2,995.00	46580	\$3,775.00
500 lb (226.8 kg)	2.68 (68.1)	2.68 (68.1)	5/8-11 NC	9.50 (ref) (241.3)	46600	\$880.00	46562	\$2,995.00	46581	\$3,775.00
500 lb (226.8 kg)	2.68 (68.1)	2.68 (68.1)	3/4-10 NC	9.50 (ref) (241.3)	46601	\$880.00	46563	\$2,995.00	46582	\$3,775.00
750 lb (340.2 kg)	2.68 (68.1)	2.68 (68.1)	1/2-13 NC	9.50 (ref) (241.3)	46602	\$980.00	46564	\$3,195.00	46583	\$4,185.00
750 lb (340.2 kg)	2.68 (68.1)	2.68 (68.1)	5/8-11 NC	9.50 (ref) (241.3)	46603	\$980.00	46565	\$3,195.00	46584	\$4,185.00
750 lb (340.2 kg)	2.68 (68.1)	2.68 (68.1)	3/4-10 NC	9.50 (ref) (241.3)	46604	\$980.00	46566	\$3,195.00	46585	\$4,185.00
1000 lb (453.6 kg)	2.68 (68.1)	2.68 (68.1)	1/2-13 NC	9.50 (ref) (241.3)	46605	\$980.00	46567	\$3,195.00	46586	\$4,185.00
1000 lb (453.6 kg)	2.68 (68.1)	2.68 (68.1)	5/8-11 NC	9.50 (ref) (241.3)	46606	\$980.00	46568	\$3,195.00	46587	\$4,185.00
1000 lb (453.6 kg)	2.68 (68.1)	2.68 (68.1)	3/4-10 NC	9.50 (ref) (241.3)	46607	\$980.00	46569	\$3,195.00	46588	\$4,185.00
1500 lb (680.4 kg)	2.68 (68.1)	2.68 (68.1)	1/2-13 NC	9.50 (ref) (241.3)	46608	\$980.00	46570	\$3,195.00	46589	\$4,185.00
1500 lb (680.4 kg)	2.68 (68.1)	2.68 (68.1)	5/8-11 NC	9.50 (ref) (241.3)	46609	\$980.00	46571	\$3,195.00	46590	\$4,185.00
1500 lb (680.4 kg)	2.68 (68.1)	2.68 (68.1)	3/4-10 NC	9.50 (ref) (241.3)	46610	\$980.00	46572	\$3,195.00	46591	\$4,185.00
2000 lb (907.2 kg)	2.68 (68.1)	2.68 (68.1)	1/2-13 NC	9.50 (ref) (241.3)	46611	\$980.00	46573	\$3,195.00	46592	\$4,185.00
2000 lb (907.2 kg)	2.68 (68.1)	2.68 (68.1)	5/8-11 NC	9.50 (ref) (241.3)	46612	\$980.00	46574	\$3,195.00	46593	\$4,185.00
2000 lb (907.2 kg)	2.68 (68.1)	2.68 (68.1)	3/4-10 NC	9.50 (ref) (241.3)	46613	\$980.00	46575	\$3,195.00	46594	\$4,185.00
2500 lb (1134.0 kg)	2.68 (68.1)	2.68 (68.1)	5/8-11 NC	9.50 (ref) (241.3)	46614	\$980.00	46576	\$3,195.00	46595	\$4,185.00
2500 lb (1134.0 kg)	2.68 (68.1)	2.68 (68.1)	3/4-10 NC	9.50 (ref) (241.3)	46615	\$980.00	46577	\$3,195.00	46596	\$4,185.00
3000 lb (1360.8 kg)	3.37 (85.6)	3.37 (85.6)	3/4-10 NC	12.25 (ref) (311.2)	46616	\$980.00	46578	\$3,195.00	46597	\$4,185.00
5000 lb (2268.0 kg)	3.37 (85.6)	3.37 (85.6)	3/4-10 NC	12.25 (ref) (311.2)	46617	\$1,420.00	46579	\$4,525.00	46598	\$5,945.00

* Load Rating is per module

USA: 800-472-6703 • Canada/Mexico: 800-321-6703 • International: 715-234-9171

Prices & Specifications subject to change without notice