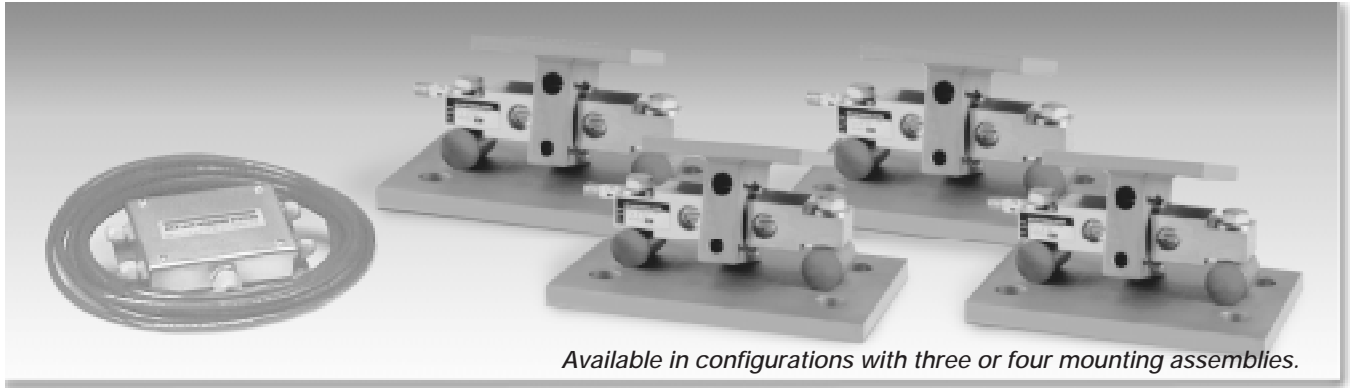


Weigh Modules • Tank and Hopper Kits

EZ Mount 1 HE

Stainless Steel, Hermetically Sealed, Rice Lake Weighing Systems



Available in configurations with three or four mounting assemblies.

The EZ Mount 1 HE Series weigh modules utilize the double-ended beam design with an articulating top plate to provide superior accuracy in any loading condition.

The double-ended beam design means there is less cumbersome hardware and each module has a lower profile than modules of different configurations.

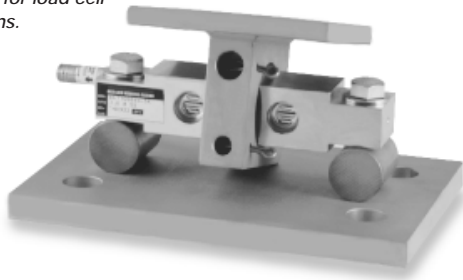
FM-approved RL71000 HE Series load cells give you accuracy and dependability in any environment, including intrinsically-safe and explosion-proof areas.

Their stainless steel, hermetically-sealed design also makes them the ideal solution in harsh environments where moisture is apparent.

Load Cell Certifications:



Module with RL71000 HE double-ended shear beam load cell. Refer to page 133 for load cell specifications.



Complete Kit Includes:

- 1 EL604STA NEMA 4X stainless steel signal trim junction box
- 3 or 4 EZ Mount 1 stainless steel compression mounts
- 3 or 4 RL71000 HE hermetically-sealed stainless steel double-ended shear beam load cells
- 25' of our Hostile Environment EL147HE SURVIVOR® load cell cable

APPLICATIONS:

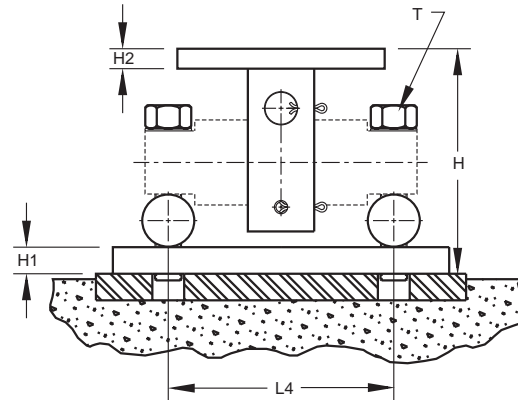
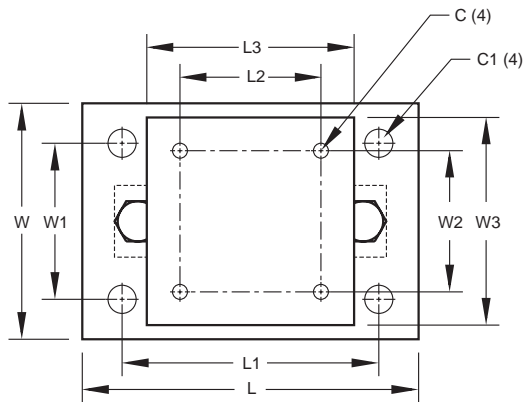
- Medium- to heavy-capacity tank and hopper weighing applications

STANDARD FEATURES:

- Capacities (per module): 5000-60,000 lb (2268-27,216.0 kg)
- Unique sliding pin design compensates for thermal expansion/contraction
- Self-checking
- Easy load cell replacement
- Simplified design allows bolting directly to tank and floor
- Center-loaded double-ended shear beam design
- Low-profile design
- 304 stainless steel construction

Stainless Steel, Hermetically Sealed, EZ Mount 1 HE Specifications

**Complete Kit!
Compare
& Save!**



| RATED CAPACITY | DIMENSIONS | | | | | | | | | | | | | | |
|-----------------------|------------|------|-------|------|------|-------|-------|-------|-------|-------|------------|-------|-------|-------|-------|
| | C | C1 | H | H1 | H2 | L | L1 | L2 | L3 | L4 | T | W | W1 | W2 | W3 |
| lb/inches | | | | | | | | | | | | | | | |
| 5000-20,000 | .56 | 1.06 | 5.31 | .75 | .50 | 11.00 | 8.00 | 3.00 | 6.00 | 6.87 | 5/8-18 UNF | 7.50 | 4.00 | 3.00 | 6.00 |
| 30,000-60,000 | .68 | 1.19 | 8.43 | 1.00 | .75 | 15.00 | 11.50 | 5.12 | 8.00 | 8.50 | 1-14 UNS | 10.00 | 6.00 | 5.12 | 8.00 |
| kg/millimeters | | | | | | | | | | | | | | | |
| 2268.0-9071.9 | 14.2 | 26.9 | 134.9 | 19.1 | 12.7 | 279.4 | 203.2 | 76.2 | 139.7 | 174.5 | 5/8-18 UNF | 190.5 | 101.6 | 76.2 | 139.7 |
| 13,607.8-27,215.5 | 17.3 | 30.2 | 214.1 | 25.4 | 19.1 | 381.0 | 292.1 | 130.0 | 203.2 | 215.9 | 1-14 UNS | 254.0 | 152.4 | 130.1 | 203.2 |

NOTES: • Mounting bolts (T) may project on lower side of base plate • Foundation plate not included

EZ HE MOUNT 1 STAINLESS STEEL ORDER INFORMATION

| Load Rating (per module) | Part # | Suggested List Price |
|-------------------------------|-------------|-------------------------|
| 3-Module Kits | | |
| 5000 lb (2268.0 kg) | 46695 | \$4,370.00 |
| 10,000 lb (4535.9 kg) | 46696 | \$4,370.00 |
| 20,000 lb (9071.9 kg) | 46697 | \$4,370.00 |
| 30,000 lb (13,607.8 kg) | 46698 | \$8,320.00 |
| 40,000 lb (18,143.7 kg) | 46699 | \$8,320.00 |
| 50,000 lb (22,679.6 kg) | 46700 | \$8,385.00 |
| 60,000 lb (27,215.5 kg) | 46701 | \$8,385.00 |
| 4-Module Kits | | |
| 5000 lb (2268.0 kg) | 46702 | \$5,795.00 |
| 10,000 lb (4535.9 kg) | 46703 | \$5,795.00 |
| 20,000 lb (9071.9 kg) | 46704 | \$5,795.00 |
| 30,000 lb (13,607.8 kg) | 46705 | \$11,295.00 |
| 40,000 lb (18,143.7 kg) | 46706 | \$11,295.00 |
| 50,000 lb (22,679.6 kg) | 46707 | \$11,415.00 |
| 60,000 lb (27,215.5 kg) | 46708 | \$11,415.00 |

USA: 800-472-6703 • Canada/Mexico: 800-321-6703 • International: 715-234-9171

Prices & Specifications subject to change without notice