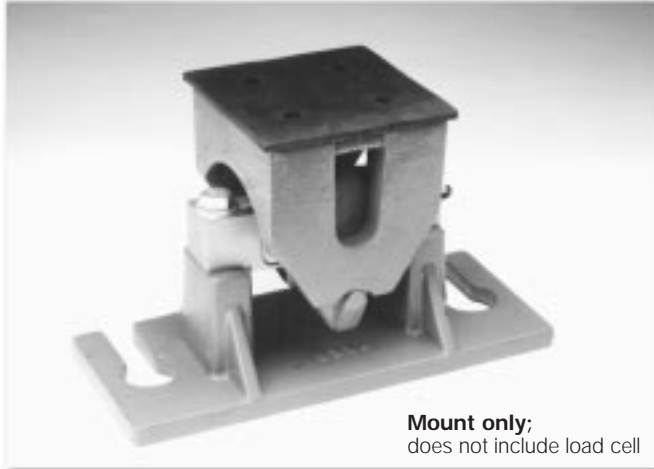


Weigh Modules

TSA Truck Scale Assembly, Sensortronics



The TSA truck scale assembly is designed for use with Rice Lake Weighing Systems RL75058, Sensortronics 65058, or Teda-Huntleigh 4158. The "Unilink" suspension design checks lateral movement of the assembly, while controlled floating of the scale deck is allowed. The effective integration of the TSA mount and the 65058 double-ended shear beam load cell eliminates the need for troublesome check rods, links, expansion assemblies and other peripheral hardware.

APPLICATIONS:

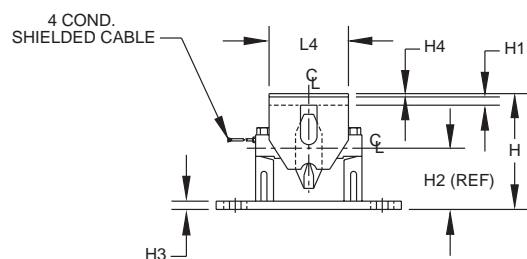
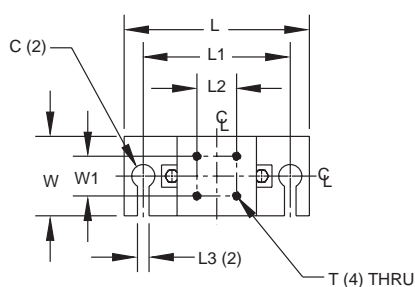
- Truck, track, horizontal tank or general purpose
- From light-duty livestock to heavy-duty vehicle scales

STANDARD FEATURES:

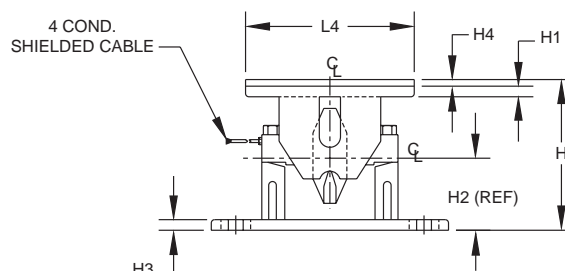
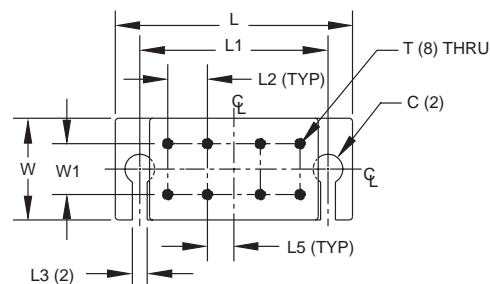
- Capacities: 10,000-75,000 lb (4535.9-34,019.4 kg)
- Constructed of cast steel and iron with primer coating
- Unique high-performance "Unilink" suspension system
- Center-loaded double-ended shear beam design
- Self-checking design
- Rubber pad provided for mounting

OPTIONAL FEATURES:

- NTEP-certified load cells available for 1:10,000d, Class IIIL



10,000 lb-25,000 lb
(4535.9 kg-11,339.8 kg)



50,000 lb-75,000 lb
(22,679.6 kg-34,019.4 kg)

RATED CAPACITY	DIMENSIONS														
	C	H	H1	H2	H3	H4	L	L1	L2	L3	L4	L5	T	W	W1
lb/inches															
10,000-25,000	1.75 DIA.	8.75	.62	4.62	.62	.25	14.00	11.00	3.00	.88	6.00	—	5/8-11 UNC-2B	6.00	3.00
50,000-75,000	2.00 DIA.	11.00	.75	5.44	.75	.50	18.00	14.00	3.00	.88	12.75	2.00	3/4-10 UNC-2B	7.00	3.50
kg/millimeters															
4535.9-11,339.8	44.5 DIA.	222.3	15.7	117.3	15.7	6.4	355.6	279.4	76.2	22.4	152.4	—	5/8-11 UNC-2B	152.4	76.2
22,679.6-34,019.4	50.8 DIA.	279.4	19.1	138.2	19.1	12.7	457.2	355.6	76.2	22.4	323.9	50.8	3/4-10 UNC-2B	177.8	88.9

TSA ORDER INFORMATION

Load Rating	Part #	Suggested List Price
10,000-20,000-25,000lb (4535.9-9071.9-11,339.8kg)	17821	\$625.00
50,000-60,000-75,000lb (22,679.6-27,215.5-34,019.4kg)	17822	\$650.00

* Mount only; does not include load cell. See page 286 for Sensortronics load cell model 65058 specifications. See page 137 for Rice Lake Weighing Systems load cell model RL75058 specifications. See page 311 for Tedeo-Huntleigh load cell model 4158 specifications. See page 138 for HERMETIC RL75060 cell.