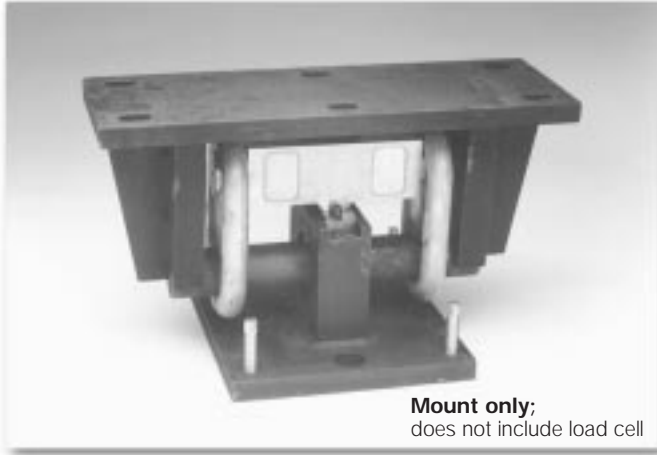


Weigh Modules

TRANSLINK™

Parallel Link Truck Scale Assembly, Rice Lake Weighing Systems



The TRANSLINK parallel link truck scale assembly is designed for use with Rice Lake Weighing Systems' RL75223 and RL75040A, Revere Transducer's 5223 or Sensortronics' 65040A load cells. This design allows the scale platform to move freely in all directions in a horizontal plane while causing the platform to self-center because of the pendulous action of the links.

The unique parallel link design eliminates the need for costly and troublesome checkrods. Simply install platform bumpers and forget about over-travel. This mount is ideal for heavy-capacity weigh bridges.

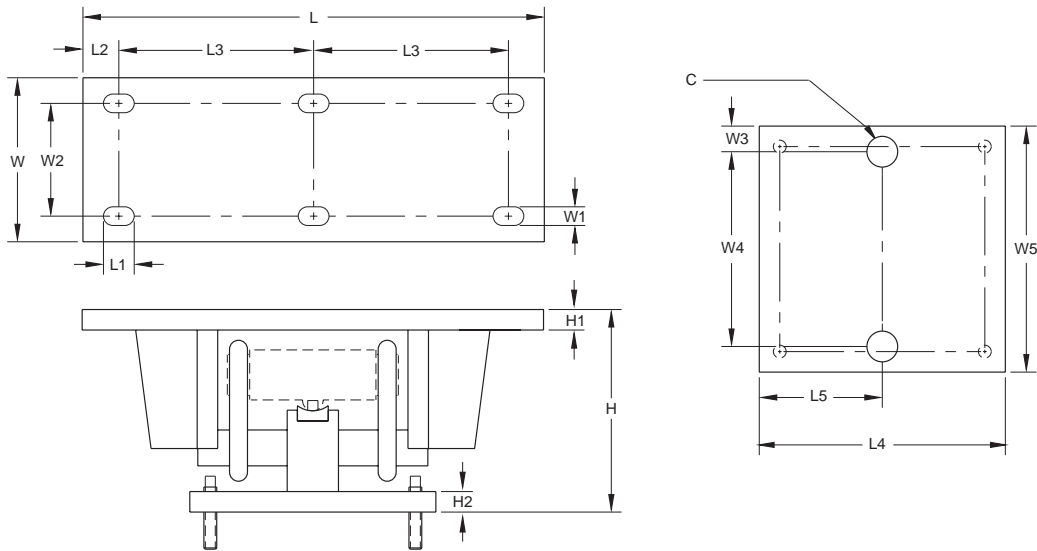
APPLICATIONS:

- Truck scale mount
- Heavy-capacity horizontal tanks

STANDARD FEATURES:

- Capacities: 25,000-100,000lb (11,339.8-45,359.4kg)
- Center-supported, end-loaded double-ended shear beam design
- Free movement in all directions in the horizontal plane with virtually no friction
- Links provide optimal loading conditions for the cell
- Completely self-centering
- Requires no check rods
- Utilizes cells with 3mV/V output
- Models available for RLWS RL75223 and RL75040A, RTI 5223 and Sensortronics 65040A load cells

TRANSLINK™ Specifications



Weigh Modules

RATED CAPACITY	DIMENSIONS															
	C	H	H1	H2	L	L1	L2	L3	L4	L5	W	W1	W2	W3	W4	W5
lb/inches																
50,000-100,000 (RL75223, 5223)	1.50	12.93	1.00	1.00	22.50	1.50	1.75	9.50	11.75	5.88	7.75	.91	5.25	1.25	9.25	11.75
25,000-40,000 (RL75040A, 65040A)	1.50	9.88	1.00	1.00	18.50	1.50	1.75	7.50	11.75	5.88	7.75	.91	5.25	1.25	9.25	11.75
50,000-75,000 (RL75040A, 65040A)	1.50	12.82	1.00	1.00	22.50	1.50	1.75	9.50	11.75	5.88	7.75	.91	5.25	1.25	9.25	11.75
kg/millimeters																
22,679.6-45,359.4	38.1	328.4	25.4	25.4	571.5	37.5	44.5	241.3	298.5	149.4	196.9	23.1	133.4	31.8	235.0	298.4
11,339.8-18,143.7	38.1	251.0	25.4	25.4	469.9	37.5	44.5	190.5	298.5	149.4	196.9	23.1	133.4	31.8	235.0	298.4
22,679.6-34,019.4	38.1	325.6	25.4	25.4	571.5	37.5	44.5	241.3	298.5	149.4	196.9	23.1	133.4	31.8	235.0	298.4

TRANSLINK ORDER INFORMATION

Load Rating	Part #	Suggested List Price
For use with RL75223, 5223 Load Cells:		
50,000-100,000lb (22,679.6-45,359.4kg)	17970	\$675.00
For use with RL75040A, 65040A Load Cells:		
25,000-40,000lb (11,339.8-18,143.7kg)	17971	\$675.00
50,000-75,000lb (22,679.6-34,019.4kg)	17972	\$675.00

* Mount only; does not include load cell. See page 139 for load cell model RL75223 (RLWS), page 140 for load cell model RL75040A (RLWS), page 248 for load cell model 5223 (RTI) and page 289 for model 65040A (Sensortronics) specifications.