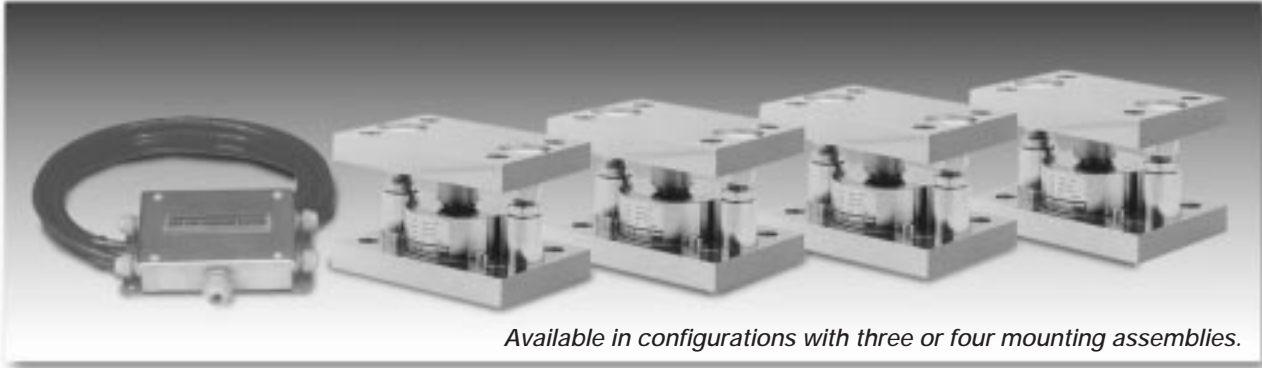


# Weigh Modules • Tank and Hopper Kits

## RLC

### Stainless Steel Weigh Modules, Revere Transducers



Available in configurations with three or four mounting assemblies.

The RLC self-aligning silo mount, together with the RLC load cell family, are an ideal solution for process control, batch weighing, silo/hopper and belt scale applications.

The RLC mount incorporates a removable "rocker pin" design, that uses hardened stainless steel components on all load-bearing surfaces. The fully stainless steel construction guarantees long-term reliability, even in the most harsh environments.

Load Cell Certifications:



Module with hermetically-sealed RLC compression canister load cell. Refer to page 249 for load cell specifications.



### Complete Kit Includes:

- 1 EL604STA NEMA 4X stainless steel signal trim junction box
- 3 or 4 RLC stainless steel compression mounts
- 3 or 4 RLC stainless steel hermetically-sealed compression disk load cells
- 25' of our Hostile Environment EL147HE SURVIVOR® load cell cable

### APPLICATIONS:

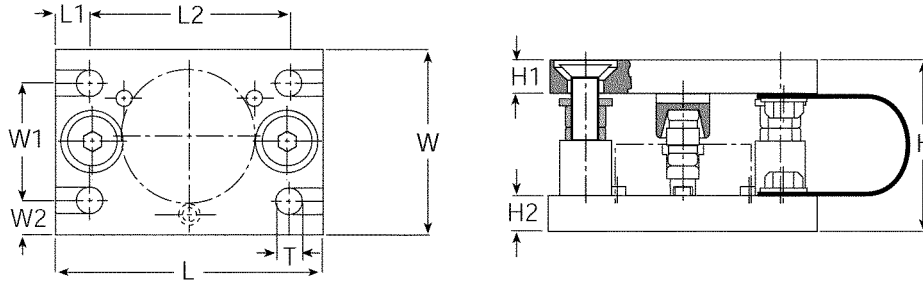
- Medium-capacity tanks, bins and hoppers
- Washdown or corrosive applications
- Process control and batch weighing

### STANDARD FEATURES:

- Capacities (per module): 500-5000 kg (1102.3-11,023.1 lb)
- Matched output load cells eliminate trimming
- 304 stainless steel construction
- Rocker pin design allows movement in all directions
- Hermetically-sealed, IP66/68 stainless steel load cells
- Easy load cell replacement
- Integral jacking/shipping bolts

# RLC Specifications

**Complete Kit!  
Compare  
& Save!**



RATED CAPACITY	DIMENSIONS									
	H	H1	H2	L	L1	L2	T	W	W1	W2
<b>kg/millimeters</b>										
500-1000	80	20	15	150	15	120	14 (Top plate)	100	70	15
2000-5000	105	20	20	160	20	120	13.8 (Bottom plate)	110	70	20
<b>lb/inches</b>										
1102.3-2204.6	3.15	.79	.59	5.91	.59	4.72	.55 (Top plate)	3.94	2.76	.59
4409.2-11,023.1	4.13	.79	.79	6.30	.79	4.72	.54 (Bottom plate)	4.33	2.76	.79

Weigh Modules

## RLC ORDER INFORMATION

Load Rating (Load Cell Capacity)	Part #	Suggested List Price
<b>Single Modules Load Cells Included:</b>		
500 kg (1102.3 lb)	36401	\$985.00
1000 kg (2204.6 lb)	36402	\$985.00
2000 kg (4409.2 lb)	36403	\$985.00
3500 kg (7717.5 lb)	36404	\$1,065.00
5000 kg (11,023.1 lb)	36405	\$1,065.00
<b>3-Module Kits</b>		
500 kg (1102.3 lb)	36406	\$3,205.00
1000 kg (2204.6 lb)	36407	\$3,205.00
2000 kg (4409.2 lb)	36408	\$3,205.00
3500 kg (7717.5 lb)	36409	\$3,445.00
5000 kg (11,023.1 lb)	36410	\$3,445.00
<b>4-Module Kits</b>		
500 kg (1102.3 lb)	36411	\$4,190.00
1000 kg (2204.6 lb)	36412	\$4,190.00
2000 kg (4409.2 lb)	36413	\$4,190.00
3500 kg (7717.5 lb)	36414	\$4,495.00
5000 kg (11,023.1 lb)	36415	\$4,495.00

\* Load Rating is per module