

Weigh Modules • Tank and Hopper Kits

RLBTM Mild Steel/Stainless Steel Weigh Modules



**Does not include load cell.*

The new RLBTM mount was specifically created to take advantage of the improved load introduction accuracy of the ball and cup design. This multi-purpose mount is ideal for both indoor and outdoor applications, and can be used with a variety of single-ended beam load cells. Available in both mild and stainless steel material, this product offers superior accuracy at an affordable price. These assemblies are also quick and easy to install, making the RLBTM the perfect choice for your low-capacity, multi-purpose weighing needs.

APPLICATIONS:

- Light- to medium-capacity tanks and hoppers
- Conveyors

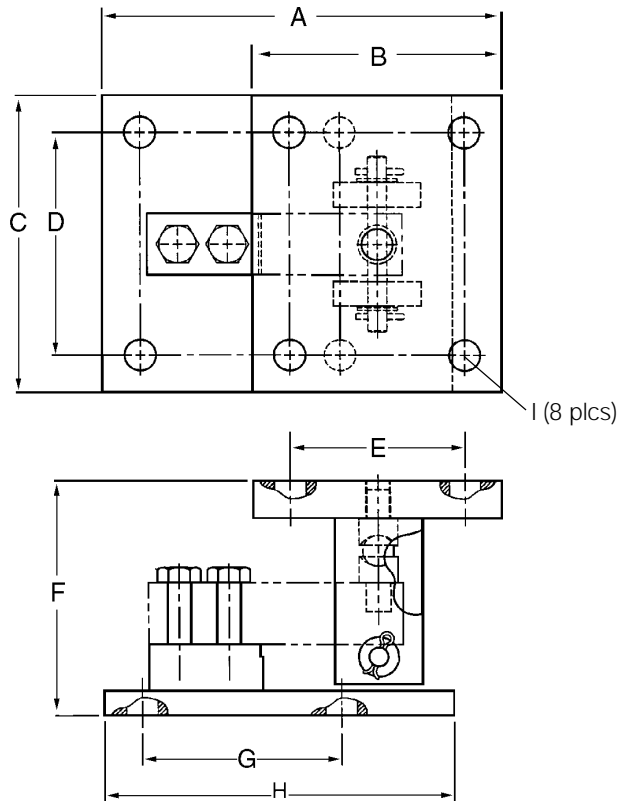
STANDARD FEATURES:

- Capacities (per module): 250 lb - 5,000 lbSE mild steel/1,000 lb-4,000 lb SST
- Zinc Plated mild steel construction or stainless steel
- Ball and cup design
- Self-checking, multi-directional movement
- Load is suspended on ball and cup
- Design incorporates a ball and cup for self centering

RLBTM Specifications

**Complete Kit!
Compare
& Save!**

**NEW
LOWER
PRICES**



Weigh Modules

RATED CAPACITY	DIMENSIONS								
	A	B	C	D	E	F	G	H	I
lb/inches									
250-5000SE	8.00	5.00	6.00	4.50	3.50	4.75	4.00	7.00	.63
kg/millimeters									
113.4/2268.0	203.2	127	152.4	114.3	88.9	120.6	101.6	177.8	16.0

RLBTM MILD STEEL ORDER INFORMATION		
*Load Rating (Load Cell Capacity)	Part #	Suggested List Price
Single Modules (Do NOT include Load Cell)		
250 lb -5,000 lb (113.4-2268.0kg) ...	53059	\$275.00

RLBTM STAINLESS STEEL ORDER INFORMATION		
*Load Rating (Load Cell Capacity)	Part #	Suggested List Price
Single Modules (Do NOT include Load Cell)		
1,000-4,000 lb (453.6-1814.4kg)	53066	\$450.00

* Load Rating is per module