

Weigh Modules • Tank and Hopper Kits

RL2200 Series

Tank, Hopper & Vessel Weighing Assembly, Rice Lake Weighing Systems



Available in configurations with three or four mounting assemblies.

The RL2200 Series mounts are ideal for use in tank, hopper, vessel, and many other applications. The low-profile design allows for economical solutions in a competitive marketplace. This rugged, high-precision mount is designed for easy installation and does not require check rods or other stabilizing hardware. The RL2200 mount has the added feature of self centering, allowing for side loads without sacrificing performance.

Complete Kit Includes:

- 1 EL604STA NEMA 4X stainless steel signal trim junction box
- 3 or 4 RL2200 high-alloy, zinc-plated steel mounting assemblies
- 3 or 4 RL2200 compression disk load cells
- 25' of our Hostile Environment EL147HE SURVIVOR® load cell cable

APPLICATIONS:

- Tank, hopper, or vessel weighing
- Belt or roller conveyors
- Scale platforms and screw feeders

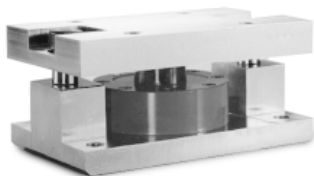
STANDARD FEATURES:

- Capacities: 5000, 10,000, 25,000, 50,000 lb (2268, 4536, 11,340, 22,680 kg)
- Low-profile design
- High 4 mV/V output
- Self-centering in all directions—able to withstand excessive side loads
- Self-checking assembly

OPTIONAL FEATURES:

- Stainless steel construction

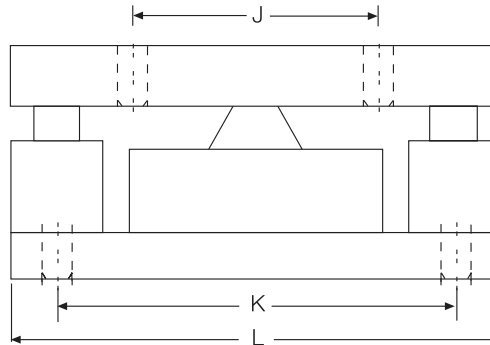
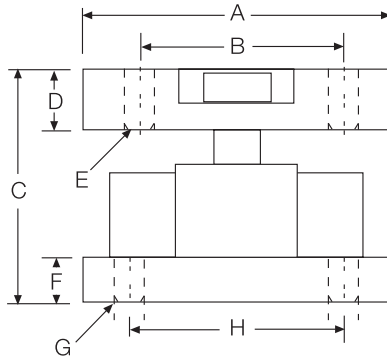
Assembly with integral RL2200 compression disk load cell. See next page for load cell specifications.



RL2200 Series Specifications

**Complete Kit!
Compare
& Save!**

**Low
Profile
Design!**



RATED CAPACITY	DIMENSIONS										
	A	B	C	D	E	F	G	H	J	K	L
lb/inches											
5000-10,000	5.0	3.50	4.00	1.00	.52	1.0	.52	3.50	4.00	6.50	8.0
25,000-50,000	6.0	4.50	4.75	1.25	.78	1.0	.78	4.50	5.00	7.75	10.0
kg/millimeters											
2268-4536	127.0	88.9	101.6	25.4	13.2	19.0	13.2	88.9	101.6	165.1	203.2
11,340-22,679.6	152.4	114.3	120.6	31.7	19.8	25.4	19.8	114.3	127.0	196.8	254.0

LOAD CELL SPECIFICATIONS:

Safe Overload:	150% Full Scale
Full Scale Output:	4.0 mV/V
Rated Excitation:	10 VDC (20 V maximum)
Nonlinearity:	0.05% Full Scale
Hysteresis:	0.03% Full Scale
Temperature:	Compensated range: 15°F to 115°F/-9°C to 46°C
Bridge Resistance:	350 ohms nominal
Insulation Resistance:	5000 megohms
Material/Finish:	High-alloy steel, zinc plated
Seal Type:	Environmentally protected
Cable Length:	30'/9.1m
Cable Color Code:	Red + Excitation Black - Excitation Green + Signal White - Signal
Warranty:	2 years

RL2200 SERIES ORDER INFORMATION

Load Rating	Part #	Suggested List Price
Single Modules		
5000 lb (2268 kg)	45849	\$1,125.00
10,000 lb (4536 kg)	45848	\$1,125.00
25,000 lb (11,340 kg)	45847	\$1,580.00
50,000 lb (22,680 kg)	45846	\$1,580.00
3-Module Kits		
5000 lb (2268 kg)	42811	\$3,575.00
10,000 lb (4536 kg)	42812	\$3,575.00
25,000 lb (11,340 kg)	42813	\$4,940.00
50,000 lb (22,680 kg)	42814	\$4,940.00
4-Module Kits		
5000 lb (2268 kg)	42815	\$4,700.00
10,000 lb (4536 kg)	42816	\$4,700.00
25,000 lb (11,340 kg)	42817	\$6,520.00
50,000 lb (22,680 kg)	42818	\$6,520.00

Weigh Modules