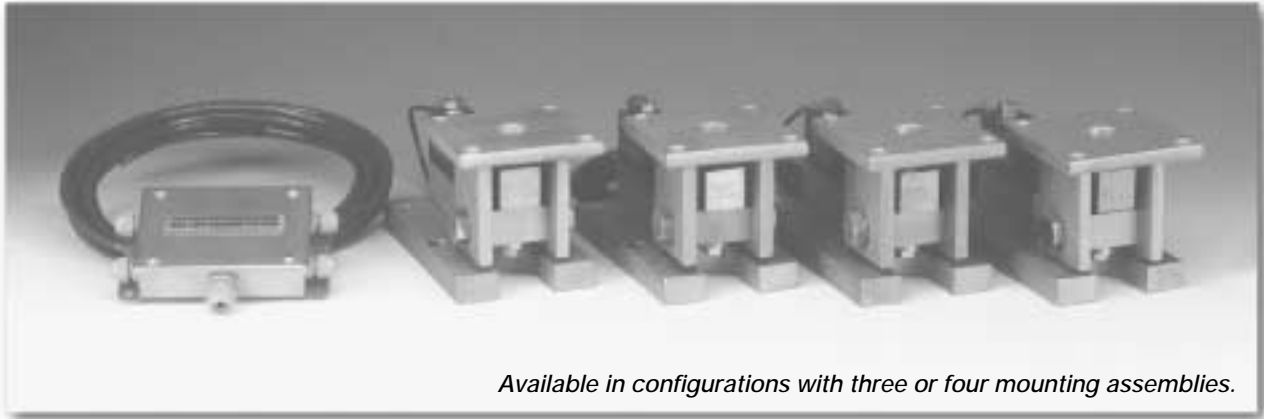


# Weigh Modules • Tank and Hopper Kits

## RL1900 Series Stainless Steel Weigh Modules



Available in configurations with three or four mounting assemblies.

The RL1900 Series Weigh Module Kit utilizes several Rice Lake Weighing Systems components to provide an unmatched level of performance in tank and hopper weighing applications. The RL1900 kit is ideally suited for tank, hopper and bin weighing operations with medium-range capacities. Each module combines multi-directional movement and self-checking capabilities. The welded seal stainless steel RLSSB load cell withstands high pressure washdown and corrosive environments that may present problems to other cells.

Load Cell Certifications:



Module with hermetically sealed RLSSB single-ended beam load cell. Refer to page 116 for load cell specifications.



### Complete Kit Includes:

- 1 EL604STA NEMA 4X stainless steel signal trim junction box
- 3 or 4 RL1900 stainless steel compression mounts
- 3 or 4 RLSSB welded stainless steel single-ended beam load cells
- 25' of our Hostile Environment EL147HE SURVIVOR® load cell cable

### APPLICATIONS:

- Medium-capacity tanks, bins and hoppers
- Washdown or corrosive applications

### STANDARD FEATURES:

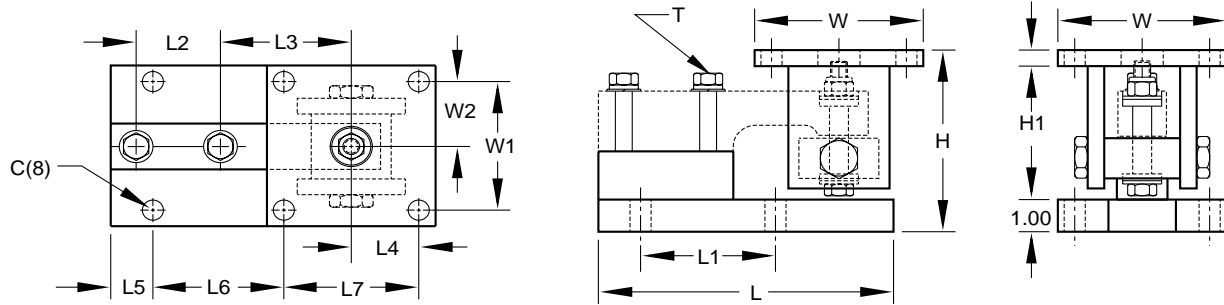
- NTEP-certified load cells, 1:5000d, Class III Single Cell
- Capacities (per module): 1000-10,000 lb (453.6-4535.9 kg)
- 304 stainless steel construction
- Center-pivoted, tension loading design
- Hermetically-sealed stainless steel load cells
- Self-checking, multi-directional movement
- Easy load cell replacement
- Load is suspended on high-strength bolt instead of wire rope
- Design incorporates spherical washers

### OPTIONAL FEATURES:

- Also compatible with HBM SB3 load cells
- Also compatible with RTI SSB load cells

# RL1900 Series Specifications

**Complete Kit!  
Compare  
& Save!**



RATED CAPACITY	DIMENSIONS															
	C	H Min/Max	H1	L	L1	L2	L3	L4	L5	L6	L7	T	W	W1	W2	
<b>lb/inches</b>																
1000-5000	.62	5.38/5.62	.50	8.75	4.00	2.50	3.88	2.00	1.12	4.00	4.00	1/2-13 UNC	5.00	4.00	2.00	
10,000	.81	6.88/7.50	1.00	9.75	5.00	2.63	4.88	2.25	1.00	5.00	4.50	3/4-10 UNC	6.00	4.50	2.25	
<b>kg/millimeters</b>																
453.6-2268.0	15.8	136.7/142.9	12.7	222.3	101.6	63.5	98.6	50.8	28.4	101.6	101.6	1/2-13 UNC	127.0	101.6	50.8	
4535.9	20.6	174.8/190.5	25.4	247.7	127.0	66.8	124.0	57.2	25.4	127.0	114.3	3/4-10 UNC	152.4	114.3	57.2	

Weigh Modules

## RL1900 ORDER INFORMATION

Load Rating (Load Cell Capacity)	Part #	Suggested List Price
<b>Single Modules (Do NOT include Load Cell)</b>		
1000-5000 lb (453.6-2268.0 kg) .....	17841 .....	\$495.00
10,000 lb (4535.9 kg) .....	17843 .....	\$525.00
<b>3-Module Kits</b>		
1000 lb (453.6 kg) .....	18109 .....	\$3,515.00
2000 lb (907.2 kg) .....	18110 .....	\$3,515.00
5000 lb (2268.0 kg) .....	18111 .....	\$3,515.00
10,000 lb (4535.9 kg) .....	18112 .....	\$3,880.00
<b>4-Module Kits</b>		
1000 lb (453.6 kg) .....	18113 .....	\$4,595.00
2000 lb (907.2 kg) .....	18114 .....	\$4,595.00
5000 lb (2268.0 kg) .....	18115 .....	\$4,595.00
10,000 lb (4535.9 kg) .....	18116 .....	\$5,040.00

\* Load Rating is per module