

# Weigh Modules • Tank and Hopper Kits

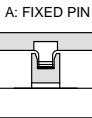
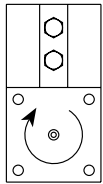
## Paramounts<sup>®</sup> HS (Hermetically Sealed Load Cells) Mild Steel, Light- to Medium-Capacity Tank Weighing Systems



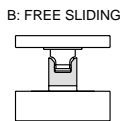
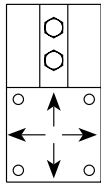
Available in configurations with three or four mounting assemblies.

The Paramounts tank weighing system consists of one fixed-pin mount which allows only the top plate to rotate, one side-stop mount which allows the top plate to slide along the cell only, and one or more free-sliding mount(s) which allow the top plate to slide freely in all directions. This system provides self checking in applications of extreme temperature fluctuations and vibration while maintaining unparalleled system accuracy.

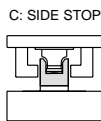
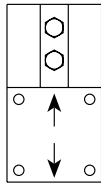
Load Cell Certifications:



Fixed-Pin Mount



Free-Sliding Mount



Side-Stop Mount

Free-Sliding Module with Flintec  
SB4 bending beam load cell.  
Refer to page 199 for load  
cell specifications.



### Complete Kit Includes:

- 1 EL604ETA NEMA 4X stainless steel excitation trim junction box
- 1 fixed-pin module, 1 side-stop module, and 1 or 2 free-sliding assemblies. Each module is complete with a FLINTEC SB4 or SB10 stainless steel hermetically-sealed load cell
- 25' of our Hostile Environment EL147HE SURVIVOR<sup>®</sup> load cell cable

### APPLICATIONS:

- Light- to medium-capacity tanks and hoppers
- High-vibration mixers and blenders
- Process measurement and control

### STANDARD FEATURES:

- Capacities (per module): 225 lb-22,500 lb (1KN/102.1 kg-100KN/10,205.9 kg)
- Unique design allows for thermal expansion/contraction
- Jacking screw allows empty vessel to be lifted clear of load cell for maintenance
- Unique blind load hole eliminates unwanted side and eccentric loads
- Vessel is free to slide laterally on Teflon<sup>®</sup>-coated surfaces
- Load cell outputs are matched to  $\pm 0.07\%$ , allowing replacement without further calibration

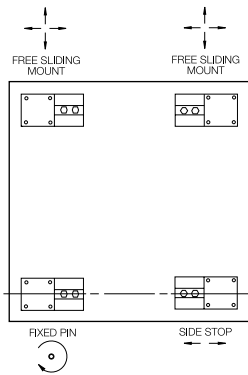
### OPTIONAL FEATURES:

- NTEP-certified load cells available: capacities 1125-11,250 lb

Teflon is a registered trademark of E.I. DuPont

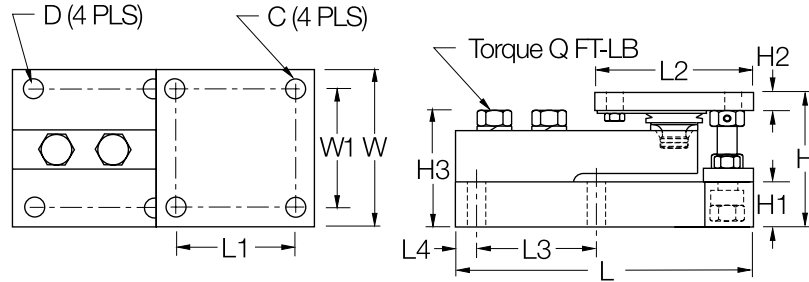
# Paramounts HS Specifications

**Complete Kit!  
Compare  
& Save!**



## VESSEL ARRANGEMENT

When arranged as illustrated, the vessel is fixed at one corner but is able to slide freely as indicated. This ensures that there is minimal side loading on the cells and at the same time the vessel is self-checking. The unique, patented blind load hole technology used in these mounts introduces the load at the neutral axis of the load cell which helps minimize the effects of side loads.



**Prices  
Reduced!**

RATED CAPACITY	DIMENSIONS											Q (FT-LB)				
	C	D	H	H1	*H2	**H2	H3	L	L1	L2	L3		L4	W	W1	
<b>lb/inches</b>																
225 - 520 (1 - 2.3KN)	.375	.437	3.49	1.00	.50	.75	2.98	7.51	3.00	4.00	3.00	.50	4.00	3.00	65	
1125 - 5200 (5 - 23KN)	.437	.437	3.58	1.25	.50	.75	3.06	7.51	3.00	4.00	3.00	.50	4.00	3.00	65	
11,250 (50KN)	.562	.562	4.66	1.50	.62	1.00	4.09	9.19	3.87	5.00	3.87	.56	5.00	3.87	295	
22,500 (100KN)	.688	.688	6.41	2.00	.75	1.25	5.73	11.46	4.75	6.00	4.75	.69	6.00	4.75	515	
<b>kg/millimeters</b>																
102.2 - 236.1	9.5	11.1	88.6	25.4	12.7	19.1	75.7	190.8	76.2	101.6	76.2	12.7	101.6	76.2		
510.8 - 2360	11.1	11.1	90.9	31.8	12.7	19.1	77.7	190.8	76.2	101.6	76.2	12.7	101.6	76.2		
5107.5	14.3	14.3	118.4	38.1	15.7	25.4	103.9	233.4	98.3	127.0	98.3	14.2	127.0	98.3		
10,215.0	17.5	17.5	162.8	50.8	19.1	31.8	145.5	291.1	120.7	152.4	120.7	17.5	152.4	120.7		

KN = Kilonewtons. 1 KN = 224.8089 lb  
\*Side Stop and Free Sliding units.  
\*\*Fixed Pin units.

## PARAMOUNTS HS MILD STEEL ORDER INFORMATION

Load Rating (per module)	Part #	Suggested List Price
<b>NTEP 3-Module Kits</b>		
1125 lb (5KN/510.8 kg)	29871	\$2,895.00
2250 lb (10KN/1021.5 kg)	29872	\$2,895.00
5200 lb (23KN/2360.8 kg)	29873	\$2,895.00
11,250 lb (50KN/5107.5 kg)	29874	\$3,510.00
<b>NTEP 4-Module Kits</b>		
1125 lb (5KN/510.8 kg)	29875	\$3,795.00
2250 lb (10KN/1021.5 kg)	29876	\$3,795.00
5200 lb (23KN/2360.8 kg)	29877	\$3,795.00
11,250 lb (50KN/5107.5 kg)	29878	\$4,595.00
<b>Non-NTEP 3-Module Kits</b>		
225 lb (1KN/102.2 kg)	38201	\$2,695.00
520 lb (2.3KN/236.1 kg)	38205	\$2,695.00
1125 lb (5KN/510.8 kg)	17977	\$2,695.00
2250 lb (10KN/1021.5 kg)	17978	\$2,695.00
5200 lb (23KN/2360.8 kg)	17979	\$2,695.00
11,250 lb (50KN/5107.5 kg)	17980	\$3,145.00
22,500 lb (100KN/10,215.0 kg)	17981	\$3,800.00
<b>Non-NTEP 4-Module Kits</b>		
225 lb (1KN/102.2 kg)	38202	\$3,525.00
520 lb (2.3KN/236.1 kg)	38206	\$3,525.00
1125 lb (5KN/510.8 kg)	17984	\$3,525.00
2250 lb (10KN/1021.5 kg)	17985	\$3,525.00
5200 lb (23KN/2360.8 kg)	17986	\$3,525.00
11,250 lb (50KN/5107.5 kg)	17987	\$4,095.00
22,500 lb (100KN/10,215.0 kg)	17988	\$4,975.00

Conduit Adapter suitable for Flintec SB4 load cell:  
Part Number: 17703  
Sugg. List Price: \$18.00

USA: 800-472-6703 • Canada/Mexico: 800-321-6703 • International: 715-234-9171

Prices & Specifications subject to change without notice

Weigh Modules