

Weigh Modules

RL8000 HE

Stainless Steel, Hermetically Sealed, Rice Lake



This is the miniature version of the RL8500HE and features all of the same benefits. This new innovative mounting assembly incorporates the load cell and mount into the same piece of hardware. The result is an extremely rugged, low-profile assembly that is capable of operating with very high performance levels in the worst of environmental conditions. This assembly is manufactured from stainless steel, and is hermetically sealed to prevent moisture intrusion. Since there is no bulky mounting hardware to deal with, the installation of the product is quick and easy. The capacity range on this version is 250 to 5,000lb (113.4 to 2268.0kg).



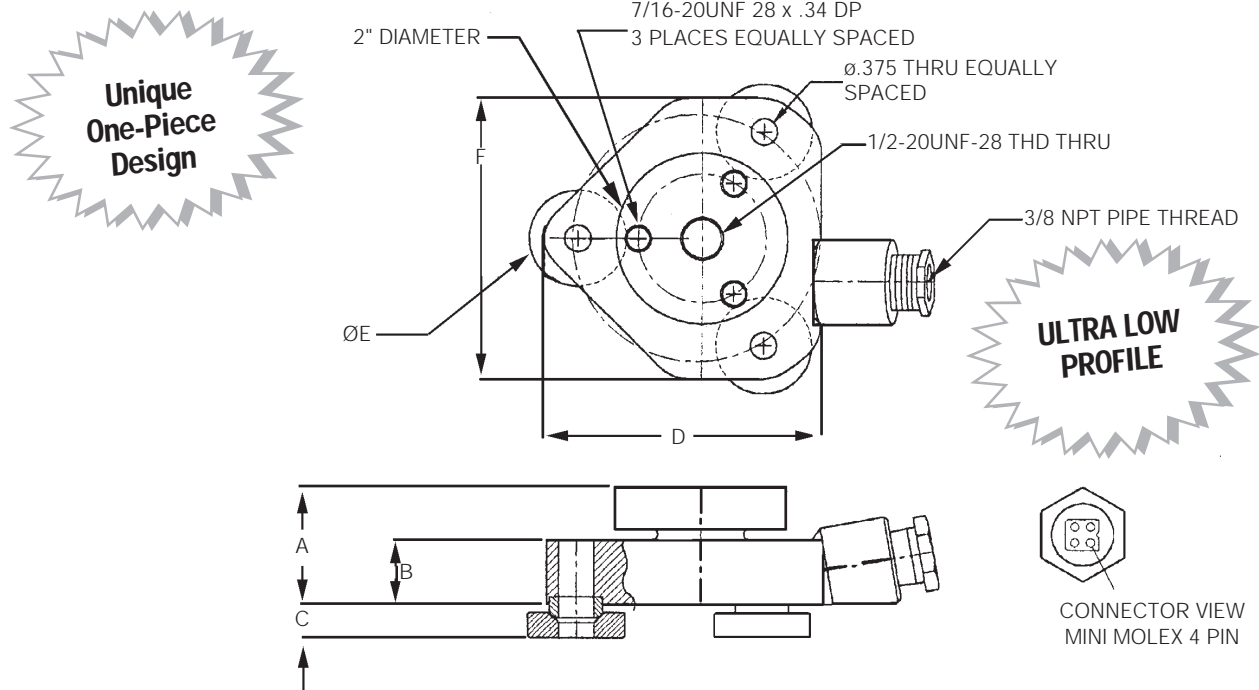
APPLICATIONS:

- Light- to medium-capacity tanks, bins and hoppers
- Chemical blending, batching and mixing

STANDARD FEATURES:

- Capacities from 250-5,000 lb
- Stainless steel
- Hermetically sealed
- Moment corrected
- Low profile
- 300% compression overload protection
- Easy installation
- Field-replaceable, stainless overbraid cable
- IP66/68

RL8000HE Specifications



RATED CAPACITY	DIMENSIONS					
	A	B	C	D	E	F
lb/inches 250-5000	1.38	.75	.40	3.22	1.13	3.28
kg/millimeters 113.4-2268.0	35.1	19.1	10.2	81.8	28.7	83.3

SPECIFICATIONS:

Full Scale Output:	2.0 mV/V
Bridge Resistance:	1000 ohms, nominal with voltage applied
Material/Finish:	Stainless steel
Temperature:	Compensated range 0°F to 150°F/-18°C to 65°C
Safe Overload:	300% Full scale
Safe Sideload:	200% Full scale
Rated Excitation:	10V DC (15V maximum)
Nonlinearity:	0.03% Full scale
Hysteresis:	0.03% Full scale
Insulation Resistance:	1000 megohms
Seal Type:	Hermetically sealed, IP66/68
Cable Length:	25' (7.6m) Stainless steel overbraid
Cable Color Code:	Red + Excitation Black - Excitation Green ... + Signal White - Signal

RL8000HE ORDER INFORMATION

Load Rating	Part #	Suggested List Price
RL8000HE		
250 lb (113.4kg)	53353	\$795.00
500 lb (226.8kg)	53354	\$795.00
1000 lb (453.6kg)	53355	\$795.00
2500 lb (1134.0kg)	53356	\$795.00
5000 lb (2268.0kg)	53357	\$795.00
Replacement Cable	63121	\$125.00